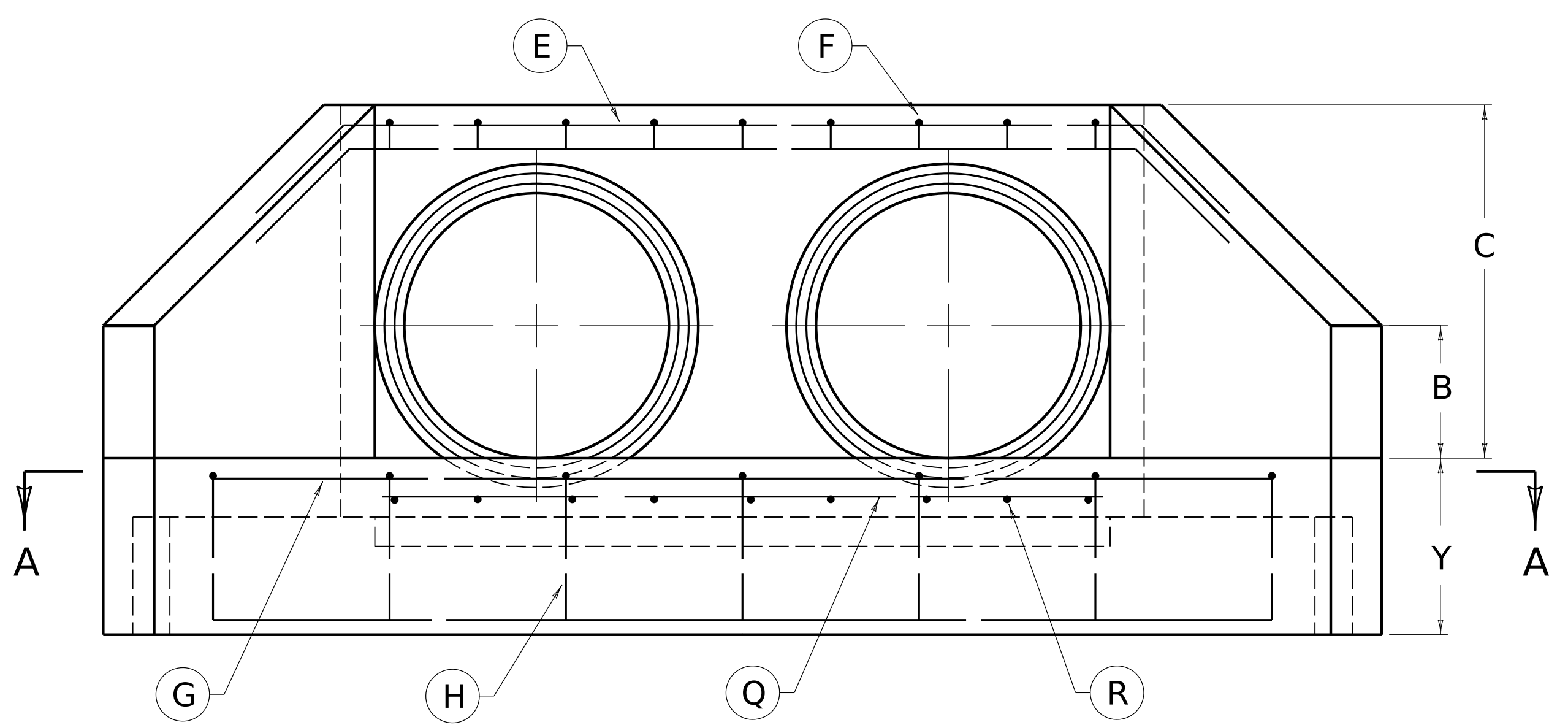
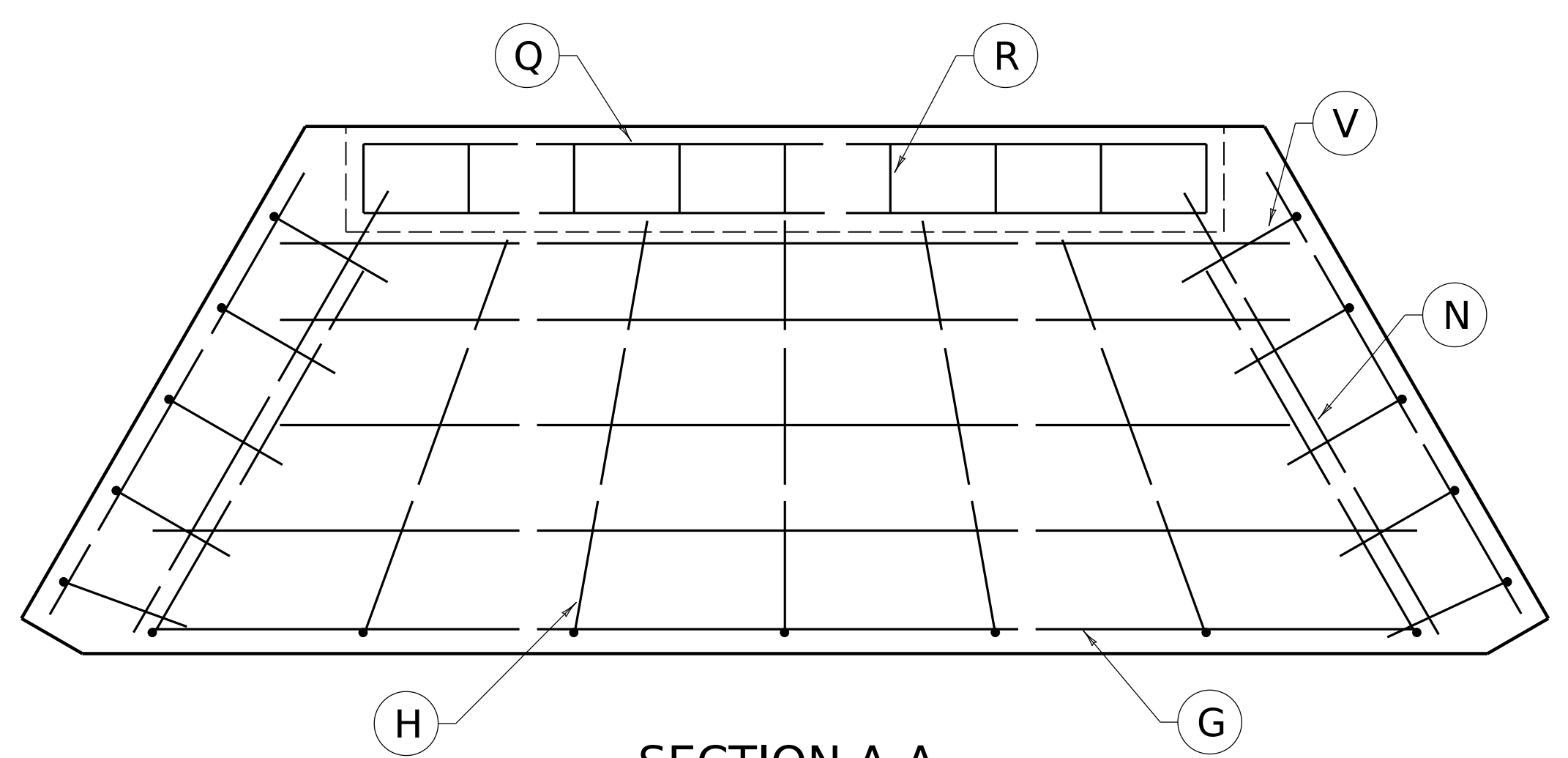


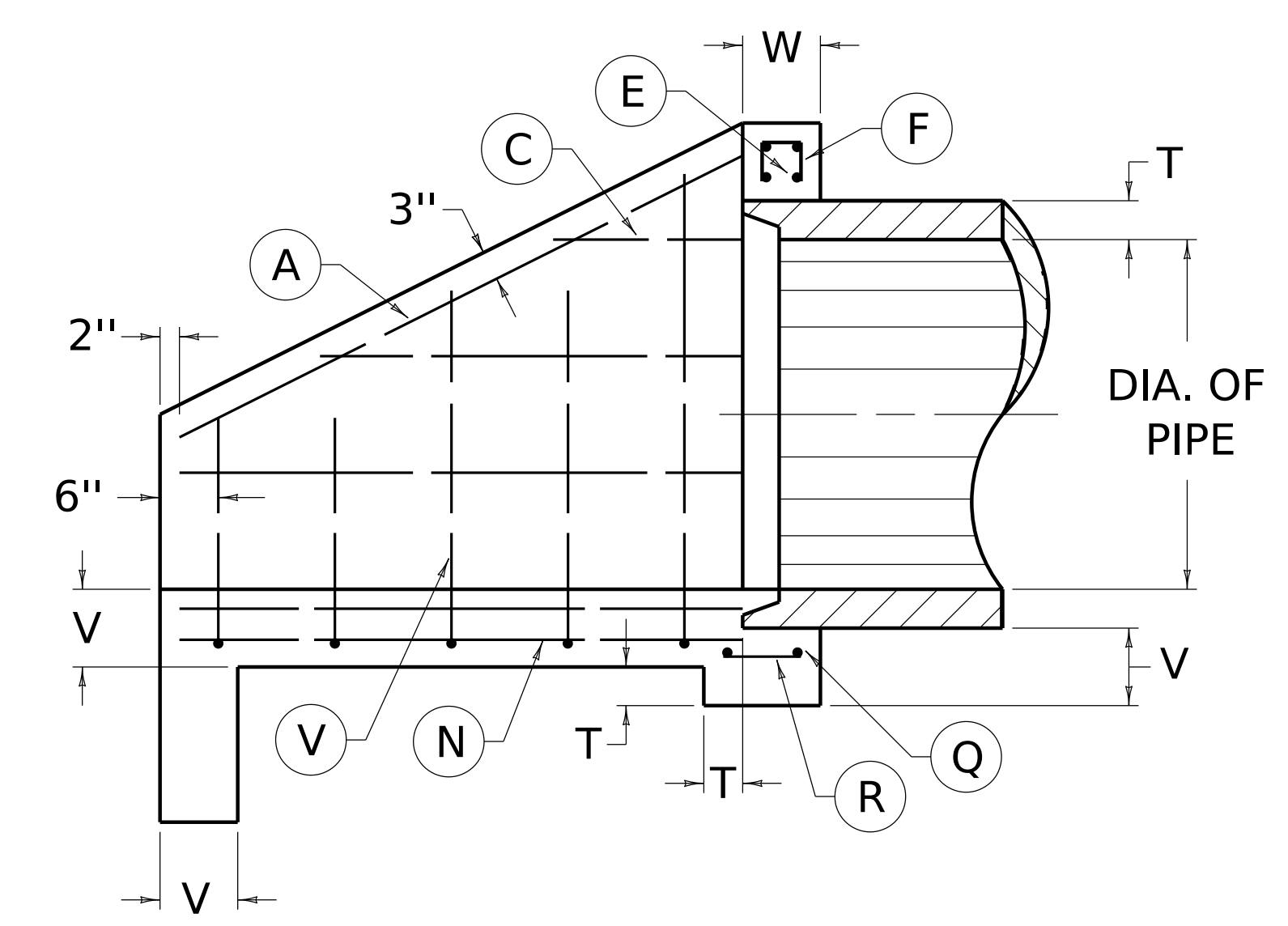
PLAN VIEW



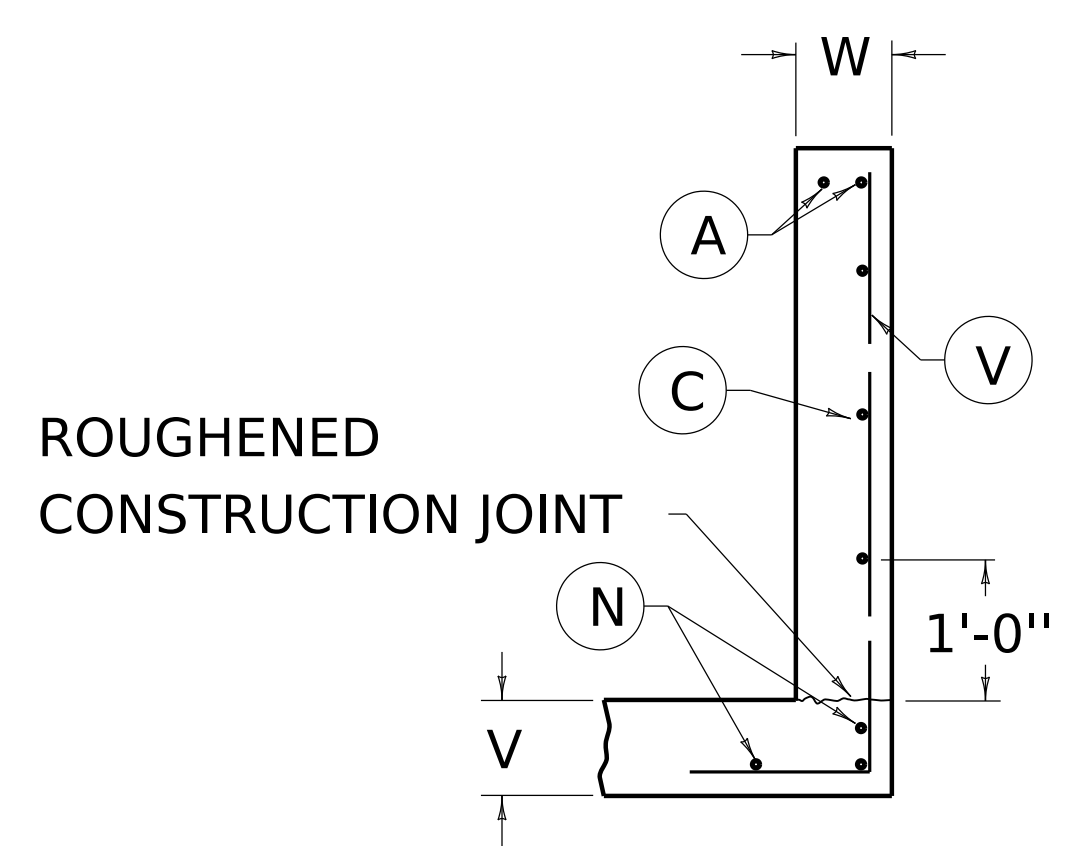
FRONT ELEVATION



SECTION A-A



SECTION B-B



WING SECTION

ROUGHENED
CONSTRUCTION JOINT

~ NOTES ~

1. SEE CURRENT STANDARD DRAWING RDH-522 AND 524 FOR DIMENSIONS, QUANTITIES AND BILL OF REINFORCEMENT.
2. ENCIRCLED LETTERS, ○, INDICATE STEEL BAR LOCATIONS.
3. BARS ○, ○, ○, ARE SPACED 1'-0" O.C. ALL OTHER BARS SHALL BE EVENLY SPACED.
4. BARS ○ ARE PLACED IN ORDER OF INCREASING LENGTHS, BEGINNING AT THE END OF EACH WING.
5. BARS ○ ARE PLACED IN ORDER OF INCREASING LENGTHS, BEGINNING AT THE TOP OF EACH WING.
6. HEADWALLS LOCATED AT EDGE OF SHOULDER SHALL BE PARALLEL TO CENTERLINE OF THE ROAD.
7. APRON BETWEEN WINGS SHALL BE SLOPED IN DIRECTION OF FLOW EQUAL TO SLOPE OF PIPE. FRONT FACE OF HEADWALL AND ENDS OF WINGS SHALL REMAIN VERTICAL.
8. DIMENSIONS FROM FACE OF CONCRETE TO STEEL SHALL BE 2" CLEAR DISTANCE.

KENTUCKY DEPARTMENT OF HIGHWAYS		
<i>DOUBLE PIPE CULVERT HEADWALLS 0° SKEW</i>		
STANDARD DRAWING NO. RDH-510-04		
SUBMITTED _____	DIRECTOR DIVISION OF DESIGN _____	DATE _____
APPROVED _____	STATE HIGHWAY ENGINEER _____	DATE _____