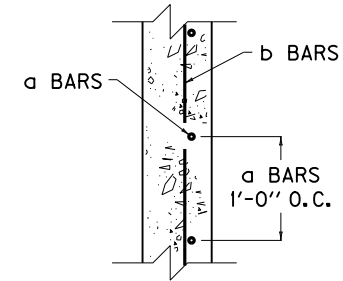
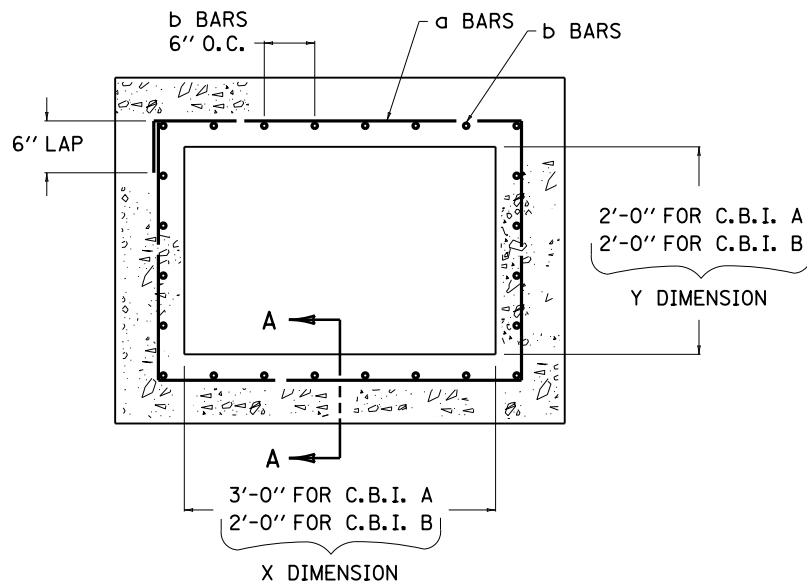


ADDITIONAL STEEL REQUIREMENTS FOR RISER
(WHEN H = 8' TO 15')

NOTES

ALL REINFORCEMENT SHALL BE NO. 5 STEEL BARS.



SECTION A-A
CURB BOX INLET TYPE A
AND
CURB BOX INLET TYPE B

(USE WITH C.B.I. A & C.B.I. B
WHEN H = 8' TO 15')

① APPROXIMATE QUANTITIES PER ONE FOOT IN HEIGHT	
C.B.I. A	C.B.I. B
LBS. STEEL	LBS. STEEL
38	31

① USE WHEN H EXCEEDS 8'-0"

KENTUCKY DEPARTMENT OF HIGHWAYS	
BOX INLET RISER	
STANDARD DRAWING NO. RDB-400-04	
SUBMITTED: <i>John B. Sackett</i> DIRECTOR, DIVISION OF DESIGN	12-1-99 DATE
APPROVED: <i>J. M. Howell</i> STATE HIGHWAY ENGINEER	12-1-99 DATE