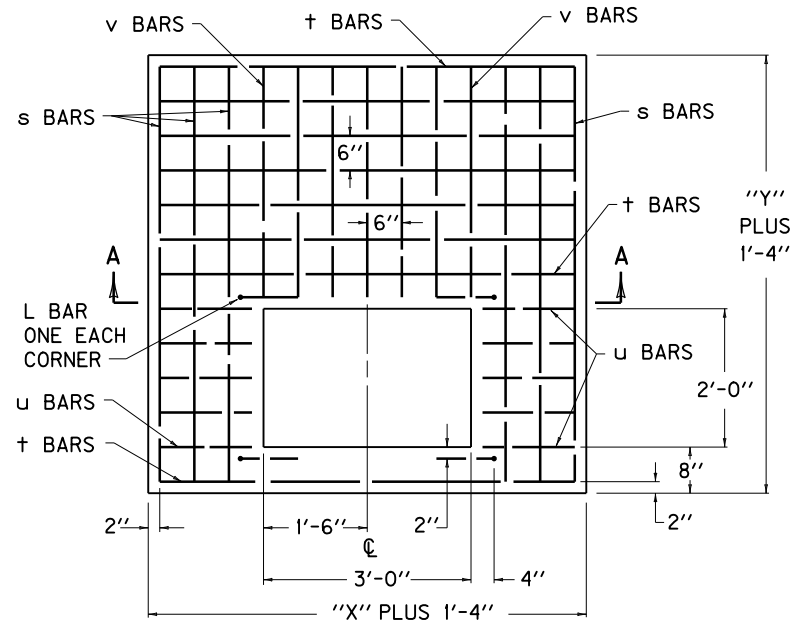


## REINFORCEMENT STEEL FOR 8" LID

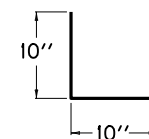
SIZE		NO. 5 STEEL BARS									LBS.
		BAR s		BAR †		BAR u		BAR v			
X	Y	QTY.	LIN. FT.	QTY.	LIN. FT.	QTY.	LIN. FT.	QTY.	LIN. FT.		
3'-0"	2'-0"	-	-	-	-	-	-	-	-	7	
	2'-6"	4	3'-6"	6	4'-0"	-	-	14	0'-10"	59	
	3'-0"		4'-0"	8					1'-4"	77	
	3'-6"		4'-6"	10					1'-10"	94	
	4'-0"		5'-0"	12					2'-4"	112	
	4'-6"		5'-6"	14					2'-10"	130	
	5'-0"		6'-0"	16					3'-4"	147	
3'-6"	2'-0"		4	3'-0"					4	4'-6"	-
	2'-6"	3'-6"		6	0'-10"	62					
	3'-0"	4'-0"		8	1'-4"	81					
	3'-6"	4'-6"		10	1'-10"	100					
	4'-0"	5'-0"		12	2'-4"	118					
	4'-6"	5'-6"		14	2'-10"	137					
	5'-0"	6'-0"		16	3'-4"	156					
4'-0"	2'-0"	8	3'-0"	4	5'-0"	20	0'-10"	14	-	70	
	2'-6"		3'-6"	6					0'-10"	97	
	3'-0"		4'-0"	8					1'-4"	119	
	3'-6"		4'-6"	10					1'-10"	141	
	4'-0"		5'-0"	12					2'-4"	163	
	4'-6"		5'-6"	14					2'-10"	185	
	5'-0"		6'-0"	16					3'-4"	207	
4'-6"	2'-0"	8	3'-0"	4	5'-6"	20	1'-1"	14	-	78	
	2'-6"		3'-6"	6					0'-10"	105	
	3'-0"		4'-0"	8					1'-4"	128	
	3'-6"		4'-6"	10					1'-10"	151	
	4'-0"		5'-0"	12					2'-4"	174	
	4'-6"		5'-6"	14					2'-10"	197	
	5'-0"		6'-0"	16					3'-4"	220	
5'-0"	2'-0"	12	3'-0"	4	6'-0"	20	1'-4"	14	-	97	
	2'-6"		3'-6"	6					0'-10"	127	
	3'-0"		4'-0"	8					1'-4"	154	
	3'-6"		4'-6"	10					1'-10"	180	
	4'-0"		5'-0"	12					2'-4"	207	
	4'-6"		5'-6"	14					2'-10"	233	
	5'-0"		6'-0"	16					3'-4"	259	

### ~NOTES~

1. IN ADDITION TO THE CHARTED STEEL, FOUR L BARS ARE REQUIRED IN THE LID AND ARE INCLUDED IN THE TOTALS.
2. CONCRETE QUANTITIES FOR LID ARE INCLUDED ON "DIMENSIONS AND ESTIMATE OF QUANTITIES (PIPE CHAMBER)", SEE CUR. STD. DWG. [RDB-410](#).
3. REINFORCEMENT SHALL HAVE A CLEAR DISTANCE OF 2" FROM THE OUTSIDE FACE UNLESS OTHERWISE SHOWN.



SECTION A-A



L BAR DETAIL

USE WITH CUR. STD. DWGS.  
[RDB-271](#), [RDB-272](#), [RDB-400](#),  
[RDB-410](#), [RDB-420](#), [RDB-270](#).

<b>KENTUCKY</b>	
<b>DEPARTMENT OF HIGHWAYS</b>	
<b>CURB BOX INLET</b>	
<b>TYPE A</b>	
(DETAIL & BAR CHART FOR 8" LID)	
STANDARD DRAWING NO. RDB-273-05	
SUBMITTED BY <i>John B. Sackett</i>	12-1-99
DIRECTOR, DIVISION OF DESIGN	DATE
APPROVED BY <i>J. M. Howell</i>	12-1-99
STATE HIGHWAY ENGINEER	DATE