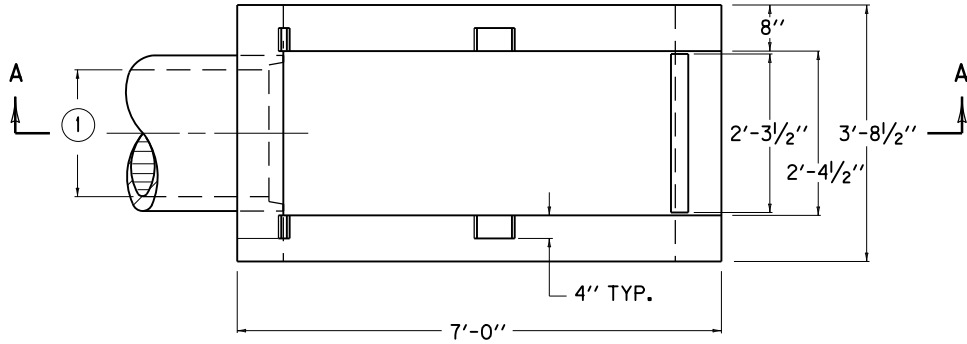
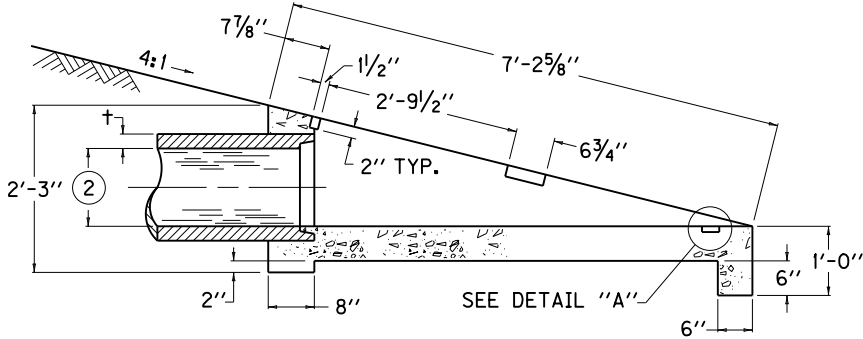


**NOTES**

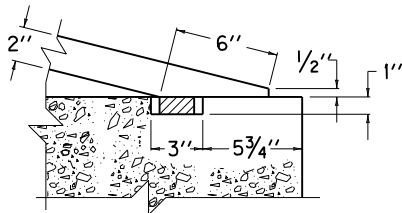
- ① INTERIOR SPAN
- ② INTERIOR RISE
- 3. THE UNIT PRICE BID FOR EACH STRUCTURE SHALL INCLUDE CONCRETE, STRUCTURAL STEEL GRATINGS, EXCAVATION, LABOR AND ALL INCIDENTALS NECESSARY FOR ITS CONSTRUCTION AS DETAILED ON THIS SHEET.
- 4. SIZE AND LOCATION OF PIPE SHALL BE SHOWN ON PLANS.
- 5. SLOPED BOX INLET OR OUTLET TYPE 1 IS INTENDED TO BE USED WITH THE FOLLOWING PIPE SIZES:  
 METAL PIPE ARCH - (15" EQUIV. ROUND )  
 METAL PIPE ARCH - (18" EQUIV. ROUND )  
 CONCRETE ELLIPTICAL PIPE - (18" EQUIV. ROUND )



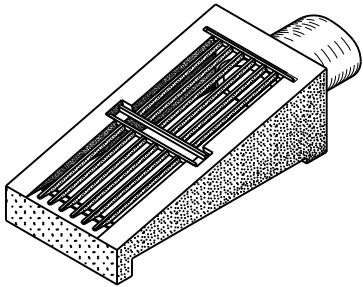
**PLAN VIEW**



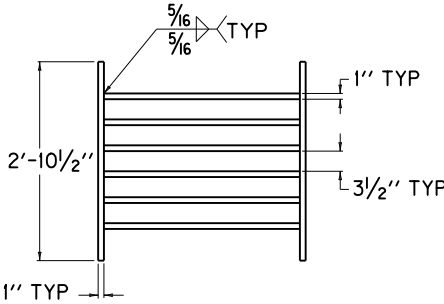
**SECTION A-A**



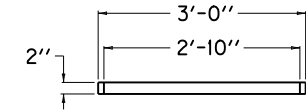
**DETAIL "A"**



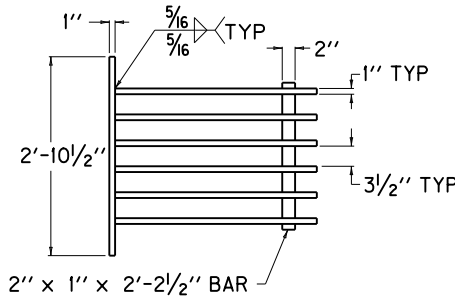
**ISOMETRIC VIEW**



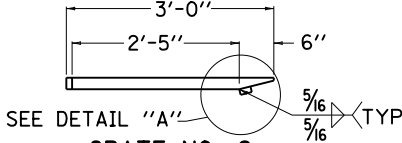
**GRATE NO. 1  
PLAN VIEW**



**GRATE NO. 1  
SIDE ELEVATION**



**GRATE NO. 2  
PLAN VIEW**



**GRATE NO. 2  
SIDE ELEVATION**

APPROXIMATE QUANTITIES			
CLASS "A" CONC. CUBIC YDS.	GRATE NUMBER	LBS STRUCTURAL STEEL	
		EACH GRATE	TOTAL LBS
0.9	1	155	298
	2	143	

**KENTUCKY  
DEPARTMENT OF HIGHWAYS**

**SLOPED BOX  
INLET OR OUTLET  
TYPE 1**

STANDARD DRAWING NO. RDB-110-07

SUBMITTED BY: *John B. Sackett* DIRECTOR, DIVISION OF DESIGN      12-1-99 DATE

APPROVED: *J. M. [Signature]* STATE HIGHWAY ENGINEER      12-1-99 DATE