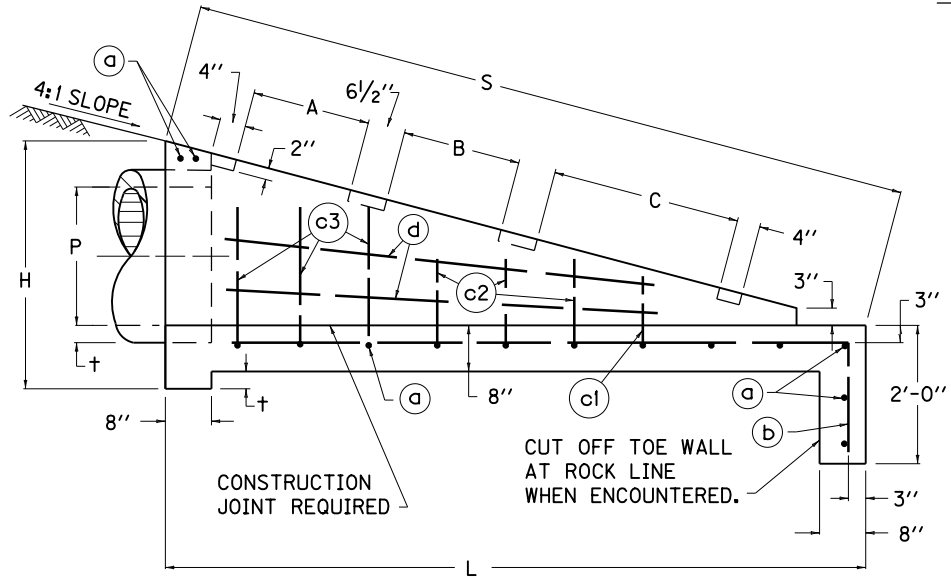


PLAN VIEW



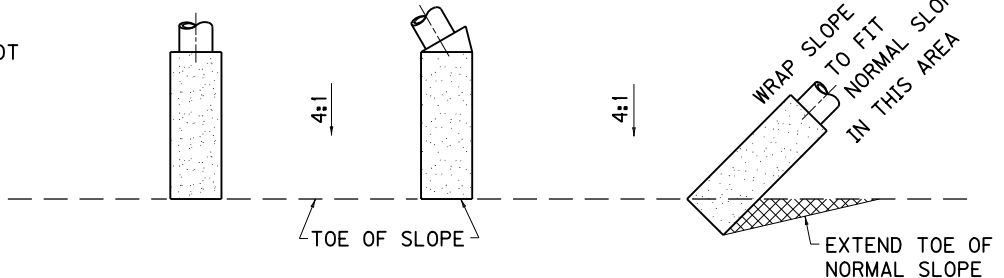
ELEVATION VIEW

DIMENSIONS									NO. OF GRATES REQ'D.	
P	H	L	S	R	E	A	B	C	2'	3'
15"	3'-0"	8'-2"	8'-5 1/2"	3'-3"	1'-11"	1'-8 1/2"	2'-8 3/4"	-----	1	1
18"								2'-8 3/4"		
24"	3'-7"	10'-1 1/2"	10'-5 5/8"	3'-10"	2'-6"	1'-8 1/2"	2'-8 3/4"	2'-8 3/4"	2	1

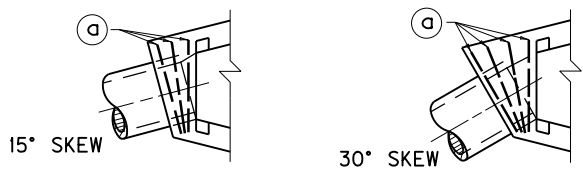
NOTES

1. THE BID ITEM SHALL BE: "(*) SLOPED BOX OUTLET TYPE 1"
* SIZE OF PIPE
2. THE MINIMUM REQUIREMENT FOR REINFORCING STEEL SHALL BE GRADE 40. FIELD BENDING WILL BE PERMITTED.
3. ONE ADDITIONAL (c) BAR WILL BE REQUIRED FOR EACH 15° SKEW.
4. "+" IS THE CONCRETE PIPE WALL THICKNESS OR METAL PIPE CORRUGATION DEPTH.
5. SEE CURRENT STD. DWG. RDB-101 FOR REINFORCING STEEL AND GRATE DETAILS.

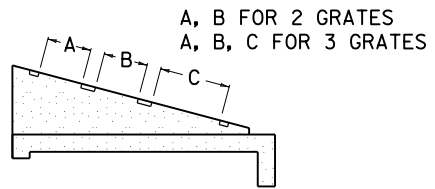
CONDITION NO. 1 0° SKEW CONDITION NO. 2 1° TO 30° SKEW CONDITION NO. 3 GREATER THAN 30° SKEW



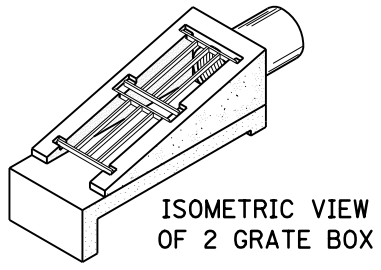
PLAN VIEW OF STRUCTURE LOCATIONS



3 (a) BAR DETAIL FOR 15° AND 30° SKEW



DETAIL SHOWING LOCATION OF SLOTS FOR GRATES



ISOMETRIC VIEW OF 2 GRATE BOX

USE WITH CUR. STD. DWG. RDB-101

KENTUCKY
DEPARTMENT OF HIGHWAYS

SLOPED BOX
OUTLET TYPE 1

STANDARD DRAWING NO. RDB-100-04

SUBMITTED: *John B. Sackett* DIRECTOR, DIVISION OF DESIGN 12-1-99 DATE

APPROVED: *J. M. [Signature]* STATE HIGHWAY ENGINEER 12-1-99 DATE