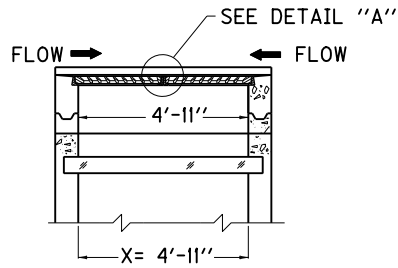


GRADE CONDITION

(1 GRATE & 1 FRAME REQ'D.)



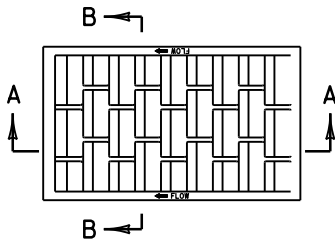
SAG CONDITION

(2 GRATES & 2 FRAMES REQ'D.)

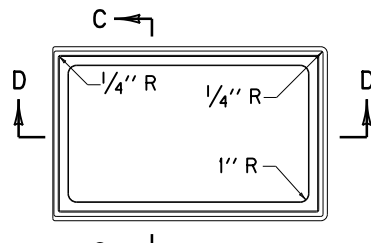
NOTES

1. ALL FILLETS AND ROUNDS SHALL BE $\frac{1}{8}$ " R.
2. THE FRAME AND GRATE SHALL BE MANUFACTURED OF CAST GRAY IRON CONFORMING TO ASTM A-48 CLASS 35B.

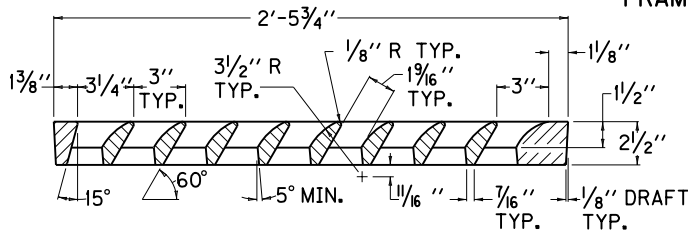
APPROX. WEIGHT	
1 GRATE	160 LBS.
1 FRAME	70 LBS.



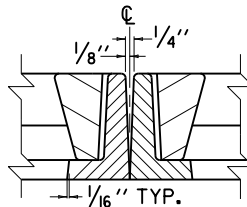
GRATE PLAN VIEW



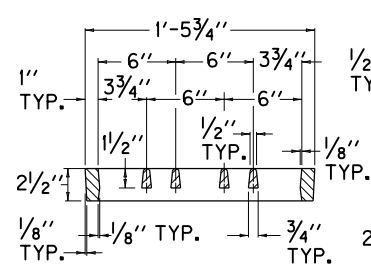
FRAME PLAN VIEW



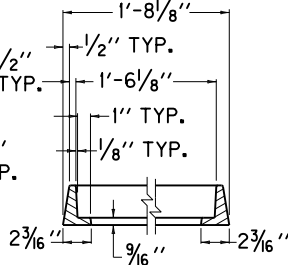
SECTION A-A



DETAIL "A"

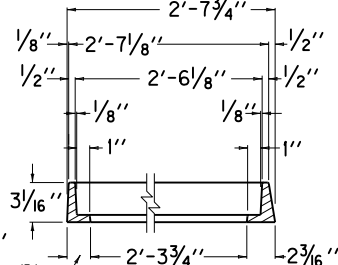


SECTION B-B



SECTION C-C

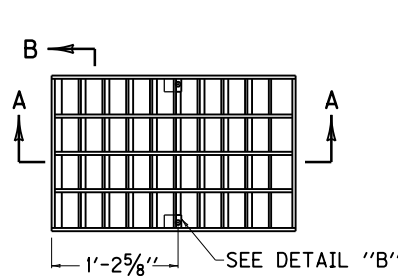
GRAY IRON CASTING



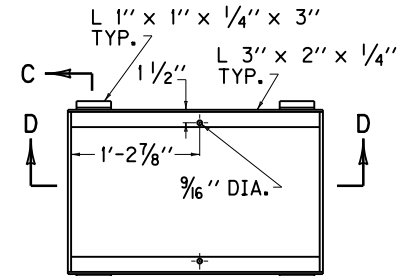
SECTION D-D

NOTES

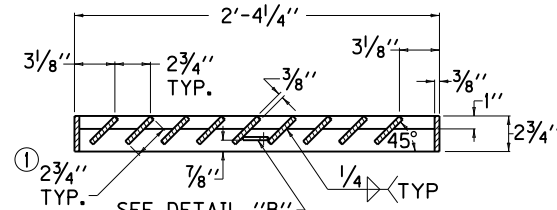
- ① THE $2\frac{3}{4}$ " BAR SHALL BE NOTCHED TO RECEIVE THE 1" BAR.
- ② THE FRAME AND GRATE SHALL BE ASSEMBLED WITH 2 (TWO) $\frac{1}{2}$ " X $2\frac{1}{4}$ " STAINLESS HEX HEAD BOLTS AND NUTS (COMMERCIAL QUALITY).
- ③ ALL STRUCTURAL STEEL SHALL CONFORM TO ASTM A-36.



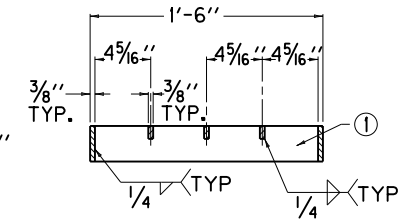
GRATE PLAN VIEW



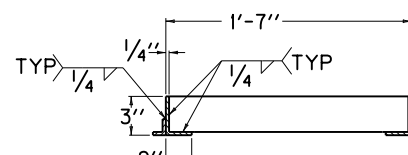
FRAME PLAN VIEW



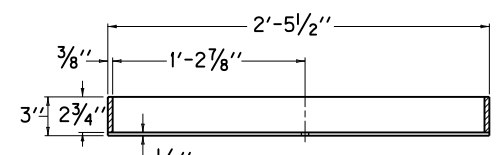
SECTION A-A



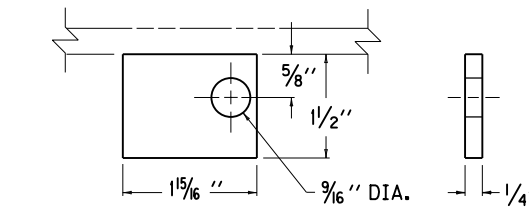
SECTION B-B



SECTION C-C



SECTION D-D



DETAIL "B"

③ STR. STEEL WTS.		
1 GRATE	TOTAL	1 FRAME
82 LBS.	126 LBS.	44 LBS.

STRUCTURAL STEEL

USE WITH CUR. STD. DWGS.
RDB-013, 015, 016, 017, 018,
AND RDB-019 OR RDB-030, 031,
032, 033, 034 AND RDB-035

KENTUCKY	
DEPARTMENT OF HIGHWAYS	
DROP BOX INLET	
TYPE 13 AND TYPE 16	
(FRAME AND GRATE DETAILS)	
STANDARD DRAWING NO. RDB-014-05	
SUBMITTED: <i>John B. Sackett</i>	12-1-99
DIRECTOR, DIVISION OF DESIGN	DATE
APPROVED: <i>J. M. Howell</i>	12-1-99
STATE HIGHWAY ENGINEER	DATE