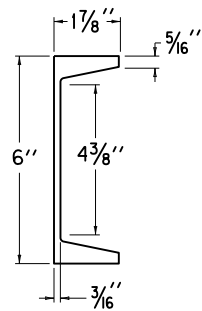


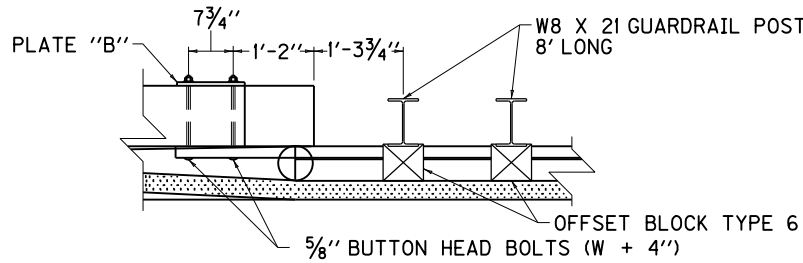
ELEVATION VIEW

PLAN VIEW

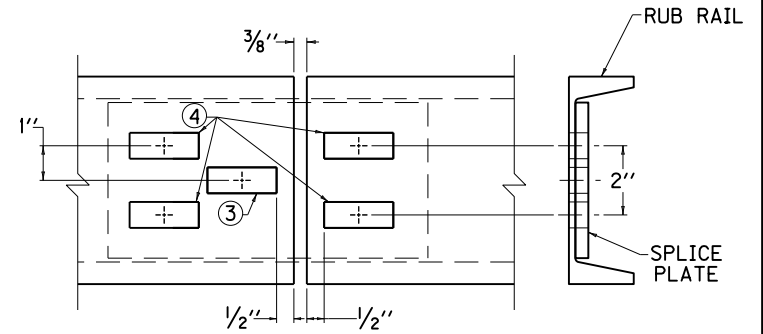
C6 X 8.2 RUB RAIL



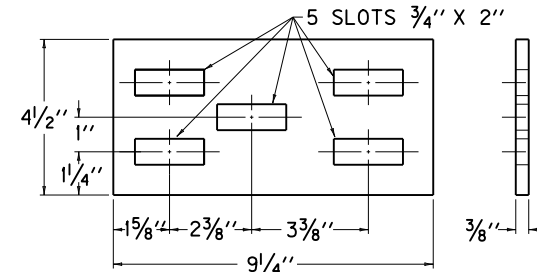
SECTION A-A



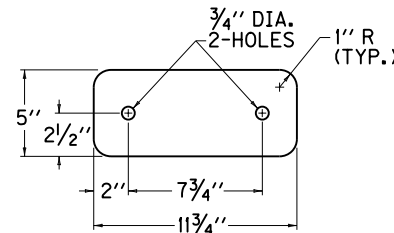
RUB RAIL ATTACHED TO CONCRETE PARAPET



RUB RAIL SPLICE (TYP.)



RUB RAIL SPLICE PLATE



5/8" STEEL PLATE "B"

~ NOTES ~

1. RUB RAIL IS DETAILED AS ONE CONTINUOUS PIECE, A SPLICE IS PERMITTED PROVIDING IT IS DONE AT A GUARDRAIL POST. SEE "RUB RAIL SPLICE" DETAIL.
2. MATERIAL REQUIREMENTS  
 ALL HARDWARE SHALL BE GALVANIZED. (AASHTO M-232)  
 5/8" STEEL PLATE "B" (AASHTO M-270)  
 3/8" STEEL PLATE "RUB RAIL SPLICE PLATE" (AASHTO M-270)  
 5/8" BUTTON HEAD BOLTS (AASHTO M-180)  
 5/8" HEAVY HEX NUTS (5/8" THICK) (AASHTO M-291)  
 5/8" FLAT WASHERS (1/8" THICK) (AASHTO M-293)  
 C6 X 8.2 RUB RAIL (AASHTO M160 AND M270)  
 GRADE 36, GALVANIZED ACCORDING TO AASHTO M111 AFTER PUNCHING AND CUTTING ARE COMPLETE.
- ③ THIS SLOT FOR BOLTING RAIL AND SPLICE PLATE TO GUARDRAIL POST WITH A 5/8" X 3 1/2" BUTTON HEAD BOLT AND HEX HEAD NUT.
- ④ THESE SLOTS FOR BOLTING RAIL TO SPLICE PLATE WITH A 5/8" X 1 1/2" BUTTON HEAD BOLT AND HEX HEAD NUT.

SHEET 2 OF 3

KENTUCKY  
 DEPARTMENT OF HIGHWAYS  
 GUARDRAIL CONNECTOR  
 TO BRIDGE END  
 TYPE A COMPONENTS

STANDARD DRAWING NO. RBC-002-02  
 SUBMITTED: [Signature] DATE 12-2-11  
 APPROVED: [Signature] STATE HIGHWAY ENGINEER DATE 12-2-11