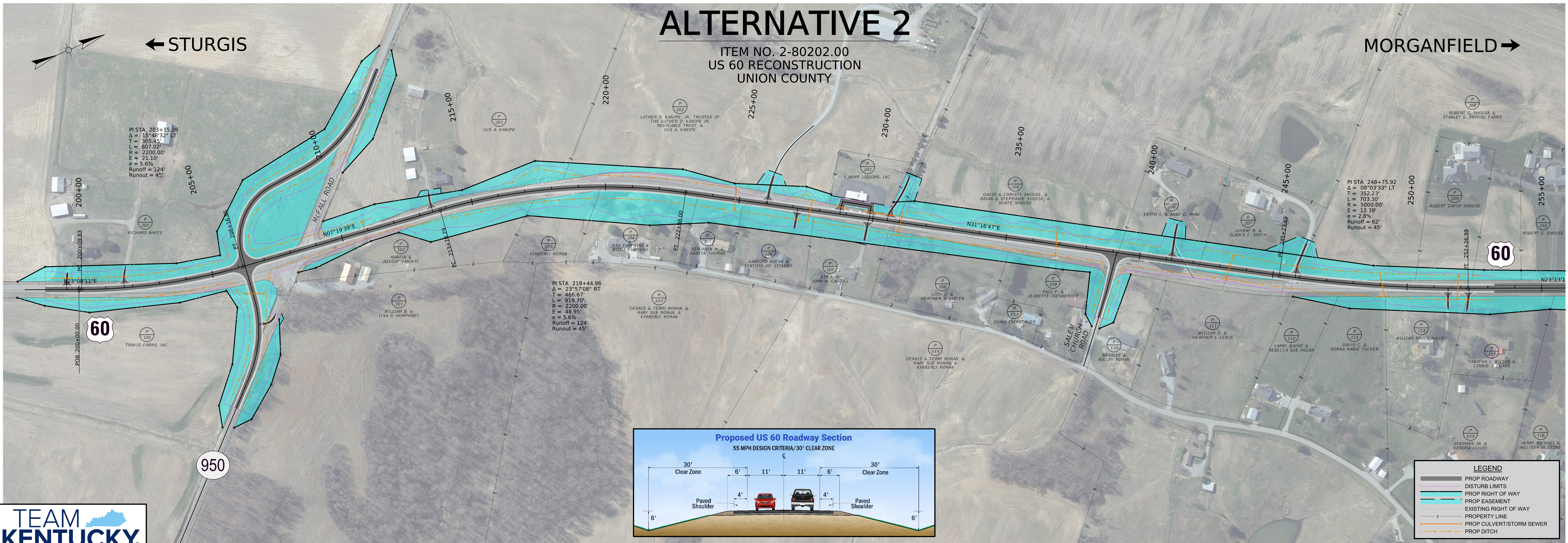


ALTERNATIVE 2

ITEM NO. 2-80202.00
US 60 RECONSTRUCTION
UNION COUNTY

← STURGIS

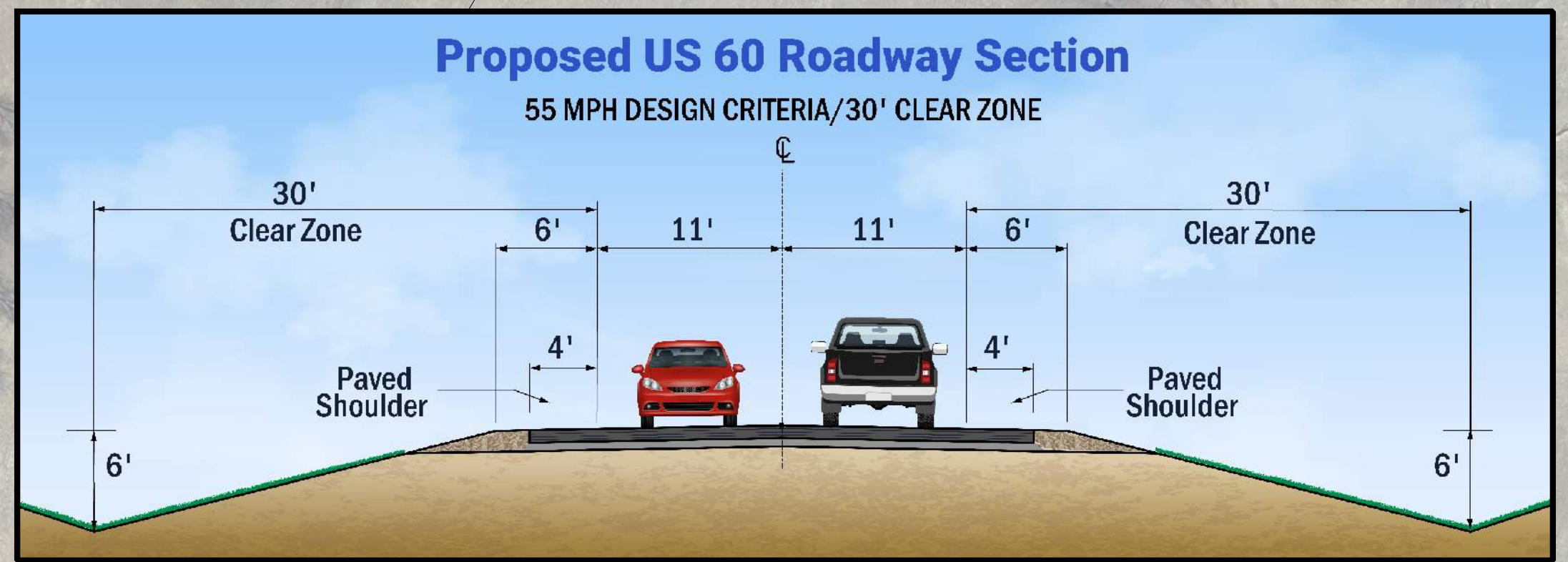
MORGANFIELD →



PI STA 203+15.28
Δ = 15°48'32" LT
T = 305.45'
L = 607.02'
R = 2200.00'
E = 21.10'
e = 5.6%
Runoff = 124'
Runout = 45'

PI STA 248+75.92
Δ = 08°03'33" LT
T = 352.23'
L = 703.30'
R = 5000.00'
E = 12.39'
e = 2.8%
Runoff = 62'
Runout = 45'

PI STA 218+44.96
Δ = 23°57'08" RT
T = 466.67'
L = 919.70'
R = 2200.00'
E = 48.95'
e = 5.6%
Runoff = 124'
Runout = 45'



LEGEND	
	PROP ROADWAY
	DISTURB LIMITS
	PROP RIGHT OF WAY
	PROP EASEMENT
	EXISTING RIGHT OF WAY
	PROPERTY LINE
	PROP CULVERT/STORM SEWER
	PROP DITCH

