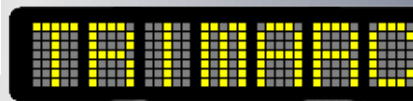




# District 3 Traffic Incident Management Team

## 2015 4th Quarter December 1<sup>st</sup> , 2015



# Agenda – Dec. 1, 2015

- **Welcome / Introductions**
- **Update on open issues / projects**
  - D-3 KYTC Major Incident Detour Plans – Natcher Pkwy
  - Incident radio communication w/ KYTC
- **D-3 KYTC IM Contact List update**
- **Safety Improvement @ I-65 / Natcher interchange**
- **Snow & Ice planning update**
- **2016 TIM team – meeting locations, content**
- **Conclusion / Next Meeting**

# Interstate / Parkway Major Incident Plan

**Major\***—expected duration >2 hours

Offsite detour, communication, TTC involving transportation & other offsite resources

## Goal

- 1. Designate and document, in advance, alternate routes and response plan
- 2. Implement tools to communicate plan to responders and traveling public
- 3. Identify agencies / crews responsible for implementing plan in emergency responses

***Everyone has a plan & is on the same plan***

**GOAL:** *Improve safety for responders and traveling public, relieve burden on emergency responders, integrate KYTC into incident resolution, minimize disruption to affected communities and commerce, and restore normal traffic flow as soon as possible.*

**Incident Duration**

- Early, realistic estimate of anticipated incident duration is critical :
  - ▶ Estimated duration ≤ 2 hrs, traffic control will fall primarily to on-scene law enforcement, fire, or EM responders. KYTC response time will be extended outside 7a-3p weekdays beyond initial supervisor response to assist Unified Command.
  - ▶ Estimated duration 2+ hrs, KYTC can mobilize and start assuming traffic diversion, detour, queue clearing.

Decision for detour activation by initial IC must be made early to be effective. Emergency Comm. Centers should make KYTC notification of detour activation as soon as possible.

**Notification / Request for KYTC**

**Utilize Current District 3 contacts for each county for:**

- ▶ Interstate / Parkway anticipated full closure >15 minutes or multiple lanes ≥ 1 hr
- ▶ Full closure of any state roadway anticipated ≥ 1 hr
- ▶ Any other emergency incidents resulting in major impact to Interstate, Parkway or major state roadway,
- ▶ Non-crash related roadway hazards / conditions
- ▶ Requests for KYTC personnel or equipment response to incidents

**Contact KYTC TOC (502) 564-2080 24/7 for SAFE Patrol motorist assistance**

**Detour Routes & Activation**

Primary detour routes for each I-65 & Parkway segment (from exit to exit) have been identified, mapped, and signed . Routes have permanent guide signs supplemented by some pre-placed flip-down detour signs at critical points.

- Route maps and detour flip-down sign locations provided to KSP Post 3 and local EOCs/Comm. Centers.
- Signs must be "released" to flip-down upon decision to activate detour. Initial deployment will be by emergency personnel at request of IC via local Comm. Center.
- Release is done by tripping 2 gate latches & will require a 3-5 ft pole / broom handle or other reach extender. No other special tool or training is required.
- KYTC personnel will restore signs to normal on detour termination.



# Plan Brief



# Plan Status Update

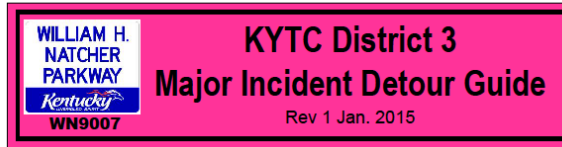
I-65  
0 – 54 mp



24 hour reporting & coordination point

- ***Complete***
- ***Route marked***

Natcher Pkwy  
0.0 – 43 mp



- ***Complete***
- ***Route marked***

Cumberland Pkwy  
0.0 – 36.1 mp



- ***Complete***
- ***Route marked***

Will schedule route / plan training with each county crew & EM during 1<sup>st</sup> Qtr 2016



[CITIZENS](#) [BUSINESS](#) [PROGRAMS & SERVICES](#) [NEWS & EVENTS](#) [MAPS](#) [ASSISTANCE](#) [ABOUT](#)

Search this site...

[Home](#) > [District 3](#)

## Traffic Incident Management

### Upcoming Meeting Information:

**When:** Tuesday, February 3rd, 2015

**Time:** 9:00 a.m.

**Where:** KCTCS - SFRT Area 4 Training Center, 825 Morgantown Road, Bowling Green, KY 42101 ([Map it](#))

### What is Traffic Incident Management or TIM?

TIM consists of a planned and coordinated multi-disciplinary process to detect, respond to, and clear traffic incidents so that traffic flow may be restored as safely and quickly as possible. Effective TIM reduces the duration and impacts of traffic incidents and improves the safety of motorists, crash victims and emergency responders.

### The District 3 IM Team

The District 3 team was established as one of the first multi-disciplinary IM teams in the state in 2005 and continuously active since that time. The team consists of TIM planning & response stakeholders in the 10 county District 3 area, including federal, state & local transportation, law enforcement, emergency management, area development district, health department, & environmental protection agencies as well as private towing / recovery and environmental cleanup companies. Our goal is to build relationships and to work toward finding solutions to issues affecting the safety and efficiency of all responders AND the traveling public when crashes and other incidents happen on the major roadways of District 3.

We meet on a quarterly basis on dates provided on this pages, and welcome all interested TIM stakeholders to attend. If you have questions, contact the D-3 IM Coordinator, Jon Lam, at 270-746-7898, or cell 270-392-8760 or e-mail [jon.lam@ky.gov](mailto:jon.lam@ky.gov).

### Major Incident Detour Guides:



[D-3 IM Contacts 12-2014](#)

[Useful Links:](#)

[Meeting Archives](#)

### Contact Info

Department of Highways, District Three  
 900 Morgantown Road  
 Bowling Green, Kentucky 42101  
 Phone: (270) 746-7898  
 Fax: (270) 746-7643  
 Hours: 7am - 3:30pm CST, M-F  
[Map it](#)

### District 3

- [Home](#)
- [Administration](#)
- [Adopt-A-Highway](#)
- [Facilities](#)
- [KEEN](#)
- [Kentucky Office of Highway Safety](#)
- [Snow & Ice](#)
- [Traffic Incident Management](#)

### KYTC Resources

- [Business & Occupational Development](#)
- [Check Road Conditions with 511](#)
- [Drivers History Information](#)
- [Driver Licensing Information](#)
- [Enroll in State Traffic School](#)
- [Highway Safety](#)
- [How To Bid On Projects](#)
- [How To Get A Permit](#)
- [Online Vehicle Registration](#)
- [Planning Studies & Reports](#)
- [Report A Pothole or Road Concern](#)
- [Report Waste Fraud and Abuse](#)
- [Safe Patrol](#)



# Incident Radio Communications

Formal project initiated in January 2015 to establish radio comms between KYTC SAFE & Maint crews & emergency agencies

**Goal to make hazard & incident response more efficient & safe**

Past :

- No capability in almost any county along I-65 /Parkway corridor – either SAFE or Maint. Crew.
- No LOAs or protocol / procedures documented

Current / future:

- New dual/band portable radios issued to SAFE trucks & county Maintenance crews.
- Ability for direct communications enroute & on-scene between KYTC and local incident commanders / responders.
- LOAs/MOU's in place, protocol documented

# Incident Radio Communications

## Simpson:

- Direct access for comms on “Simpson Co. Fire B” channel.

## Barren:

- Direct access for comms on “Barren Co. Fire Alternate” channel (repeated or talk-around)

## Warren:

- Equipment in place as of end of November @ WC S.O. dispatch. Ties KYTC system to WC Public Safety system on dedicated talk group (MA5).
- Will finalize protocol for use today (12/1) and brief all involved. Can be utilized immediately.

Butler / Metcalfe – early 2016



# District IM Contact Update

**KYTC Dept of Highways District 3 Incident Contacts Rev. 12/01/2015**

I-65 / Parkway Motorist Assists / Debris in Roadway KYTC TOC & SAFE Patrol 502-564-2080

For TRAFFIC SIGNAL ISSUES (all counties):

#1: Jon Whitaker 270-792-4797 #2: Josh Amos 270-799-9013

For all other issues and incidents:

**1st : By County**

**2nd: County Not Known / Backup Contacts**

**April 16th - October 31st**

County	Interstate / Parkway limits	KYTC Maintenance	
Allen Co.		Eddie Foster - Super II	270-622-9262
		Lee Blankenship - Super. I	270-606-3205
		Ashley Graves - TES	270-792-9607
Barren Co.	>I-65 43-54 mm	Chad Martin - Super. II	270-791-0957
	>Cumberland 0-22.4 mm	Daryl Mutter - Super. I	270-590-5290
		Blake Williams - TES	270-670-7525
Butler Co.	>Natcher 17.5-37 mm	Keith Embry - Super. II	270-991-0552
		Russell Haynes - Super. I	270-991-9150
		Justin Young - TES	270-991-0536
Edmonson Co.		Kevin Skaggs - Super. II	270-991-0542
		Chris Logsdon - Super. I	270-792-9603
		Blake Williams - TES	270-670-7525
Logan Co.		Joe Wilson - Super. II	270-847-8289
		Kelly Wilson - Super. I	270-779-3829
		Justin Young - TES	270-991-0536
Metcalf Co.	>Cumberland 22.4-36.2 mm	Jared Shaw - Super. II	270-576-8857
		Steve White - Super. I	270-991-2624
		Blake Williams - TES	270-670-7525
Monroe Co.		Shawn Massingille - Super II	270-991-0543
		Mark Walker - Super. I	270-792-9602
		Ashley Graves - TES	270-792-9607
Simpson Co.	>I-65 0-13.5 mm	Shawn Cary - Super. II	270-779-0834
		James Stanley - Super. I	270-779-3598
		Ashley Graves - TES	270-792-9607
Todd Co.		Michael Daniel - Super II	270-991-0557
		David Blake - Super I	270-847-7022
		Justin Young - TES	270-991-0536
Warren Co.	>I-65 13.5-43 mm	Brian Hendrick - Super II	270-282-5023
	>Natcher 0-17.5 mm	Marcus Hill - Super I	270-991-0548
		Stuart Payton - TES	270-991-0555

#1: Jon Lam	270-392-8760
#2: Tim Sharp	270-991-9147
#3: Kevin Gearlds	270-779-2335

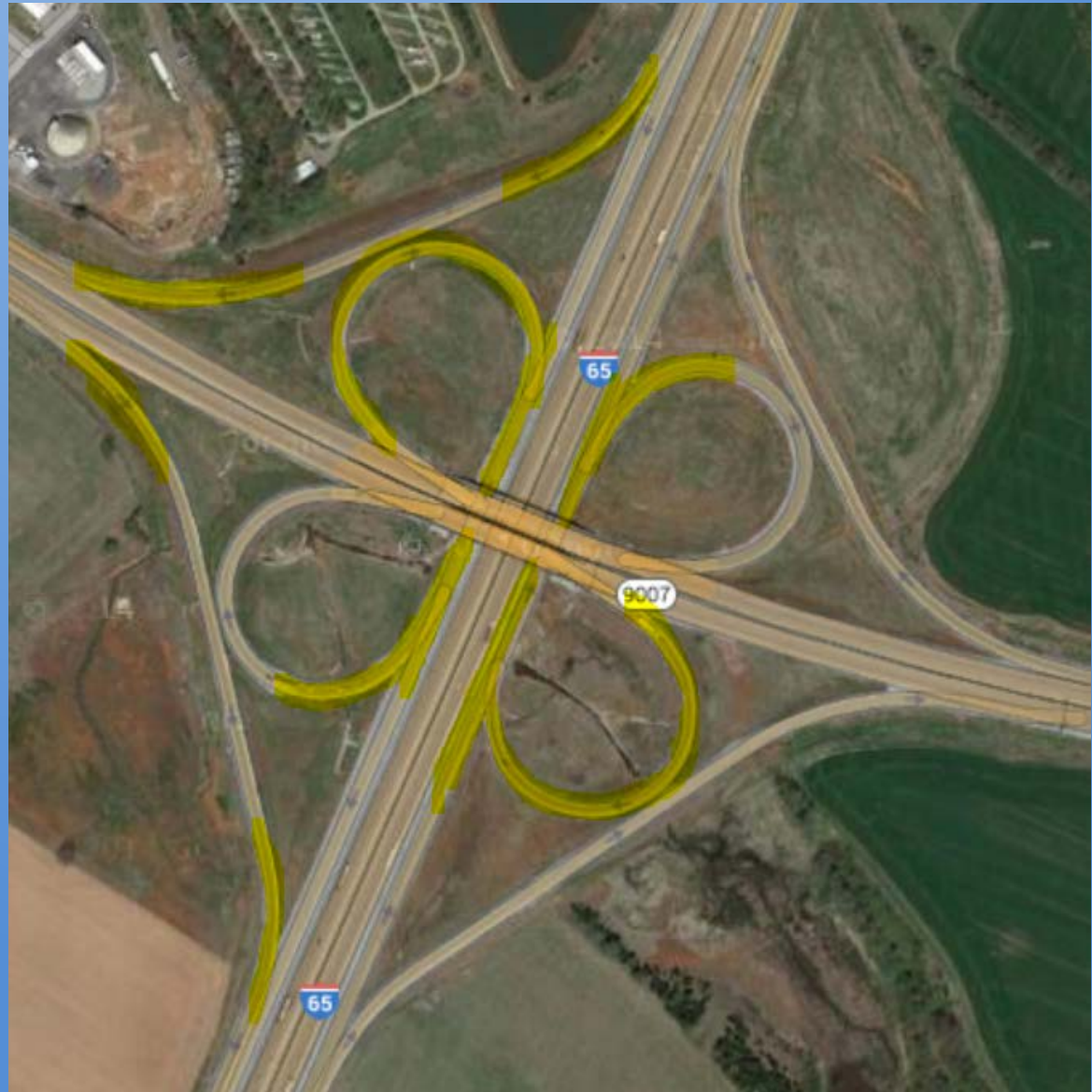
– **Local agencies notify county contacts for:**

- Damage to roadway, guardrail, signs, etc.
- Response to incident by Maintenance crew for salt, traffic control help, cleanup assistance, repairs, etc.
- KYTC personnel make TOC notification for additional resources, DMS activation, etc.

– **SAFE Patrol requests for MA & incident support go to TOC.**

# Safety Improvement I-65 / Natcher Pkwy Interchange

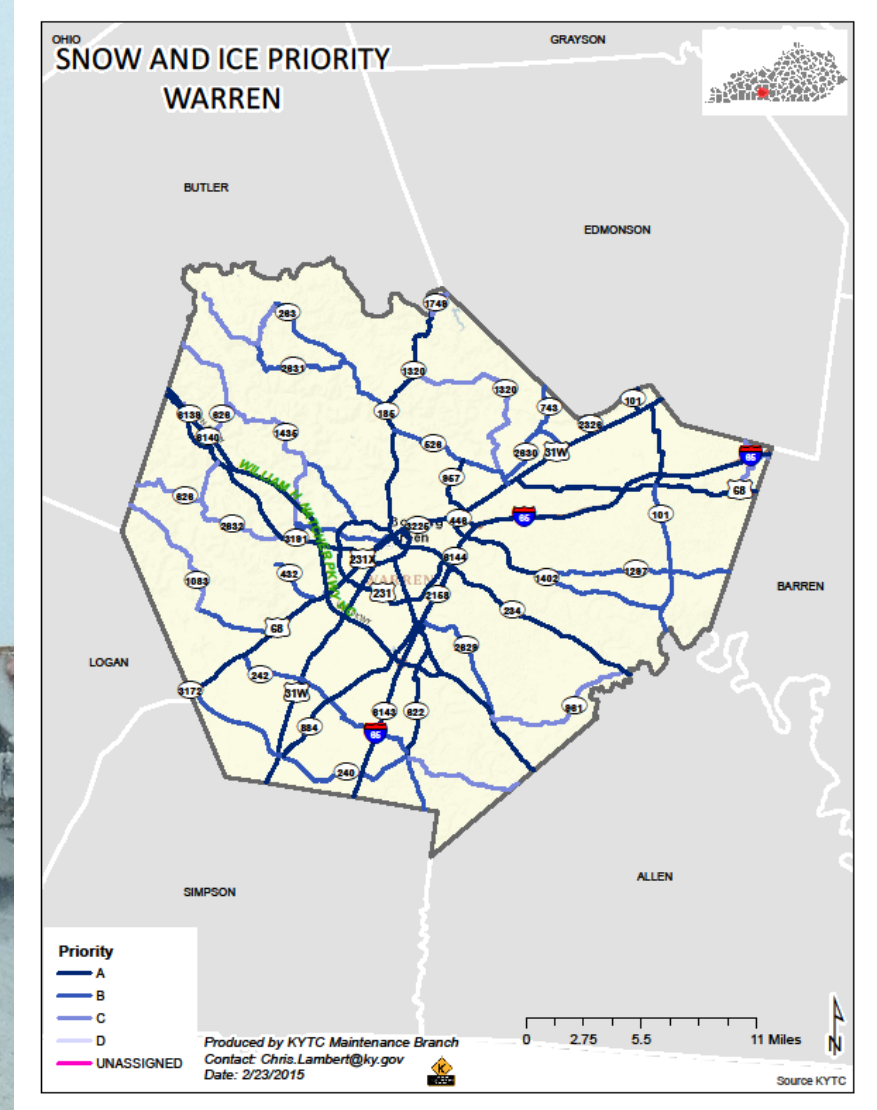
- High-friction surface coating applied in October to increase slip/skid resistance.
- Targeted highest crash incidence ramp & C/D road segments
- Specifically to improve wet weather driveability.





# Snow / Ice Planning Update

- 2015/2016 Snow priority maps are posted on our District webpage.
- State routes prioritized A through D.
- Each Dist 3 County has a map.

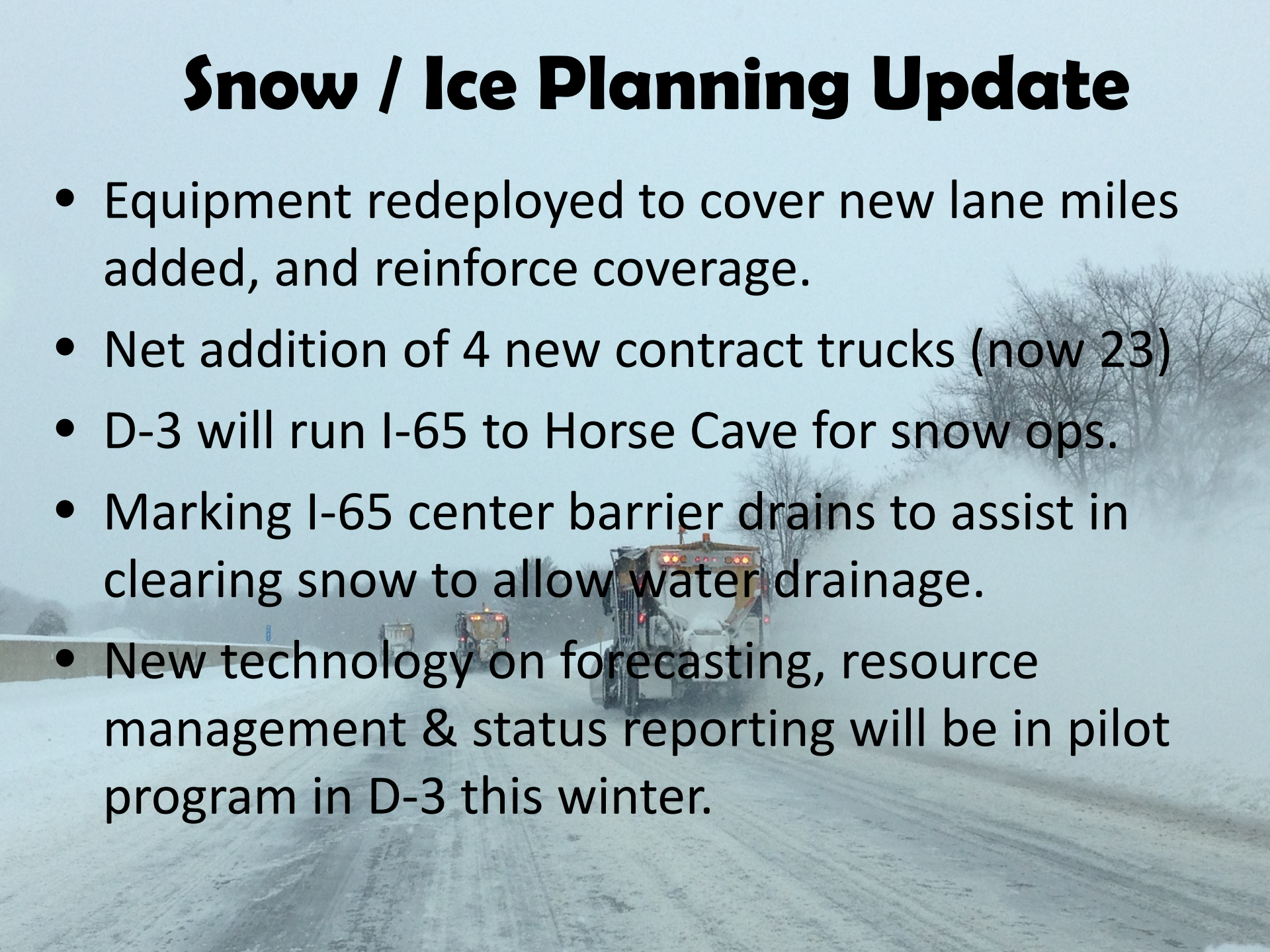


<http://transportation.ky.gov/District-3/Pages/Snow-and-Ice.aspx>



# Snow / Ice Planning Update

- Equipment redeployed to cover new lane miles added, and reinforce coverage.
- Net addition of 4 new contract trucks (now 23)
- D-3 will run I-65 to Horse Cave for snow ops.
- Marking I-65 center barrier drains to assist in clearing snow to allow water drainage.
- New technology on forecasting, resource management & status reporting will be in pilot program in D-3 this winter.





# Snow / Ice Planning Update

- New technology on forecasting, resource management & status reporting will be in pilot program in D-3 this winter.
- Overview by Wes Watt – District 3 PIO





# **KYTC / Waze Partnership**



Neighboring TIM groups -

- District 4 E'town TIM
- TN DOT

**Other Team / Meeting Issues?**

# **Other Districts TIM**

- **Chris Jessie / Kevin Blain – District 4 E'town**
- **TN DOT**

# TIM Resources



[www.timnetwork.org](http://www.timnetwork.org)

**RESPONDERSAFETY**  
.com

[www.respondersafety.com](http://www.respondersafety.com)



# D-3 Traffic Impact Updates

Most current information is always available  
from PIO Wes Watt via



@KYTCDistrict3



kytcdistrict3



# 2016 Meetings

Share information / educate other team members on what is new or important for your role in Incident Management.

\*\*\*\*IM Team is ALL of us not just KYTC \*\*\*\*

Increase participation from & value to “missing” partners – how?

Location rotating between Bowling Green, Glasgow & Franklin?

Partners take turns hosting meetings?

# Next Meeting

## 2016 1<sup>st</sup> Qtr.

### Tues. March 1st, 2016



Presentations & other D-3 IM Team files can be found at  
<http://transportation.ky.gov/District-3/Pages/TIM.aspx>



Jon Lam  
District 3 IM Coordinator  
Office 270-746-7898 xt 225  
Cell 270-392-8760 or 270-784-8570  
[Jon.lam@ky.gov](mailto:Jon.lam@ky.gov)