



KYTC District 3

Major Incident Detour Guide

Rev 2 May 2015

**To notify KYTC of any incident or hazardous condition
see current D-3 IM Contact List.**

**For SAFE Patrol roadway assistance contact TOC 24/7
502-564-2080**

Objective

1. Designate and document, in advance, alternate routes and response plan
2. Implement tools to communicate plan to responders and traveling public
3. Identify agencies responsible for implementing plan

Incident Duration & Plan Implementation

For use only for complete closure of roadway with **anticipated duration >2 hrs**, OR lane closures during heavy traffic periods at discretion of KYTC and Incident Command. For incidents with anticipated duration of –

<2 hrs: Local diversion / detour only, decision & implementation responsibility of local emergency agencies responding – i.e. FD, EMA, Law Enforcement.

>2 hrs: Responsibility transitions to KYTC for implementation & maintenance of diversion / detour until roadway is at least partially reopened.

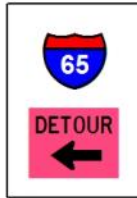
Detour route and termination is ultimately at the discretion of the Incident Command with input from KYTC based on particular incident conditions (hazmat evacuation zone, weather conditions, etc).

District plan contact: Jon Lam, D-3 IM Coordinator (270)-392-8760 jon.lam@ky.gov

Contents

Segment	Page
I-65 0 - 2 MM.....	3
I-65 2 - 6 MM.....	4
I-65 6-20 MM.....	5
I-65 20-22 MM.....	6
I-65 22-26 MM.....	7
I-65 26-28 MM.....	8
I-65 28-36 MM.....	9
I-65 36-38 MM.....	10
I-65 38-43 MM.....	11
I-65 43-48 MM NB	12
I-65 43-48 MM SB	13
I-65 48-53 MM.....	14
I-65 53-58 MM.....	15
Exit Diversion Setup - 2 lanes to Exit	16
Exit Diversion Setup - 3 lanes to Exit.....	17

I-65 DETOUR ROUTE TN STATE LINE - EXIT 2 SIMPSON COUNTY



KYTC Incident Contact 24/7:
TOC (502)-564-2080

KSP Post 3 270-782-2010
Local Police 270-586-8819
EMA 270-586-0531

NB
↑
>Ex 117 NB (in TN) to TN 52
>Rt on TN 52 E
>Left on US31W N for 5.6 mi
>Return to I-65 @ 2 mm

SB
↓
>Ex 2 SB to US31W
>Left on US31W S, go 5.6 mi
>Rt on TN 52 W
>Return to I-65 @ 117 mm TN

SB: Close SB entr. ramp including
2 LH turn lanes from US31W NB

Divert 3 SB lanes to Ex 2

EXIT 2
Franklin

SB: DMS @ I-65 32 & 55 SB

CRASH AHEAD 2 MM LANES BLOCKED	ALL TRAFFIC DETOUR EXIT 2
--	---

NB: TDOT DMS NB

CRASH AHEAD IN KY LANES	DETOUR EX 117 US31W N
--------------------------------------	------------------------------------

NB only: Close NB ramp
from KY Welcome Center

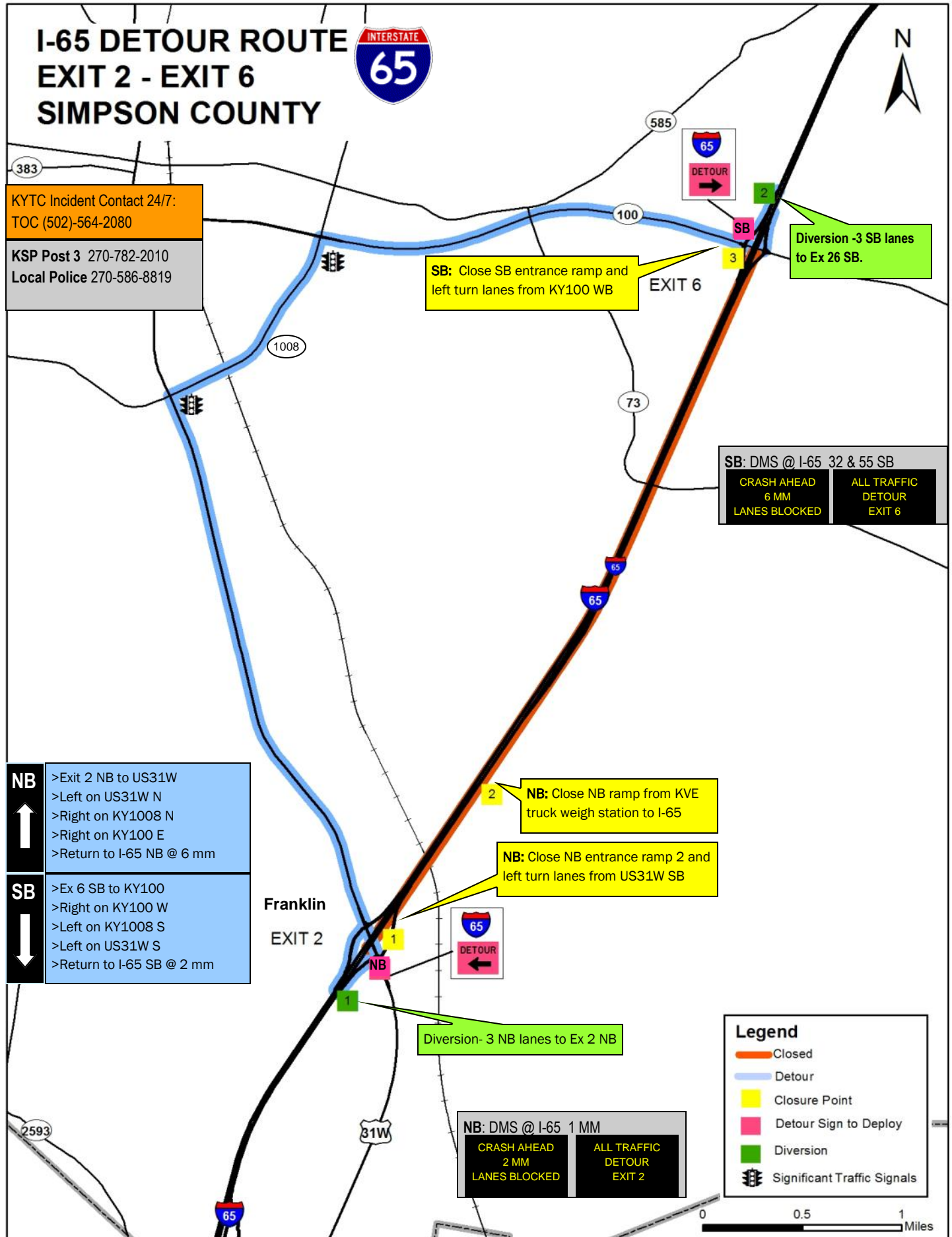
Legend

- Closed
- Detour
- Closure Point
- Detour Sign to Deploy
- Diversion
- Significant Traffic Signals



KY / SIMPSON CO

TN / SUMNER CO



I-65 DETOUR ROUTE EXIT 6 - EXIT 20 SIMPSON COUNTY WARREN COUNTY

KYTC Incident Contact 24/7:
TOC (502)-564-2080

KSP Post 3 270-782-2010
Local Police (Simpson) 270-586-8819
(Warren) 270-393-4000
EMA (Simpson) 270-586-0531
(Warren) 270-842-1633

SB: DMS @ I-65 32 & 55 MM

CRASH AHEAD 20 MM LANES BLOCKED	ALL TRAFFIC DETOUR EXIT 20 B
---------------------------------------	------------------------------------

SB: DMS @ US231 6 MM NB

CRASH I-65 SOUTH LANES BLOCKED	DETOUR NATCHER PKWY N TO US31W
--------------------------------------	--------------------------------------

NB

- >Ex 6 NB to KY100 W
- >Left on KY100 W
- >Right on KY1008 N (Harding Rd)
- >Right on US31W N for 14.5 mi
- >Right on Wm. Natcher Pkwy S
- >Return to I-65 at 20 mm

SB

- >Ex 20B to Wm. Natcher Pkwy NB
- >WNP Ex 6 to US31W
- >Left on US31W S for 14.5 mi
- >Left on KY1008 S (Harding Rd)
- >Left on KY100 E
- >Return to I-65 SB @ 6 mm

EXIT 20

Diversion- 3 lanes mainline SB to C/D road, and C/D road to SB Ex 20B

Close Natcher Pkwy SB Ex 2B & Ex 2B from WNP NB

Close NB ramp from KY100

NB: DMS @ US31W 7 MM

I-65 USE NATCHER PKWY SOUTH	
-----------------------------------	--

NB: DMS @ I-65 1 MM

CRASH AHEAD 6 MM LANES BLOCKED	ALL TRAFFIC DETOUR EXIT 6
--------------------------------------	---------------------------------

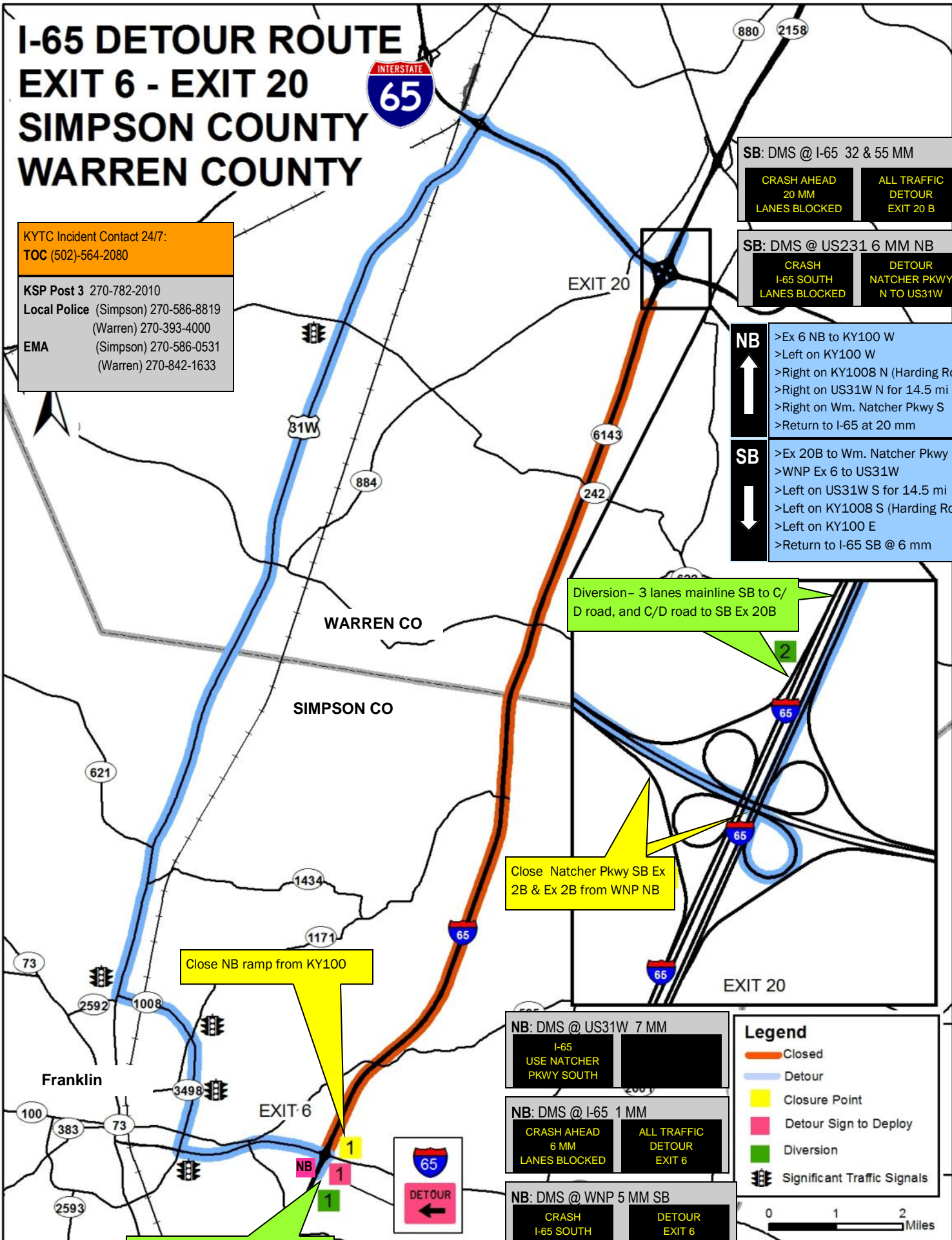
NB: DMS @ WNP 5 MM SB

CRASH I-65 SOUTH LANES BLOCKED	DETOUR EXIT 6 US31W S
--------------------------------------	-----------------------------

Legend

- Closed
- Detour
- Closure Point
- Detour Sign to Deploy
- Diversion
- Significant Traffic Signals

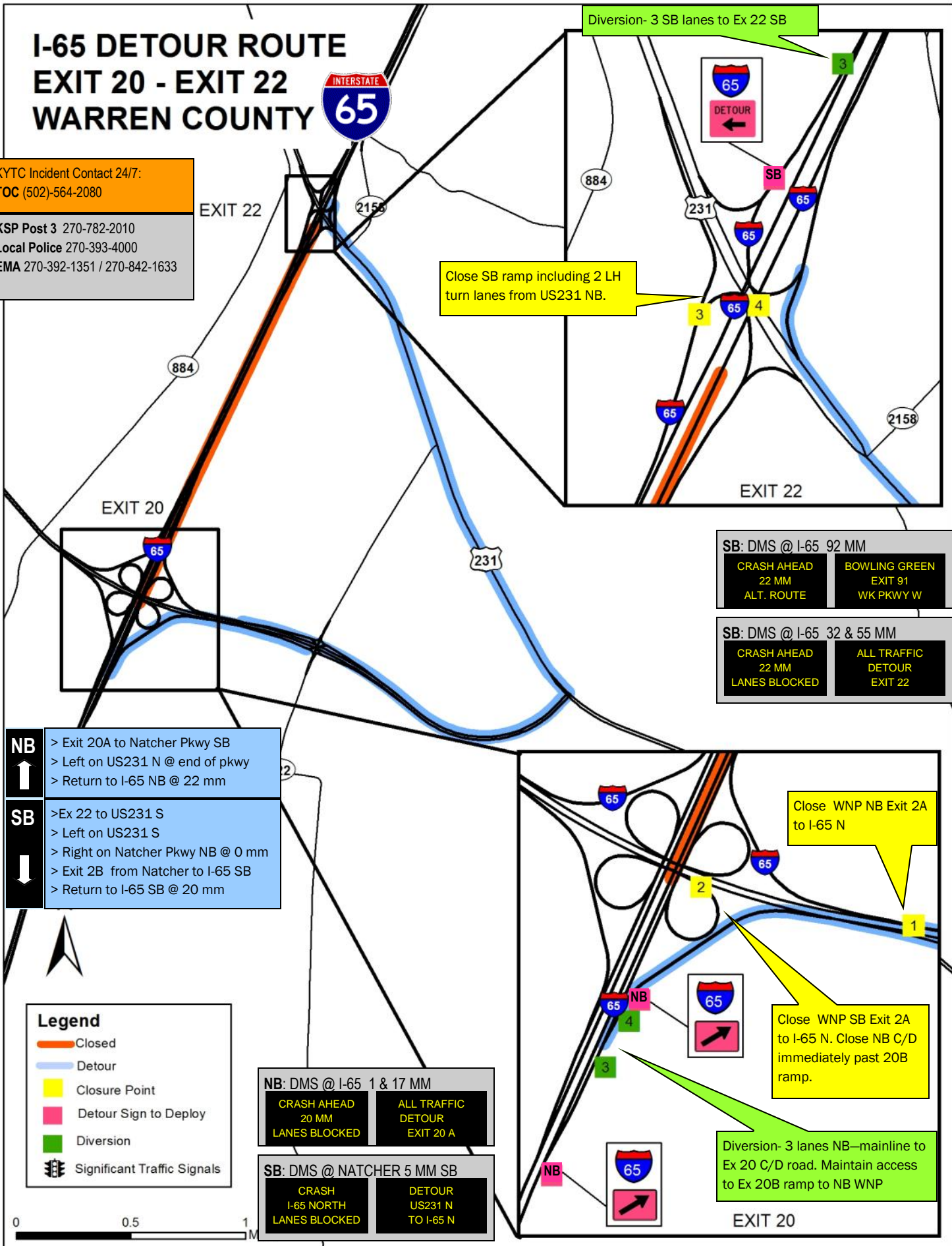
0 1 2 Miles



I-65 DETOUR ROUTE EXIT 20 - EXIT 22 WARREN COUNTY

KYTC Incident Contact 24/7:
TOC (502)-564-2080

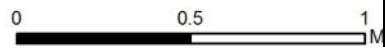
KSP Post 3 270-782-2010
Local Police 270-393-4000
EMA 270-392-1351 / 270-842-1633



- NB**
↑
- > Exit 20A to Natcher Pkwy SB
 - > Left on US231 N @ end of pkwy
 - > Return to I-65 NB @ 22 mm
- SB**
↓
- > Ex 22 to US231 S
 - > Left on US231 S
 - > Right on Natcher Pkwy NB @ 0 mm
 - > Exit 2B from Natcher to I-65 SB
 - > Return to I-65 SB @ 20 mm

Legend

- Closed
- Detour
- Closure Point
- Detour Sign to Deploy
- Diversion
- Significant Traffic Signals



NB: DMS @ I-65 1 & 17 MM

CRASH AHEAD 20 MM LANES BLOCKED	ALL TRAFFIC DETOUR EXIT 20 A
---------------------------------------	------------------------------------

SB: DMS @ NATCHER 5 MM SB

CRASH I-65 NORTH LANES BLOCKED	DETOUR US231 N TO I-65 N
--------------------------------------	--------------------------------

SB: DMS @ I-65 92 MM

CRASH AHEAD 22 MM ALT. ROUTE	BOWLING GREEN EXIT 91 WK PKWY W
------------------------------------	---------------------------------------

SB: DMS @ I-65 32 & 55 MM

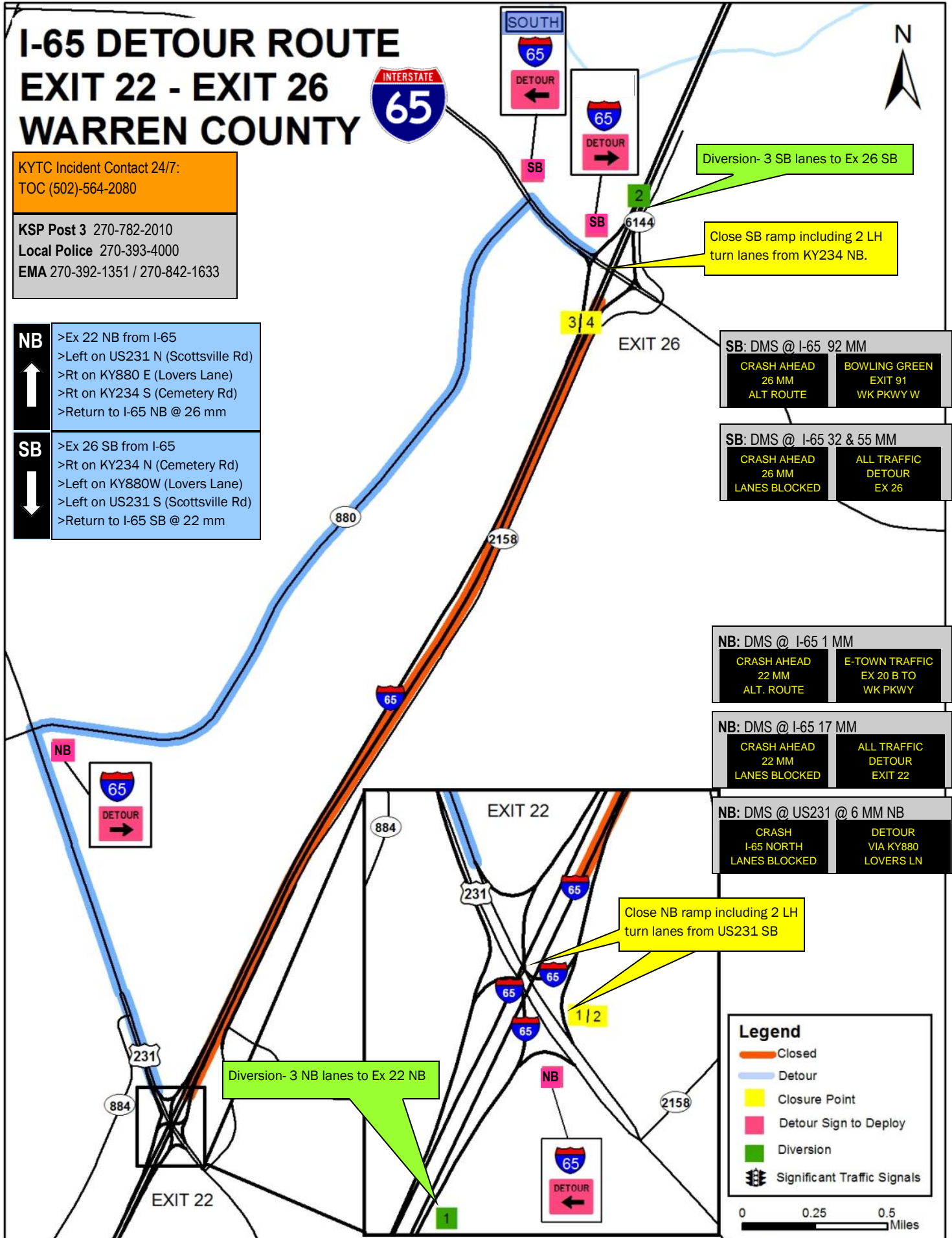
CRASH AHEAD 22 MM LANES BLOCKED	ALL TRAFFIC DETOUR EXIT 22
---------------------------------------	----------------------------------

I-65 DETOUR ROUTE EXIT 22 - EXIT 26 WARREN COUNTY

KYTC Incident Contact 24/7:
TOC (502)-564-2080

KSP Post 3 270-782-2010
Local Police 270-393-4000
EMA 270-392-1351 / 270-842-1633

- NB**
↑
- >Ex 22 NB from I-65
 - >Left on US231 N (Scottsville Rd)
 - >Rt on KY880 E (Lovers Lane)
 - >Rt on KY234 S (Cemetery Rd)
 - >Return to I-65 NB @ 26 mm
- SB**
↓
- >Ex 26 SB from I-65
 - >Rt on KY234 N (Cemetery Rd)
 - >Left on KY880W (Lovers Lane)
 - >Left on US231 S (Scottsville Rd)
 - >Return to I-65 SB @ 22 mm



I-65 DETOUR ROUTE EXIT 26 - EXIT 28 WARREN COUNTY



KYTC Incident Contact 24/7:
TOC (502)-564-2080

KSP Post 3 270-782-2010
Local Police 270-393-4000
EMA 270-392-1351 / 270-842-1633

SB: DMS @ KY446 EB

I-65 SOUTH CRASH NO ENTRY	DETOUR VIA US31W S TO KY234
---------------------------------	-----------------------------------

SB: DMS @ I-65 32 MM

CRASH AHEAD 28 MM LANES BLOCKED	DETOUR EXIT 28 TO US31W S
---------------------------------------	---------------------------------

SB: DMS @ I-65 92 MM

CRASH AHEAD 28 MM ALT. ROUTE	BOWLING GREEN EXIT 91 WK PKWY W
------------------------------------	---------------------------------------

SB: DMS @ I-65 55 MM

CRASH AHEAD 28 MM LANES BLOCKED	ALL TRAFFIC DETOUR EXIT 28
---------------------------------------	----------------------------------

NB
↑

- > Ex 26 to KY234 N
- > Left on KY234 N (Cemetery Rd)
- > Right on US31W N (Riverview)
- > Right on US31W N (Louisville Rd)
- > Merge Rt on KY446
- > Return to I-65 NB @ 28 mm

SB
↓

- > Ex 28 SB to KY446
- > Follow signs for US31W S to Bowling Green
- > Merge on to US31W S
- > Left on US31W S
- > Left on KY234 S
- > Return to I-65 SB @ 26 mm

Diversion - 3 SB lanes to Ex 28 SB

Close SB entrance ramp & KY446 RH lane @ Corvette Dr

Close NB ramp including 2 LH turn lanes from KY234 EB

Diversion - 3 NB lanes to Ex 26 NB

NB: DMS @ I-65 1 MM

CRASH AHEAD 26 MM ALT. ROUTE	E-TOWN EX 20 B TO WK PKWY E
------------------------------------	-----------------------------------

NB: DMS @ I-65 17 MM

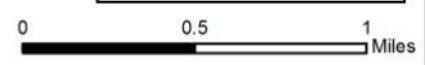
CRASH AHEAD 26 MM ALT. ROUTE	ALL TRAFFIC DETOUR EXIT 26
------------------------------------	----------------------------------

SB: DMS @ NATCHER PKWY 5 MM

CRASH I-65 NORTH LANES BLOCKED	DETOUR EXIT 26
--------------------------------------	-------------------

Legend

- Closed
- Detour
- Closure Point
- Detour Sign to Deploy
- Diversion
- Significant Traffic Signals

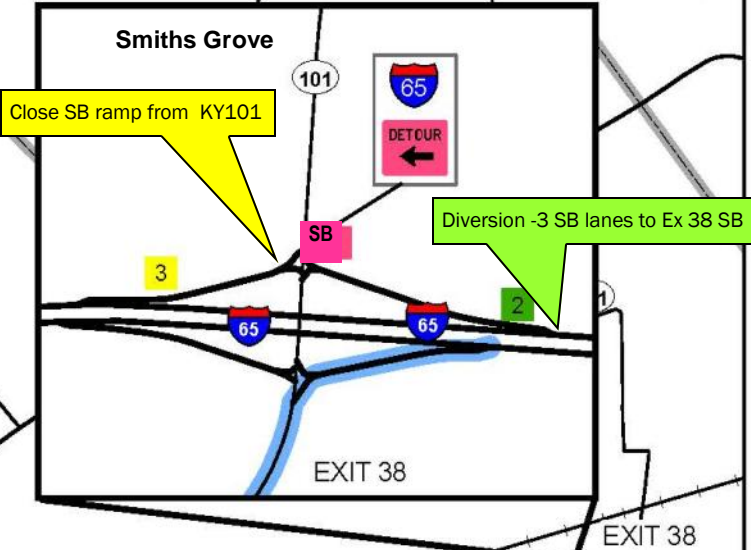


I-65 DETOUR ROUTE EXIT 28 - EXIT 36 WARREN COUNTY

KYTC Incident Contact 24/7:
TOC (502)-564-2080

KSP Post 3 270-782-2010
Local Police 270-393-4000
EMA 270-392-1351 / 270-842-1633

- NB**
↑
- >Exit 28 to KY446
 - >Follow signs for US31W N
 - >US31W N for 3.2 mi
 - >Right on US68 E for 6.9 mi
 - >Left on KY101 N
 - >Return to I-65 NB @ 38 mm
- SB**
↓
- >Ex 38 to KY101
 - >Left on KY101 S
 - >Right on US68 W for 6.9 mi
 - >Left on US31W S for 3.2 mi
 - >Left on KY446
 - >Return to I-65 S at 28 mm



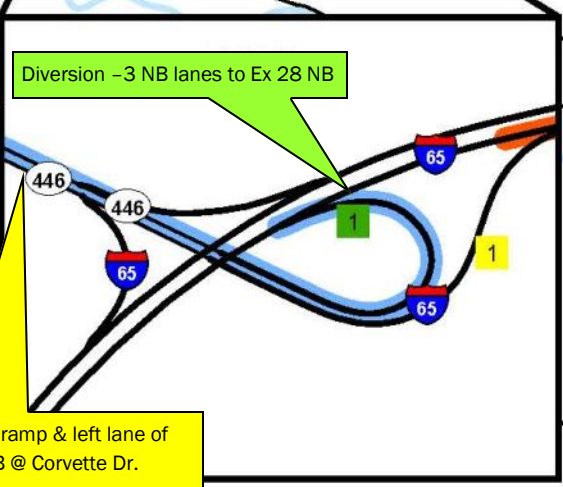
Close SB entrance ramp from US68

SB: DMS @ I-65 92 MM

CRASH AHEAD 38 MM ALT. ROUTE	BOWLING GREEN EXIT 91 WK PKWY W
---	--

SB: DMS @ I-65 55 & NUNN PKWY 3 MM

CRASH AHEAD 38 MM LANES BLOCKED	ALL TRAFFIC DETOUR EXIT 38
--	---



NB: DMS @ KY446 EB

I-65 N CRASH LANES BLOCKED NO ENTRY	NORTH BND TRAFFIC USE US31W N
--	--

NB: DMS @ I-65 17 MM

CRASH AHEAD 28 MM LANES BLOCKED	ALL TRAFFIC DETOUR EXIT 28
--	---

NB: DMS @ I-65 1 MM

CRASH AHEAD 28 MM ALT. ROUTE	E-TOWN EXIT 20 B TO WK PKWY E
---	--

Legend

- Closed
- Detour
- Closure Point
- Detour Sign to Deploy
- Diversion
- Significant Traffic Signals



I-65 DETOUR ROUTE EXIT 36 - EXIT 38 WARREN COUNTY



KYTC Incident Contact 24/7:
TOC (502)-564-2080

KSP Post 3 270-782-2010
Local Police 270-393-4000
EMA 270-392-1351 / 270-842-1633

SB: DMS @ I-65 92 MM

CRASH AHEAD 38 MM ALT ROUTE	BOWLING GREEN EX 91 WK PKWY W
-----------------------------------	-------------------------------------

SB: DMS @ I-65 55 SB & Nunn WB 3

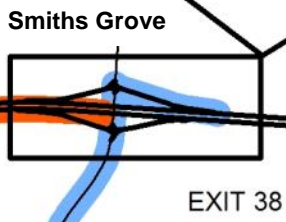
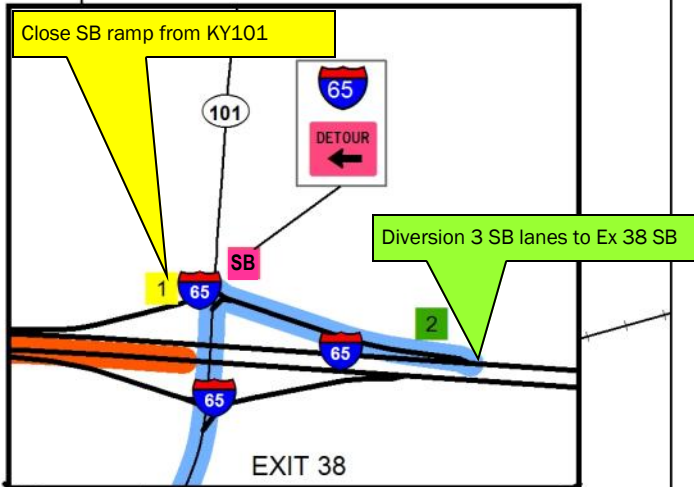
CRASH AHEAD 38 MM LANES BLOCKED	ALL TRAFFIC DETOUR EXIT 38
---------------------------------------	----------------------------------

NB
↑

- >Exit 36 to US68
- >Right on US68 E
- >Left on KY101 N (to Smiths Grove)
- >Return to I-65 NB @ 38 mm

SB
↓

- >Exit 38 to KY101
- >Left on KY101 S
- >Right on US68 W
- >Return to I-65 SB @ 36 mm



1

EXIT 36

Diversion- 3 NB lanes to Ex 36 NB

NB: DMS @ I-65 1 MM

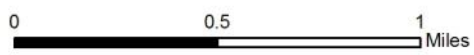
CRASH AHEAD 36 MM ALT ROUTE	E-TOWN EX 20 B TO WK PKWY E
-----------------------------------	-----------------------------------

NB: DMS @ I-65 17 NB & KY446 EB

CRASH AHEAD 36 MM LANES BLOCKED	ALL TRAFFIC DETOUR EXIT 36
---------------------------------------	----------------------------------

Legend

- Closed
- Detour
- Closure Point
- Detour Sign to Deploy
- Diversion
- Significant Traffic Signals



I-65 DETOUR ROUTE

EXIT 38 - EXIT 43

BARREN COUNTY

EDMONSON COUNTY

WARREN COUNTY

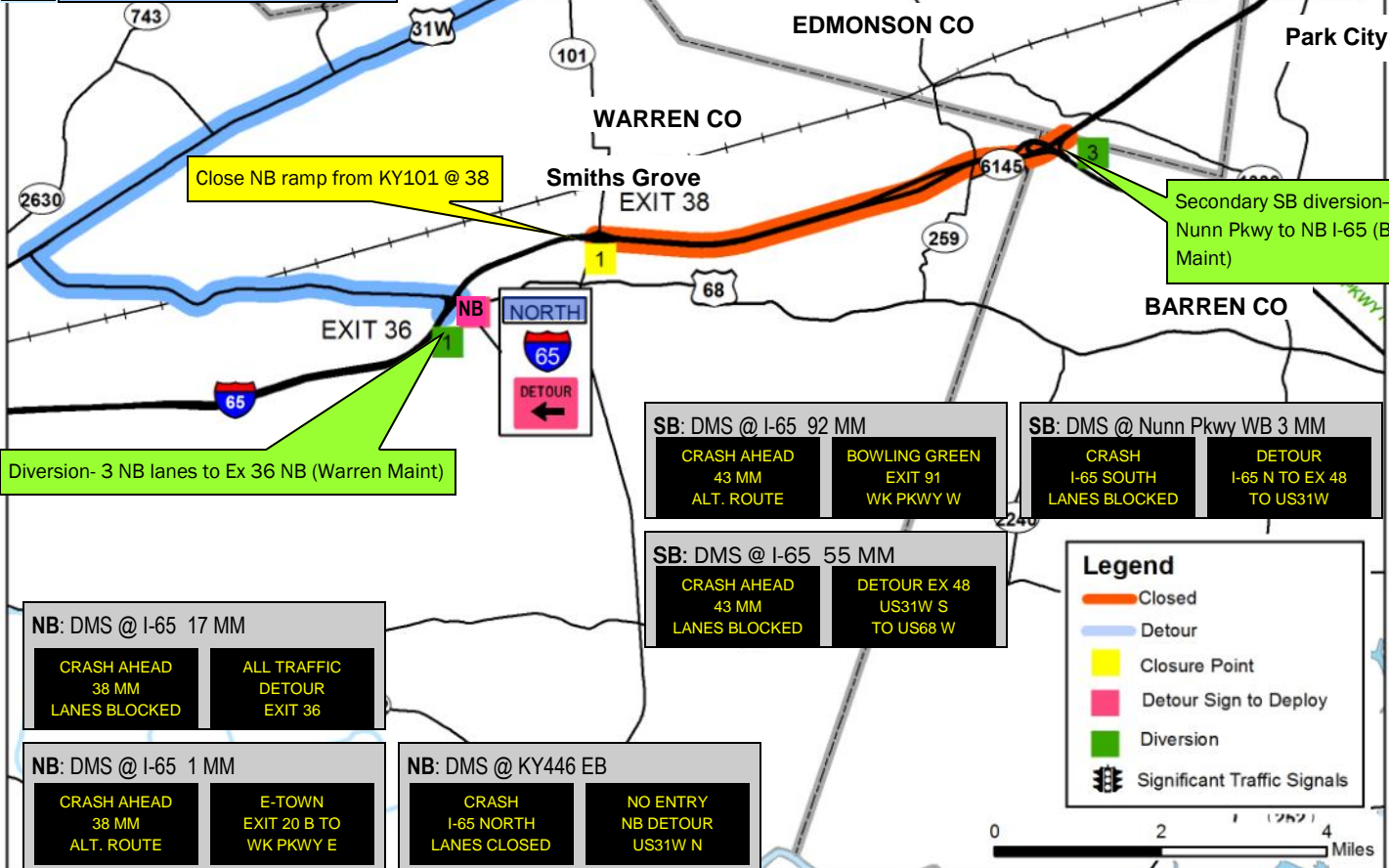


KYTC Incident Contact 24/7:
TOC (502)-564-2080

KSP Post 3 270-782-2010
Local Police (Warren) 270-393-4000
(Barren) 270-651-1175
EMA (Warren) 270-392-1351 / 270-842-1633

NB
↑
>Ex 36 to US68
>Left on US68 W for 5.4 mi
>Right on US31W N for 16.8 mi
>Left on KY255 N
>Return to I-65 NB @ 48 mm

SB
↓
>Ex 48 to KY255
>Left on KY255 S
>Right on US31W S for 16.8 mi
>Left on US68 5.4 mi to I-65 SB @ 36 mm OR
Continue on US31W to KY446/I-65



Close SB ramp from KY255

Primary SB diversion from I65 SB to Exit 48 SB exit (Barren Maint).

Close NB ramp from KY101 @ 38

Secondary SB diversion—WB Nunn Pkwy to NB I-65 (Barren Maint)

Diversion- 3 NB lanes to Ex 36 NB (Warren Maint)

SB: DMS @ I-65 92 MM
CRASH AHEAD 43 MM ALT. ROUTE
BOWLING GREEN EXIT 91 WK PKWY W

SB: DMS @ Nunn Pkwy WB 3 MM
CRASH I-65 SOUTH LANES BLOCKED
DETOUR I-65 N TO EX 48 TO US31W

SB: DMS @ I-65 55 MM
CRASH AHEAD 43 MM LANES BLOCKED
DETOUR EX 48 US31W S TO US68 W

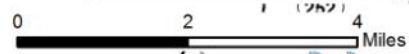
Legend

- Closed
- Detour
- Closure Point
- Detour Sign to Deploy
- Diversion
- Significant Traffic Signals

NB: DMS @ I-65 17 MM
CRASH AHEAD 38 MM LANES BLOCKED
ALL TRAFFIC DETOUR EXIT 36

NB: DMS @ I-65 1 MM
CRASH AHEAD 38 MM ALT. ROUTE
E-TOWN EXIT 20 B TO WK PKWY E

NB: DMS @ KY446 EB
CRASH I-65 NORTH LANES CLOSED
NO ENTRY NB DETOUR US31W N

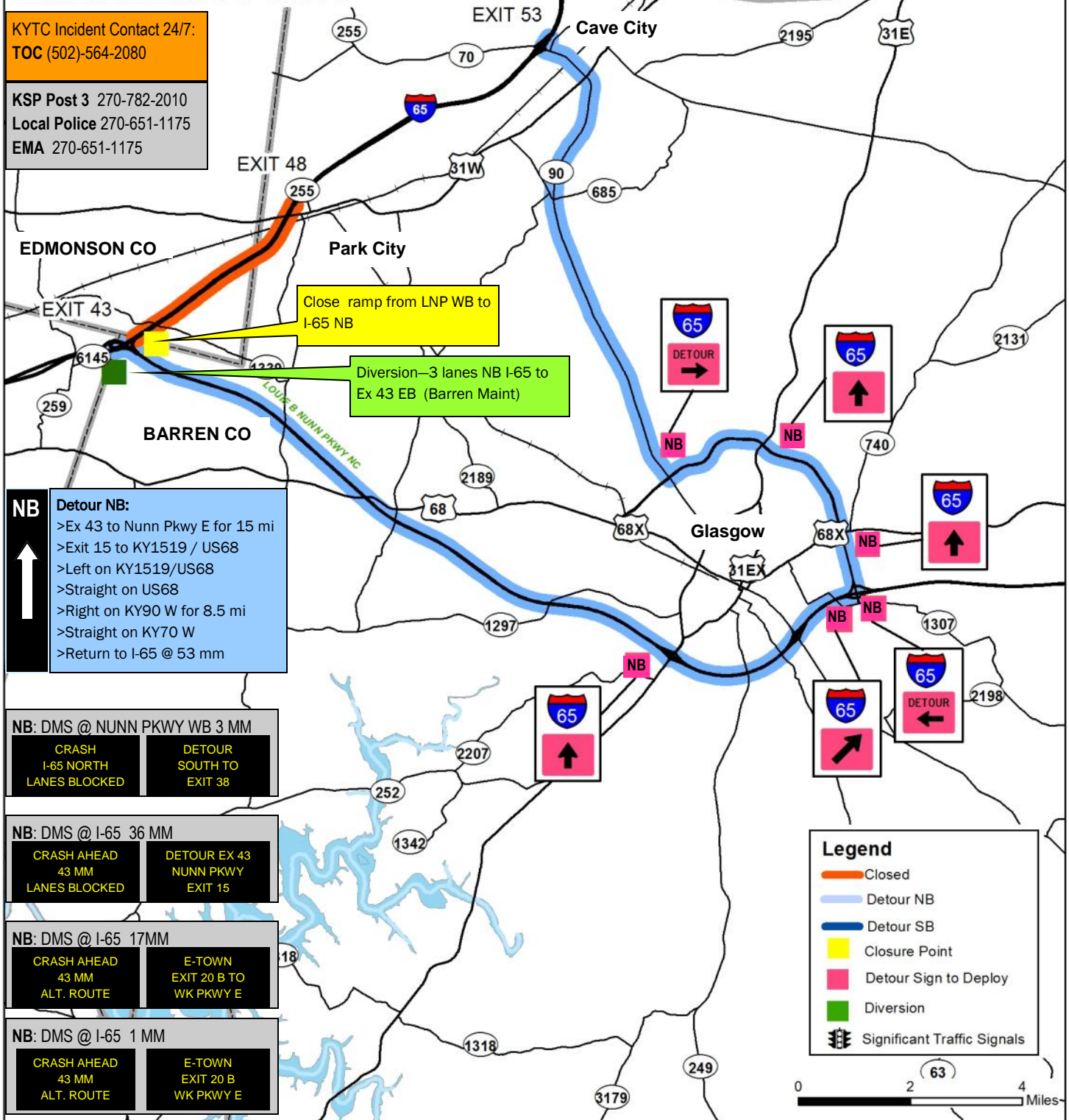


I-65 DETOUR ROUTE EXIT 43 - EXIT 48 NORTH BOUND BARREN COUNTY EDMONSON COUNTY WARREN COUNTY



KYTC Incident Contact 24/7:
TOC (502)-564-2080

KSP Post 3 270-782-2010
Local Police 270-651-1175
EMA 270-651-1175



NB Detour NB:
 >Ex 43 to Nunn Pkwy E for 15 mi
 >Exit 15 to KY1519 / US68
 >Left on KY1519/US68
 >Straight on US68
 >Right on KY90 W for 8.5 mi
 >Straight on KY70 W
 >Return to I-65 @ 53 mm

NB: DMS @ NUNN PKWY WB 3 MM
 CRASH I-65 NORTH LANES BLOCKED
 DETOUR SOUTH TO EXIT 38

NB: DMS @ I-65 36 MM
 CRASH AHEAD 43 MM LANES BLOCKED
 DETOUR EX 43 NUNN PKWY EXIT 15

NB: DMS @ I-65 17MM
 CRASH AHEAD 43 MM ALT. ROUTE
 E-TOWN EXIT 20 B TO WK PKWY E

NB: DMS @ I-65 1 MM
 CRASH AHEAD 43 MM ALT. ROUTE
 E-TOWN EXIT 20 B WK PKWY E

Legend

- Closed
- Detour NB
- Detour SB
- Closure Point
- Detour Sign to Deploy
- Diversion
- Significant Traffic Signals

I-65 DETOUR ROUTE EXIT 43 - EXIT 48 SOUTH BOUND BARREN COUNTY EDMONSON COUNTY WARREN COUNTY



KYTC Incident Contact 24/7:
TOC (502)-564-2080

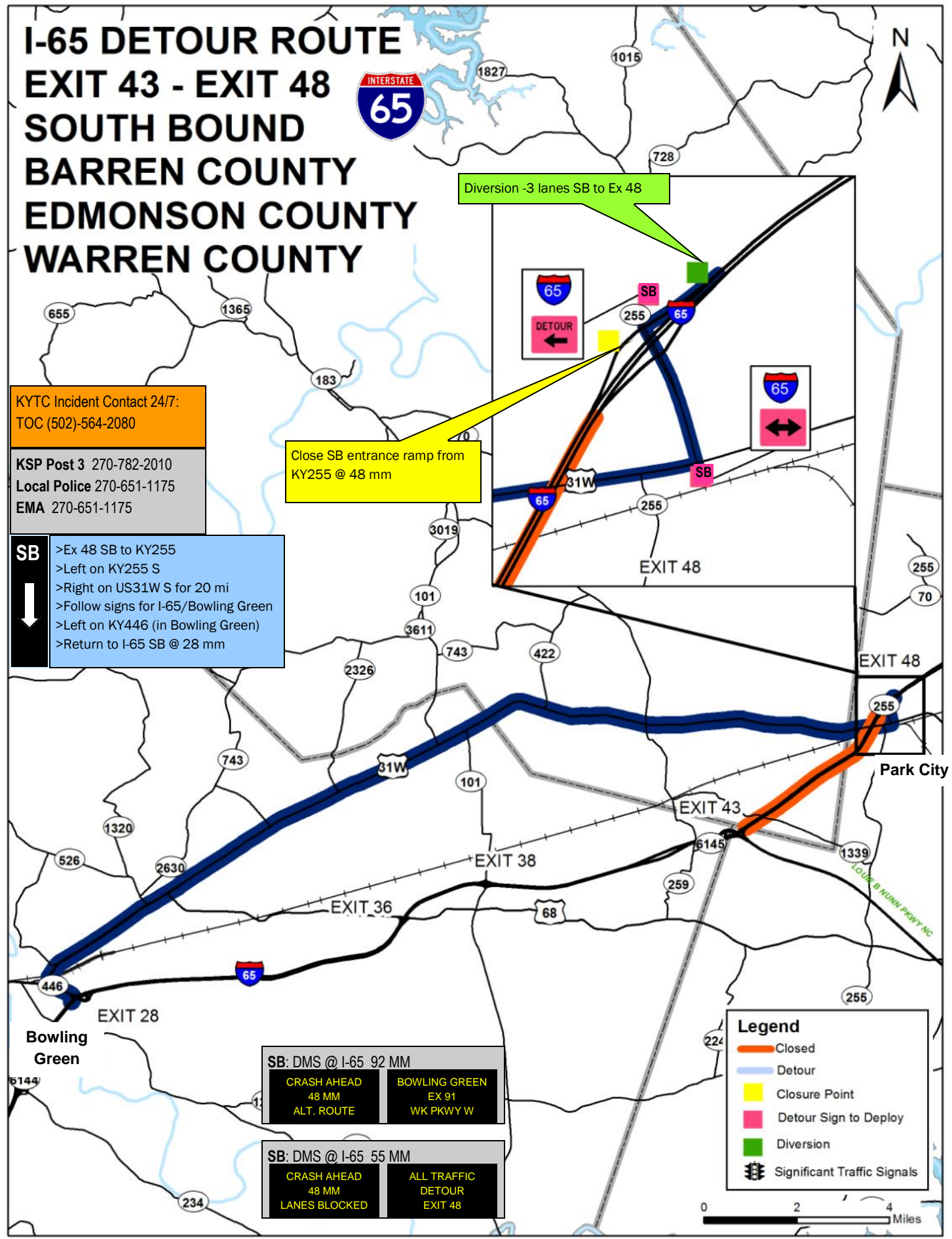
KSP Post 3 270-782-2010
Local Police 270-651-1175
EMA 270-651-1175

SB

- >Ex 48 SB to KY255
- >Left on KY255 S
- >Right on US31W S for 20 mi
- >Follow signs for I-65/Bowling Green
- >Left on KY446 (in Bowling Green)
- >Return to I-65 SB @ 28 mm

Close SB entrance ramp from
KY255 @ 48 mm

Diversion -3 lanes SB to Ex 48



SB: DMS @ I-65 92 MM

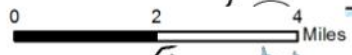
CRASH AHEAD 48 MM ALT. ROUTE	BOWLING GREEN EX 91 WK PKWY W
---	--

SB: DMS @ I-65 55 MM

CRASH AHEAD 48 MM LANES BLOCKED	ALL TRAFFIC DETOUR EXIT 48
--	---

Legend

- Closed
- Detour
- Closure Point
- Detour Sign to Deploy
- Diversion
- Significant Traffic Signals



I-65 DETOUR ROUTE EXIT 48 - EXIT 53 BARREN COUNTY



KYTC Incident Contact 24/7:
TOC (502)-564-2080

KSP Post 3 270-782-2010
Local Police 270-651-1175
EMA 270-651-1175

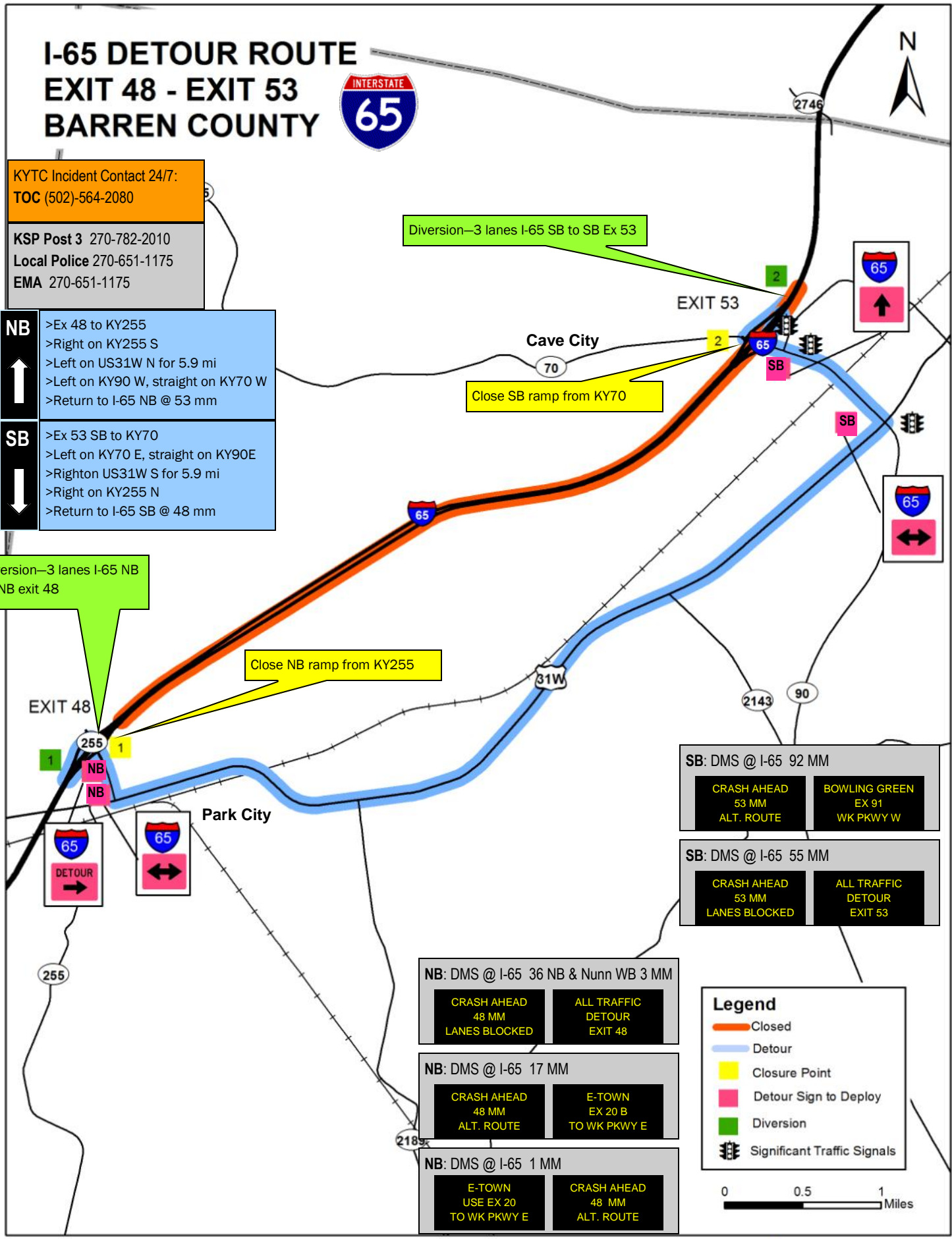
- | | |
|----------------|---|
| NB
↑ | <ul style="list-style-type: none"> >Ex 48 to KY255 >Right on KY255 S >Left on US31W N for 5.9 mi >Left on KY90 W, straight on KY70 W >Return to I-65 NB @ 53 mm |
| SB
↓ | <ul style="list-style-type: none"> >Ex 53 SB to KY70 >Left on KY70 E, straight on KY90E >Right on US31W S for 5.9 mi >Right on KY255 N >Return to I-65 SB @ 48 mm |

Diversion—3 lanes I-65 SB to SB Ex 53

Close SB ramp from KY70

Close NB ramp from KY255

Diversion—3 lanes I-65 NB to NB exit 48



SB: DMS @ I-65 92 MM

CRASH AHEAD 53 MM ALT. ROUTE	BOWLING GREEN EX 91 WK PKWY W
------------------------------------	-------------------------------------

SB: DMS @ I-65 55 MM

CRASH AHEAD 53 MM LANES BLOCKED	ALL TRAFFIC DETOUR EXIT 53
---------------------------------------	----------------------------------

NB: DMS @ I-65 36 NB & Nunn WB 3 MM

CRASH AHEAD 48 MM LANES BLOCKED	ALL TRAFFIC DETOUR EXIT 48
---------------------------------------	----------------------------------

NB: DMS @ I-65 17 MM

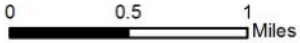
CRASH AHEAD 48 MM ALT. ROUTE	E-TOWN EX 20 B TO WK PKWY E
------------------------------------	-----------------------------------

NB: DMS @ I-65 1 MM

E-TOWN USE EX 20 TO WK PKWY E	CRASH AHEAD 48 MM ALT. ROUTE
-------------------------------------	------------------------------------

Legend

- Closed
- Detour
- Closure Point
- Detour Sign to Deploy
- Diversion
- Significant Traffic Signals



I-65 DETOUR ROUTE EXIT 53 - EXIT 58 BARREN COUNTY HART COUNTY



KYTC Incident Contact 24/7:
TOC (502)-564-2080

KSP Post 3 270-782-2010
Local Police (Barren Co) 270-651-1175
(Hart Co.) 270-782-2010
EMA (Barren Co) 270-651-1175
(Hart Co) 270-524-2832

NB
↑
>Ex 53 to KY70 E
>Right on KY70E
>Straight on KY90 E
>Left on US31W N for 4.7 mi
>Left on KY218 W for 2.3 mi
>Return to I-65 @ 58 mm

SB
↓
>Ex 58 to KY218
>Left on KY218 E for 2.3 mi
>Right on US31W S for 4.7 mi
>Right on KY90 W
>Straight on KY70 W
>Return to I-65 SB @ 53 mm

Close SB ramp from KY218

Diversion - 2 SB lanes to Ex 58 SB (Hart Maint)

SB: DMS @ I-65 92 MM
CRASH AHEAD
58 MM
ALT. ROUTE
BOWLING GREEN
EX 91
WK PKWY W

Close NB ramp from KY70

Diversion- 3 NB lanes to Ex 53 NB (Barren Maint)

NB: DMS @ I-65 1 & 17 MM NB
CRASH AHEAD
53 MM
ALT. ROUTE
E-TOWN
EXIT 20 B TO
WK PKWY E

NB: DMS @ I-65 36 NB & Nunn WB 3 MM
CRASH AHEAD
53 MM
LANES BLOCKED
ALL TRAFFIC
DETOUR
EXIT 53

Legend

- Closed
- Detour
- Closure Point
- Detour Sign to Deploy
- Diversion
- Significant Traffic Signals

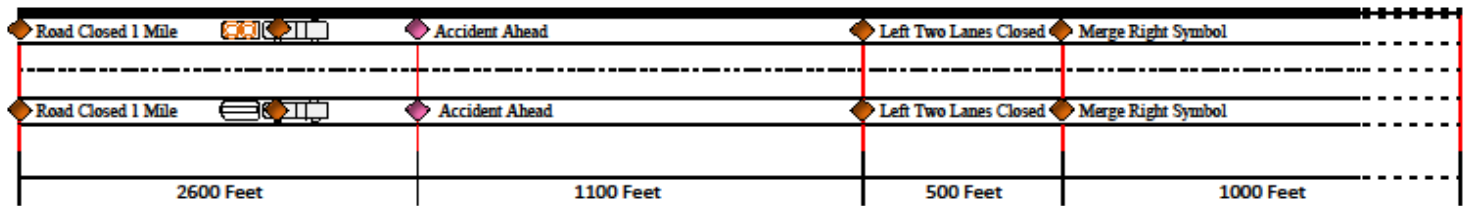


Diversion Setup - 2 Lanes to Exit

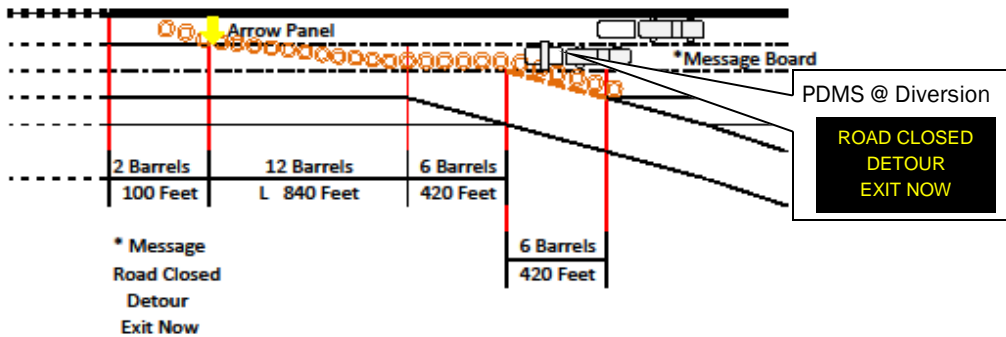
No personnel should be posted on foot within the traveled way of this setup.

Any personnel that are assigned to assist motorists with directions or questions should be posted at the exit end of the ramp. Personnel should make any contact with motorists as brief as possible to maintain flow of traffic off ramps. Detour routes have been signed to minimize need for directions.

Single Lane Closure with Exit Detour



# Signs		Barrel Spacing	
Road Closed 1 Mile	2	Tapers	1 X Speed Limit
Accident Ahead	2	Tangents	2 x Speed limit
Left two lanes Closed	2		"two skips between each barrel"
Merge Right Symbol	2		



Entrance Ramp / Access Closure

Type III barricades with "ROAD CLOSED" sign shall be used to close access and should be placed at the entry end of the ramp.

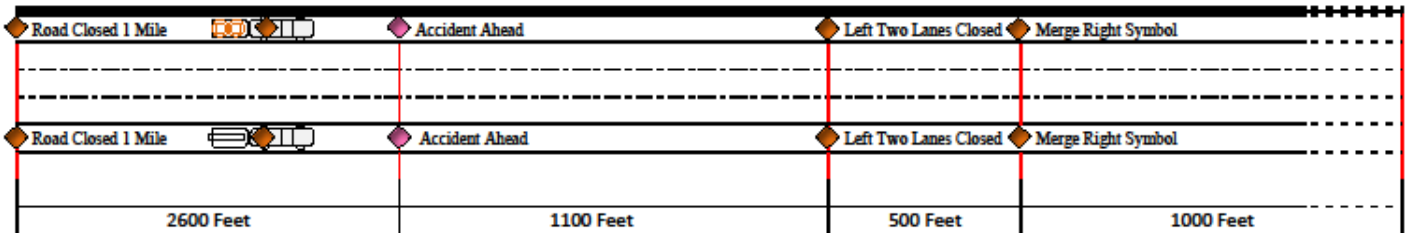
Any dedicated left turn lanes to the ramp should be closed with channelizers and if available a "RAMP CLOSED" sign may be placed in the closed turn lane.

Diversion Setup - 3 Lanes to Exit

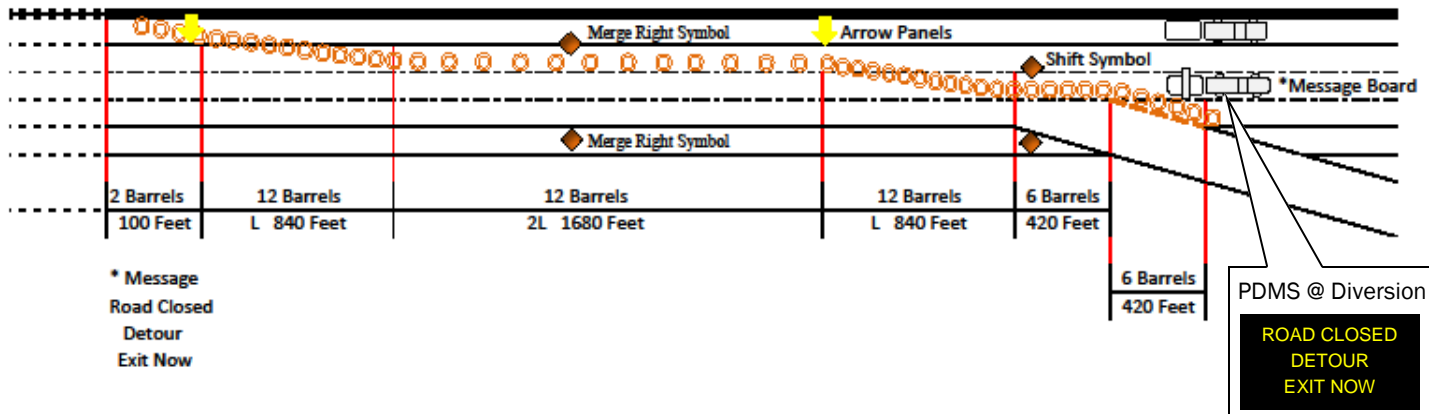
No personnel should be posted on foot within the traveled way of this setup.

Any personnel that are assigned to assist motorists with directions or questions should be posted at the exit end of the ramp. Personnel should make any contact with motorists as brief as possible to maintain flow of traffic off ramps. Detour routes have been signed to minimize need for directions.

Two Lane Closure with Exit Detour



<p># Signs</p> <p>Road Closed 1 Mile 2</p> <p>Accident Ahead 2</p> <p>Left two lanes Closed 2</p> <p>Merge Right Symbol 4</p>	<p>Barrel Spacing</p> <p>Tapers 1 X Speed Limit</p> <p>Tangents 2 x Speed limit "two skips between each barrel"</p>
---	---



* Message
Road Closed
Detour
Exit Now

PDMS @ Diversion

ROAD CLOSED
 DETOUR
 EXIT NOW

Entrance Ramp / Access Closure

Type III barricades with "ROAD CLOSED" sign shall be used to close access and should be placed at the entry end of the ramp.

Any dedicated left turn lanes to the ramp should be closed with channelizers and if available a "RAMP CLOSED" sign may be placed in the closed turn lane.

