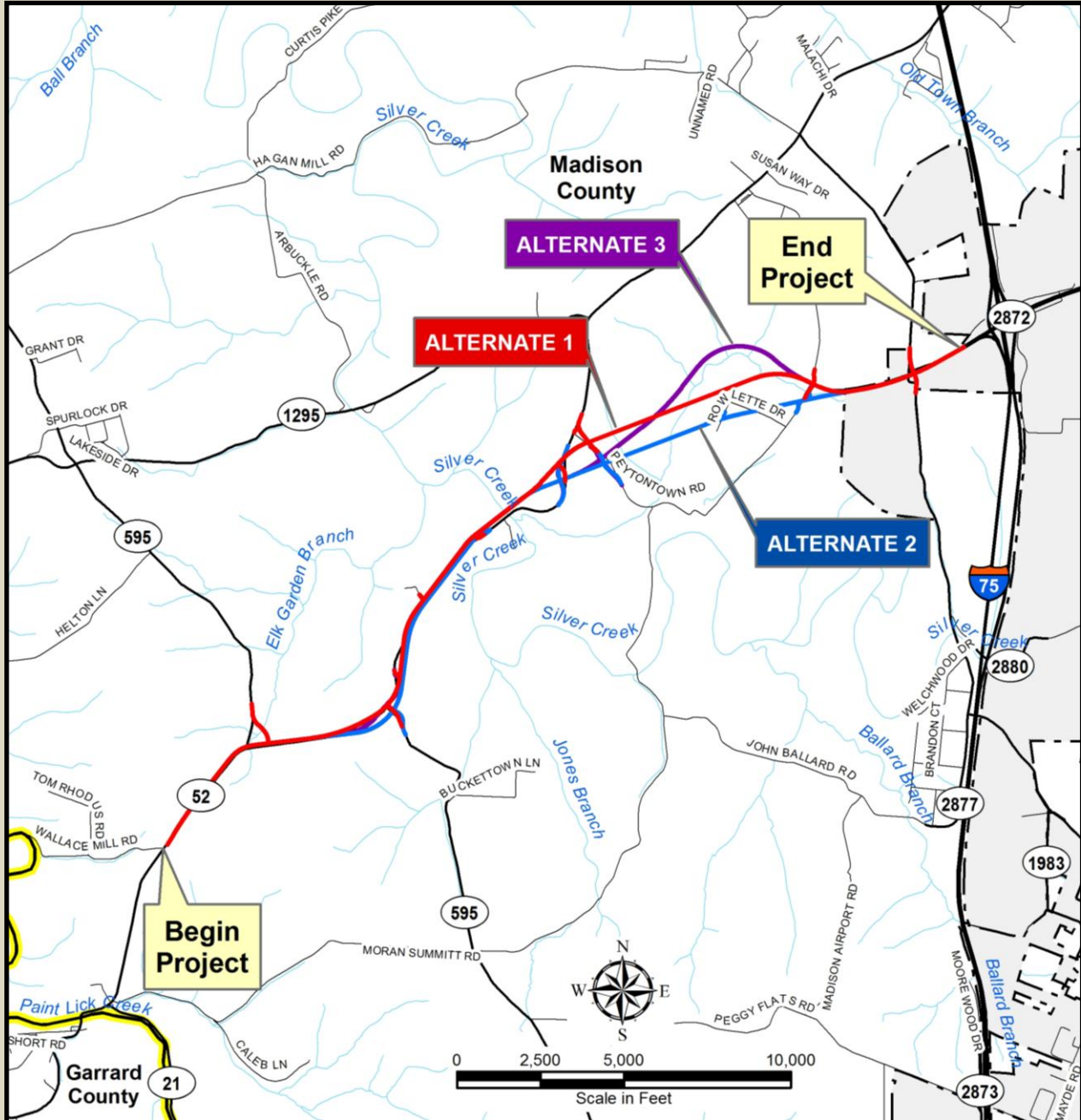


KY 52 RELOCATION



PUBLIC INFORMATION MEETING NO. 2

5:30 PM, Tuesday, May 5, 2015
Kirksville Elementary School
Madison County, Kentucky



Project Information

Project description

The proposed project involves the relocation of KY 52 from Wallace Mill Road to the Duncannon Lane interchange with Interstate 75 in Madison County. A previous Corridor Study established the preferred corridor, and three (3) potential alternates have been developed within this corridor. The purpose of this project is to improve safety, operations, traffic flow, accessibility, the potential for economic development, and connectivity in the transportation system of Madison County. The need is demonstrated by deficient geometry and safety concerns associated with the existing facility.

Meeting purpose and goals

The purpose of this second Public Information Meeting is to present the proposed design alternates, answer questions and seek input from the public. Public input helps the project team make decisions about roadway design and its details.

Estimated Project Schedule

Initial Public Meeting	May 2014
Select Preferred Corridor	August 2014
Submit Preliminary Alternates	January 2015
Second Public Meeting	May 2015
Select Preferred Alternate	Summer 2015

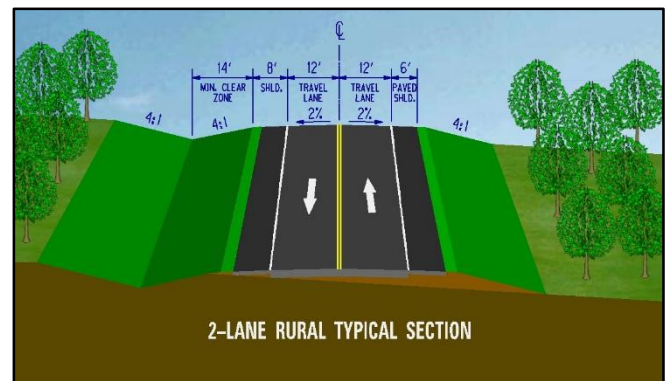
Public Response

An initial public meeting was held to present the potential project corridors and gain insight from the public. Some of the comments included the following:

- *Corridor A is least attractive based on length, property impacts and stream crossings.*
- *Corridor B would affect numerous farms, historic railway tunnels and negatively impact church groups' and scouts' recreational activities.*
- *Corridor C has the least impact to the land and takes the least amount of land (right of way).*
- *Corridor C will straighten out dangerous curve at the present Silver Creek bridge.*
- *Please raise the bridge as its low structure causes flooding in our area.*
- *Costs are about the same for all three corridors.*

Typical Section

KY 52 has a functional classification of *rural arterial* in rolling terrain. Previous traffic from the Scoping Study did not indicate additional lanes were needed and a wider two-lane with improved shoulders is proposed. All horizontal and vertical geometry will meet the criteria for a 55 mph design speed. Travel lanes will be 12-foot wide and the typical section will include an 8-foot shoulder (6-foot paved). Access control for this project will be by permit. The proposed mainline typical section is shown here.



Corridor Selection

A Corridor Selection Meeting was held Thursday, August 14, 2014 at the District Seven office to review the three (3) project corridors presented to the public and to select a corridor for further advancement into preliminary design. After much discussion of the public responses and a thorough evaluation of the corridors, **the Project Team selected Corridor C as the preferred Corridor.** It was agreed to adjust Corridor C to incorporate a portion of Corridor A approaching the interstate to better avoid the identified Environmental Red Flag Area at Rowlette Lane. It was decided that three (3) potential alternates within this corridor would be advanced into preliminary design.

Design process

Alternate development

Alternate No. 1 (red) begins at Wallace Mill Road and parallels the north side of existing KY 52 as it crosses KY 595 while avoiding a church and passing through Happy Landing. The alignment then crosses over to the south side of existing KY 52 as it avoids several

**KY 52 Relocation
Madison County
Item No. 7-235.00**



**Public Information
Meeting No. 2
May 5, 2015**

houses to the north, and then crosses back over to the north side while avoiding two ponds to the south as it approaches Silver Creek. After crossing Silver Creek the alignment breaks away from existing KY 52 and stays to the north of a residential house as it crosses existing KY 52 and Peytontown Road. The alternate then crosses under some existing power transmission lines, crosses Stone Lick Branch, and passes through part of an Environmental Red Flag Area. At this point the alignment curves around toward Peytontown as it avoids a church and crosses Duncannon Lane. The alternate then continues to parallel Duncannon Lane on the south side as it widens to match the existing 4-lane section and ties into Duncannon Lane (KY 2872).

Alternate No. 2 (blue) is the same as Alternate 1 until just before Happy Landing, where it crosses over to the south side of existing KY 52. The alignment stays to the south until just before Silver Creek, where it crosses back over to the north of existing KY 52 and joins up with Alternate 1. After crossing Silver Creek the alignment stays to the south of a residential house as it crosses existing 52 and Peytontown Road. The alternate continues south of Alternate 1 as it crosses Stone Lick Branch, crosses under some power transmission lines, and passes through the heart of a large Environmental Red Flag Area. The alignment then crosses Rowlette Lane and Peytontown Road before joining back up with Alternate 1 and continuing to its terminus at Duncannon Lane (KY 2872).

Alternate No. 3 (purple) is the same as Alternates 1 and 2 until it approaches Happy Landing, where it crosses over existing KY 52 and then back again to stay to the north of the church. The alignment then crosses back over existing KY 52 to join up with Alternate 2 on the south side of the road. From here the alternate avoids several houses to the north and two ponds to the south as it crosses over to the north side of existing KY 52 and joins with Alternate 1 as it approaches Silver Creek. After crossing Silver Creek the alternate stays to the south of a residential house as it crosses existing KY 52 and Peytontown Road. The alignment then heads north as it crosses under the power lines before curving around and staying to the north of Stone Lick Branch while avoiding the Environmental Red Flag Area. The alternate then joins with Alternates 1 and 2 as it continues through Peytontown to its terminus at Duncannon Lane (KY 2872).

Design Summary

A summary of key project design features is presented in the table below. Please note that all quantities and costs shown are approximate.

	Alternate No. 1	Alternate No. 2	Alternate No. 3
Mainline Length*	6.96 miles	7.11 miles	7.37 miles
Parcels Affected	43	38	40
Right of Way Needed	104.7 Acres	117.0 Acres	111.9 Acres
Potential Structures Affected	15	10	7
<i>Residential</i>	8	5	4
<i>Farm</i>	1	2	0
<i>Storage</i>	6	3	3
Earthwork (cubic yards)	488,500	624,300	483,400
Waste material (cubic yards)	20,800	40,700	18,500
Cultural Resources	2	2	1
TOTAL CONSTRUCTION COST	\$21.4 million	\$23.4 million	\$21.6 million

* Includes access roadway lengths.

Meeting Materials

The materials presented at this meeting will be available online at the KYTC District 7 website. This information includes the electronic versions (PDF) of the aerial photo exhibits and this meeting handout.

The website can be accessed under the projects list at:

<http://transportation.ky.gov/District-7>

Next Steps

- Hold Preliminary Line and Grade Inspection Project Team Meeting to consider public feedback, discuss design issues, and select a Preferred Alternate.
- Advance Final Design.

Contact Information

Joshua Samples, PE

Email: Joshua.Samples@ky.gov

Kentucky Department of Highways

District 7

763 West New Circle Road
Lexington, KY 40512

Phone: (859) 246-2355
Fax: (859) 246-2354





Comment Form

1) Please indicate with a check mark the design alternative that you feel provides the best overall solution for the KY 52 Relocation project. Please provide any comments as to why you prefer this alternate.

- Alternate 1 (red)**
- Alternate 2 (blue)**
- Alternate 3 (purple)**
- No-Build**

Comments: _____

2) Please describe any changes you would suggest to improve your preferred Alternate.

3) Please provide any information that could affect the location and design of the proposed roadway such as land features, utility locations, environmentally sensitive areas, cemetery locations, etc.

Please provide your name and address for our records:

NAME: _____
ADDRESS: _____

Please return completed Comment Form by May 19th to:
Joshua Samples
Kentucky Department of Highways
District 7
763 West New Circle Road
Lexington, KY 40512

Commonwealth of Kentucky
DEPARTMENT OF HIGHWAYS

KY 52 RELOCATION
MADISON COUNTY

Item No. 7-235.00



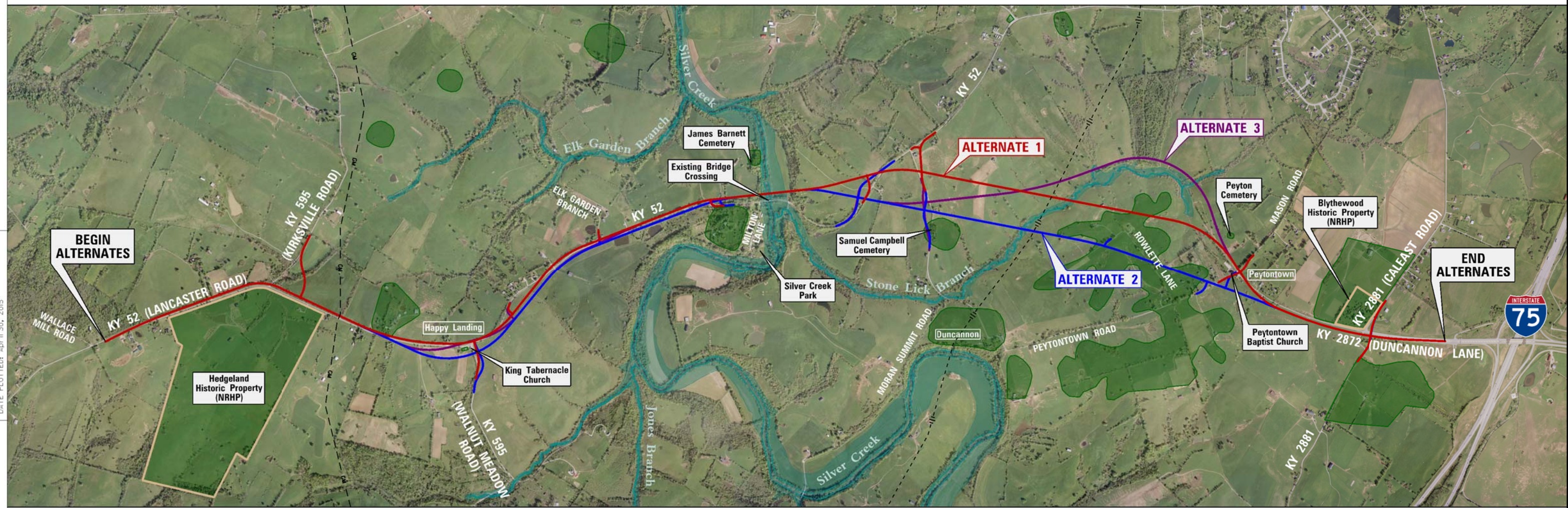
LEGEND

- ALTERNATE NO. 1 —
- ALTERNATE NO. 2 —
- ALTERNATE NO. 3 —
- GAS DISTRIBUTION LINE - - - GM
- EKPC-POWER TRANSMISSION LINES - - - - -
- ENVIRONMENTAL RED FLAG AREA
- NRHP SITE BOUNDARY
- FEMA 100 YEAR FLOODPLAIN



ALTERNATES 1, 2 & 3

PRELIMINARY - SUBJECT TO CHANGE



USER: eflister DATE PLOTTED: April 30, 2015
 FILE NAME: T:\4167-KY 52 MADISON PHASE 1\DOCUMENTS\MEETINGS\2015_05-05 PUBLIC INFORMATION MEETING\ALTERNATE LOCATION MAP.DGN
 E-SHEET NAME: MicroStation v8.11.7.443



SCALE: 1"=2000'

EXHIBIT 1
ALTERNATE LOCATION MAP
KY 52 RELOCATION