

## Purpose of This Meeting

The purpose of tonight's meeting is to:

- Give an overview of project developments to date and share upcoming activities.
- Gather public input on "Preferred Alternates" for KY 36, Pickshein Road, and KY 965 (Preston Road).
- Provide the public an opportunity to comment and ask questions about the project.

## Project Overview

In 2022, the Kentucky Transportation Cabinet (KYTC) District 9 completed a Planning Study for KY 36. The Planning Study identified the following Purpose & Need:

The purpose of this project is to address the current deficiencies, improve safety, and promote access and connectivity for this region of Bath County. This project currently has 44 locations that have substandard geometrics.

## Project Overview

Major milestones for the project include:

**Public Meeting - August 2023**

**Complete Preliminary Design - End of 2023**

**Right of Way & Utility Plans - July 2024**

**Final Plan - February 2025**

## Project Contact

**Blake Jones, PE**  
**Project Manager**

Call: (800) 817-2551

Email: [blake.jones@ky.gov](mailto:blake.jones@ky.gov)

Kentucky Department of Highways

Highway District 9 Office

822 Elizaville Avenue

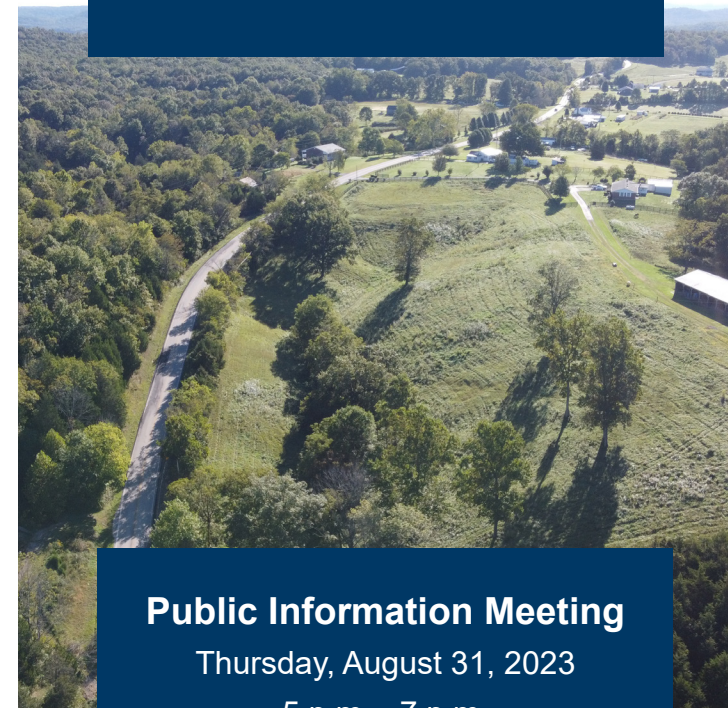
Flemingsburg, KY 41041



# KY 36

**KYTC Item No. 9-80101.00**  
**Bath County, Kentucky**

Proposed improvements to KY 36  
between the I-64 interchange and  
Hart Pike (KY 965)



## Public Information Meeting

Thursday, August 31, 2023

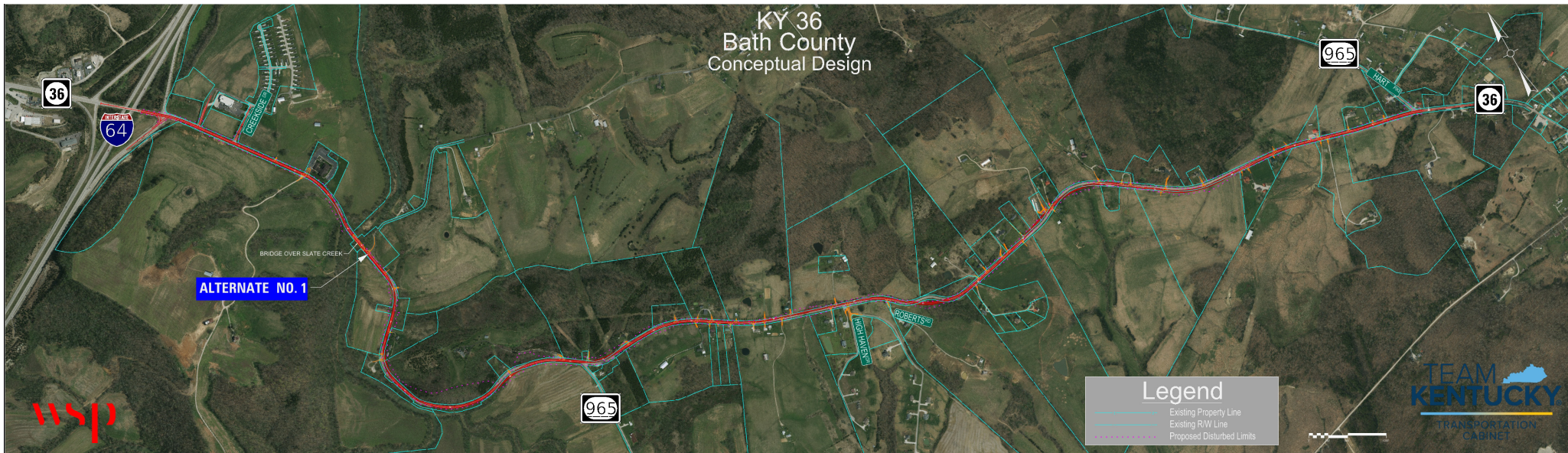
5 p.m. - 7 p.m.

*Drop in; Project Overview at 5:30*

Bath County Courthouse Annex

19 E Main Street

Owingsville, KY 40360



KY 36 Alternate 1

**Alternates**

Alternates have been developed for KY 36, Pickshein Road, and KY 965 (Preston Road). In addition to a No-Build alternate, the following alternates are being considered.

**KY 36**

- **Alternate 1:** This alternate improve geometric alignment of KY 36 to increase the design speed while following the same general alignment. This includes widening the existing travel lanes to 11' and adding a 2' paved shoulder.

**PICKSHEIN ROAD**

- **Alternate 1:** This alternate maintains the existing alignment of Pickshein Road but improves the vertical approach to KY 36. This will make the approach to KY 36 more level and make turning movement easier.

- **Alternate 2:** This alternate realigns Pickshein Road to be farther away from the bridge over Slate Creek. This improves the sight distance when turning onto KY 36.

**KY 965 (PRESTON ROAD)**

- **Alternate 1:** This alternate realigns KY 965 to the West. This improves sight distance by pulling the intersection with KY 36 away from the KY 36 Curve and steep grade.
- **Alternate 2:** This alternate realigns KY 965 to the East. The intersection sight distance is approved. This alternate requires a steeper grade on KY 965 to tie into the proposed KY 36.
- **Alternate 3:** This alternate maintains the existing alignment of KY 965. Sight distance is improved due to improved KY 36. This alignment requires a steep grade on KY 965.

Details for the alternates are on display boards around the room. We encourage everyone to view the options, ask questions, and provide comments on the questionnaire.

**Thank you for attending!**

**SUBMIT YOUR COMMENTS:**

Fill out the survey online at <https://forms.office.com/e/qj3G8eHwWb>



Paper surveys are also available at the registration desk.