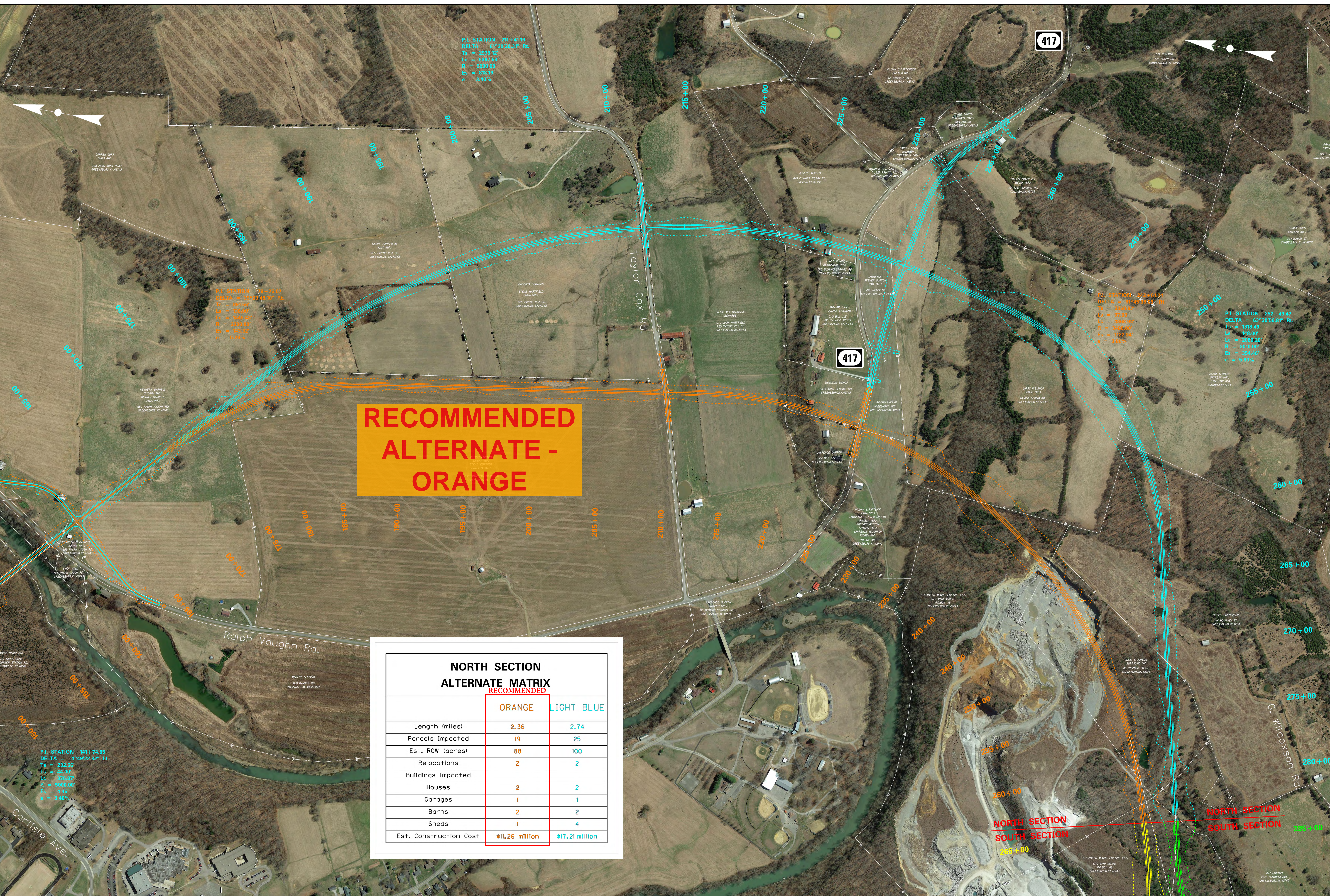


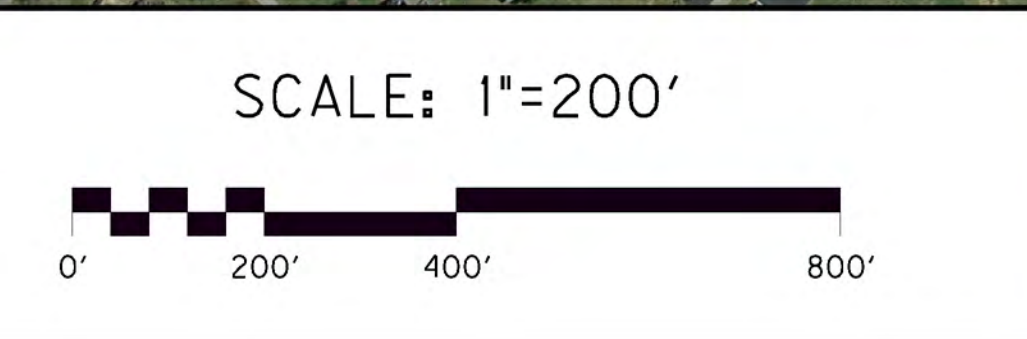


**GREEN COUNTY, KENTUCKY  
GREENSBURG CONNECTOR  
ITEM NO. 4-398.00 - NORTH SECTION**



**RECOMMENDED  
ALTERNATE -  
ORANGE**

NORTH SECTION ALTERNATE MATRIX RECOMMENDED		
	ORANGE	LIGHT BLUE
Length (miles)	2.36	2.74
Parcels Impacted	19	25
Est. ROW (acres)	88	100
Relocations	2	2
Buildings Impacted		
Houses	2	2
Garages	1	1
Barns	2	2
Sheds	1	4
Est. Construction Cost	\$11.26 million	\$17.21 million



P.I. STATION 141+74.65  
DELTA = 4°49'22.32" Lt.  
Ts = 232.66'  
Lc = 184.00'  
Lc = 878.87'  
R = 5000.00'  
Es = 0.45'  
e = 3.40%

P.I. STATION 211+41.19  
DELTA = 61°30'36.31" Rt.  
Ts = 2575.12'  
Lc = 9307.53'  
R = 5000.00'  
Es = 818.19'  
e = 3.40%

P.I. STATION 222+01.24  
DELTA = 63°30'56.81" Rt.  
Ts = 2000.00'  
Lc = 1000.00'  
Lc = 3440.00'  
R = 2000.00'  
Es = 1222.00'  
e = 3.40%

P.I. STATION 282+49.47  
DELTA = 63°30'56.81" Rt.  
Ts = 1318.48'  
Lc = 148.00'  
Lc = 2080.20'  
R = 2010.00'  
Es = 304.46'  
e = 5.80%

NORTH SECTION  
SOUTH SECTION