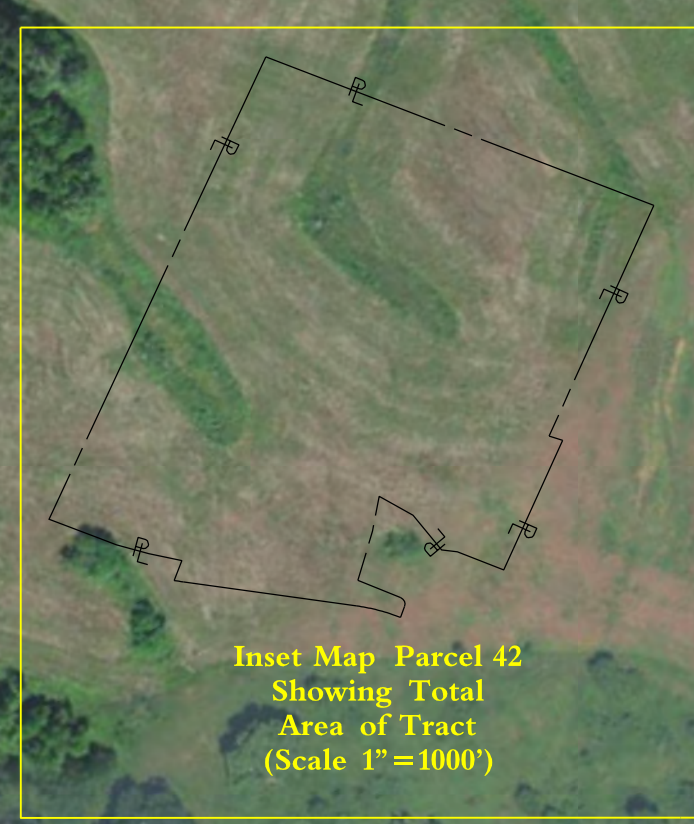
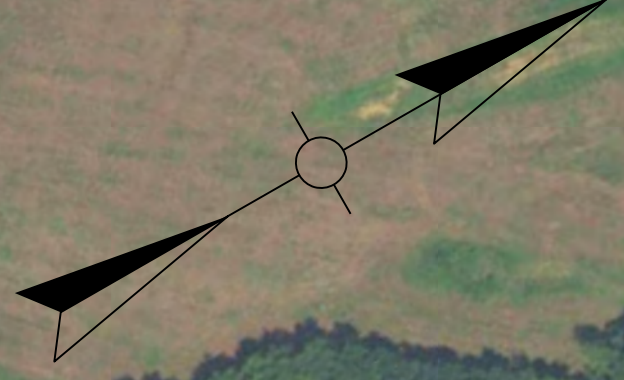
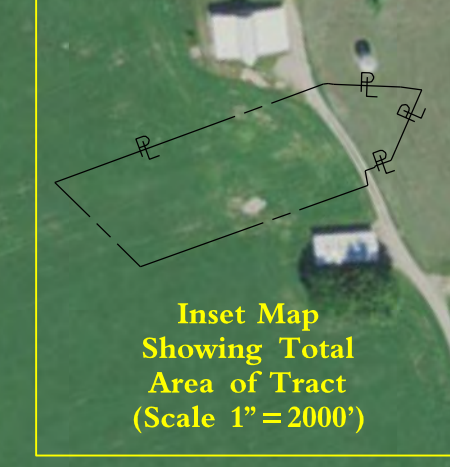
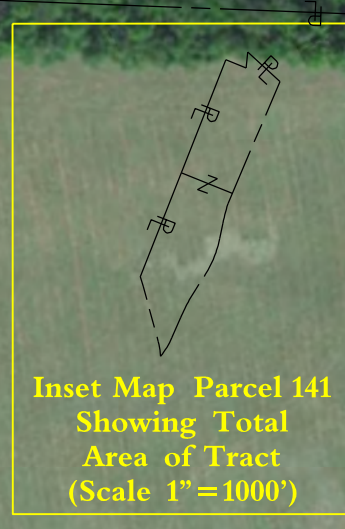


REVISED PLANS DATE: OCTOBER 15, 2021



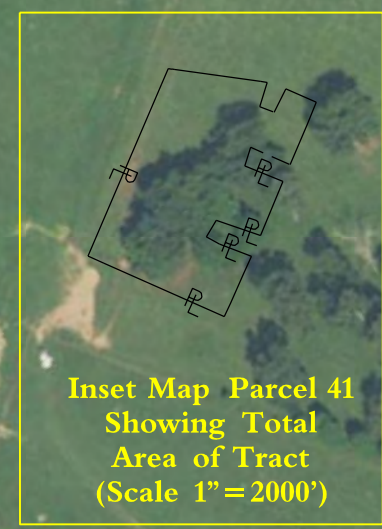
P 18 Not Used
 P 141 Harlan Forrest Berry Virginia Sharon Berry (wife) DB. 600 Pg. 348
 P 143 Morgan Mace DB. 648 Pg. 120
 P 144 Pam Ramp (wife) Dan Ramp (husband) DB. 523 Pg. 495
 P 145 to P 152 Not Used
 P 12 Not Used
 P 141 Jerry M. Miles Shirley R. Miles (wife) DB. 153 Pg. 48
 P 143 John L. Ditto Lawanna Ditto (wife) DB. 175 Pg. 209 DB. 509 Pg. 415 (Water Line Esmt.)
 P 144 Stone Holdings, LLC DB. 536 Pg. 134 DB. 509 Pg. 412 (Water Line Esmt.)
 P 145 Harold D. Carter Sandra L. Carter (wife) DB. 414 Pg. 146 DB. 509 Pg. 418 (Water Line Esmt.)
 P 16 Jodie Babb Lisa Babb (wife) DB. 629 Pg. 479 DB. 509 Pg. 421 (Water Line Esmt.)
 P 16 C.E. Smith & Sons Corporation DB. 324 Pg. 63 DB. 523 Pg. 495 Sell-off (P144) DB. 520 Pg. 276 Sell-off (P143) PB. 4 Pg. 85 DB. 509 Pg. 404 (Water Line Esmt.)

P 19 Donny Blankenship (husband) Teresa Blankenship (wife) DB. 537 Pg. 441
 P 21 Betty S. Hardesty James H. Hardesty (husband) DB. 324 Pg. 227 PB. 4 Pg. 85 DB. 509 Pg. 413 (Water Line Esmt.)
 P 24 P 25 P 26 P 27 Not Used
 P 29 P 30 Not Used
 P 31 Charles E. Whelan (unmarried) DB. 324 Pg. 1 PB. 4 Pg. 85
 P 34 Not Used
 P 36 Joseph E. Cook Marlene Cook (wife) DB. 90 Pg. 43
 P 38 Paul Thomas Latta Melody S. Latta (wife) DB. 412 Pg. 326
 P 40 Jodie D. Babb (husband) Lisa K. Babb (wife) DB. 548 Pg. 543
 P 43 Not Used
 P 46 John Turpin Cathy Turpin (wife) DB. 571 Pg. 10
 P 47 Robert E. Wilkins Theresa S. Wilkins (wife) DB. 238 Pg. 33 DB. 287 Pg. 271 DB. 423 Pg. 61
 P 48 James E. Doyle (husband) Angela Doyle (wife) DB. 675 Pg. 486
 P 49 Not Used
 P 155 Lucas Burchett (husband) Jessica Burchett (wife) DB. 711 Pg. 412 PC. 8 Sheet 46 DB. 509 Pg. 400 (Water Line Esmt.)



P 144 Jerry Miles Shirley Miles (wife) DB. 100 Pg. 43 DB. 109 Pg. 155 DB. 509 Pg. 406 (Water Line Esmt.)
 P 145 James Michael Diehl DB. 338 Pg. 177

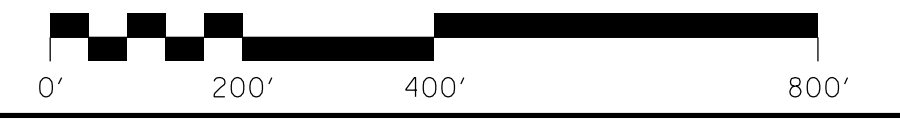
P 28 Gary L. Hartlage Sarah Hartlage (wife) DB. 495 Pg. 159 DB. 506 Pg. 213 PB. 6 Pg. 166 DB. 711 Pg. 412 (Sell-off P155) DB. 509 Pg. 400 (Water Line Esmt.)
 P 142 James H. Hardesty Betty Hardesty (wife) DB. 110 Pg. 505
 P 42 Charles E. Whelan (single) DB. 624 Pg. 434 DB. 682 Pg. 159
 P 46 Melinda Hipp DB. 699 Pg. 51
 P 47 Robert Earl Wilkins Theresa Compton Wilkins (wife) DB. 287 Pg. 271
 P 48 Robert E. Wilkins Theresa S. Wilkins (wife) DB. 238 Pg. 33
 P 21 Lucille Skelton Estate Subdivision (PB. 4 Pg. 85) (PB. 6 Pg. 166)
 Revised Plat of Lucille Skelton Estate Plat Cabinet 6 Pg. 166 to Establish Lots 3-A, 4-A, 5-A Plat Cabinet 8 Pg. 46
 P 21 J & M Farm Living Trust DB. 595 Pg. 384 DB. 509 Pg. 403 (Water Line Esmt.)
 P 31 Steve W. Wilson Danetta Rose Collins (wife) DB. 174 Pg. 267 DB. 509 Pg. 407 (Water Line Esmt.)
 P 32 David T. Wilson Joan P. Wilson (wife) DB. 429 Pg. 309 DB. 442 Pg. 533 (Sell-off) DB. 580 Pg. 397 (Sell-off) DB. 509 Pg. 408 (Water Line Esmt.)
 P 41 William R. Beville DB. 603 Pg. 519
 P 22 John S. Beville DB. 197 Pg. 189
 P 23 Glarybound Christian Center Church of God DB. 599 Pg. 101
 Ex. 30' Ingress-Egress Easement



Parcel 3 Craig Medley Angela R. Medley (wife) DB. 606 Pg. 288
 Raymond Earl Brown Subdivision Plat Cabinet 7, Slide 24
 Parcel 4
 Parcel 5
 Parcel 6
 Parcel 7
 A Kyle King (married) DB. 596 Pg. 417 DB. 597 Pg. 409 MB. 724 Pg. 424
 B James D. Brown Edna L. Brown (wife) DB. 429 Pg. 626 Water Well Agreement (Misc. Bk. 7, Pg. 697)
 C David H. Still Janet F. Still (wife) DB. 515 Pg. 142
 D Larry Hardesty & Jane Hardesty (husband and wife) (1/2 Interest) Gerald Louis Mattingly (single) (1/2 Interest) DB. 429 Pg. 330 DB. 433 Pg. 75 Water Well Agreement (Misc. Bk. 7, Pg. 697)
 E Samantha Hickerson Nathan Hickerson (husband) DB. 563 Pg. 586
 F
 G LC4 Petro, LLC DB. 686 Pg. 161
 H
 I
 J David B. Dalley Jonell M. Dalley (wife) DB. 471 Pg. 96
 K
 L
 M
 N
 O

P 17 C.E. Smith & Sons Corporation DB. 256 Pg. 88 DB. 581 Pg. 569 Sell-off (P20)
 P 20 Axis Investments, LLC DB. 659 Pg. 34
 P 22 William R. Beville Angella Y. Beville (wife) DB. 616 Pg. 207 MISC. Bk. 7, Pg. 646 (Well Agreement)
 P 32 William F. Sego (husband) Patti E. Sego (wife) DB. 570 Pg. 263 DB. 509 Pg. 414 (Water Line Esmt.)
 P 33 Kellie L. Coker III Jimmie D. Coker III (husband) DB. 606 Pg. 1 DB. 509 Pg. 407 (Water Line Esmt.)
 P 35 David G. Livers Virginia Livers (wife) DB. 464 Pg. 550 DB. 509 Pg. 417 (Water Line Esmt.)
 P 39 Doris Silvers (widow) DB. 120 Pg. 375 WB. X Pg. 482 DB. 509 Pg. 395 (Water Line Esmt.)
 P 44 John Albert Haynes (single) DB. 560 Pg. 139 DB. 580 Pg. 397 DB. 509 Pg. 419 (Water Line Esmt.)
 P 45 Not Used
 L Mark Smith DB. 595 Pg. 435
 M Joseph Mark Ray (unmarried) DB. 618 Pg. 484
 N Clyde W. Miller Lucille Miller (wife) DB. 101 Pg. 122
 O Joseph Mark Ray Kenneth Stephen Ray W.B. X Pg. 457 W.B. U. Pg. 674 W.B. U. Pg. 648 DB. 145 Pg. 20 DB. 429 Pg. 330 (Sell-off P5)

RIGHT OF WAY PLANS



KY 79
 RIGHT-OF-WAY STRIP MAP
 SHEET 1 OF 4

SCALE: 1"=200'

BURGESS & NIPLE

FILE NAME: P:\NRS2302\CADD\ROADWAY PLANS\R05200RW - COPY.DGN

USER: herrick DATE PLOTTED: June 23, 2022

E-SHEET NAME:

MicroStation v8.11.9.919

COUNTY OF	ITEM NO.	SHEET NO.
MEADE	4-8705.00	R53

REVISED PLANS DATE: OCTOBER 15, 2021

BURGESS & NIPLÉ

FILE NAME: P:\PR52302\CADD\ROADWAY PLANS\R05300RW - COPY.DGN
 USER: herrick
 DATE PLOTTED: June 23, 2022
 E-SHEET NAME:
 MicroStation v8.11.9.919

(P 49) Not Used (P 52) William M. Smith, Mildred Catherine Smith (wife) DB. 102 Pg. 68

(P 56) Richard C. Myers, Elizabeth A. Myers (wife) DB. 157 Pg. 12, DB. 242 Pg. 234, DB. 63 Pg. 106 (Ex. KY 144 R/W) (P 58) Not Used

(P 51) Edward Wayne Johnston (husband), Alice Faye Johnston (wife) DB. 194 Pg. 280

Inset Map Parcel 53 Showing Total Area of Tract (Scale 1"=2000')

Inset Map Parcel 59 Showing Total Area of Tract (Scale 1"=2000')

(P 53) Corey Kormick WB 0 Pg. 72, DB. 92 Pg. III (Affidavit of Descent), DB. 92 Pg. III (Deed with Boundary Description), DB. 63 Pg. III (KY 144 (Payneville Rd. Existing R/W))

(P 59) Basham Farms, LLC DB. 636 Pg. 289, DB. 63 Pg. 106 (Ex. KY 144 R/W)

(P 54) Jerome Dale Basham (unmarried) DB. 651 Pg. 51

(P 66) William O. Mack, Mattie Mae Mack (wife) DB. 101 Pg. 34, DB. 651 Pg. 51 (Self-off (P154))

(P 48) Temp. Esmt., Prop. R/W

(P 52) Temp. Esmt., T.E.

Perm. Drainage Esmt., T.E.

(P 56) Perm. Drainage Esmt., T.E.

Temp. Esmt. for Dewatering, Perm. Drainage Esmt., T.E.

30+00

560+00

570+00

580+00

31+78

35+00

590+00

600+00

610+00

35+00

(P 50) Edward Lawrence Hardesty, Alice Jane Hardesty (wife) DB. 174 Pg. 135, DB. 378 Pg. 36 (Oil & Gas Lease)

(P 54) Larry Hardesty, Jane Hardesty (wife) DB. 135 Pg. 14, DB. 384 Pg. 54, DB. 509 Pg. 394 (Water Line Esmt.)

(P 54) Tract 1

(P 61) Lot 4, (P 60) Lot 3, (P 62) Lot 2, (P 63) Lot 1, Ritchland Heights (DB. 96 Pg. 219)

55+00

57+88

(P 62) Elizabeth Ritchie Wheatley W.B.U. Pg. 495, DB. 596 Pg. 620, DB. 174 Pg. 166 (C.R. 3206, Ex. R/W), DB. 509 Pg. 411 (Water Line Esmt.)

(P 64) Shirley Ritchie Miles, Jerry M. Miles (husband) DB. 566 Pg. 194, DB. 509 Pg. 405 (Water Line Esmt.)

Donna Lynn Harjo (1/3 Interest), Scott Loujs Harjo (1/3 Interest), Dana Harjo Moore (1/3 Interest) DB. 570 Pg. 158

Inset Map Parcel 50 Showing Total Area of Tract (Scale 1"=2000')

Inset Map Parcel 54 Showing Total Area of Tract (Scale 1"=2000')

(P 55) Not Used

(P 60) Micheal S. Ballard (unmarried) DB. 512 Pg. 282, DB. 509 Pg. 402 (Water Line Esmt.)

(P 63) Elizabeth Ann Smith (single) DB. 140 Pg. 460, DB. 509 Pg. 411 (Water Line Esmt.)

(P 64) Kimberly S. Myers (unmarried) DB. 614 Pg. 66, DB. 509 Pg. 396 (Water Line Esmt.), DB. 509 Pg. 405 (Water Line Esmt.)

(P 57) Rebecca Mattie Thompson Greer (single) DB. 543 Pg. 127, DB. 509 Pg. 397 (Water Line Esmt.)

(P 61) Jack A. King, Linda M. King (wife) DB. 95 Pg. 233, DB. 576 Pg. 134, DB. 509 Pg. 401 (Water Line Esmt.)

(P 65) Not Used

RIGHT OF WAY PLANS

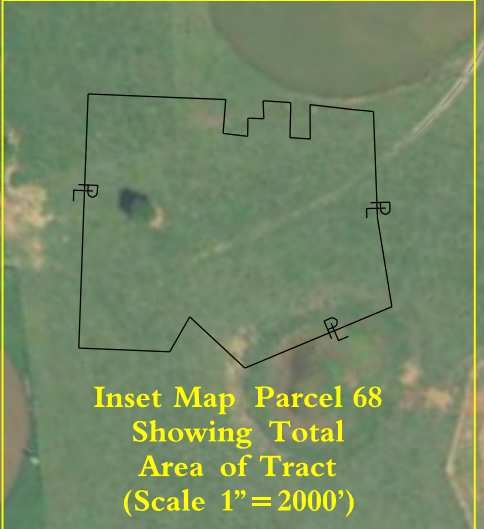
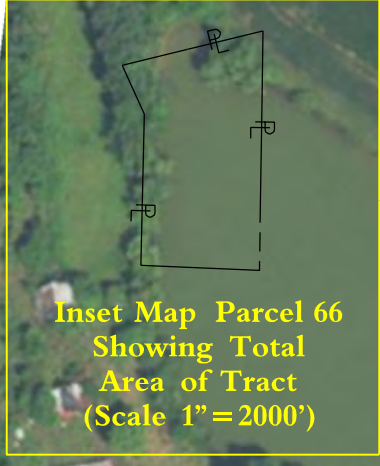
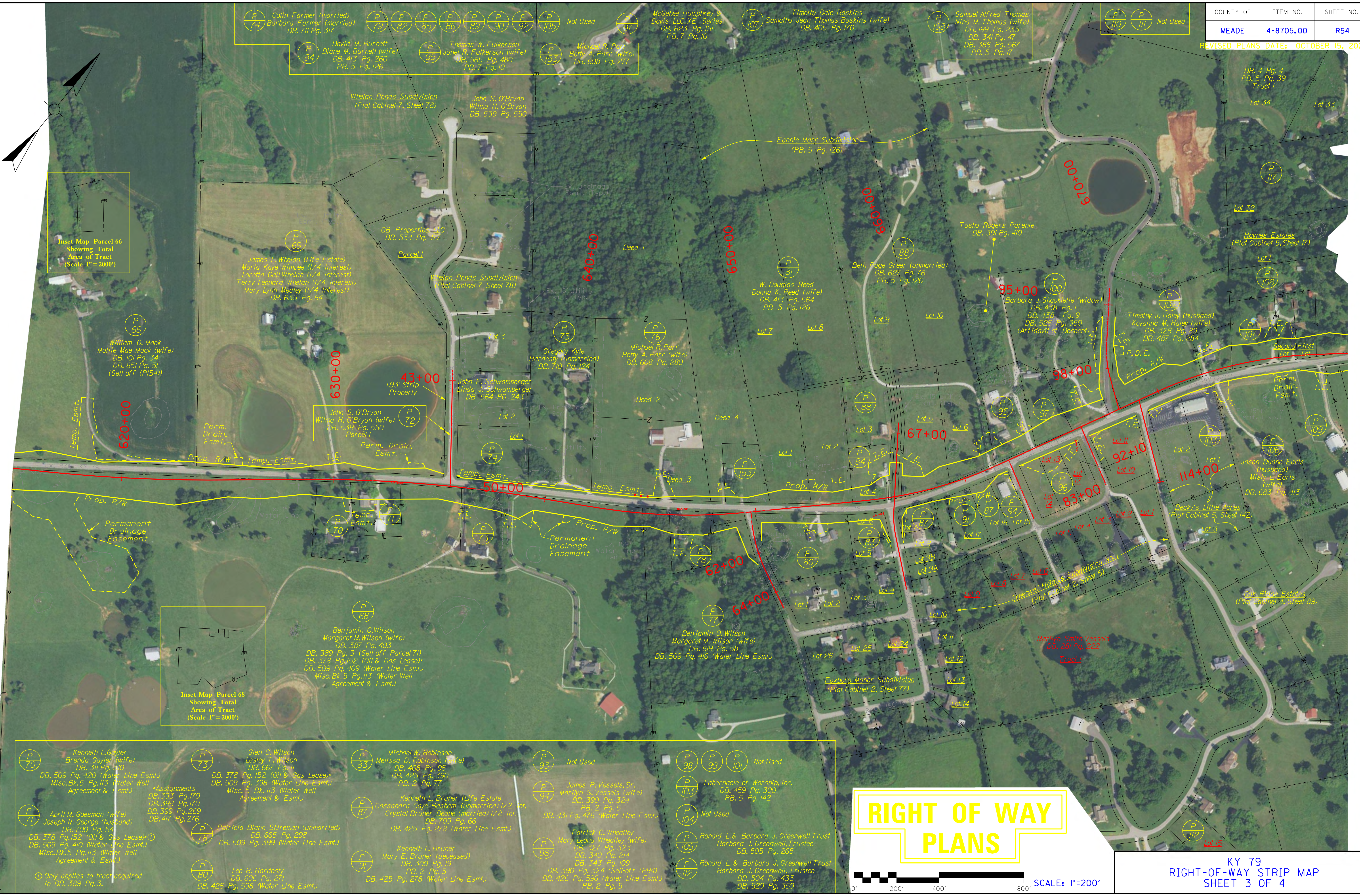


KY 79
 RIGHT-OF-WAY STRIP MAP
 SHEET 2 OF 4

REVISED PLANS DATE: OCTOBER 15, 2021

BURGESS & NIPLÉ

FILE NAME: P:\NRS2302\CADD\ROADWAY PLANS\N05400RW - COPY.DGN
 USER: herrick
 DATE PLOTTED: June 23, 2022
 E-SHEET NAME:
 MicroStation v8.11.9.919



RIGHT OF WAY PLANS

0' 200' 400' 800'

SCALE: 1"=200'

Parcel 66 Owners:
 P 74 Collin Farmer (married) Barbara Farmer (married) DB. 711 Pg. 317
 P 79 David M. Burnett Diane M. Burnett (wife) DB. 413 Pg. 260 PB. 5 Pg. 126
 P 82 P 85 P 86 P 89 P 90 P 92 Not Used
 P 84 Thomas W. Fulkerson Janet H. Fulkerson (wife) DB. 565 Pg. 480 PB. 7 Pg. 10
 P 105 Not Used
 P 67 McGehee Humphrey & Davis LLC, XE Series DB. 623 Pg. 151 PB. 7 Pg. 10
 P 107 Timothy Dale Baskins Samatha Jean Thomas-Baskins (wife) DB. 405 Pg. 170
 P 108 Samuel Alfred Thomas Nina M. Thomas (wife) DB. 199 Pg. 235 DB. 341 Pg. 47 DB. 386 Pg. 567 PB. 5 Pg. 17
 P 110 P 111 Not Used

Parcel 67 Owners:
 P 69 James L. Whelan (Life Estate) Maria Kaye Wimpee (1/4 Interest) Loretta Gail Whelan (1/4 Interest) Terry Leonard Whelan (1/4 Interest) Mary Lynn Medley (1/4 Interest) DB. 635 Pg. 64
 P 70 William O. Mack Mattie Mae Mack (wife) DB. 101 Pg. 34 DB. 651 Pg. 51 (Self-off (P154))
 P 71 John S. O'Bryan Wilma H. O'Bryan (wife) DB. 539 Pg. 550
 P 72 John S. O'Bryan Wilma H. O'Bryan (wife) DB. 539 Pg. 550
 P 73 John E. Schwamberger Linda J. Schwamberger DB. 564 Pg. 243
 P 74 John S. O'Bryan Wilma H. O'Bryan (wife) DB. 539 Pg. 550
 P 75 Gregory Kyle Hardesty (unmarried) DB. 710 Pg. 124
 P 76 Michael R. Parr Betty A. Parr (wife) DB. 608 Pg. 280
 P 77 Benjamin O. Wilson Margaret M. Wilson (wife) DB. 389 Pg. 3 (Self-off Parcel 71) DB. 378 Pg. 152 (Oil & Gas Lease) DB. 509 Pg. 409 (Water Line Esmt.) Misc. Bk. 5 Pg. 113 (Water Well Agreement & Esmt.)
 P 78 Patricia Diann Shireman (unmarried) DB. 665 Pg. 298 DB. 509 Pg. 399 (Water Line Esmt.)
 P 79 Kenneth L. Bruner (Life Estate) Cassandra Gaye Basham (unmarried) 1/2 Int. Crystal Bruner Deane (married) 1/2 Int. DB. 709 Pg. 66 DB. 425 Pg. 278 (Water Line Esmt.)
 P 80 Leo B. Hardesty DB. 606 Pg. 271 DB. 426 Pg. 598 (Water Line Esmt.)
 P 81 W. Douglas Reed Donna K. Reed (wife) DB. 413 Pg. 564 PB. 5 Pg. 126
 P 82 P 83 P 84 P 85 P 86 P 87 P 88 P 89 P 90 P 91 P 92 P 93 Not Used
 P 84 Beth Page Greer (unmarried) DB. 627 Pg. 76 PB. 5 Pg. 126
 P 85 Tasha Rogers Parente DB. 391 Pg. 410
 P 86 Barbara J. Shacklette (widow) DB. 438 Pg. 1 DB. 438 Pg. 9 DB. 526 Pg. 350 (Affidavit of Descent)
 P 87 P 88 P 89 P 90 P 91 P 92 P 93 Not Used
 P 88 W. Douglas Reed Donna K. Reed (wife) DB. 413 Pg. 564 PB. 5 Pg. 126
 P 89 P 90 P 91 P 92 P 93 Not Used
 P 90 P 91 P 92 P 93 Not Used
 P 91 P 92 P 93 Not Used
 P 92 P 93 Not Used
 P 93 Not Used
 P 94 James P. Vessels Sr. Marilyn S. Vessels (wife) DB. 390 Pg. 324 PB. 2 Pg. 5
 P 95 P 96 P 97 P 98 P 99 P 100 Not Used
 P 96 Patrick C. Wheatley Mary Leona Wheatley (wife) DB. 327 Pg. 323 DB. 340 Pg. 214 DB. 343 Pg. 109 DB. 390 Pg. 324 (Self-off (P94)) DB. 426 Pg. 596 (Water Line Esmt.) PB. 2 Pg. 5
 P 97 P 98 P 99 P 100 Not Used
 P 98 P 99 P 100 Not Used
 P 99 P 100 Not Used
 P 100 P 101 P 102 P 103 Not Used
 P 101 P 102 P 103 Not Used
 P 102 P 103 Not Used
 P 103 Not Used
 P 104 Not Used
 P 105 P 106 P 107 P 108 P 109 P 110 Not Used
 P 106 Ronald L. & Barbara J. Greenwell Trust Barbara J. Greenwell, Trustee DB. 505 Pg. 265
 P 107 P 108 P 109 P 110 Not Used
 P 108 P 109 P 110 Not Used
 P 109 P 110 Not Used
 P 110 P 111 P 112 Not Used
 P 111 P 112 Not Used
 P 112 P 113 P 114 P 115 Not Used
 P 113 P 114 P 115 Not Used
 P 114 P 115 Not Used
 P 115 Not Used

BURGESS & NIPLÉ

FILE NAME: P:\PR52302\CADD\ROADWAY PLANS\R0500RW - COPY.DGN

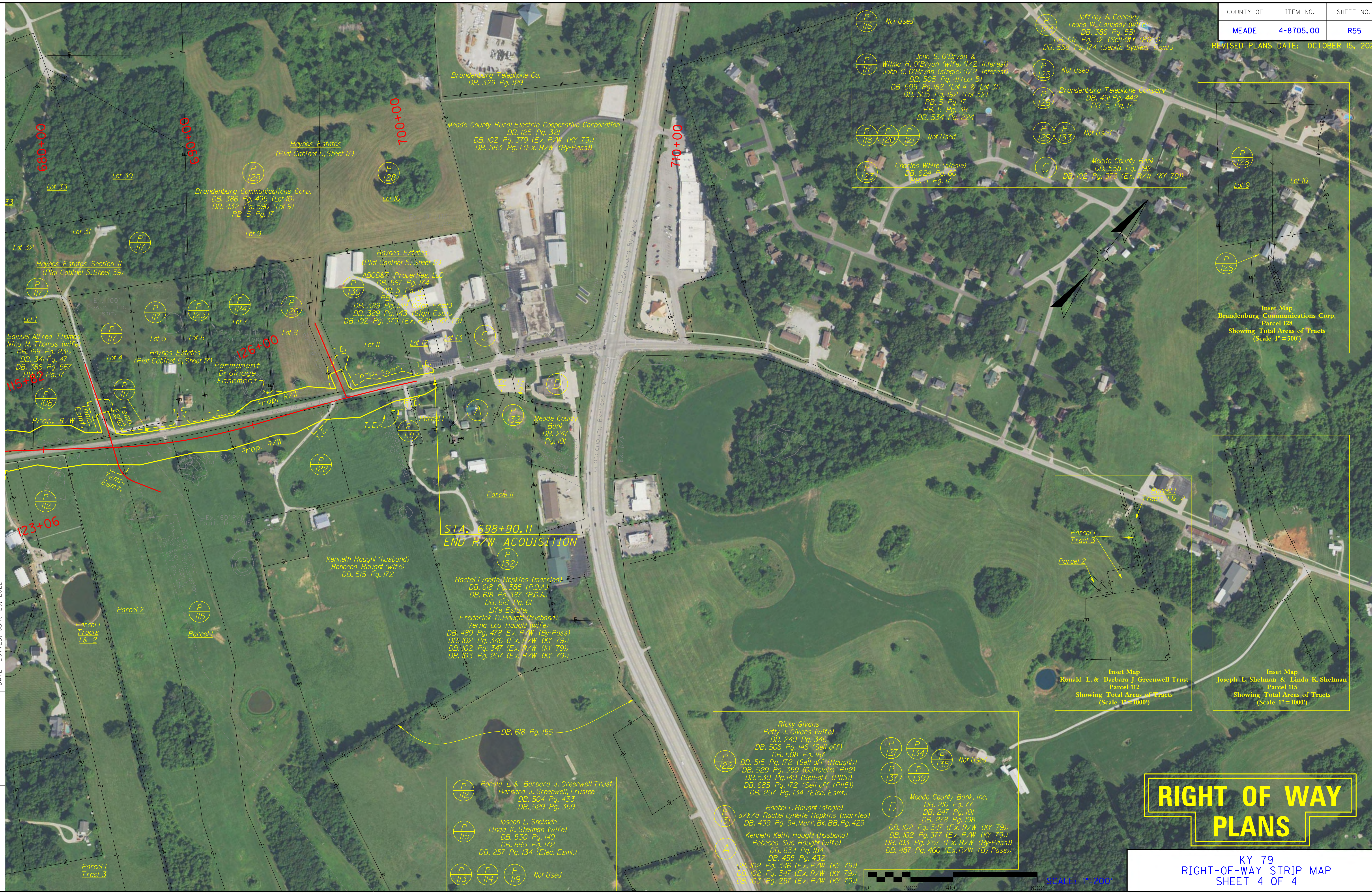
USER: herrick
DATE PLOTTED: June 23, 2022

E-SHEET NAME:

MicroStation v8.11.9.919

COUNTY OF	ITEM NO.	SHEET NO.
MEADE	4-8705.00	R55

REVISED PLANS DATE: OCTOBER 15, 2021



RIGHT OF WAY PLANS

KY 79
RIGHT-OF-WAY STRIP MAP
SHEET 4 OF 4

