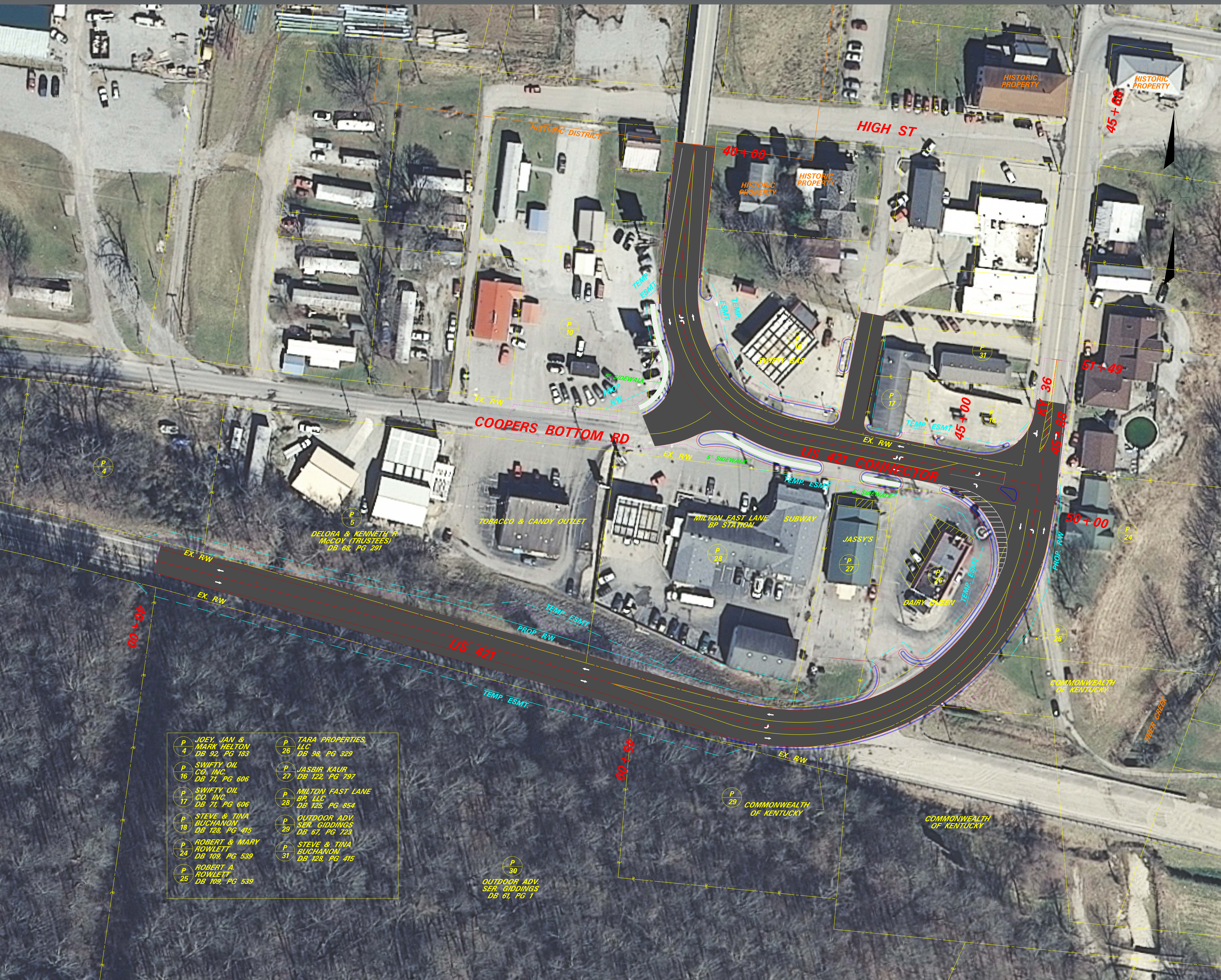




Item 5-135.81 - US 421
 Milton-Madison Bridge Approach
 Milton, KY
 Alternate C



- | | | | |
|------|--|------|---|
| P 4 | JOEY, JAN & MARK HELTON
DB 92, PG 183 | P 26 | TARA PROPERTIES, LLC
DB 98, PG 329 |
| P 16 | SWIFTY OIL CO, INC.
DB 71, PG 606 | P 27 | JASBIR KAUR
DB 122, PG 797 |
| P 17 | SWIFTY OIL CO, INC.
DB 71, PG 606 | P 28 | MILTON EAST LANE BP, LLC
DB 125, PG 854 |
| P 18 | STEVE & TINA BUCHANON
DB 128, PG 415 | P 29 | OUTDOOR ADV. SER. GIDDINGS
DB 67, PG 723 |
| P 24 | ROBERT & MARY ROWLETT
DB 109, PG 539 | P 31 | STEVE & TINA BUCHANON
DB 128, PG 415 |
| P 25 | ROBERT A. ROWLETT
DB 109, PG 539 | | |

P 30
 OUTDOOR ADV. SER. GIDDINGS
 DB 67, PG 1