



# Science Hill Railroad Crossing Study

## KYTC Item No. 8-9010.00

### Pulaski County

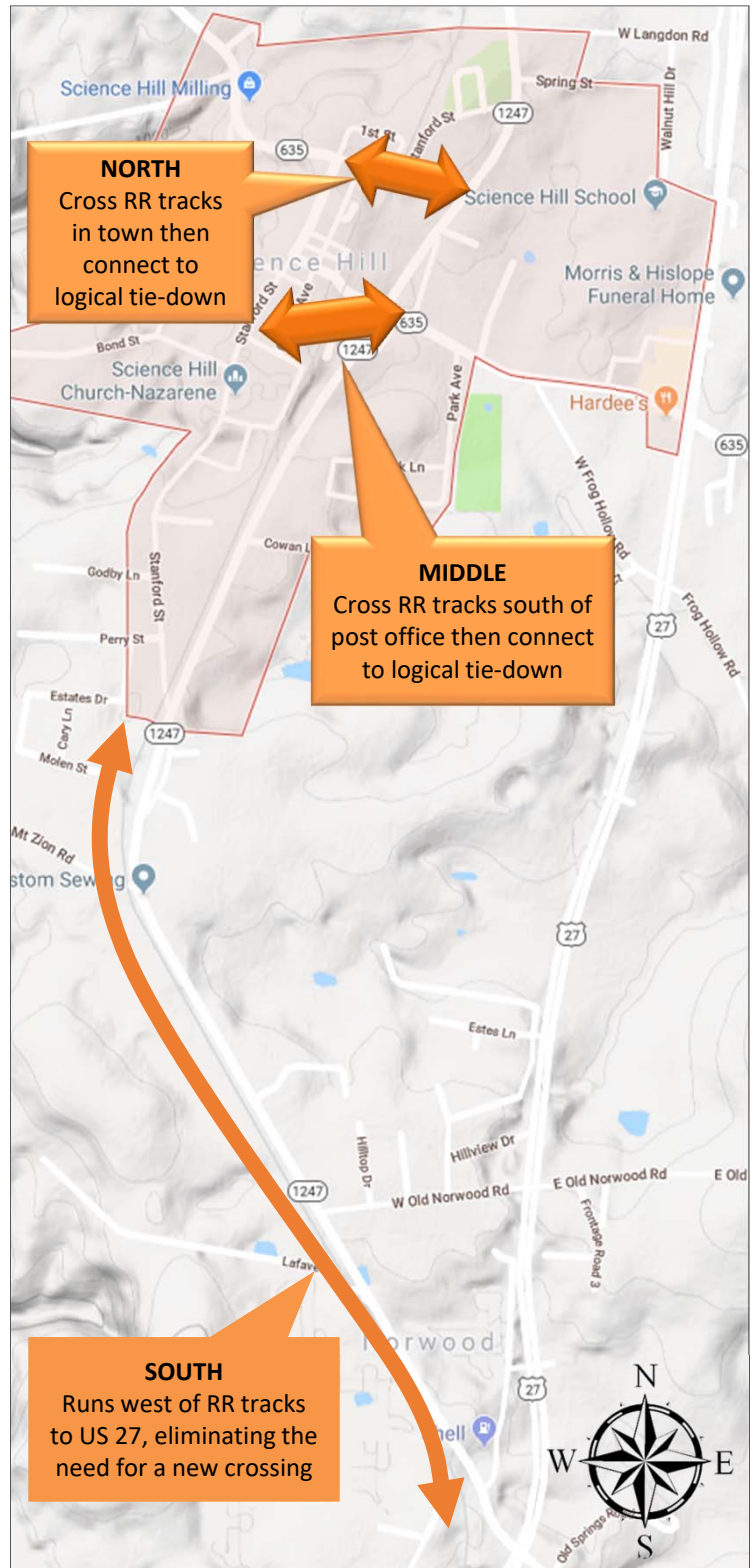
The purpose of this project is to **improve safety, cross-railroad mobility, and reliability for motorists—especially emergency responders—**in Science Hill, as the railroad tracks form a barrier between the eastern and western portions of town.

Needs are based on:

- Approximately 60 trains per day use route, blocking local at-grade crossings for up to 12 minutes at a time
- Delays impact emergency responders, school buses, other motorists
- Available detours increase travel times and distances

This study identifies costs and impacts associated with four alternatives that provide an east – west connection unimpeded by the railroad. KYTC’s FY 2018–FY 2024 Highway Plan identifies Federal Railroad Separation Protection Program (RRS) funds for design work. A condition to using RRS funds is that at least one at-grade rail crossing must be eliminated. Future right-of-way, utility, and construction phases are not funded within the current Highway Plan.

The project team has reviewed existing roadway and rail characteristics, traffic patterns, crashes, environmental features, and other information to assist in developing the alternatives presented. In October 2018, a meeting was conducted with local officials to identify their concerns. Considering this background information, the project team has developed a series of potential improvement concepts within: a **North, Middle** and **South** area (see map to right).



To share your opinions, take the survey.  
A QR code to access a survey is below or visit <https://surveymonkey/r/ScienceHill>



For more info, contact *Joseph Gossage, PE*  
KYTC District 8, 1660 South US 27 in Somerset, KY 42501  
By Phone: 606-677-4017  
By email: [Joseph.Gossage@ky.gov](mailto:Joseph.Gossage@ky.gov)



Within the North, Middle and South concepts, four build alternatives (Red, Green, Blue and Yellow) and a Molen Street connector (light orange) are presented for comment. The below drawing shows the alternatives (left) with a table of information comparing each alternative (right). Review the alternatives then take a quick survey to let us know what you think.

<https://surveymonkey/r/ScienceHill>



GENERAL INFORMATION	SOUTH CONCEPT		CAN BE USED WITH MIDDLE OR NORTH CONCEPTS		MIDDLE CONCEPT		NORTH CONCEPTS	
	RED	MIDDLE CONCEPT GREEN	MOLEN STREET CONNECTOR	GREEN	BLUE	YELLOW		
LENGTH (MILES)	2.06	0.36	0.14	0.36	0.56	0.30		
RR CROSSINGS CLOSED (#)	5 (Keep KY 2308 N Stanford St & KY 635 Main St)	1 (Close KY 635 Main St)	0	1 (Close KY 635 Main St)	1 (Close KY 2308 N Stanford St)	1 (Close KY 2308 N Stanford St)		
TRAFFIC DIVERSION AVERAGE DAILY TRAFFIC	3,000 vpd	3,650 vpd	N/A	3,650 vpd	3,600-4,100 vpd	4,050 vpd		
BRIDGES	None	Railroad; KY 1247	None	Railroad; KY 1247	Railroad	Railroad		
DESIGN SPEED (MPH)	55	30	30	30	35	30		
MAX GRADES	2.5%	8.4%	5.6%	8.4%	6.25%	6.0%		
STREAM IMPACTS (LINEAR FEET)	189	105	0	105	677	0		
POTENTIAL CHURCH IMPACTS (NOT INCLUDED IN RIGHT OF WAY RESIDENTIAL OR COMMERCIAL RELOCATIONS)	None	None	None	None	Northside Baptist Church parking and parsonage; Science Hill Christian Church building & parsonage	Northside Baptist Church parking; Science Hill Christian Church building & parsonage		
POTENTIALLY HISTORIC RESOURCES	1	1	0	1	0	0		
ESTIMATED RESIDENTIAL RELOCATIONS	11	8	0	8	5	4		
ESTIMATED COMMERCIAL RELOCATIONS	0	3	0	3	0	0		
COST	\$7,600,000	\$5,400,000	\$300,000	\$5,400,000	\$4,700,000	\$3,100,000		