



CALL NO. 408

CONTRACT ID. 192950

CLARK COUNTY

FED/STATE PROJECT NUMBER 025GR19M009 - FE02

DESCRIPTION VARIOUS BRIDGES IN CLARK COUNTY

WORK TYPE BRIDGE PAINTING & CLEANING

PRIMARY COMPLETION DATE 11/15/2019

LETTING DATE: January 25,2019

Sealed Bids will be received electronically through the Bid Express bidding service until 10:00 AM EASTERN STANDARD TIME January 25,2019. Bids will be publicly announced at 10:00 AM EASTERN STANDARD TIME.

NO PLANS ASSOCIATED WITH THIS PROJECT.

REQUIRED BID PROPOSAL GUARANTY: Not less than 5% of the total bid.

TABLE OF CONTENTS

PART I	SCOPE OF WORK
	<ul style="list-style-type: none">• PROJECT(S), COMPLETION DATE(S), & LIQUIDATED DAMAGES• CONTRACT NOTES• STATE CONTRACT NOTES• SPECIAL NOTE(S) APPLICABLE TO PROJECT• ASBESTOS ABATEMENT REPORT• MATERIAL SUMMARY• PRE-BID CONFERENCE
PART II	SPECIFICATIONS AND STANDARD DRAWINGS
	<ul style="list-style-type: none">• SPECIFICATIONS REFERENCE• SUPPLEMENTAL SPECIFICATION
PART III	EMPLOYMENT, WAGE AND RECORD REQUIREMENTS
	<ul style="list-style-type: none">• LABOR AND WAGE REQUIREMENTS• EXECUTIVE BRANCH CODE OF ETHICS• KENTUCKY EQUAL EMPLOYMENT OPPORTUNITY ACT OF 1978 LOCALITY / STATE• PROJECT WAGE RATES / STATE
PART IV	INSURANCE
PART V	BID ITEMS

PART I
SCOPE OF WORK

ADMINISTRATIVE DISTRICT - 07

CONTRACT ID - 192950

025GR19M009 - FE02

COUNTY - CLARK

PCN - MB02500891901

FE02 025 0089 B00021N 00.01

CLARK COUNTY 025B00021N WINCHERSTER ROAD MP 00.01
KY 89 OVER RED RIVERBRIDGE PAINTING & CLEANING
GEOGRAPHIC COORDINATES LATITUDE 37:49:19.00 LONGITUDE 84:04:10.00

PCN - MB02590001901

FE02 025 9000 B00055N 00.19

CLARK COUNTY 025B00055N MOUNTAIN PARIKWAY MP 00.19
MP 9000 OVER I-64BRIDGE PAINTING & CLEANING
GEOGRAPHIC COORDINATES LATITUDE 38:01:10.00 LONGITUDE 84:08:57.00

COMPLETION DATE(S):

COMPLETED BY 11/15/2019

APPLIES TO ENTIRE CONTRACT

CONTRACT NOTES

PROPOSAL ADDENDA

All addenda to this proposal must be applied when calculating bid and certified in the bid packet submitted to the Kentucky Department of Highways. Failure to use the correct and most recent addenda may result in the bid being rejected.

BID SUBMITTAL

Bidder must use the Department's electronic bidding software. The Bidder must download the bid file located on the Bid Express website (www.bidx.com) to prepare a bid packet for submission to the Department. The bidder must submit electronically using Bid Express.

JOINT VENTURE BIDDING

Joint venture bidding is permissible. All companies in the joint venture must be prequalified in one of the work types in the Qualifications for Bidders for the project. The bidders must get a vendor ID for the joint venture from the Division of Construction Procurement and register the joint venture as a bidder on the project. Also, the joint venture must obtain a digital ID from Bid Express to submit a bid. A joint bid bond of 5% may be submitted for both companies or each company may submit a separate bond of 5%.

UNDERGROUND FACILITY DAMAGE PROTECTION

The contractor shall make every effort to protect underground facilities from damage as prescribed in the Underground Facility Damage Protection Act of 1994, Kentucky Revised Statute KRS 367.4901 to 367.4917. It is the contractor's responsibility to determine and take steps necessary to be in compliance with federal and state damage prevention directives. When prescribed in said directives, the contractor shall submit Excavation Locate Requests to the Kentucky Contact Center (KY811) via web ticket entry. The submission of this request does not relieve the contractor from the responsibility of contacting non-member facility owners, whom shall be contacted through their individual Protection Notification Center. Non-compliance with these directives can result in the enforcement of penalties.

REGISTRATION WITH THE SECRETARY OF STATE BY A FOREIGN ENTITY

Pursuant to KRS 176.085(1)(b), an agency, department, office, or political subdivision of the Commonwealth of Kentucky shall not award a state contract to a person that is a foreign entity required by [KRS 14A.9-010](#) to obtain a certificate of authority to transact business in the Commonwealth ("certificate") from the Secretary of State under [KRS 14A.9-030](#) unless the person produces the certificate within fourteen (14) days of the bid or proposal opening. If the foreign entity is not required to obtain a certificate as provided in [KRS 14A.9-010](#), the foreign entity should identify the applicable exception. Foreign entity is defined within [KRS 14A.1-070](#).

For all foreign entities required to obtain a certificate of authority to transact business in the Commonwealth, if a copy of the certificate is not received by the contracting agency within the time frame identified above, the foreign entity's solicitation response shall be deemed non-responsive or the awarded contract shall be cancelled.

Businesses can register with the Secretary of State at <https://secure.kentucky.gov/sos/ftbr/welcome.aspx>.

SPECIAL NOTE FOR PROJECT QUESTIONS DURING ADVERTISEMENT

Questions about projects during the advertisement should be submitted in writing to the Division of Construction Procurement. This may be done by fax (502) 564-7299 or email to kytc.projectquestions@ky.gov. The Department will attempt to answer all submitted questions. The Department reserves the right not to answer if the question is not pertinent or does not aid in clarifying the project intent.

The deadline for posting answers will be 3:00 pm Eastern Daylight Time, the day preceding the Letting. Questions may be submitted until this deadline with the understanding that the later a question is submitted, the less likely an answer will be able to be provided.

The questions and answers will be posted for each Letting under the heading "Questions & Answers" on the Construction Procurement website (www.transportation.ky.gov/contract). The answers provided shall be considered part of this Special Note and, in case of a discrepancy, will govern over all other bidding documents.

HARDWOOD REMOVAL RESTRICTIONS

The US Department of Agriculture has imposed a quarantine in Kentucky and several surrounding states, to prevent the spread of an invasive insect, the emerald ash borer. Hardwood cut in conjunction with the project may not be removed from the state. Chipping or burning on site is the preferred method of disposal.

INSTRUCTIONS FOR EXCESS MATERIAL SITES AND BORROW SITES

Identification of excess material sites and borrow sites shall be the responsibility of the Contractor. The Contractor shall be responsible for compliance with all applicable state and federal laws and may wish to consult with the US Fish and Wildlife Service to seek protection under Section 10 of the Endangered Species Act for these activities.

ACCESS TO RECORDS

The contractor, as defined in KRS 45A.030 (9) agrees that the contracting agency, the Finance and Administration Cabinet, the Auditor of Public Accounts, and the Legislative Research Commission, or their duly authorized representatives, shall have access to any books, documents, papers, records, or other evidence, which are directly pertinent to this contract for the purpose of financial audit or program review. Records and other prequalification information confidentially

disclosed as part of the bid process shall not be deemed as directly pertinent to the contract and shall be exempt from disclosure as provided in KRS 61.878(1)(c). The contractor also recognizes that any books, documents, papers, records, or other evidence, received during a financial audit or program review shall be subject to the Kentucky Open Records Act, KRS 61.870 to 61.884.

In the event of a dispute between the contractor and the contracting agency, Attorney General, or the Auditor of Public Accounts over documents that are eligible for production and review, the Finance and Administration Cabinet shall review the dispute and issue a determination, in accordance with Secretary's Order 11-004.

April 30, 2018

SPECIAL NOTE FOR RECIPROCAL PREFERENCE

RECIPROCAL PREFERENCE TO BE GIVEN BY PUBLIC AGENCIES TO RESIDENT BIDDERS

By reference, KRS 45A.490 to 45A.494 are incorporated herein and in compliance regarding the bidders residency. Bidders who want to claim resident bidder status should complete the Affidavit for Claiming Resident Bidder Status along with their bid in the electronic bidding software. Submittal of the Affidavit should be done along the bid in Bid Express.

April 30, 2018

**SPECIAL NOTES
DISTRICT NO. 7
BRIDGE CLEANING AND PAINTING WITH REPAIRS
CLARK COUNTY
CID 192950 ~ 025GR19M009**

FE02 025 0089 B00021N 00.01

Clark County ~ KY 89 (Winchester Road) over Red River

Geographic Coordinates

Latitude – 37° 49' 19.00''

Longitude – 084° 04' 10.00''

Description

180'- 130' Steel Through Truss Spans, Drawing Nos. 05274, 09107, 19017

FE02 025 9000 B00055N 00.19

Clark County ~ KY 9000 (Mountain Parkway) over I-64

Geographic Coordinates

Latitude – 38° 01' 10.00''

Longitude – 084° 08' 57.00''

Description

64'-87'-98'-87' Steel Girder Spans, Drawing No. 14612

SPECIAL NOTES FOR CLEANING AND PAINTING

SPECIAL NOTE FOR BIDDING PREQUALIFICATION AND STAFFING

SPECIAL NOTE FOR SURFACE PREPARATION AND PAINT APPLICATION

SPECIAL NOTE FOR WASTE MANAGEMENT

SPECIAL NOTE FOR RECYCLABLE SURFACE PREPARATION RESIDUE
MANAGEMENT

SPECIAL NOTE FOR QUALITY CONTROL

SPECIAL NOTE FOR PAINT

SPECIAL NOTE FOR ENVIRONMENTAL AND WORKER SAFETY REGULATIONS

SPECIAL NOTE FOR PAYMENT

SPECIAL NOTE FOR STENCILING

SPECIAL NOTE FOR UTILITIES AND SIGNS

SPECIAL NOTE FOR WEIGHT LIMITS ON STRUCTURE

SPECIAL NOTE FOR HEAT STRAIGHTNING

SPECIAL NOTE STEEL REPAIRS

SPECIAL NOTE FOR JOINT SEAL REPLACEMENT

SPECIAL NOTE FOR MAINTAINING AND CONTROLLING TRAFFIC

SPECIAL NOTE FOR BIDDING PREQUALIFICATION AND STAFFING

Bidders shall be Pre-qualified under I18B – Bridge Painting to have a bid opened and read.

The contractor(s) and or subcontractor(s) performing painting operations shall retain staff meeting the requirements listed below for the duration of this contract. Any production work conducted while not meeting these requirements shall not be eligible for payment. The contractor(s) and or subcontractor(s) performing painting operations personnel shall have been directly responsible for field operations of a structure painting project containing the requirements listed below.

1. A structure over a river or having multiple structures (more than three)
2. Having specific containment requirements
3. Maintaining vehicular traffic.

The projects shall have been completed to the facility owners' satisfaction.

The Contractor(s) and or Subcontractor(s) performing the Joint Replacement operations required in this contract (not paint related) shall be Pre-qualified for appropriate work items.

SPECIAL NOTE FOR SURFACE PREPARATION AND PAINT APPLICATION

All structural steel shall be cleaned and painted in accordance with the Kentucky Transportation Cabinet, Department of Highways, Standard Specifications for Road and Bridge Construction (current edition), and the following requirements:

A. SUBMITTALS

The Contractor shall comply with the submittal requirements detailed in Section 108 of the Standard Specifications for Road and Bridge Construction (Current Edition) and submit the following **written** items to the Project Engineer **14 days** prior to the Pre-Construction Conference:

1. A detailed Progress of Work Schedule. The Progress of Work Schedule will be reviewed and approved by the KYTC Engineer.
2. Traffic Control Plan. The Traffic Control Plan will be reviewed and approved by the KYTC Engineer.
3. Worker Protection Plan. The Worker Protection Plan will be reviewed by the KYTC Engineer.
4. Environmental Compliance Plan, including a Waste Management and a Ground Water and Surface Water Protection Plan. The Environmental Compliance Plans will be reviewed by the KYTC Engineer.
5. Manufacturers' recommended Film Thickness and application conditions for the coating system to be used.
6. Rigging and Containment Plan, Design for rigging and containment shall be signed and stamped by a licensed Kentucky professional engineer. The design for containment will be reviewed by the KYTC engineer.

All submittals must be received, accepted and/or approved prior to beginning any work.

B. CONTAINMENT

All structural steel shall be totally enclosed during all phases of the work. All containment shall meet the criteria for **SSPC Guide 6 – Containment Classification Class 2A** for cleaning and painting of structural steel bridges.

Air Pressure- Negative air pressure meeting the requirements for **Type H2** shall be maintained.

Air Movement- A minimum air movement in containment is not specified but the contractor shall demonstrate that the air movement in the containment will provide the necessary engineering control to comply with OSHA worker safety requirements (i.e., lead standards as required by **29 CFR 1926**).

Emissions - Quantity of emissions from containment for structural steel bridges shall be assessed using Method A – Visible Emissions of **SSPC Guide 6** - Level 1 Emissions. Emissions shall be monitored for at least 15 minutes and reported in the logbook (**SEE SPECIAL NOTE FOR QUALITY CONTROL**) at least once for every four (4) hours of cleaning and painting.

Quantity of emissions from containment shall be assessed using **Method G** – Visual Assessment of Site Cleanliness. Results of the Method G assessment shall be reported in the logbook (**SEE SPECIAL NOTE FOR QUALITY CONTROL**).

Observance of emissions at any time may require (at the discretion of the Engineer) that cleaning and painting cease until the containment is sufficient to prevent emissions.

Provide proper (OSHA COMPLIANT) lighting on all operations (i.e. surface preparation, painting and inspection). Lighting for QA inspection shall meet the criteria described in **SSPC Guide 12** (Guide for Illumination of Industrial Painting Projects) for inspection.

The Contractor shall conduct EPA Ambient Air Monitoring for Toxic Metals (TSP-Lead) in accordance with 40 CFR 50 throughout all cleaning and painting operations. Background monitoring shall be conducted for a minimum of 3 days prior to mobilization of equipment and installation of containment materials. Additional monitoring may be requested at the discretion of the Engineer. Select an analytical laboratory which is approved to perform TSP-Lead analyses through the National Environmental Laboratories Accreditation Program (NELAP). Submit certified analytical results for each sample to the Engineer within 5 days of obtaining the sample. Emissions monitored by this method shall not exceed 1.5 micrograms per cubic meter ($\mu\text{g}/\text{m}^3$) as a 90 day average as defined in the National Ambient Air Quality Standard (NAAQS) for Lead. Calculations to determine adjusted acceptable allowances based on NAAQS and site specific schedules are detailed in SSPC Technology Guide No. 6 and SSPC Technology Update No. 7.

The contractor shall provide OSHA compliant safe access for all cleaning, painting, and inspections.

Wastes and residue deposited on the containment materials shall be collected daily. In addition, containment materials shall be cleaned prior to moving/dismantling. The Engineer may direct additional cleaning as conditions warrant.

C. SURFACE PREPARATION

Solvent Cleaning

All visible grease and oil shall be removed from the surface prior to abrasive blast cleaning. The surface shall be cleaned in accordance with **SSPC-SP 1** to remove oil, grease, and any other surface contaminants. Only solvents or detergents that are acceptable to the coating manufacturer and the Department shall be used. A clean cloth shall be used for the final wiping of the cleaned surface. All solvent cleaning materials shall be collected, handled, stored, and disposed of as hazardous waste.

Compressed Air

Compressed air used for any work shall be free from oil and/or water. The cleanliness of the compressed air shall be in accordance with **ASTM D 4285 (blotter test)**. The cleanliness of the compressed air shall be verified at least once per shift per compressor or as directed by the Engineer.

Abrasive Blast

All structural steel shall be abrasive blast cleaned to an **SSPC-SP 10/NACE NO. 2** “Near White Metal Blast Cleaning” standard as described in the current SSPC documents. After blast cleaning all surface imperfections that remain (e.g. sharp fins, sharp edges, weld splatter, burning slag, scabs, slivers, etc.) shall be removed. The abrasive blast profile shall be **angular, 1.5 to 4.5 mils** as measured in accordance with **ASTM D 4417 Method B**.

Abrasive Media

Clean, dry, uniformly graded recyclable steel grit or grit/shot abrasive mix shall be used to produce an angular profile for blast cleaning that is free of oil, soluble salts and other similar substances which could contaminate the blasted surface. The abrasive shall meet the **SSPC-AB 2** “Cleanliness of Recycled Ferrous Metallic Abrasive” standard.

Residual lead paint may still be on bridge. The Contractor is advised to take all necessary protective measures including worker safety and environmental regulations when performing surface preparation. The Department will not consider any claims based on residual lead paint.

D. PAINT APPLICATION

Areas shall not be painted until they have been inspected and approved by the Engineer. Paint shall be applied only to clean, dry surfaces. Ensure that the appropriate surface condition, as described in the Abrasive Blast Cleaning section, is present at the time of primer application (i.e. re-treat if rust-back occurs). Apply a **Class II (Type I or Type II)** system from the approved list referenced in the **SPECIAL NOTE FOR PAINT**.

All coatings shall be applied within manufacturers recommended dry film thickness range. Comply with KYTC “Standard Specifications for Road and Bridge Construction” Section 614.03.02 and coatings supplier recommended conditions for application.

The finish coat shall be gray and will meet the following values.

025B00021N

Green L* = 45.17 a* = -12.70 b* = 9.86 Federal Standard 595 Color FS X4172

025B00055N

Blue L* = 35.44 a* = 9.83 b* = -48.11 Federal Standard 595 Color FS X5095

Damages - All steps necessary to preclude damage to public property from paint overspray shall be taken. These steps shall include changes in the type of containment or cessation of spraying operations. The contractor shall be solely responsible for any damages arising from the painting operations.

Repair of paint defects - All defects in the new paint shall be repaired

E. PAINT STORAGE, HANDLING, SAMPLING, MIXING AND THINNING

A paint storage site for receiving and storing paint delivered for use on the project shall be established. The paint storage site shall be located separate from the job site. All new paint shall be received at the storage site for inventory and acceptance testing. At that time, have the Contractor's QC inspector (**SEE SPECIAL NOTE FOR QUALITY CONTROL**) and the Department's inspectors independently inventory the supplied paint by batch number and quantities delivered. Their tallies shall be compared and any differences resolved. The Department's inspector examines all paint containers delivered and rejects those with 1) broken seals, 2) rust, 3) and altered, missing or illegible batch numbers or labels. The Department's inspector numbers and initials each container with an indelible marker. A representative of the Department samples each lot of material (**SEE SPECIAL NOTE FOR PAINT**). Rejected paint containers shall be labeled "REJECTED" and dispose of them promptly. The unapproved and/or rejected containers of paint shall be stored separately from those that have been approved. No paint shall be permitted at the actual job site until the Division of Materials has approved it.

Both the Contractor's QC inspector and the Department's inspector shall conduct a daily start-up inventory of containers of approved paint brought to the job site noting batch numbers and the Department inspector's container number. At the end of the work day, the QC inspector and the Department's inspector shall conduct another inventory noting the number of paint containers expended, Department inspector's inventory numbers, and types of paint. Paint containers brought on the job site and not used shall be inventoried. Re-inventory those when they are taken back to the job site to be used.

The addition of solvents to paint shall be permitted **only** by written approval from the Engineer. Use only new solvents supplied by the paint manufacturer. Solvents shall only be used at the job site in the presence of the Department inspector. Solvents from new, unopened containers with the solvent manufacturer's labeling intact shall be used. The QC inspector shall record locations where solvent-thinned paint was used.

Solvents used for cleaning at the job site shall be kept in sealed containers away from mixing operations. Solvents used to clean brushes, rollers, or spray equipment shall be collected in sealed containers and stored as a hazardous waste.

The paint manufacturer shall be required to provide a technical representative at the job site when requested by the contractor or the Department at no additional cost to the Department.

F. WORKMANSHIP

All structural steel surfaces shall be properly cleaned and painted to the satisfaction of the Engineer. There shall be no provision for missed areas or substandard work regardless of size of the area in question. **All improperly prepared or painted surfaces shall be repaired to meet the provisions of this specification.**

Allowable field variation of the color of all cured finish coats on structural steel shall be $2.0\Delta E^*$. These values shall be obtained from a spectrophotometer utilizing a D65 illuminant at 45° illumination and 0° viewing with a 2° observer. The reference for this test shall be readings obtained on the initial test patch (**SEE SPECIAL NOTE FOR QUALITY CONTROL**). Surfaces with finish coats with color variations exceeding the $2.0\Delta E^*$ value shall be repainted at the option of the Engineer.

G. BRIDGE CLEANING AND PREVENTIVE MAINTENANCE

Surface Preparation: Remove all debris and clean all end bent caps, pier caps, pedestals, end bent back walls, all faces of parapet walls including end bent wing walls as shown in the concrete coating diagram, all deck drains and gutters 2'-0" each side of the bridge deck. Cleaning shall be done with pressure washing equipment. Equip the pressure washer(s) with calibrated gage(s) and pressure regulators to ascertain and regulate water pressure. All equipment for pressure washing shall be operated at a minimum pressure 4,000 psi with fan tips and or 0 degree spinner tips as determined by the engineer at the working location with a minimum flow rate of 3.5 gal/minute provided that these pressures do not disturb intact existing coatings. Pressure and flow rates shall be reduced or increased to a level satisfactory to the Engineer should any existing intact coating is disturbed due to power washing procedures. The washing wand must be approximately perpendicular to the washed surface and within a maximum 12 inches of the surface. Wand extensions greater than 36 inches will be subject to Central Office Division of Construction approval. Use clean potable water for all pressure washing.

Concrete Coatings: Apply concrete coatings to all end bent caps, pier caps, pedestals, end bent back walls, all faces of parapet walls including end bent wing walls as shown in concrete coating diagram after all debris are removed and power washing is complete. Use compressed air to remove any loose debris from the concrete surfaces that are to be coated after power washing. See concrete coating diagram. All coatings shall be applied within manufacturers recommended dry film thickness range. Comply with KYTC "Standard Specifications for Road and Bridge Construction" Section 614.03.02 and coatings supplier recommended conditions for application. Allow the surfaces to be coated to dry before any coating is applied. The coating must be applied to a clean and dry surface. All coating application shall be executed using brushes, rollers, etc. Spray application will be permitted if containment is in place for structural steel paint application. Use one of the following coating systems from the manufacture listed below shall be used. The Department requires acceptance testing of samples obtained on a per-lot basis per-shipment. The Division of Materials shall perform acceptance testing.

<u>Manufacture</u>	<u>Prime Coat</u>	<u>Finish Coat</u>
Sherwin Williams	Macropoxy 646	Acrolon 218 HS
PPG	Amberlock 2	Devoe Devflex HP
Carboline -	Carboguard 890	Carbothane 133 HB
Tnemec -	Elastogrip 151	EnviroCrete 156

The finish coat shall be gray and will meet the following values.

Grey L* = 74.94 a* = -1.54 b* = 3.92 Federal Standard 595 Color FS X6492

See attached detailed drawings for concrete coating diagram for additional details.

H. MEASUREMENT.

Clean and Paint Structural Steel: The Department will measure the quantity as “Lump Sum”.

Bridge Cleaning and Preventive Maintenance: The Department will measure the quantity as “Lump Sum”.

I. PAYMENT.

Clean and Paint Structural Steel (08434): Payment at the contract lump sum price includes all labor, materials, rigging, containment, and all incidental items necessary to complete this work in accordance with these Notes, Plans, the Standard Specifications or as directed by the Engineer for all structural steel.

Bridge Cleaning and Preventive Maintenance (23949EC): Payment at the contract lump sum price includes all labor, all materials and all incidental items necessary to complete this work in accordance with these Notes, Plans, the Standard Specifications or as directed by the Engineer for all structural steel.

SPECIAL NOTE FOR WASTE MANAGEMENT

All wastes shall be collected and placed in appropriate containers on a daily basis. **(SEE SPECIAL NOTE FOR ENVIRONMENTAL AND WORKER SAFETY REGULATIONS).**

Industrial waste

Dispose of industrial wastes (non-hazardous wastes) such as paint buckets, paint-contaminated rags, rollers, clogged spray hoses and brushes. Store industrial waste in appropriate containers, and appropriately labeled, prior to disposal. Industrial waste containers not covered or designed to prohibit entry of water, must be included in and comply with Ground Water and Surface water Protection requirements **(SEE SPECIAL NOTE FOR ENVIRONMENTAL AND WORKER SAFETY REGULATIONS - D. Groundwater and Surface water Protection).**

Hazardous Waste

Hazardous materials shall be stored separate from paint debris. All non-reusable solvents used in cleaning shall be considered hazardous waste. Store solvent wastes in separate containers (i.e. not with the paint debris).

The Department will provide a site on its property for the Contractor to erect a temporary storage facility. Store surface preparation debris and hazardous wastes at that site, in a secured six-foot high chain-link fence enclosure. The enclosure shall be built in accordance with **Standard Drawing No. RFC-001-07** of the Kentucky Department of Highways Standard Drawings Book, with the **exception that concrete is not required for installation of posts**. The fence of the storage area must be firmly attached to metal posts and have a locked gate. The gate shall be secured to the fence post by a chain and a lock. Each side of the enclosure shall have appropriate placards forbidding unauthorized entrance and announcing that the area is a storage site for lead and hazardous wastes. Cover the ground where the containers will be stored with a waterproof tarpaulin. The contractor shall maintain the tarpaulin to avoid tears or punctures. Drums shall be set on skids that are placed on the tarpaulin. There shall be an adequate aisle space between the rows of stored drums so that the drums and labels can be inspected at any time. Areas around roll off containers shall be covered with tarpaulins. Tarpaulins shall be cleaned daily to remove collected lead bearing debris. The storage area shall be maintained / operated to prevent releases. The storage area shall have a spill clean-up kit. The kit shall include, but not be limited to shovel, broom, dustpan and absorbent material for solvents. There shall be access to communications or alarms whenever authorized personnel are in the storage compound.

The designated temporary storage facility shall be constructed and accepted by the Engineer prior to the onset of operations at the job site. The temporary storage facility shall be maintained during the active cleaning and painting of the bridge and return the site to its original state when the work is completed.

The Contractor shall be solely responsible for the management and the disposal of all hazardous waste generated during the cleaning and painting operations in accordance with the Kentucky Revised Statutes, Chapter 224, Subchapter 46, and the Kentucky Administrative Regulations promulgated pursuant thereto.

The Kentucky Transportation Cabinet will file a Notification of Hazardous Waste Activity with the Kentucky Division of Waste Management to obtain an EPA Identification Number in accordance with **401 KAR 32:010, Section 3**. The Cabinet will provide the Contractor with this EPA ID number to be used in hazardous waste management in compliance with **401 KAR 32:010, Section 3 (1)**.

The Contractor shall be responsible for furnishing appropriate U.S. DOT containers that are made or lined with materials which are compatible with the hazardous waste to be stored in accordance with **401 KAR 35:180, Section 3**. All hazardous wastes collected at the job site shall be placed in those containers for transport to the storage site. The containers shall be used and managed at the job site and at the storage site in accordance with **401 KAR 35:180**. Prior to the transfer of the containers of hazardous waste from the job site to the storage area, the containers shall be correctly sealed, labeled, marked and placarded as defined in the pre-transport requirements of **401 KAR 32:030**.

Each container shall be labeled "Hazardous Waste" and the date clearly marked when the hazardous waste is *first* added to the container in compliance with **401KAR 35:180, Section 4(3)**. That date marked is the *start date* of the **seventy-five (75)** day storage period

The generator for the waste under this contract is the Kentucky Transportation Cabinet. All records including the labels on the waste containers and the manifests shall be completed using the Transportation Cabinet as the generator.

The Department requires that all hazardous waste shall be removed within seventy-five (75) days of the accumulation start date. The Contractor shall select a registered hazardous waste transporter to transport the containers of hazardous waste generated during the painting operations to a permitted hazardous waste treatment, storage or disposal facility. The hazardous waste must be manifested with a Uniform Hazardous Waste Manifest that is to be completed, in entirety, as per the regulations of **401 KAR 32:020** and **401 KAR 32:100**. Copies of all manifests with the Land Disposal Restriction Notice must be provided to the Project Manager and the Central Office, Division of Construction. **Final partial payment of 15% for the project will not be released until the Department receives all copies of the manifests.**

Failure to remove the hazardous waste within **Seventy-Five (75) days** shall result in a performance penalty of **Two Thousand Dollars (\$2,000.00)** per drum per day or **Eight Thousand Dollars (\$8,000.00)** per cubic yard per day that the containers are left in storage. This penalty is in addition to any fines that may be assessed by regulatory agencies other than the Transportation Cabinet.

PAYMENT

All cost for Industrial and Hazardous waste disposal shall be considered incidental to the lump sum bid for: **Clean and Paint Structural Steel (08434)**.

SPECIAL NOTE FOR RECYCLABLE SURFACE PREPARATION RESIDUE MANAGEMENT

The surface preparation debris generated at structural steel bridges shall be transported and recycled as a commercial substitute material in a recycling effort. All waste/debris collection, handling, storage, transportation, and disposal shall be the responsibility of the contractor.

Abrasive Media

Clean, dry, uniformly graded recyclable steel grit or grit/shot abrasive mix shall be used to produce an angular profile for blast cleaning that is free of oil, soluble salts and other similar substances which could contaminate the blasted surface. The abrasive shall meet the **SSP-AB 2** "Cleanliness of Recycled Ferrous Metallic Abrasive" standard.

Collection, Handling, and Storage of Wastes and Surface Preparation Debris

A "Competent Person for lead abatement" as defined by OSHA 1926.62 shall be on site during any operations which disturb lead. The "competent person" shall have successfully completed the **SSPC C3** "Supervisor/Competent Person Training for De-leading of Industrial Structures" or equivalent training.

All surface preparation debris shall be collected separate from waste materials and placed in appropriate containers on a daily basis. **(See Special Note for Environment and Employee Safety Regulations)**

Surface preparation debris

Surface preparation debris shall be separated from all wastes. While on-site, the surface preparation debris shall be managed as lead containing material. Precautions shall be taken to protect employees and the public from exposure to lead. Handling and storage of surface preparation debris shall be accomplished to prevent releases to the environment.

The Department will provide a site on its property for the Contractor to erect a temporary storage facility. Store surface preparation debris and hazardous wastes at that site, in a secured six-foot high chain-link fence enclosure. The enclosure shall be built in accordance with Standard **Drawing No. RFC-001-07** of the Kentucky Department of Highways Standard Drawings Book, with the **exception that concrete is not required for installation of posts**. The fence of the storage area shall be firmly attached to metal posts and have a locked gate. The gate shall be secured to the fence post by a chain and a lock. Each side of the enclosure shall have appropriate placards forbidding unauthorized entrance and announcing that the area is a storage site for lead and hazardous wastes. The ground where the containers will be stored shall be covered with a waterproof tarpaulin. The contractor shall maintain the tarpaulin to avoid tears or punctures. Drums shall be set on skids that are placed on the tarpaulin. There shall be an adequate aisle space between the rows of stored drums so that the drums and labels can be inspected at any time. Areas around roll off containers shall be covered with tarpaulins. Tarpaulins shall be cleaned daily to remove collected lead bearing debris. The storage area shall be maintained / operated to prevent releases. The storage area shall have a spill clean-up kit. The kit shall include, but not be limited to shovel, broom, dustpan and absorbent material for solvents. There shall be access to communications or alarms whenever authorized personnel are in the storage compound.

The designated temporary storage facility shall be constructed and accepted by the Engineer prior to the onset of operations at the job site. The temporary storage facility shall be maintained during the active cleaning and painting of the bridge and return the site to its original state when the work is completed.

The Contractor shall be solely responsible for the management and the disposal of all surface preparation debris and hazardous waste generated during the cleaning and painting operations. Hazardous wastes shall be managed in accordance with the Kentucky Revised Statutes, Chapter 224, Subchapter 46, and the Kentucky Administrative Regulations.

The Contractor shall be responsible for furnishing appropriate U.S. DOT-specified containers that are made or lined with materials that are compatible with the surface preparation debris per 49CFR173.213 (non-bulk containers) or 49CFR173.240 (bulk containers). All surface preparation debris collected at the job site shall be placed in those containers for transport to the storage site. Prior to the transfer of the containers of surface preparation debris from the job site to the storage area, the containers shall be correctly sealed, labeled, marked and placarded as defined in the pre-transport requirements of 49CFR172.301 (non-bulk containers) or 49CFR172.302 (bulk containers). The Contractor shall check with the recycler and the transporter to insure that containers acceptable to both parties are employed.

The Contractor shall be responsible for the quality of the surface preparation debris placed in disposal containers. Under NO circumstances shall the debris become wet or be co-mingled with miscellaneous wastes.

Transportation and recycling

All surface preparation debris shall be transported for recycling within 90 days of initial container filling operations. The contractor shall contact the recycler to arrange for the delivery of the surface preparation debris. The recycler is: The Doe Run Company: Resource Recycling Division, HC1 Box 1395, HWY 10K, Boss, MO 65440, phone (573) 626-4813, fax (573) 626-3304, email www.doerun.com. The contractor will complete the Doe Run Supplier Profile Form and provide copies of it to both Doe Run and the Engineer prior to transporting the surface preparation debris.

The contractor shall select a registered hazardous material (HAZMAT) transporter for transportation of the surface preparation debris. The contractor shall provide the necessary waste storage/transportation containers. The contractor shall arrange for the pick-up of the containers and delivery to the recycler.

NOTE: The contractor shall be responsible for the condition of the surface preparation debris provided to the recycler. Surface preparation debris that is wet debris or that is co-mingled with other waste will be rejected by the recycler. If that occurs, the contractor must dispose of the debris as a hazardous waste. The contractor must promptly inform the Engineer in that event so that KYTC can obtain the proper permitting from the Kentucky Environmental and Public Protection Cabinet. Additionally, the contractor shall be responsible for all transportation costs, hazardous waste disposal costs and fines that are incurred.

The contractor shall supply the Engineer with all weight tickets for the commercial substitute material transported and delivered to the recycler and all Certificates of Recycling issued by the recycler for material deliveries related to this project. **Final partial payment of 15% for the project shall not be released until the Engineer has received these documents.**

PAYMENT

All cost for the management and the disposal of all surface preparation debris and hazardous waste generated during the cleaning and painting operations shall be considered incidental to the lump sum bid for **Clean and Paint Structural Steel (08434)**.

SPECIAL NOTE FOR QUALITY CONTROL

The contractor shall provide QC inspectors to monitor all work, insure that all work is completed in accordance with the Special Notes and Standard Specifications, and record inspection results. All QC inspectors shall possess at a minimum one of the following certifications: **SSPC-BCI level 1 or NACE CIP level 1**. The QC inspector(s) shall not perform production work that requires QC/QA inspection. The Department's (QA) inspector shall conduct in-progress reviews of the Contractor's operations and perform follow-up quality assurance (QA) inspections after the QC inspector has certified that a portion of work is complete.

Progress of Work - Work shall proceed by sections, bays or other readily identifiable parts of the structure. All work shall proceed from top to bottom of the structure. The work shall be broken down into adjacent sections (control areas) separated by bulkheads. Bulkheads shall be sealed to the containment and meet all **SSPC Guide 6 – Containment Classification Class 2A** requirements. Only one phase of work shall be permitted in a given control area at any time.

In any control area, Quality Control Point inspection and approval shall precede the start of succeeding phases of work. Quality Control Points are progress milestones that occur when one phase of work is complete and ready for inspection prior to continuing with the next operational step. At those points, the Contractor shall provide the Departments QA inspectors with OSHA compliant access to inspect all pertinent surfaces. If QA inspection indicates a deficiency, that phase of the work shall be corrected and re-inspected prior to beginning the next phase of work.

Quality Control Point

QC Inspection Function

- | | |
|---|--|
| 1. Surface Preparation | |
| A. Solvent Cleaning | Visually inspect. |
| B. Abrasive Blast Cleaning | Measure profile
Visually inspect for cleanliness. |
| 2. Full Prime Coat Application | Check for dry film thickness, and defects in paint |
| 3. Full Intermediate Coat (if applicable) | Check for dry film thickness, and defects in paint |
| 4. Finish Coat Application | Check for dry film thickness, paint appearance, color and quality of application |

The surface profile shall be verified with a minimum of 3 measurements per nozzle per shift. Each measurement shall be the average of 3 individual readings. Individual gage readings and averages shall be recorded in the log book. The Engineer may request additional measurements at any time.

The QC Inspector shall inspect prepared surfaces to determine whether those conform to the specification (see **SPECIAL NOTE FOR SURFACE PREPARATION AND PAINT APPLICATION**). Inspect each individual coat of paint using **KM 64-258-08 Procedure C**. Inspect for areas of incomplete coating coverage and coating defects. The Engineer may request tests, including destructive DFT tests, at additional sites or he may elect to perform additional tests.

The QC inspector shall maintain a handwritten record of all-painting activities, operations and inspections in the log book(s). At a minimum, the following information must be recorded:

1. all paint inventory and approval information,
2. daily records of ambient conditions (including all measurements taken),
3. daily progress of work information including start-up/shut-down times, bridge locations by control numbers, structural steel components by proper terminology and pertinent operations by control points, and
4. QC inspection information including evaluations at control points, rework comments, or approvals.

Make entries on consecutive pages of the logbook (in indelible ink) and make corrections by marking through mistakes with a single line. Do not remove pages or erase or obliterate entries in the logbook.

The QC inspector and QA inspector shall jointly assign adjacent control areas consecutive numbers and a short description defining their location. After completion of a phase of work in a control area, the QC inspector shall perform an inspection and shall determine whether the area has been satisfactorily prepared. If work in a control area is unsatisfactory, the QC inspector shall require the contractor to make the necessary corrections. That process shall be repeated as necessary until suitable corrections have been made. All logbooks shall be maintained at the job site at all times during the project, made available, upon request, to the Department's representatives and submitted to the Engineer at the end of the project for his review and records.

Test Patch - Prior to initiation of painting, prepare at least one test patch in each Section of work to serve as a standard for reference during the balance of the painting operations. The test patch shall be located at an accessible area incorporating surface types of the project. Use the specified surface preparation on a surface with at least 20 ft² per application method per coating plus 20 ft² for surface preparation. When Central office personnel, the Engineer, QC inspector, and the QA inspector, agree that the appropriate level of cleanliness and surface preparation have been achieved, the contractor shall apply a clear sealer, supplied by the coatings manufacturer, to at least 20 ft² of the prepared surface. The contractor will then apply coating to the remainder (at least 20-ft²) of the test patch. Set aside the test patch area as a standard for proper application and appearance. Do not paint the reference areas until the balance of the project is completed. After the project is complete, re-blast the area of the test patch with clear sealer, and apply all specified coatings. Apply all coatings, including the clear sealer, in the presence of Central Office personnel, the Engineer, the QA inspector, QC inspector, and a technical representative of the paint manufacturer. If QC and QA inspectors agree, clear coat preservation of the test patch may be replaced with pictorial records.

PAYMENT

All cost to provide QC inspectors shall be considered incidental to the lump sum bid for:
Clean and Paint Structural Steel (08434).

SPECIAL NOTE FOR PAINT

Use a coatings system from an approved supplier. A list of approved suppliers shall be found in the Department's List of Approved Materials maintained by the Division of Materials. All paint supplied shall conform to the applicable Special Notes contained in this proposal. The Department requires acceptance testing of samples obtained on a per-lot basis per-shipment. The Division of Materials shall perform acceptance testing. At his option, the Engineer may elect to conduct more frequent sampling and testing. Test samples shall be taken at the Contractor's paint storage site. Department personnel shall perform sampling. Allow (10) working days for testing and approval of the sampled paint.

Note: It is the Contractor's responsibility to maintain an adequate inventory of approved paint. The Department shall assume no responsibility for lost work due to rejection of paint or approved paint subsequently found to be defective during the application process.

SPECIAL NOTE FOR ENVIRONMENTAL AND WORKER SAFETY REGULATIONS

(A) Governing regulations

The existing paint in this project may contain lead, which is classified as a hazardous (toxic) material. Be knowledgeable of and comply with, all **lead-related** environmental and health regulations governing the Contractor's operations. Comply with regulations current at the time the work is performed and all requirements herein. Collect, transport to waste storage sites, and store hazardous wastes in accordance with applicable environmental and health regulations. The contractor is solely responsible for collection, transport, storage and disposal of all industrial wastes.

(B) Liabilities and Obligations

The contractor shall be solely responsible for compliance with all applicable environmental and health and safety regulations to the satisfaction of the applicable government regulatory agencies and the Department. The Department assumes no obligations or liabilities for work stoppages or fines due to enforcement actions by government regulatory agencies or to related delays that the Department deems necessary.

(C) State and Local Regulatory Agencies

State and local regulatory agencies charged with enforcing **most** regulations affecting the generation of hazardous wastes and worker safety issues are:

Kentucky Occupational Safety and Health Program, Labor Cabinet, Commonwealth of Kentucky, Frankfort, Kentucky

Environmental and Public Protection Cabinet, Commonwealth of Kentucky, Frankfort, Kentucky

(D) Groundwater and Surface water Protection

The contractor shall prepare and implement a groundwater and surface water protection plan in accordance with **401 KAR 5:037 (Ground Water), KRS 224.70-110 and 401 KAR 10:031 (Surface water)** with the exception that hazardous waste or hazardous materials container volume is not limited to greater than 55 gallons or weight to 100 pounds.

SPECIAL NOTE FOR PAYMENT

Payment for cleaning and painting structural steel shall be according to Standard Specifications for Road and Bridge Construction (Current Edition) Section 614.05 with the following modification to Section 614.05.

Three-Coat Field Applied System. Partial payments will be based on acceptance of the following:

Surface Preparation	25%
Prime Coat	20%
Intermediate Coat	20%
Finish Coat	20%
De-rigging, touch-up of de-rigging marks and damage, and Environmental documentation	15%

SPECIAL NOTE FOR STENCILING

The Bridge Number, the Month and year of the completion date, and any existing panel number system or panel number system set forth in the contract shall be stenciled on the structure at locations determined by the Engineer. Make the legend in letters and numerals at a minimum of 3 inches and maximum of 6 inches tall, and use a paint color that contrasts with the background.

SPECIAL NOTE FOR UTILITIES AND SIGNS

All utilities, traffic lighting, navigational lighting and traffic signs shall be maintain and protected from damage.

All electric power that may on the structure shall be de-energized. The Contractor shall coordinate with the Department to have the power de-energized.

SPECIAL NOTE FOR WEIGHT LIMITS ON STRUCTURE

025B00021N is rated at **10** tons.

025B00055N is rated at **31** tons.

No equipment, materials, vehicles, trailers nor combination of thereof exceeding the load rating of each structure listed above shall be placed on or drive across the structure. If the Contractor chooses to stage from the bridge deck he must submit a plan for approval by the KYTC Engineer showing placement and weight of all equipment.

SPECIAL NOTE FOR HEAT STRAIGHTENING

These Notes or designated portions thereof, apply where so indicated on the plans, proposals or bidding instruction.

1. DESCRIPTION

Perform all work in accordance with the Department's current Standard Specifications, except as hereafter specified. Section references are to the Standard Specifications.

This work consists of: (1) Furnishing all labor, materials, tools, and equipment; (2) Heat straighten damaged steel member(s) as specified herein; (3) Remove & re-install/replace damaged structural steel as outlined in the plans; (4) Maintain & control traffic; and, (5) Any other work specified as part of this contract. Heat straightening of the damaged steel bridge member(s) shall be performed by the carefully planned and supervised application of a limited amount of localized heat to the damaged member(s). Mechanical means may be used to supplement the straightening of the material in conjunction with the application of the heat.

2. MATERIALS

A. Epoxy Patching Mortar. Any epoxy mortar product meeting the requirements of ASTM C881 and Section 826 and approved for vertical and overhead repair patching applications or an epoxy mortar product approved for epoxy injection repairs as applicable. Furnish manufacturers literature for approval prior to ordering material.

3. CONSTRUCTION METHODS

A. Field Inspection: Prior to beginning any work, the damaged member(s) shall be carefully inspected by the Engineer and Contractor for gouges, sharp dents, cracks, or other defects. The steel shall be checked for fine cracks using magnetic particle testing (ASTM E-709). Defects found shall be repaired to the satisfaction of the Engineer. Cost of inspections and repairs is to be considered incidental to the lump sum bid for 'Heat Straightening'. All web defects and minor flange defects shall be remediated by grinding smooth or other means prior to heat straightening to eliminate stress concentrations. The Contractor shall grind out remaining isolated cracks in a dish like shape whose sides shall taper approximately 3h:1v. If the crack is not removed after grinding, a 1½" dia. crack arrest hole shall be drilled to just intersect the crack tip. Flange cracks and major defects if encountered shall be repaired as directed by the Engineer. Broken welds will be fixed by torching welds to a half moon shape to relieve stress. This may include drilling of member to expose the entire weld. In no case, shall the cracks be "v" grooved and filled with welding material. Lead-containing paint may be encountered in some repair areas. The Contractor shall make all provisions necessary to ensure the safety of the workers, inspectors, and travelling public. No claims will be entertained by the Department due to Lead-based paint on the structure. The cost for all materials, labor, and equipment required for the inspection of the steel and/or the removal/remediation of defects shall be considered incidental to and included in the Lump Sum Bid for "Heat Straightening".

B. Heat Straightening Work Proposal: Upon completion of the inspection and crack remediation of the damaged member(s), the Contractor shall submit in writing for the Engineer's review and approval:

1. Maintenance of Traffic and Lighting Plan.
2. 'Heat Straightening Plan' with typical or expected procedures for heat straightening including but not limited to maximum heating temperatures, points of heat application, and proposed jacking or strutting forces which conform to the latest edition of the FHWA 'Guide for Heat-Straightening of Damaged Steel Bridge Members'

No heat straightening operations shall occur prior to the Engineer's review and approval of the 'Heat Straightening Plan'.

C. Application of Jacking Forces: Jacks or "come-alongs", not exceeding 25 ton capacity, may be used to bring stretched steel surfaces into limited compression as a means of mechanically augmenting the heat straightening process. The load shall be carefully applied prior to the application of heat. The load shall not be increased during the heat cycle. After a number of heat cycles, the load may be adjusted to compensate for the effects of the heat cycles. Any section of the beam that becomes distorted, cracked, or permanently deformed due to methods of handling, supporting, and loading or by any other means shall be replaced or repaired as directed by the Engineer. The cost of the replacement beam or repair shall be borne solely by the Contractor.

D. Field Supervision of Repairs: The Engineer and Contractor shall periodically and routinely monitor heating temperatures and jacking forces to insure compliance with the limits approved in the 'Heat Straightening Plan'.

The Contractor shall provide and use one or more of the following methods for verifying temperatures during heat straightening:

1. Temperature sensitive Crayons
2. Pyrometer
3. Infrared non-contact thermometer.

There shall be no heat straightening work performed unless one of these listed devices is on hand to monitor the steel temperature. Heating patterns and sequences shall be selected to match the type of damage and cross section shape.

E. Tolerances: The acceptable local tolerances for straightness in damaged area are:

1. Horizontal sweep: 1/2 – inch per 20 feet of length, At the point of impact: 3/8 - inch per 5 feet or 1/2 inch per 8 feet.
2. Vertical Deflection: 1/4 – inch maximum,
3. Deflection of Web (out of plane of web): 1/4 inch vertical or horizontal maximum.

Tolerances shall be met before any cross frames or other lateral restraint devices are attached. In no case, shall the beams(s) be forced into position and then welded or bolted to the cross frames or diaphragms to hold them in position.

F. Post Heating Inspection: After heat straightening work is complete, the straightened and repaired member(s) shall be inspected by the Engineer and Contractor for any gouges, sharp dents, cracks, or other defects. This testing and inspection will be made using methods and procedures as listed in the pre-straightening inspection. Defects found shall be repaired to the satisfaction of the Engineer using procedures outlined in A. above. Cost of inspections and repairs is to be considered incidental to the lump sum bid for 'Heat Straightening'.

H. Epoxy Repair: Concrete deck damage resulting from either collision or the Contractor's work in the near vicinity of the heat straightening shall be repaired using an approved epoxy patching mortar. Where the top flange of the beam(s) has pulled away from the concrete bridge deck, the resulting void shall be completely filled by epoxy mortar injection with Type III epoxy after completion of the heat straightening work. The cost for all materials, labor, and equipment required for the epoxy injection and patching repairs shall be considered incidental to the Lump Sum Bid for "Heat Straightening".

I. Girder Repair: See Special Note for Steel Repair.

4. MEASUREMENT

A. Heat Straightening: The Department will not measure the quantity.

5. PAYMENT

A. Heat Straightening (23594EC): Payment at the contract lump sum bid shall be full compensation for furnishing all labor, materials, equipment, tools, and incidentals necessary to heat straighten all damaged steel beams in accordance with this Special Note, the Standard Specifications, and the Contract Documents as outlined herein.

SPECIAL NOTE FOR STEEL REPAIRS

- 1. DESCRIPTION.** Perform all work in accordance with the Kentucky Transportation Cabinet, Department of Highway's Standard Specifications for Road and Bridge Construction and applicable Supplemental Specifications, the Standard Drawings (Current Editions), this Note, and the attached detailed drawings for Beam Repair. Section references are to the Standard Specifications. This work consists of the following: (1) Furnish all labor, materials, tools, and equipment; (2) Maintain and control traffic; and (3) Steel Repairs; (4) Any other work specified as part of this contract.
- 2. MATERIALS.**
 - A. Structural Steel**

ASTM Material, A709 Grade 50 Structural Steel Plates and Shapes.
Minimum structural steel strength ~ 50,000 psi.
 - B. High Strength Bolts**

All bolted connections in the cross bracing repairs, truss member repairs, and girder repair shall be ASTM A325 3/4" diameter high strength galvanized bolts, nuts and washers. Holes shall be 13/16" diameter. Maintain a minimum 1 1/2" between the edge of any plate or angle and the center of the bolt hole. All bolted connections in the vertical member repairs shall be ASTM A325 1" diameter high strength galvanized bolts, nuts and washers. Holes shall be 1 1/16" diameter. Furnish all type 1 galvanized bolts as described in AASHTO M164.
 - C. Welds**

See Section 607.03.07
 - D. Paint**

See special note for surface preparation and paint application.
- 3. CONSTRUCTION.**
 - A. Steel Repairs.** Complete all steel repairs as specified in this special note and shown in the attached detailed drawings.
 - B. High Strength Bolts.** Install all high strength bolted field connections using "direct tension indicators" (DTIs) in accordance with the Standard Specifications and ASTM F959. Install DTIs under the bolt head with the bumps facing the underside of the bolt head. Place a hardened washer under the nut tension connection from the nut side.
 - C. Verifying Field Conditions.** The Contractor shall field verify all plate and shape dimensions, bolt patterns and locations before ordering any material. New material that is unsuitable due to variation in existing structure shall be replaced at the Contractors expense.
 - D. Damage to the structure.** The Contractor shall bear all responsibility and expense for any and all damage to the structure during the repair work, even to the removal and replacement of a fallen span, should the fallen span result from the Contractors actions.
 - E. Shop Drawings.** Shop drawings will not be required. The Contractor is responsible for obtaining field measurements and supplying properly sized materials to complete the work.

- F. Cleaning and Painting.** All existing faying surfaces where new steel is to be installed shall be cleaned and receive the prime coat as specified in Special Note for Surface Preparation and Paint Application. Level of cleaning shall be to an **SSPC-SP 15** (Commercial Grade Power Tool Cleaning). All Power tools shall be equipped with vacuum shrouds and fitted with HEPA filters at their air exhausts. Maintain and operate all vacuum shrouded power tools to collect generated debris. All new structural steel shall receive shop surface preparation and shop applied prime coating as specified in Special Note for Surface Preparation and Paint Application. Necessary touch up/repair of the shop applied prime coat on the new steel may be performed in the field. Intermediate and Finish coatings specified shall be field applied. All items necessary to complete painting as specified in this note shall be considered incidental to the unit price bid “Each” or “Linear Feet” for the specific steel repair.
- G. Prohibited Field Welding.** No field welding shall be permitted except where specified for bridge handrail repair.
- H. Residual Lead.** Residual lead paint may be present. The Contractor is advised to take all necessary protective measures including worker safety and environmental regulations when performing surface preparation and other work. The Department will not consider any claims based on residual lead paint.

4. MEASUREMENT.

Vertical Member Repair.

Cross Bracing Repair ~ Type A, B and C.

Repair Truss Member ~ Type A, B and C.

Girder Repair.

The Department will measure the quantity for “Each” for each repair listed above.

Bridge Handrail Repair

The Department will measure the quantity in linear feet from end to end of bridge.

5. PAYMENT.

Vertical Member Repair ~ 025B00021N (24182EC)

Cross-Bracing Repair ~ Type A, B and C ~ 025B00021N (23301EC)

Repair Truss Member ~ Type A, B and C ~ 025B00021N (23304EC)

Girder Repair ~ 025B00055N (23070NN)

Payment at the contract unit price for “Each” is full compensation for removing specified existing materials, furnishing and installing the new specified materials and all incidental material as specified for each repair listed above.

Bridge Handrail Repair ~ 025B00021N (20377EC)

Payment at the contract unit price per “linear foot” is full compensation for removing specified existing materials, furnishing and installing the new specified materials and all incidental material as specified for bridge handrail repair.

SPECIAL NOTE FOR JOINT SEAL REPLACEMENT

1. **DESCRIPTION.** Perform all work in accordance with the Kentucky Transportation Cabinet, Department of Highway's Standard Specifications for Road and Bridge Construction and applicable Supplemental Specifications, the Standard Drawings, (current editions), this Note and Attached Detailed Drawings. Section references are to the Standard Specifications. This work consists of the following: (1) Furnish all labor, materials, tools, and equipment; (2) Remove existing joint seal; (3) Install joint seal as specified (4) Maintain and control traffic; and (5) Any other work specified as part of this contract.
2. **MATERIALS.**
 - A. **Expansion Joint Seals.**
3" ~ DS Brown V-300, SSI SES-300, Watson Bowman Acme FS-300 or BEJS EMSEAL (3").
3. **CONSTRUCTION.**
 - A. **Remove Existing Materials.**
Joints: Remove the existing seal. Armored edges to remain.
 - B. **New Joint Material.** Use a system listed in 2. Materials to reseal joints. Install as recommended from the manufacture. Provide the engineer with the manufactures documents for installation
 - C. **Verifying Field Conditions.** The Contractor shall field verify all joint openings, locations and manufacture before ordering any material. New material that is unsuitable due to variation in existing structure shall be replaced at the Contractors expense.
4. **MEASUREMENT.**
 - A. **JOINT SEAL REPLACEMENT.** The Department will measure the quantity in linear feet from gutter line to gutter line along the centerline of the joint. The Department will not measure the portion of the new seal extending through the barrier. The portion of the joint seal extending through the barriers will be considered incidental.
5. **PAYMENT.**
 - A. **JOINT SEAL REPLACEMENT (23386EC)** - Payment at the contract unit price per linear foot is full compensation for removing specified existing materials, furnishing and installing the new specified system, and all incidental items necessary to complete the work within the specified pay limits as specified.

SPECIAL NOTE FOR MAINTAIN AND CONTROL TRAFFIC

All lane closures on this project shall be in accordance with **Kentucky Department of Highways Standard Specifications and Standard Drawings Nos. TTC-115, TTC 125, TTC-135 and the FHWA Manual for Uniform Traffic Control Devices (Current Editions)**. No lane closures will be permitted on holidays or holiday weekends. No work will be conducted over unprotected traffic at any location. The contractor must submit a traffic control plan for review and approval by the KYTC Engineer 14 days prior to the Pre-Construction Conference.

EMERGENCY REPAIRS AND COORDINATION WITH OTHER CONTRACTS

In the event it becomes necessary to make emergency repairs at this project by state forces or by other outside contractors, the (painting) contractor agrees to alter his work pattern as directed by the engineer so as not to interfere with the emergency work. The contractor shall be required to coordinate his efforts with those of any other contractor in the construction area.

TRAFFIC CONTROL DEVICES

The contractor will be required to furnish all traffic control devices whenever his operations endanger or interfere with vehicular traffic as determined by the engineer. The contractor shall furnish any additional traffic control devices necessary to protect traffic and his workmen. Any costs associated with the added traffic control devices (including arrow boards) shall be incidental to the contract lump sum amount for "maintain and control traffic." Placement of all devices for lane closures shall start and proceed in the direction of flow of traffic. Removal of devices shall start at the end of the construction area and proceed toward oncoming traffic. The contractor shall provide for the installation of all necessary traffic control devices before beginning work and their immediate removal as soon as work is suspended or completed. During the fully operational periods, when no lane closures are permitted, all equipment shall be totally removed from the job site. Traffic control signs shall be removed or covered (if left in a curb lane). **Only barrels shall be used for lane closures. No cones will be permitted.**

VEHICLES

The contractor's vehicles shall always move with and not across or against the flow of traffic. Vehicles shall enter or leave work areas in a manner that will not be hazardous to or interfere with normal roadway traffic. Vehicles shall not park or stop except within designated work areas.

Personal vehicles will not be permitted to park within the state right-of-way. The contractor's vehicles will be prohibited from crossing the roadway and all pedestrian movement of the contractor's personnel on the roadway will be limited to within the closed work areas.

MIMIMUM VERTICAL CLEARANCES

A minimum vertical clearance of **16'-0"** shall maintained for any rigging and containment materials left in place above traffic. This minimum vertical clearance must be signed. The Contractor shall notify the Cabinet's Department of Motor Vehicle Oversize Permits Section for height and width restrictions when any rigging and containment is in place with minimal clearance.

ROLLING ROAD BLOCKS

Rolling roadblocks will be permitted for rigging and containment installation/removal. When using rolling road blocks the Contractor shall employ one vehicle per lane including ramps as necessary, in one direction at a predetermined time and predetermined speed as directed by the Engineer. There shall be no stopping of the rolling roadblock. Prior to instituting such the roadway ahead shall be cleared of traffic as directed by the Engineer. The area of influence shall be sealed off (all on-ramps or access intersection closed) by use of flaggers and or Contractor's vehicles. The purpose is to seal off a certain work area and/or work function as designated in the notes so that the Contractor can perform certain work without any hazard to traffic. The rolling roadblock shall prevent any other vehicles at a slower speed than normal and forcing all vehicles to follow behind the Contractor's vehicles at their predetermined speed. Rolling roadblock shall only be used during specified hours for each bridge as directed by the Engineer. Variable message boards shall be required to be in place with an advanced warning message for the potential queue due to the rolling roadblock.

EQUIPMENT STAGING IN SHOULDERS AND/OR GORE AREAS

Equipment staging will be permitted in the shoulders and/or gore areas. Any non-movable equipment (trailers, etc.) should be located outside of the clear zone. The Contractor shall be responsible for any base material to park equipment on in the median and/or gore areas. This material must be removed and site restored to original condition as directed by the Engineer upon completion of the project.

TEMPORARY CONCRETE BARRIERS (025B00055N)

Staging in shoulders specified shall require temporary Concrete Barriers 9t (**NO ALTERNATIVES ALLOWED**) shall be used to protect work area in the shoulder closure. All temporary barrier for shoulder closures shall be used in accordance with Standard Drawing TTC-135 C.E. All other applications of temporary barrier shall use required end treatment. If not utilizing end treatment on shoulder, wall that is flared should not drop off with existing shoulder break but should sit on a graded pad in case of impact and vehicle does not hit wall too high. Temporary Concrete Barriers shall remain the Contractor's property and shall be removed from the construction site upon completion of construction. Cost of temporary concrete barrier 9t shall be considered incidental to the "Lump Sum" Bid for Maintain and Control Traffic. The Contractor shall be responsible for any base material to park equipment on. This material must be removed and site restored to original condition as directed by the Engineer upon completion of the project.

VEHICULAR PLATFORM USE

Should the use any vehicular platform methods and equipment to complete work with specified maintenance of traffic, the Contractor must submit their deployment plan to the use vehicular platform methods with the required traffic control plan and rigging and containment design submittal.

LAW ENFORCEMENT OFFICER (025B00055N)

Law enforcement officers will be required to be furnished on the project at any time the traffic is reduced to one lane. The contractor will be required to establish an agreement with a local law enforcement agency to provide an officer and police cruiser to be used to warn traffic on lane closures and stopped traffic ahead. The contractor will be responsible to reimburse the agency of the cost for this service. This requirement is solely for the intent of warning traffic of a potential danger ahead and not for the purpose of issuance of traffic violations. The officer should however have the authority to issue citations if necessary and at his discretion. Patrolling for speeding and issuance of double fines citations should be performed by a separate officer and the contractor will not be required to reimburse the agency for that operation. **No direct payment will be made** for the providing of law enforcement officers and will be consider **incidental** to “Maintain and Control Traffic”.

MISC.

The Contractor shall reduce the speed limit to **55 MPH** in areas signed for 70 MPH in and approaching the work zones unless otherwise noted.

The use of Double Fine Zones may be used at the Contractor’s discretion.

The Engineer may elect to use Variable Message Boards when necessary.

025B00021N

Maintain one usable 10 foot minimum lane. Flagging or traffic signals shall be used. If traffic signals are used the Contractor shall use flagging to minimize impact on school bus traffic when school is in session. The Contractor shall be responsible for establishing the dates and times when school bus traffic will impact the job site. The Contractor will be permitted to briefly close the structure to traffic using flagging to move any **equipment that exceeds load rating only**. (See Special Note for Weight Limits on Structure) across the structure as directed by the Engineer. The equipment must be centered on the structure and shall not exceed 2 times the load rating for the structure.

025B00055N

MP 9000 (Bridge Above)

A temporary lane reduction will be permitted for heat straightening operations and rigging and containment installation/removal. One 12-foot usable lane shall be maintain. All lane reductions shall be removed when not working.

I-64 (Road below)

Single closures maintaining a **12’** minimum driving lane in each direction, double lane closures maintain a minimum **16’** driving land each direction, shoulder closures and rolling road blocks will be permitted. All work requiring single and double lane closures and/or rolling road blocks shall be done during the hours of 6:00 PM and 6:00 AM. Equipment staging will be permitted in the shoulders and/or gore areas. Shoulder closures will be permitted to remain for all work. Contrary to the standard specification a **Liquidated Damage of \$5000.00 per hour or portion of an hour if double lane closure left in place past 6 AM.**

MEASUREMENT.

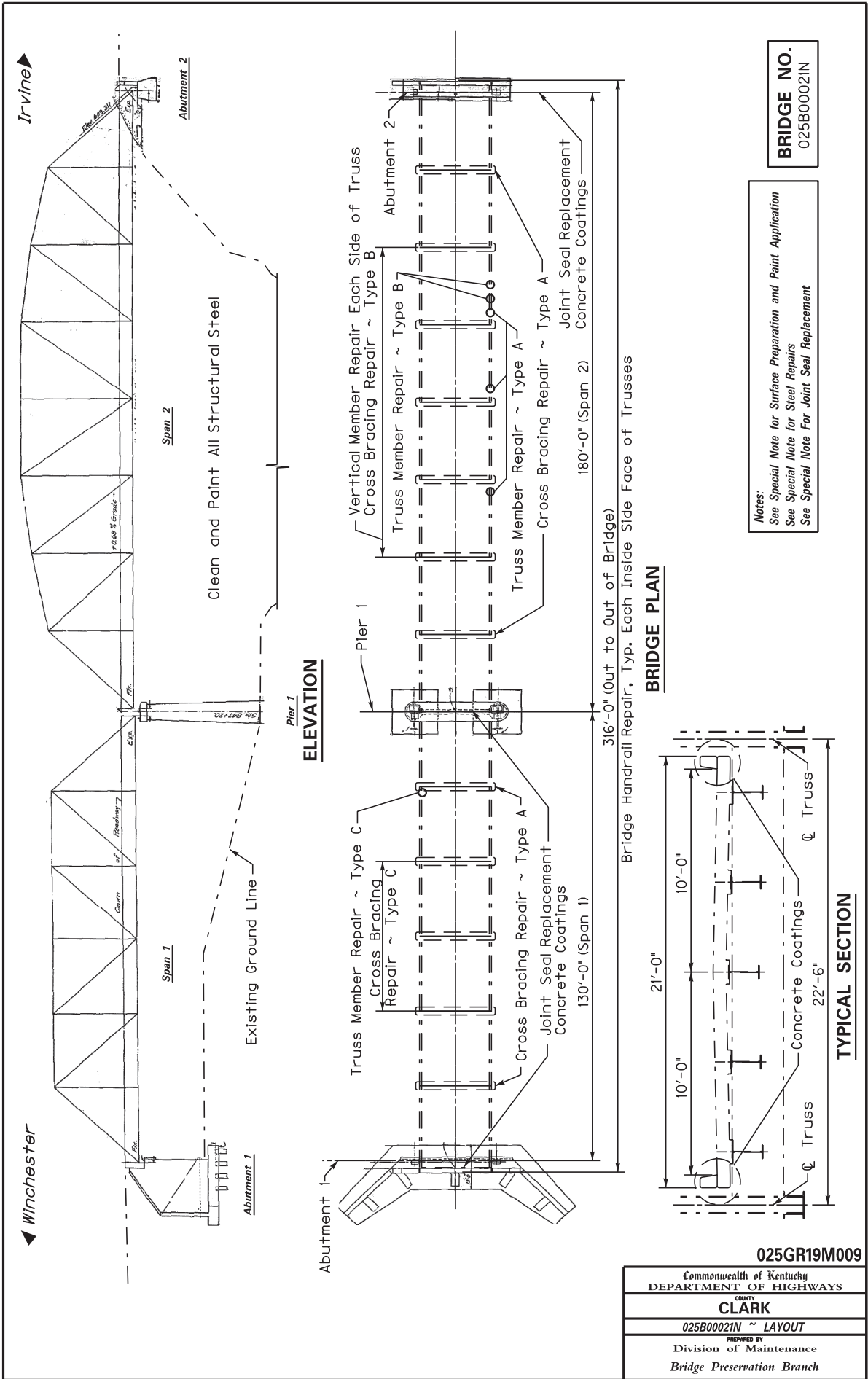
A. Maintain and Control Traffic: The Department will measure the quantity as “Lump Sum”.

B. Portable Changeable Message Sign: The Department will measure the quantity for “Each”.

PAYMENT.

A. Maintain and Control Traffic (02650): Payment of the contract lump sum amount for "maintain and control traffic" shall be full compensation for all items necessary to maintain and control traffic as specified for this project. All traffic control items shall remain the property of the contractor when the work is complete.

B. Portable Changeable Message Sign (02671): Payment at “each” shall be full compensation to furnish, install, maintain and remove all portable message signs as specified.



BRIDGE NO.
025B00021N

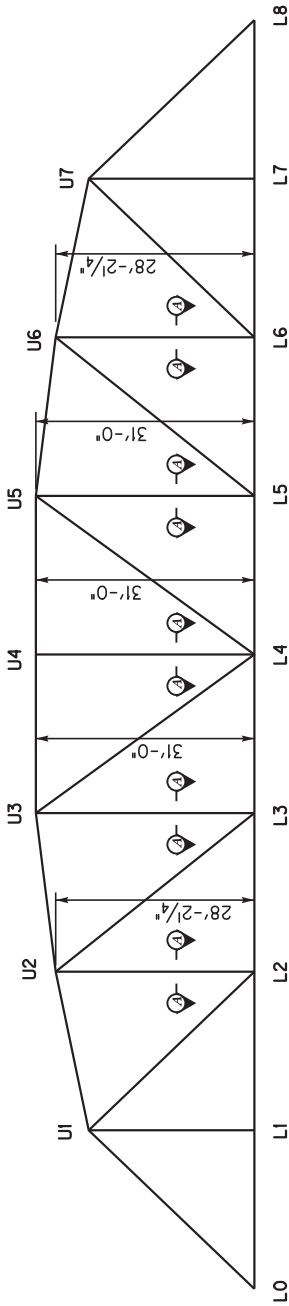
Notes:
See Special Note for Surface Preparation and Paint Application
See Special Note for Steel Repairs
See Special Note For Joint Seal Replacement

BRIDGE PLAN

TYPICAL SECTION

025GR19M009

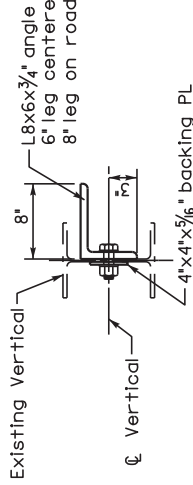
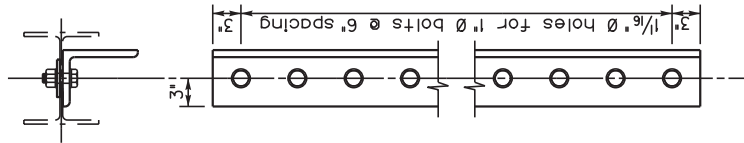
Commonwealth of Kentucky DEPARTMENT OF HIGHWAYS
CLARK COUNTY
025B00021N ~ LAYOUT
PREPARED BY Division of Maintenance Bridge Preservation Branch



VERTICAL MEMBER REPAIR ELEVATION

Verticals are bent max. ~2" from sway brace impact.

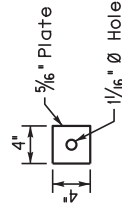
North →



SECTION A-A

L8x6x³/₄" angle is to be 23'-0" long @ L2-U2 & L6-U6 & opp. truss (4 total)
L8x6x³/₄" angle is to be 26'-0" long @ U3-L3 to U5-L5 & opp. truss (6 total)
L8x6x³/₄" angle will extend from @ or near top of vertical to @ or near deck level

Construction method:
Start at the bottom of the angle.
Drill the bottom hole and tighten that bolt down enough to bring all the plates in contact with each other before drilling the next hole up.
(So the plates can stay in contact all the way up)



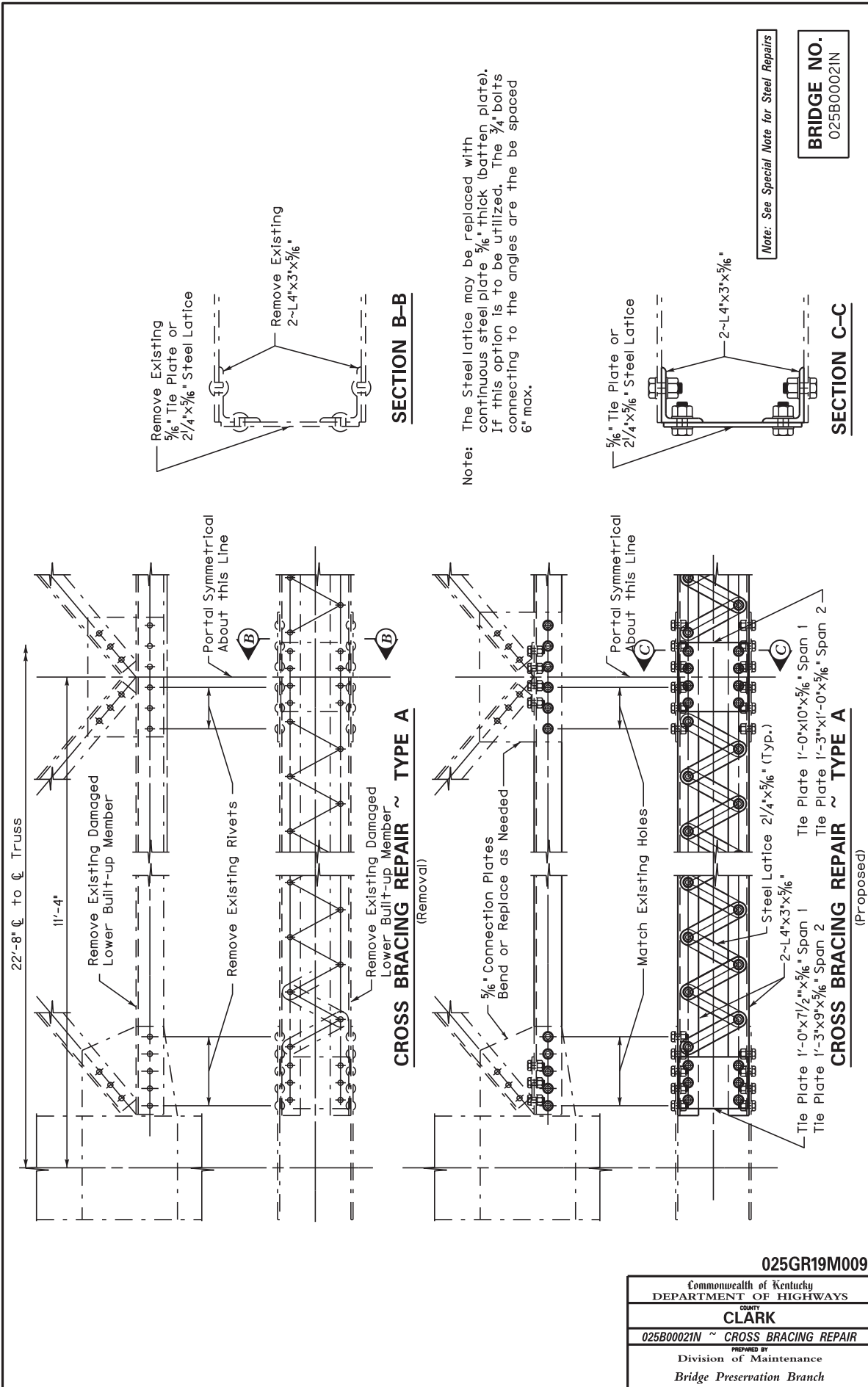
BACKING PLATES

BRIDGE NO.
025B00021N

Note: See Special Note for Steel Repairs

025GR19M009

Commonwealth of Kentucky DEPARTMENT OF HIGHWAYS
CLARK
025B00021N ~ VERTICAL MEMBER REPAIR
Division of Maintenance Bridge Preservation Branch



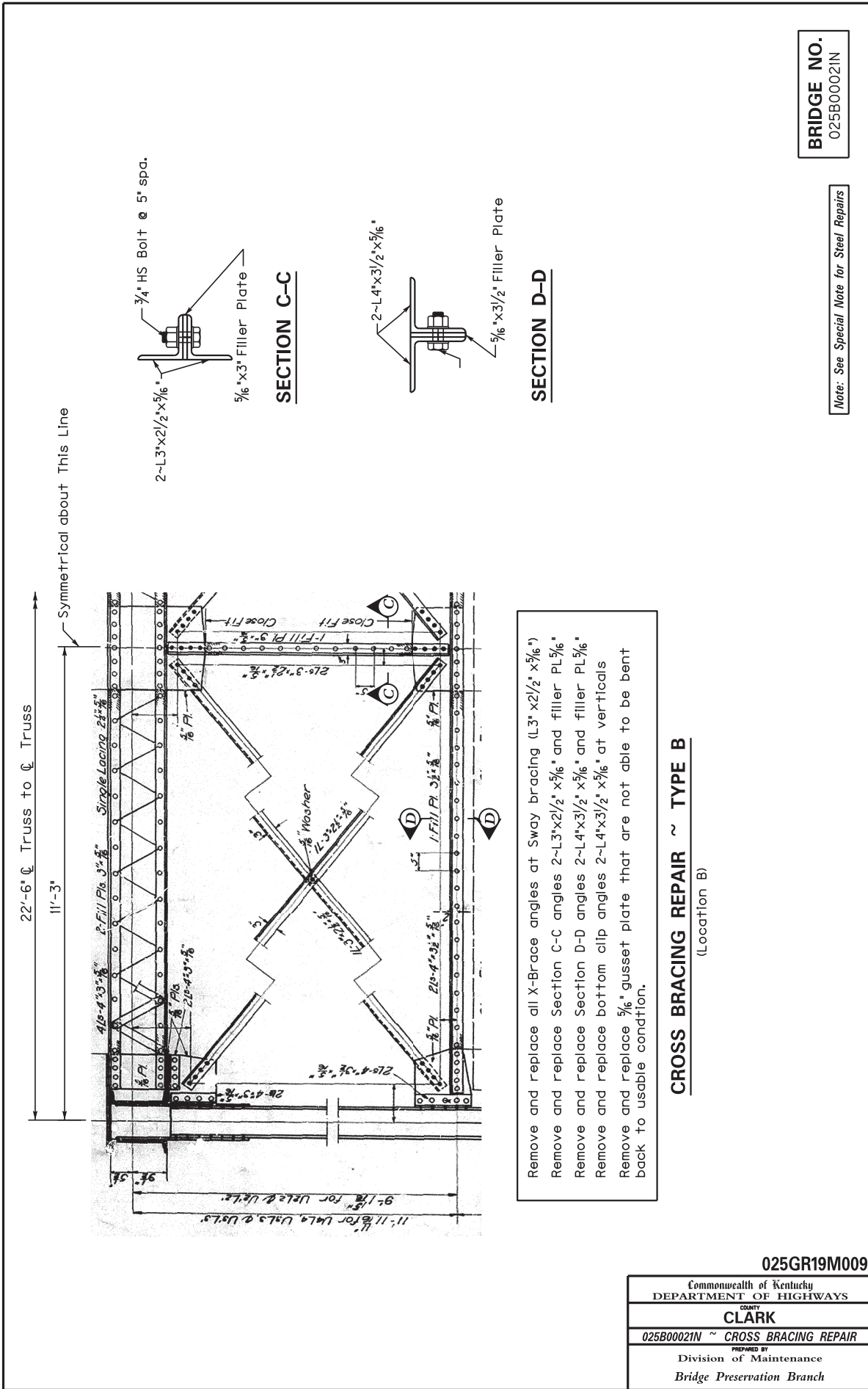
025GR19M009

Commonwealth of Kentucky
DEPARTMENT OF HIGHWAYS

CLARK COUNTY

025B00021N ~ CROSS BRACING REPAIR

PREPARED BY
Division of Maintenance
Bridge Preservation Branch



BRIDGE NO.
025B00021N

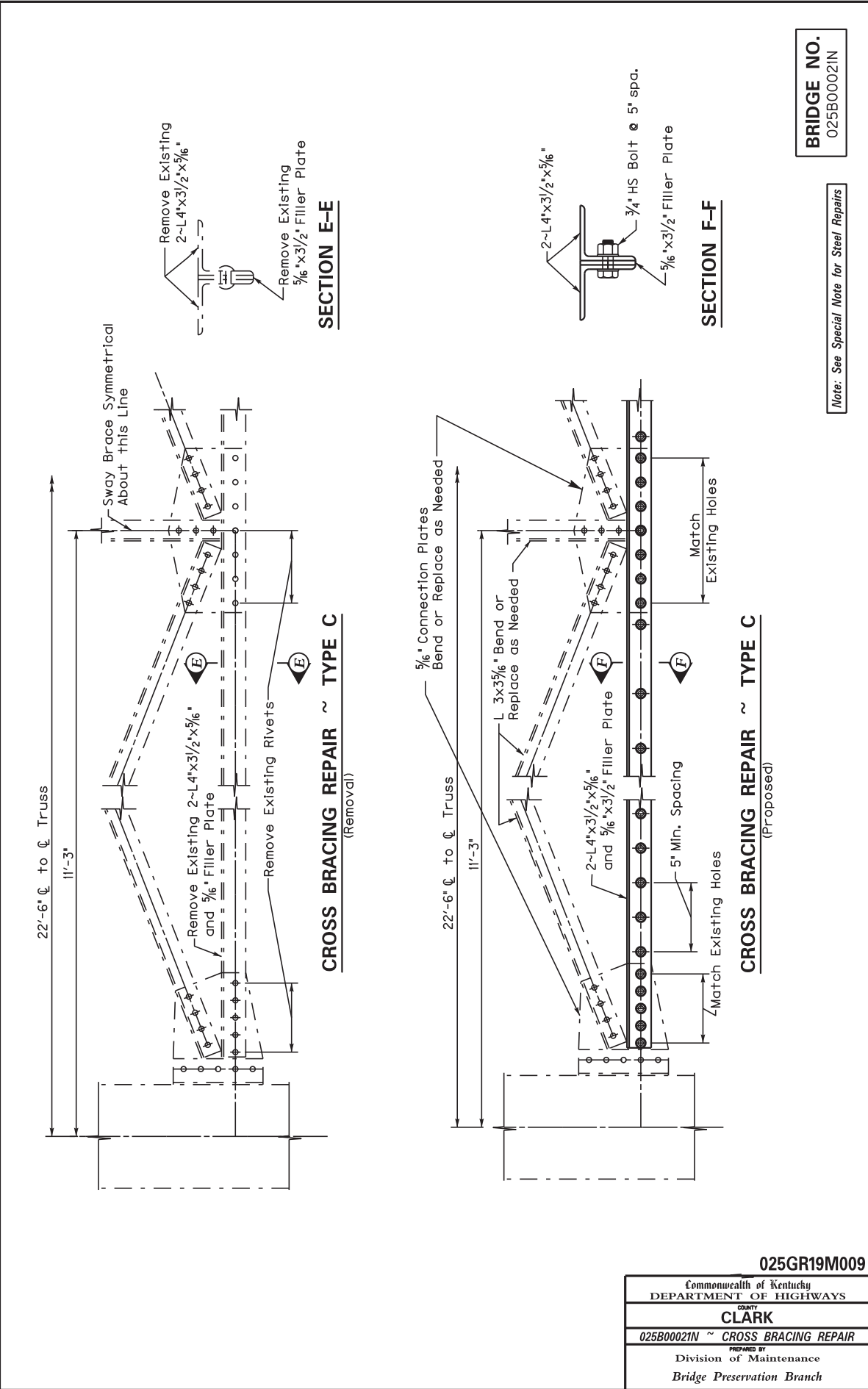
Note: See Special Note for Steel Repairs

CROSS BRACING REPAIR ~ TYPE B
(Location B)

Remove and replace all X-Brace angles at Sway bracing (L3" x 2 1/2" x 5/16")
 Remove and replace Section C-C angles 2~L3" x 2 1/2" x 5/16" and filler PL 5/16"
 Remove and replace Section D-D angles 2~L4" x 3 1/2" x 5/16" and filler PL 5/16"
 Remove and replace bottom clip angles 2~L4" x 3 1/2" x 5/16" at verticals
 Remove and replace 5/16" gusset plate that are not able to be bent back to usable condition.

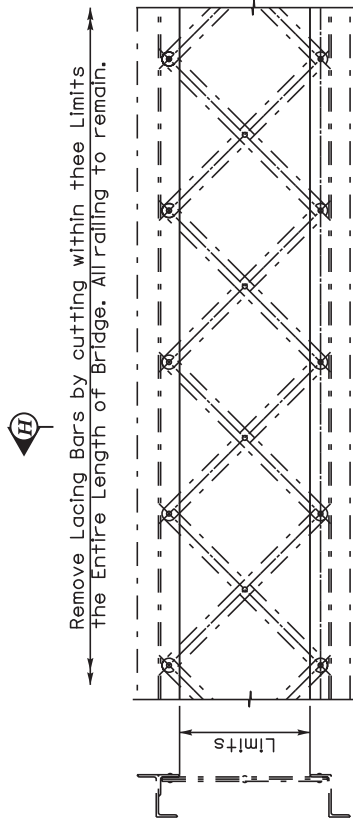
025GR19M009

Commonwealth of Kentucky DEPARTMENT OF HIGHWAYS	
CLARK COUNTY	
025B00021N ~ CROSS BRACING REPAIR	
PREPARED BY Division of Maintenance Bridge Preservation Branch	

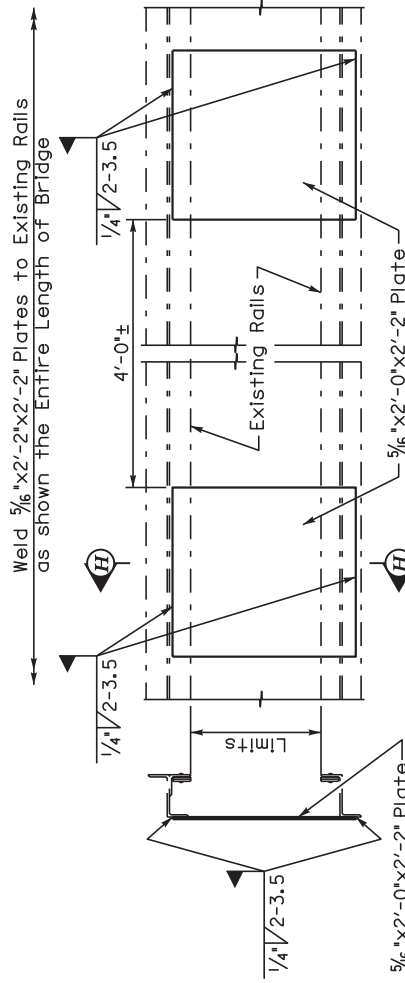


025GR19M009

Commonwealth of Kentucky DEPARTMENT OF HIGHWAYS
CLARK COUNTY
025B00021N ~ CROSS BRACING REPAIR
PREPARED BY Division of Maintenance Bridge Preservation Branch



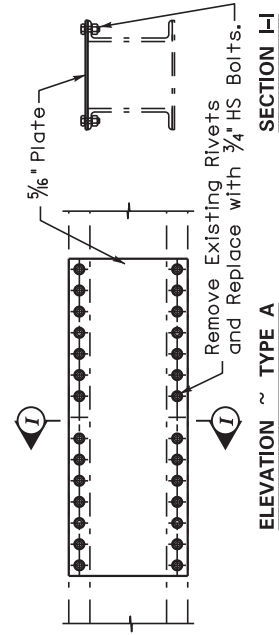
ELEVATION
BRIDGE HANDRAIL REPAIR
(Existing)



ELEVATION
BRIDGE HANDRAIL REPAIR
(Proposed)

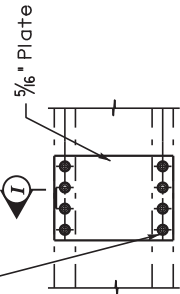
BRIDGE NO.
025B00021N

Note: See Special Note for Steel Repairs

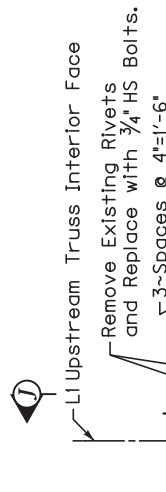


SECTION I-I

Remove Existing Rivets and Replace with $\frac{3}{4}$ " HS Bolts.

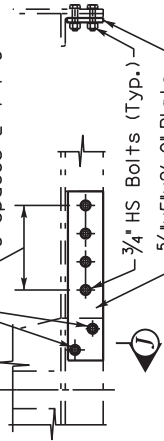


ELEVATION ~ TYPE B



SECTION J-J

ELEVATION ~ TYPE C

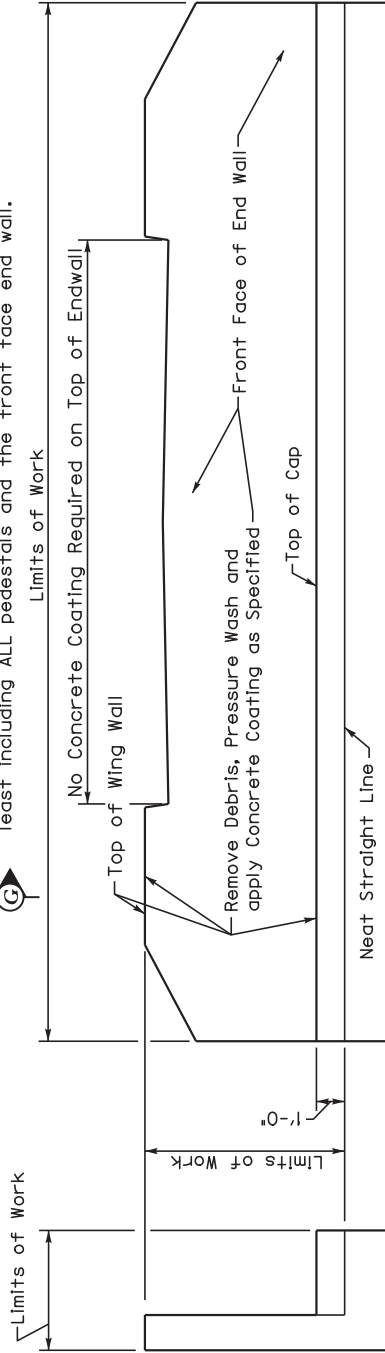


REPAIR TRUSS MEMBER

025GR19M009

Commonwealth of Kentucky DEPARTMENT OF HIGHWAYS
CLARK COUNTY
025B00021N ~ MISC. STEEL REPAIR
Division of Maintenance Bridge Preservation Branch

ABUTMENTS:
Surfaces of the abutments shall be have debris removed, pressure washed and have concrete coating applied as specified, this includes ALL horizontal sur-faces of the cap and ALL vertical surfaces above cap to 1 foot below the top of cap or to the ground line whichever is the least including ALL pedestals and the front face end wall.

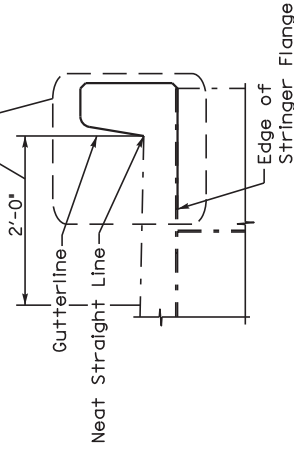


ABUTMENT ELEVATION

SECTION G-G

ALL faces of parapet walls the entire length of bridge including the end bent/abutment wing walls shall have debris removed, pressure washed and have concrete coating applied as specified.

Remove debris and clean gutters in these limits the entire length of the bridge including end bent wingwalls.

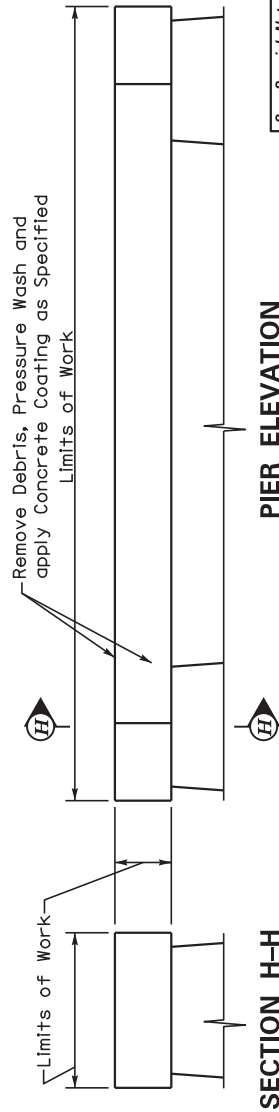


SECTION THROUGH PAPAPET

BRIDGE NO.
025B00021N

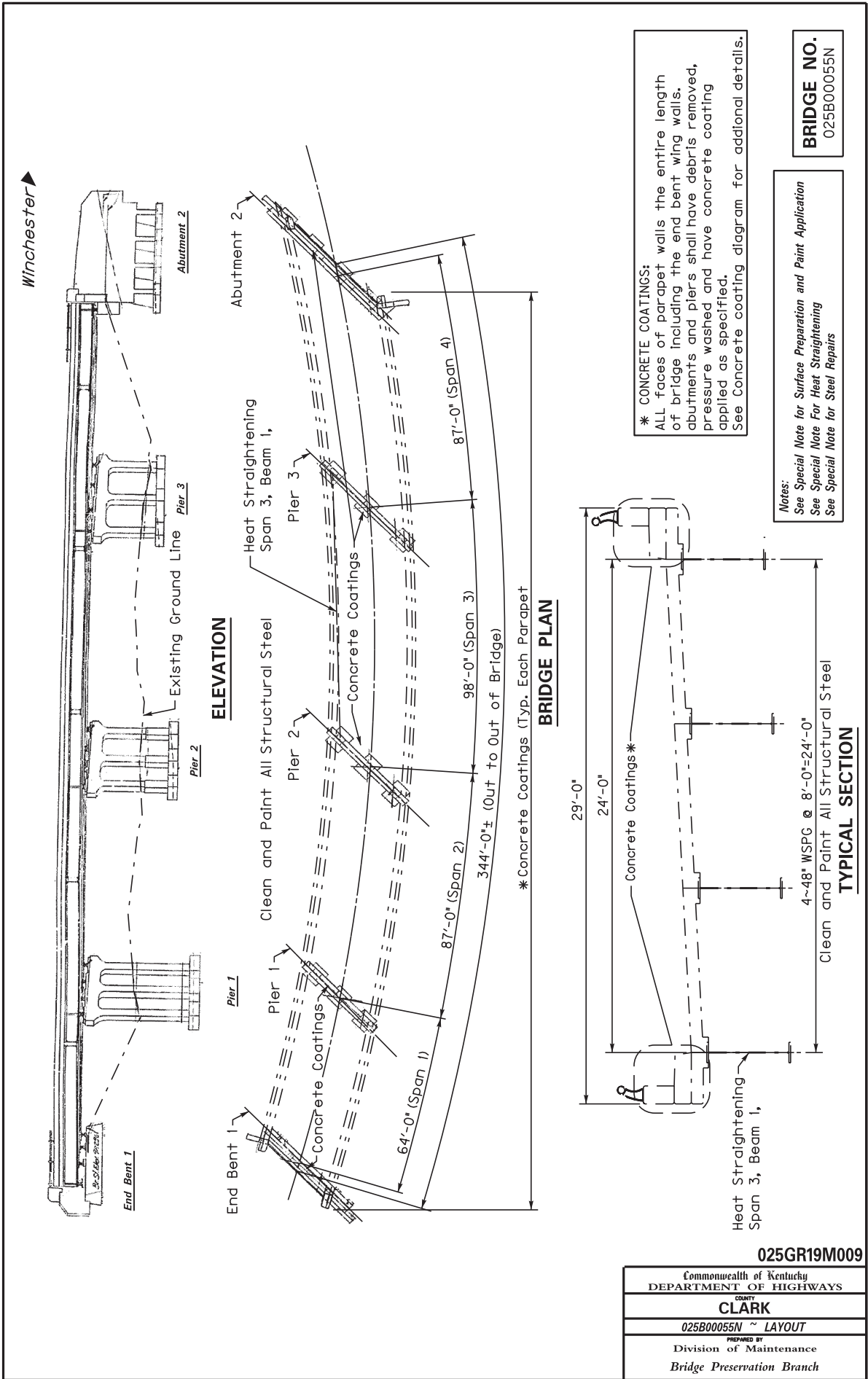
See Special Note for Surface Preparation and Paint Application

PIER:
Surfaces of the pier shall be have debris removed, pressure washed and have concrete coating applied as specified, this includes ALL pedestals.



025GR19M009

Commonwealth of Kentucky DEPARTMENT OF HIGHWAYS	
CLARK COUNTY	
025B00021N ~ CONCRETE COATINGS	
PREPARED BY Division of Maintenance Bridge Preservation Branch	



025GR19M009

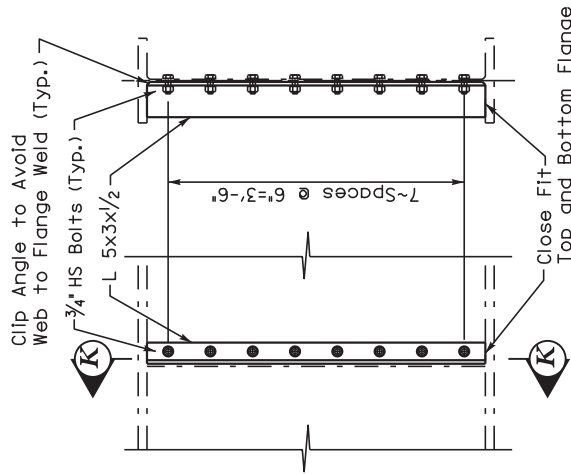
Commonwealth of Kentucky DEPARTMENT OF HIGHWAYS
CLARK COUNTY
025B00055N ~ LAYOUT
PREPARED BY Division of Maintenance Bridge Preservation Branch

Remove Existing Stiffener and Replace
See Girder Repair Detail



7'-0"±

HEAT STRAIGHTENING
(Span 3, Beam 1)



ELEVATION

GIRDER REPAIR

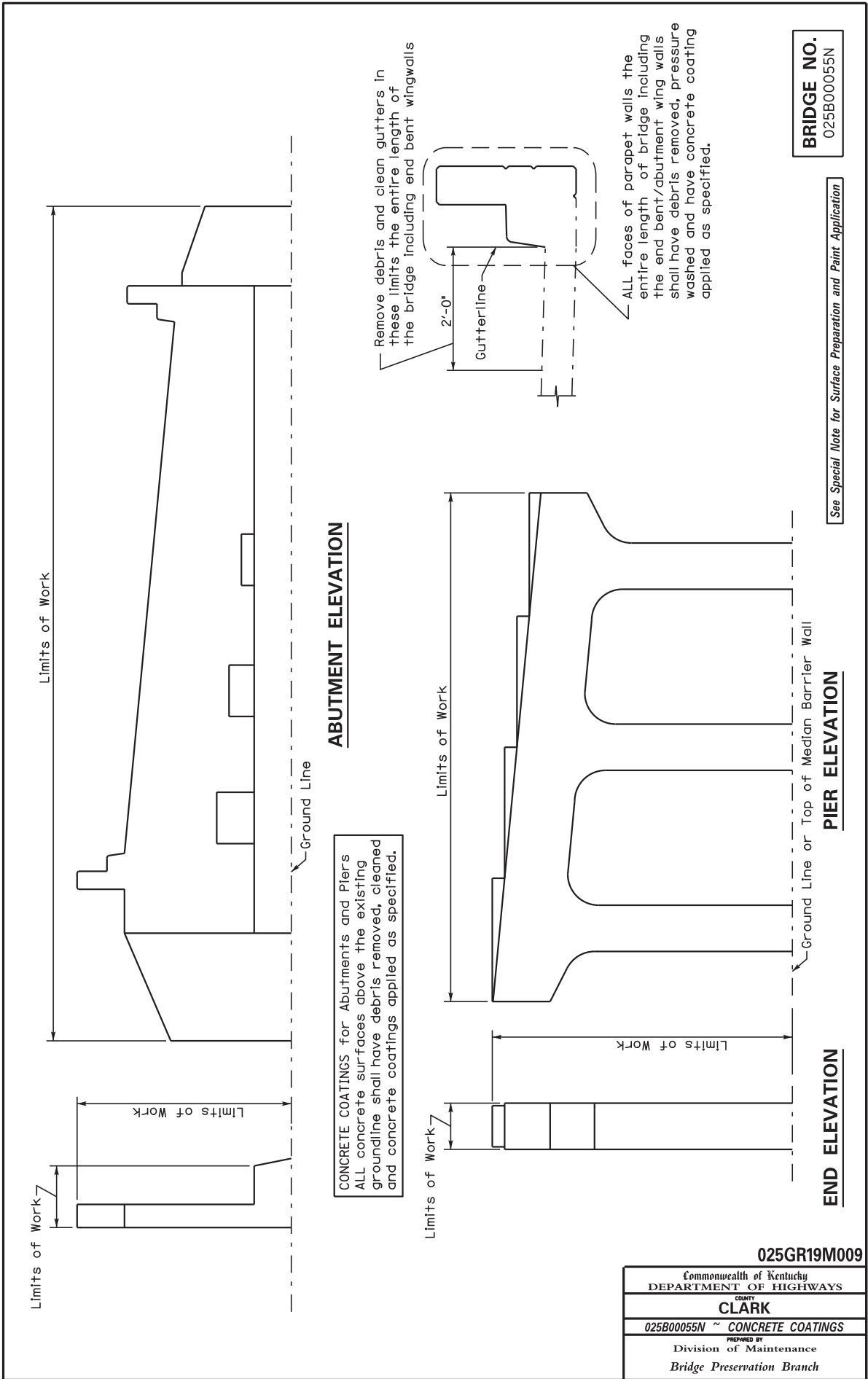
SECTION K-K

Notes:
See Special Note For Heat Straightening
See Special Note for Steel Repairs

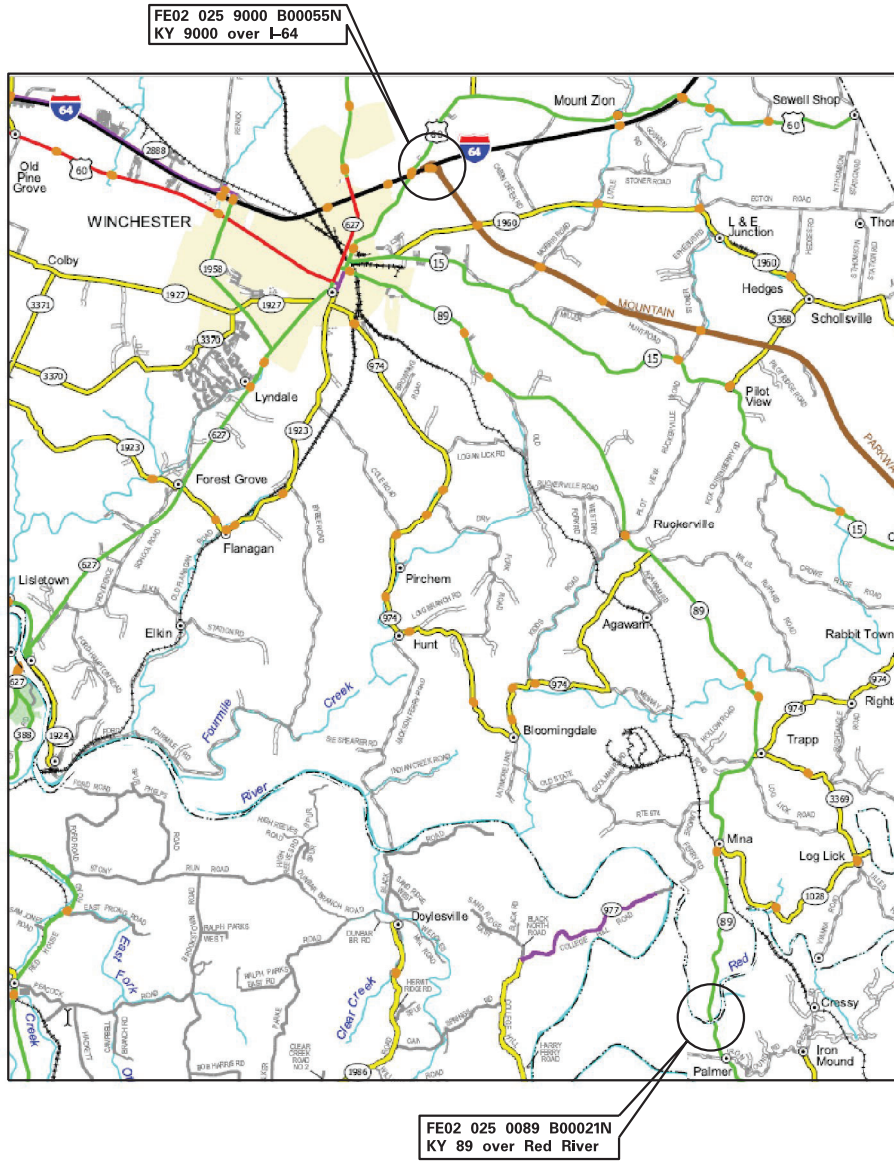
BRIDGE NO.
025B00055N

025GR19M009

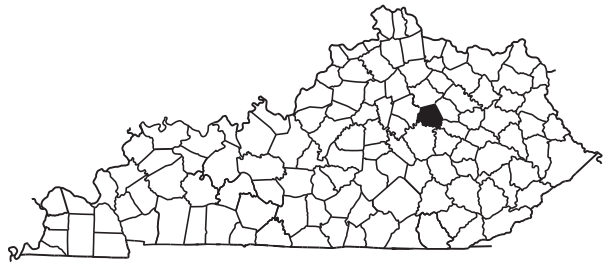
Commonwealth of Kentucky DEPARTMENT OF HIGHWAYS
CLARK
025B00055N ~ HEAT STRAIGHTENING
PREPARED BY Division of Maintenance Bridge Preservation Branch



025GR19M009	
Commonwealth of Kentucky DEPARTMENT OF HIGHWAYS	
COUNTY CLARK	
025B00055N ~ CONCRETE COATINGS	
PREPARED BY Division of Maintenance Bridge Preservation Branch	



LOCATION MAP - CLARK COUNTY



025GR19M
Commonwealth of Kentucky DEPARTMENT OF HIGHWAYS
CLARK COUNTY
LOCATION MAP
PREPARED BY Division of Maintenance Bridge Preservation Branch



Matthew G. Bevin
Governor

COMMONWEALTH OF KENTUCKY
TRANSPORTATION CABINET
Frankfort, Kentucky 40622
www.transportation.ky.gov/

Greg Thomas
Secretary

Asbestos Inspection Report

To: Tom Mathews

District: Central Office

Date: December 18, 2018

Conducted By: O'Dail Lawson

Report Prepared By: O'Dail Lawson

Project and Structure Identification

Project Number: Clark CID 192950

Structure ID: 025B00021N

Structure Location: KY-89 (Irvine Road) over the Red River

Sample Description: The samples collected were negative for asbestos.

Inspection Date: December 12, 2018

Results and Recommendations

The results of the samples collected were negative for the presence of asbestos above 1%.
No abatement is required at this time.

It is recommended that this report accompany the 10-Day Notice of Intent for Demolition ([DEP7036 Form](#)) which is to be submitted to the Kentucky Division of Air Quality prior to abatement, demolition, or renovation of any building or structure in the Commonwealth.



ENVIRONMENTAL TRAINING CONCEPTS, INC

P.O. Box 99603 Louisville, KY 40269
(502)640-2951

Certification Number: ETC-AIR-060518-00303

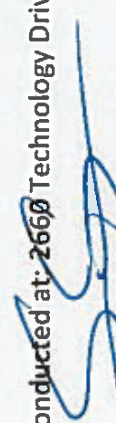
O'Dail Lawson

has on 06-05-2018, attended and successfully completed the requirements and passed the examination with a score of 70% of better on the entitled course.

ASBESTOS INSPECTOR REFRESHER

Training was in accordance with 40 CFR Part 763 (AHERA) approved by the Commonwealth of Kentucky, the Indiana Department of Environmental Management, Tennessee Department of Environment & Conservation and the Arkansas Department of Environmental Quality. The above student received requisite training for Asbestos Accreditation under Title II of the Toxic Substance Act (TSCA).

Conducted at: ~~2660~~ Technology Drive, Louisville, KY


Name - Training Manager

Expiration Date: ~~06-05~~-2019


Name - Instructor

MATERIAL SUMMARY

CONTRACT ID: 192950

025GR19M009 - FE02

MB02500891901

CLARK COUNTY 025B00021N WINCHERSTER ROAD MP 00.01
KY 89 OVER RED RIVER BRIDGE PAINTING & CLEANING.

Project Line No	Bid Code	DESCRIPTION	Quantity	Unit
0005	02650	MAINTAIN & CONTROL TRAFFIC - - 025B00021N	1.00	LS
0010	02671	PORTABLE CHANGEABLE MESSAGE SIGN - - 025B00021N	2.00	EACH
0015	08434	CLEAN & PAINT STRUCTURAL STEEL - - 025B00021N	1.00	LS
0020	23949EC	BRIDGE CLEANING & PREVENTIVE MAINTENANCE - - 025B00021N	1.00	LS
0025	02568	MOBILIZATION	1.00	LS
0030	02569	DEMOBILIZATION	1.00	LS
0035	24182EC	VERTICAL MEMBER REPAIR - - 025B00021N	10.00	EACH
0040	23301EC	CROSS-BRACING REPAIR - - 025B00021N TYPE A	4.00	EACH
0045	23301EC	CROSS-BRACING REPAIR - - 025B00021N TYPE B	5.00	EACH
0050	23301EC	CROSS-BRACING REPAIR - - 025B00021N TYPE C	3.00	EACH
0055	23386EC	JOINT SEAL REPLACEMENT - - 025B00021N	60.00	LF
0060	23304EC	REPAIR TRUSS MEMBER - - 025B00021N TYPE A	3.00	EACH
0065	20377EC	BRIDGE HANDRAIL REPAIR - - 025B00021N	632.00	LF
0070	23304EC	REPAIR TRUSS MEMBER - - 025B00021N TYPE B	2.00	EACH
0075	23304EC	REPAIR TRUSS MEMBER - - 025B00025N TYPE C	1.00	EACH

CONTRACT ID: 192950

025GR19M009 - FE02

MB02590001901

CLARK COUNTY 025B00055N MOUNTAIN PARIKWAY MP 00.19
MP 9000 OVER I-64 BRIDGE PAINTING & CLEANING.

Project Line No	Bid Code	DESCRIPTION	Quantity	Unit
0080	02650	MAINTAIN & CONTROL TRAFFIC - - 025B00055N	1.00	LS
0085	02671	PORTABLE CHANGEABLE MESSAGE SIGN - - 025B00055N	3.00	EACH
0090	08434	CLEAN & PAINT STRUCTURAL STEEL - - 025B00055N	1.00	LS
0095	23594EC	HEAT STRAIGHTENING - - 025B00055N	1.00	LS
0100	23949EC	BRIDGE CLEANING & PREVENTIVE MAINTENANCE - - 025B00055N	1.00	LS
0105	02568	MOBILIZATION	1.00	LS
0110	02569	DEMOBILIZATION	1.00	LS
0115	23070NN	GIRDER REPAIR - - 025B00055N	1.00	EACH

**SPECIAL NOTE FOR PRE-BID CONFERENCE
DISTRICT 7
CID Number 192950**

The Department will conduct a Mandatory Pre-Bid Conference for the subject project on **Wednesday, January 16, 2019 at 10:00 AM Eastern Time at;**

**Department of Highways, District 7 Office
800 Newtown Court
Lexington, KY 40511
Phone: (859) 246-2355**

Any company that is interested in bidding on the subject project or being part of a joint venture shall be represented at the conference by at least **one person of sufficient authority to bind the company**. No individual can represent more than one company. At the conference a roster shall be taken of the representatives present. **Only companies represented at the conference will be eligible to have their bids opened at the date of letting.**

The purpose of the conference is to familiarize all prospective bidders with the contract requirements within the scope of the contract.

Department of Highways officials present at the conference will answer questions concerning the projects.

PART II
SPECIFICATIONS AND STANDARD DRAWINGS

SPECIFICATIONS REFERENCE

Any reference in the plans or proposal to previous editions of the *Standard Specifications for Road and Bridge Construction* and *Standard Drawings* are superseded by *Standard Specifications for Road and Bridge Construction, Edition of 2012* and *Standard Drawings, Edition of 2016*.

SUPPLEMENTAL SPECIFICATIONS

The contractor shall use the Supplemental Specifications that are effective at the time of letting.
The Supplemental Specifications can be found at the following link:

<http://transportation.ky.gov/Construction/Pages/Kentucky-Standard-Specifications.aspx>

PART III

EMPLOYMENT, WAGE AND RECORD REQUIREMENTS

**TRANSPORTATION CABINET
DEPARTMENT OF HIGHWAYS**

**LABOR AND WAGE REQUIREMENTS
APPLICABLE TO OTHER THAN FEDERAL-AID SYSTEM PROJECTS**

- I. Application
- II. Nondiscrimination of Employees (KRS 344)

I. APPLICATION

1. These contract provisions shall apply to all work performed on the contract by the contractor with his own organization and with the assistance of workmen under his immediate superintendence and to all work performed on the contract by piecework, station work or by subcontract. The contractor's organization shall be construed to include only workmen employed and paid directly by the contractor and equipment owned or rented by him, with or without operators.

2. The contractor shall insert in each of his subcontracts all of the stipulations contained in these Required Provisions and such other stipulations as may be required.

3. A breach of any of the stipulations contained in these Required Provisions may be grounds for termination of the contract.

3. If the contractor is in control of apprenticeship or other training or retraining, including on-the-job training programs, he shall not discriminate against an individual because of his race, color, religion, national origin, sex, disability or age forty (40) and over, in admission to, or employment in any program established to provide apprenticeship or other training.

4. The contractor will send to each labor union or representative of workers with which he has a collective bargaining agreement or other contract or understanding, a notice to be provided advising the said labor union or workers' representative of the contractor's commitments under this section, and shall post copies of the notice in conspicuous places available to employees and applicants for employment. The contractor will take such action with respect to any subcontract or purchase order as the administrating agency may direct as a means of enforcing such provisions, including sanctions for non-compliance.

Revised: January 25, 2017

II. NONDISCRIMINATION OF EMPLOYEES

**AN ACT OF THE KENTUCKY
GENERAL ASSEMBLY TO PREVENT
DISCRIMINATION IN EMPLOYMENT
KRS CHAPTER 344
EFFECTIVE JUNE 16, 1972**

The contract on this project, in accordance with KRS Chapter 344, provides that during the performance of this contract, the contractor agrees as follows:

1. The contractor shall not fail or refuse to hire, or shall not discharge any individual, or otherwise discriminate against an individual with respect to his compensation, terms, conditions, or privileges of employment, because of such individual's race, color, religion, national origin, sex, disability or age (forty and above); or limit, segregate, or classify his employees in any way which would deprive or tend to deprive an individual of employment opportunities or otherwise adversely affect his status as an employee, because of such individual's race, color, religion, national origin, sex, disability or age forty (40) and over. The contractor agrees to post in conspicuous places, available to employees and applicants for employment, notices to be provided setting forth the provisions of this nondiscrimination clause.

2. The contractor shall not print or publish or cause to be printed or published a notice or advertisement relating to employment by such an employer or membership in or any classification or referral for employment by the employment agency, indicating any preference, limitation, specification, or discrimination, based on race, color, religion, national origin, sex, or age forty (40) and over, or because the person is a qualified individual with a disability, except that such a notice or advertisement may indicate a preference, limitation, or specification based on religion, national origin, sex, or age forty (40) and over, or because the person is a qualified individual with a disability, when religion, national origin, sex, or age forty (40) and over, or because the person is a qualified individual with a disability, is a bona fide occupational qualification for employment.

EXECUTIVE BRANCH CODE OF ETHICS

In the 1992 regular legislative session, the General Assembly passed and Governor Brereton Jones signed Senate Bill 63 (codified as KRS 11A), the Executive Branch Code of Ethics, which states, in part:

KRS 11A.040 (7) provides:

No present or former public servant shall, within six (6) months following termination of his office or employment, accept employment, compensation, or other economic benefit from any person or business that contracts or does business with, or is regulated by, the state in matters in which he was directly involved during the last thirty-six (36) months of his tenure. This provision shall not prohibit an individual from returning to the same business, firm, occupation, or profession in which he was involved prior to taking office or beginning his term of employment, or for which he received, prior to his state employment, a professional degree or license, provided that, for a period of six (6) months, he personally refrains from working on any matter in which he was directly involved during the last thirty-six (36) months of his tenure in state government. This subsection shall not prohibit the performance of ministerial functions, including but not limited to filing tax returns, filing applications for permits or licenses, or filing incorporation papers, nor shall it prohibit the former officer or public servant from receiving public funds disbursed through entitlement programs.

KRS 11A.040 (9) states:

A former public servant shall not represent a person or business before a state agency in a matter in which the former public servant was directly involved during the last thirty-six (36) months of his tenure, for a period of one (1) year after the latter of:

- a) The date of leaving office or termination of employment; or
- b) The date the term of office expires to which the public servant was elected.

This law is intended to promote public confidence in the integrity of state government and to declare as public policy the idea that state employees should view their work as a public trust and not as a way to obtain private benefits.

If you have worked for the executive branch of state government within the past six months, you may be subject to the law's prohibitions. The law's applicability may be different if you hold elected office or are contemplating representation of another before a state agency.

Also, if you are affiliated with a firm which does business with the state and which employs former state executive-branch employees, you should be aware that the law may apply to them.

In case of doubt, the law permits you to request an advisory opinion from the Executive Branch Ethics Commission, 3 Fountain Place, Frankfort, Kentucky 40601; telephone (502) 564-7954.

Revised: January 27, 2017

Kentucky Equal Employment Opportunity Act of 1978

The requirements of the Kentucky Equal Employment Opportunity Act of 1978 (KRS 45.560-45.640) shall apply to this Contract. The apparent low Bidder will be required to submit EEO forms to the Division of Construction Procurement, which will then forward to the Finance and Administration Cabinet for review and approval. No award will become effective until all forms are submitted and EEO/CC has certified compliance. The required EEO forms are as follows:

- EEO-1: Employer Information Report
- Affidavit of Intent to Comply
- Employee Data Sheet
- Subcontractor Report

These forms are available on the Finance and Administration's web page under ***Vendor Information, Standard Attachments and General Terms*** at the following address:
<https://www.eProcurement.ky.gov>.

Bidders currently certified as being in compliance by the Finance and Administration Cabinet may submit a copy of their approval letter in lieu of the referenced EEO forms.

For questions or assistance please contact the Finance and Administration Cabinet by email at **finance.contractcompliance@ky.gov** or by phone at 502-564-2874.

EMPLOYEE RIGHTS UNDER THE FAIR LABOR STANDARDS ACT

THE UNITED STATES DEPARTMENT OF LABOR WAGE AND HOUR DIVISION

FEDERAL MINIMUM WAGE

\$7.25 PER HOUR

BEGINNING JULY 24, 2009

OVERTIME PAY At least 1½ times your regular rate of pay for all hours worked over 40 in a workweek.

CHILD LABOR An employee must be at least **16** years old to work in most non-farm jobs and at least **18** to work in non-farm jobs declared hazardous by the Secretary of Labor.

Youths **14** and **15** years old may work outside school hours in various non-manufacturing, non-mining, non-hazardous jobs under the following conditions:

No more than

- **3** hours on a school day or **18** hours in a school week;
- **8** hours on a non-school day or **40** hours in a non-school week.

Also, work may not begin before **7 a.m.** or end after **7 p.m.**, except from June 1 through Labor Day, when evening hours are extended to **9 p.m.** Different rules apply in agricultural employment.

TIP CREDIT Employers of “tipped employees” must pay a cash wage of at least \$2.13 per hour if they claim a tip credit against their minimum wage obligation. If an employee’s tips combined with the employer’s cash wage of at least \$2.13 per hour do not equal the minimum hourly wage, the employer must make up the difference. Certain other conditions must also be met.

ENFORCEMENT The Department of Labor may recover back wages either administratively or through court action, for the employees that have been underpaid in violation of the law. Violations may result in civil or criminal action.

Employers may be assessed civil money penalties of up to \$1,100 for each willful or repeated violation of the minimum wage or overtime pay provisions of the law and up to \$11,000 for each employee who is the subject of a violation of the Act’s child labor provisions. In addition, a civil money penalty of up to \$50,000 may be assessed for each child labor violation that causes the death or serious injury of any minor employee, and such assessments may be doubled, up to \$100,000, when the violations are determined to be willful or repeated. The law also prohibits discriminating against or discharging workers who file a complaint or participate in any proceeding under the Act.

ADDITIONAL INFORMATION

- Certain occupations and establishments are exempt from the minimum wage and/or overtime pay provisions.
- Special provisions apply to workers in American Samoa and the Commonwealth of the Northern Mariana Islands.
- Some state laws provide greater employee protections; employers must comply with both.
- The law requires employers to display this poster where employees can readily see it.
- Employees under 20 years of age may be paid \$4.25 per hour during their first 90 consecutive calendar days of employment with an employer.
- Certain full-time students, student learners, apprentices, and workers with disabilities may be paid less than the minimum wage under special certificates issued by the Department of Labor.

For additional information:



1-866-4-USWAGE

(1-866-487-9243) TTY: 1-877-889-5627



WWW.WAGEHOUR.DOL.GOV

PART IV
INSURANCE

INSURANCE

The Contractor shall procure and maintain the following insurance in addition to the insurance required by law:

- 1) Commercial General Liability-Occurrence form – not less than \$2,000,000 General aggregate, \$2,000,000 Products & Completed Aggregate, \$1,000,000 Personal & Advertising, \$1,000,000 each occurrence.
- 2) Automobile Liability- \$1,000,000 per accident
- 3) Employers Liability:
 - a) \$100,000 Each Accident Bodily Injury
 - b) \$500,000 Policy limit Bodily Injury by Disease
 - c) \$100,000 Each Employee Bodily Injury by Disease
- 4) The insurance required above must be evidenced by a Certificate of Insurance and this Certificate of Insurance must contain one of the following statements:
 - a) "policy contains no deductible clauses."
 - b) "policy contains _____ (amount) deductible property damage clause but company will pay claim and collect the deductible from the insured."
- 5) **KENTUCKY WORKMEN'S COMPENSATION INSURANCE.** The contractor shall furnish evidence of coverage of all his employees or give evidence of self-insurance by submitting a copy of a certificate issued by the Workmen's Compensation Board.

The cost of insurance is incidental to all contract items. All subcontractors must meet the same minimum insurance requirements.

PART V
BID ITEMS

PROPOSAL BID ITEMS

192950

Page 1 of 1

Report Date 12/26/18

Section: 0001 - BRIDGES

LINE	BID CODE	ALT	DESCRIPTION	QUANTITY	UNIT	UNIT PRIC	FP	AMOUNT
0010	02650		MAINTAIN & CONTROL TRAFFIC - 025B00021N	1.00	LS		\$	
0020	02671		PORTABLE CHANGEABLE MESSAGE SIGN - 025B00021N	2.00	EACH		\$	
0030	08434		CLEAN & PAINT STRUCTURAL STEEL - 025B00021N	1.00	LS		\$	
0040	20377EC		BRIDGE HANDRAIL REPAIR - 025B00021N	632.00	LF		\$	
0050	23301EC		CROSS-BRACING REPAIR - 025B00021N TYPE A	4.00	EACH		\$	
0060	23301EC		CROSS-BRACING REPAIR - 025B00021N TYPE B	5.00	EACH		\$	
0070	23301EC		CROSS-BRACING REPAIR - 025B00021N TYPE C	3.00	EACH		\$	
0080	23304EC		REPAIR TRUSS MEMBER - 025B00021N TYPE A	3.00	EACH		\$	
0090	23304EC		REPAIR TRUSS MEMBER - 025B00021N TYPE B	2.00	EACH		\$	
0100	23304EC		REPAIR TRUSS MEMBER - 025B00025N TYPE C	1.00	EACH		\$	
0110	23386EC		JOINT SEAL REPLACEMENT - 025B00021N	60.00	LF		\$	
0120	23949EC		BRIDGE CLEANING & PREVENTIVE MAINTENANCE - 025B00021N	1.00	LS		\$	
0130	24182EC		VERTICAL MEMBER REPAIR - 025B00021N	10.00	EACH		\$	

Section: 0002 - BRIDGES

LINE	BID CODE	ALT	DESCRIPTION	QUANTITY	UNIT	UNIT PRIC	FP	AMOUNT
0140	02650		MAINTAIN & CONTROL TRAFFIC - 025B00055N	1.00	LS		\$	
0150	02671		PORTABLE CHANGEABLE MESSAGE SIGN - 025B00055N	3.00	EACH		\$	
0160	08434		CLEAN & PAINT STRUCTURAL STEEL - 025B00055N	1.00	LS		\$	
0170	23070NN		GIRDER REPAIR - 025B00055N	1.00	EACH		\$	
0180	23594EC		HEAT STRAIGHTENING - 025B00055N	1.00	LS		\$	
0190	23949EC		BRIDGE CLEANING & PREVENTIVE MAINTENANCE - 025B00055N	1.00	LS		\$	

Section: 0003 - DEMOB

LINE	BID CODE	ALT	DESCRIPTION	QUANTITY	UNIT	UNIT PRIC	FP	AMOUNT
0200	02568		MOBILIZATION	1.00	LS		\$	
0210	02569		DEMOBILIZATION	1.00	LS		\$	