



**CALL NO. 407**

**CONTRACT ID. 172918**

**NICHOLAS - CARTER - ELLIOTT - FLEMING COUNTIES**

**FED/STATE PROJECT NUMBER 121GR17M072 - FE02**

**DESCRIPTION DISTRICT 9 BRIDGE OVERLAYS.**

**WORK TYPE BRIDGE DECK RESTORATION & WATERPROOFING**

**PRIMARY COMPLETION DATE 11/15/2018**

**LETTING DATE: December 08,2017**

Sealed Bids will be received electronically through the Bid Express bidding service until 10:00 AM EASTERN STANDARD TIME December 08,2017. Bids will be publicly announced at 10:00 AM EASTERN STANDARD TIME.

**NO PLANS ASSOCIATED WITH THIS PROJECT.**

**REQUIRED BID PROPOSAL GUARANTY:** Not less than 5% of the total bid.

## TABLE OF CONTENTS

PART I	SCOPE OF WORK
	<ul style="list-style-type: none"><li>• PROJECT(S), COMPLETION DATE(S), &amp; LIQUIDATED DAMAGES</li><li>• CONTRACT NOTES</li><li>• STATE CONTRACT NOTES</li><li>• SPECIAL NOTE(S) APPLICABLE TO PROJECT</li><li>• LIQUIDATED DAMAGES</li><li>• TRAFFIC CONTROL PLAN</li><li>• SKETCH MAP(S)</li><li>• MATERIAL SUMMARY</li><li>• BRIDGE DRAWINGS</li></ul>
PART II	SPECIFICATIONS AND STANDARD DRAWINGS
	<ul style="list-style-type: none"><li>• SPECIFICATIONS REFERENCE</li><li>• SUPPLEMENTAL SPECIFICATION</li><li>• STANDARD DRAWINGS THAT APPLY</li></ul>
PART III	EMPLOYMENT, WAGE AND RECORD REQUIREMENTS
	<ul style="list-style-type: none"><li>• LABOR AND WAGE REQUIREMENTS</li><li>• EXECUTIVE BRANCH CODE OF ETHICS</li><li>• KENTUCKY EQUAL EMPLOYMENT OPPORTUNITY ACT OF 1978 LOCALITY / STATE</li><li>• PROJECT WAGE RATES / STATE</li></ul>
PART IV	INSURANCE
PART V	BID ITEMS

**PART I**  
**SCOPE OF WORK**

### ADMINISTRATIVE DISTRICT - 09

**CONTRACT ID - 172918**

**121GR17M072 - FE02**

**COUNTY - CARTER**

**PCN - MB02200601701  
FE02 022 0060 B00063N**

US 60 (MP 24.505). BRIDGE OVER LITTLE SANDY RIVER.BRIDGE DECK RESTORATION & WATERPROOFING  
GEOGRAPHIC COORDINATES LATITUDE 38:19:49.00 LONGITUDE 82:56:08.00

**PCN - MB02216611701  
FE02 022 1661 B00017N**

KY 1661 (MP 1.559). BRIDGE OVER LITTLE SANDY RIVER.BRIDGE DECK RESTORATION & WATERPROOFING  
GEOGRAPHIC COORDINATES LATITUDE 38:17:10.00 LONGITUDE 82:58:39.00

**COUNTY - ELLIOTT**

**PCN - MB03200071701  
FE02 032 0007 B00006N**

KY 7 (MP 7.153). BRIDGE OVER LITTLE SANDY RIVERBRIDGE DECK RESTORATION & WATERPROOFING  
GEOGRAPHIC COORDINATES LATITUDE 38:05:15.00 LONGITUDE 83:07:28.00

**PCN - MB03200071702  
FE02 032 0007 B00007N**

KY 7 (MP 4.147). BRIDGE OVER DOCTORS BRANCH.BRIDGE DECK RESTORATION & WATERPROOFING  
GEOGRAPHIC COORDINATES LATITUDE 38:04:04.00 LONGITUDE 83:09:58.00

**COUNTY - FLEMING**

**PCN - MB03510131701  
FE02 035 1013 B00063N**

KY 1013 (MP 9.613). BRIDGE OVER FOX CREEK.BRIDGE DECK RESTORATION & WATERPROOFING  
GEOGRAPHIC COORDINATES LATITUDE 38:20:42.00 LONGITUDE 83:32:00.00

**COUNTY - NICHOLAS**

**PCN - MB09100571701  
FE02 091 0057 B00045N**

KY 57 (MP 1.174). BRIDGE OVER SOMERSET CREEK.BRIDGE DECK RESTORATION & WATERPROOFING  
GEOGRAPHIC COORDINATES LATITUDE 38:13:54.00 LONGITUDE 84:00:20.00

**COUNTY - ROWAN**

**PCN - MB10303771701  
FE02 103 0377 B00023N**

KY 377 (MP 0.58). BRIDGE OVER BRUSHY CREEK.BRIDGE DECK RESTORATION & WATERPROOFING  
GEOGRAPHIC COORDINATES LATITUDE 38:12:42.00 LONGITUDE 83:28:13.00

**COMPLETION DATE(S):**

COMPLETED BY 11/15/2018	APPLIES TO ENTIRE CONTRACT
30 CALENDAR Days	APPLIES TO 022B00017N
30 CALENDAR Days	APPLIES TO 022B00063N
30 CALENDAR Days	APPLIES TO 032B00006N
30 CALENDAR Days	APPLIES TO 032B00007N
30 CALENDAR Days	APPLIES TO 035B00063N
30 CALENDAR Days	APPLIES TO 091B00045N
30 CALENDAR Days	APPLIES TO 103B00023N

## **CONTRACT NOTES**

### **PROPOSAL ADDENDA**

All addenda to this proposal must be applied when calculating bid and certified in the bid packet submitted to the Kentucky Department of Highways. Failure to use the correct and most recent addenda may result in the bid being rejected.

### **BID SUBMITTAL**

Bidder must use the Department's Expedite Bidding Program available on the Internet web site of the Department of Highways, Division of Construction Procurement. ([www.transportation.ky.gov/construction-procurement](http://www.transportation.ky.gov/construction-procurement))

The Bidder must download the bid file located on the Bid Express website ([www.bidx.com](http://www.bidx.com)) to prepare a bid packet for submission to the Department. The bidder must submit electronically using Bid Express.

### **JOINT VENTURE BIDDING**

Joint venture bidding is permissible. All companies in the joint venture must be prequalified in one of the work types in the Qualifications for Bidders for the project. The bidders must get a vendor ID for the joint venture from the Division of Construction Procurement and register the joint venture as a bidder on the project. Also, the joint venture must obtain a digital ID from Bid Express to submit a bid. A joint bid bond of 5% may be submitted for both companies or each company may submit a separate bond of 5%.

### **UNDERGROUND FACILITY DAMAGE PROTECTION**

The contractor shall make every effort to protect underground facilities from damage as prescribed in the Underground Facility Damage Protection Act of 1994, Kentucky Revised Statute KRS 367.4901 to 367.4917. It is the contractor's responsibility to determine and take steps necessary to be in compliance with federal and state damage prevention directives. When prescribed in said directives, the contractor shall submit Excavation Locate Requests to the Kentucky Contact Center (KY811) via web ticket entry. The submission of this request does not relieve the contractor from the responsibility of contacting non-member facility owners, whom shall be contacted through their individual Protection Notification Center. Non-compliance with these directives can result in the enforcement of penalties.

### **SPECIAL NOTE FOR COMPOSITE OFFSET BLOCKS**

Contrary to the Standard Drawings (2016 edition) the Cabinet will allow 6" composite offset blocks in lieu of wooden offset blocks, except as specified on proprietary end treatments and crash cushions. The composite blocks shall be selected from the Cabinet's List of Approved Materials.

### **REGISTRATION WITH THE SECRETARY OF STATE BY A FOREIGN ENTITY**

Pursuant to KRS 176.085(1)(b), an agency, department, office, or political subdivision of the Commonwealth of Kentucky shall not award a state contract to a person that is a foreign entity required by [KRS 14A.9-010](#) to obtain a certificate of authority to transact business in the Commonwealth (“certificate”) from the Secretary of State under [KRS 14A.9-030](#) unless the person produces the certificate within fourteen (14) days of the bid or proposal opening. If the foreign entity is not required to obtain a certificate as provided in [KRS 14A.9-010](#), the foreign entity should identify the applicable exception. Foreign entity is defined within [KRS 14A.1-070](#).

**For all foreign entities required to obtain a certificate of authority to transact business in the Commonwealth, if a copy of the certificate is not received by the contracting agency within the time frame identified above, the foreign entity’s solicitation response shall be deemed non-responsive or the awarded contract shall be cancelled.**

Businesses can register with the Secretary of State at <https://secure.kentucky.gov/sos/ftbr/welcome.aspx>.

### **SPECIAL NOTE FOR PROJECT QUESTIONS DURING ADVERTISEMENT**

Questions about projects during the advertisement should be submitted in writing to the Division of Construction Procurement. This may be done by fax (502) 564-7299 or email to [kytc.projectquestions@ky.gov](mailto:kytc.projectquestions@ky.gov). The Department will attempt to answer all submitted questions. The Department reserves the right not to answer if the question is not pertinent or does not aid in clarifying the project intent.

The deadline for posting answers will be 3:00 pm Eastern Daylight Time, the day preceding the Letting. Questions may be submitted until this deadline with the understanding that the later a question is submitted, the less likely an answer will be able to be provided.

The questions and answers will be posted for each Letting under the heading “Questions & Answers” on the Construction Procurement website ([www.transportation.ky.gov/contract](http://www.transportation.ky.gov/contract)). The answers provided shall be considered part of this Special Note and, in case of a discrepancy, will govern over all other bidding documents.

### **HARDWOOD REMOVAL RESTRICTIONS**

The US Department of Agriculture has imposed a quarantine in Kentucky and several surrounding states, to prevent the spread of an invasive insect, the emerald ash borer. Hardwood cut in conjunction with the project may not be removed from the state. Chipping or burning on site is the preferred method of disposal.

### **INSTRUCTIONS FOR EXCESS MATERIAL SITES AND BORROW SITES**

Identification of excess material sites and borrow sites shall be the responsibility of the Contractor. The Contractor shall be responsible for compliance with all applicable state and federal laws and may wish to consult with the US Fish and Wildlife Service to seek protection under Section 10 of the Endangered Species Act for these activities.

### **ACCESS TO RECORDS**

The contractor, as defined in KRS 45A.030 (9) agrees that the contracting agency, the Finance and Administration Cabinet, the Auditor of Public Accounts, and the Legislative Research Commission, or their duly authorized representatives, shall have access to any books, documents, papers, records, or other evidence, which are directly pertinent to this contract for the purpose of financial audit or program review. Records and other prequalification information confidentially disclosed as part of the bid process shall not be deemed as directly pertinent to the contract and shall be exempt from disclosure as provided in KRS 61.878(1)(c). The contractor also recognizes that any books, documents, papers, records, or other evidence, received during a financial audit or program review shall be subject to the Kentucky Open Records Act, KRS 61.870 to 61.884.

In the event of a dispute between the contractor and the contracting agency, Attorney General, or the Auditor of Public Accounts over documents that are eligible for production and review, the Finance and Administration Cabinet shall review the dispute and issue a determination, in accordance with Secretary's Order 11-004.

06/01/16

**SPECIAL NOTE FOR RECIPROCAL PREFERENCE**

**Reciprocal preference to be given by public agencies to resident bidders**

**By reference, KRS 45A.490 to 45A.494 are incorporated herein and in compliance regarding the bidders residency. Bidders who want to claim resident bidder status should complete the Affidavit for Claiming Resident Bidder Status along with their bid in the Expedite Bidding Program. Submittal of the Affidavit should be done along with the bid in Bid Express.**

03/01/2011



## **SPECIAL NOTE FOR BRIDGE RESTORATION AND WATERPROOFING WITH CONCRETE OVERLAYS**

- I. DESCRIPTION.** Perform all work in accordance with the Kentucky Transportation Cabinet, Department of Highway's 2012 Standard Specifications for Road and Bridge Construction and applicable Supplemental Specifications, the Standard Drawings, this Note, and the attached detail drawings. Section references are to the Standard Specifications.

This work consists of the following: (1) Furnish all labor, materials, tools, and equipment; (2) Remove the existing overlay or machine prep the existing slab; (3) Complete full-depth and partial depth repairs as directed by the Engineer; (4) Repair/replace damaged and corroded reinforcing bars; (5) Place new concrete overlay and epoxy-sand slurry in accordance with Section 606; (6) Complete asphalt approach pavement; (7) Maintain and control traffic; and (8) Any other work specified as part of this contract.

All construction will be in accordance with Section 606 unless otherwise specified.

**II. MATERIALS.**

- A. Latex Concrete.** See Section 606.03.17.
- B. Class "M" Concrete.** Use either "M1" or "M2". See Section 601.
- C. Bituminous Asphalt.** Use CL2 ASPH SURF 0.38D PG64-22.
- D. Epoxy-Sand Slurry.** See Section 606.03.10.

**III. CONSTRUCTION.**

- A. Machine prep of existing slab.** For 035B00063N, remove concrete from existing slab to a depth of at least ¼" below the existing surface, and remove all patches completely, in accordance with the requirements of Section 606.03.03.
- B. Remove Existing Overlay.** In addition to Section 606.03.03, totally remove the existing concrete overlay for 022B00017N, 022B00063N, 032B00006N, 032B00007N, 091B00045N, and 103B00023N by milling.
- C. Partial Depth Slab Repair and Latex Overlay.** Remove areas determined to be unsound by the Engineer via hydrodemolition or via hand held jackhammers weighing less than 45lbs in accordance with Section 606.02.10 D. Repair/Replace all damaged or severely corroded reinforcing bars prior to partial depth repair operation. The Department will not measure material removal and will consider this work incidental to the bid item "PARTIAL DEPTH PATCHING". Mix and place Latex Modified Concrete Overlay in accordance with Sections 606.03.08 and 606.03.17.
- D. Asphalt Approach Pavement.** Mill each existing asphalt approach for a distance of 50' for 032B00006N, 022B00017N, 022B00063N and 091B00045N, and 100' for 032B00007N, 035B00063N, and 103B00023N from the bridge ends. Remove the bituminous material uniformly by making an edge key, so as to provide a smooth transition to the finished bridge when a new bituminous overlay of compacted depth of approximately 1½" is added to the approaches. The grinding depth may vary

- depending of the condition of the existing approach and final elevation of bridge end.  
Dispose of all removed material away from the site.
- E. Surface Texturing.** Texture the concrete surface of the overlay in accordance with Section 609.03.10.

**IV. MEASUREMENT.** See Section 606 and the following:

- A. Latex Modified Concrete for Concrete Overlay.** The Department will measure the quantity in cubic yards using the theoretical volume as follows for each bridge:

022B00017N	(206'x20'x1.50")	= 19.1 cuyd
022B00063N	(318'x26'x1.50")	= 38.3 cuyd
032B00006N	(106'x36.5'AVGx1.50")	= 17.9 cuyd
032B00007N	(56'x24'x1.50")	= 6.2 cuyd
035B00063N	(114'x24'x1.50")	= 12.7 cuyd
091B00045N	(159'x20'x1.50")	= 14.7 cuyd
103B00023N	(86'x20'x1.50")	= 8.0 cuyd

- B. Latex Modified Concrete for Partial Depth Patching and variable thickness of Overlay.** The Department will measure the quantity in cubic yards by deducting the theoretical volume of bridge deck overlay (LMC) from the total volume (as indicated by the batch quantity tickets) of Concrete required to obtain the finished grade shown on the Plans or established by the Engineer.
- C. Machine Prep of Slab.** The Department will measure the machine preparation of the existing bridge deck for 035B00063N in square yards, which shall include all labor, equipment, and material needed to complete this work.
- D. Remove Existing Overlay.** The Department will measure the removal of the existing overlay for 022B00017N, 022B00063N, 032B00006N, 032B00007N, 091B00045N, and 103B00023N in square yards, which shall include all labor, equipment, and material needed to complete this work.
- E. Steel Reinforcement.** The Department will measure any reinforcing steel necessary for the partial or full depth patch in pounds, which shall include all labor, equipment, and material needed to complete this work.
- F. Asphalt Approach Pavement.** The Department will measure the quantity in square yards, which shall include all labor, equipment, and material needed to complete this work.

**V. PAYMENT.** See Section 606 and the following:

- A. Latex Modified Concrete for Overlay.** The Department will make payment for the Latex Modified Concrete under bid item #08534 "CONCRETE OVERLAY – LATEX" for the quantity in cubic yards complete in place.
- B. Latex Modified Concrete for Partial Depth Patching and variable thickness of Overlay.** The Department will make payment for the Partial Depth Patching under bid item #24094EC "PARTIAL DEPTH PATCHING". Payment will be for the quantity per cubic yard complete in place.

- C. Machine Prep of Slab.** The Department will make payment for the machine prep of existing slab for 035B00063N, under bid item #08551 “MACHINE PREP OF SLAB”. Payment will be for the square yard complete.
- D. Remove Existing Overlay.** The Department will make payment for the removal of the existing overlay for 022B00017N, 022B00063N, 032B00006N, 032B00007N, 091B00045N, and 103B00023N under the bid item #08510 “REM EPOXY BIT FOREIGN OVERLAY”. Payment will be for the square yard complete.
- E. Steel Reinforcement.** The Department will make payment for steel reinforcement, if necessary, under bid item #08150 “STEEL REINFORCEMENT”. Payment will be at the unit price per pound.
- F. Asphalt Approach Pavement.** The Department will make payment for the completed and accepted quantity of this work under the bid item #03304 “BRIDGE OVERLAY APPROACH PAVEMENT”.

## **SPECIAL NOTE FOR REPLACING EXPANSION DAMS AND/OR INSTALLING ARMORED EDGES FOR CONCRETE ON BRIDGES**

**I. DESCRIPTION.** Perform all work in accordance with the Kentucky Transportation Cabinet, Department of Highway's 2012 Standard Specifications for Road and Bridge Construction and applicable Supplemental Specifications, the Standard Drawings, this Note, and the attached detail drawings. Section references are to the Standard Specifications.

This work consists of the following: (1) Furnish all labor, materials, tools, and equipment; (2) Remove existing concrete and expansion device(s) and/or bridge ends; (3) Install armored edges and new concrete as specified and in accordance with the attached detail drawings; (4) Install new joint seals (where required); (5) Maintain and control traffic; and (6) Any other work specified as part of this contract.

### **II. MATERIALS.**

**A. Class "M" Concrete.** Use either "M1" or "M2". See Section 601.

**B. Structural Steel.** Use new, commercial grade steel suitable for welding. The Engineer will base acceptance on visual inspection. For armored edges that make up the 4" neoperene joint, use Steelflex Strip Seal expansion joint by DS Brown, or approved equal. To be approved, armored edge extrusions must be embedded.

**C. Stud Anchors.** The armored edge stud anchors are 3/4" x 6" embedded stud shear connectors conforming to ASTM A108, Grade 1015 (Nelson Studs or equal).

**D. Steel Reinforcement.** Use Grade 60. See Section 602.

**E. Epoxy Bond Coat.** See Section 511.

**F. Pre-Compressed Horizontal Expansion Joint System.** It shall have a cellular, or micro-cell, polyurethane foam impregnated with a hydrophobic acrylic emulsion, or a hydrophobic polymer. The polyurethane foam external facing shall be factory coated and cured with highway-grade, fuel resistant silicone or a highway-grade elastomeric coating at a width greater than the maximum joint expansion.

### **III. EQUIPMENT.**

**A. Hammers.** See Section 606.02.10 B.

**B. Sawing Equipment.** See Section 606.02.10 C.

**C. Hydraulic Impact Equipment.** See Section 606.02.10 D.

### **IV. CONSTRUCTION.**

**A. Remove Existing Materials.** Remove existing Expansion Dam, Bridge End, Armored Edges and specified areas of concrete as shown on the attached sketches. Remove debris and/or expansion joint filler as directed by the Engineer. . Clean and leave all existing steel reinforcement encountered in place. Damaged steel reinforcement will be repaired/replaced as directed by the Engineer at no additional cost to the Department.

Dispose of all removed material entirely away from the job site. This work is incidental to the contract unit price for "Expansion Joint Replacement" or "Armored Edge for Concrete".

**B. Place New Concrete and Armored Edges.** After all specified existing materials have been removed; place new armored edges to match the grade of the proposed overlay or to match the original grade (See attached detail drawings). Place the new Class "M" concrete to the scarified grade and finish to receive the new overlay or place the new Class "M" concrete to the original grade and finish with broom strokes drawn transversely from curb to curb.

All new structural steel shall be cleaned and painted in accordance with requirements of Section 607.03.23, except that surfaces to come in contact with concrete are not to be painted.

Blast clean all areas of existing concrete and structural steel to come in contact with new concrete until free of all laitance and deleterious substances immediately prior to the placement of the Class "M" Concrete. The surface areas of existing concrete to come in contact with the new Class "M" Concrete are to be coated with an epoxy bond coat immediately prior to placing new concrete in accordance with Section 511. The interfaces of the new and old concrete shall be as nearly vertical and horizontal as possible.

**C. Additional Steel Reinforcement.** Furnish for replacement, as directed by the Engineer, 7750 linear feet of #4 steel reinforcing bars in 20' lengths. Place these bars in areas deemed by the Engineer to require additional reinforcement. Field cutting and bending is permitted. Do not place any additional steel reinforcement above the height of the top row of Nelson Studs on the armored edges. Ensure that all exposed steel reinforcement is tied in accordance with Section 602.03.04 prior to pouring the new Class "M" concrete. Deliver unused bars to the Local County Maintenance Barn. Payment will be made in accordance with Section 602.

**D. Stage Construction.** Installation of concrete and armored edges in two (or more if specified) stages is necessary. Join the armored edges at or near the centerline of the roadway or lane line, field weld and grind smooth.

**E. Pre-Compressed Horizontal Expansion Joint System.** System shall be supplied in pre-compressed sticks for easy installation. System shall be installed in accordance with manufacturer's recommendations concerning approved adhesives, welds between sticks and appurtenances, and adhesion to concrete deck or armored edges. Joint seal is to be installed 1/2" recessed from the surface.

**F. Shop Plans.** Shop plans will not be required. The Contractor is responsible for obtaining field measurements and supplying properly sized materials to complete the work.

## V. MEASUREMENT.

**A. Expansion Joint Replacement – 2".** The Department will measure the quantity in linear feet from gutterline to gutterline along the centerline of the joint.

**B. Armored Edge for Concrete.** The Department will measure the quantity in linear feet from gutterline to gutterline along the face of the bridge end.

**C. Steel Reinforcement.** See Section 602.

## VI. PAYMENT.

**A. Expansion Joint Replacement – 2".** Payment at the contract unit price per linear foot is full compensation for removing specified existing materials, furnishing and

installing the new armored edges, concrete, neoprene strip seal or pre-compressed horizontal expansion joint system, and all incidental items necessary to complete the work (except the overlay material) within the specified pay limits as specified by this note and as shown on the attached detail drawings.

- B. Armored Edge for Concrete.** Payment at the contract unit price per linear foot is full compensation for removing specified existing materials, furnishing and installing the new armored edges, concrete and all incidental items necessary to complete the work (except the overlay material) within the specified pay limits as specified by this note and as shown on the attached detail drawings.
- C. Steel Reinforcement.** See Section 602.

## SPECIAL NOTE FOR ELIMINATING TRANSVERSE JOINTS ON BRIDGES

- I. **DESCRIPTION.** Perform all work in accordance with the Kentucky Transportation Cabinet, Department of Highway's 2012 Standard Specifications for Road and Bridge Construction.

Remove existing concrete and existing joint material to eliminate the transverse joint. Install additional reinforcing steel and place concrete.
  
- II. **MATERIALS.**
  - A. **Class "M" Concrete.** Use either "M1" or "M2". See Section 601.
  - B. **Steel Reinforcement.** Use Grade 60. See Section 602.
  - C. **Epoxy Bond Coat.** See Section 511.
  
- III. **EQUIPMENT.**
  - A. **Hammers.** See Section 606.02.10 B.
  - B. **Sawing Equipment.** See Section 606.02.10 C.
  - C. **Hydraulic Impact Equipment.** See Section 606.02.10 D.
  
- IV. **CONSTRUCTION.**
  - A. **Remove Existing Materials.** Remove the existing transverse joints, joint filler, and specified areas of concrete as shown on the plans, in accordance with Section 606.02.10 and 606.03.03, and as directed by the Engineer. Clean and leave all existing steel reinforcement encountered in place. Damaged steel reinforcement will be repaired/replaced as directed by the Engineer at no additional cost to the Department. Dispose of all removed material entirely away from the job site. This work is incidental to the contract unit price for "Eliminate Transverse Joint".
  - B. **Additional Steel Reinforcement.** Furnish for this work steel reinforcing bars as shown on the plans. Splice these bars to the existing longitudinal reinforcement in the deck and curb/sidewalk in the areas of removed concrete to tie the slabs together as shown on the plans. Ensure that all exposed steel reinforcement is tied in accordance with Section 602.03.04 prior to pouring the new Class "M" concrete.
  - C. **Place New Concrete.** Blast clean all areas of existing concrete and structural steel to come in contact with new concrete until free of all laitance and deleterious substances immediately prior to the placement of the Class "M" Concrete. The surface areas of existing concrete to come in contact with the new Class "M" Concrete are to be coated with an epoxy bond coat immediately prior to placing new concrete in accordance with Section 511. The interfaces of the new and old concrete shall be as nearly vertical and horizontal as possible.

Place new Class "M" Concrete to the specified grade and finish to receive the new overlay or as shown on the plans. On the sidewalk and curb, place the new concrete to original grade and finish to match the existing curb/sidewalk.
  
- V. **MEASUREMENT.**
  - A. **Eliminate Transverse Joint.** The Department will measure the quantity in linear feet from plinth to plinth perpendicular to the centerline of the bridge.

**B. Steel Reinforcement.** See Section 602.

**VI. PAYMENT.**

**A. Eliminate Transverse Joint.** Payment at the contract unit price per linear foot is full compensation for furnishing equipment, labor, tools and materials needed to complete removal and disposal of the specified existing materials, cleaning and straightening of existing steel reinforcement, furnishing and installing the concrete, and all incidental items necessary to complete the work (except the overlay material if specified elsewhere in the contract) within the specified pay limits as indicated on the drawings.

**B. Steel Reinforcement.** See Section 602.



**SPECIAL NOTE FOR CONTRACT COMPLETION DATE AND LIQUIDATED DAMAGES ON BRIDGE REPAIR CONTRACTS**

- I. COMPLETION DATE.** The Contractor has the option of selecting the starting date for this Contract. Once selected, notify the Department in writing of the date selected at least two weeks prior to beginning work. All work is to be completed by November 15, 2018. An allotted number of Calendar days are assigned to each structure in this contract as shown below.

<u>STRUCTURE</u>	<u>NO. OF CALENDAR DAYS</u>	<u>COMPLETION DATE</u>
022B00017N	30	November 15, 2018
022B00063N	30	November 15, 2018
032B00006N	30	November 15, 2018
032B00007N	30	November 15, 2018
035B00063N	30	November 15, 2018
091B00045N	30	November 15, 2018
103B00023N	30	November 15, 2018

Contrary to Section 108.07.02, the Engineer will begin charging calendar days for a structure on the day the Contractor starts work or sets up traffic control on that particular structure.

- II. LIQUIDATED DAMAGES.** Liquidated damages will be assessed the Contractor in accordance with the Transportation Cabinet, Department of Highway's 2012 Standard Specifications for Road and Bridge Construction, Section 108.09, when either the allotted number of calendar days or the November 15, 2018 date is exceeded.

Contrary to the Standard Specifications, liquidated damages will be assessed the Contractor during the months of December, January, February and March when the contract time has expired on any individual bridge or bridges. Contract time will be charged during these months.

All construction must be completed in accordance with the weather limitations specified in Section 606 and/or Section 601 as applicable. No extension of Contract time will be granted due to inclement weather or temperature limitations that occur due to starting work on the Contract or a structure late in the construction season.

## **SPECIAL NOTE FOR TRAFFIC CONTROL ON BRIDGE REPAIR CONTRACTS**

### **I. TRAFFIC CONTROL GENERAL**

Except as provided herein, traffic shall be maintained in accordance with the 2012 Standard Specifications, Section 112. Except for the roadway and traffic control bid items listed, all items of work necessary to maintain and control traffic will be paid at the lump sum bid price to "Maintain and Control Traffic".

Contrary to Section 106.01, traffic control devices used on this project may be new or used in new condition, at the beginning of the work and maintained in like new condition until completion of the work.

### **II. TRAFFIC COORDINATOR**

Furnish a Traffic Coordinator as per Section 112. The Traffic Coordinator shall inspect the project maintenance of traffic, at least three times daily, or as directed by the Engineer, during the Contractor's operations and at any time a lane closure is in place. The personnel shall have access on the project to a radio or telephone to be used in case of emergencies or accidents.

The Traffic Coordinator shall report all incidents throughout the work zone to the Engineer on the project. The Contractor shall furnish the name and telephone number where the Traffic Coordinator can be contacted at all times.

### **III. SIGNS**

Contrary to Section 112.04.02, only long term signs (sign intended to be continuously in place for more than 3 days) will be measured for payment; short term signs (signs intended to be left in place for 3 days or less) will not be measured for payment but will be incidental to Maintain and Control Traffic.

The contractor is to install warning signs for wide loads in advance of the bridge under the direction of the Engineer. The Department will not measure installation, maintenance, or removal for payment, and will consider these incidentals to Maintain and Control Traffic.

### **IV. TEMPORARY PAVEMENT STRIPING**

Skip lines and/or solid lines through the length of the tapers for lane closures and other striping as directed by the Engineer shall be temporarily covered with 6" black removable tape. Permanent removal of all other pavement striping for traffic control shall be considered incidental to Maintain and Control Traffic. Temporary pavement striping shall be paid only once per course in accordance with Section 112.04.07. The Contractor shall replace any temporary striping that becomes damaged or fails to adhere to the pavement before dark on the day of the notification. Liquidated damages shall be assessed to the Contractor at a rate of \$500 per day for failing to replace temporary striping within this time limit.

## V. PROJECT PHASING & CONSTRUCTION PROCEDURES

Maintain one lane of traffic during construction in accordance with Standard Drawing No. TTC-110 for lane closures, and the attached detail drawing. The minimum clear lane width required shall be as follows:

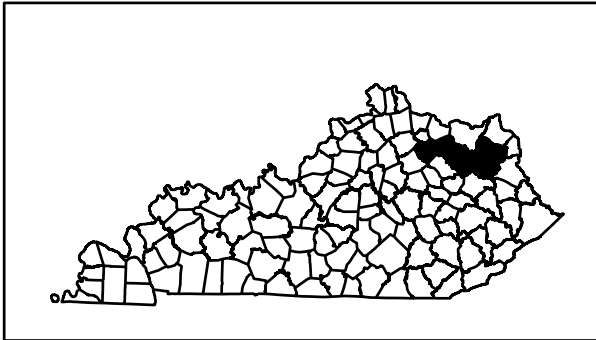
022B00017N	9'-6"
022B00063N	12'-0"
032B00006N	13'-0"
032B00007N	11'-0"
035B00063N	11'-0"
091B00045N	9'-6"
103B00023N	9'-6"

## VI. TEMPORARY SIGNAL

Provide, install, and maintain a temporary 2 phase signal or multi phase traffic signal as specified below. The Contractor must provide a 24-hour contact person and number available to maintain the temporary signals as needed.

022B00017N	multi-phase
022B00063N	2 phase
032B00006N	multi-phase
032B00007N	multi-phase
035B00063N	2 phase
091B00045N	2 phase
103B00023N	2 phase

# CARTER, ELLIOT, FLEMING, NICHOLAS, & ROWAN COUNTIES



BRIDGE 091B00045N  
KY 57 (MP 1.174)  
OVER SOMERSET CREEK  
LatDD= 38.2317, LonDD= -84.0056

BRIDGE 035B00063N  
KY 1013 (MP 9.613)  
OVER FOX CREEK  
LatDD= 38.3448, LonDD= -83.5337

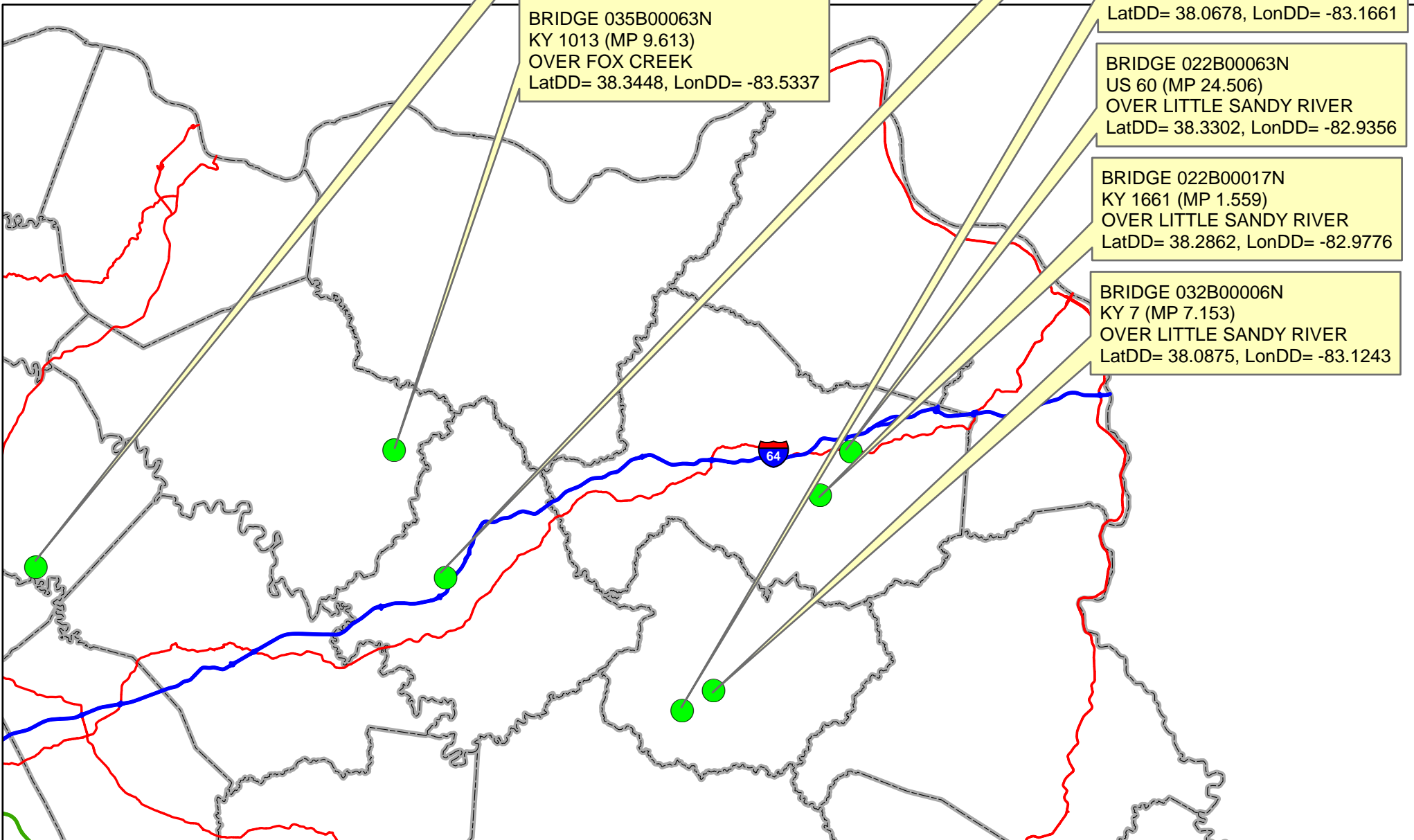
BRIDGE 0103B00023N  
KY 377 (MP 0.58)  
OVER BRUSHY CREEK  
LatDD= 38.2116, LonDD= -83.4701

BRIDGE 032B00007N  
KY 7 (MP 4.147)  
OVER DOCTORS BRANCH  
LatDD= 38.0678, LonDD= -83.1661

BRIDGE 022B00063N  
US 60 (MP 24.506)  
OVER LITTLE SANDY RIVER  
LatDD= 38.3302, LonDD= -82.9356

BRIDGE 022B00017N  
KY 1661 (MP 1.559)  
OVER LITTLE SANDY RIVER  
LatDD= 38.2862, LonDD= -82.9776

BRIDGE 032B00006N  
KY 7 (MP 7.153)  
OVER LITTLE SANDY RIVER  
LatDD= 38.0875, LonDD= -83.1243



# MATERIAL SUMMARY

**CONTRACT ID: 172918**

**121GR17M072 - FE02**

**MB02200601701**

US 60 (MP 24.505). BRIDGE OVER LITTLE SANDY RIVER. BRIDGE DECK RESTORATION & WATERPROOFING.

Project Line No	Bid Code	DESCRIPTION	Quantity	Unit
0400	02562	TEMPORARY SIGNS	149.00	SQFT
0405	02650	MAINTAIN & CONTROL TRAFFIC - APPLIES TO 022B00063N	1.00	LS
0410	02653	LANE CLOSURE	2.00	EACH
0415	03295	EXPAN JOINT REPLACE 2 IN	52.00	LF
0420	03299	ARMORED EDGE FOR CONCRETE	52.00	LF
0425	03300	ELIMINATE TRANSVERSE JOINT	93.00	LF
0430	03302	REPAIR CONCRETE CURB	120.00	LF
0435	03304	BRIDGE OVERLAY APPROACH PAVEMENT	289.00	SQYD
0440	04933	TEMP SIGNAL 2 PHASE	1.00	EACH
0445	06514	PAVE STRIPING-PERM PAINT-4 IN	1,672.00	LF
0450	06549	PAVE STRIPING-TEMP REM TAPE-B	500.00	LF
0455	06550	PAVE STRIPING-TEMP REM TAPE-W	1,000.00	LF
0460	06551	PAVE STRIPING-TEMP REM TAPE-Y	2,000.00	LF
0465	08150	STEEL REINFORCEMENT	1,469.60	LB
0470	08504	EPOXY SAND SLURRY	306.20	SQYD
0475	08510	REM EPOXY BIT FOREIGN OVERLAY	919.00	SQYD
0480	08526	CONC CLASS M FULL DEPTH PATCH	20.00	CUYD
0485	08534	CONCRETE OVERLAY-LATEX	38.30	CUYD
0490	08549	BLAST CLEANING	1,225.00	SQYD
0495	24094EC	PARTIAL DEPTH PATCHING	25.50	CUYD
0500	02569	DEMOBILIZATION	1.00	LS

# MATERIAL SUMMARY

**CONTRACT ID: 172918**

**121GR17M072 - FE02**

**MB02216611701**

KY 1661 (MP 1.559). BRIDGE OVER LITTLE SANDY RIVER. BRIDGE DECK RESTORATION & WATERPROOFING.

Project Line No	Bid Code	DESCRIPTION	Quantity	Unit
0305	02562	TEMPORARY SIGNS	149.00	SQFT
0310	02650	MAINTAIN & CONTROL TRAFFIC - APPLIES TO 022B00017N	1.00	LS
0315	02653	LANE CLOSURE	2.00	EACH
0320	03299	ARMORED EDGE FOR CONCRETE	40.00	LF
0325	03304	BRIDGE OVERLAY APPROACH PAVEMENT	222.00	SQYD
0330	04933	TEMP SIGNAL 2 PHASE	1.00	EACH
0335	06514	PAVE STRIPING-PERM PAINT-4 IN	612.00	LF
0340	06549	PAVE STRIPING-TEMP REM TAPE-B	500.00	LF
0345	06550	PAVE STRIPING-TEMP REM TAPE-W	1,000.00	LF
0350	06551	PAVE STRIPING-TEMP REM TAPE-Y	2,000.00	LF
0355	08150	STEEL REINFORCEMENT	267.20	LB
0360	08504	EPOXY SAND SLURRY	141.10	SQYD
0365	08510	REM EPOXY BIT FOREIGN OVERLAY	458.00	SQYD
0370	08526	CONC CLASS M FULL DEPTH PATCH	10.00	CUYD
0375	08534	CONCRETE OVERLAY-LATEX	19.10	CUYD
0380	08549	BLAST CLEANING	599.00	SQYD
0385	24094EC	PARTIAL DEPTH PATCHING	12.70	CUYD
0390	02569	DEMOBILIZATION	1.00	LS
0395	03295	EXPAN JOINT REPLACE 2 IN	40.00	LF

# MATERIAL SUMMARY

**CONTRACT ID: 172918**

**121GR17M072 - FE02**

**MB03200071701**

KY 7 (MP 7.153). BRIDGE OVER LITTLE SANDY RIVER BRIDGE DECK RESTORATION & WATERPROOFING.

Project Line No	Bid Code	DESCRIPTION	Quantity	Unit
0505	02562	TEMPORARY SIGNS	149.00	SQFT
0510	02650	MAINTAIN & CONTROL TRAFFIC - APPLIES TO 032B00006N	1.00	LS
0515	02653	LANE CLOSURE	2.00	EACH
0520	03299	ARMORED EDGE FOR CONCRETE	88.00	LF
0525	03300	ELIMINATE TRANSVERSE JOINT	34.00	LF
0530	03304	BRIDGE OVERLAY APPROACH PAVEMENT	500.00	SQYD
0535	04934	TEMP SIGNAL MULTI PHASE	1.00	EACH
0540	06514	PAVE STRIPING-PERM PAINT-4 IN	624.00	LF
0545	06549	PAVE STRIPING-TEMP REM TAPE-B	500.00	LF
0550	06550	PAVE STRIPING-TEMP REM TAPE-W	1,000.00	LF
0555	06551	PAVE STRIPING-TEMP REM TAPE-Y	2,000.00	LF
0560	08150	STEEL REINFORCEMENT	567.80	LB
0565	08504	EPOXY SAND SLURRY	102.10	SQYD
0570	08510	REM EPOXY BIT FOREIGN OVERLAY	430.00	SQYD
0575	08526	CONC CLASS M FULL DEPTH PATCH	4.00	CUYD
0580	08534	CONCRETE OVERLAY-LATEX	17.90	CUYD
0585	08549	BLAST CLEANING	532.00	SQYD
0590	24094EC	PARTIAL DEPTH PATCHING	11.90	CUYD
0595	02569	DEMOBILIZATION	1.00	LS

# MATERIAL SUMMARY

**CONTRACT ID: 172918**

**121GR17M072 - FE02**

**MB03200071702**

KY 7 (MP 4.147). BRIDGE OVER DOCTORS BRANCH. BRIDGE DECK RESTORATION & WATERPROOFING.

Project Line No	Bid Code	DESCRIPTION	Quantity	Unit
0600	02562	TEMPORARY SIGNS	149.00	SQFT
0605	02650	MAINTAIN & CONTROL TRAFFIC - APPLIES TO 032B00007N	1.00	LS
0610	02653	LANE CLOSURE	2.00	EACH
0615	03299	ARMORED EDGE FOR CONCRETE	67.90	LF
0620	03300	ELIMINATE TRANSVERSE JOINT	37.30	LF
0625	03304	BRIDGE OVERLAY APPROACH PAVEMENT	533.00	SQYD
0630	04934	TEMP SIGNAL MULTI PHASE	1.00	EACH
0635	06514	PAVE STRIPING-PERM PAINT-4 IN	1,024.00	LF
0640	06549	PAVE STRIPING-TEMP REM TAPE-B	500.00	LF
0645	06550	PAVE STRIPING-TEMP REM TAPE-W	1,000.00	LF
0650	06551	PAVE STRIPING-TEMP REM TAPE-Y	2,000.00	LF
0655	08150	STEEL REINFORCEMENT	567.80	LB
0660	08504	EPOXY SAND SLURRY	43.60	SQYD
0665	08510	REM EPOXY BIT FOREIGN OVERLAY - EXISTING ASPHALT OVERLAY VARIES BETWEEN 6" - 12"	149.00	SQYD
0670	08526	CONC CLASS M FULL DEPTH PATCH	6.00	CUYD
0675	08534	CONCRETE OVERLAY-LATEX	6.20	CUYD
0680	08549	BLAST CLEANING	193.00	SQYD
0685	24094EC	PARTIAL DEPTH PATCHING	4.10	CUYD
0690	02569	DEMOBILIZATION	1.00	LS



# MATERIAL SUMMARY

**CONTRACT ID: 172918**

**121GR17M072 - FE02**

**MB03510131701**

KY 1013 (MP 9.613). BRIDGE OVER FOX CREEK. BRIDGE DECK RESTORATION & WATERPROOFING.

Project Line No	Bid Code	DESCRIPTION	Quantity	Unit
0005	02562	TEMPORARY SIGNS	149.00	SQFT
0010	02650	MAINTAIN & CONTROL TRAFFIC - APPLIES TO 035B00063N	1.00	LS
0015	02653	LANE CLOSURE	2.00	EACH
0020	03299	ARMORED EDGE FOR CONCRETE	55.40	LF
0025	03300	ELIMINATE TRANSVERSE JOINT	63.40	LF
0030	03304	BRIDGE OVERLAY APPROACH PAVEMENT	533.00	SQYD
0035	04933	TEMP SIGNAL 2 PHASE	1.00	EACH
0040	06514	PAVE STRIPING-PERM PAINT-4 IN	628.00	LF
0045	06549	PAVE STRIPING-TEMP REM TAPE-B	500.00	LF
0050	06550	PAVE STRIPING-TEMP REM TAPE-W	1,000.00	LF
0055	06551	PAVE STRIPING-TEMP REM TAPE-Y	2,000.00	LF
0060	08150	STEEL REINFORCEMENT	868.40	LB
0065	08504	EPOXY SAND SLURRY	97.10	SQYD
0070	08526	CONC CLASS M FULL DEPTH PATCH	4.00	CUYD
0075	08534	CONCRETE OVERLAY-LATEX	12.70	CUYD
0080	08549	BLAST CLEANING	401.00	SQYD
0085	08551	MACHINE PREP OF SLAB	304.00	SQYD
0090	24094EC	PARTIAL DEPTH PATCHING	8.40	CUYD
0095	02569	DEMOBILIZATION	1.00	LS
0100	23879EC	ACRYLIC GLASS	54.00	SQFT

# MATERIAL SUMMARY

**CONTRACT ID: 172918**

**121GR17M072 - FE02**

**MB09100571701**

KY 57 (MP 1.174). BRIDGE OVER SOMERSET CREEK. BRIDGE DECK RESTORATION & WATERPROOFING.

Project Line No	Bid Code	DESCRIPTION	Quantity	Unit
0105	02562	TEMPORARY SIGNS	149.00	SQFT
0110	02650	MAINTAIN & CONTROL TRAFFIC - APPLIES TO 091B00045N	1.00	LS
0115	02653	LANE CLOSURE	2.00	EACH
0120	03299	ARMORED EDGE FOR CONCRETE	56.60	LF
0125	03300	ELIMINATE TRANSVERSE JOINT	64.60	LF
0130	03304	BRIDGE OVERLAY APPROACH PAVEMENT	222.00	SQYD
0135	04933	TEMP SIGNAL 2 PHASE	1.00	EACH
0140	06514	PAVE STRIPING-PERM PAINT-4 IN	1,036.00	LF
0145	06549	PAVE STRIPING-TEMP REM TAPE-B	500.00	LF
0150	06550	PAVE STRIPING-TEMP REM TAPE-W	1,000.00	LF
0155	06551	PAVE STRIPING-TEMP REM TAPE-Y	2,000.00	LF
0160	08150	STEEL REINFORCEMENT	868.40	LB
0165	08504	EPOXY SAND SLURRY	135.40	SQYD
0170	08510	REM EPOXY BIT FOREIGN OVERLAY	353.00	SQYD
0175	08526	CONC CLASS M FULL DEPTH PATCH	4.00	CUYD
0180	08534	CONCRETE OVERLAY-LATEX	14.70	CUYD
0185	08549	BLAST CLEANING	489.00	SQYD
0190	24094EC	PARTIAL DEPTH PATCHING	9.80	CUYD
0195	02569	DEMOBILIZATION	1.00	LS
0200	23879EC	ACRYLIC GLASS	135.00	SQFT

# MATERIAL SUMMARY

**CONTRACT ID: 172918**

**121GR17M072 - FE02**

**MB10303771701**

KY 377 (MP 0.58). BRIDGE OVER BRUSHY CREEK. BRIDGE DECK RESTORATION & WATERPROOFING.

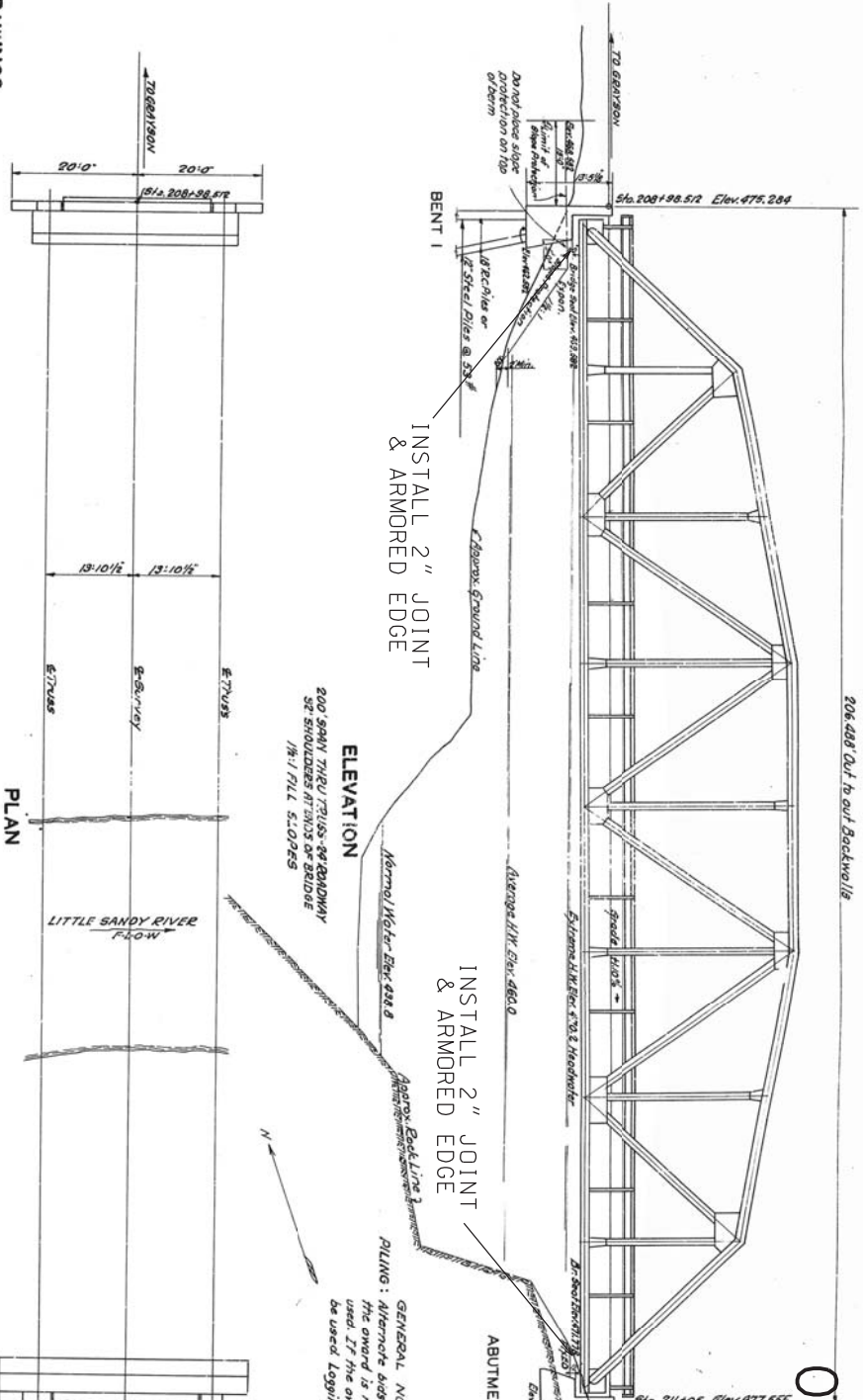
Project Line No	Bid Code	DESCRIPTION	Quantity	Unit
0205	02562	TEMPORARY SIGNS	149.00	SQFT
0210	02650	MAINTAIN & CONTROL TRAFFIC - APPLIES TO 103B00023N	1.00	LS
0215	02653	LANE CLOSURE	2.00	EACH
0220	03299	ARMORED EDGE FOR CONCRETE	40.00	LF
0225	03300	ELIMINATE TRANSVERSE JOINT	23.30	LF
0230	03304	BRIDGE OVERLAY APPROACH PAVEMENT	444.00	SQYD
0235	04933	TEMP SIGNAL 2 PHASE	1.00	EACH
0240	06514	PAVE STRIPING-PERM PAINT-4 IN	1,144.00	LF
0245	06549	PAVE STRIPING-TEMP REM TAPE-B	500.00	LF
0250	06550	PAVE STRIPING-TEMP REM TAPE-W	1,000.00	LF
0255	06551	PAVE STRIPING-TEMP REM TAPE-Y	2,000.00	LF
0260	08150	STEEL REINFORCEMENT	567.80	LB
0265	08504	EPOXY SAND SLURRY	66.90	SQYD
0270	08510	REM EPOXY BIT FOREIGN OVERLAY - EXISTING ASPHALT OVERLAY VARIES BETWEEN 6" - 12"	191.00	SQYD
0275	08526	CONC CLASS M FULL DEPTH PATCH	10.00	CUYD
0280	08534	CONCRETE OVERLAY-LATEX	8.00	CUYD
0285	08549	BLAST CLEANING	258.00	SQYD
0290	22146EN	CONCRETE PATCHING REPAIR	20.00	SQFT
0295	24094EC	PARTIAL DEPTH PATCHING	5.30	CUYD
0300	02569	DEMOBILIZATION	1.00	LS

DESIGNED BY: KDC	CHECKED BY: OLP	DATE: 3/97	REVIEWED: For Alternate Pile bid	DATE: 3/97
TRACED BY: GIBB	CHECKED BY:	DATE: 1-97	REVIEWED:	DATE:

- LIST OF DRAWINGS**
- LAYOUT
  - END BENT 1
  - ABUTMENT 2
  - STRESS SHEET
  - TRUSS DETAILS
  - TRUSS DETAILS & SHOES
  - TRUSS DETAILS
  - EXPANSION DEVICE & HANDRAIL
  - SLAB DETAILS
  - BORINGS
  - C 351 EXPJ MATERIAL & COPPER STRIP
  - 15'-R.C. PILES
  - MATCH MARKING DIAGRAM

**ESTIMATE OF QUANTITIES**

SUPERSTRUCTURE CONTRACT		SUBSTRUCTURE CONTRACT	
Structural Steel	2,500 Lbs	Concrete	1,200 cu yd
Reinforcement	1,500 Lbs	Formwork	1,000 sq ft
Truss Members	1,200 Lbs	Excavation	500 cu yd
Truss Details	800 Lbs	Foundation	1,500 sq ft
Truss Shoes	600 Lbs	Backfill	1,000 cu yd
Expansion Device	1,000 Lbs	Handrail	1,000 Lbs
Slab Details	1,000 Lbs	Handrail	1,000 Lbs
Borings	1,000 Lbs	Handrail	1,000 Lbs
C 351 Expj Material	1,000 Lbs	Handrail	1,000 Lbs
15'-R.C. Piles	1,000 Lbs	Handrail	1,000 Lbs
Match Marking Diagram	1,000 Lbs	Handrail	1,000 Lbs



**GENERAL NOTES**

1. SPECIFICATIONS: Kentucky Department of Highways (1945 Standard with Amendments)

2. DESIGN SPECIFICATIONS: AASHTO, 1944 Specifications for Highway Bridges

3. CONCRETE: Class 1 Concrete to be used throughout.

4. REINFORCEMENT: Dimensions shown from face of concrete are clear dimensions. Dimensions shown from center of reinforcement are center-to-center dimensions.

5. BENT 1: See sheet 1 for Foundation Note and Specifications.

6. ABUTMENT 2: See sheet 2 for Foundation Note and Specifications.

7. PILING: Alternate bids will be received on concrete and steel piling. If the owner is made on concrete piling, concrete specifications will be used. If the owner is made on steel piling, steel specifications will be used. Logging as shown on Sheet Drawing 17 will be required.

8. GENERAL NOTE: (Continued)

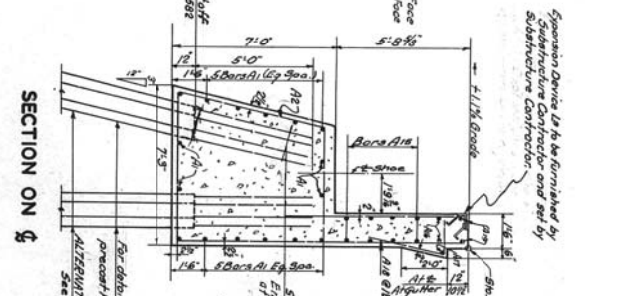
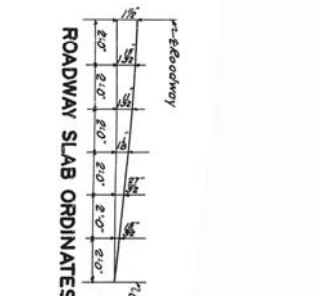
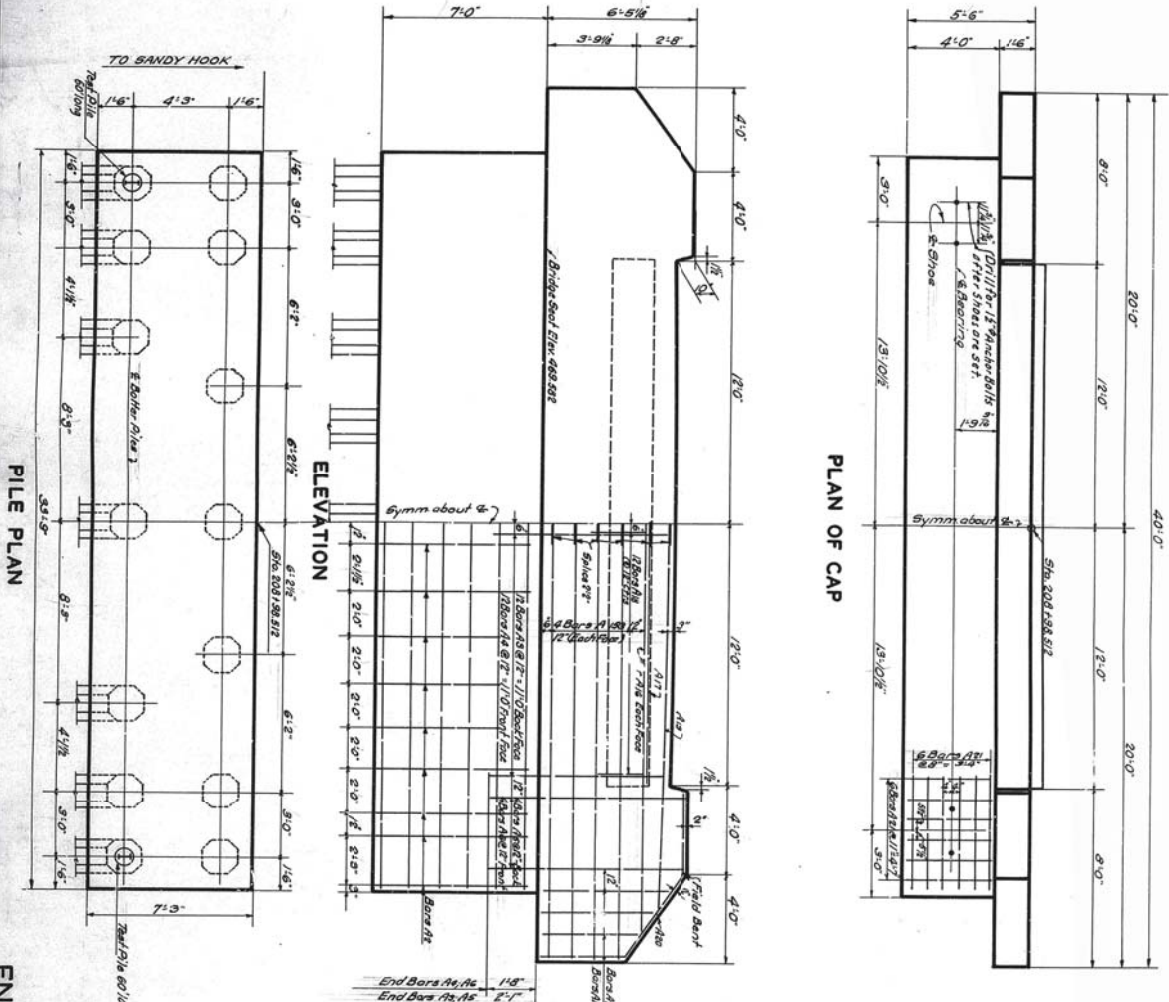
9. PILING: Alternate bids will be received on concrete and steel piling. If the owner is made on concrete piling, concrete specifications will be used. If the owner is made on steel piling, steel specifications will be used. Logging as shown on Sheet Drawing 17 will be required.

**COMMONWEALTH OF KENTUCKY**  
DEPARTMENT OF HIGHWAYS  
COUNTY OF RANDOLPH  
GRAYSON - SANDY HOOK  
PROJECT NO. 52.68(7)  
STATION 210+01.756  
BRIDGE NUMBER 41 P. 22-68-5  
SHEET NO. 6684

CONTRACT	SHEETS	TOTAL NO. OF SHEETS	
SUBSTRUCTURE	1-2-3-10-30-37-38	17	
SUPERSTRUCTURE	4-5-6-7-8-9-11-12-13-14-15-16-17-18-19-20-21-22-23-24-25-26-27-28-29-30-31-32-33-34-35-36-39-40-41-42-43-44-45-46-47-48-49-50-51-52-53-54-55-56-57-58-59-60-61-62-63-64-65-66-67-68-69-70-71-72-73-74-75-76-77-78-79-80-81-82-83-84-85-86-87-88-89-90-91-92-93-94-95-96-97-98-99-100-101-102-103-104-105-106-107-108-109-110-111-112-113-114-115-116-117-118-119-120-121-122-123-124-125-126-127-128-129-130-131-132-133-134-135-136-137-138-139-140-141-142-143-144-145-146-147-148-149-150-151-152-153-154-155-156-157-158-159-160-161-162-163-164-165-166-167-168-169-170-171-172-173-174-175-176-177-178-179-180-181-182-183-184-185-186-187-188-189-190-191-192-193-194-195-196-197-198-199-200-201-202-203-204-205-206-207-208-209-210-211-212-213-214-215-216-217-218-219-220-221-222-223-224-225-226-227-228-229-230-231-232-233-234-235-236-237-238-239-240-241-242-243-244-245-246-247-248-249-250-251-252-253-254-255-256-257-258-259-260-261-262-263-264-265-266-267-268-269-270-271-272-273-274-275-276-277-278-279-280-281-282-283-284-285-286-287-288-289-290-291-292-293-294-295-296-297-298-299-300-301-302-303-304-305-306-307-308-309-310-311-312-313-314-315-316-317-318-319-320-321-322-323-324-325-326-327-328-329-330-331-332-333-334-335-336-337-338-339-340-341-342-343-344-345-346-347-348-349-350-351-352-353-354-355-356-357-358-359-360-361-362-363-364-365-366-367-368-369-370-371-372-373-374-375-376-377-378-379-380-381-382-383-384-385-386-387-388-389-390-391-392-393-394-395-396-397-398-399-400-401-402-403-404-405-406-407-408-409-410-411-412-413-414-415-416-417-418-419-420-421-422-423-424-425-426-427-428-429-430-431-432-433-434-435-436-437-438-439-440-441-442-443-444-445-446-447-448-449-450-451-452-453-454-455-456-457-458-459-460-461-462-463-464-465-466-467-468-469-470-471-472-473-474-475-476-477-478-479-480-481-482-483-484-485-486-487-488-489-490-491-492-493-494-495-496-497-498-499-500-501-502-503-504-505-506-507-508-509-510-511-512-513-514-515-516-517-518-519-520-521-522-523-524-525-526-527-528-529-530-531-532-533-534-535-536-537-538-539-540-541-542-543-544-545-546-547-548-549-550-551-552-553-554-555-556-557-558-559-560-561-562-563-564-565-566-567-568-569-570-571-572-573-574-575-576-577-578-579-580-581-582-583-584-585-586-587-588-589-590-591-592-593-594-595-596-597-598-599-600-601-602-603-604-605-606-607-608-609-610-611-612-613-614-615-616-617-618-619-620-621-622-623-624-625-626-627-628-629-630-631-632-633-634-635-636-637-638-639-640-641-642-643-644-645-646-647-648-649-650-651-652-653-654-655-656-657-658-659-660-661-662-663-664-665-666-667-668-669-670-671-672-673-674-675-676-677-678-679-680-681-682-683-684-685-686-687-688-689-690-691-692-693-694-695-696-697-698-699-700-701-702-703-704-705-706-707-708-709-710-711-712-713-714-715-716-717-718-719-720-721-722-723-724-725-726-727-728-729-730-731-732-733-734-735-736-737-738-739-740-741-742-743-744-745-746-747-748-749-750-751-752-753-754-755-756-757-758-759-760-761-762-763-764-765-766-767-768-769-770-771-772-773-774-775-776-777-778-779-780-781-782-783-784-785-786-787-788-789-790-791-792-793-794-795-796-797-798-799-800-801-802-803-804-805-806-807-808-809-810-811-812-813-814-815-816-817-818-819-820-821-822-823-824-825-826-827-828-829-830-831-832-833-834-835-836-837-838-839-840-841-842-843-844-845-846-847-848-849-850-851-852-853-854-855-856-857-858-859-860-861-862-863-864-865-866-867-868-869-870-871-872-873-874-875-876-877-878-879-880-881-882-883-884-885-886-887-888-889-890-891-892-893-894-895-896-897-898-899-900-901-902-903-904-905-906-907-908-909-910-911-912-913-914-915-916-917-918-919-920-921-922-923-924-925-926-927-928-929-930-931-932-933-934-935-936-937-938-939-940-941-942-943-944-945-946-947-948-949-950-951-952-953-954-955-956-957-958-959-960-961-962-963-964-965-966-967-968-969-970-971-972-973-974-975-976-977-978-979-980-981-982-983-984-985-986-987-988-989-990-991-992-993-994-995-996-997-998-999-1000	15	52

022B00017N

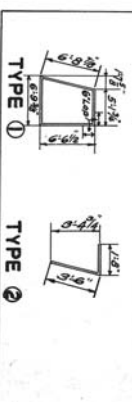
DESIGNED BY: <u>K.D. GARY</u>	CHECKED BY: <u>Edell</u>	DATE: _____	REVIEWED BY: <u>For Alternate Pile Bid</u>	DATE: <u>3/4/9</u>
DRAWN BY: _____	CHECKED BY: _____	DATE: _____	REVIEWED BY: _____	DATE: _____
TRACED BY: <u>Gibbs/Hay/66</u>	CHECKED BY: _____	DATE: <u>2-24</u>	REVIEWED BY: _____	DATE: _____



Spigot Device to be furnished by Substructure Contractor and set by Substructure Contractor.

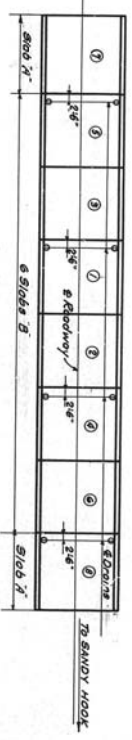
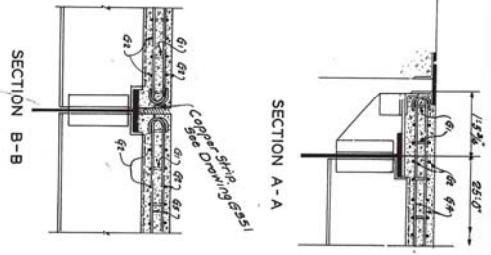
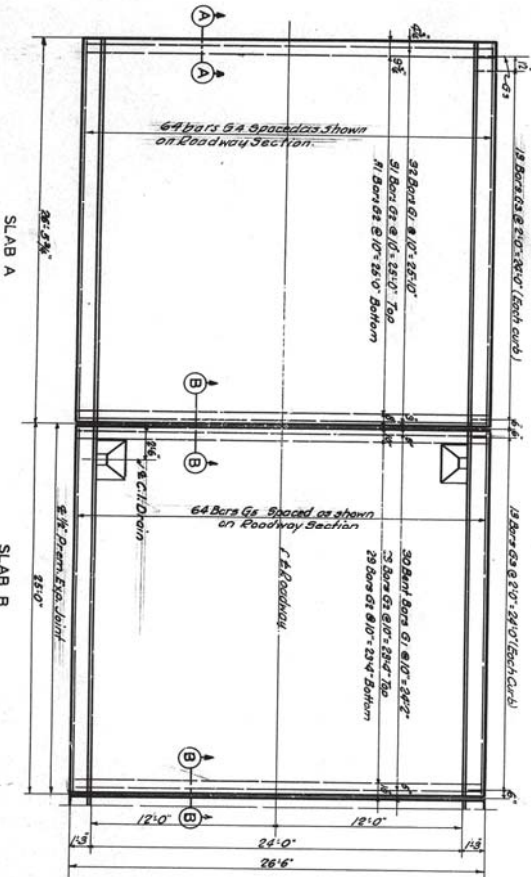
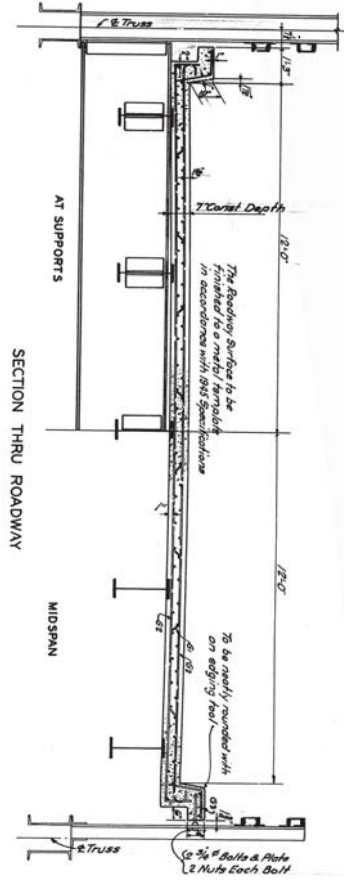
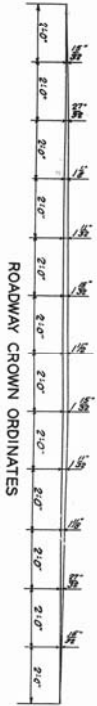
NO.	DESCRIPTION	QTY	UNIT	WEIGHT (LBS)	WEIGHT (TONS)
A1	16 #10 L	17.5	Longitudinal in Cap	17.5	17.5
A2	16 #10 S	17.5	Vertical in Backfill	17.5	17.5
A3	16 #10 V	17.5	Vertical in Backfill	17.5	17.5
A4	8 #10 S	17.5	Vertical in Backfill	17.5	17.5
A5	8 #10 V	17.5	Vertical in Backfill	17.5	17.5
A6	2 #10 S	17.5	Vertical in Backfill	17.5	17.5
A7	2 #10 V	17.5	Vertical in Backfill	17.5	17.5
A8	2 #10 S	17.5	Vertical in Backfill	17.5	17.5
A9	2 #10 V	17.5	Vertical in Backfill	17.5	17.5
A10	2 #10 S	17.5	Vertical in Backfill	17.5	17.5
A11	2 #10 V	17.5	Vertical in Backfill	17.5	17.5
A12	2 #10 S	17.5	Vertical in Backfill	17.5	17.5
A13	2 #10 V	17.5	Vertical in Backfill	17.5	17.5
A14	2 #10 S	17.5	Vertical in Backfill	17.5	17.5
A15	2 #10 V	17.5	Vertical in Backfill	17.5	17.5
A16	2 #10 S	17.5	Vertical in Backfill	17.5	17.5
A17	2 #10 V	17.5	Vertical in Backfill	17.5	17.5
A18	2 #10 S	17.5	Vertical in Backfill	17.5	17.5
A19	2 #10 V	17.5	Vertical in Backfill	17.5	17.5
A20	2 #10 S	17.5	Vertical in Backfill	17.5	17.5
A21	2 #10 V	17.5	Vertical in Backfill	17.5	17.5

022B00017N



Concrete Class A	6750 LB
Reinforcement	910 LBS
18" Casing (Forming)	85 LBS
18" Casing (Driving)	75 LBS

Bridge over Little Sandy River  
COMMONWEALTH OF KENTUCKY  
DEPARTMENT OF HIGHWAYS  
FRANKFORT COUNTY  
CARTER  
GRAYSON-SANDY HOOK  
PROJECT NO. 572  
DATE: 2/17/91  
BRIDGE NUMBER: 5655



**BILL OF REINFORCEMENT (TOTAL)**

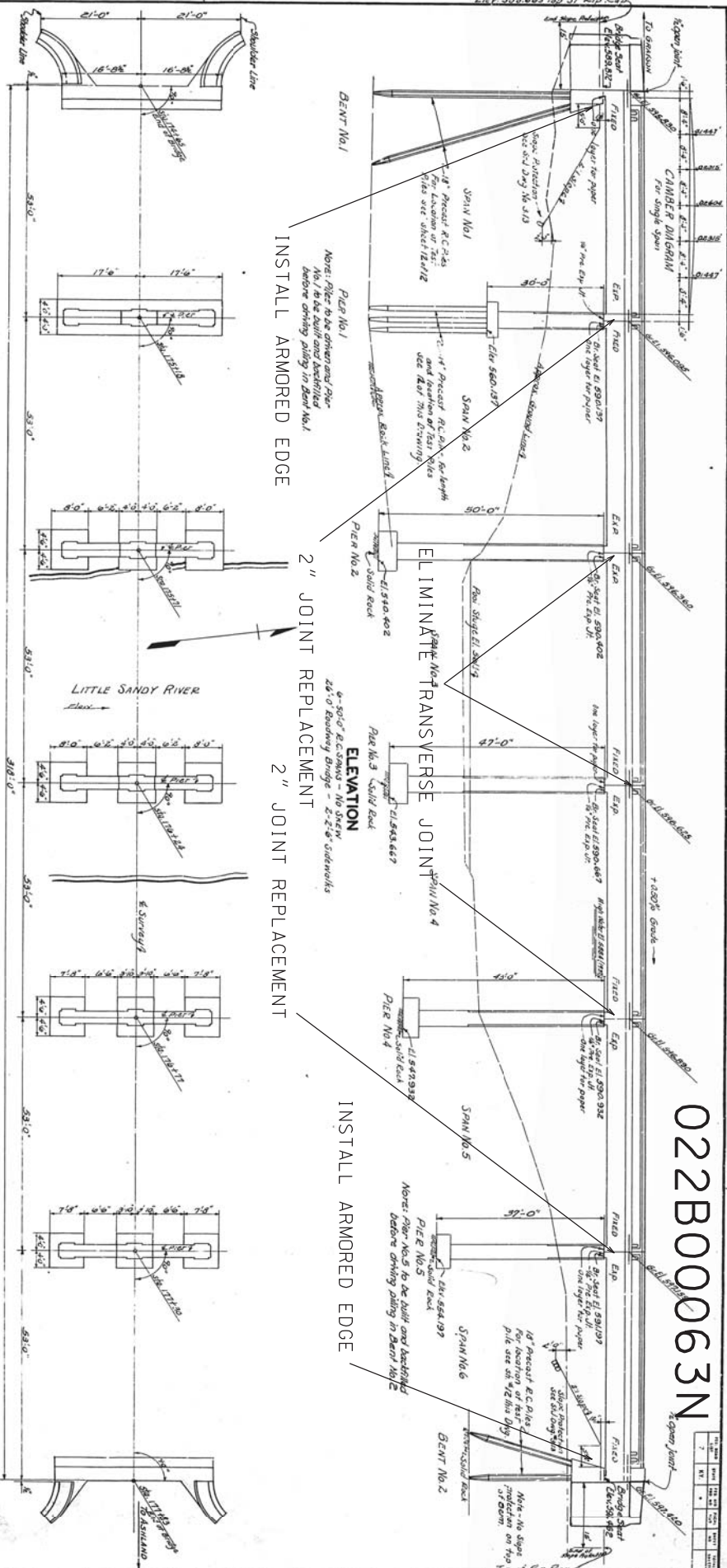
MARK	TYPE	NO	SIZE	LENGTH	LOCATION	QTY	WT	WT	WT	WT
G.1	①	24	#3	17.0	TRANS. IN SLAB	24	1.08	25.92		
G.2	②	42	#3	3.0	COR.	42	0.38	15.96		
G.3	③	12	#3	3.0	LONGITUDINAL IN SLAB	12	0.38	4.56		
G.4	④	12	#3	3.0		12	0.38	4.56		
G.5		30	#3	25.0		30	1.08	32.40		
						<b>TOTAL</b>		<b>83.34</b>		

**ESTIMATE OF QUANTITIES**  
Concrete Class # 1943 C-100  
Reinforcement 29490 Lbs.

**SLABS**

Bridge over Little Sandy River Sheet 19  
COMMONWEALTH OF KENTUCKY  
DEPARTMENT OF HIGHWAYS  
COUNTY OF  
**CARTER**  
GRAYSON-SANDY HOOK ROAD  
STATION 2107+01.796  
PROJECT NO. 572.68(3)  
BRIDGE NUMBER 8164

DESIGNED BY *E. Vaughan, Jr.* CHECKED BY *E. Vaughan, Jr.* DATE *11/24/24*  
 REVISED *Camber diagram* *E.V.Jr.* DATE *11/24/24*  
 TRACED BY *E. Vaughan, Jr.* CHECKED BY *E. Vaughan, Jr.* DATE *11/24/24*



**REFERENCES - ESTIMATE OF QUANTITIES**

ITEM	QTY	UNIT	AMOUNT	UNIT PRICE	TOTAL
1724	1	CONCRETE	27980	1.00	27980
1725	1	STEEL	149	1.00	149
1726	1	FORMWORK	149	1.00	149
1727	1	PAINT	149	1.00	149
1728	1	REINFORCEMENT	149	1.00	149
1729	1	CONCRETE	149	1.00	149
1730	1	STEEL	149	1.00	149
1731	1	FORMWORK	149	1.00	149
1732	1	PAINT	149	1.00	149
1733	1	REINFORCEMENT	149	1.00	149
1734	1	CONCRETE	149	1.00	149
1735	1	STEEL	149	1.00	149
1736	1	FORMWORK	149	1.00	149
1737	1	PAINT	149	1.00	149
1738	1	REINFORCEMENT	149	1.00	149
1739	1	CONCRETE	149	1.00	149
1740	1	STEEL	149	1.00	149
1741	1	FORMWORK	149	1.00	149
1742	1	PAINT	149	1.00	149
1743	1	REINFORCEMENT	149	1.00	149
1744	1	CONCRETE	149	1.00	149
1745	1	STEEL	149	1.00	149
1746	1	FORMWORK	149	1.00	149
1747	1	PAINT	149	1.00	149
1748	1	REINFORCEMENT	149	1.00	149
1749	1	CONCRETE	149	1.00	149
1750	1	STEEL	149	1.00	149
1751	1	FORMWORK	149	1.00	149
1752	1	PAINT	149	1.00	149
1753	1	REINFORCEMENT	149	1.00	149
1754	1	CONCRETE	149	1.00	149
1755	1	STEEL	149	1.00	149
1756	1	FORMWORK	149	1.00	149
1757	1	PAINT	149	1.00	149
1758	1	REINFORCEMENT	149	1.00	149
1759	1	CONCRETE	149	1.00	149
1760	1	STEEL	149	1.00	149
1761	1	FORMWORK	149	1.00	149
1762	1	PAINT	149	1.00	149
1763	1	REINFORCEMENT	149	1.00	149
1764	1	CONCRETE	149	1.00	149
1765	1	STEEL	149	1.00	149
1766	1	FORMWORK	149	1.00	149
1767	1	PAINT	149	1.00	149
1768	1	REINFORCEMENT	149	1.00	149
1769	1	CONCRETE	149	1.00	149
1770	1	STEEL	149	1.00	149
1771	1	FORMWORK	149	1.00	149
1772	1	PAINT	149	1.00	149
1773	1	REINFORCEMENT	149	1.00	149
1774	1	CONCRETE	149	1.00	149
1775	1	STEEL	149	1.00	149
1776	1	FORMWORK	149	1.00	149
1777	1	PAINT	149	1.00	149
1778	1	REINFORCEMENT	149	1.00	149
1779	1	CONCRETE	149	1.00	149
1780	1	STEEL	149	1.00	149
1781	1	FORMWORK	149	1.00	149
1782	1	PAINT	149	1.00	149
1783	1	REINFORCEMENT	149	1.00	149
1784	1	CONCRETE	149	1.00	149
1785	1	STEEL	149	1.00	149
1786	1	FORMWORK	149	1.00	149
1787	1	PAINT	149	1.00	149
1788	1	REINFORCEMENT	149	1.00	149
1789	1	CONCRETE	149	1.00	149
1790	1	STEEL	149	1.00	149
1791	1	FORMWORK	149	1.00	149
1792	1	PAINT	149	1.00	149
1793	1	REINFORCEMENT	149	1.00	149
1794	1	CONCRETE	149	1.00	149
1795	1	STEEL	149	1.00	149
1796	1	FORMWORK	149	1.00	149
1797	1	PAINT	149	1.00	149
1798	1	REINFORCEMENT	149	1.00	149
1799	1	CONCRETE	149	1.00	149
1800	1	STEEL	149	1.00	149

**PLAN**

(Departmental Estimate)

**BILL OF INCIDENTAL MATERIAL**

ITEM	QTY	UNIT	AMOUNT
1724	1	CONCRETE	27980
1725	1	STEEL	149
1726	1	FORMWORK	149
1727	1	PAINT	149
1728	1	REINFORCEMENT	149
1729	1	CONCRETE	149
1730	1	STEEL	149
1731	1	FORMWORK	149
1732	1	PAINT	149
1733	1	REINFORCEMENT	149
1734	1	CONCRETE	149
1735	1	STEEL	149
1736	1	FORMWORK	149
1737	1	PAINT	149
1738	1	REINFORCEMENT	149
1739	1	CONCRETE	149
1740	1	STEEL	149
1741	1	FORMWORK	149
1742	1	PAINT	149
1743	1	REINFORCEMENT	149
1744	1	CONCRETE	149
1745	1	STEEL	149
1746	1	FORMWORK	149
1747	1	PAINT	149
1748	1	REINFORCEMENT	149
1749	1	CONCRETE	149
1750	1	STEEL	149
1751	1	FORMWORK	149
1752	1	PAINT	149
1753	1	REINFORCEMENT	149
1754	1	CONCRETE	149
1755	1	STEEL	149
1756	1	FORMWORK	149
1757	1	PAINT	149
1758	1	REINFORCEMENT	149
1759	1	CONCRETE	149
1760	1	STEEL	149
1761	1	FORMWORK	149
1762	1	PAINT	149
1763	1	REINFORCEMENT	149
1764	1	CONCRETE	149
1765	1	STEEL	149
1766	1	FORMWORK	149
1767	1	PAINT	149
1768	1	REINFORCEMENT	149
1769	1	CONCRETE	149
1770	1	STEEL	149
1771	1	FORMWORK	149
1772	1	PAINT	149
1773	1	REINFORCEMENT	149
1774	1	CONCRETE	149
1775	1	STEEL	149
1776	1	FORMWORK	149
1777	1	PAINT	149
1778	1	REINFORCEMENT	149
1779	1	CONCRETE	149
1780	1	STEEL	149
1781	1	FORMWORK	149
1782	1	PAINT	149
1783	1	REINFORCEMENT	149
1784	1	CONCRETE	149
1785	1	STEEL	149
1786	1	FORMWORK	149
1787	1	PAINT	149
1788	1	REINFORCEMENT	149
1789	1	CONCRETE	149
1790	1	STEEL	149
1791	1	FORMWORK	149
1792	1	PAINT	149
1793	1	REINFORCEMENT	149
1794	1	CONCRETE	149
1795	1	STEEL	149
1796	1	FORMWORK	149
1797	1	PAINT	149
1798	1	REINFORCEMENT	149
1799	1	CONCRETE	149
1800	1	STEEL	149

**GENERAL NOTE**

See Specifications, Kentucky Department of Highways (1985 Standard) with amendments and additions, Class 1, Concrete to be used in the construction of this project. See also Class 2, to be used in the construction of this project.

Reinforcement: Dimension shown from face of concrete to bars, clear distance except as otherwise shown. Dimensions for bar spacing are distances center to center of bars. See Emergency Provision No. 10.

Detail Notes: All exposed edges shall be finished. Unless otherwise noted, the finish shall be as shown on the drawings.

Formwork: The bottom of the concrete shall be finished to grade on the survey. The formwork shall be supported by the soil and the concrete shall be placed and finished in accordance with the plan and specifications.

Placement: The full material shall be placed continuously in front and back of the bents. Expansion joints shall be placed in accordance with the specifications. The concrete shall be finished to grade on the survey. The concrete shall be finished to grade on the survey.

Foundation: The foundation shall be finished to grade on the survey. The foundation shall be finished to grade on the survey.

Notes: No spans to be built and backfilled before driving piling in Bent No. 2.

DESIGNER: *ASHLAND*

CHECKER: *ASHLAND*

DATE: *11/24/24*

PROJECT NO. *22-248-1*

STATION *3+17.41*

COMMONWEALTH OF KENTUCKY  
DEPARTMENT OF HIGHWAYS  
PROJECT OF  
**CARTER**  
GRAISON-ASHLAND ROAD

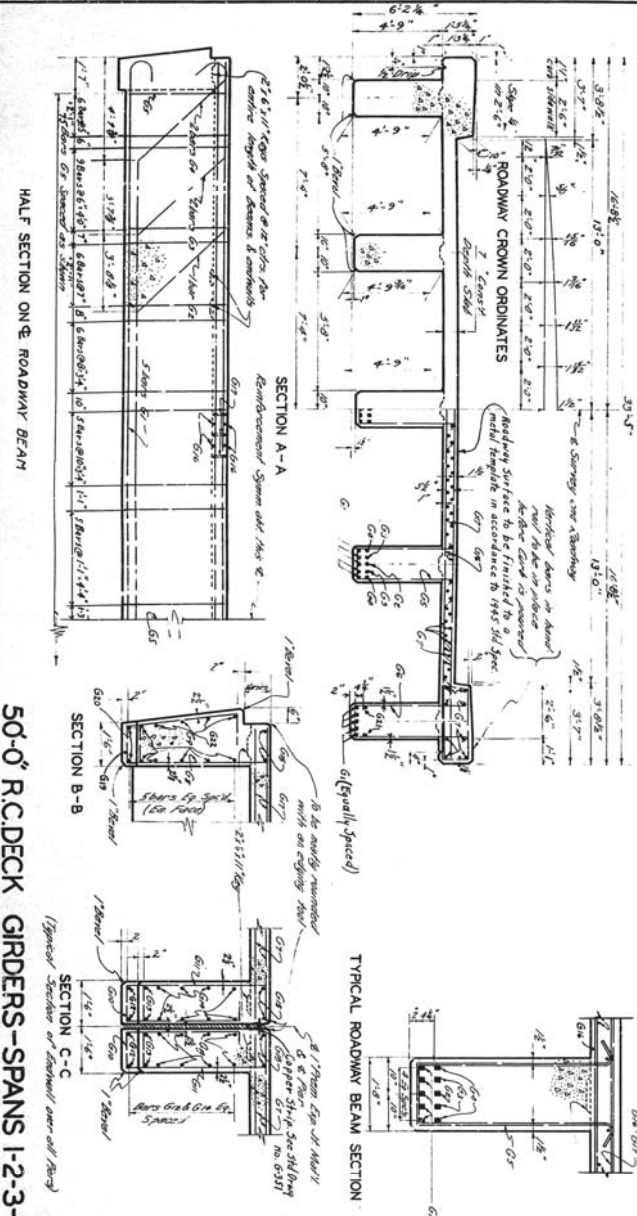
PROJECT NO. *22-248-1*

DATE *11/24/24*

STATION *3+17.41*

022B00063N

DESIGNED BY: J. O. SMITH	CHECKED BY: A. DEER	DATE: 5-12	REVISION:	DATE:
DETAILED BY:	CHECKED BY:	DATE:	REVISION:	DATE:
TRACED BY:	REVIEWED BY:	DATE:	REVISION:	DATE:

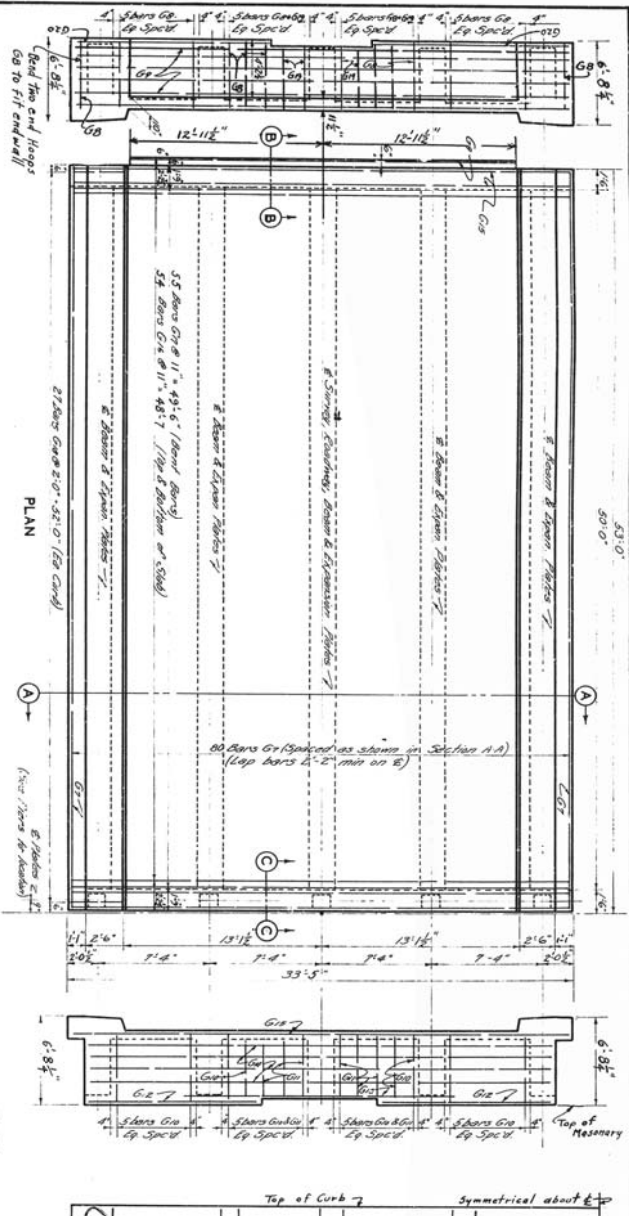


**ESTIMATE OF QUANTITIES**

Concrete Class 2"	329W 1	1438 Cu Yds
Reinforcement		27380 Lbs
Concrete Class 2"	329W 2	141.9 Cu Yds
Reinforcement		27380 Lbs
Concrete Class 2"	329W 3	141.9 Cu Yds
Reinforcement		27380 Lbs
Concrete Class 2"	329W 4	141.9 Cu Yds
Reinforcement		27380 Lbs
Concrete Class 2"	329W 5	141.9 Cu Yds
Reinforcement		27380 Lbs
Concrete Class 2"	329W 6	1438 Cu Yds
Reinforcement		27380 Lbs

**COMMONWEALTH OF KENTUCKY  
DEPARTMENT OF HIGHWAYS  
BRIDGE OVER LITTLE SANDY RIVER  
SHEET 9 OF 12  
CARTER  
FRANKFORT  
GRAVSON-ASHLAND**

Station 176+24  
Project No. 8256



**HALF SECTION ON E OUTSIDE BEAM**

Bar No.	Bar Size	Bar Spacing	Bar Length	Bar Quantity	Bar Weight
1	5 Bars G10	12" Spaced	12'-5.0"	4	143.8
2	2 Bars G10	12" Spaced	12'-5.0"	4	143.8
3	10 Bars G10	6" Spaced	6'-6.0"	4	143.8
4	12 Bars G10	5" Spaced	5'-0"	4	143.8
5	13 Bars G10	6" Spaced	6'-7.6"	4	143.8

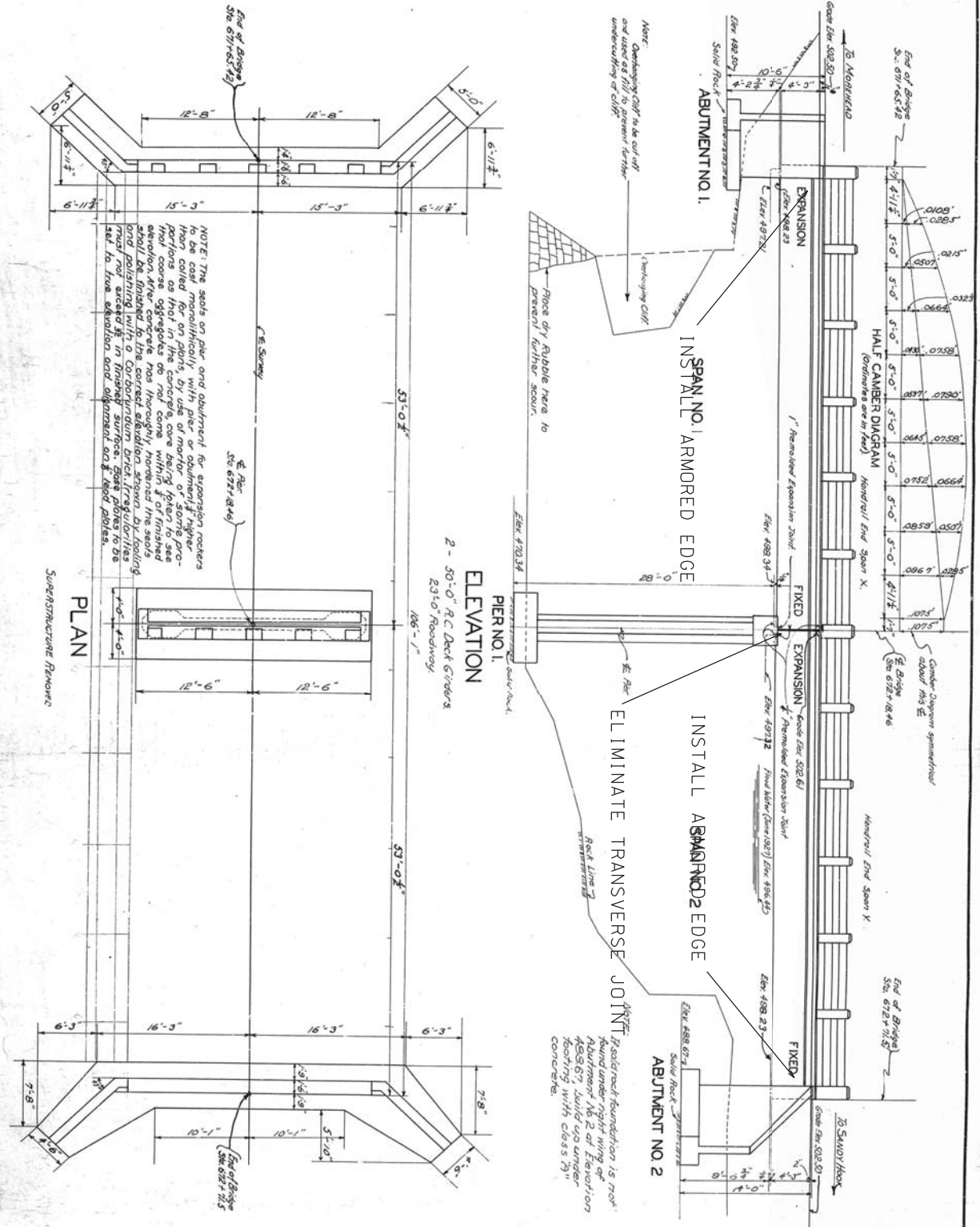
**BILL OF REINFORCEMENT**

Bar No.	Bar Size	Bar Spacing	Bar Length	Bar Quantity	Bar Weight
1	5 Bars G10	12" Spaced	12'-5.0"	4	143.8
2	2 Bars G10	12" Spaced	12'-5.0"	4	143.8
3	10 Bars G10	6" Spaced	6'-6.0"	4	143.8
4	12 Bars G10	5" Spaced	5'-0"	4	143.8
5	13 Bars G10	6" Spaced	6'-7.6"	4	143.8

022B00063N



DESIGNED BY A.E. Bloesch, DATE 5/23/82	REVIEWED BY DATE
CHECKED BY J. J. A., DATE 5-23-82	REVIEWED BY DATE



NOTE: The soils on pier and abutment for expansion rockers to be cast monolithically with pier or abutment. However, they may be cast in place, by use of mortar or some proportion as that in the concrete, care being taken to see that the coarse aggregate do not come within 1/2" of finished grade. The concrete should be thoroughly troweled. The soils should be finished with a Corbiumum brick finish. The soils must not exceed 1/2" in finished surface. Gate plates to be cast to true elevation and alignment on 1/2" thick plates.

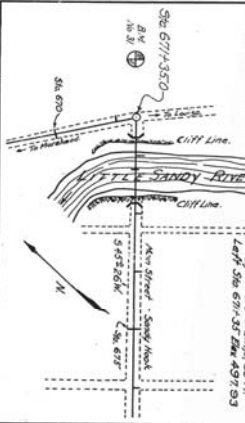
NOTE: Rocker foundation is not found under right wing of Abutment No. 2 of Elevation 488.67. Build up under footing with class 79" concrete.

# 032B00006N

## REFERENCES

For details of 30'-0" R.C. Deck Girders see Sheet 2 of 4.  
 For details of 20'-0" R.C. Abutment No. 1, see Sheet 3 of 4.  
 For details of 20'-0" R.C. Abutment No. 2, see Standard Drawing No. A-59.  
 For details of Abutment see Standard Drawing No. 17-B.

## SKETCH MAP



## GENERAL NOTE

**STRUCTURE:**  
 Class 1 concrete to be used throughout. Use of other materials to be used in Beams, Columns and Sills.  
 Class 'D' concrete to be used in Handrail and posts.  
 All dimensions from face of concrete to steel use clear distances. Reinforcement bars shall be spaced not farther apart than 30 diameters.  
**REINFORCEMENT:**  
 All dimensions from face of concrete to steel use clear distances. Reinforcement bars shall be spaced not farther apart than 30 diameters.  
**MATERIAL:**  
 The steel reinforcement to be furnished by contractor.  
**EXPANSION BEARINGS:**  
 Seals on pier and abutment for expansion rockers to be finished as noted.  
 Cast of red plates for expansion rockers to be finished in place bid per pound for rockers.  
 Where notes or references on Standard Plans conflict with 100 Specifications they shall be enlarged.

## TOTAL ESTIMATE OF QUANTITIES

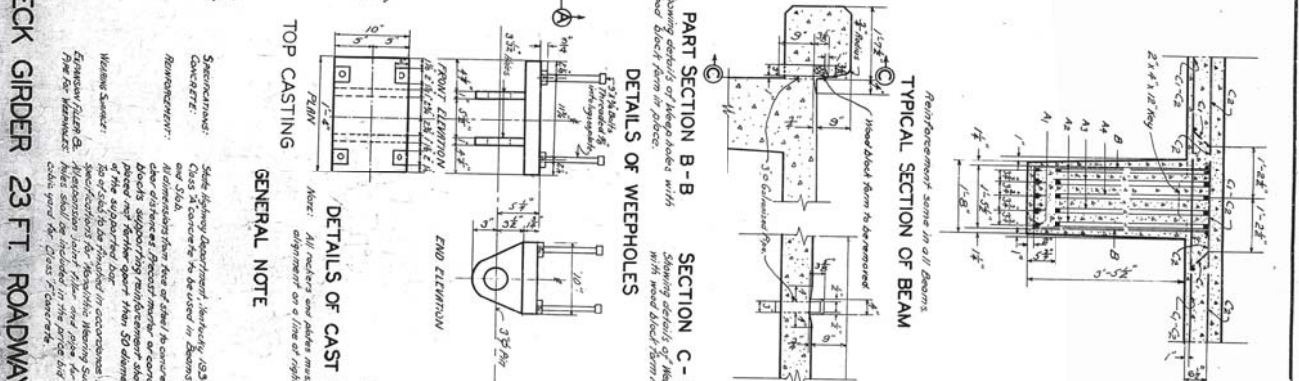
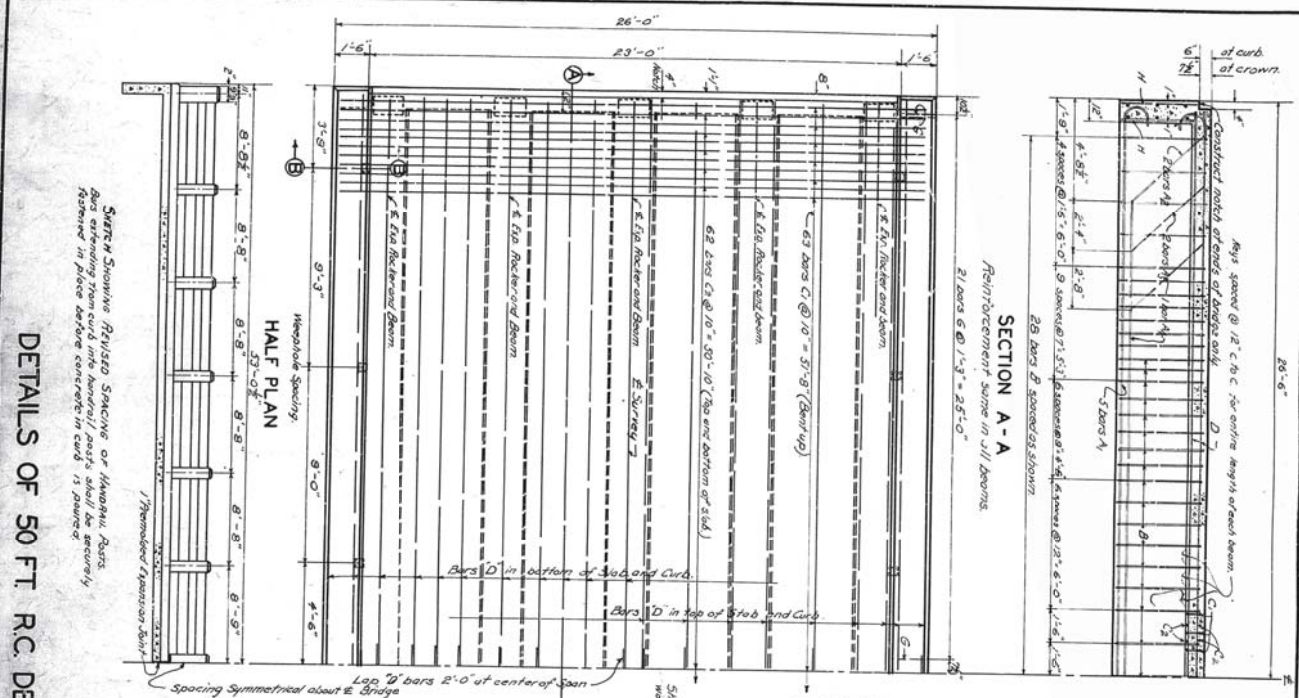
DESCRIPTION	QUANTITY	UNIT	PRICE
Concrete Class A <sub>1</sub> (in Substructure)	126.9	Cu yds	4.2
Concrete Class D <sub>1</sub> (in Superstructure)	2028	Cu yds	5.95
Reinforcement	59510	Lbs.	2.44
Cast Steel	240	Lbs.	1.95
Forged Steel	10	Lbs.	1.95
Expansion (27 Rock)	100	Cu yds	4.2
Excavation (71 Common)	40	Cu yds	1.59
Excavation (17 Common)	40	Cu yds	1.59
Dry Rubble Masonry	40	Cu yds	1.59

## COMMONWEALTH OF KENTUCKY

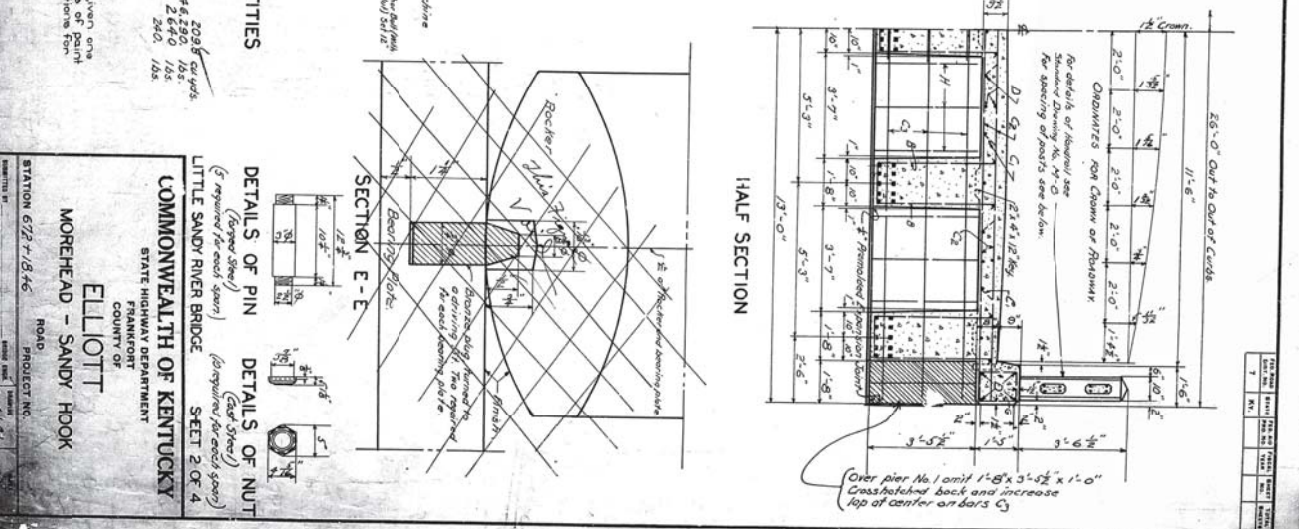
STATE HIGHWAY DEPARTMENT  
 COUNTY OF  
 PROJECT NO.  
 ROAD  
 MOREHEAD - SANDY HOOK

DATE: 10/12/82  
 DRAWN BY: [Signature]  
 CHECKED BY: [Signature]

DESIGNED BY C.K.H.	DATE	REVISED	DATE
TRACED BY D.E. R...	DATE	REVISED	DATE
CHECKED BY W.S. Todd	DATE	REVISED	DATE



BILL AND TYPES OF REINFORCEMENT	
Item No.	Description
1	1/2" x 12' Bars
2	3/4" x 12' Bars
3	1" x 12' Bars
4	1 1/4" x 12' Bars
5	1 1/2" x 12' Bars
6	2" x 12' Bars
7	2 1/2" x 12' Bars
8	3" x 12' Bars
9	3 1/2" x 12' Bars
10	4" x 12' Bars
11	4 1/2" x 12' Bars
12	5" x 12' Bars
13	5 1/2" x 12' Bars
14	6" x 12' Bars
15	6 1/2" x 12' Bars
16	7" x 12' Bars
17	7 1/2" x 12' Bars
18	8" x 12' Bars
19	8 1/2" x 12' Bars
20	9" x 12' Bars
21	9 1/2" x 12' Bars
22	10" x 12' Bars
23	10 1/2" x 12' Bars
24	11" x 12' Bars
25	11 1/2" x 12' Bars
26	12" x 12' Bars
27	12 1/2" x 12' Bars
28	13" x 12' Bars
29	13 1/2" x 12' Bars
30	14" x 12' Bars
31	14 1/2" x 12' Bars
32	15" x 12' Bars
33	15 1/2" x 12' Bars
34	16" x 12' Bars
35	16 1/2" x 12' Bars
36	17" x 12' Bars
37	17 1/2" x 12' Bars
38	18" x 12' Bars
39	18 1/2" x 12' Bars
40	19" x 12' Bars
41	19 1/2" x 12' Bars
42	20" x 12' Bars
43	20 1/2" x 12' Bars
44	21" x 12' Bars
45	21 1/2" x 12' Bars
46	22" x 12' Bars
47	22 1/2" x 12' Bars
48	23" x 12' Bars
49	23 1/2" x 12' Bars
50	24" x 12' Bars
51	24 1/2" x 12' Bars
52	25" x 12' Bars
53	25 1/2" x 12' Bars
54	26" x 12' Bars
55	26 1/2" x 12' Bars
56	27" x 12' Bars
57	27 1/2" x 12' Bars
58	28" x 12' Bars
59	28 1/2" x 12' Bars
60	29" x 12' Bars
61	29 1/2" x 12' Bars
62	30" x 12' Bars
63	30 1/2" x 12' Bars
64	31" x 12' Bars
65	31 1/2" x 12' Bars
66	32" x 12' Bars
67	32 1/2" x 12' Bars
68	33" x 12' Bars
69	33 1/2" x 12' Bars
70	34" x 12' Bars
71	34 1/2" x 12' Bars
72	35" x 12' Bars
73	35 1/2" x 12' Bars
74	36" x 12' Bars
75	36 1/2" x 12' Bars
76	37" x 12' Bars
77	37 1/2" x 12' Bars
78	38" x 12' Bars
79	38 1/2" x 12' Bars
80	39" x 12' Bars
81	39 1/2" x 12' Bars
82	40" x 12' Bars
83	40 1/2" x 12' Bars
84	41" x 12' Bars
85	41 1/2" x 12' Bars
86	42" x 12' Bars
87	42 1/2" x 12' Bars
88	43" x 12' Bars
89	43 1/2" x 12' Bars
90	44" x 12' Bars
91	44 1/2" x 12' Bars
92	45" x 12' Bars
93	45 1/2" x 12' Bars
94	46" x 12' Bars
95	46 1/2" x 12' Bars
96	47" x 12' Bars
97	47 1/2" x 12' Bars
98	48" x 12' Bars
99	48 1/2" x 12' Bars
100	49" x 12' Bars
101	49 1/2" x 12' Bars
102	50" x 12' Bars
103	50 1/2" x 12' Bars
104	51" x 12' Bars
105	51 1/2" x 12' Bars
106	52" x 12' Bars
107	52 1/2" x 12' Bars
108	53" x 12' Bars
109	53 1/2" x 12' Bars
110	54" x 12' Bars
111	54 1/2" x 12' Bars
112	55" x 12' Bars
113	55 1/2" x 12' Bars
114	56" x 12' Bars
115	56 1/2" x 12' Bars
116	57" x 12' Bars
117	57 1/2" x 12' Bars
118	58" x 12' Bars
119	58 1/2" x 12' Bars
120	59" x 12' Bars
121	59 1/2" x 12' Bars
122	60" x 12' Bars
123	60 1/2" x 12' Bars
124	61" x 12' Bars
125	61 1/2" x 12' Bars
126	62" x 12' Bars
127	62 1/2" x 12' Bars
128	63" x 12' Bars
129	63 1/2" x 12' Bars
130	64" x 12' Bars
131	64 1/2" x 12' Bars
132	65" x 12' Bars
133	65 1/2" x 12' Bars
134	66" x 12' Bars
135	66 1/2" x 12' Bars
136	67" x 12' Bars
137	67 1/2" x 12' Bars
138	68" x 12' Bars
139	68 1/2" x 12' Bars
140	69" x 12' Bars
141	69 1/2" x 12' Bars
142	70" x 12' Bars
143	70 1/2" x 12' Bars
144	71" x 12' Bars
145	71 1/2" x 12' Bars
146	72" x 12' Bars
147	72 1/2" x 12' Bars
148	73" x 12' Bars
149	73 1/2" x 12' Bars
150	74" x 12' Bars
151	74 1/2" x 12' Bars
152	75" x 12' Bars
153	75 1/2" x 12' Bars
154	76" x 12' Bars
155	76 1/2" x 12' Bars
156	77" x 12' Bars
157	77 1/2" x 12' Bars
158	78" x 12' Bars
159	78 1/2" x 12' Bars
160	79" x 12' Bars
161	79 1/2" x 12' Bars
162	80" x 12' Bars
163	80 1/2" x 12' Bars
164	81" x 12' Bars
165	81 1/2" x 12' Bars
166	82" x 12' Bars
167	82 1/2" x 12' Bars
168	83" x 12' Bars
169	83 1/2" x 12' Bars
170	84" x 12' Bars
171	84 1/2" x 12' Bars
172	85" x 12' Bars
173	85 1/2" x 12' Bars
174	86" x 12' Bars
175	86 1/2" x 12' Bars
176	87" x 12' Bars
177	87 1/2" x 12' Bars
178	88" x 12' Bars
179	88 1/2" x 12' Bars
180	89" x 12' Bars
181	89 1/2" x 12' Bars
182	90" x 12' Bars
183	90 1/2" x 12' Bars
184	91" x 12' Bars
185	91 1/2" x 12' Bars
186	92" x 12' Bars
187	92 1/2" x 12' Bars
188	93" x 12' Bars
189	93 1/2" x 12' Bars
190	94" x 12' Bars
191	94 1/2" x 12' Bars
192	95" x 12' Bars
193	95 1/2" x 12' Bars
194	96" x 12' Bars
195	96 1/2" x 12' Bars
196	97" x 12' Bars
197	97 1/2" x 12' Bars
198	98" x 12' Bars
199	98 1/2" x 12' Bars
200	99" x 12' Bars
201	99 1/2" x 12' Bars
202	100" x 12' Bars



Over pier No. 1 omit 1'-8" x 3'-6" x 1'-0" crosshatched back and increase top of center on bars C<sub>3</sub>

**DETAILS OF 50 FT R.C. DECK GIRDER 23 FT ROADWAY**

START SHOWING REINFORCED STAINLESS OR INVARIAL BARS REMOVED FROM CURB AND APPROXIMATELY SHALL BE SECURELY REMOVED IN PLACE BEFORE CONCRETE IS PLACED.

**GENERAL NOTE**

CONCRETE: Class 4000 (Designation, Minimum 4000) Class 4000 concrete to be used in beams, curbs and slabs. All dimensions from face of steel in concrete are clear dimensions. Precast number or concrete blocks supporting reinforcement shall be of the same strength as concrete. Reinforcement shall be placed in accordance with specifications for Reinforcing Steel Bars. Plan for expansion joint shall be shown on the drawings.

**ESTIMATE OF QUANTITIES**

(For Two Spans)

Concrete, Class 4000 (Normal weight) 2096 cu yds  
 Reinforcement, 100 lbs/yd 46,290 lbs  
 Expansion Joint Plates 2640 lbs  
 Expansion Joint Pins 280 lbs  
 Expansion Joint Nuts 195 lbs

**DETAILS OF PIN** (Reinforced Steel) (As required for each span)

**DETAILS OF NUT** (Reinforced Steel) (As required for each span)

**COMMONWEALTH OF KENTUCKY**  
 STATE HIGHWAY DEPARTMENT  
 FRANKFORT  
 COUNTY OF  
**ELLIOTT**  
 MOREHEAD - SANDY HOOK  
 ROAD  
 PROJECT NO. 6727-1846  
 DRAWN BY: [Signature]  
 CHECKED BY: [Signature]  
 DATE: 11/1/91

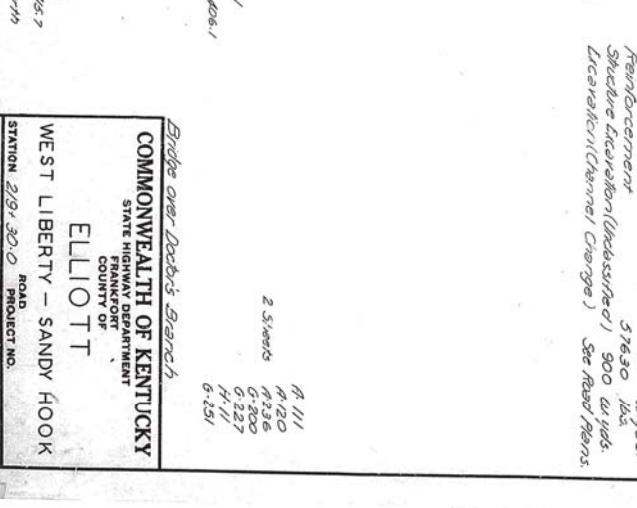
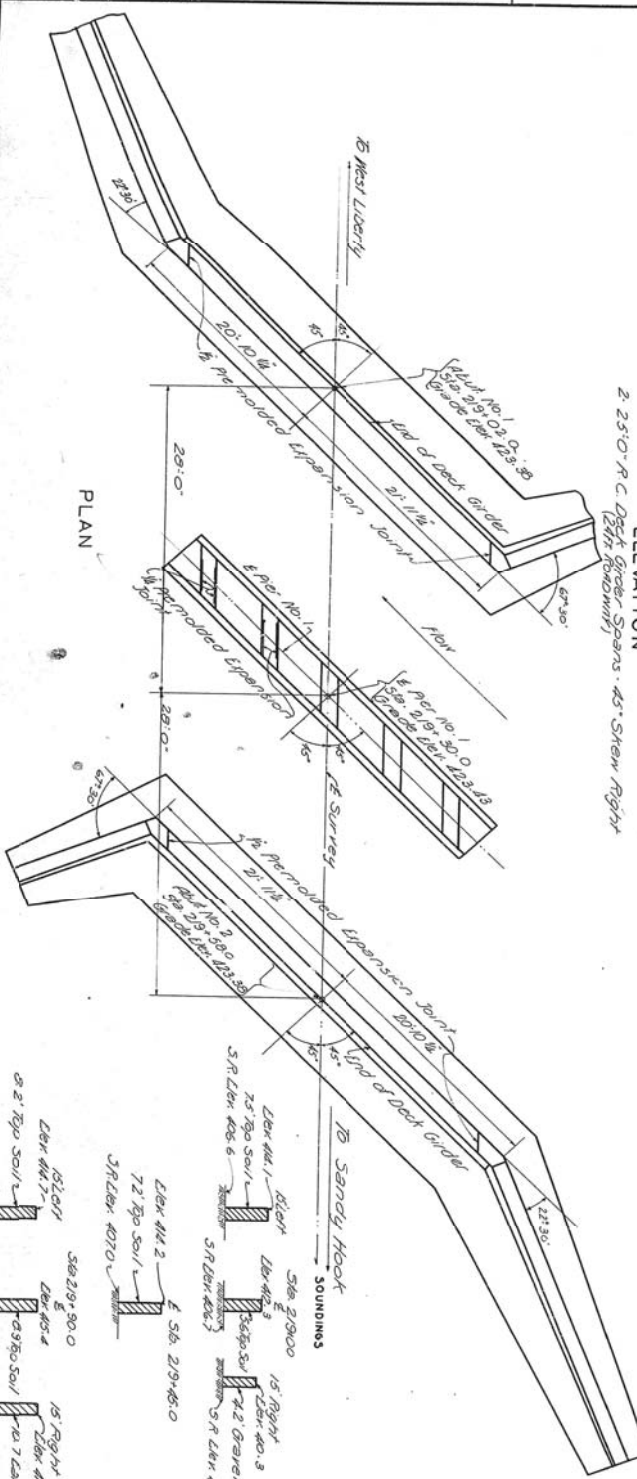
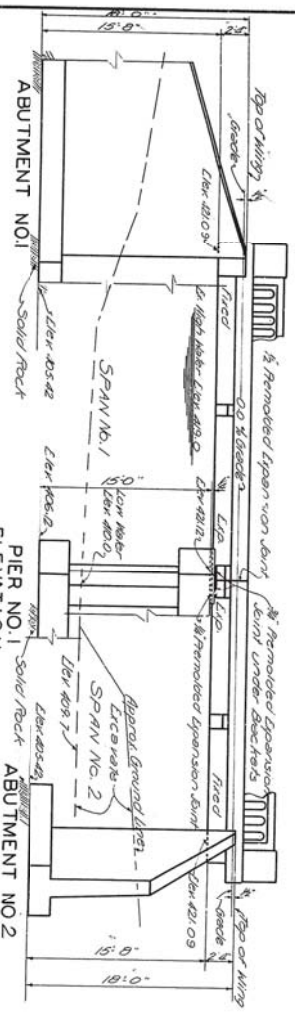
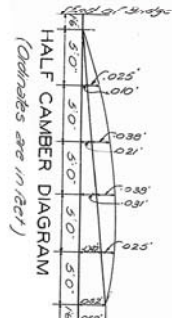
032B00006N



DESIGNED BY *V. J. McManis* DATE *11/25/98* REVIEWED  
CHECKED BY *L. J. Vaughn* DATE *2/1/99* REVIEWED  
DATE  
SCALE

**REFERENCES**

For details of R.C. Abutments Nos. 1 & 2, 45° Skew Right, see Standard Drawing No. F-2-36 (2 SHEETS)  
For details of B.C. R.C. Pier No. 1, 45° Skew Right, see Standard Drawing No. F-111, F-120  
For details of 25'-0" R.C. Deck Girder Span, 45° Skew Right, see Standard Drawing No. G-227  
For details of C.I. Drains see Standard Drawing No. H-11  
For details of copper strips and remodeled expansion joint material see Standard Drawing No. G-200



# 032B00007N

**GENERAL NOTE**

**SPECIFICATIONS:** State Highway Department, Kentucky, (1932 Standard with subsequent additions) generally Class F concrete to be used throughout except in Item 11 and 12.

**Class D Concrete:** to be used in shoulders and base of concrete in the clear distance. Dimensions shown on face of concrete shall be secured by means of correct position wire of all intersections. Precast member or concrete deck supporting reinforcement shall be spaced not further apart than 30 diameters of the specified bar. Reinforcement details shown herein was obtained by the best information available to the State Highway Commission. This does not constitute an admission of liability and holders must obtain their own conditions as to conditions to be encountered. The State Highway Commission does not give any guarantee as to accuracy of data furnished when the work is being executed. Four cast iron drains required each to be included in price bid for Class F concrete.

**BONDING DATA**

**STEEL REINFORCEMENT:** to be determined by dimension shown on face of concrete is the clear distance. Dimensions shown on face of concrete shall be secured by means of correct position wire of all intersections. Precast member or concrete deck supporting reinforcement shall be spaced not further apart than 30 diameters of the specified bar. Reinforcement details shown herein was obtained by the best information available to the State Highway Commission. This does not constitute an admission of liability and holders must obtain their own conditions as to conditions to be encountered. The State Highway Commission does not give any guarantee as to accuracy of data furnished when the work is being executed. Four cast iron drains required each to be included in price bid for Class F concrete.

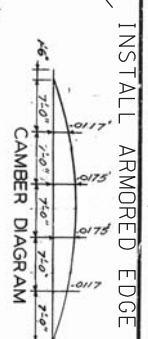
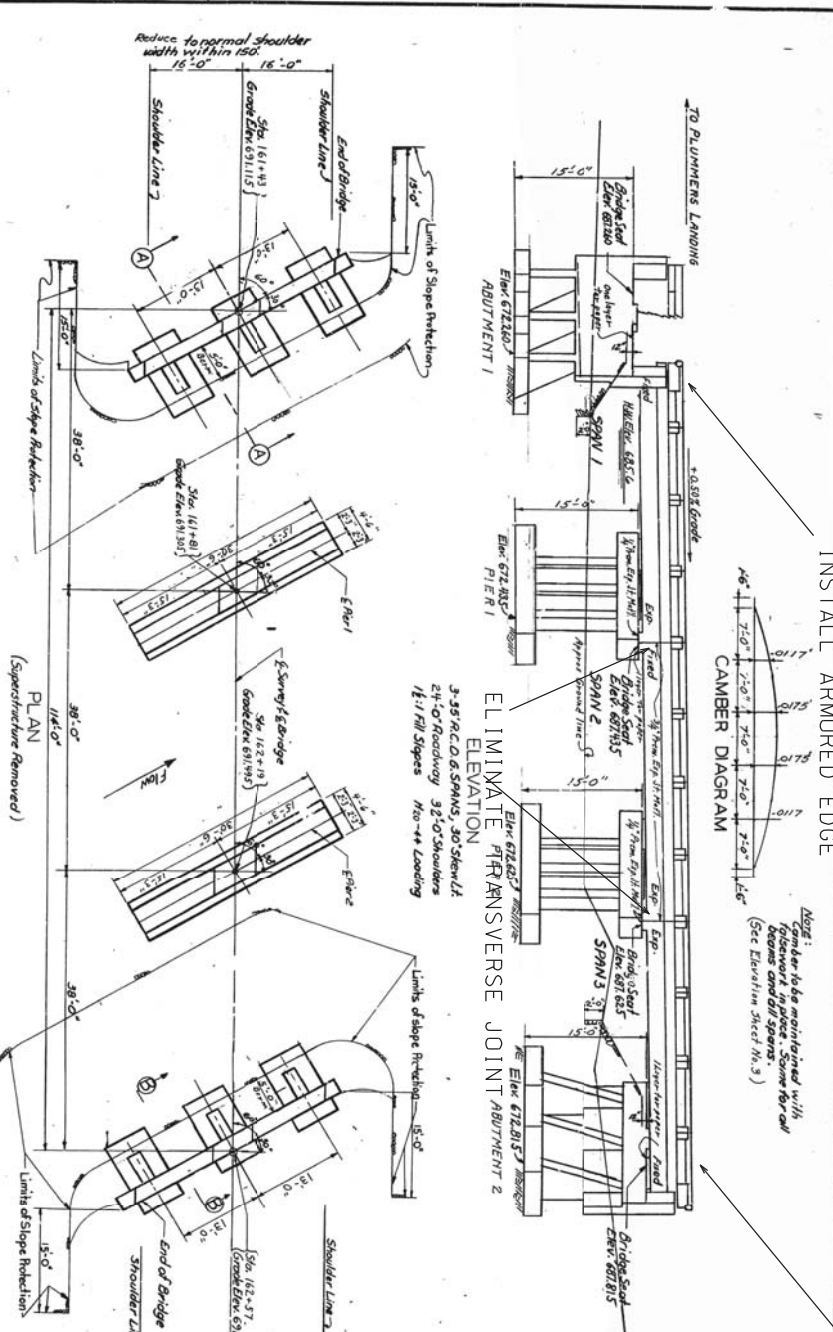
**TOTAL ESTIMATE OF QUANTITIES:**

Concrete Class F	363.3 cu yds.
Concrete Class D	70 cu yds.
Reinforcement	576.30 lbs.
Structure Excavation (Unexcavated) 900 cu yds.	
Excavation (Channel Change)	See Road Plans

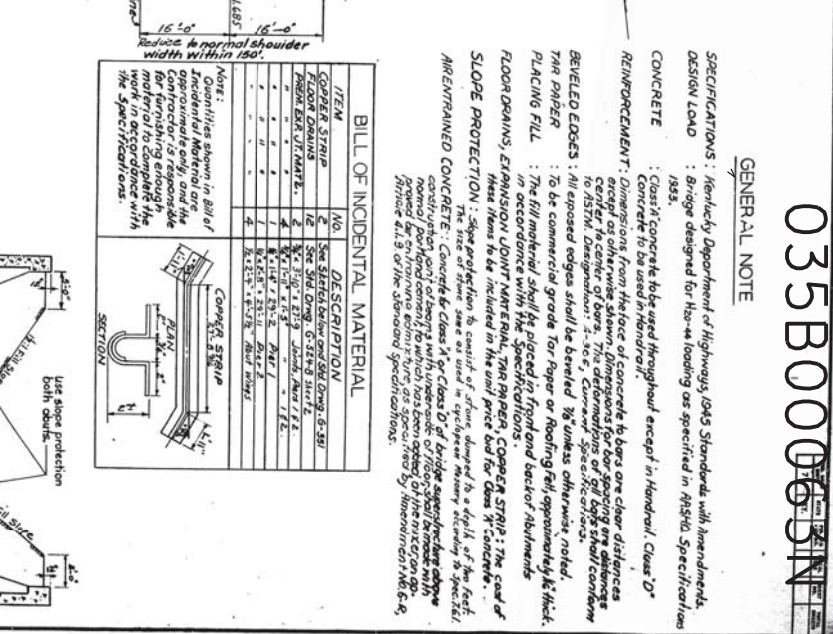
Bridge over Doob's Branch  
COMMONWEALTH OF KENTUCKY  
STATE HIGHWAY DEPARTMENT  
COUNTY OF ELLIOTT  
WEST LIBERTY - SANDY HOOK  
STATION 2+97.30-0 ROAD PROJECT NO. 1-6302

DATE: JUL 25 1998

DESIGNED BY E.A.S.	CHECKED BY E.A.S.	DATE 6/27/90	REVIEWED	DATE
DRAWN BY	CHECKED BY	DATE	REVIEWED	DATE
TRACED BY	CHECKED BY	DATE	REVIEWED	DATE



**GENERAL NOTE (CONTINUED): REMOVE EXISTING STRUCTURE**  
This contract includes removal of the existing structure (to 65' x 16' steel Army Truss Bridge) in accordance with the plans and specifications. The existing bridge is to be demolished in a safe manner by a contractor licensed in the State of Kentucky. The contractor shall be responsible for the removal of the existing structure. The contractor shall be responsible for the removal of the existing structure. The contractor shall be responsible for the removal of the existing structure.



**GENERAL NOTE**  
Specifications: Kentucky Department of Highways, 1984 Standards with amendments.  
DESIGN LOAD : Bridge designed for Hs-44 loading as specified in AASHTO Specification 1993.  
CONCRETE : Class II concrete to be used throughout except in handrails. Class D\* concrete to be used in handrails.  
REINFORCEMENT : Concreting from the face of concrete to bars are clear distances center to center of bars. Dimensions for bar spacing are as shown on drawings. Reinforcement shall be furnished in accordance with the specifications for AASHTO Designation: 1-305, Current Specification for Reinforcing Steel Bars.  
BEVELED EDGES : All exposed edges shall be beveled 3/8" unless otherwise noted.  
TAR PAPER : To be commercial grade Tar Paper or Rubber Fall approximately 1/8" thick.  
FLOOR DRAINS, ELIMINATION JOINT MATERIAL, TAR PAPER, COPPER STRIPS : The cost of these items to be included in the unit price but for Class II concrete.  
SLOPE PROTECTION : Slope protection to consist of stone placed in a depth of the face of the structure. The size of stone same as used in specified stone retaining structure. Construction part of facing with underside of floor shall be same as specified for stone retaining structure. The stone shall be placed in accordance with the specifications for stone retaining structure.  
ANCHORED CONCRETE : Concrete for Class II or Class D of bridge superstructure shall be anchored to the existing structure. The anchorage shall be in accordance with the specifications for anchored concrete.

**BILL OF INCIDENTAL MATERIAL**

ITEM	NO.	DESCRIPTION
CONCRETE	1	See Specifications for Class II or Class D
REINFORCEMENT	2	See Specifications for AASHTO Designation: 1-305
TAR PAPER	3	See Specifications for Commercial Grade
FLOOR DRAINS	4	See Specifications for Commercial Grade
ELIMINATION JOINT MATERIAL	5	See Specifications for Commercial Grade
COPPER STRIPS	6	See Specifications for Commercial Grade

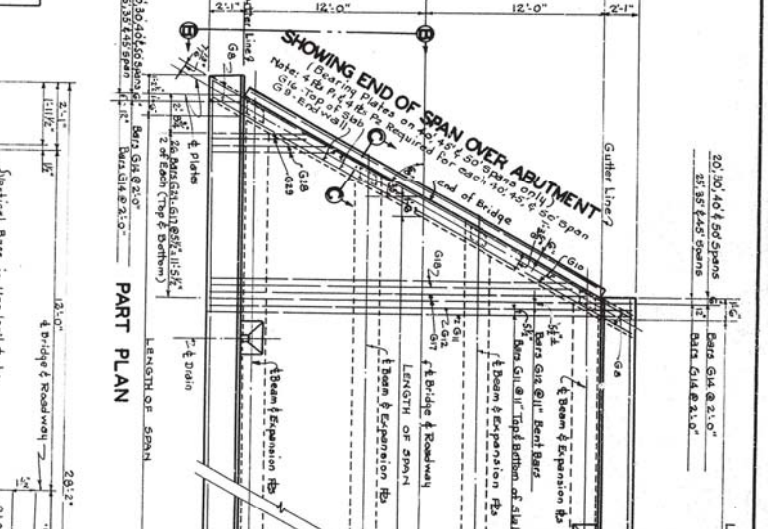
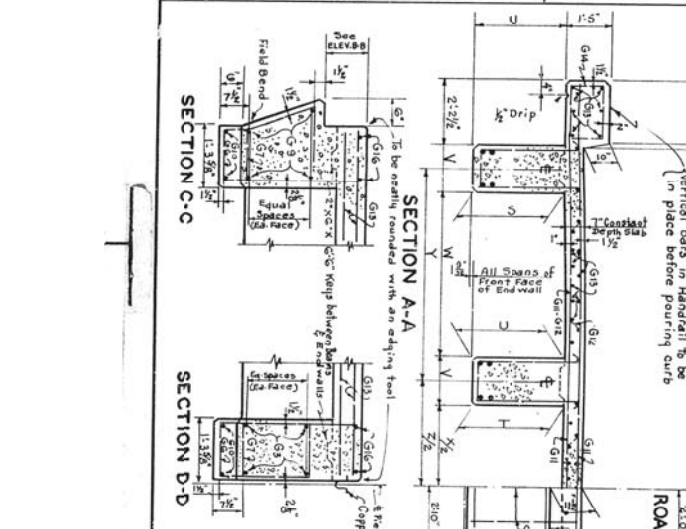
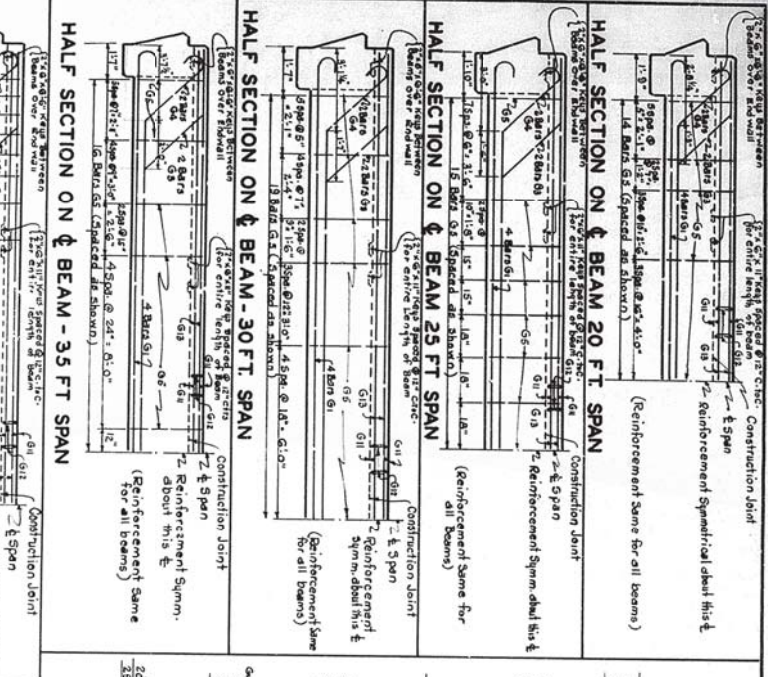
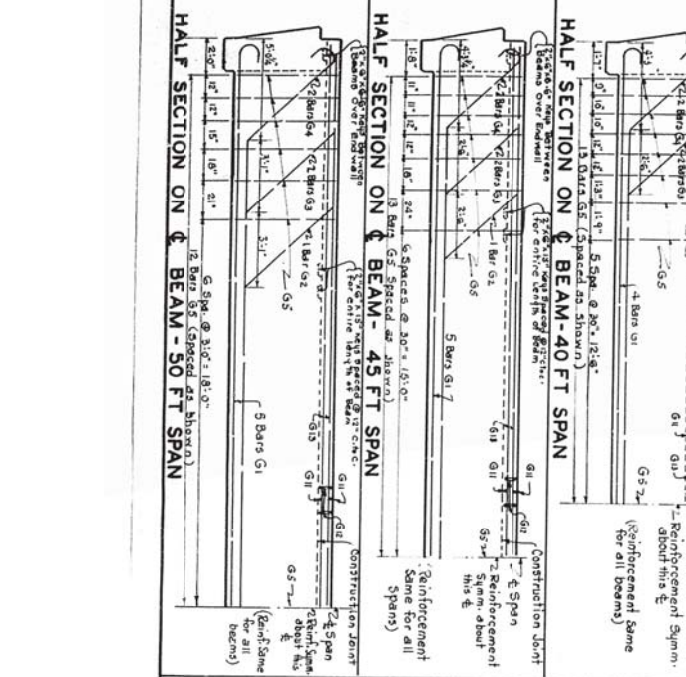
**TOTAL ESTIMATE OF QUANTITIES**

ITEM	SHEET NO.	CLASSIFICATION	QUANTITY	UNIT	AMOUNT
CONCRETE	1	Class II	10,000	cu yd	250,000
REINFORCEMENT	2	Class D	100,000	lb	20,000
TAR PAPER	3	Commercial Grade	100,000	sq yd	10,000
FLOOR DRAINS	4	Commercial Grade	100,000	sq yd	10,000
ELIMINATION JOINT MATERIAL	5	Commercial Grade	100,000	sq yd	10,000
COPPER STRIPS	6	Commercial Grade	100,000	sq yd	10,000
<b>TOTALS</b>					<b>300,000</b>

**SECTION A-A**  
**SECTION B-B**

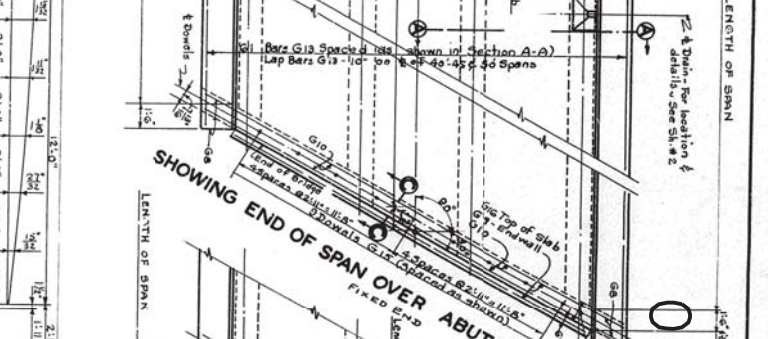
Bridge over Fox Creek  
Plummers Landing - Park Lake  
COUNTY OF FLEMING  
DEPARTMENT OF HIGHWAYS  
COMMONWEALTH OF KENTUCKY  
PROJECT NO. S-523 (1)  
ESTATION 162+00  
BRIDGE NUMBER 12420  
NOV 31 1993

DESIGNED BY J.M.	CHECKED BY E.R.S.	DATE 11/24/11	PROJECT Hawks Island Rd 66	DATE 11/24/11
---------------------	----------------------	------------------	-------------------------------	------------------



**TABLE OF DIMENSIONS**

Span	1	2	3	4	5	6	7	8	9	10	11	12	13	14	15	16	17	18	19	20
Span	10	15	20	25	30	35	40	45	50	55	60	65	70	75	80	85	90	95	100	
Beam Width	18	20	22	24	26	28	30	32	34	36	38	40	42	44	46	48	50	52	54	
Beam Height	24	26	28	30	32	34	36	38	40	42	44	46	48	50	52	54	56	58	60	
Reinforcement	G1-G7	G1-G7	G1-G7	G1-G7	G1-G7	G1-G7	G1-G7	G1-G7	G1-G7	G1-G7	G1-G7	G1-G7	G1-G7	G1-G7	G1-G7	G1-G7	G1-G7	G1-G7	G1-G7	

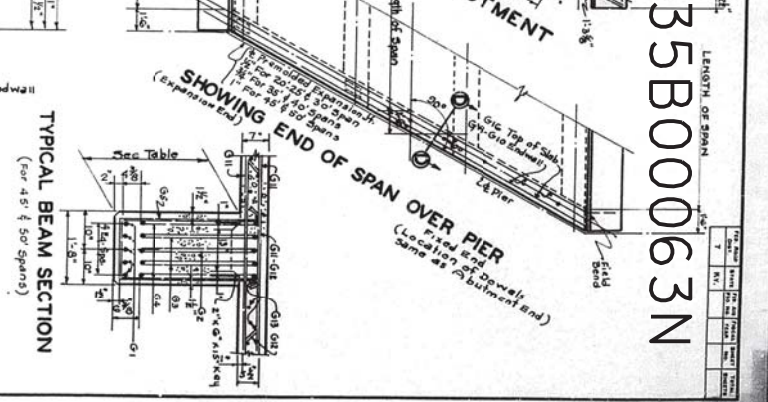


**COMMONWEALTH OF KENTUCKY**  
DEPARTMENT OF HIGHWAYS

**STANDARD CONCRETE BRIDGE DECK GIRDERS**

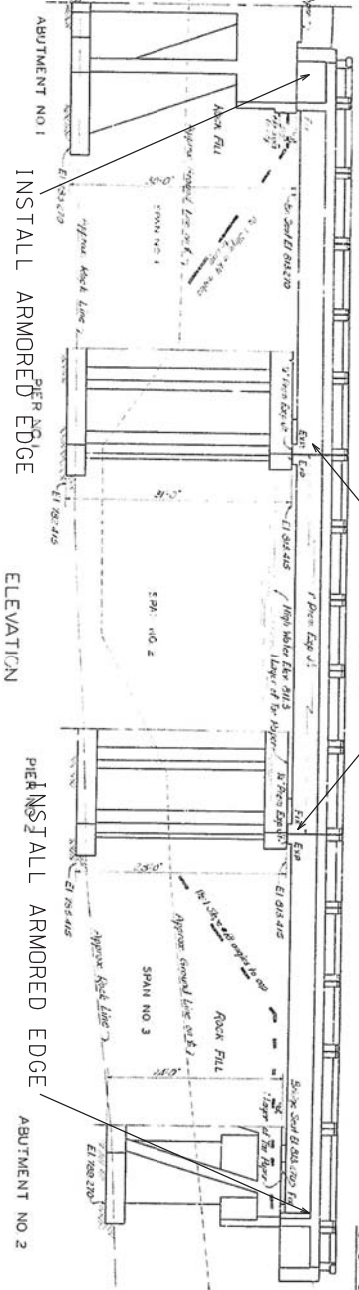
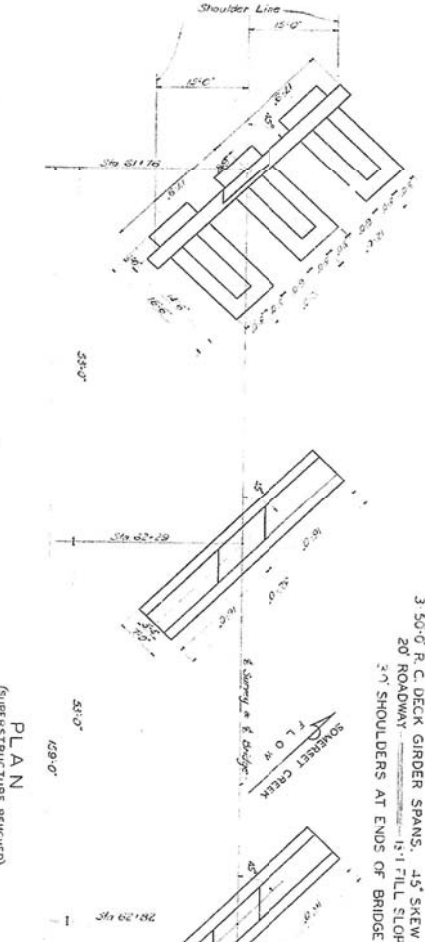
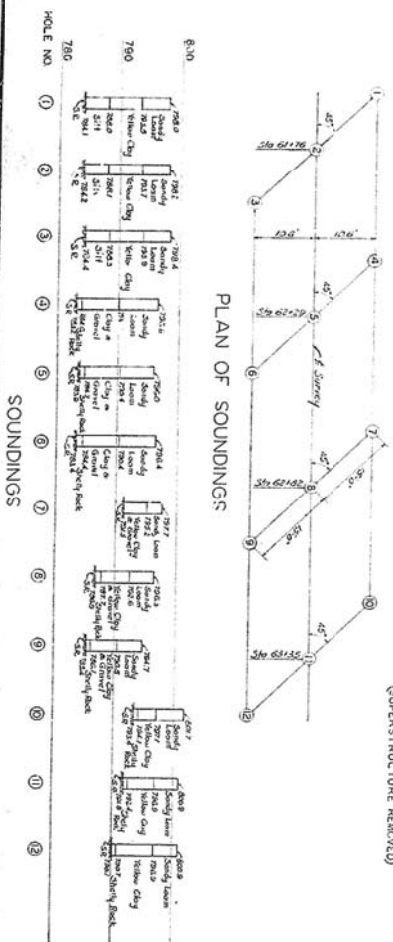
30° SKEW 24 FT. ROADWAY SPANS 20 TO 50'

Sheet 1 of 2  
G.548



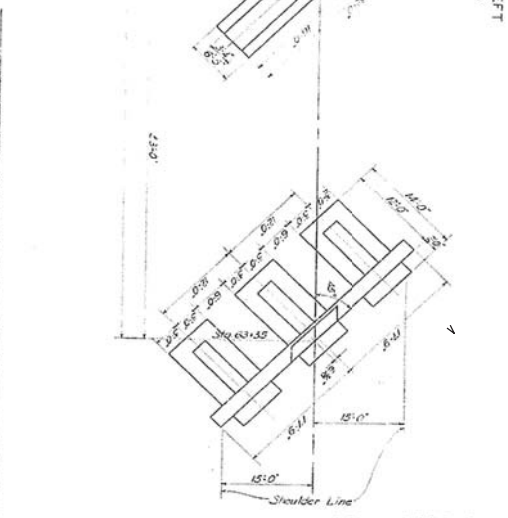
035B00063N

DESIGNED BY	CHECKED BY	DATE	REVIEWED	DATE
DRAWN BY	CHECKED BY	DATE	REVIEWED	DATE
TRACED BY	CHECKED BY	DATE	REVIEWED	DATE



**REFERENCES AND ESTIMATE OF QUANTITIES**

Item	Unit	Quantity	Unit Price	Total
Legend Sheet		1	91.3	91.3
Abutment No. 1	cu yd	10857	275	2983675
Pier No. 1	cu yd	811	160	130000
Pier No. 2	cu yd	717	160	114720
Abutment No. 2	cu yd	687	160	110000
Span No. 1	cu yd	647	31	20067
Span No. 2	cu yd	74.6	2.6	194
Span No. 3	cu yd	94.7	3.1	2936
Retentions	sq ft			304
Excavations	cu yd			304
Concrete	cu yd			304
Steel	lb			304
Rock Fill	cu yd			304
Gravel	cu yd			304
Other Materials				304
<b>TOTAL</b>				<b>3582</b>



**GENERAL NOTE**

REGULATIONS: Kentucky Department of Highways/State Standard with  
DESIGN LOAD: Bridge designed for HS 20-44 or specified in AASHTO  
CONCRETE: Class "X" concrete to be used throughout except in  
RETAINMENT: Retention walls shall be constructed with concrete  
REINFORCEMENT: Reinforcement shall be placed in accordance with the  
REVELED EDGES: All exposed edges to be finished with a minimum  
of 2" of concrete or other material to be specified by the engineer.

**BILL OF INCIDENTAL MATERIAL**

ITEM	NO.	SIZE AND DESCRIPTION	LOCATION
Form	1	1" x 4" x 8" Ply	Between Spans
Form	2	1" x 4" x 8" Ply	Between Curb
Form	3	1" x 4" x 8" Ply	Spill of Pier No. 1
Form	4	1" x 4" x 8" Ply	Spill of Pier No. 2
Form	5	1" x 4" x 8" Ply	Spill of Pier No. 3
Form	6	1" x 4" x 8" Ply	Between Spans

**COMMONWEALTH OF KENTUCKY**  
DEPARTMENT OF HIGHWAYS  
NICHOLAS COUNTY  
PLUM - EAST UNION  
PROJECT NO. 5375(0)  
ROAD 1114

091B00045N  
EAST UNION

DESIGNED BY: R.P. HALL	DATE: 12/15/11	REVISION:	DATE:
CHECKED BY: G. J. COOPER	DATE: 12/15/11	REVISION:	DATE:
APPROVED BY: G. J. COOPER	DATE: 12/15/11	REVISION:	DATE:

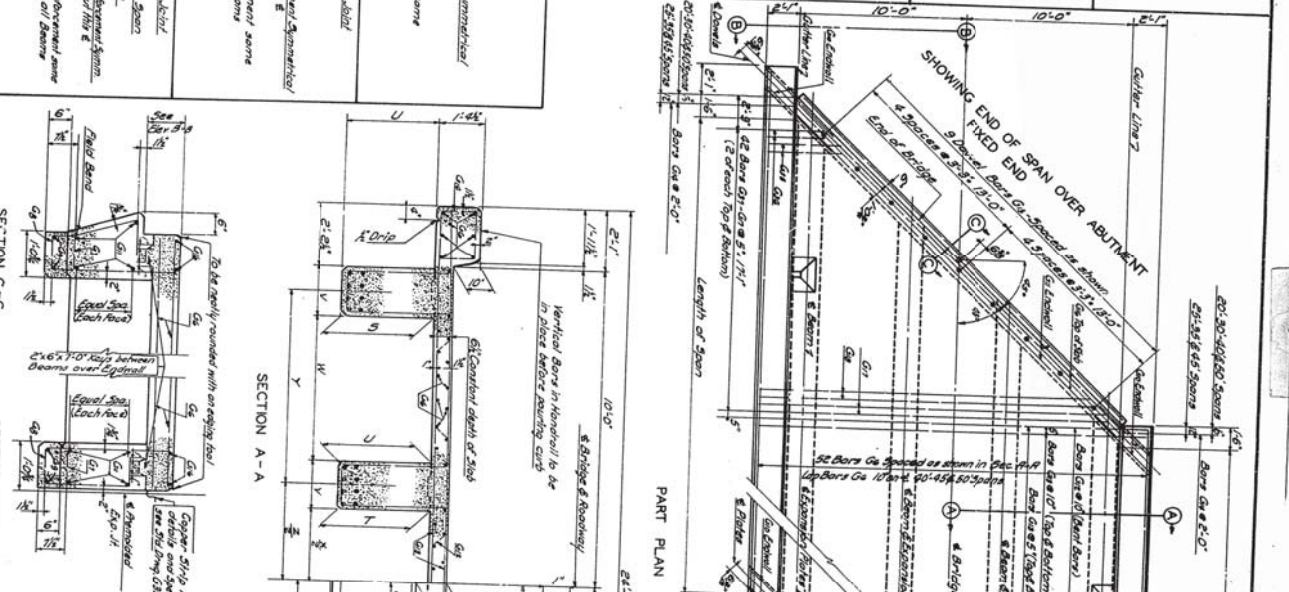
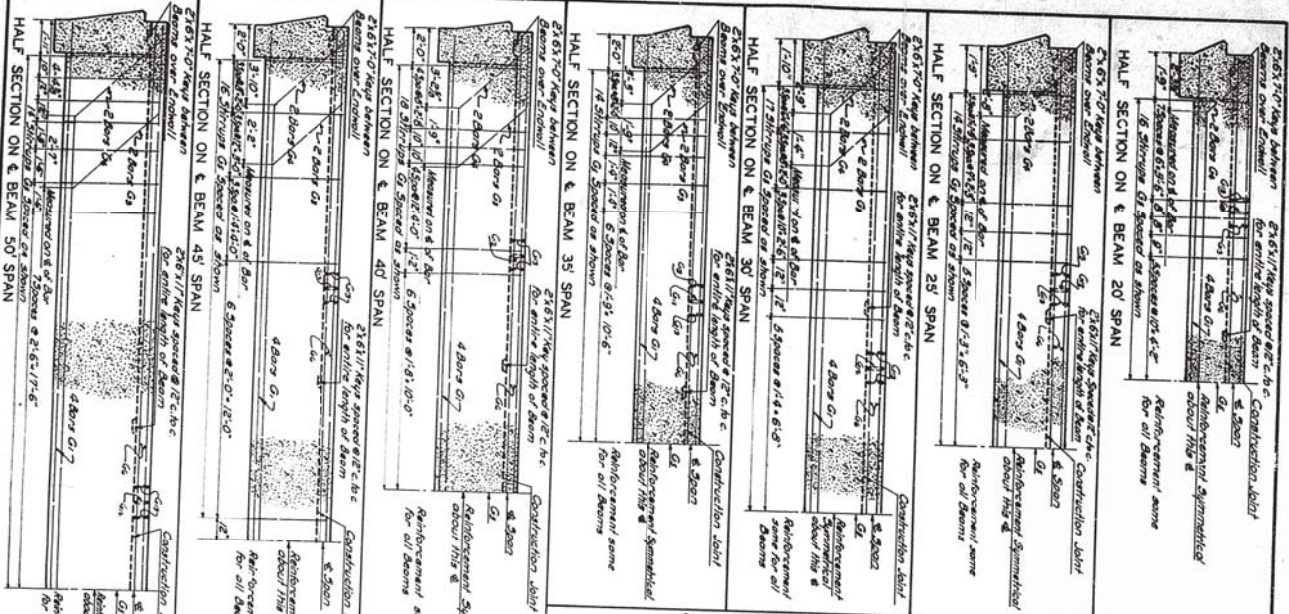
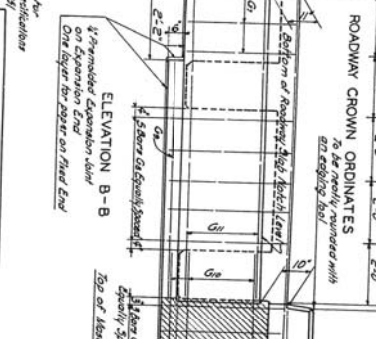


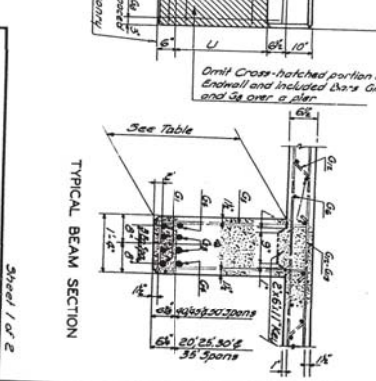
TABLE OF DIMENSIONS

SPAN	FIN	20 FT	25 FT	30 FT	35 FT	40 FT	45 FT	50 FT
1	1	1	1	1	1	1	1	1
2	2	2	2	2	2	2	2	2
3	3	3	3	3	3	3	3	3
4	4	4	4	4	4	4	4	4
5	5	5	5	5	5	5	5	5
6	6	6	6	6	6	6	6	6
7	7	7	7	7	7	7	7	7
8	8	8	8	8	8	8	8	8
9	9	9	9	9	9	9	9	9
10	10	10	10	10	10	10	10	10
11	11	11	11	11	11	11	11	11
12	12	12	12	12	12	12	12	12
13	13	13	13	13	13	13	13	13
14	14	14	14	14	14	14	14	14
15	15	15	15	15	15	15	15	15
16	16	16	16	16	16	16	16	16
17	17	17	17	17	17	17	17	17
18	18	18	18	18	18	18	18	18
19	19	19	19	19	19	19	19	19
20	20	20	20	20	20	20	20	20



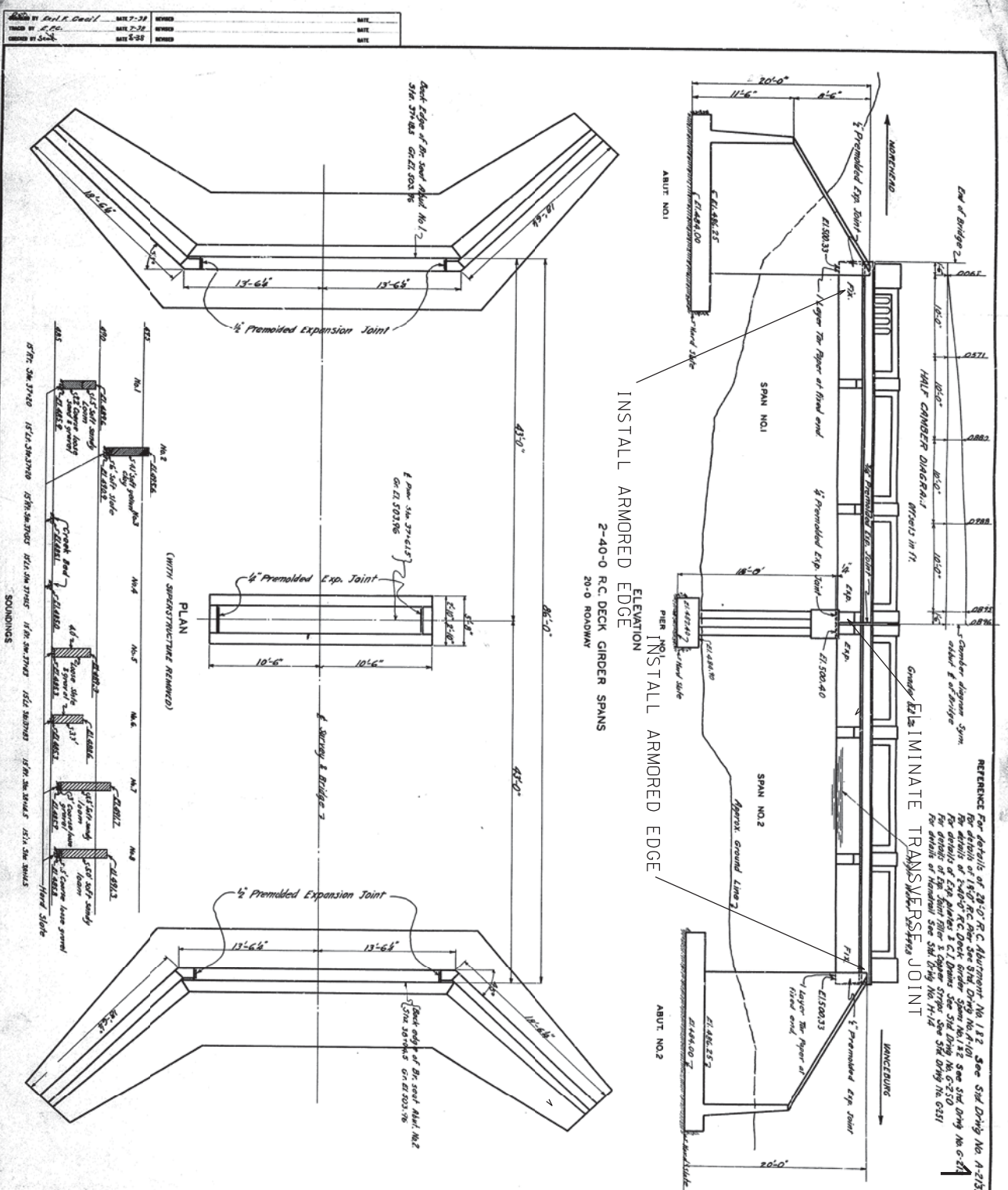
COMMONWEALTH OF KENTUCKY  
DEPARTMENT OF HIGHWAYS  
STANDARD CONCRETE BRIDGE  
DECK GIRDERS  
45° SKEW  
20 FT. ROADWAY  
SPANS 20' TO 50'

Steel 1" x 2"



091B00045N





REFERENCE: For details of 24-0" R.C. Abutment No. 1 & 2 See Std. Draw. No. A-215  
For details of 40-0" R.C. Pier See Std. Draw. No. A-101  
For details of 2-40-0" R.C. Deck Girders See Std. Draw. No. G-212  
For details of 2-40-0" R.C. Deck Slabs See Std. Draw. No. G-210  
For details of 20-0" Roadway Slab See Std. Draw. No. G-211  
For details of 14-0" Concrete Slab See Std. Draw. No. G-213

ELIMINATE TRANSVERSE JOINT

INSTALL ARMORED EDGE  
2-40-0 R.C. DECK SPANS  
20-0 ROADWAY

GENERAL NOTE

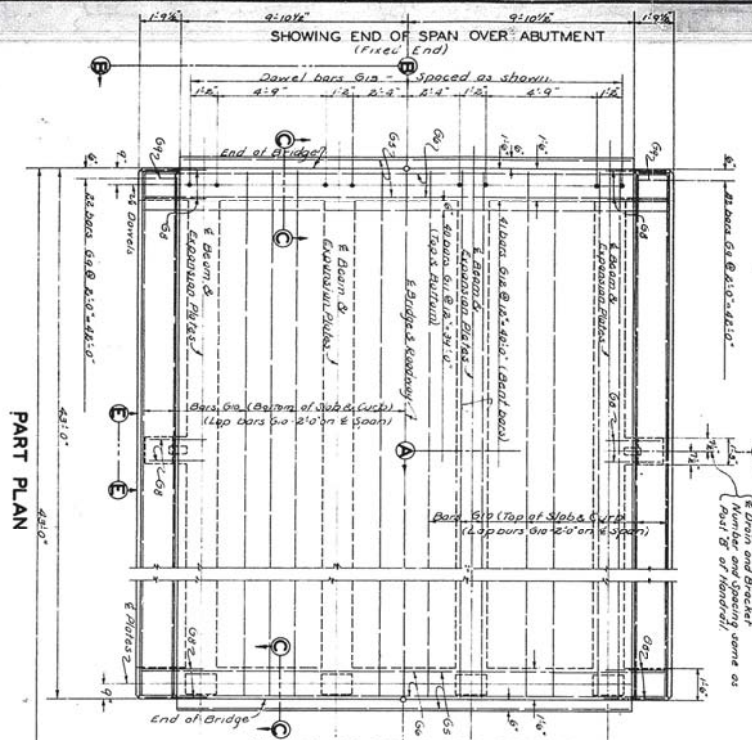
Specifications: State Highway Department, Kentucky (1922 Standard with Amendments)  
Design (A-215) Bridge designed for H-15 loading as specified in AASHTO Specifications 1915.  
Concrete: Class "B" concrete to be used throughout except in hand-laid concrete. Class "C" concrete to be used in hand-laid concrete.  
Reinforcement: Reinforcing steel to be furnished by the contractor. Reinforcing steel to be furnished by the contractor. Reinforcing steel to be furnished by the contractor.  
Expansion Joints: Expansion joints to be furnished by the contractor. Expansion joints to be furnished by the contractor. Expansion joints to be furnished by the contractor.  
The cost of these items to be included in the unit price bid for class "B" concrete.  
Expansion Plates: All plates to be class "B" concrete. Expansion plates to be class "B" concrete. Expansion plates to be class "B" concrete.  
Machine bolts to be furnished, but one not included in weight of plates given. Cost of bolts one to be included in unit price bid for plates. Plates are to be true to dimensions and sliding surfaces to be even and flat to give full bearing with no interference to sliding.  
Remove extra: The contractor shall remove and dispose of all extra material and work not shown on the drawings. The contractor shall remove and dispose of all extra material and work not shown on the drawings. The contractor shall remove and dispose of all extra material and work not shown on the drawings.  
The contractor shall remove and dispose of all extra material and work not shown on the drawings. The contractor shall remove and dispose of all extra material and work not shown on the drawings. The contractor shall remove and dispose of all extra material and work not shown on the drawings.

TOTAL ESTIMATE OF QUANTITIES

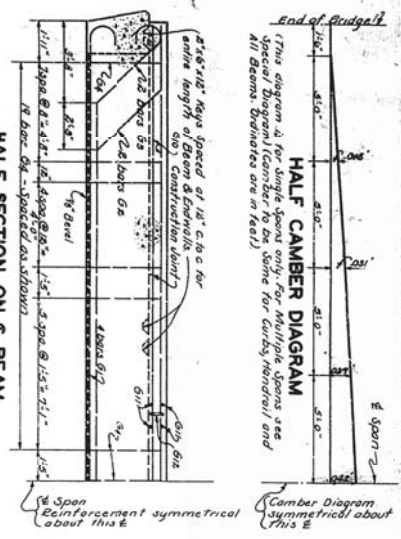
Concrete Class "B"	325 Cu. Yds.
Concrete Class "C"	160 Cu. Yds.
Reinforcement	39,900 Lbs.
Expansion Plates	510 Sq. Yds.
Structure Erection	510 Sq. Yds.

COMMONWEALTH OF KENTUCKY  
DEPARTMENT OF HIGHWAYS  
FRANKFORT  
COUNTY OF ROWAN  
MOREHEAD - VANCEBURG  
ROAD PROJECT NO. 103B00025N  
STATION 37+83.5  
7/80

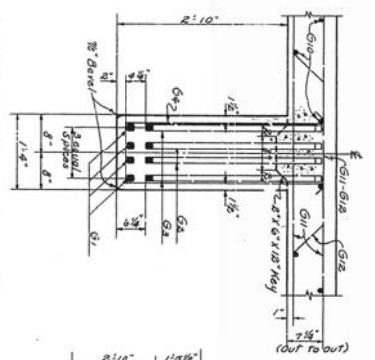
Final Check: *M. H. ...* 7-12-28  
 DESIGNED BY: *E. Vaughan* DATE: 8-2-28  
 CHECKED BY: *E. Vaughan* DATE: 8-2-28  
 REVISIONS: *Conc. Diagram* DATE: 8-2-28  
 REVISIONS: *...* DATE: 7-28



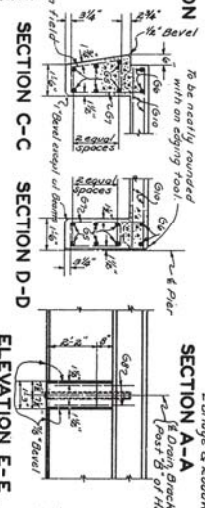
HALF SECTION ON G BEAM  
(Reinforcement same for all beams)



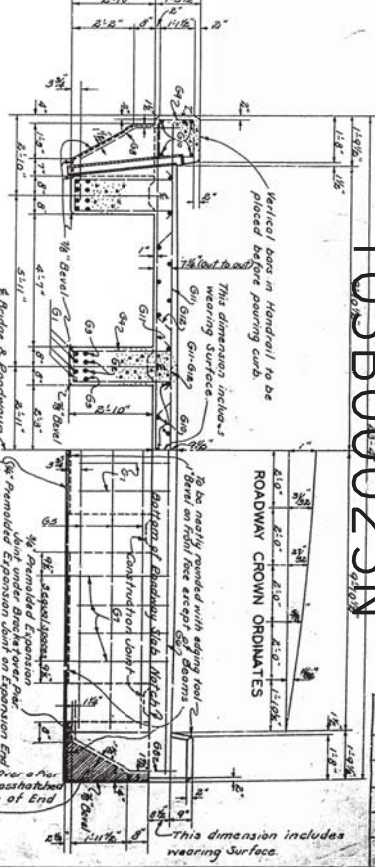
TYPICAL BEAM SECTION



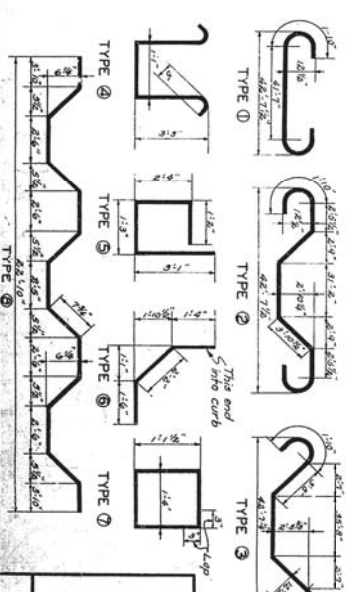
SECTION C-C SECTION D-D ELEVATION E-E



SECTION A-A SECTION B-B



103B00023N



NO.	TYPE	NO. USED	LOCATION
G1	1/2"	45	Beams
G2	1/2"	47	"
G3	1/2"	46	"
G4	1/2"	7	"
G5	1/2"	7	"
G6	1/2"	7	"
G7	1/2"	7	"
G8	1/2"	7	"
G9	1/2"	7	"
G10	1/2"	7	"
G11	1/2"	7	"
G12	1/2"	7	"

NO.	TYPE	NO. USED	LOCATION
G13	1/2"	7	"
G14	1/2"	7	"
G15	1/2"	7	"
G16	1/2"	7	"
G17	1/2"	7	"
G18	1/2"	7	"
G19	1/2"	7	"
G20	1/2"	7	"
G21	1/2"	7	"
G22	1/2"	7	"
G23	1/2"	7	"
G24	1/2"	7	"
G25	1/2"	7	"
G26	1/2"	7	"
G27	1/2"	7	"
G28	1/2"	7	"
G29	1/2"	7	"
G30	1/2"	7	"
G31	1/2"	7	"
G32	1/2"	7	"
G33	1/2"	7	"
G34	1/2"	7	"
G35	1/2"	7	"
G36	1/2"	7	"
G37	1/2"	7	"
G38	1/2"	7	"
G39	1/2"	7	"
G40	1/2"	7	"
G41	1/2"	7	"
G42	1/2"	7	"
G43	1/2"	7	"
G44	1/2"	7	"
G45	1/2"	7	"
G46	1/2"	7	"
G47	1/2"	7	"
G48	1/2"	7	"
G49	1/2"	7	"
G50	1/2"	7	"
G51	1/2"	7	"
G52	1/2"	7	"
G53	1/2"	7	"
G54	1/2"	7	"
G55	1/2"	7	"
G56	1/2"	7	"
G57	1/2"	7	"
G58	1/2"	7	"
G59	1/2"	7	"
G60	1/2"	7	"
G61	1/2"	7	"
G62	1/2"	7	"
G63	1/2"	7	"
G64	1/2"	7	"
G65	1/2"	7	"
G66	1/2"	7	"
G67	1/2"	7	"
G68	1/2"	7	"
G69	1/2"	7	"
G70	1/2"	7	"
G71	1/2"	7	"
G72	1/2"	7	"
G73	1/2"	7	"
G74	1/2"	7	"
G75	1/2"	7	"
G76	1/2"	7	"
G77	1/2"	7	"
G78	1/2"	7	"
G79	1/2"	7	"
G80	1/2"	7	"
G81	1/2"	7	"
G82	1/2"	7	"
G83	1/2"	7	"
G84	1/2"	7	"
G85	1/2"	7	"
G86	1/2"	7	"
G87	1/2"	7	"
G88	1/2"	7	"
G89	1/2"	7	"
G90	1/2"	7	"
G91	1/2"	7	"
G92	1/2"	7	"
G93	1/2"	7	"
G94	1/2"	7	"
G95	1/2"	7	"
G96	1/2"	7	"
G97	1/2"	7	"
G98	1/2"	7	"
G99	1/2"	7	"
G100	1/2"	7	"

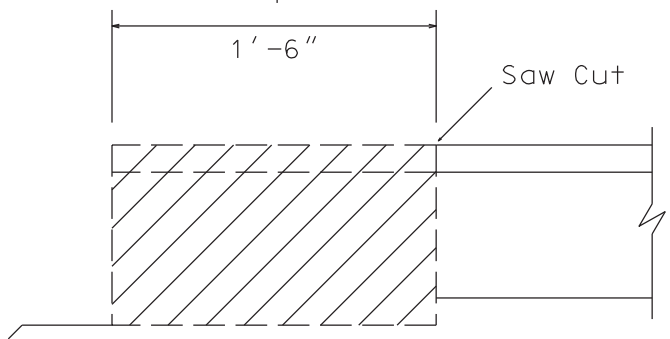
GENERAL NOTE  
 State Highway Department, Kentucky, 1928 Standard with subsequent adopted amendments.  
 Cast in concrete to be used through.  
 Steel reinforcement - To be determined by bar spacing from the face of concrete as shown on drawings. Dimensions shown for bar spacing are the distance between centers of bars. Reinforcement shall be placed in position by means of precast masonry or concrete blocks supporting reinforcement. Bars shall be spaced not further apart than 50 diameters.  
 Maximum spacing - To be the same as for concrete.  
 Bent-up bars - All bent-up bars shall be bent with the requirements for same.  
 Reinforced concrete - Cast of formwork and placed in accordance with the requirements for same.  
 Cast iron beams - See Standard Drawing G-250.  
 The plates - To be the same as for concrete.  
 Expansion plates - For details of Expansion plates see Standard Drawing G-250.

COMMONWEALTH OF KENTUCKY  
 STATE HIGHWAY DEPARTMENT  
 STANDARD CONCRETE BRIDGE  
 DECK GIRDER STRAIGHT  
 40 FT. SPAN 20 FT. ROW

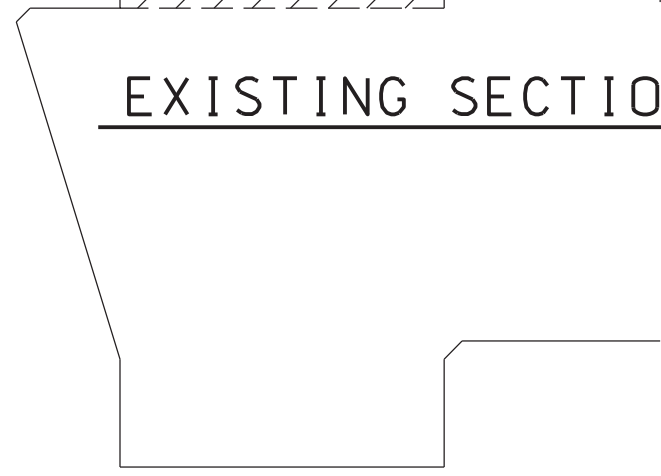
022B00063N  
032B00006N  
032B00007N  
035B00063N  
091B00045N  
103B00023N

# ARMORED EDGE DETAIL

Remove X-Hatched Areas of  
Concrete & Expansion Device

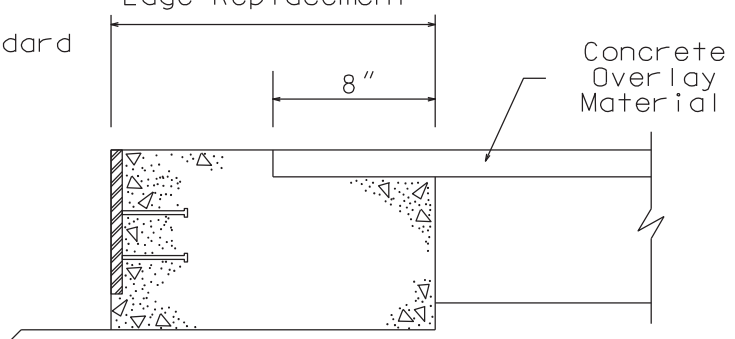


## EXISTING SECTION

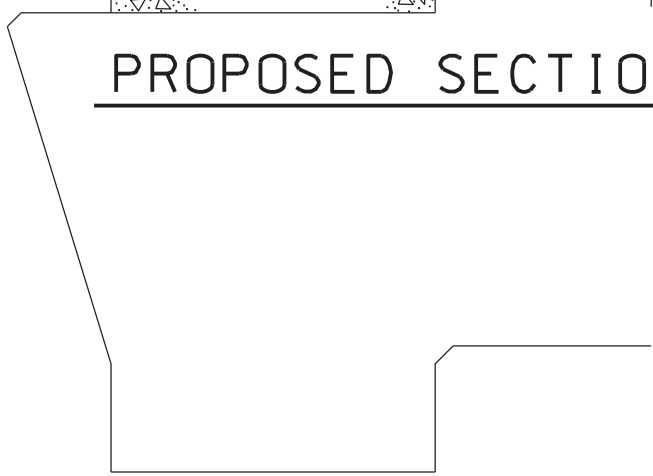


Pay Limits for "Armored  
Edge Replacement"

See Standard  
Drawing  
BJE-001



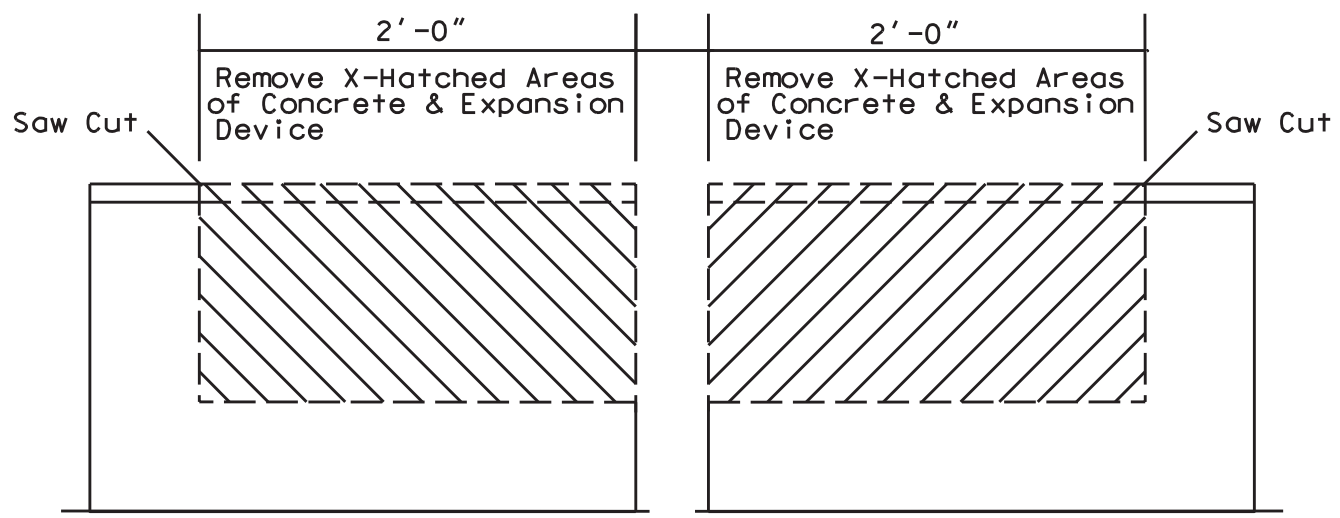
## PROPOSED SECTION



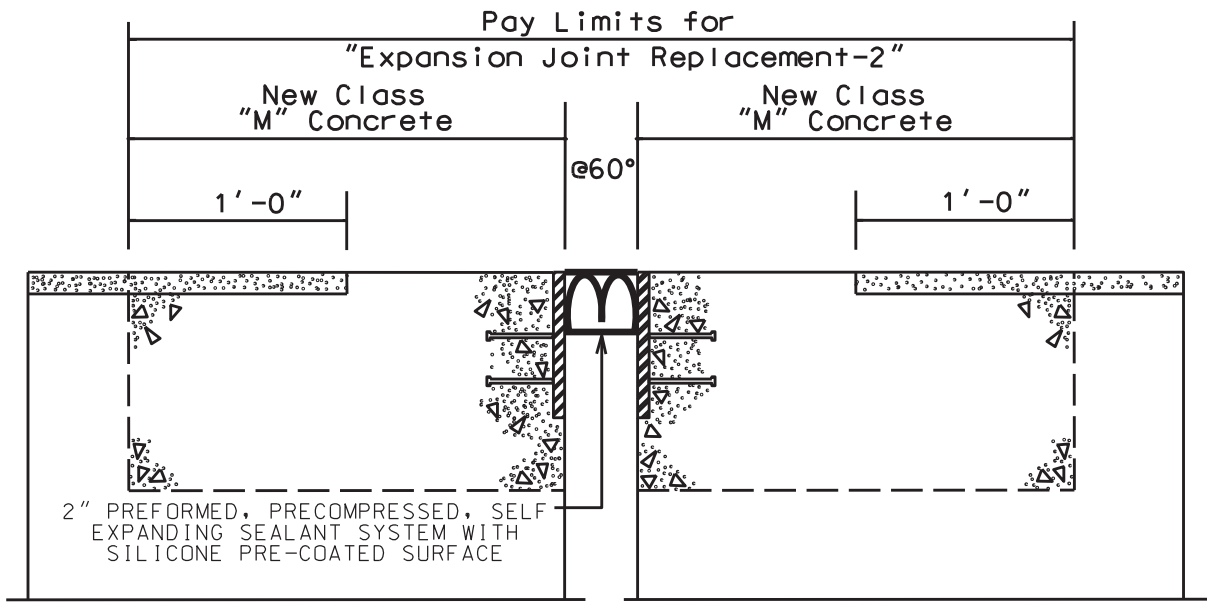
022B00063N

# EXPANSION DAM DETAIL

Expansion Joint Replacement-2"-30 degree skew



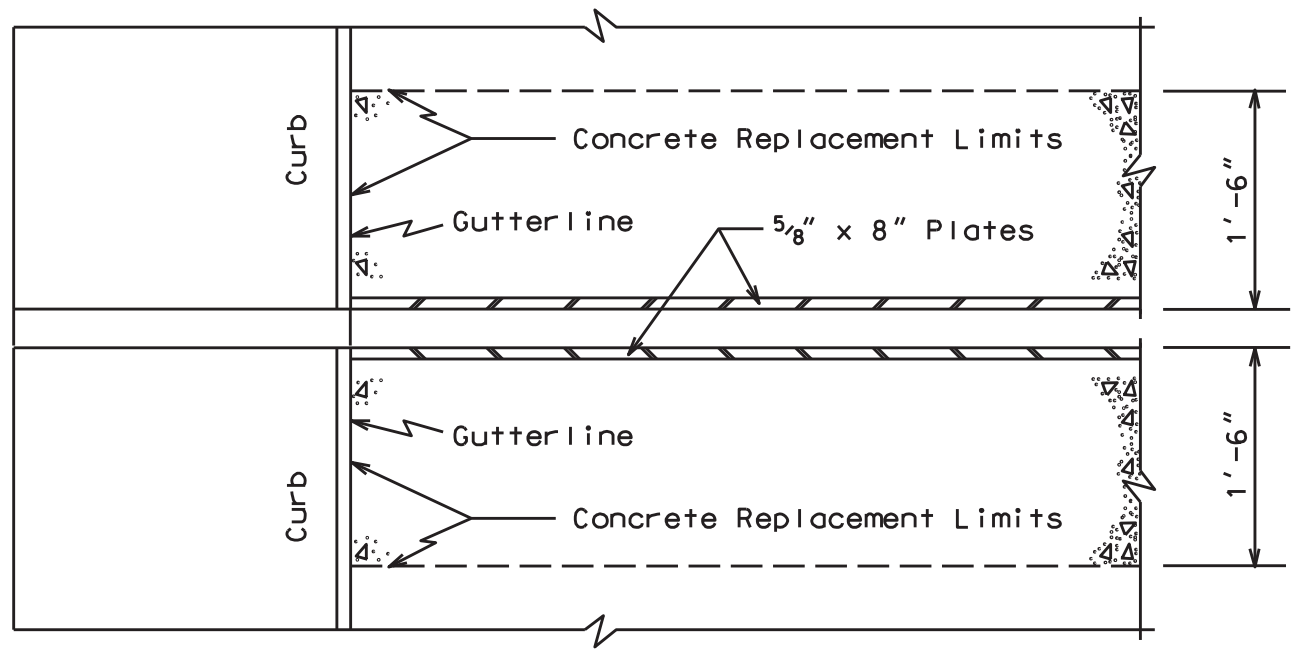
## EXISTING SECTION



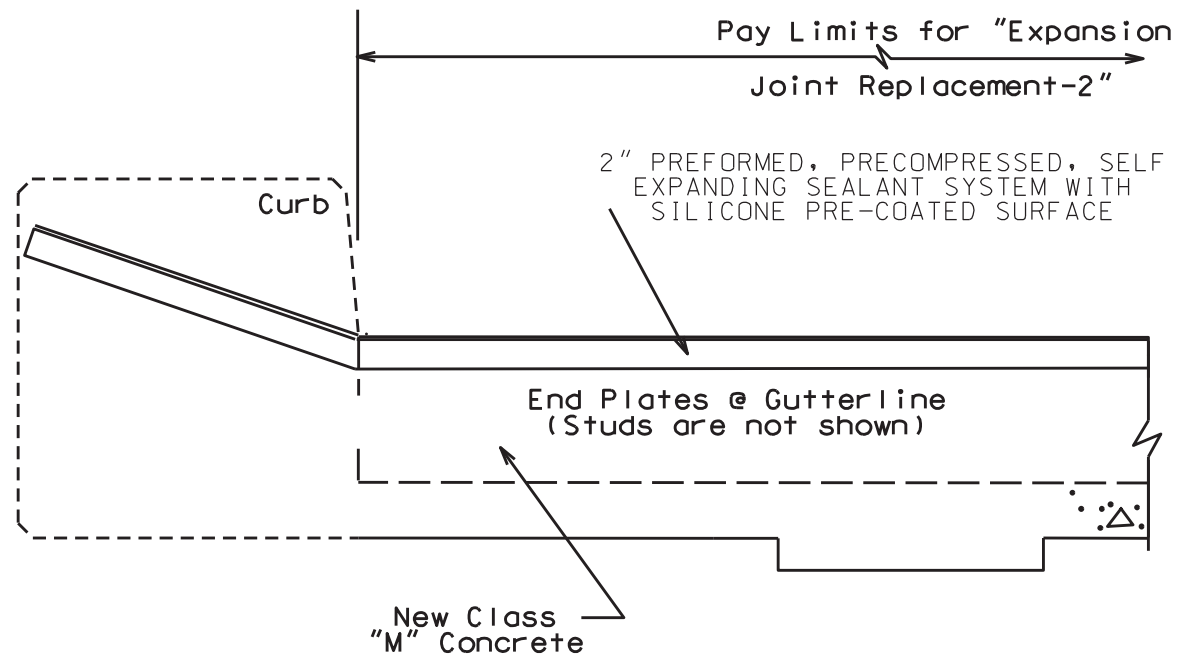
## PROPOSED SECTION

022B00063N

# CURB SECTION



# PLAN VIEW @ CURB

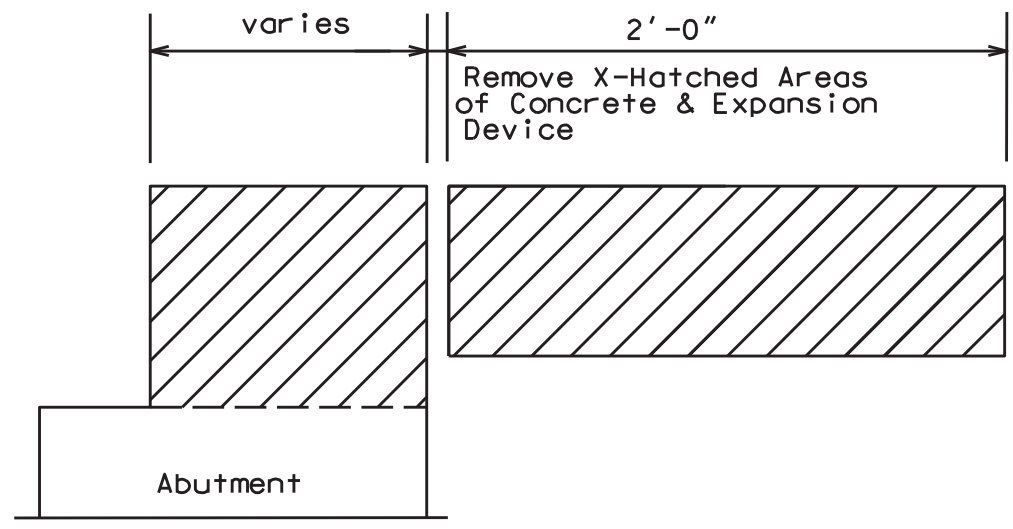


# PROPOSED SECTION @ CURB

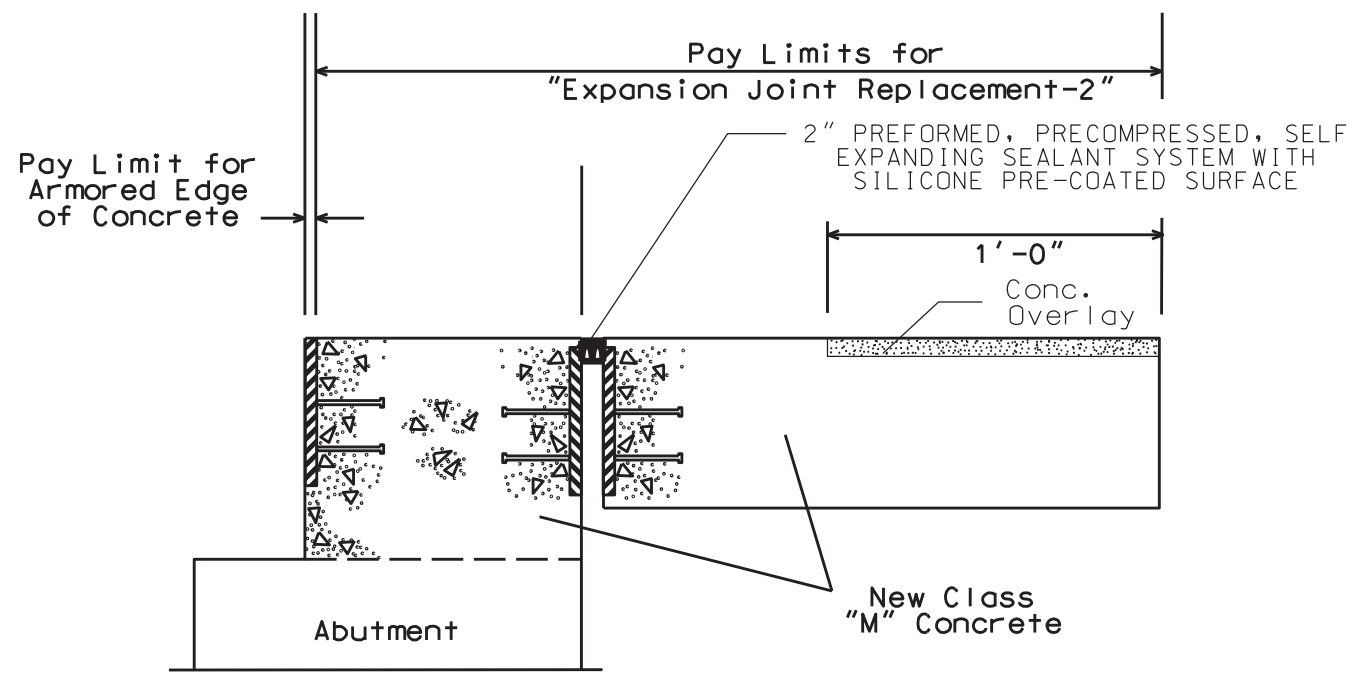
022B00017N

# EXPANSION DAM DETAIL

## Abutments #1 and #2



Clean & Leave  
Steel Reinf.  
in place.

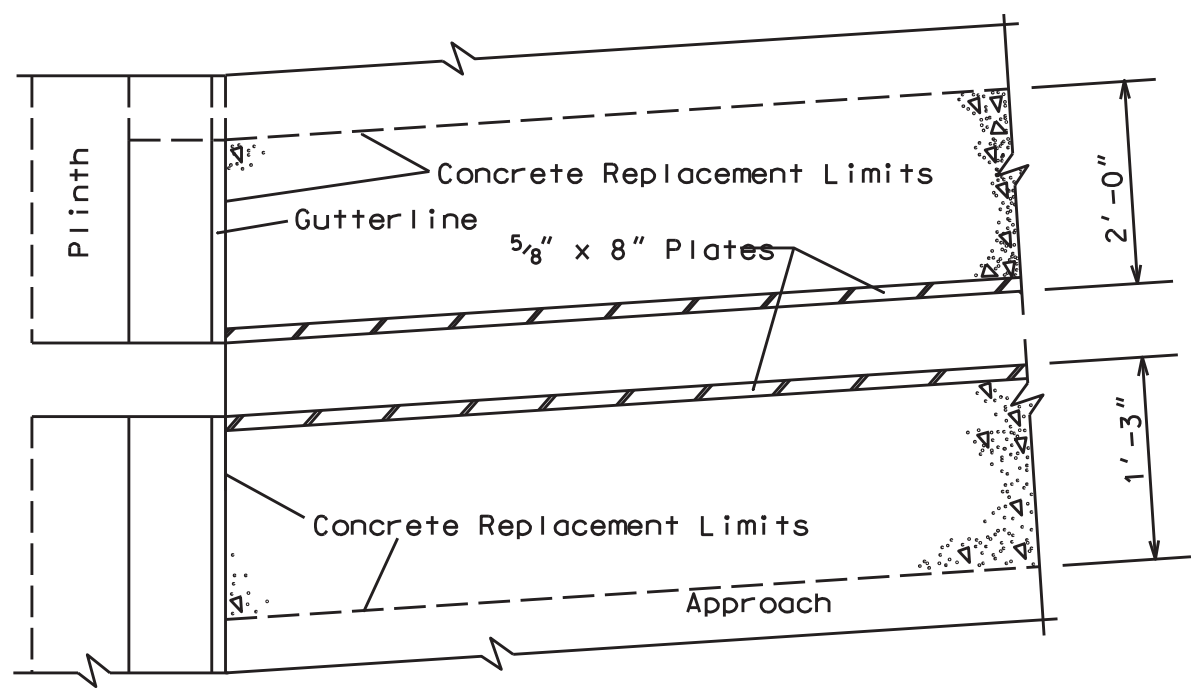


### PROPOSED SECTION

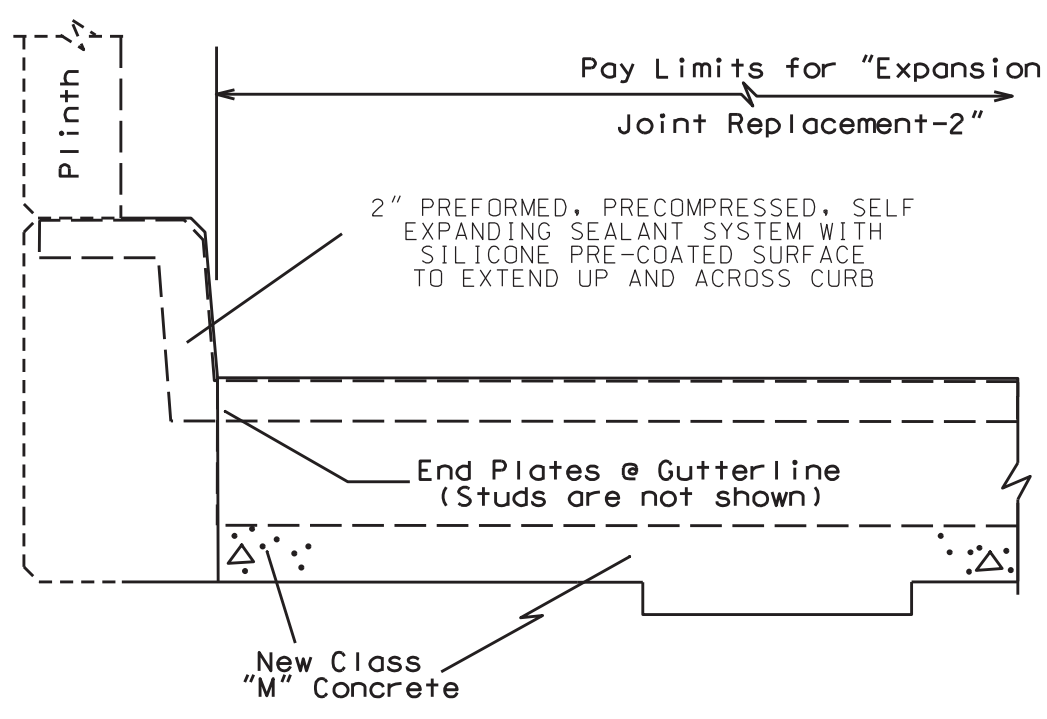
022B00017N

# CURB SECTION

Abutments #1 and #2



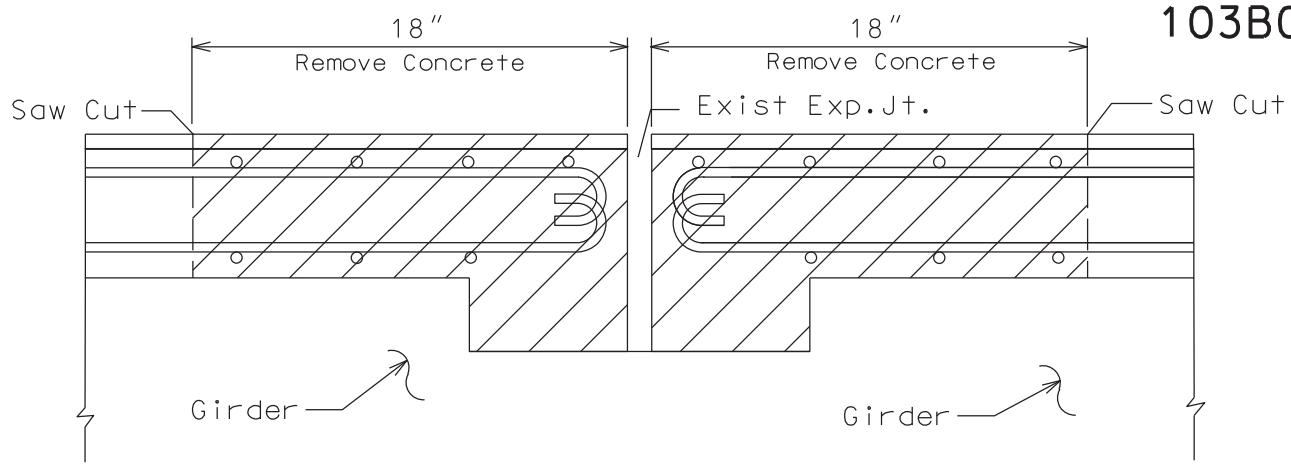
PLAN VIEW @ CURB



PROPOSED SECTION @ CURB

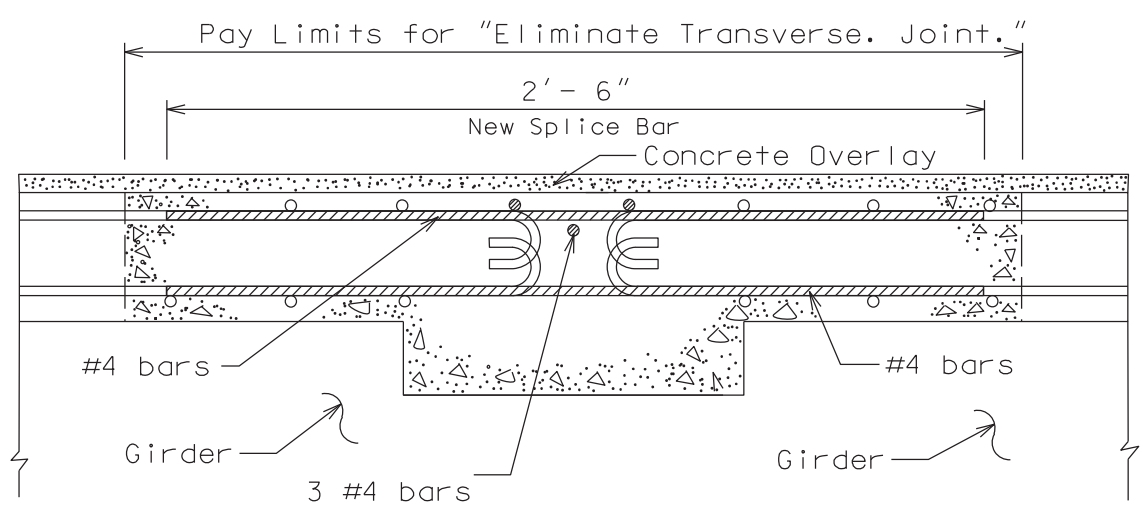
022B000063N  
032B000006N  
032B000007N  
035B000063N  
091B000045N  
103B000023N

# ELIMINATE TRANSVERSE JOINT DETAIL



NOTE: Do not disturb existing Steel Reinforcement

# EXISTING SECTION @ Transverse Joint

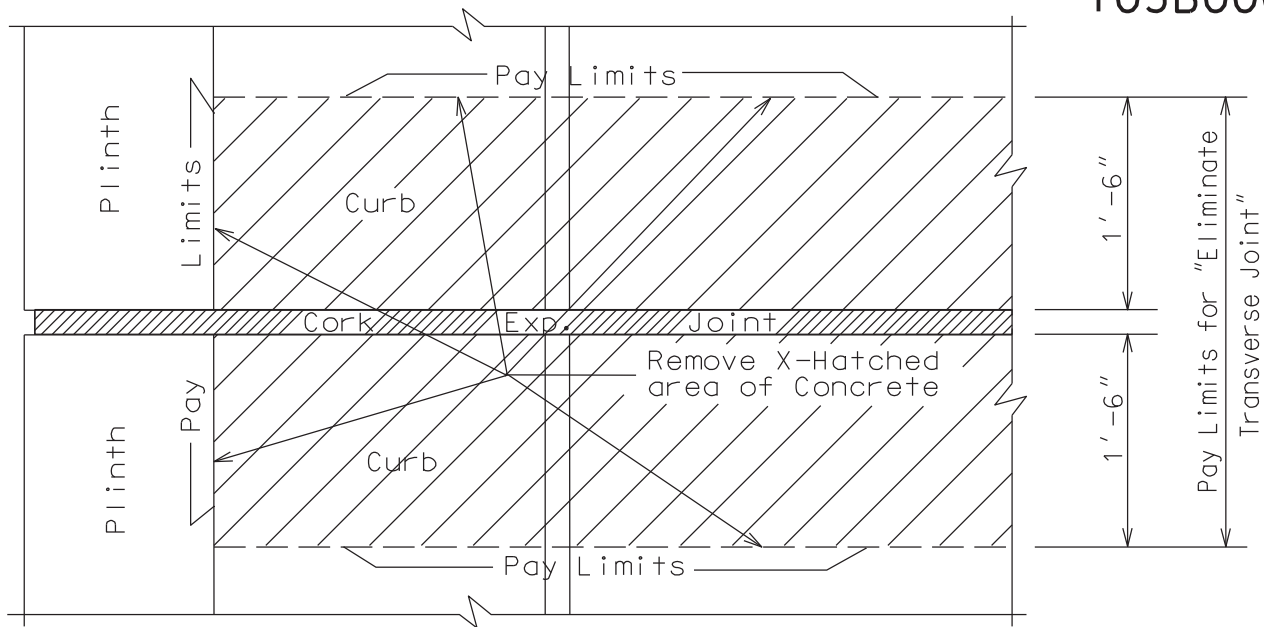


# PROPOSED SECTION @ Transverse Joint

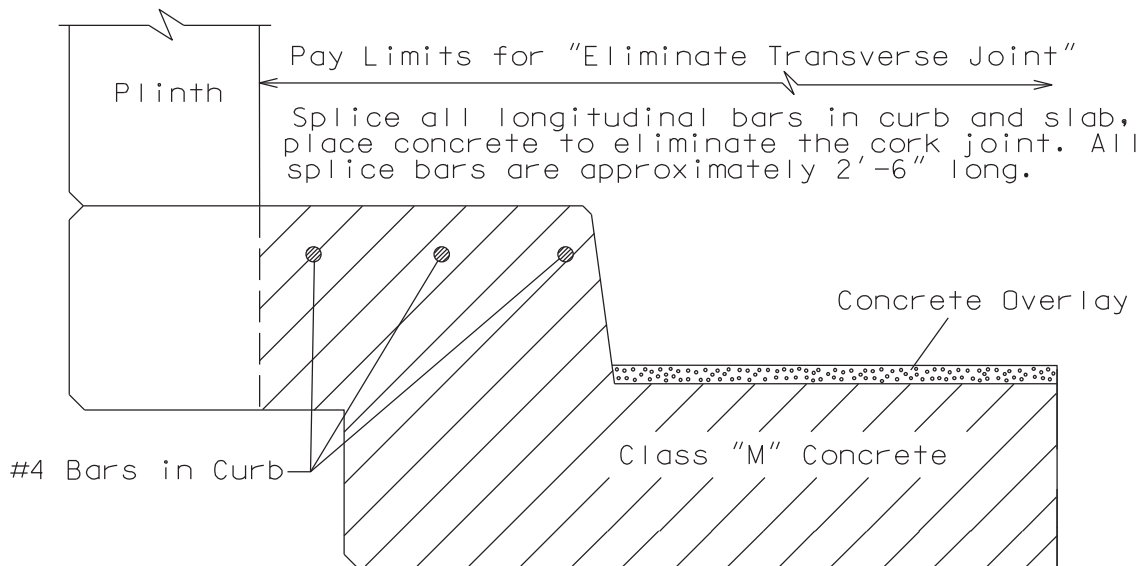


# ELIMINATE TRANSVERSE JOINT DETAIL

022B000063N  
032B000006N  
032B000007N  
035B000063N  
091B000045N  
103B000023N



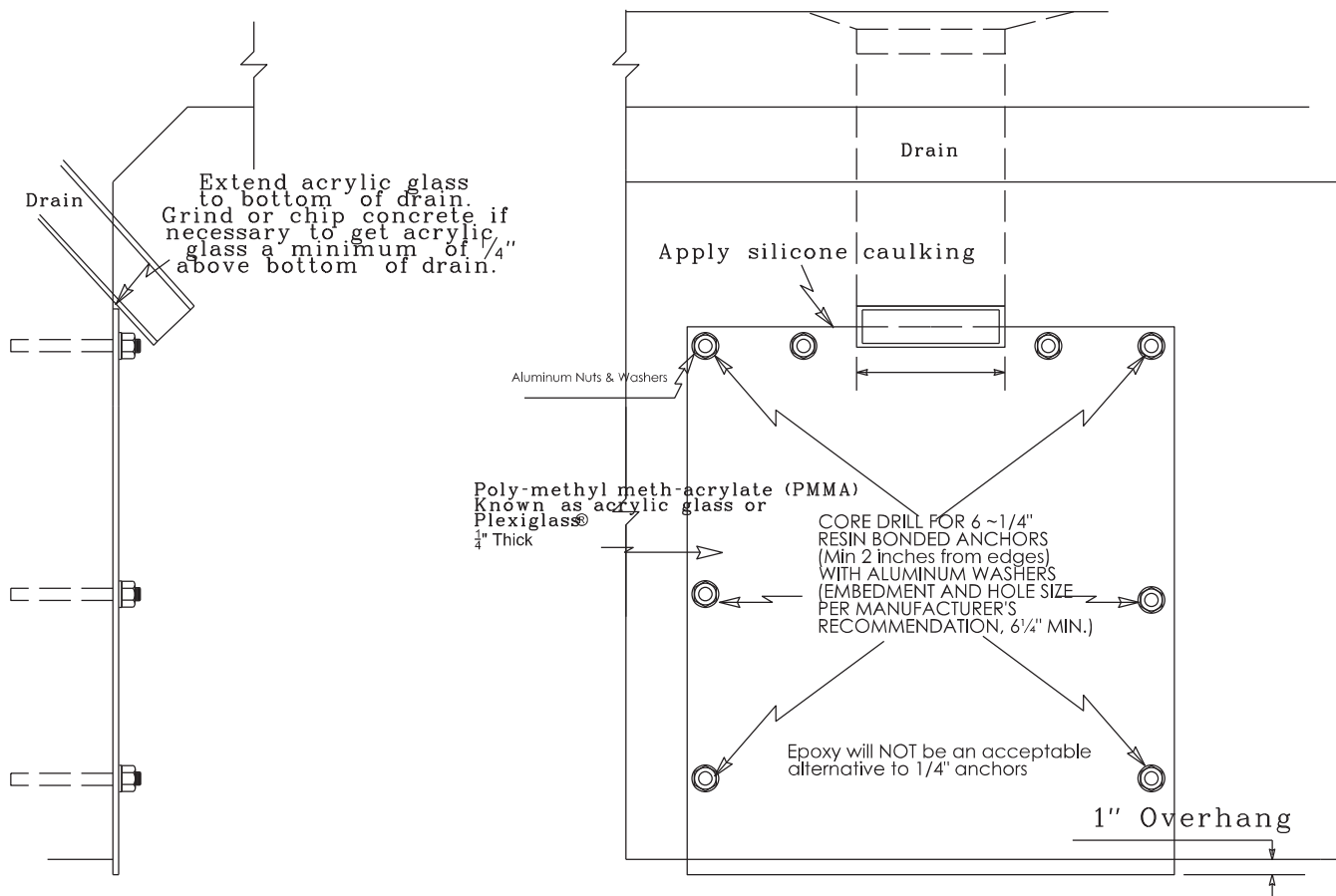
## EXISTING PLAN VIEW @ CURB



## PROPOSED SECTION @ CURB

035B00063N  
091B00045N

# ACRYLIC GLASS DETAIL



SECTION  
NOT TO SCALE

PLAN  
NOT TO SCALE

035B00063N	12 drains, 18"x 36" pieces = 54 sqft
091B00045N	18 drains, 30"x 36" pieces = 135 sqft

**PART II**  
**SPECIFICATIONS AND STANDARD DRAWINGS**

### **SPECIFICATIONS REFERENCE**

Any reference in the plans or proposal to previous editions of the *Standard Specifications for Road and Bridge Construction* and *Standard Drawings* are superseded by *Standard Specifications for Road and Bridge Construction, Edition of 2012* and *Standard Drawings, Edition of 2016*.

## **SUPPLEMENTAL SPECIFICATIONS**

The contractor shall use the Supplemental Specifications that are effective at the time of letting.  
The Supplemental Specifications can be found at the following link:

<http://transportation.ky.gov/Construction/Pages/Kentucky-Standard-Specifications.aspx>

## STANDARD DRAWINGS THAT APPLY

### TRAFFIC ~ *TEMPORARY* ~ TRAFFIC CONTROL

LANE CLOSURE USING TRAFFIC SIGNALS	TTC-110
LANE CLOSURE MULTI-LANE HIGHWAY CASE I	TTC-115

### DEVICES

POST SPLICING DETAIL	TTD-110
----------------------	---------

### BRIDGES

#### MISCELLANEOUS STANDARDS

BRIDGE RESTORATION AND WATERPROOFING WITH CONCRETE OVERLAYS	BGX-009-04
--	------------

### JOINTS

NEOPRENE EXPANSION DAMS AND ARMORED EDGES	BJE-001-11
---	------------

## **PART III**

### **EMPLOYMENT, WAGE AND RECORD REQUIREMENTS**

**TRANSPORTATION CABINET  
DEPARTMENT OF HIGHWAYS**

**LABOR AND WAGE REQUIREMENTS  
APPLICABLE TO OTHER THAN FEDERAL-AID SYSTEM PROJECTS**

- I. Application
- II. Nondiscrimination of Employees (KRS 344)

**I. APPLICATION**

1. These contract provisions shall apply to all work performed on the contract by the contractor with his own organization and with the assistance of workmen under his immediate superintendence and to all work performed on the contract by piecework, station work or by subcontract. The contractor's organization shall be construed to include only workmen employed and paid directly by the contractor and equipment owned or rented by him, with or without operators.

2. The contractor shall insert in each of his subcontracts all of the stipulations contained in these Required Provisions and such other stipulations as may be required.

3. A breach of any of the stipulations contained in these Required Provisions may be grounds for termination of the contract.

3. If the contractor is in control of apprenticeship or other training or retraining, including on-the-job training programs, he shall not discriminate against an individual because of his race, color, religion, national origin, sex, disability or age forty (40) and over, in admission to, or employment in any program established to provide apprenticeship or other training.

4. The contractor will send to each labor union or representative of workers with which he has a collective bargaining agreement or other contract or understanding, a notice to be provided advising the said labor union or workers' representative of the contractor's commitments under this section, and shall post copies of the notice in conspicuous places available to employees and applicants for employment. The contractor will take such action with respect to any subcontract or purchase order as the administrating agency may direct as a means of enforcing such provisions, including sanctions for non-compliance.

Revised: January 25, 2017

**II. NONDISCRIMINATION OF EMPLOYEES**

**AN ACT OF THE KENTUCKY  
GENERAL ASSEMBLY TO PREVENT  
DISCRIMINATION IN EMPLOYMENT  
KRS CHAPTER 344  
EFFECTIVE JUNE 16, 1972**

The contract on this project, in accordance with KRS Chapter 344, provides that during the performance of this contract, the contractor agrees as follows:

1. The contractor shall not fail or refuse to hire, or shall not discharge any individual, or otherwise discriminate against an individual with respect to his compensation, terms, conditions, or privileges of employment, because of such individual's race, color, religion, national origin, sex, disability or age (forty and above); or limit, segregate, or classify his employees in any way which would deprive or tend to deprive an individual of employment opportunities or otherwise adversely affect his status as an employee, because of such individual's race, color, religion, national origin, sex, disability or age forty (40) and over. The contractor agrees to post in conspicuous places, available to employees and applicants for employment, notices to be provided setting forth the provisions of this nondiscrimination clause.

2. The contractor shall not print or publish or cause to be printed or published a notice or advertisement relating to employment by such an employer or membership in or any classification or referral for employment by the employment agency, indicating any preference, limitation, specification, or discrimination, based on race, color, religion, national origin, sex, or age forty (40) and over, or because the person is a qualified individual with a disability, except that such a notice or advertisement may indicate a preference, limitation, or specification based on religion, national origin, sex, or age forty (40) and over, or because the person is a qualified individual with a disability, when religion, national origin, sex, or age forty (40) and over, or because the person is a qualified individual with a disability, is a bona fide occupational qualification for employment.



## EXECUTIVE BRANCH CODE OF ETHICS

In the 1992 regular legislative session, the General Assembly passed and Governor Brereton Jones signed Senate Bill 63 (codified as KRS 11A), the Executive Branch Code of Ethics, which states, in part:

KRS 11A.040 (7) provides:

No present or former public servant shall, within six (6) months following termination of his office or employment, accept employment, compensation, or other economic benefit from any person or business that contracts or does business with, or is regulated by, the state in matters in which he was directly involved during the last thirty-six (36) months of his tenure. This provision shall not prohibit an individual from returning to the same business, firm, occupation, or profession in which he was involved prior to taking office or beginning his term of employment, or for which he received, prior to his state employment, a professional degree or license, provided that, for a period of six (6) months, he personally refrains from working on any matter in which he was directly involved during the last thirty-six (36) months of his tenure in state government. This subsection shall not prohibit the performance of ministerial functions, including but not limited to filing tax returns, filing applications for permits or licenses, or filing incorporation papers, nor shall it prohibit the former officer or public servant from receiving public funds disbursed through entitlement programs.

KRS 11A.040 (9) states:

A former public servant shall not represent a person or business before a state agency in a matter in which the former public servant was directly involved during the last thirty-six (36) months of his tenure, for a period of one (1) year after the latter of:

- a) The date of leaving office or termination of employment; or
- b) The date the term of office expires to which the public servant was elected.

This law is intended to promote public confidence in the integrity of state government and to declare as public policy the idea that state employees should view their work as a public trust and not as a way to obtain private benefits.

If you have worked for the executive branch of state government within the past six months, you may be subject to the law's prohibitions. The law's applicability may be different if you hold elected office or are contemplating representation of another before a state agency.

Also, if you are affiliated with a firm which does business with the state and which employs former state executive-branch employees, you should be aware that the law may apply to them.

In case of doubt, the law permits you to request an advisory opinion from the Executive Branch Ethics Commission, 3 Fountain Place, Frankfort, Kentucky 40601; telephone (502) 564-7954.

Revised: January 27, 2017

### **Kentucky Equal Employment Opportunity Act of 1978**

The requirements of the Kentucky Equal Employment Opportunity Act of 1978 (KRS 45.560-45.640) shall apply to this Contract. The apparent low Bidder will be required to submit EEO forms to the Division of Construction Procurement, which will then forward to the Finance and Administration Cabinet for review and approval. No award will become effective until all forms are submitted and EEO/CC has certified compliance. The required EEO forms are as follows:

- EEO-1: Employer Information Report
- Affidavit of Intent to Comply
- Employee Data Sheet
- Subcontractor Report

These forms are available on the Finance and Administration's web page under ***Vendor Information, Standard Attachments and General Terms*** at the following address:  
**<https://www.eProcurement.ky.gov>**.

Bidders currently certified as being in compliance by the Finance and Administration Cabinet may submit a copy of their approval letter in lieu of the referenced EEO forms.

For questions or assistance please contact the Finance and Administration Cabinet by email at **[finance.contractcompliance@ky.gov](mailto:finance.contractcompliance@ky.gov)** or by phone at 502-564-2874.

# EMPLOYEE RIGHTS UNDER THE FAIR LABOR STANDARDS ACT

THE UNITED STATES DEPARTMENT OF LABOR WAGE AND HOUR DIVISION

## FEDERAL MINIMUM WAGE

# \$7.25

 PER HOUR

BEGINNING JULY 24, 2009

**OVERTIME PAY** At least 1½ times your regular rate of pay for all hours worked over 40 in a workweek.

**CHILD LABOR** An employee must be at least **16** years old to work in most non-farm jobs and at least **18** to work in non-farm jobs declared hazardous by the Secretary of Labor.

Youths **14** and **15** years old may work outside school hours in various non-manufacturing, non-mining, non-hazardous jobs under the following conditions:

**No more than**

- **3** hours on a school day or **18** hours in a school week;
- **8** hours on a non-school day or **40** hours in a non-school week.

Also, work may not begin before **7 a.m.** or end after **7 p.m.**, except from June 1 through Labor Day, when evening hours are extended to **9 p.m.** Different rules apply in agricultural employment.

**TIP CREDIT** Employers of “tipped employees” must pay a cash wage of at least \$2.13 per hour if they claim a tip credit against their minimum wage obligation. If an employee's tips combined with the employer's cash wage of at least \$2.13 per hour do not equal the minimum hourly wage, the employer must make up the difference. Certain other conditions must also be met.

**ENFORCEMENT** The Department of Labor may recover back wages either administratively or through court action, for the employees that have been underpaid in violation of the law. Violations may result in civil or criminal action.

Employers may be assessed civil money penalties of up to \$1,100 for each willful or repeated violation of the minimum wage or overtime pay provisions of the law and up to \$11,000 for each employee who is the subject of a violation of the Act's child labor provisions. In addition, a civil money penalty of up to \$50,000 may be assessed for each child labor violation that causes the death or serious injury of any minor employee, and such assessments may be doubled, up to \$100,000, when the violations are determined to be willful or repeated. The law also prohibits discriminating against or discharging workers who file a complaint or participate in any proceeding under the Act.

**ADDITIONAL INFORMATION**

- Certain occupations and establishments are exempt from the minimum wage and/or overtime pay provisions.
- Special provisions apply to workers in American Samoa and the Commonwealth of the Northern Mariana Islands.
- Some state laws provide greater employee protections; employers must comply with both.
- The law requires employers to display this poster where employees can readily see it.
- Employees under 20 years of age may be paid \$4.25 per hour during their first 90 consecutive calendar days of employment with an employer.
- Certain full-time students, student learners, apprentices, and workers with disabilities may be paid less than the minimum wage under special certificates issued by the Department of Labor.

For additional information:



# 1-866-4-USWAGE

(1-866-487-9243)

TTY: 1-877-889-5627



# WWW.WAGEHOUR.DOL.GOV

U.S. Department of Labor | Wage and Hour Division

**PART IV**  
**INSURANCE**

## INSURANCE

The Contractor shall procure and maintain the following insurance in addition to the insurance required by law:

- 1) Commercial General Liability-Occurrence form – not less than \$2,000,000 General aggregate, \$2,000,000 Products & Completed Aggregate, \$1,000,000 Personal & Advertising, \$1,000,000 each occurrence.
- 2) Automobile Liability- \$1,000,000 per accident
- 3) Employers Liability:
  - a) \$100,000 Each Accident Bodily Injury
  - b) \$500,000 Policy limit Bodily Injury by Disease
  - c) \$100,000 Each Employee Bodily Injury by Disease
- 4) The insurance required above must be evidenced by a Certificate of Insurance and this Certificate of Insurance must contain one of the following statements:
  - a) "policy contains no deductible clauses."
  - b) "policy contains \_\_\_\_\_ (amount) deductible property damage clause but company will pay claim and collect the deductible from the insured."
- 5) KENTUCKY WORKMEN'S COMPENSATION INSURANCE. The contractor shall furnish evidence of coverage of all his employees or give evidence of self-insurance by submitting a copy of a certificate issued by the Workmen's Compensation Board.

The cost of insurance is incidental to all contract items. All subcontractors must meet the same minimum insurance requirements.

**PART V**  
**BID ITEMS**

**PROPOSAL BID ITEMS**

172918

Page 1 of 1

Report Date 11/13/17

**Section: 0001 - BRIDGE**

LINE	BID CODE	ALT	DESCRIPTION	QUANTITY	UNIT	UNIT PRIC	FP	AMOUNT
0010	02562		TEMPORARY SIGNS	1,043.00	SQFT		\$	
0020	02650		MAINTAIN & CONTROL TRAFFIC APPLIES TO 022B00017N	1.00	LS		\$	
0030	02650		MAINTAIN & CONTROL TRAFFIC APPLIES TO 032B00006N	1.00	LS		\$	
0040	02650		MAINTAIN & CONTROL TRAFFIC APPLIES TO 032B00007N	1.00	LS		\$	
0050	02650		MAINTAIN & CONTROL TRAFFIC APPLIES TO 091B00045N	1.00	LS		\$	
0060	02650		MAINTAIN & CONTROL TRAFFIC APPLIES TO 103B00023N	1.00	LS		\$	
0070	02653		LANE CLOSURE	14.00	EACH		\$	
0080	03295		EXPAN JOINT REPLACE 2 IN	92.00	LF		\$	
0090	03299		ARMORED EDGE FOR CONCRETE	399.90	LF		\$	
0100	03300		ELIMINATE TRANSVERSE JOINT	315.60	LF		\$	
0110	03302		REPAIR CONCRETE CURB	120.00	LF		\$	
0120	03304		BRIDGE OVERLAY APPROACH PAVEMENT	2,743.00	SQYD		\$	
0130	04933		TEMP SIGNAL 2 PHASE	5.00	EACH		\$	
0140	04934		TEMP SIGNAL MULTI PHASE	2.00	EACH		\$	
0150	06514		PAVE STRIPING-PERM PAINT-4 IN	6,740.00	LF		\$	
0160	06549		PAVE STRIPING-TEMP REM TAPE-B	3,500.00	LF		\$	
0170	06550		PAVE STRIPING-TEMP REM TAPE-W	7,000.00	LF		\$	
0180	06551		PAVE STRIPING-TEMP REM TAPE-Y	14,000.00	LF		\$	
0190	08150		STEEL REINFORCEMENT	5,177.00	LB		\$	
0200	08504		EPOXY SAND SLURRY	892.40	SQYD		\$	
0210	08510		REM EPOXY BIT FOREIGN OVERLAY	2,160.00	SQYD		\$	
0220	08510		REM EPOXY BIT FOREIGN OVERLAY EXISTING ASPHALT OVERLAY VARIES BETWEEN 6" - 12"	340.00	SQYD		\$	
0230	08526		CONC CLASS M FULL DEPTH PATCH	58.00	CUYD		\$	
0240	08534		CONCRETE OVERLAY-LATEX	116.90	CUYD		\$	
0250	08549		BLAST CLEANING	3,697.00	SQYD		\$	
0260	08551		MACHINE PREP OF SLAB	304.00	SQYD		\$	
0270	22146EN		CONCRETE PATCHING REPAIR	20.00	SQFT		\$	
0280	23879EC		ACRYLIC GLASS	189.00	SQFT		\$	
0290	24094EC		PARTIAL DEPTH PATCHING	77.70	CUYD		\$	

**Section: 0002 - DEMOBILIZATION**

LINE	BID CODE	ALT	DESCRIPTION	QUANTITY	UNIT	UNIT PRIC	FP	AMOUNT
0300	02569		DEMOBILIZATION	1.00	LS		\$	