



CALL NO. 405

CONTRACT ID. 192905

PULASKI - CUMBERLAND - ROCKCASTLE - CASEY COUNTIES

FED/STATE PROJECT NUMBER 121GR19M042-FE02

DESCRIPTION DISTRICT 8 BRIDGE OVERLAYS.

WORK TYPE BRIDGE DECK RESTORATION & WATERPROOFING

PRIMARY COMPLETION DATE 11/15/2019

LETTING DATE: April 26,2019

Sealed Bids will be received electronically through the Bid Express bidding service until 10:00 AM EASTERN DAYLIGHT TIME April 26,2019. Bids will be publicly announced at 10:00 AM EASTERN DAYLIGHT TIME.

NO PLANS ASSOCIATED WITH THIS PROJECT.

REQUIRED BID PROPOSAL GUARANTY: Not less than 5% of the total bid.

TABLE OF CONTENTS

PART I	SCOPE OF WORK
	<ul style="list-style-type: none">• PROJECT(S), COMPLETION DATE(S), & LIQUIDATED DAMAGES• CONTRACT NOTES• STATE CONTRACT NOTES• SPECIAL NOTE(S) APPLICABLE TO PROJECT• LIQUIDATED DAMAGES• TRAFFIC CONTROL PLAN• SKETCH MAP(S)• MATERIAL SUMMARY• BRIDGE DRAWINGS
PART II	SPECIFICATIONS AND STANDARD DRAWINGS
	<ul style="list-style-type: none">• SPECIFICATIONS REFERENCE• SUPPLEMENTAL SPECIFICATION• STANDARD DRAWINGS THAT APPLY
PART III	EMPLOYMENT, WAGE AND RECORD REQUIREMENTS
	<ul style="list-style-type: none">• LABOR AND WAGE REQUIREMENTS• EXECUTIVE BRANCH CODE OF ETHICS• KENTUCKY EQUAL EMPLOYMENT OPPORTUNITY ACT OF 1978 LOCALITY / STATE• PROJECT WAGE RATES / STATE
PART IV	INSURANCE
PART V	BID ITEMS

PART I
SCOPE OF WORK

ADMINISTRATIVE DISTRICT - 08

CONTRACT ID - 192905

121GR19M042-FE02

COUNTY - CASEY

PCN - MB02301271901
FE02 023 0127 B00016N

US 127 (MP 5.704). BRIDGE OVER SOUTH FORK CREEK.BRIDGE DECK RESTORATION & WATERPROOFING

GEOGRAPHIC COORDINATES LATITUDE 37:12:50.00 LONGITUDE 84:58:15.00

PCN - MB02301271902
FE02 023 0127 B00020N

US 127 (MP 9.78). BRIDGE OVER CALHOUN CREEK.BRIDGE DECK RESTORATION & WATERPROOFING

GEOGRAPHIC COORDINATES LATITUDE 37:15:52.00 LONGITUDE 85:00:00.00

PCN - MB02301271903
FE02 023 0127 B00021N

US 127 (MP 13.316). BRIDGE OVER GREEN RIVER.BRIDGE DECK RESTORATION & WATERPROOFING

GEOGRAPHIC COORDINATES LATITUDE 37:18:37.00 LONGITUDE 84:56:25.00

COUNTY - CUMBERLAND

PCN - MB02900611902
FE02 029 0061 B00019N

KY 61 (MP 20.062). BRIDGE OVER LOGAN BRANCH.BRIDGE DECK RESTORATION & WATERPROOFING

GEOGRAPHIC COORDINATES LATITUDE 36:52:17.00 LONGITUDE 85:23:26.00

COUNTY - PULASKI

PCN - MB10001921901
FE02 100 0192 B00018N

KY 192 (MP 10.637). BRIDGE OVER BUCK CREEK.BRIDGE DECK RESTORATION & WATERPROOFING

GEOGRAPHIC COORDINATES LATITUDE 37:03:36.00 LONGITUDE 84:25:35.00

COUNTY - ROCKCASTLE

PCN - MB10200251901
FE02 102 0025 B00002N

US 25 (MP 20.405). BRIDGE OVER ROUNDSTONE CREEK.BRIDGE DECK RESTORATION & WATERPROOFING

GEOGRAPHIC COORDINATES LATITUDE 37:26:16.00 LONGITUDE 84:19:03.00

COMPLETION DATE(S):

COMPLETED BY 11/15/2019	APPLIES TO ENTIRE CONTRACT
30 CALENDAR Days	APPLIES TO 023B00016N
30 CALENDAR Days	APPLIES TO 023B00020N
30 CALENDAR Days	APPLIES TO 023B00021N
30 CALENDAR Days	APPLIES TO 029B00019N
30 CALENDAR Days	APPLIES TO 100B00018N
30 CALENDAR Days	APPLIES TO 102B00002N

CONTRACT NOTES

PROPOSAL ADDENDA

All addenda to this proposal must be applied when calculating bid and certified in the bid packet submitted to the Kentucky Department of Highways. Failure to use the correct and most recent addenda may result in the bid being rejected.

BID SUBMITTAL

Bidder must use the Department's electronic bidding software. The Bidder must download the bid file located on the Bid Express website (www.bidx.com) to prepare a bid packet for submission to the Department. The bidder must submit electronically using Bid Express.

JOINT VENTURE BIDDING

Joint venture bidding is permissible. All companies in the joint venture must be prequalified in one of the work types in the Qualifications for Bidders for the project. The bidders must get a vendor ID for the joint venture from the Division of Construction Procurement and register the joint venture as a bidder on the project. Also, the joint venture must obtain a digital ID from Bid Express to submit a bid. A joint bid bond of 5% may be submitted for both companies or each company may submit a separate bond of 5%.

UNDERGROUND FACILITY DAMAGE PROTECTION

The contractor shall make every effort to protect underground facilities from damage as prescribed in the Underground Facility Damage Protection Act of 1994, Kentucky Revised Statute KRS 367.4901 to 367.4917. It is the contractor's responsibility to determine and take steps necessary to be in compliance with federal and state damage prevention directives. When prescribed in said directives, the contractor shall submit Excavation Locate Requests to the Kentucky Contact Center (KY811) via web ticket entry. The submission of this request does not relieve the contractor from the responsibility of contacting non-member facility owners, whom shall be contacted through their individual Protection Notification Center. Non-compliance with these directives can result in the enforcement of penalties.

REGISTRATION WITH THE SECRETARY OF STATE BY A FOREIGN ENTITY

Pursuant to KRS 176.085(1)(b), an agency, department, office, or political subdivision of the Commonwealth of Kentucky shall not award a state contract to a person that is a foreign entity required by [KRS 14A.9-010](#) to obtain a certificate of authority to transact business in the Commonwealth ("certificate") from the Secretary of State under [KRS 14A.9-030](#) unless the person produces the certificate within fourteen (14) days of the bid or proposal opening. If the foreign entity is not required to obtain a certificate as provided in [KRS 14A.9-010](#), the foreign entity should identify the applicable exception. Foreign entity is defined within [KRS 14A.1-070](#).

For all foreign entities required to obtain a certificate of authority to transact business in the Commonwealth, if a copy of the certificate is not received by the contracting agency within the time frame identified above, the foreign entity's solicitation response shall be deemed non-responsive or the awarded contract shall be cancelled.

Businesses can register with the Secretary of State at <https://secure.kentucky.gov/sos/ftbr/welcome.aspx>.

SPECIAL NOTE FOR PROJECT QUESTIONS DURING ADVERTISEMENT

Questions about projects during the advertisement should be submitted in writing to the Division of Construction Procurement. This may be done by fax (502) 564-7299 or email to kytc.projectquestions@ky.gov. The Department will attempt to answer all submitted questions. The Department reserves the right not to answer if the question is not pertinent or does not aid in clarifying the project intent.

The deadline for posting answers will be 3:00 pm Eastern Daylight Time, the day preceding the Letting. Questions may be submitted until this deadline with the understanding that the later a question is submitted, the less likely an answer will be able to be provided.

The questions and answers will be posted for each Letting under the heading "Questions & Answers" on the Construction Procurement website (www.transportation.ky.gov/contract). The answers provided shall be considered part of this Special Note and, in case of a discrepancy, will govern over all other bidding documents.

HARDWOOD REMOVAL RESTRICTIONS

The US Department of Agriculture has imposed a quarantine in Kentucky and several surrounding states, to prevent the spread of an invasive insect, the emerald ash borer. Hardwood cut in conjunction with the project may not be removed from the state. Chipping or burning on site is the preferred method of disposal.

INSTRUCTIONS FOR EXCESS MATERIAL SITES AND BORROW SITES

Identification of excess material sites and borrow sites shall be the responsibility of the Contractor. The Contractor shall be responsible for compliance with all applicable state and federal laws and may wish to consult with the US Fish and Wildlife Service to seek protection under Section 10 of the Endangered Species Act for these activities.

ACCESS TO RECORDS

The contractor, as defined in KRS 45A.030 (9) agrees that the contracting agency, the Finance and Administration Cabinet, the Auditor of Public Accounts, and the Legislative Research Commission, or their duly authorized representatives, shall have access to any books, documents, papers, records, or other evidence, which are directly pertinent to this contract for the purpose of financial audit or program review. Records and other prequalification information confidentially

disclosed as part of the bid process shall not be deemed as directly pertinent to the contract and shall be exempt from disclosure as provided in KRS 61.878(1)(c). The contractor also recognizes that any books, documents, papers, records, or other evidence, received during a financial audit or program review shall be subject to the Kentucky Open Records Act, KRS 61.870 to 61.884.

In the event of a dispute between the contractor and the contracting agency, Attorney General, or the Auditor of Public Accounts over documents that are eligible for production and review, the Finance and Administration Cabinet shall review the dispute and issue a determination, in accordance with Secretary's Order 11-004.

April 30, 2018

SPECIAL NOTE FOR RECIPROCAL PREFERENCE

RECIPROCAL PREFERENCE TO BE GIVEN BY PUBLIC AGENCIES TO RESIDENT BIDDERS

By reference, KRS 45A.490 to 45A.494 are incorporated herein and in compliance regarding the bidders residency. Bidders who want to claim resident bidder status should complete the Affidavit for Claiming Resident Bidder Status along with their bid in the electronic bidding software. Submittal of the Affidavit should be done along the bid in Bid Express.

April 30, 2018

SPECIAL NOTE FOR BRIDGE RESTORATION AND WATERPROOFING WITH CONCRETE OVERLAYS

- I. DESCRIPTION.** Perform all work in accordance with the Kentucky Transportation Cabinet, Department of Highway's 2012 Standard Specifications for Road and Bridge Construction and applicable Supplemental Specifications, the Standard Drawings, this Note, and the attached detail drawings. Section references are to the Standard Specifications.

This work consists of the following: (1) Furnish all labor, materials, tools, and equipment; (2) Remove the existing overlay; (3) Complete full-depth and partial depth repairs as directed by the Engineer; (4) Repair/replace damaged and corroded reinforcing bars; (5) Place new concrete overlay and epoxy-sand slurry in accordance with Section 606; (6) Complete asphalt approach pavement; (7) Maintain and control traffic; and (8) Any other work specified as part of this contract.

All construction will be in accordance with Section 606 unless otherwise specified.

II. MATERIALS.

- A. Latex Concrete.** See Section 606.03.17.
- B. Class "M" Concrete.** Use either "M1" or "M2". See Section 601.
- C. Bituminous Asphalt.** Use CL2 ASPH SURF 0.38D PG64-22.
- D. Epoxy-Sand Slurry.** See Section 606.03.10.

III. CONSTRUCTION.

- A. Remove Existing Overlay.** In addition to Section 606.03.03, totally remove the existing concrete overlay by milling.
- B. Partial Depth Slab Repair and Latex Overlay.** Remove areas determined to be unsound by the Engineer via hydrodemolition or via hand held jackhammers weighing less than 45lbs in accordance with Section 606.02.10 D. Repair/Replace all damaged or severely corroded reinforcing bars prior to partial depth repair operation. The Department will not measure material removal and will consider this work incidental to the bid item "PARTIAL DEPTH PATCHING". Mix and place Latex Modified Concrete Overlay in accordance with Sections 606.03.08 and 606.03.17.
- C. Asphalt Approach Pavement.** Mill each existing asphalt approach for a distance of 50' from the bridge end. Remove the bituminous material uniformly by making an edge key, so as to provide a smooth transition to the finished bridge when a new bituminous overlay of compacted depth of approximately 1½" is added to the approaches. The grinding depth may vary depending of the condition of the existing approach and final elevation of bridge end. Dispose of all removed material away from the site.
- D. Surface Texturing.** Texture the concrete surface of the overlay in accordance with Section 609.03.10.

- IV. MEASUREMENT.** See Section 606 and the following:

A. Latex Modified Concrete for Overlay. The Department will measure the quantity in cubic yards using the theoretical volume as follows for each bridge:

023B00016N	(318' x 26' x 1.5")	= 38.3 cuyd
023B00020N	(215' x 26' x 1.5")	= 25.9 cuyd
023B00021N	(324' x 28' x 1.5")	= 42.0 cuyd
029B00019N	(114' x 24' x 1.5")	= 12.7 cuyd
100B00018N	(424' x 22' x 1.5")	= 43.2 cuyd
102B00002N	(129' x 26' x 1.5")	= 15.5 cuyd

B. Latex Modified Concrete for Partial Depth Patching and variable thickness of Overlay. The Department will measure the quantity in cubic yards by deducting the theoretical volume of bridge deck overlay (LMC) from the total volume (as indicated by the batch quantity tickets) of Concrete required to obtain the finished grade shown on the Plans or established by the Engineer.

C. Remove Existing Overlay. The Department will measure the removal of the existing overlay in square yards, which shall include all labor, equipment, and material needed to complete this work.

D. Steel Reinforcement. The Department will measure any reinforcing steel necessary for the partial or full depth patch in pounds, which shall include all labor, equipment, and material needed to complete this work.

E. Asphalt Approach Pavement. The Department will measure the quantity in square yards, which shall include all labor, equipment, and material needed to complete this work.

V. PAYMENT. See Section 606 and the following:

A. Latex Modified Concrete for Overlay. The Department will make payment for the Latex Modified Concrete under bid item #08534 "CONCRETE OVERLAY – LATEX" for the theoretical quantity.

B. Latex Modified Concrete for Partial Depth Patching and variable thickness of Overlay. The Department will make payment for the Partial Depth Patching under bid item #24094EC "PARTIAL DEPTH PATCHING". Payment will be for the quantity per cubic yard complete in place.

C. Remove Existing Overlay. The Department will make payment for the removal of the existing overlay under the bid item #08510 "REM EPOXY BIT FOREIGN OVERLAY". Payment will be for the square yard complete.

D. Steel Reinforcement. The Department will make payment for steel reinforcement, if necessary, under bid item #08150 "STEEL REINFORCEMENT". Payment will be at the unit price per pound.

E. Asphalt Approach Pavement. The Department will make payment for the completed and accepted quantity of this work under the bid item #03304 "BRIDGE OVERLAY APPROACH PAVEMENT".

SPECIAL NOTE FOR REPLACING EXPANSION DAMS AND/OR INSTALLING ARMORED EDGES FOR CONCRETE ON BRIDGES

I. DESCRIPTION. Perform all work in accordance with the Kentucky Transportation Cabinet, Department of Highway's 2012 Standard Specifications for Road and Bridge Construction and applicable Supplemental Specifications, the Standard Drawings, this Note, and the attached detail drawings. Section references are to the Standard Specifications.

This work consists of the following: (1) Furnish all labor, materials, tools, and equipment; (2) Remove existing concrete and expansion device(s) and/or bridge ends; (3) Install armored edges and new concrete as specified and in accordance with the attached detail drawings; (4) Install new joint seals (where required); (5) Maintain and control traffic; and (6) Any other work specified as part of this contract.

II. MATERIALS.

A. Class "M" Concrete. Use either "M1" or "M2". See Section 601.

B. Structural Steel. Use new, commercial grade steel suitable for welding. The Engineer will base acceptance on visual inspection. For armored edges that make up the 4" neoprene joint, use Steelflex Strip Seal expansion joint by DS Brown, or approved equal. To be approved, armored edge extrusions must be embedded.

C. Stud Anchors. The armored edge stud anchors are 3/4" x 6" embedded stud shear connectors conforming to ASTM A108, Grade 1015 (Nelson Studs or equal).

D. Steel Reinforcement. Use Grade 60. See Section 602.

E. Epoxy Bond Coat. See Section 511.

F. Neoprene Strip Seals. See attached detail drawings and Section 807.

III. EQUIPMENT.

A. Hammers. See Section 606.02.10 B.

B. Sawing Equipment. See Section 606.02.10 C.

C. Hydraulic Impact Equipment. See Section 606.02.10 D.

IV. CONSTRUCTION.

A. Remove Existing Materials. Remove existing Expansion Dam, Bridge End, Armored Edges and specified areas of concrete as shown on the attached sketches. Remove debris and/or expansion joint filler as directed by the Engineer. . Clean and leave all existing steel reinforcement encountered in place. Damaged steel reinforcement will be repaired/replaced as directed by the Engineer at no additional cost to the Department.

Dispose of all removed material entirely away from the job site. This work is incidental to the contract unit price for "Expansion Joint Replacement" or "Armored Edge for Concrete".

B. Place New Concrete and Armored Edges. After all specified existing materials have been removed; place new armored edges to match the grade of the proposed overlay or to match the original grade (See attached detail drawings). Place the new Class "M" concrete to the scarified grade and finish to receive the new overlay or

place the new Class "M" concrete to the original grade and finish with broom strokes drawn transversely from curb to curb.

All new structural steel shall be cleaned and painted in accordance with requirements of Section 607.03.23, except that surfaces to come in contact with concrete are not to be painted.

Blast clean all areas of existing concrete and structural steel to come in contact with new concrete until free of all laitance and deleterious substances immediately prior to the placement of the Class "M" Concrete. The surface areas of existing concrete to come in contact with the new Class "M" Concrete are to be coated with an epoxy bond coat immediately prior to placing new concrete in accordance with Section 511. The interfaces of the new and old concrete shall be as nearly vertical and horizontal as possible.

- C. Additional Steel Reinforcement.** Furnish for replacement, as directed by the Engineer, 13,940 linear feet of #4 steel reinforcing bars in 20' lengths. Place these bars in areas deemed by the Engineer to require additional reinforcement. Field cutting and bending is permitted. Do not place any additional steel reinforcement above the height of the top row of Nelson Studs on the armored edges. Ensure that all exposed steel reinforcement is tied in accordance with Section 602.03.04 prior to pouring the new Class "M" concrete. Deliver unused bars to the Local County Maintenance Barn. Payment will be made in accordance with Section 602.
- D. Stage Construction.** Installation of concrete and armored edges in two (or more if specified) stages is necessary. Join the armored edges at or near the centerline of the roadway or lane line, field weld and grind smooth.
- E. Preformed Neoprene Strip Seal.** Place the preformed joint seal in one continuous, unbroken length. Place neoprene strip seals as recommended by the manufacturer and in accordance with Section 609.03.04
- F. Shop Plans.** Shop plans will not be required. The Contractor is responsible for obtaining field measurements and supplying properly sized materials to complete the work.

V. MEASUREMENT.

- A. Expansion Joint Replacement – 4".** The Department will measure the quantity in linear feet from gutterline to gutterline along the centerline of the joint.
- B. Armored Edge for Concrete.** The Department will measure the quantity in linear feet from gutterline to gutterline along the face of the bridge end.
- C. Steel Reinforcement.** See Section 602.

VI. PAYMENT.

- A. Expansion Joint Replacement – 4".** Payment at the contract unit price per linear foot is full compensation for removing specified existing materials, furnishing and installing the new armored edges, concrete, neoprene strip seal or pre-compressed horizontal expansion joint system, and all incidental items necessary to complete the work (except the overlay material) within the specified pay limits as specified by this note and as shown on the attached detail drawings.
- B. Armored Edge for Concrete.** Payment at the contract unit price per linear foot is full compensation for removing specified existing materials, furnishing and installing

the new armored edges, concrete and all incidental items necessary to complete the work (except the overlay material) within the specified pay limits as specified by this note and as shown on the attached detail drawings.

C. Steel Reinforcement. See Section 602.

SPECIAL NOTE FOR ELIMINATING TRANSVERSE JOINTS ON BRIDGES

- I. DESCRIPTION.** Perform all work in accordance with the Kentucky Transportation Cabinet, Department of Highway's 2012 Standard Specifications for Road and Bridge Construction.
- Remove existing concrete and existing joint material to eliminate the transverse joint. Install additional reinforcing steel and place concrete.
- II. MATERIALS.**
- A. Class "M" Concrete.** Use either "M1" or "M2". See Section 601.
 - B. Steel Reinforcement.** Use Grade 60. See Section 602.
 - C. Epoxy Bond Coat.** See Section 511.
- III. EQUIPMENT.**
- A. Hammers.** See Section 606.02.10 B.
 - B. Sawing Equipment.** See Section 606.02.10 C.
 - C. Hydraulic Impact Equipment.** See Section 606.02.10 D.
- IV. CONSTRUCTION.**
- A. Remove Existing Materials.** Remove the existing transverse joints, joint filler, and specified areas of concrete as shown on the plans, in accordance with Section 606.02.10 and 606.03.03, and as directed by the Engineer. Clean and leave all existing steel reinforcement encountered in place. Damaged steel reinforcement will be repaired/replaced as directed by the Engineer at no additional cost to the Department. Dispose of all removed material entirely away from the job site. This work is incidental to the contract unit price for "Eliminate Transverse Joint".
 - B. Additional Steel Reinforcement.** Furnish for this work steel reinforcing bars as shown on the plans. Splice these bars to the existing longitudinal reinforcement in the deck and curb/sidewalk in the areas of removed concrete to tie the slabs together as shown on the plans. Ensure that all exposed steel reinforcement is tied in accordance with Section 602.03.04 prior to pouring the new Class "M" concrete.
 - C. Place New Concrete.** Blast clean all areas of existing concrete and structural steel to come in contact with new concrete until free of all laitance and deleterious substances immediately prior to the placement of the Class "M" Concrete. The surface areas of existing concrete to come in contact with the new Class "M" Concrete are to be coated with an epoxy bond coat immediately prior to placing new concrete in accordance with Section 511. The interfaces of the new and old concrete shall be as nearly vertical and horizontal as possible.
Place new Class "M" Concrete to the specified grade and finish to receive the new overlay or as shown on the plans. On the sidewalk and curb, place the new concrete to original grade and finish to match the existing curb/sidewalk.
- V. MEASUREMENT.**
- A. Eliminate Transverse Joint.** The Department will measure the quantity in linear feet from plinth to plinth perpendicular to the centerline of the bridge.

B. Steel Reinforcement. See Section 602.

VI. PAYMENT.

A. Eliminate Transverse Joint. Payment at the contract unit price per linear foot is full compensation for furnishing equipment, labor, tools and materials needed to complete removal and disposal of the specified existing materials, cleaning and straightening of existing steel reinforcement, furnishing and installing the concrete, and all incidental items necessary to complete the work (except the overlay material if specified elsewhere in the contract) within the specified pay limits as indicated on the drawings.

B. Steel Reinforcement. See Section 602.

SPECIAL NOTE FOR CONTRACT COMPLETION DATE AND LIQUIDATED DAMAGES ON BRIDGE REPAIR CONTRACTS

- I. COMPLETION DATE.** The Contractor has the option of selecting the starting date for this Contract. Once selected, notify the Department in writing of the date selected at least two weeks prior to beginning work. All work is to be completed by November 15, 2019. An allotted number of Calendar days are assigned to each structure in this contract as shown below.

<u>STRUCTURE</u>	<u>NO. OF CALENDAR DAYS</u>	<u>COMPLETION DATE</u>
023B00016N	30	November 15, 2019
023B00020N	30	November 15, 2019
023B00021N	30	November 15, 2019
029B00019N	30	November 15, 2019
100B00018N	30	November 15, 2019
102B00002N	30	November 15, 2019

Contrary to Section 108.07.02, the Engineer will begin charging calendar days for a structure on the day the Contractor starts work or sets up traffic control on that particular structure.

- II. LIQUIDATED DAMAGES.** Liquidated damages will be assessed the Contractor in accordance with the Transportation Cabinet, Department of Highway's 2012 Standard Specifications for Road and Bridge Construction, Section 108.09, when either the allotted number of calendar days or the November 15, 2019 date is exceeded.

Contrary to the Standard Specifications, liquidated damages will be assessed the Contractor during the months of December, January, February and March when the contract time has expired on any individual bridge or bridges. Contract time will be charged during these months.

All construction must be completed in accordance with the weather limitations specified in Section 606 and/or Section 601 as applicable. No extension of Contract time will be granted due to inclement weather or temperature limitations that occur due to starting work on the Contract or a structure late in the construction season.

SPECIAL NOTE FOR TRAFFIC CONTROL ON BRIDGE REPAIR CONTRACTS

I. TRAFFIC CONTROL GENERAL

Except as provided herein, traffic shall be maintained in accordance with the 2012 Standard Specifications, Section 112. Except for the roadway and traffic control bid items listed, all items of work necessary to maintain and control traffic will be paid at the lump sum bid price to "Maintain and Control Traffic".

Contrary to Section 106.01, traffic control devices used on this project may be new or used in new condition, at the beginning of the work and maintained in like new condition until completion of the work.

II. TRAFFIC COORDINATOR

Furnish a Traffic Coordinator as per Section 112. The Traffic Coordinator shall inspect the project maintenance of traffic, at least three times daily, or as directed by the Engineer, during the Contractor's operations and at any time a lane closure is in place. The personnel shall have access on the project to a radio or telephone to be used in case of emergencies or accidents.

The Traffic Coordinator shall report all incidents throughout the work zone to the Engineer on the project. The Contractor shall furnish the name and telephone number where the Traffic Coordinator can be contacted at all times.

III. SIGNS

Contrary to Section 112.04.02, only long term signs (sign intended to be continuously in place for more than 3 days) will be measured for payment; short term signs (signs intended to be left in place for 3 days or less) will not be measured for payment but will be incidental to Maintain and Control Traffic.

The contractor is to install warning signs for wide loads in advance of the bridge under the direction of the Engineer. The Department will not measure installation, maintenance, or removal for payment, and will consider these incidentals to Maintain and Control Traffic.

IV. TEMPORARY PAVEMENT STRIPING

Skip lines and/or solid lines through the length of the tapers for lane closures and other striping as directed by the Engineer shall be temporarily covered with 6" black removable tape. Permanent removal of all other pavement striping for traffic control shall be considered incidental to Maintain and Control Traffic. Temporary pavement striping shall be paid only once per course in accordance with Section 112.04.07. The Contractor shall replace any temporary striping that becomes damaged or fails to adhere to the pavement before dark on the day of the notification. Liquidated damages shall be assessed to the Contractor at a rate of \$500 per day for failing to replace temporary striping within this time limit.

V. PROJECT PHASING & CONSTRUCTION PROCEDURES

Maintain one lane of traffic during construction in accordance with Standard Drawing No. TTC-110 for lane closures, and the attached detail drawing. The minimum clear lane width required is as follows:

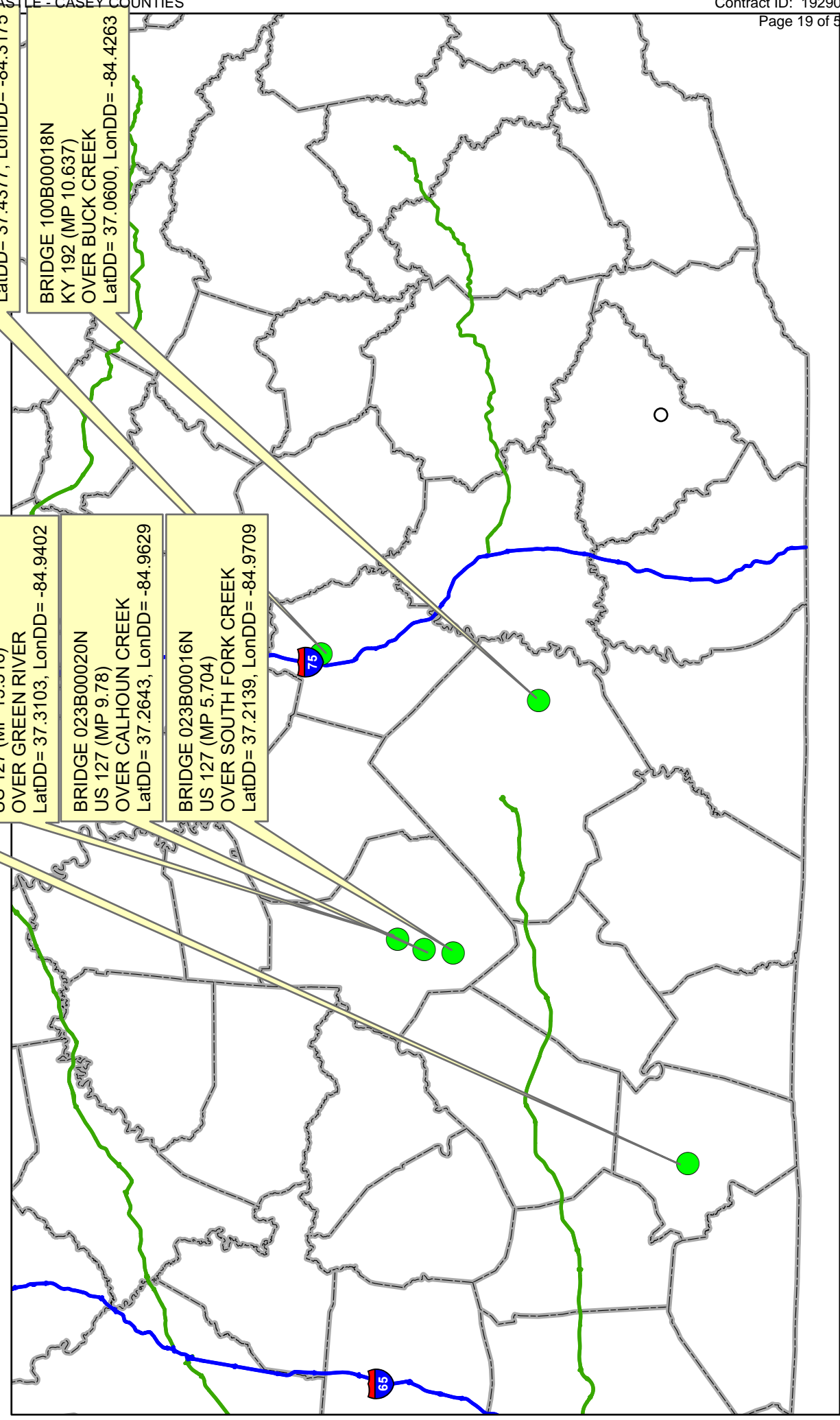
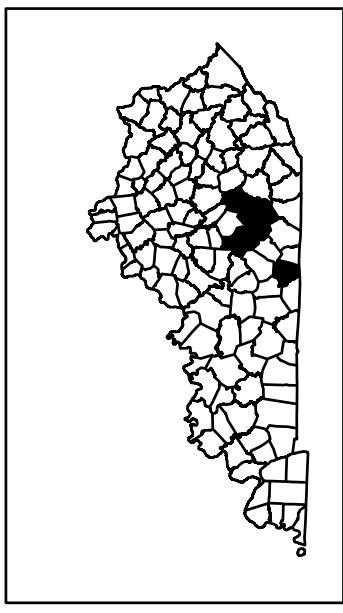
023B00016N	12'-0"
023B00020N	12'-0"
023B00021N	13'-0"
029B00019N	11'-0"
100B00018N	10'-6"
102B00002N	12'-0"

VI. TEMPORARY SIGNAL

Provide, install, and maintain a temporary 2 phase or multi phase traffic signal as specified below. The Contractor must provide a 24-hour contact person and number available to maintain the temporary signals as needed.

023B00016N	2 phase signal
023B00020N	2 phase signal
023B00021N	multi phase signal
029B00019N	2 phase signal
100B00018N	2 phase signal
102B00002N	2 phase signal

CASEY, CUMBERLAND, PULASKI, & ROCKCASTLE COUNTIES



BRIDGE 029B00019N
KY 90 (MP 9.492)
OVER ALLEN CREEK
LatDD= 36.8080, LonDD= -85.4302

BRIDGE 023B00021N
US 127 (MP 13.316)
OVER GREEN RIVER
LatDD= 37.3103, LonDD= -84.9402

BRIDGE 023B00020N
US 127 (MP 9.78)
OVER CALHOUN CREEK
LatDD= 37.2643, LonDD= -84.9629

BRIDGE 023B00016N
US 127 (MP 5.704)
OVER SOUTH FORK CREEK
LatDD= 37.2139, LonDD= -84.9709

BRIDGE 102B00002N
US 25 (MP 20.404)
OVER ROUNDSTONE CREEK
LatDD= 37.4377, LonDD= -84.3175

BRIDGE 100B00018N
KY 192 (MP 10.637)
OVER BUCK CREEK
LatDD= 37.0600, LonDD= -84.4263

MATERIAL SUMMARY

CONTRACT ID: 192905

121GR19M042-FE02

MB02301271901

US 127 (MP 5.704). BRIDGE OVER SOUTH FORK CREEK. BRIDGE DECK RESTORATION & WATERPROOFING.

Project Line No	Bid Code	DESCRIPTION	Quantity	Unit
0005	02562	TEMPORARY SIGNS	149.00	SQFT
0010	02650	MAINTAIN & CONTROL TRAFFIC - APPLIES TO 023B00016N	1.00	LS
0015	02653	LANE CLOSURE	2.00	EACH
0020	03298	EXPAN JOINT REPLACE 4 IN	30.00	LF
0025	03299	ARMORED EDGE FOR CONCRETE	60.00	LF
0030	03300	ELIMINATE TRANSVERSE JOINT	136.00	LF
0035	03304	BRIDGE OVERLAY APPROACH PAVEMENT	288.90	SQYD
0040	04933	TEMP SIGNAL 2 PHASE	1.00	EACH
0045	06514	PAVE STRIPING-PERM PAINT-4 IN	1,392.00	LF
0050	06549	PAVE STRIPING-TEMP REM TAPE-B	500.00	LF
0055	06550	PAVE STRIPING-TEMP REM TAPE-W	1,000.00	LF
0060	06551	PAVE STRIPING-TEMP REM TAPE-Y	2,000.00	LF
0065	08150	STEEL REINFORCEMENT	2,271.20	LB
0070	08504	EPOXY SAND SLURRY	270.90	SQYD
0075	08510	REM EPOXY BIT FOREIGN OVERLAY	919.00	SQYD
0080	08526	CONC CLASS M FULL DEPTH PATCH	10.00	CUYD
0085	08534	CONCRETE OVERLAY-LATEX	38.30	CUYD
0090	08549	BLAST CLEANING	1,190.00	SQYD
0095	22146EN	CONCRETE PATCHING REPAIR	100.00	SQFT
0100	24094EC	PARTIAL DEPTH PATCHING	25.50	CUYD
0105	02569	DEMOBILIZATION	1.00	LS
0110	23879EC	ACRYLIC GLASS	144.00	SQFT

MATERIAL SUMMARY

CONTRACT ID: 192905

121GR19M042-FE02

MB02301271902

US 127 (MP 9.78). BRIDGE OVER CALHOUN CREEK. BRIDGE DECK RESTORATION & WATERPROOFING.

Project Line No	Bid Code	DESCRIPTION	Quantity	Unit
0115	02562	TEMPORARY SIGNS	149.00	SQFT
0120	02650	MAINTAIN & CONTROL TRAFFIC - APPLIES TO 023B00020N	1.00	LS
0125	02653	LANE CLOSURE	2.00	EACH
0130	03299	ARMORED EDGE FOR CONCRETE	73.50	LF
0135	03300	ELIMINATE TRANSVERSE JOINT	81.60	LF
0140	03304	BRIDGE OVERLAY APPROACH PAVEMENT	288.90	SQYD
0145	04933	TEMP SIGNAL 2 PHASE	1.00	EACH
0150	06514	PAVE STRIPING-PERM PAINT-4 IN	734.00	LF
0155	06549	PAVE STRIPING-TEMP REM TAPE-B	500.00	LF
0160	06550	PAVE STRIPING-TEMP REM TAPE-W	1,000.00	LF
0165	06551	PAVE STRIPING-TEMP REM TAPE-Y	2,000.00	LF
0170	08150	STEEL REINFORCEMENT	801.60	LB
0175	08504	EPOXY SAND SLURRY	183.10	SQYD
0180	08510	REM EPOXY BIT FOREIGN OVERLAY	621.00	SQYD
0185	08534	CONCRETE OVERLAY-LATEX	25.90	CUYD
0190	08549	BLAST CLEANING	804.00	SQYD
0195	24094EC	PARTIAL DEPTH PATCHING	17.30	CUYD
0200	02569	DEMOBILIZATION	1.00	LS
0205	23879EC	ACRYLIC GLASS	111.11	SQFT

MATERIAL SUMMARY

CONTRACT ID: 192905

121GR19M042-FE02

MB02301271903

US 127 (MP 13.316). BRIDGE OVER GREEN RIVER. BRIDGE DECK RESTORATION & WATERPROOFING.

Project Line No	Bid Code	DESCRIPTION	Quantity	Unit
0210	02562	TEMPORARY SIGNS	149.00	SQFT
0215	02650	MAINTAIN & CONTROL TRAFFIC - APPLIES TO 023B00021N	1.00	LS
0220	02653	LANE CLOSURE	2.00	EACH
0225	03298	EXPAN JOINT REPLACE 4 IN	29.80	LF
0230	03299	ARMORED EDGE FOR CONCRETE	59.60	LF
0235	03300	ELIMINATE TRANSVERSE JOINT	135.20	LF
0240	03304	BRIDGE OVERLAY APPROACH PAVEMENT	311.10	SQYD
0245	04934	TEMP SIGNAL MULTI PHASE	1.00	EACH
0250	06514	PAVE STRIPING-PERM PAINT-4 IN	1,696.00	LF
0255	06549	PAVE STRIPING-TEMP REM TAPE-B	500.00	LF
0260	06550	PAVE STRIPING-TEMP REM TAPE-W	1,000.00	LF
0265	06551	PAVE STRIPING-TEMP REM TAPE-Y	2,000.00	LF
0270	08150	STEEL REINFORCEMENT	1,296.20	LB
0275	08504	EPOXY SAND SLURRY	276.00	SQYD
0280	08510	REM EPOXY BIT FOREIGN OVERLAY	1,008.00	SQYD
0285	08534	CONCRETE OVERLAY-LATEX	42.00	CUYD
0290	08549	BLAST CLEANING	1,284.00	SQYD
0295	24094EC	PARTIAL DEPTH PATCHING	28.00	CUYD
0300	02569	DEMOBILIZATION	1.00	LS

MATERIAL SUMMARY

CONTRACT ID: 192905

121GR19M042-FE02

MB02900611902

KY 61 (MP 20.062). BRIDGE OVER LOGAN BRANCH. BRIDGE DECK RESTORATION & WATERPROOFING.

Project Line No	Bid Code	DESCRIPTION	Quantity	Unit
0500	02562	TEMPORARY SIGNS	149.00	SQFT
0505	02650	MAINTAIN & CONTROL TRAFFIC - APPLIES TO 029B00019N	1.00	LS
0510	02653	LANE CLOSURE	2.00	EACH
0515	03299	ARMORED EDGE FOR CONCRETE	48.00	LF
0520	03300	ELIMINATE TRANSVERSE JOINT	56.00	LF
0525	03304	BRIDGE OVERLAY APPROACH PAVEMENT	266.70	SQYD
0530	04933	TEMP SIGNAL 2 PHASE	1.00	EACH
0535	06514	PAVE STRIPING-PERM PAINT-4 IN	499.00	LF
0540	06549	PAVE STRIPING-TEMP REM TAPE-B	500.00	LF
0545	06550	PAVE STRIPING-TEMP REM TAPE-W	1,000.00	LF
0550	06551	PAVE STRIPING-TEMP REM TAPE-Y	2,000.00	LF
0555	08150	STEEL REINFORCEMENT	868.40	LB
0560	08504	EPOXY SAND SLURRY	97.10	SQYD
0565	08510	REM EPOXY BIT FOREIGN OVERLAY	304.00	SQYD
0570	08526	CONC CLASS M FULL DEPTH PATCH	5.00	CUYD
0575	08534	CONCRETE OVERLAY-LATEX	12.70	CUYD
0580	08549	BLAST CLEANING	401.00	SQYD
0585	24094EC	PARTIAL DEPTH PATCHING	8.40	CUYD
0590	02569	DEMOBILIZATION	1.00	LS
0595	23879EC	ACRYLIC GLASS	37.50	SQFT

MATERIAL SUMMARY

CONTRACT ID: 192905

121GR19M042-FE02

MB10001921901

KY 192 (MP 10.637). BRIDGE OVER BUCK CREEK. BRIDGE DECK RESTORATION & WATERPROOFING.

Project Line No	Bid Code	DESCRIPTION	Quantity	Unit
0405	02562	TEMPORARY SIGNS	149.00	SQFT
0410	02650	MAINTAIN & CONTROL TRAFFIC - APPLIES TO 100B00018N	1.00	LS
0415	02653	LANE CLOSURE	2.00	EACH
0420	03298	EXPAN JOINT REPLACE 4 IN	22.00	LF
0425	03299	ARMORED EDGE FOR CONCRETE	44.00	LF
0430	03300	ELIMINATE TRANSVERSE JOINT	148.20	LF
0435	03304	BRIDGE OVERLAY APPROACH PAVEMENT	244.40	SQYD
0440	04933	TEMP SIGNAL 2 PHASE	1.00	EACH
0445	06514	PAVE STRIPING-PERM PAINT-4 IN	2,096.00	LF
0450	06549	PAVE STRIPING-TEMP REM TAPE-B	500.00	LF
0455	06550	PAVE STRIPING-TEMP REM TAPE-W	1,000.00	LF
0460	06551	PAVE STRIPING-TEMP REM TAPE-Y	2,000.00	LF
0465	08150	STEEL REINFORCEMENT	3,206.40	LB
0470	08504	EPOXY SAND SLURRY	298.40	SQYD
0475	08510	REM EPOXY BIT FOREIGN OVERLAY	1,036.00	SQYD
0480	08534	CONCRETE OVERLAY-LATEX	43.20	CUYD
0485	08549	BLAST CLEANING	1,335.00	SQYD
0490	24094EC	PARTIAL DEPTH PATCHING	28.80	CUYD
0495	02569	DEMOBILIZATION	1.00	LS

MATERIAL SUMMARY

CONTRACT ID: 192905

121GR19M042-FE02

MB10200251901

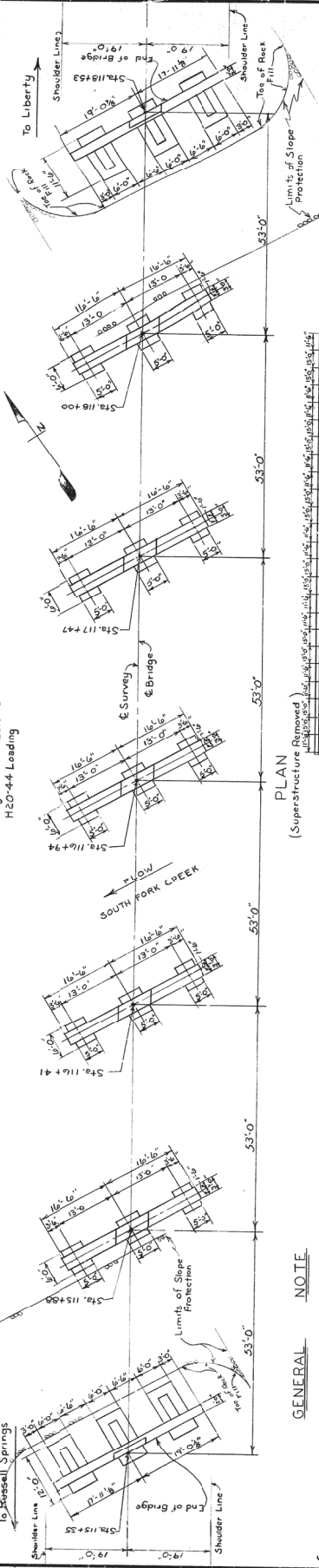
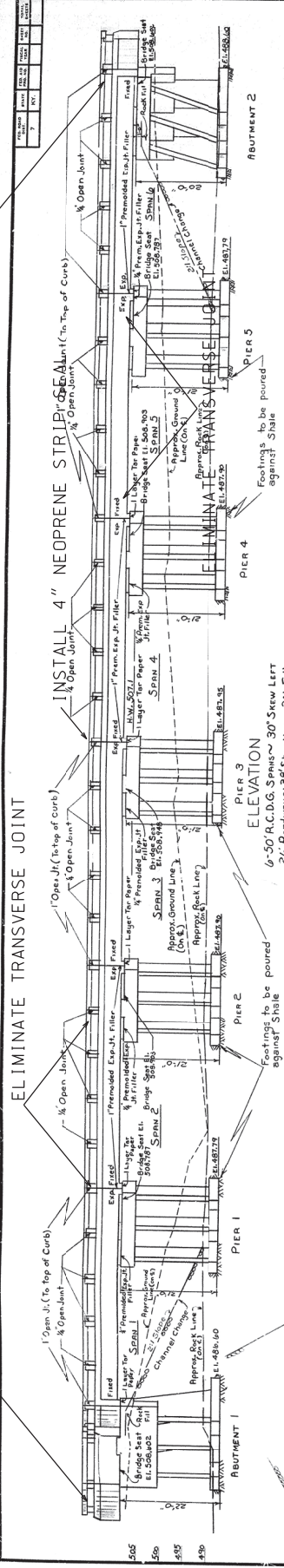
US 25 (MP 20.405). BRIDGE OVER ROUNDSTONE CREEK. BRIDGE DECK RESTORATION & WATERPROOFING.

Project Line No	Bid Code	DESCRIPTION	Quantity	Unit
0305	02562	TEMPORARY SIGNS	149.00	SQFT
0310	02650	MAINTAIN & CONTROL TRAFFIC - APPLIES TO 102B00002N	1.00	LS
0315	02653	LANE CLOSURE	2.00	EACH
0320	03299	ARMORED EDGE FOR CONCRETE	52.00	LF
0325	03300	ELIMINATE TRANSVERSE JOINT	62.00	LF
0330	03304	BRIDGE OVERLAY APPROACH PAVEMENT	289.00	SQYD
0335	04933	TEMP SIGNAL 2 PHASE	1.00	EACH
0340	06514	PAVE STRIPING-PERM PAINT-4 IN	916.00	LF
0345	06549	PAVE STRIPING-TEMP REM TAPE-B	500.00	LF
0350	06550	PAVE STRIPING-TEMP REM TAPE-W	1,000.00	LF
0355	06551	PAVE STRIPING-TEMP REM TAPE-Y	2,000.00	LF
0360	08150	STEEL REINFORCEMENT	868.40	LB
0365	08504	EPOXY SAND SLURRY	124.20	SQYD
0370	08510	REM EPOXY BIT FOREIGN OVERLAY	373.00	SQYD
0375	08526	CONC CLASS M FULL DEPTH PATCH	20.00	CUYD
0380	08534	CONCRETE OVERLAY-LATEX	15.50	CUYD
0385	08549	BLAST CLEANING	497.00	SQYD
0390	22146EN	CONCRETE PATCHING REPAIR	40.00	SQFT
0395	24094EC	PARTIAL DEPTH PATCHING	10.40	CUYD
0400	02569	DEMOBILIZATION	1.00	LS

023B00016N

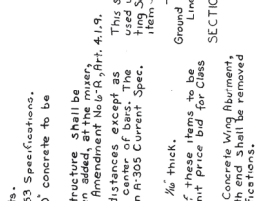
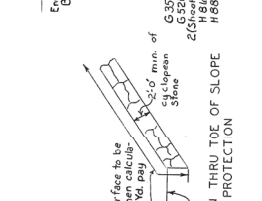
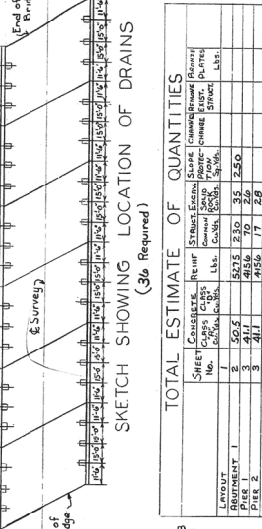
INSTALL ARMORED EDGE

ELIMINATE TRANSVERSE JOINT



BILL OF INCIDENTAL MATERIAL

ITEM NO.	DESCRIPTION
1	Center Strip
2	Steel Deck
3	Formwork
4	Reinforcing Bars
5	Expansion Joints
6	Concrete
7	Gravel
8	Asphalt
9	Paint
10	Other



Bridge over South Fork Creek
COMMONWEALTH OF KENTUCKY
 DEPARTMENT OF HIGHWAYS
 COUNTY OF CASEY
 LIBERTY~RUSSELL SPRINGS
 ROAD PROJECT NO. 5122 (4)
 STATION 116+54 DRAWING NO. 116/9
 BRIDGE NUMBER 22-87-C-116/9

TOTAL ESTIMATE OF QUANTITIES

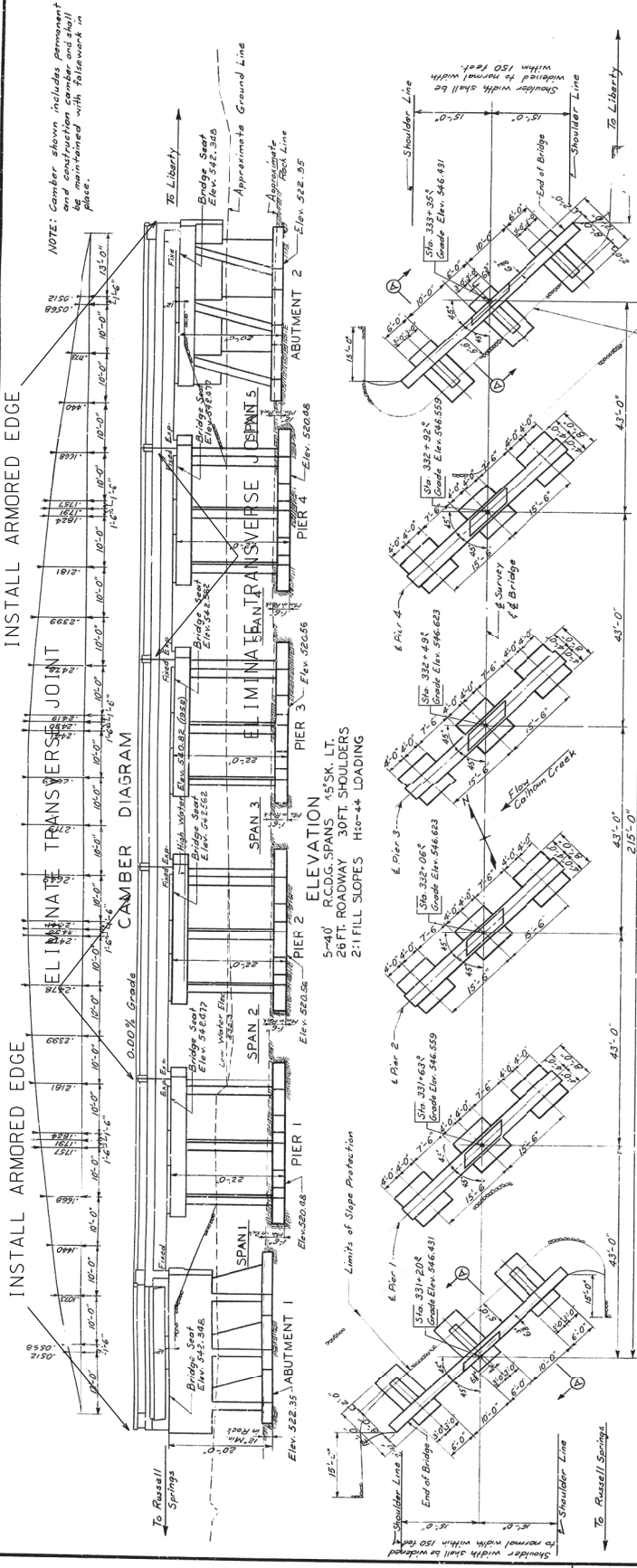
ITEM	Quantity	Unit	Value
Concrete	12,500	cu yd	1,250,000
Reinforcing Bars	150,000	lbs	15,000,000
Formwork	10,000	sq ft	1,000,000
Steel Deck	10,000	sq ft	1,000,000
Expansion Joints	10	linear ft	1,000,000
Gravel	10,000	cu yd	1,000,000
Asphalt	10,000	cu yd	1,000,000
Paint	10,000	gal	1,000,000
Other	10,000	unit	1,000,000
TOTAL			12,500,000

GENERAL NOTE
 Kentucky Department of Highways, 1945 Standard with Amendments.
 Bridge designed for H20-44 Loading as specified in AASHTO, 1933 Specifications.
 Concrete to be used throughout except in Handrail, Class D concrete to be used in Handrail.
REINFORCEMENT: Class A and Class D concrete on the bridge superstructure shall be reinforced with normal Portland Cement concrete to which may be added an approved air-entraining admixture, as specified by Amendment No. 19 (Art. 4.1.9). Dimensions shown for concrete to bars are clear dimensions except as otherwise noted. Dimensions for bar spacing are center to center of bars. The reinforcement shall conform to ASTM Designation A-305 Current Specification. Beveled edges to be provided unless otherwise noted.
THE DRAINS: To be commercial grade Tar Paper or Roofing felt approximately 1/8" thick.
FLOOR DRAINS - COPPER STRIP - EXPANSION JOINT MATERIAL: The cost of these items to be included in the unit price bid for Class A Concrete.
REMOVAL OF EXISTING STRUCTURE: Existing Concrete Wing Abutment on South End and Concrete Wing Abutment on North End shall be removed. 3" x 6" Steel Bents and 2" x 4" Steel Cylinders (per Section II of the Specifications).
SLOPE PROTECTION: Slope protection shall be Cypripetean Stone (no mortar) in accordance with Div. 7, Section II of the Specifications.
EXPANSION PLATES: All plates to be ASTM A-307 Class C or B-307 Class C current specifications with sliding surfaces finely polished. Machine bolts to be included but are not included in bid for plates. Cost of bolts to be included in unit price.

REVISIONS

NO.	DATE	DESCRIPTION
1	10/1/54	As Issued
2	10/15/54	Revised
3	10/20/54	Revised
4	10/25/54	Revised
5	11/1/54	Revised
6	11/15/54	Revised
7	11/20/54	Revised
8	11/25/54	Revised
9	12/1/54	Revised
10	12/15/54	Revised
11	12/20/54	Revised
12	12/25/54	Revised
13	1/1/55	Revised
14	1/15/55	Revised
15	1/20/55	Revised
16	1/25/55	Revised
17	2/1/55	Revised
18	2/15/55	Revised
19	2/20/55	Revised
20	2/25/55	Revised
21	3/1/55	Revised
22	3/15/55	Revised
23	3/20/55	Revised
24	3/25/55	Revised
25	4/1/55	Revised
26	4/15/55	Revised
27	4/20/55	Revised
28	4/25/55	Revised
29	5/1/55	Revised
30	5/15/55	Revised
31	5/20/55	Revised
32	5/25/55	Revised
33	6/1/55	Revised
34	6/15/55	Revised
35	6/20/55	Revised
36	6/25/55	Revised
37	7/1/55	Revised
38	7/15/55	Revised
39	7/20/55	Revised
40	7/25/55	Revised
41	8/1/55	Revised
42	8/15/55	Revised
43	8/20/55	Revised
44	8/25/55	Revised
45	9/1/55	Revised
46	9/15/55	Revised
47	9/20/55	Revised
48	9/25/55	Revised
49	10/1/55	Revised
50	10/15/55	Revised
51	10/20/55	Revised
52	10/25/55	Revised
53	11/1/55	Revised
54	11/15/55	Revised
55	11/20/55	Revised
56	11/25/55	Revised
57	12/1/55	Revised
58	12/15/55	Revised
59	12/20/55	Revised
60	12/25/55	Revised
61	1/1/56	Revised
62	1/15/56	Revised
63	1/20/56	Revised
64	1/25/56	Revised
65	2/1/56	Revised
66	2/15/56	Revised
67	2/20/56	Revised
68	2/25/56	Revised
69	3/1/56	Revised
70	3/15/56	Revised
71	3/20/56	Revised
72	3/25/56	Revised
73	4/1/56	Revised
74	4/15/56	Revised
75	4/20/56	Revised
76	4/25/56	Revised
77	5/1/56	Revised
78	5/15/56	Revised
79	5/20/56	Revised
80	5/25/56	Revised
81	6/1/56	Revised
82	6/15/56	Revised
83	6/20/56	Revised
84	6/25/56	Revised
85	7/1/56	Revised
86	7/15/56	Revised
87	7/20/56	Revised
88	7/25/56	Revised
89	8/1/56	Revised
90	8/15/56	Revised
91	8/20/56	Revised
92	8/25/56	Revised
93	9/1/56	Revised
94	9/15/56	Revised
95	9/20/56	Revised
96	9/25/56	Revised
97	10/1/56	Revised
98	10/15/56	Revised
99	10/20/56	Revised
100	10/25/56	Revised
101	11/1/56	Revised
102	11/15/56	Revised
103	11/20/56	Revised
104	11/25/56	Revised
105	12/1/56	Revised
106	12/15/56	Revised
107	12/20/56	Revised
108	12/25/56	Revised
109	1/1/57	Revised
110	1/15/57	Revised
111	1/20/57	Revised
112	1/25/57	Revised
113	2/1/57	Revised
114	2/15/57	Revised
115	2/20/57	Revised
116	2/25/57	Revised
117	3/1/57	Revised
118	3/15/57	Revised
119	3/20/57	Revised
120	3/25/57	Revised
121	4/1/57	Revised
122	4/15/57	Revised
123	4/20/57	Revised
124	4/25/57	Revised
125	5/1/57	Revised
126	5/15/57	Revised
127	5/20/57	Revised
128	5/25/57	Revised
129	6/1/57	Revised
130	6/15/57	Revised
131	6/20/57	Revised
132	6/25/57	Revised
133	7/1/57	Revised
134	7/15/57	Revised
135	7/20/57	Revised
136	7/25/57	Revised
137	8/1/57	Revised
138	8/15/57	Revised
139	8/20/57	Revised
140	8/25/57	Revised
141	9/1/57	Revised
142	9/15/57	Revised
143	9/20/57	Revised
144	9/25/57	Revised
145	10/1/57	Revised
146	10/15/57	Revised
147	10/20/57	Revised
148	10/25/57	Revised
149	11/1/57	Revised
150	11/15/57	Revised
151	11/20/57	Revised
152	11/25/57	Revised
153	12/1/57	Revised
154	12/15/57	Revised
155	12/20/57	Revised
156	12/25/57	Revised
157	1/1/58	Revised
158	1/15/58	Revised
159	1/20/58	Revised
160	1/25/58	Revised
161	2/1/58	Revised
162	2/15/58	Revised
163	2/20/58	Revised
164	2/25/58	Revised
165	3/1/58	Revised
166	3/15/58	Revised
167	3/20/58	Revised
168	3/25/58	Revised
169	4/1/58	Revised
170	4/15/58	Revised
171	4/20/58	Revised
172	4/25/58	Revised
173	5/1/58	Revised
174	5/15/58	Revised
175	5/20/58	Revised
176	5/25/58	Revised
177	6/1/58	Revised
178	6/15/58	Revised
179	6/20/58	Revised
180	6/25/58	Revised
181	7/1/58	Revised
182	7/15/58	Revised
183	7/20/58	Revised
184	7/25/58	Revised
185	8/1/58	Revised
186	8/15/58	Revised
187	8/20/58	Revised
188	8/25/58	Revised
189	9/1/58	Revised
190	9/15/58	Revised
191	9/20/58	Revised
192	9/25/58	Revised
193	10/1/58	Revised
194	10/15/58	Revised
195	10/20/58	Revised
196	10/25/58	Revised
197	11/1/58	Revised
198	11/15/58	Revised
199	11/20/58	Revised
200	11/25/58	Revised
201	12/1/58	Revised
202	12/15/58	Revised
203	12/20/58	Revised
204	12/25/58	Revised
205	1/1/59	Revised
206	1/15/59	Revised
207	1/20/59	Revised
208	1/25/59	Revised
209	2/1/59	Revised
210	2/15/59	Revised
211	2/20/59	Revised
212	2/25/59	Revised
213	3/1/59	Revised
214	3/15/59	Revised
215	3/20/59	Revised
216	3/25/59	Revised
217	4/1/59	Revised
218	4/15/59	Revised
219	4/20/59	Revised
220	4/25/59	Revised
221	5/1/59	Revised
222	5/15/59	Revised
223	5/20/59	Revised
224	5/25/59	Revised
225	6/1/59	Revised
226	6/15/59	Revised
227	6/20/59	Revised
228	6/25/59	Revised
229	7/1/59	Revised
230	7/15/59	Revised
231	7/20/59	Revised
232	7/25/59	Revised
233	8/1/59	Revised
234	8/15/59	Revised
235	8/20/59	Revised
236	8/25/59	Revised
237	9/1/59	Revised
238	9/15/59	Revised
239	9/20/59	Revised
240	9/25/59	Revised
241	10/1/59	Revised
242	10/15/59	Revised
243	10/20/59	Revised
244	10/25/59	Revised
245	11/1/59	Revised
246	11/15/59	Revised
247	11/20/59	Revised
248	11/25/59	Revised
249	12/1/59	Revised
250	12/15/59	Revised
251	12/20/59	Revised
252	12/25/59	Revised
253	1/1/60	Revised
254	1/15/60	Revised
255	1/20/60	Revised
256	1/25/60	Revised
257	2/1/60	Revised
258	2/15/60	Revised
259	2/20/60	Revised
260	2/25/60	Revised
261	3/1/60	Revised
262	3/15/60	Revised
263	3/20/60	Revised
264	3/25/60	Revised
265	4/1/60	Revised
266	4/15/60	Revised
267	4/20/60	Revised
268	4/25/60	Revised
269	5/1/60	Revised
270	5/15/60	Revised
271	5/20/60	Revised
272	5/25/60	Revised
273	6/1/60	Revised
274	6/15/60	Revised
275	6/20/60	Revised
276	6/25/60	Revised
277	7/1/60	Revised</

023B00020N



INSTALL ARMORED EDGE

ELIMINATE TRANSVERSE JOINT

INSTALL ARMORED EDGE

NOTE: Camber shown includes permanent and construction camber and shall be maintained with bituminous in place.

ELEVATION
 5-40' R.C.D.G. SPANS 15'SK. LT.
 26 FT. ROADWAY 30 FT. SHOULDERS
 2:1 FILL SLOPES H10-44 LOADING

PLAN
 (SUPERSTRUCTURE REMOVED)

GENERAL NOTE

- SPECIFICATIONS** Kentucky Department of Highways, 1945 Standards with Amendments.
- DESIGN LOAD** Bridge designed for H10-44 loading as specified in A.A.S.H.O. Specifications 1941.
- CONCRETE** Class 'A' concrete to be used throughout except in handrail. Class 'D' concrete to be used in handrail.
- REINFORCEMENT** Dimensions from face of concrete to bars are clear distances except as shown. Dimensions for bar spacing are distances center to center of bars.
- BEVELED EDGES** All exposed edges shall be beveled 1/8" unless otherwise noted.
- TAR PAPER** To be commercially grade Tar Paper or Roofing Felt, approximately 1/4" thick.
- FLOOR DRAINS - EXPANSION JOINT MATERIAL - COPPER STRIP - TAR PAPER** The cost of these items to be included in the unit price bid of Class 'A' concrete.
- PLACING FILL** The fill material must be placed in front and back of abutments in accordance with the specifications.
- EXPANSION PLATES** All plates to be A.S.T.M. A36, 1/2" or 3/4" thick. Type 10-2 current specifications with sliding surfaces only. All plates to be finished with a smooth surface. All bolts to be included in unit price bid for plates.
- SLOPE PROTECTION** Slope protection shall be cycloped stone (No mortar required) in accordance with Division 7, Section 6-1 of the Specifications.
- AIR ENTRAINMENT CONCRETE** Concrete for Class 'A' or Class 'D' of bridge superstructure shall be made with normal portland cement to which has been added the mixer, an approved air-entraining mixture in accordance with Amendment #6R, Article 4.1.9 of the Specifications.

BILL OF INCIDENTAL MATERIAL

ITEM	NO	DESCRIPTION
Copper Strip	4	See Standard Spec. Div. 7-2.1
Floor Drains	24	See Specs. 1 and 5
Expansion J. Material	6	See Specs. 1 and 5
Tar Paper	1	See Specs. 1 and 5
	3	1/2" x 1-0/8" x 37'-5" Paper 2-1/4"

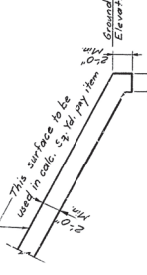
NOTE: Quantities shown in Bill of Incidental Material are approximate only, and the contractor shall be responsible for furnishing enough material to complete the work in accordance with the specifications.

PLAN
 SECTION

6-351
 H-84
 H-84
 G28-C
 (281)

TOTAL ESTIMATE OF QUANTITIES

ITEM	Sheet	Concrete	Reinforcement	Tar Paper	Expansion Joint	Copper Strip	Plates	Change	Scale	Notes
Abutment 1	1	2	31.9	5556	150	30	270			
Pier 1	3	61.6	9209	150	50					
Pier 2	3	61.6	9209	150	50					
Pier 3	3	61.6	9209	150	50					
Abutment 2	2	51.9	5556	150	30					
Span 1	0	75.8	17502	380	380					
Span 2	0	75.8	17502	380	380					
Span 3	0	75.8	17502	380	380					
Handrail	0	10.9	17502	380	380					
Expansion Plates	0	12.4	12	141.0						
Concrete	0	169								
Reinforcement	0	169								
Tar Paper	0	169								
Expansion Joint	0	169								
Copper Strip	0	169								
Plates	0	169								
Change	0	169								
Totals	1	220.5	111.9	100.50	850	270	1900			



Bridge over Calhoun Creek
 SHEET 91 THRU
 JUL 16 1956

COMMONWEALTH OF KENTUCKY
 DEPARTMENT OF HIGHWAYS
 FRANKFORT
 COUNTY OF
 CASEY

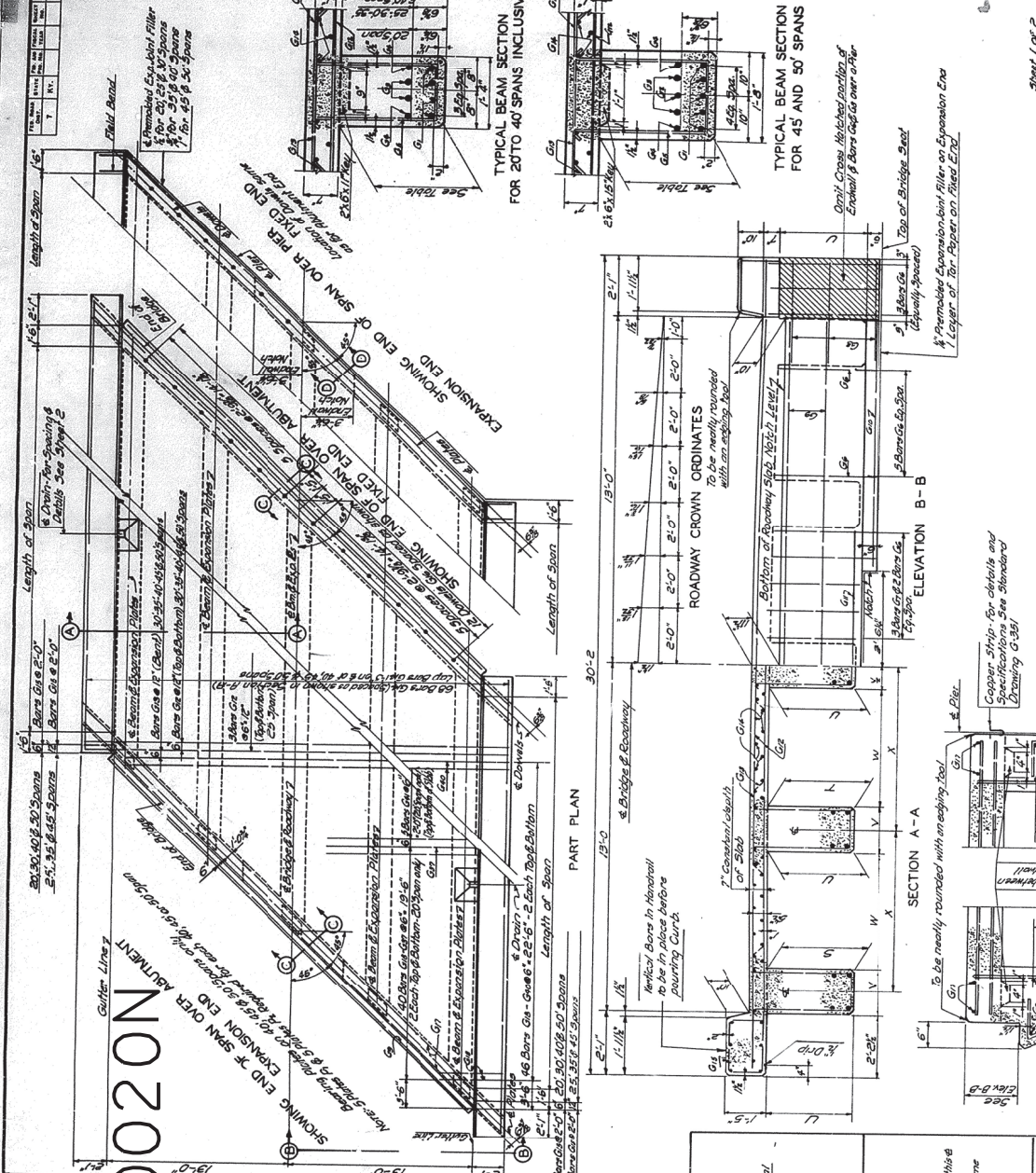
LIBERTY - RUSSELL SPRINGS
 ROAD
 PROJECT NO. 5142(41)
 BRIDGE NUMBER

STATION 332+27
 FROM STA. 329+181
 FOR 40' SPAN, 60' R.O.W.

Sheet 1 of 4

DATE	BY	REVISION

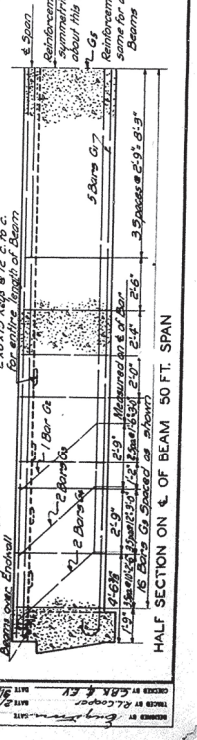
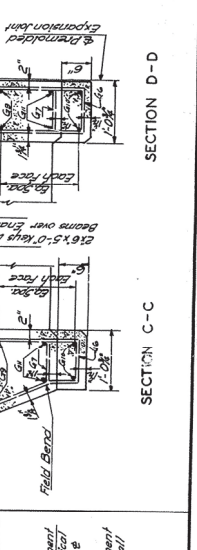
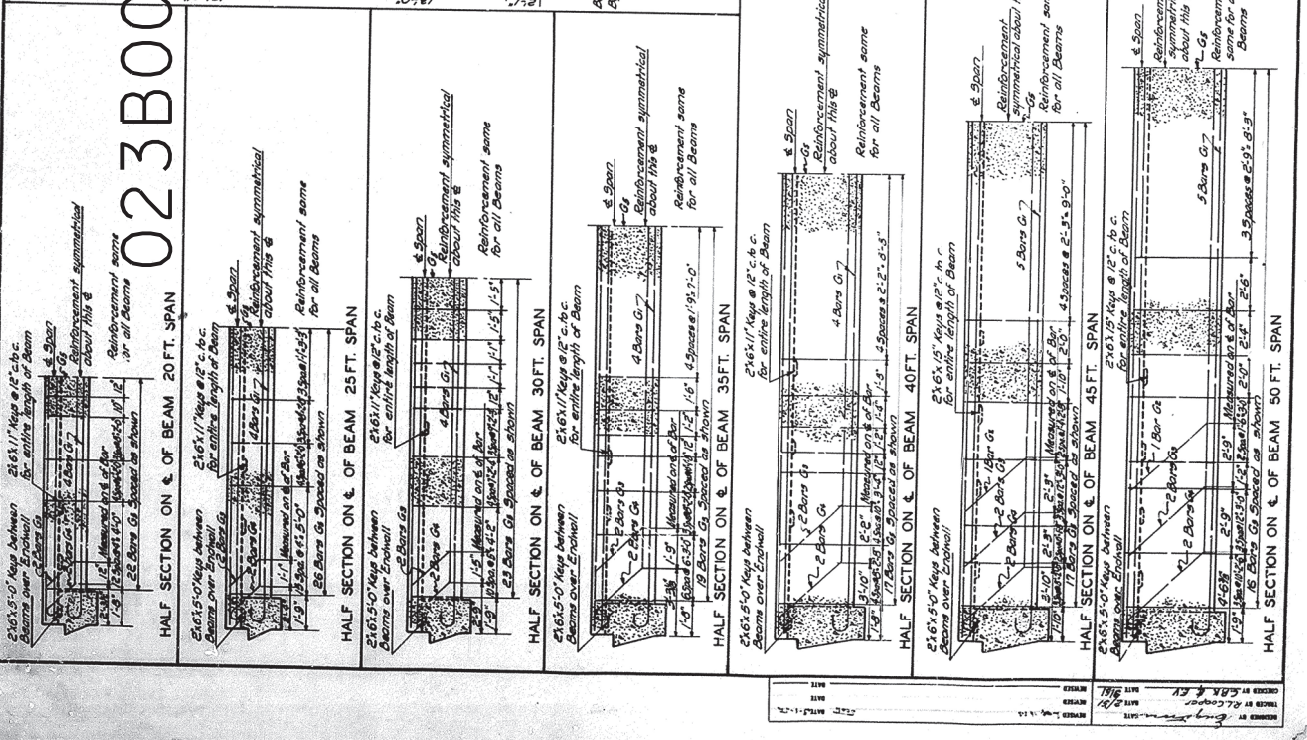
DESIGNED BY: M. E. Fitch
 CHECKED BY: M. E. Fitch
 DATE: 7/16/56



COMMONWEALTH OF KENTUCKY
 DEPARTMENT OF HIGHWAYS
STANDARD CONCRETE BRIDGE
DECK GIRDERS
45° SKEW
26 FT. ROADWAY
SPANS 20' TO 50'

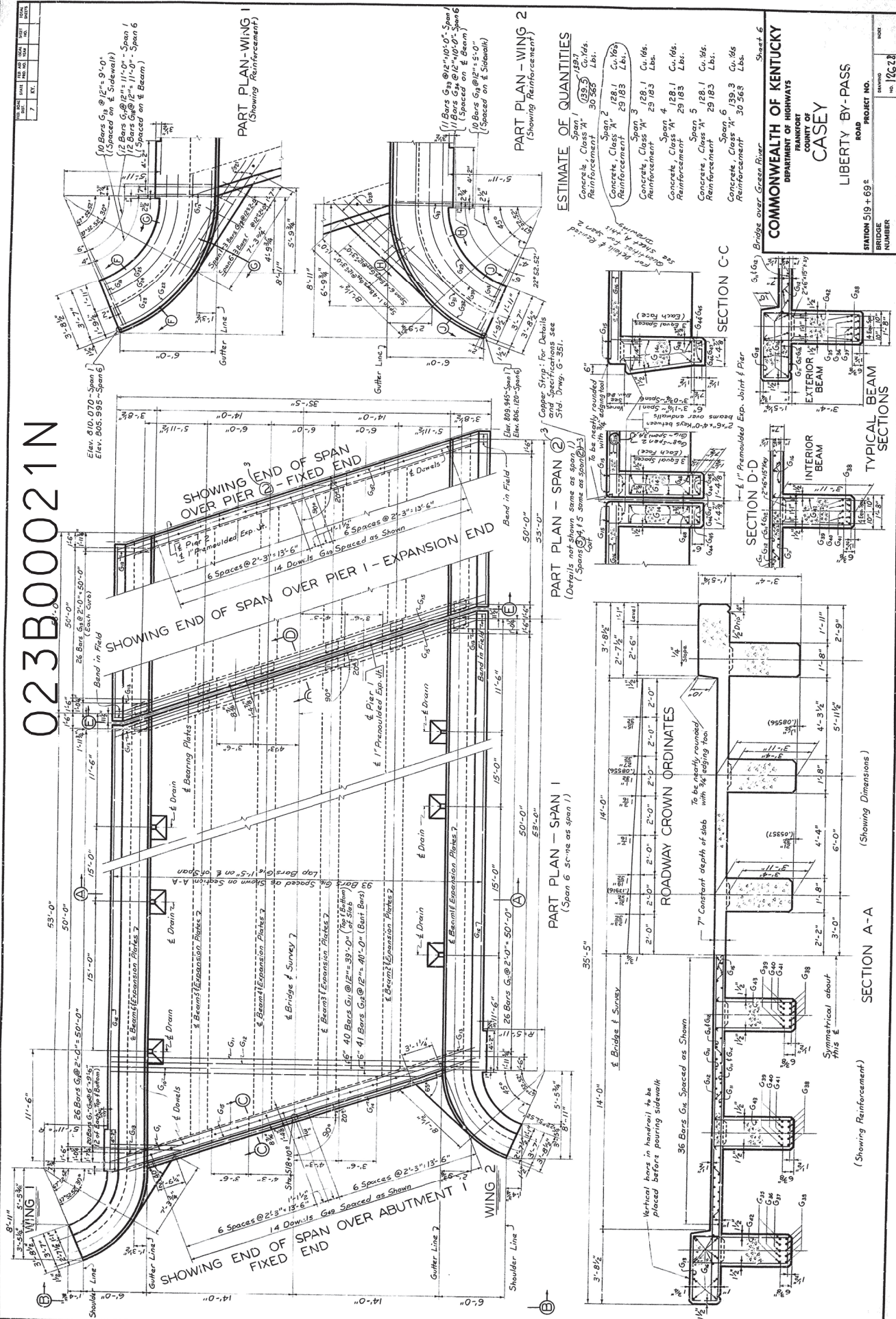
TABLE OF DIMENSIONS

SPAN	25 FT.	30 FT.	35 FT.	40 FT.	48 FT.	50 FT.
FT. IN.	7	10	13	16	20	22
FT. IN.	7	10	13	16	20	22
FT. IN.	7	10	13	16	20	22
FT. IN.	7	10	13	16	20	22
FT. IN.	7	10	13	16	20	22
FT. IN.	7	10	13	16	20	22
FT. IN.	7	10	13	16	20	22
FT. IN.	7	10	13	16	20	22
FT. IN.	7	10	13	16	20	22
FT. IN.	7	10	13	16	20	22



Sheet 1 of 2
 REINFORCING BARS
 1. 1/2" Dia. 10 Bars
 2. 1/2" Dia. 10 Bars
 3. 1/2" Dia. 10 Bars
 4. 1/2" Dia. 10 Bars
 5. 1/2" Dia. 10 Bars
 6. 1/2" Dia. 10 Bars
 7. 1/2" Dia. 10 Bars
 8. 1/2" Dia. 10 Bars
 9. 1/2" Dia. 10 Bars
 10. 1/2" Dia. 10 Bars
 11. 1/2" Dia. 10 Bars
 12. 1/2" Dia. 10 Bars
 13. 1/2" Dia. 10 Bars
 14. 1/2" Dia. 10 Bars
 15. 1/2" Dia. 10 Bars
 16. 1/2" Dia. 10 Bars
 17. 1/2" Dia. 10 Bars
 18. 1/2" Dia. 10 Bars
 19. 1/2" Dia. 10 Bars
 20. 1/2" Dia. 10 Bars
 21. 1/2" Dia. 10 Bars
 22. 1/2" Dia. 10 Bars
 23. 1/2" Dia. 10 Bars
 24. 1/2" Dia. 10 Bars
 25. 1/2" Dia. 10 Bars
 26. 1/2" Dia. 10 Bars
 27. 1/2" Dia. 10 Bars
 28. 1/2" Dia. 10 Bars
 29. 1/2" Dia. 10 Bars
 30. 1/2" Dia. 10 Bars
 31. 1/2" Dia. 10 Bars
 32. 1/2" Dia. 10 Bars
 33. 1/2" Dia. 10 Bars
 34. 1/2" Dia. 10 Bars
 35. 1/2" Dia. 10 Bars
 36. 1/2" Dia. 10 Bars
 37. 1/2" Dia. 10 Bars
 38. 1/2" Dia. 10 Bars
 39. 1/2" Dia. 10 Bars
 40. 1/2" Dia. 10 Bars
 41. 1/2" Dia. 10 Bars
 42. 1/2" Dia. 10 Bars
 43. 1/2" Dia. 10 Bars
 44. 1/2" Dia. 10 Bars
 45. 1/2" Dia. 10 Bars
 46. 1/2" Dia. 10 Bars
 47. 1/2" Dia. 10 Bars
 48. 1/2" Dia. 10 Bars
 49. 1/2" Dia. 10 Bars
 50. 1/2" Dia. 10 Bars
 51. 1/2" Dia. 10 Bars
 52. 1/2" Dia. 10 Bars
 53. 1/2" Dia. 10 Bars
 54. 1/2" Dia. 10 Bars
 55. 1/2" Dia. 10 Bars
 56. 1/2" Dia. 10 Bars
 57. 1/2" Dia. 10 Bars
 58. 1/2" Dia. 10 Bars
 59. 1/2" Dia. 10 Bars
 60. 1/2" Dia. 10 Bars
 61. 1/2" Dia. 10 Bars
 62. 1/2" Dia. 10 Bars
 63. 1/2" Dia. 10 Bars
 64. 1/2" Dia. 10 Bars
 65. 1/2" Dia. 10 Bars
 66. 1/2" Dia. 10 Bars
 67. 1/2" Dia. 10 Bars
 68. 1/2" Dia. 10 Bars
 69. 1/2" Dia. 10 Bars
 70. 1/2" Dia. 10 Bars
 71. 1/2" Dia. 10 Bars
 72. 1/2" Dia. 10 Bars
 73. 1/2" Dia. 10 Bars
 74. 1/2" Dia. 10 Bars
 75. 1/2" Dia. 10 Bars
 76. 1/2" Dia. 10 Bars
 77. 1/2" Dia. 10 Bars
 78. 1/2" Dia. 10 Bars
 79. 1/2" Dia. 10 Bars
 80. 1/2" Dia. 10 Bars
 81. 1/2" Dia. 10 Bars
 82. 1/2" Dia. 10 Bars
 83. 1/2" Dia. 10 Bars
 84. 1/2" Dia. 10 Bars
 85. 1/2" Dia. 10 Bars
 86. 1/2" Dia. 10 Bars
 87. 1/2" Dia. 10 Bars
 88. 1/2" Dia. 10 Bars
 89. 1/2" Dia. 10 Bars
 90. 1/2" Dia. 10 Bars
 91. 1/2" Dia. 10 Bars
 92. 1/2" Dia. 10 Bars
 93. 1/2" Dia. 10 Bars
 94. 1/2" Dia. 10 Bars
 95. 1/2" Dia. 10 Bars
 96. 1/2" Dia. 10 Bars
 97. 1/2" Dia. 10 Bars
 98. 1/2" Dia. 10 Bars
 99. 1/2" Dia. 10 Bars
 100. 1/2" Dia. 10 Bars

023B00021N



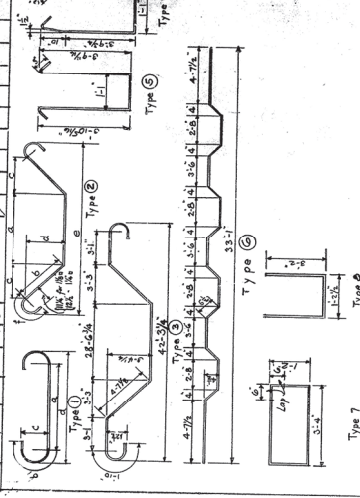
COMMONWEALTH OF KENTUCKY
 DEPARTMENT OF HIGHWAYS
 COUNTY OF
CASEY
 LIBERTY BY-PASS
 ROAD
 PROJECT NO. 192901
 BRIDGE NUMBER 121GR19M042-FE02
 SHEET 31 OF 56

DESIGNED BY	DATE	CHECKED BY	DATE
ENGINEER	DATE	ENGINEER	DATE
APPROVED BY	DATE	APPROVED BY	DATE

121GR19M042-FE07

BILL OF REINFORCEMENT

Mark	Type	Quantity	Location
G1	1	40	10' Span
G2	2	10	10' Span
G3	3	10	10' Span
G4	4	10	10' Span
G5	5	10	10' Span
G6	6	10	10' Span
G7	7	10	10' Span
G8	8	10	10' Span
G9	9	10	10' Span
G10	10	10	10' Span
G11	11	10	10' Span
G12	12	10	10' Span
G13	13	10	10' Span
G14	14	10	10' Span
G15	15	10	10' Span
G16	16	10	10' Span
G17	17	10	10' Span
G18	18	10	10' Span
G19	19	10	10' Span
G20	20	10	10' Span
G21	21	10	10' Span
G22	22	10	10' Span



ESTIMATE OF QUANTITIES

Concrete Class 'A' Reinforcement **918 cu.yd.**
 19480 lbs

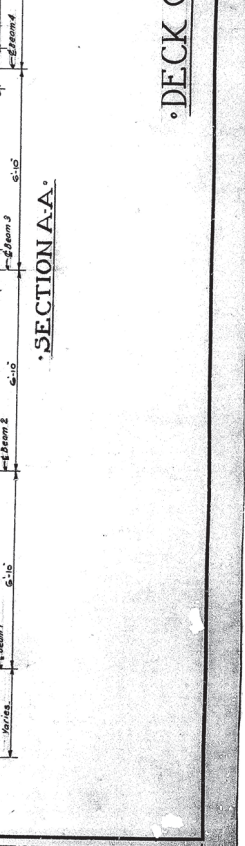
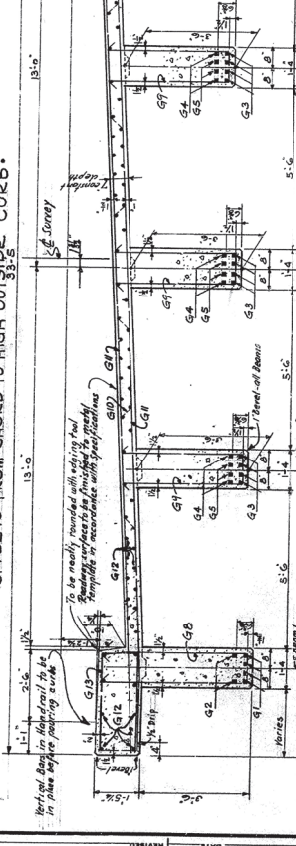
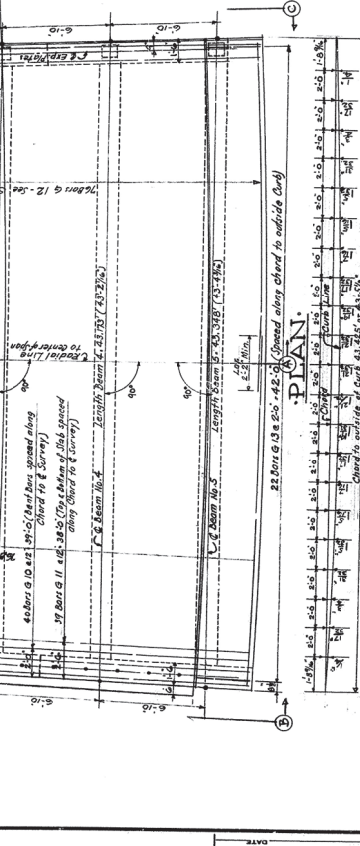
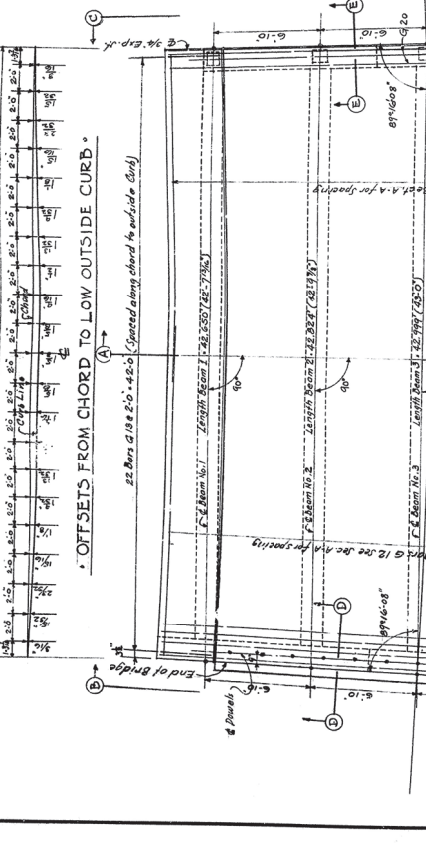
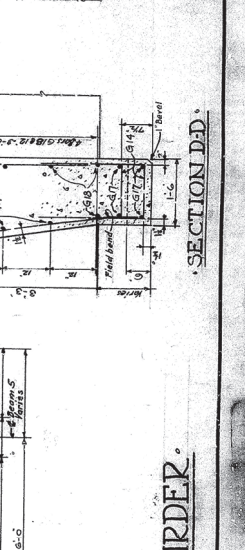
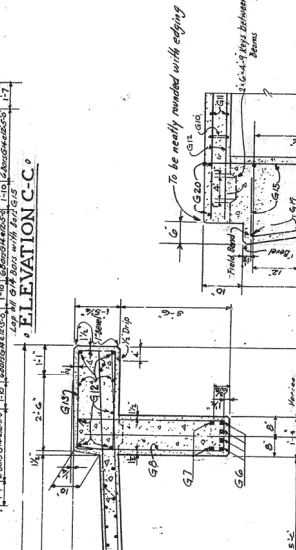
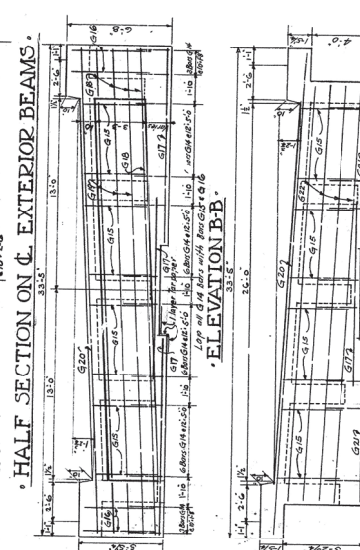
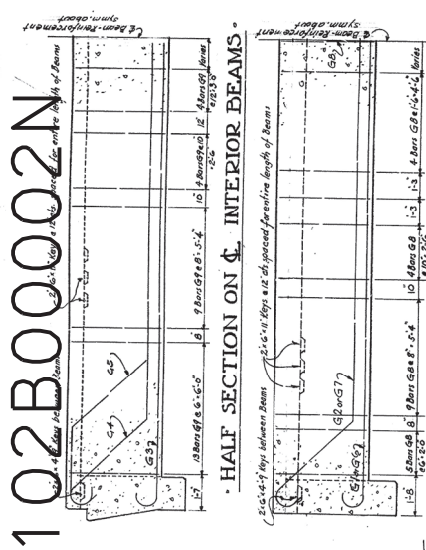
Concrete Class 'A' Intermediate Span Reinforcement **89 cu.yd.**
 19360 lbs.

COMMONWEALTH OF KENTUCKY
 DEPARTMENT OF HIGHWAYS
 COUNTY OF FRANKFORT

ROCKCASTLE
 MT. VERNON - SHEPA

BRIDGE OVER Roundstone Creek
 PROJECT NO. ROAD
 STATION 3+01.33
 BRIDGE NUMBER

DESIGNED BY
 CHECKED BY
 DATE 3/73



DESIGNED BY
 CHECKED BY
 DATE 3/73

REVIEWED
 DATE 3/73

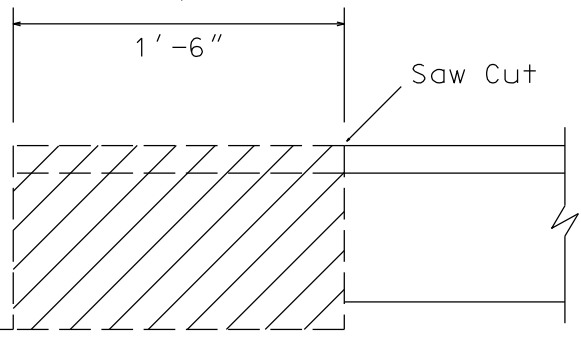
DATE 3/73

• DECK GIRDER •

023B00016N
023B00020N
023B00021N
029B00019N
100B00018N
102B00002N

ARMORED EDGE DETAIL

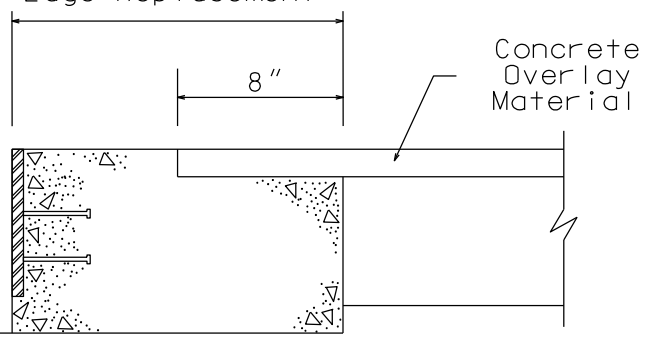
Remove X-Hatched Areas of
Concrete & Expansion Device



EXISTING SECTION

Pay Limits for "Armored
Edge Replacement"

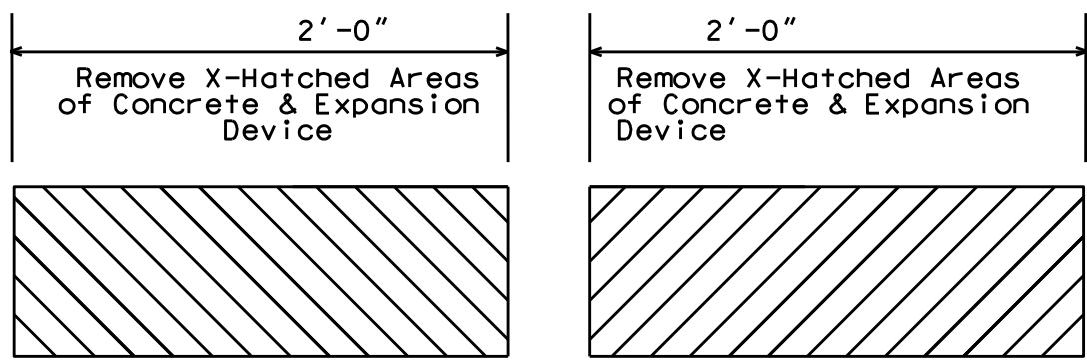
See Standard
Drawing
BJE-001



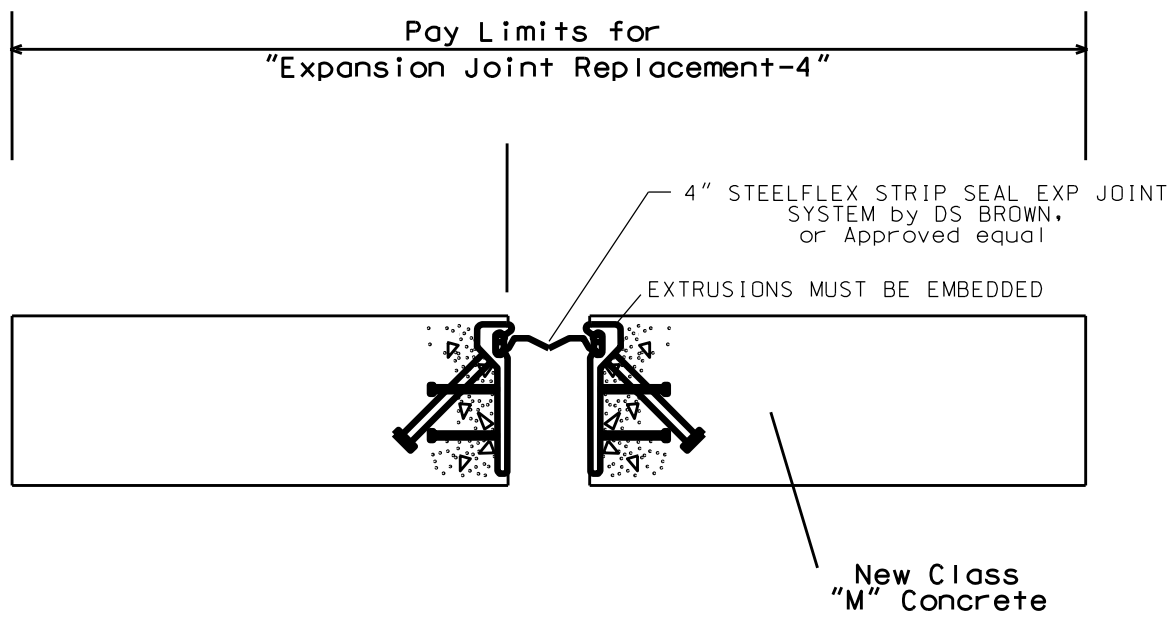
PROPOSED SECTION

023B00016N
023B00020N
023B00021N
100B00018N

EXPANSION DAM DETAIL



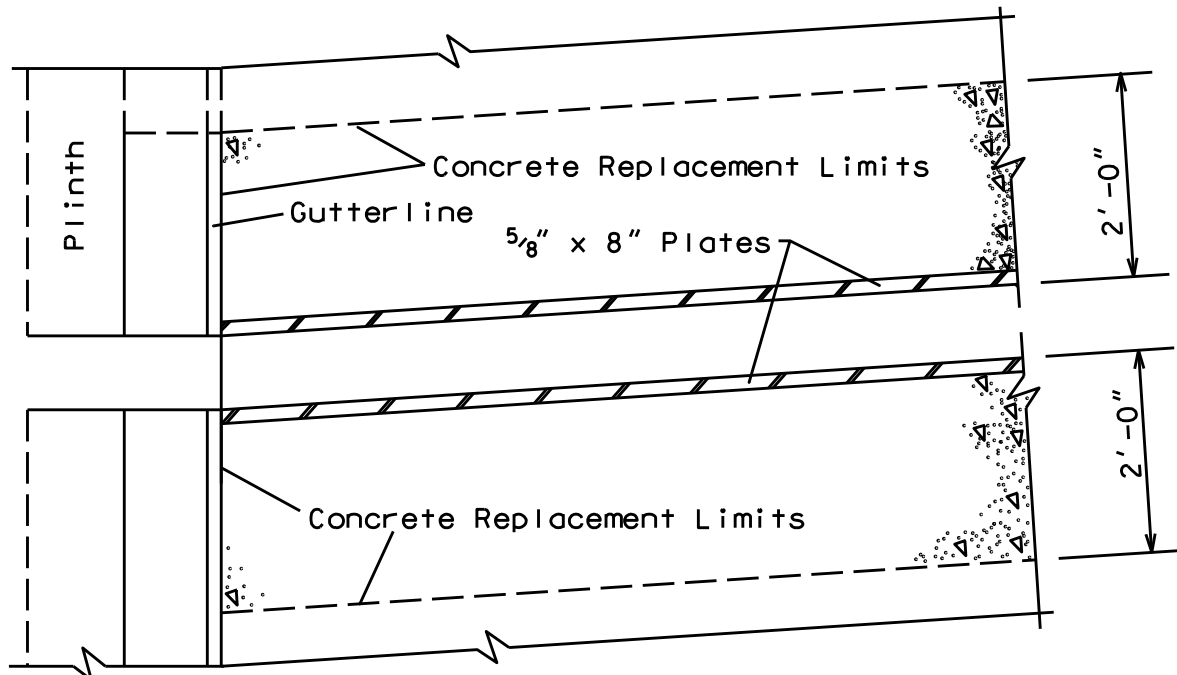
EXISTING SECTION



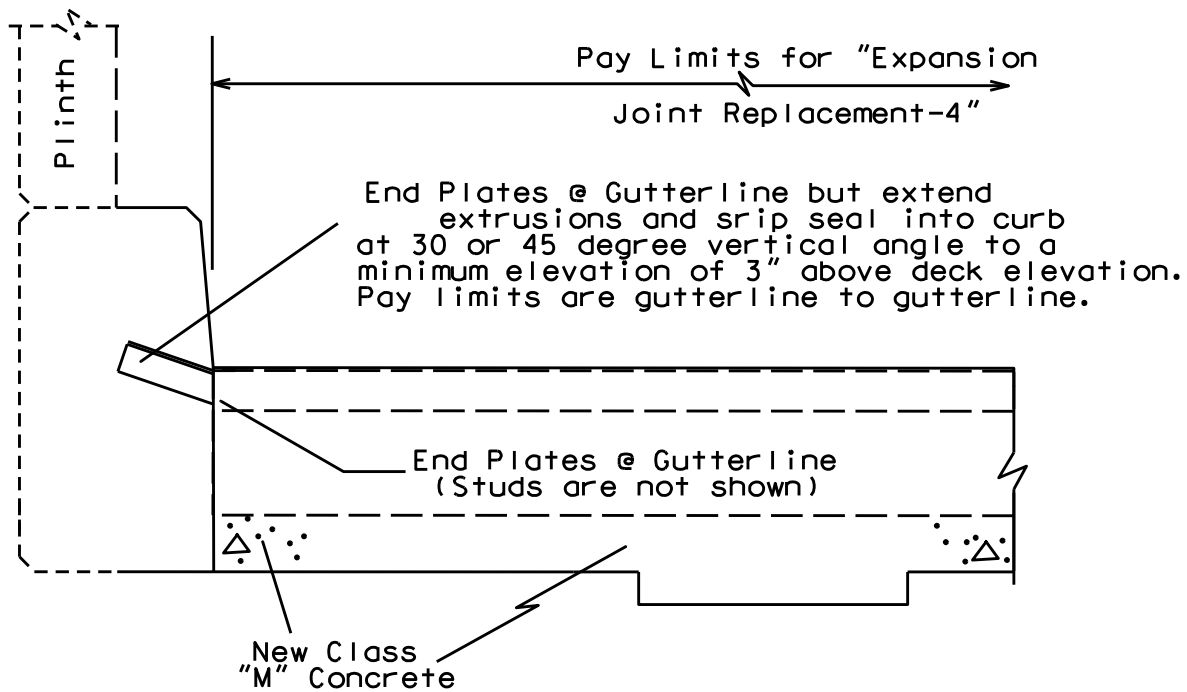
PROPOSED SECTION

023B00016N
023B00020N
023B00021N
100B00018N

CURB SECTION



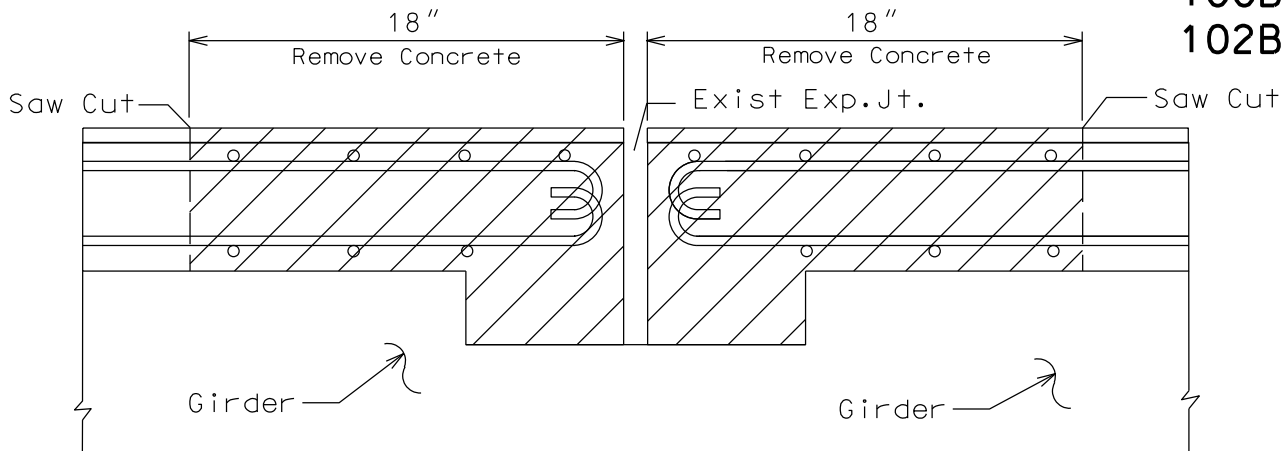
PLAN VIEW @ CURB



PROPOSED SECTION @ CURB

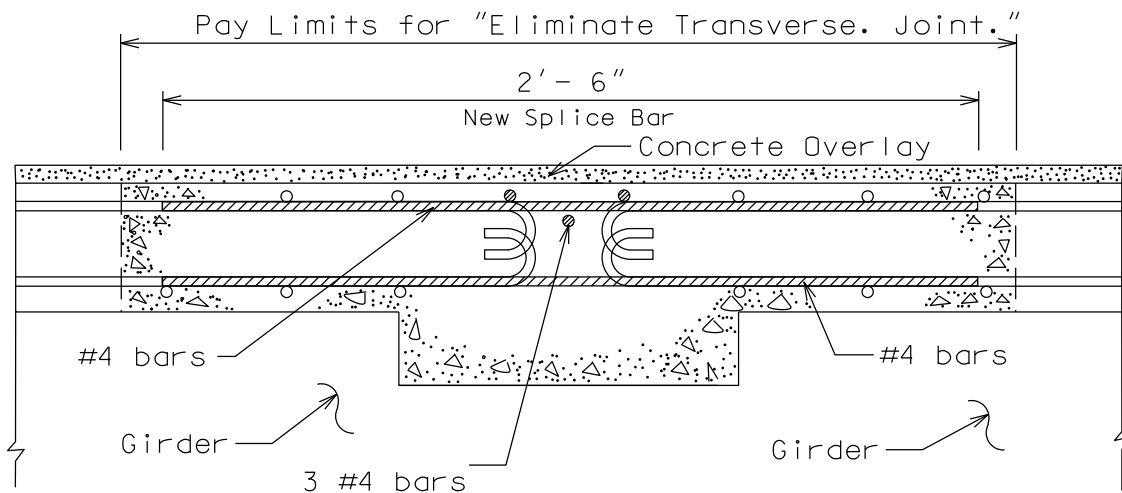
023B00016N
023B00020N
023B00021N
029B00019N
100B00018N
102B00002N

ELIMINATE TRANSVERSE JOINT DETAIL



NOTE: Do not disturb existing Steel Reinforcement

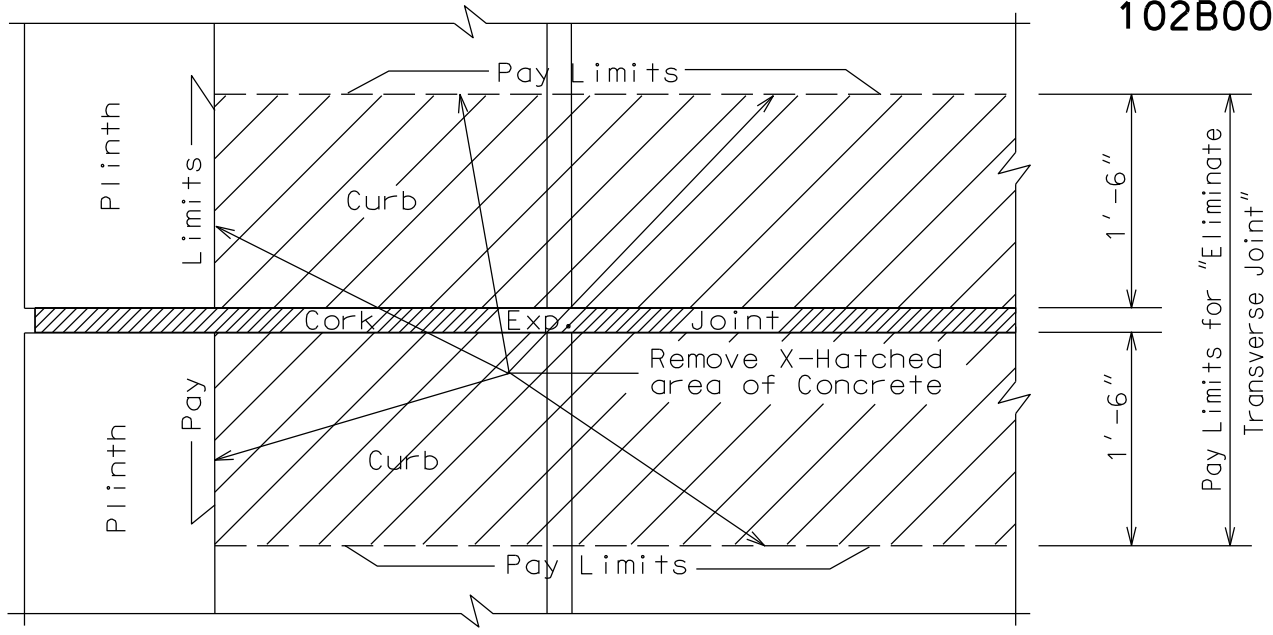
EXISTING SECTION @ Transverse Joint



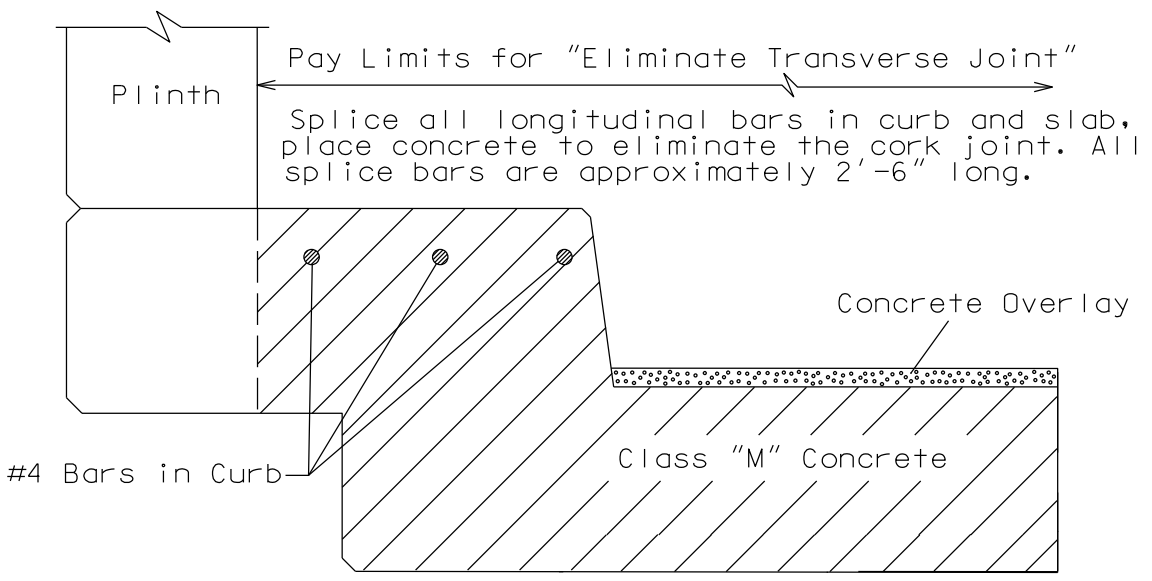
PROPOSED SECTION @ Transverse Joint

023B00016N
023B00020N
023B00021N
029B00019N
100B00018N
102B00002N

ELIMINATE TRANSVERSE JOINT DETAIL

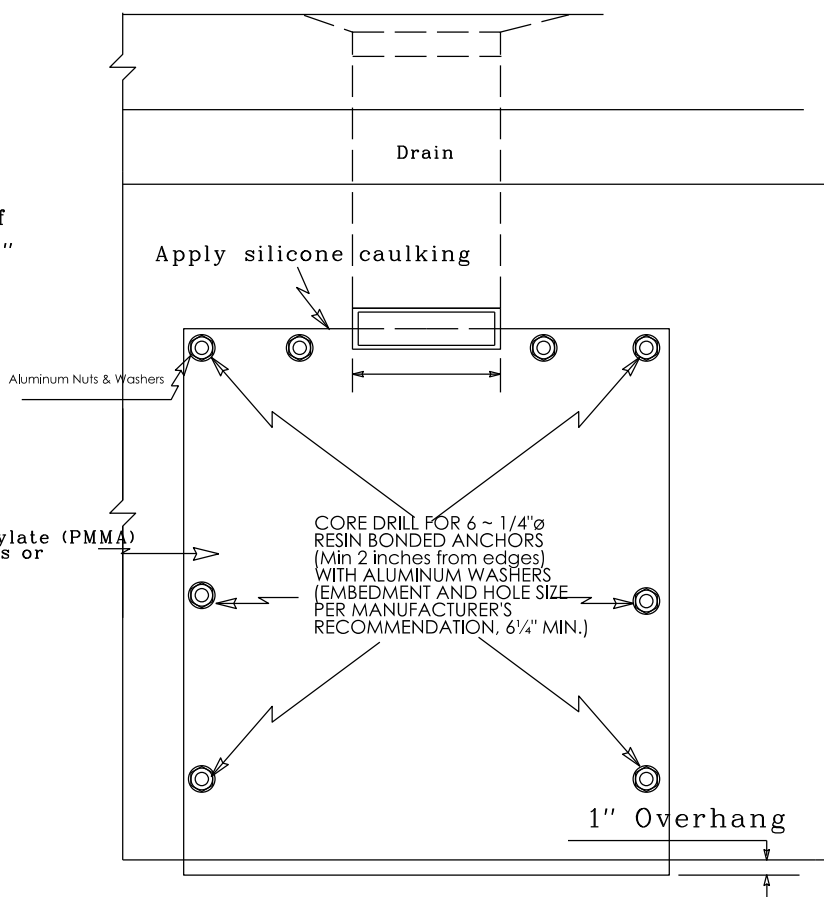
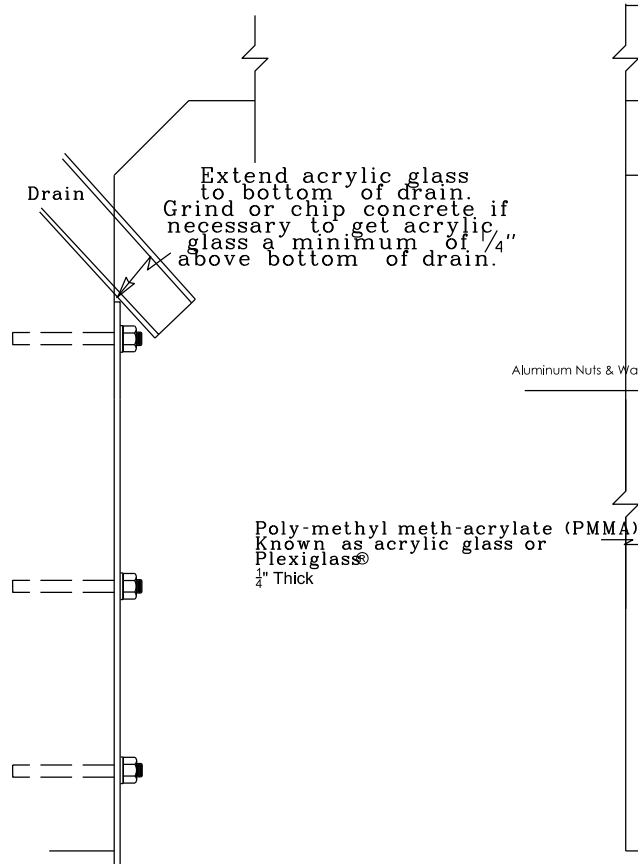


EXISTING PLAN VIEW @ CURB



PROPOSED SECTION @ CURB

ACRYLIC GLASS DETAIL



SECTION
 NOT TO SCALE

PLAN
 NOT TO SCALE

023B00016N	24 drains, 24"x 36" pieces = 144 sqft
023B00020N	20 drains, 20"x 40" pieces = 111.11sqft
029B00019N	12 drains, 15"x 30" pieces = 37.5 sqft

PART II

SPECIFICATIONS AND STANDARD DRAWINGS

SPECIFICATIONS REFERENCE

Any reference in the plans or proposal to previous editions of the *Standard Specifications for Road and Bridge Construction* and *Standard Drawings* are superseded by *Standard Specifications for Road and Bridge Construction, Edition of 2012* and *Standard Drawings, Edition of 2016*.

SUPPLEMENTAL SPECIFICATIONS

The contractor shall use the Supplemental Specifications that are effective at the time of letting.
The Supplemental Specifications can be found at the following link:

<http://transportation.ky.gov/Construction/Pages/Kentucky-Standard-Specifications.aspx>

STANDARD DRAWINGS THAT APPLY

TRAFFIC ~ *TEMPORARY* ~ TRAFFIC CONTROL

LANE CLOSURE USING TRAFFIC SIGNALS TTC-110

DEVICES

POST SPLICING DETAIL TTD-110

BRIDGES

MISCELLANEOUS STANDARDS

BRIDGE RESTORATION AND WATERPROOFING
WITH CONCRETE OVERLAYS BGX-009-04

JOINTS

NEOPRENE EXPANSION DAMS AND ARMORED EDGES BJE-001-11

PART III

EMPLOYMENT, WAGE AND RECORD REQUIREMENTS

**TRANSPORTATION CABINET
DEPARTMENT OF HIGHWAYS**

**LABOR AND WAGE REQUIREMENTS
APPLICABLE TO OTHER THAN FEDERAL-AID SYSTEM PROJECTS**

- I. Application
- II. Nondiscrimination of Employees (KRS 344)

I. APPLICATION

1. These contract provisions shall apply to all work performed on the contract by the contractor with his own organization and with the assistance of workmen under his immediate superintendence and to all work performed on the contract by piecework, station work or by subcontract. The contractor's organization shall be construed to include only workmen employed and paid directly by the contractor and equipment owned or rented by him, with or without operators.

2. The contractor shall insert in each of his subcontracts all of the stipulations contained in these Required Provisions and such other stipulations as may be required.

3. A breach of any of the stipulations contained in these Required Provisions may be grounds for termination of the contract.

3. If the contractor is in control of apprenticeship or other training or retraining, including on-the-job training programs, he shall not discriminate against an individual because of his race, color, religion, national origin, sex, disability or age forty (40) and over, in admission to, or employment in any program established to provide apprenticeship or other training.

4. The contractor will send to each labor union or representative of workers with which he has a collective bargaining agreement or other contract or understanding, a notice to be provided advising the said labor union or workers' representative of the contractor's commitments under this section, and shall post copies of the notice in conspicuous places available to employees and applicants for employment. The contractor will take such action with respect to any subcontract or purchase order as the administrating agency may direct as a means of enforcing such provisions, including sanctions for non-compliance.

Revised: January 25, 2017

II. NONDISCRIMINATION OF EMPLOYEES

**AN ACT OF THE KENTUCKY
GENERAL ASSEMBLY TO PREVENT
DISCRIMINATION IN EMPLOYMENT
KRS CHAPTER 344
EFFECTIVE JUNE 16, 1972**

The contract on this project, in accordance with KRS Chapter 344, provides that during the performance of this contract, the contractor agrees as follows:

1. The contractor shall not fail or refuse to hire, or shall not discharge any individual, or otherwise discriminate against an individual with respect to his compensation, terms, conditions, or privileges of employment, because of such individual's race, color, religion, national origin, sex, disability or age (forty and above); or limit, segregate, or classify his employees in any way which would deprive or tend to deprive an individual of employment opportunities or otherwise adversely affect his status as an employee, because of such individual's race, color, religion, national origin, sex, disability or age forty (40) and over. The contractor agrees to post in conspicuous places, available to employees and applicants for employment, notices to be provided setting forth the provisions of this nondiscrimination clause.

2. The contractor shall not print or publish or cause to be printed or published a notice or advertisement relating to employment by such an employer or membership in or any classification or referral for employment by the employment agency, indicating any preference, limitation, specification, or discrimination, based on race, color, religion, national origin, sex, or age forty (40) and over, or because the person is a qualified individual with a disability, except that such a notice or advertisement may indicate a preference, limitation, or specification based on religion, national origin, sex, or age forty (40) and over, or because the person is a qualified individual with a disability, when religion, national origin, sex, or age forty (40) and over, or because the person is a qualified individual with a disability, is a bona fide occupational qualification for employment.

EXECUTIVE BRANCH CODE OF ETHICS

In the 1992 regular legislative session, the General Assembly passed and Governor Brereton Jones signed Senate Bill 63 (codified as KRS 11A), the Executive Branch Code of Ethics, which states, in part:

KRS 11A.040 (7) provides:

No present or former public servant shall, within six (6) months following termination of his office or employment, accept employment, compensation, or other economic benefit from any person or business that contracts or does business with, or is regulated by, the state in matters in which he was directly involved during the last thirty-six (36) months of his tenure. This provision shall not prohibit an individual from returning to the same business, firm, occupation, or profession in which he was involved prior to taking office or beginning his term of employment, or for which he received, prior to his state employment, a professional degree or license, provided that, for a period of six (6) months, he personally refrains from working on any matter in which he was directly involved during the last thirty-six (36) months of his tenure in state government. This subsection shall not prohibit the performance of ministerial functions, including but not limited to filing tax returns, filing applications for permits or licenses, or filing incorporation papers, nor shall it prohibit the former officer or public servant from receiving public funds disbursed through entitlement programs.

KRS 11A.040 (9) states:

A former public servant shall not represent a person or business before a state agency in a matter in which the former public servant was directly involved during the last thirty-six (36) months of his tenure, for a period of one (1) year after the latter of:

- a) The date of leaving office or termination of employment; or
- b) The date the term of office expires to which the public servant was elected.

This law is intended to promote public confidence in the integrity of state government and to declare as public policy the idea that state employees should view their work as a public trust and not as a way to obtain private benefits.

If you have worked for the executive branch of state government within the past six months, you may be subject to the law's prohibitions. The law's applicability may be different if you hold elected office or are contemplating representation of another before a state agency.

Also, if you are affiliated with a firm which does business with the state and which employs former state executive-branch employees, you should be aware that the law may apply to them.

In case of doubt, the law permits you to request an advisory opinion from the Executive Branch Ethics Commission, 3 Fountain Place, Frankfort, Kentucky 40601; telephone (502) 564-7954.

Revised: January 27, 2017

Kentucky Equal Employment Opportunity Act of 1978

The requirements of the Kentucky Equal Employment Opportunity Act of 1978 (KRS 45.560-45.640) shall apply to this Contract. The apparent low Bidder will be required to submit EEO forms to the Division of Construction Procurement, which will then forward to the Finance and Administration Cabinet for review and approval. No award will become effective until all forms are submitted and EEO/CC has certified compliance. The required EEO forms are as follows:

- EEO-1: Employer Information Report
- Affidavit of Intent to Comply
- Employee Data Sheet
- Subcontractor Report

These forms are available on the Finance and Administration's web page under ***Vendor Information, Standard Attachments and General Terms*** at the following address:
<https://www.eProcurement.ky.gov>.

Bidders currently certified as being in compliance by the Finance and Administration Cabinet may submit a copy of their approval letter in lieu of the referenced EEO forms.

For questions or assistance please contact the Finance and Administration Cabinet by email at **finance.contractcompliance@ky.gov** or by phone at 502-564-2874.

EMPLOYEE RIGHTS UNDER THE FAIR LABOR STANDARDS ACT

THE UNITED STATES DEPARTMENT OF LABOR WAGE AND HOUR DIVISION

FEDERAL MINIMUM WAGE

\$7.25

 PER HOUR

BEGINNING JULY 24, 2009

OVERTIME PAY At least 1½ times your regular rate of pay for all hours worked over 40 in a workweek.

CHILD LABOR An employee must be at least **16** years old to work in most non-farm jobs and at least **18** to work in non-farm jobs declared hazardous by the Secretary of Labor.

Youths **14** and **15** years old may work outside school hours in various non-manufacturing, non-mining, non-hazardous jobs under the following conditions:

No more than

- **3** hours on a school day or **18** hours in a school week;
- **8** hours on a non-school day or **40** hours in a non-school week.

Also, work may not begin before **7 a.m.** or end after **7 p.m.**, except from June 1 through Labor Day, when evening hours are extended to **9 p.m.** Different rules apply in agricultural employment.

TIP CREDIT Employers of “tipped employees” must pay a cash wage of at least \$2.13 per hour if they claim a tip credit against their minimum wage obligation. If an employee’s tips combined with the employer’s cash wage of at least \$2.13 per hour do not equal the minimum hourly wage, the employer must make up the difference. Certain other conditions must also be met.

ENFORCEMENT The Department of Labor may recover back wages either administratively or through court action, for the employees that have been underpaid in violation of the law. Violations may result in civil or criminal action.

Employers may be assessed civil money penalties of up to \$1,100 for each willful or repeated violation of the minimum wage or overtime pay provisions of the law and up to \$11,000 for each employee who is the subject of a violation of the Act’s child labor provisions. In addition, a civil money penalty of up to \$50,000 may be assessed for each child labor violation that causes the death or serious injury of any minor employee, and such assessments may be doubled, up to \$100,000, when the violations are determined to be willful or repeated. The law also prohibits discriminating against or discharging workers who file a complaint or participate in any proceeding under the Act.

ADDITIONAL INFORMATION

- Certain occupations and establishments are exempt from the minimum wage and/or overtime pay provisions.
- Special provisions apply to workers in American Samoa and the Commonwealth of the Northern Mariana Islands.
- Some state laws provide greater employee protections; employers must comply with both.
- The law requires employers to display this poster where employees can readily see it.
- Employees under 20 years of age may be paid \$4.25 per hour during their first 90 consecutive calendar days of employment with an employer.
- Certain full-time students, student learners, apprentices, and workers with disabilities may be paid less than the minimum wage under special certificates issued by the Department of Labor.

For additional information:



1-866-4-USWAGE

(1-866-487-9243)

TTY: 1-877-889-5627



WWW.WAGEHOUR.DOL.GOV

PART IV
INSURANCE

INSURANCE

The Contractor shall procure and maintain the following insurance in addition to the insurance required by law:

- 1) Commercial General Liability-Occurrence form – not less than \$2,000,000 General aggregate, \$2,000,000 Products & Completed Aggregate, \$1,000,000 Personal & Advertising, \$1,000,000 each occurrence.
- 2) Automobile Liability- \$1,000,000 per accident
- 3) Employers Liability:
 - a) \$100,000 Each Accident Bodily Injury
 - b) \$500,000 Policy limit Bodily Injury by Disease
 - c) \$100,000 Each Employee Bodily Injury by Disease
- 4) The insurance required above must be evidenced by a Certificate of Insurance and this Certificate of Insurance must contain one of the following statements:
 - a) "policy contains no deductible clauses."
 - b) "policy contains _____ (amount) deductible property damage clause but company will pay claim and collect the deductible from the insured."
- 5) KENTUCKY WORKMEN'S COMPENSATION INSURANCE. The contractor shall furnish evidence of coverage of all his employees or give evidence of self-insurance by submitting a copy of a certificate issued by the Workmen's Compensation Board.

The cost of insurance is incidental to all contract items. All subcontractors must meet the same minimum insurance requirements.

PART V
BID ITEMS

PROPOSAL BID ITEMS

192905

Page 1 of 1

Report Date 3/27/19

Section: 0001 - BRIDGE

LINE	BID CODE	ALT	DESCRIPTION	QUANTITY	UNIT	UNIT PRIC	FP	AMOUNT
0010	02562		TEMPORARY SIGNS	894.00	SQFT		\$	
0020	02650		MAINTAIN & CONTROL TRAFFIC APPLIES TO 023B00016N	1.00	LS		\$	
0030	02650		MAINTAIN & CONTROL TRAFFIC APPLIES TO 023B00020N	1.00	LS		\$	
0040	02650		MAINTAIN & CONTROL TRAFFIC APPLIES TO 023B00021N	1.00	LS		\$	
0050	02650		MAINTAIN & CONTROL TRAFFIC APPLIES TO 029B00019N	1.00	LS		\$	
0060	02650		MAINTAIN & CONTROL TRAFFIC APPLIES TO 100B00018N	1.00	LS		\$	
0070	02650		MAINTAIN & CONTROL TRAFFIC APPLIES TO 102B00002N	1.00	LS		\$	
0080	02653		LANE CLOSURE	12.00	EACH		\$	
0090	03298		EXPAN JOINT REPLACE 4 IN	81.80	LF		\$	
0100	03299		ARMORED EDGE FOR CONCRETE	337.10	LF		\$	
0110	03300		ELIMINATE TRANSVERSE JOINT	619.00	LF		\$	
0120	03304		BRIDGE OVERLAY APPROACH PAVEMENT	1,689.00	SQYD		\$	
0130	04933		TEMP SIGNAL 2 PHASE	5.00	EACH		\$	
0140	04934		TEMP SIGNAL MULTI PHASE	1.00	EACH		\$	
0150	06514		PAVE STRIPING-PERM PAINT-4 IN	7,333.00	LF		\$	
0160	06549		PAVE STRIPING-TEMP REM TAPE-B	3,000.00	LF		\$	
0170	06550		PAVE STRIPING-TEMP REM TAPE-W	6,000.00	LF		\$	
0180	06551		PAVE STRIPING-TEMP REM TAPE-Y	12,000.00	LF		\$	
0190	08150		STEEL REINFORCEMENT	9,312.20	LB		\$	
0200	08504		EPOXY SAND SLURRY	1,249.70	SQYD		\$	
0210	08510		REM EPOXY BIT FOREIGN OVERLAY	4,261.00	SQYD		\$	
0220	08526		CONC CLASS M FULL DEPTH PATCH	35.00	CUYD		\$	
0230	08534		CONCRETE OVERLAY-LATEX	177.60	CUYD		\$	
0240	08549		BLAST CLEANING	5,511.00	SQYD		\$	
0250	22146EN		CONCRETE PATCHING REPAIR	140.00	SQFT		\$	
0260	23879EC		ACRYLIC GLASS	292.61	SQFT		\$	
0270	24094EC		PARTIAL DEPTH PATCHING	118.40	CUYD		\$	

Section: 0002 - DEMOBILIZATION

LINE	BID CODE	ALT	DESCRIPTION	QUANTITY	UNIT	UNIT PRIC	FP	AMOUNT
0280	02569		DEMOBILIZATION	1.00	LS		\$	