



**CALL NO. 404**

**CONTRACT ID. 192962**

**TRIGG COUNTY**

**FED/STATE PROJECT NUMBER 111GR19026 - FE02**

**DESCRIPTION VARIOUS BRIDGES IN TRIGG COUNTY**

**WORK TYPE BRIDGE DECK RESTORATION & WATERPROOFING**

**PRIMARY COMPLETION DATE 11/15/2019**

**LETTING DATE: March 22,2019**

Sealed Bids will be received electronically through the Bid Express bidding service until 10:00 AM EASTERN DAYLIGHT TIME March 22,2019. Bids will be publicly announced at 10:00 AM EASTERN DAYLIGHT TIME.

**NO PLANS ASSOCIATED WITH THIS PROJECT.**

**REQUIRED BID PROPOSAL GUARANTY:** Not less than 5% of the total bid.

## TABLE OF CONTENTS

PART I	SCOPE OF WORK
	<ul style="list-style-type: none"><li>• PROJECT(S), COMPLETION DATE(S), &amp; LIQUIDATED DAMAGES</li><li>• CONTRACT NOTES</li><li>• STATE CONTRACT NOTES</li><li>• SPECIAL NOTE(S) APPLICABLE TO PROJECT</li><li>• ASBESTOS ABATEMENT REPORT</li><li>• MATERIAL SUMMARY</li></ul>
PART II	SPECIFICATIONS AND STANDARD DRAWINGS
	<ul style="list-style-type: none"><li>• SPECIFICATIONS REFERENCE</li><li>• SUPPLEMENTAL SPECIFICATION</li><li>• STANDARD DRAWINGS THAT APPLY</li></ul>
PART III	EMPLOYMENT, WAGE AND RECORD REQUIREMENTS
	<ul style="list-style-type: none"><li>• LABOR AND WAGE REQUIREMENTS</li><li>• EXECUTIVE BRANCH CODE OF ETHICS</li><li>• KENTUCKY EQUAL EMPLOYMENT OPPORTUNITY ACT OF 1978 LOCALITY / STATE</li><li>• PROJECT WAGE RATES / STATE</li></ul>
PART IV	INSURANCE
PART V	BID ITEMS

**PART I**  
**SCOPE OF WORK**

## ADMINISTRATIVE DISTRICT - 01

**CONTRACT ID - 192962**

**111GR19026 - FE02**

**COUNTY - TRIGG**

**PCN - MB11101261901**

**FE02 111 0126 B00006N 01.17**

TRIGG COUNTY 111B00006N BUFFALO CERULEAN ROAD MP 01.17  
KY 126 OVER TRIBUTARY OF MUDDY CREEKBRIDGE DECK RESTORATION & WATERPROOFING  
GEOGRAPHIC COORDINATES LATITUDE 36:50:45.00 LONGITUDE 87:42:11.00

**PCN - MB11101641901**

**FE02 111 0164 B00041N 04.95**

TRIGG COUNTY 111B00041N LINTON ROAD MP 04.95  
KY 164 OVER DONALDSON CREEKBRIDGE DECK RESTORATION & WATERPROOFING  
GEOGRAPHIC COORDINATES LATITUDE 36:44:58.00 LONGITUDE 87:54:14.00

**PCN - MB11107781901**

**FE02 111 0778 B00055N 03.71**

TRIGG COUNTY 111B00055N WILL JACKSON ROAD MP 03.71  
KY 778 OVER LITTLE RIVERBRIDGE DECK RESTORATION & WATERPROOFING  
GEOGRAPHIC COORDINATES LATITUDE 36:54:17.00 LONGITUDE 87:51:51.00

### COMPLETION DATE(S):

COMPLETED BY 11/15/2019	APPLIES TO ENTIRE CONTRACT
30 CALENDAR Days	APPLIES TO 111B00006N
30 CALENDAR Days	APPLIES TO 111B00041N
30 CALENDAR Days	APPLIES TO 111B00055N

## **CONTRACT NOTES**

### **PROPOSAL ADDENDA**

All addenda to this proposal must be applied when calculating bid and certified in the bid packet submitted to the Kentucky Department of Highways. Failure to use the correct and most recent addenda may result in the bid being rejected.

### **BID SUBMITTAL**

Bidder must use the Department's electronic bidding software. The Bidder must download the bid file located on the Bid Express website ([www.bidx.com](http://www.bidx.com)) to prepare a bid packet for submission to the Department. The bidder must submit electronically using Bid Express.

### **JOINT VENTURE BIDDING**

Joint venture bidding is permissible. All companies in the joint venture must be prequalified in one of the work types in the Qualifications for Bidders for the project. The bidders must get a vendor ID for the joint venture from the Division of Construction Procurement and register the joint venture as a bidder on the project. Also, the joint venture must obtain a digital ID from Bid Express to submit a bid. A joint bid bond of 5% may be submitted for both companies or each company may submit a separate bond of 5%.

### **UNDERGROUND FACILITY DAMAGE PROTECTION**

The contractor shall make every effort to protect underground facilities from damage as prescribed in the Underground Facility Damage Protection Act of 1994, Kentucky Revised Statute KRS 367.4901 to 367.4917. It is the contractor's responsibility to determine and take steps necessary to be in compliance with federal and state damage prevention directives. When prescribed in said directives, the contractor shall submit Excavation Locate Requests to the Kentucky Contact Center (KY811) via web ticket entry. The submission of this request does not relieve the contractor from the responsibility of contacting non-member facility owners, whom shall be contacted through their individual Protection Notification Center. Non-compliance with these directives can result in the enforcement of penalties.

### **REGISTRATION WITH THE SECRETARY OF STATE BY A FOREIGN ENTITY**

Pursuant to KRS 176.085(1)(b), an agency, department, office, or political subdivision of the Commonwealth of Kentucky shall not award a state contract to a person that is a foreign entity required by [KRS 14A.9-010](#) to obtain a certificate of authority to transact business in the Commonwealth ("certificate") from the Secretary of State under [KRS 14A.9-030](#) unless the person produces the certificate within fourteen (14) days of the bid or proposal opening. If the foreign entity is not required to obtain a certificate as provided in [KRS 14A.9-010](#), the foreign entity should identify the applicable exception. Foreign entity is defined within [KRS 14A.1-070](#).

**For all foreign entities required to obtain a certificate of authority to transact business in the Commonwealth, if a copy of the certificate is not received by the contracting agency within the time frame identified above, the foreign entity's solicitation response shall be deemed non-responsive or the awarded contract shall be cancelled.**

Businesses can register with the Secretary of State at <https://secure.kentucky.gov/sos/ftbr/welcome.aspx>.

### **SPECIAL NOTE FOR PROJECT QUESTIONS DURING ADVERTISEMENT**

Questions about projects during the advertisement should be submitted in writing to the Division of Construction Procurement. This may be done by fax (502) 564-7299 or email to [kytc.projectquestions@ky.gov](mailto:kytc.projectquestions@ky.gov). The Department will attempt to answer all submitted questions. The Department reserves the right not to answer if the question is not pertinent or does not aid in clarifying the project intent.

The deadline for posting answers will be 3:00 pm Eastern Daylight Time, the day preceding the Letting. Questions may be submitted until this deadline with the understanding that the later a question is submitted, the less likely an answer will be able to be provided.

The questions and answers will be posted for each Letting under the heading "Questions & Answers" on the Construction Procurement website ([www.transportation.ky.gov/contract](http://www.transportation.ky.gov/contract)). The answers provided shall be considered part of this Special Note and, in case of a discrepancy, will govern over all other bidding documents.

### **HARDWOOD REMOVAL RESTRICTIONS**

The US Department of Agriculture has imposed a quarantine in Kentucky and several surrounding states, to prevent the spread of an invasive insect, the emerald ash borer. Hardwood cut in conjunction with the project may not be removed from the state. Chipping or burning on site is the preferred method of disposal.

### **INSTRUCTIONS FOR EXCESS MATERIAL SITES AND BORROW SITES**

Identification of excess material sites and borrow sites shall be the responsibility of the Contractor. The Contractor shall be responsible for compliance with all applicable state and federal laws and may wish to consult with the US Fish and Wildlife Service to seek protection under Section 10 of the Endangered Species Act for these activities.

### **ACCESS TO RECORDS**

The contractor, as defined in KRS 45A.030 (9) agrees that the contracting agency, the Finance and Administration Cabinet, the Auditor of Public Accounts, and the Legislative Research Commission, or their duly authorized representatives, shall have access to any books, documents, papers, records, or other evidence, which are directly pertinent to this contract for the purpose of financial audit or program review. Records and other prequalification information confidentially

disclosed as part of the bid process shall not be deemed as directly pertinent to the contract and shall be exempt from disclosure as provided in KRS 61.878(1)(c). The contractor also recognizes that any books, documents, papers, records, or other evidence, received during a financial audit or program review shall be subject to the Kentucky Open Records Act, KRS 61.870 to 61.884.

In the event of a dispute between the contractor and the contracting agency, Attorney General, or the Auditor of Public Accounts over documents that are eligible for production and review, the Finance and Administration Cabinet shall review the dispute and issue a determination, in accordance with Secretary's Order 11-004.

April 30, 2018

## **SPECIAL NOTE FOR RECIPROCAL PREFERENCE**

### **RECIPROCAL PREFERENCE TO BE GIVEN BY PUBLIC AGENCIES TO RESIDENT BIDDERS**

By reference, KRS 45A.490 to 45A.494 are incorporated herein and in compliance regarding the bidders residency. Bidders who want to claim resident bidder status should complete the Affidavit for Claiming Resident Bidder Status along with their bid in the electronic bidding software. Submittal of the Affidavit should be done along the bid in Bid Express.

April 30, 2018



**SPECIAL NOTES  
DISTRICT NO. 1  
BRIDGE DECK RESTORATION AND WATERPROOFING  
TRIGG COUNTY  
CID 192962 ~ 111GR19M026**

**FE02 111 0126 B00006N 01.17**

Trigg County ~ KY 126 (Buffalo Cerulean Road) over Tributary of Muddy Creek

***Geographic Coordinates***

Latitude – 36° 50' 45.00''

Longitude – 087° 42' 11.00''

**Description**

2~30' RCDG Spans, Drawing No. 06327

**FE02 111 0164 B00041N 04.95**

Trigg County ~ KY 164 (Linton Road) over Donaldson Creek

***Geographic Coordinates***

Latitude – 36° 44' 58.00''

Longitude – 087° 54' 14.00''

**Description**

3~50' RCDG Spans, Drawing No 14351

**FE02 111 0778 B00055N 03.71**

Trigg County ~ KY 778 (Will Jackson Road) over Little River

***Geographic Coordinates***

Latitude – 36° 54' 17.00''

Longitude – 087° 51' 51.00''

**Description**

70'-100'-70' RCDG Spans, Drawing No. 14440

**SPECIAL NOTES FOR BRIDGE DECK RESTORATION  
AND WATERPROOFING**

SPECIAL NOTE FOR BRIDGE RESTORATION AND WATERPROOFING WITH  
CONCRETE OVERLAYS

SPECIAL NOTE FOR REPLACING EXPANSION JOINTS AND/OR INSTALLING  
ARMORED EDGES FOR CONCRETE ON BRIDGES

SPECIAL NOTE FOR ELIMINATING TRANSVERSE JOINTS ON BRIDGES

SPECIAL NOTE FOR DECK DRAIN RETROFIT

SPECIAL NOTE FOR BRIDGE CLEANING AND PREVENTIVE MAINTENANCE

SPECIAL NOTE FOR CONTRACT COMPLETION DATE AND LIQUIDATED  
DAMAGES ON BRIDGE REPAIR CONTRACTS

SPECIAL NOTE FOR MAINTAINING AND CONTROLLING TRAFFIC

## **SPECIAL NOTE FOR BRIDGE RESTORATION AND WATERPROOFING WITH CONCRETE OVERLAYS**

- 1. DESCRIPTION.** Perform all work in accordance with the Kentucky Transportation Cabinet, Department of Highway's Standard Specifications for Road and Bridge Construction and applicable Supplemental Specifications, the Standard Drawings (current editions), this Note, and the attached detail drawings. Section references are to the Standard Specifications. This work consists of the following: (1) Furnish all labor, materials, tools, and equipment; (2) Machine prep the existing slab; (3) Complete full-depth and partial depth repairs as directed by the Engineer; (4) Repair/replace damaged and corroded reinforcing bars; (5) Place new concrete overlay and epoxy-sand slurry in accordance with Section 606; (6) Complete asphalt approach pavement; (7) Maintain and control traffic; and (8) Any other work specified as part of this contract. All construction will be in accordance with Section 606 unless otherwise specified.
- 2. MATERIALS.**

  - A. Latex Concrete.** See Section 606.03.17.
  - B. Class "M" Concrete.** Use either "M1" or "M2". See Section 601.
  - C. Bituminous Asphalt.** Use CL2 ASPH SURF 0.38D PG64-22.
  - D. Epoxy-Sand Slurry.** See Section 606.03.10.
- 3. CONSTRUCTION.**

  - A. Machine prep of existing slab.** Remove concrete from existing slab to a depth of at least  $\frac{1}{4}$ " below the existing surface, and remove all patches completely, in accordance with the requirements of Section 606.03.03.
  - B. Partial Depth Slab Repair and Latex Overlay.** Remove areas determined to be unsound by the Engineer via hydro-demolition or via hand held jackhammers weighing less than 45lbs in accordance with Section 606.02.10 D. Repair/Replace all damaged or severely corroded reinforcing bars prior to partial depth repair operation. The Department will not measure material removal and will consider this work incidental to the bid item "PARTIAL DEPTH PATCHING". Mix and place Latex Modified Concrete Overlay in accordance with Sections 606.03.08 and 606.03.17.
  - C. Asphalt Approach Pavement.** Mill each existing asphalt approach for a distance of 50' from the bridge end. Remove the bituminous material uniformly by making an edge key, so as to provide a smooth transition to the finished bridge when a new bituminous overlay of compacted depth of approximately  $1\frac{1}{2}$ " is added to the approaches. The grinding depth may vary depending of the condition of the existing approach and final elevation of bridge end. Dispose of all removed material away from the site.
  - D. Surface Texturing.** Texture the concrete surface of the overlay in accordance with Section 609.03.10.
  - E. Verifying Field Conditions.** The Contractor shall field verify all joint openings, locations and manufacture before ordering any material. New material that is unsuitable due to variation in existing structure shall be replaced at the Contractors expense.

- F. Damage to the Structure.** The Contractor shall bear all responsibility and expense for any and all damage to the structure during the repair work even to removal and replacement of a fallen span, should the fallen span result from the Contractor's actions.
4. **MEASUREMENT.** See Section 606 and the following:
- A. Latex Modified Concrete for Overlay.** The Department will measure the quantity in cubic yards using the theoretical volume as follows for each bridge:
- |            |                                    |
|------------|------------------------------------|
| 111B00006N | (66'0" x 19'9" x 1.50") = 6.0 CY   |
| 111B00041N | (159'0" x 24'0" x 1.50") = 17.7 CY |
| 111B00055N | (245'0" x 22'0" x 1.50") = 25.0 CY |
- B. Latex Modified Concrete for Partial Depth Patching and variable thickness of Overlay.** The Department will measure the quantity in cubic yards by deducting the theoretical volume of bridge deck overlay (LMC) from the total volume (as indicated by the batch quantity tickets) of Concrete required to obtain the finished grade shown on the Plans or established by the Engineer.
- C. Machine Prep of Slab.** The Department will measure the machine preparation of the existing bridge deck in square yards, which shall include all labor, equipment, and material needed to complete this work.
- D. Steel Reinforcement.** The Department will measure any reinforcing steel necessary for the partial or full depth patch in pounds, which shall include all labor, equipment, and material needed to complete this work.
- E. Asphalt Approach Pavement.** The Department will measure the quantity in square yards, which shall include all labor, equipment, and material needed to complete this work.
5. **PAYMENT.** See Section 606 and the following:
- A. Latex Modified Concrete for Overlay.** The Department will make payment for the Latex Modified Concrete under bid item #08534 "CONCRETE OVERLAY - LATEX" for the quantity in cubic yards complete in place.
- B. Latex Modified Concrete for Partial Depth Patching and variable thickness of Overlay.** The Department will make payment for the Partial Depth Patching under bid item #24094EC "PARTIAL DEPTH PATCHING". Payment will be for the quantity per cubic yard complete in place.
- C. Machine Prep of Slab.** The Department will make payment for the removal of the existing overlay under bid item #08551 "MACHINE PREP OF SLAB". Payment will be for the square yard complete.
- D. Steel Reinforcement.** The Department will make payment for steel reinforcement, if necessary, under bid item #08150 "STEEL REINFORCEMENT". Payment will be at the unit price per pound.
- E. Asphalt Approach Pavement.** The Department will make payment for the completed and accepted quantity of this work under the bid item #03304 "BRIDGE OVERLAY APPROACH PAVEMENT".

## **SPECIAL NOTE FOR REPLACING EXPANSION JOINTS AND/OR INSTALLING ARMORED EDGES FOR CONCRETE ON BRIDGES**

**1. DESCRIPTION.** Perform all work in accordance with the Kentucky Transportation Cabinet, Department of Highway's Standard Specifications for Road and Bridge Construction and applicable Supplemental Specifications, the Standard Drawings (current editions), this Note, and the attached detail drawings. Section references are to the Standard Specifications. This work consists of the following: (1) Furnish all labor, materials, tools, and equipment; (2) Remove existing concrete and expansion joint(s) and/or bridge ends; (3) Install armored edges, modular expansion joint assembly and new concrete as specified and in accordance with the attached detail drawings; (4) Install new joint seals (where required); (5) Maintain and control traffic; and (6) Any other work specified as part of this contract.

**2. MATERIALS.**

- A. Class "M" Concrete.** Use either "M1" or "M2". See Section 601.
- B. Structural Steel.** Use new, commercial grade steel suitable for welding. The Engineer will base acceptance on visual inspection. See attach detailed drawings
- C. Stud Anchors.** The armored edge stud anchors are  $\frac{3}{4}$ " x 6" embedded stud shear connectors conforming to ASTM A108, Grade 1015
- D. Steel Reinforcement.** Use Grade 60. See Section 602.
- E. Epoxy Bond Coat.** See Section 511.
- F. Joint Seals.**
  - Pre-compressed Silicon and Hybrid Foam Joint Seals**
  - 1" ~ SSI SES 112, Watson Bowman Acme FS-100 or BEJS BEJS-ON-A-Reel  
**(Bridge Deck and Parapet).**
  - 4" ~ SSI SES-400, RJ Watson SF-400, Watson Bowman Acme SF-400 or  
BEJS EMSEAL (4") or DS Brown V-400 **(Parapet)**
  - 4" Neoprene Strip Seals (Bridge Deck).**  
See Section 807.03.03.

**3. EQUIPMENT.**

- A. Hammer.** Provide Power driven hammers lighter than nominal 45 lb. class.
- B. Sawing Equipment.** Sawing equipment shall be a concrete saw capable of sawing concrete to the specified depth.
- C. Hydraulic Impact Equipment.** Hydraulic Impact/Skid Steer Type Equipment with a maximum rated striking Energy of 360 ft-lbs are permitted only in areas of concrete removal more than 6 inches away from boundaries of surface areas to remain in service. The Contractor is to provide data information to the engineer on the equipment they wish to utilize to ensure compliance with this note.

4. **CONSTRUCTION.**

- A. Remove Existing Materials.** Remove existing expansion joints, existing modular expansion joint assembly, bridge end armored edges and specified areas of concrete as shown on the attached detailed drawings. Remove debris and/or expansion joint filler as directed by the Engineer. Clean and leave all existing steel reinforcement encountered in place. Damaged steel reinforcement will be repaired/replaced as directed by the Engineer at no additional cost to the Department. Dispose of all removed material entirely away from the job site. This work is incidental to the contract unit price for "Expansion Joint Replacement" or "Armored Edge for Concrete".
- B. Place New Concrete and Armored Edges.** After all specified existing materials have been removed; place new armored edges to match the original grade (See attached detail drawings). Place the new Class "M" concrete to the original grade and finish with broom strokes drawn transversely from curb to curb. All new structural steel shall be cleaned and painted in accordance with requirements of Section 607.03.23, except that surfaces to come in contact with concrete are not to be painted. Blast clean all areas of existing concrete and structural steel to come in contact with new concrete until free of all laitance and deleterious substances immediately prior to the placement of the Class "M" Concrete. The surface areas of existing concrete to come in contact with the new Class "M" Concrete are to be coated with an epoxy bond coat immediately prior to placing new concrete in accordance with Section 511. The interfaces of the new and old concrete shall be as nearly vertical and horizontal as possible. Shop drawings will not be required.
- C. Additional Steel Reinforcement.** Furnish for replacement, as directed by the Engineer, 200 linear feet each joint of #4 steel reinforcing bars in 20' lengths. Place these bars in areas deemed by the Engineer to require additional reinforcement. Field cutting and bending is permitted. Do not place any additional steel reinforcement above the height of the top row of Nelson Studs on the armored edges. Ensure that all exposed steel reinforcement is tied in accordance with Section 602.03.04 prior to pouring the new Class "M" concrete. Deliver unused bars to the Local County Maintenance Barn. Payment will be made in accordance with Section 602.
- D. Stage Construction.** Installation of concrete, armored edges and modular expansion joint assembly in two (or more if specified) stages is necessary. Join the armored edges and modular expansion joint assembly at or near the centerline of the roadway or lane line, field weld and grind smooth.
- E. Preformed Neoprene Joint Seal.** Place the preformed joint seal in one continuous, unbroken length. Place neoprene strip seals as recommended by the manufacturer and in accordance with Section 609.03.04 except that shop drawings will not be required.
- F. Pre-compressed Silicone and Foam Hybrid Seals.** Place pre-compressed silicone and foam Hybrid seals as recommended by the manufacturer. Shop drawings will not be required.
- G. Residual Lead.** Residual lead paint may still be on bridge. The Contractor is advised to take all necessary protective measures including worker safety and environmental regulations when performing surface preparation. The Department will not consider any claims based on residual lead paint.

**G. Verifying Field Conditions.** The Contractor shall field verify all joint openings, locations and manufacture before ordering any material. New material that is unsuitable due to variation in existing structure shall be replaced at the Contractors expense.

**H. Damage to the Structure.** The Contractor shall bear all responsibility and expense for any and all damage to the structure during the repair work even to removal and replacement of a fallen span, should the fallen span result from the Contractor's actions.

**5. MEASUREMENT.**

**A. Expansion Joint Replace 1 In.** The Department will measure the quantity in linear feet from gutter line to gutter line along the centerline of the joint.

**B. Expansion Joint Replace 4 In.** The Department will measure the quantity in linear feet from gutter line to gutter line along the centerline of the joint.

**C. Armored Edge for Concrete.** The Department will measure the quantity in linear feet from gutter line to gutter line along the face of the bridge end.

**D. Steel Reinforcement.** See Section 602.

**6. PAYMENT.**

**A. Expansion Joint Replace 1 In. (03293)** Payment at the contract unit price per linear foot is full compensation for removing specified existing materials, furnishing and installing the new armored edges, concrete, joint seal, and all incidental items necessary to complete the work within the specified pay limits as specified by this note and as shown on the attached detail drawings.

**B. Expansion Joint Replace 4 In. (03298)** Payment at the contract unit price per linear foot is full compensation for removing specified existing materials, furnishing and installing the new armored edges, concrete, neoprene strip seal (bridge deck), Pre-compressed Silicone and Foam Hybrid Seals (parapets) and all incidental items necessary to complete the work within the specified pay limits as specified by this note and as shown on the attached detail drawings.

**C. Armored Edge for Concrete (03299).** Payment at the contract unit price per linear foot is full compensation for placing new armored edge and any approach pavement repair, traffic striping repair and all incidental items necessary to complete the work within the specified pay limits as specified by this note and as shown on the attached detailed drawings.

**D. Steel Reinforcement (08150).** See Section 602.

## SPECIAL NOTE FOR ELIMINATING TRANSVERSE JOINTS ON BRIDGES

1. **DESCRIPTION.** Perform all work in accordance with the Kentucky Transportation Cabinet, Department of Highway's Standard Specifications for Road and Bridge Construction and applicable Supplemental Specifications, the Standard Drawings (current editions), this Note, and the Attached Detailed Drawings. Section references are to the Standard Specifications. This work consists of the following: (1) Furnish all labor, materials, tools, and equipment; (2) Remove existing concrete and expansion device(s) (3) Place new concrete and steel reinforcement as specified (4) Maintain and control traffic; and (5) Any other work specified as part of this contract. See attached detailed drawings.
  
2. **MATERIALS.**
  - A. **Class "M" Concrete.** Use either "M1" or "M2". See Section 601.
  - B. **Steel Reinforcement.** Use Grade 60. See Section 602.
  - C. **Epoxy Bond Coat.** See Section 511.
  
3. **EQUIPMENT.**
  - A. **Hammer.** See Section 606.02.10 B.
  - B. **Sawing Equipment.** See Section 606.02.10 C.
  - C. **Hydraulic Impact Equipment.** See Section 606.02.10 D.
  
4. **CONSTRUCTION.**
  - A. **Remove Existing Materials.** Remove the existing transverse joints, joint filler, and specified areas of concrete as shown on the plans or as directed by the Engineer. Clean and leave all existing steel reinforcement encountered in place. Damaged steel reinforcement will be repaired/replaced as directed by the Engineer at no additional cost to the Department.  
Dispose of all removed material entirely away from the job site. This work is incidental to the contract unit price for "Eliminate Transverse Joint".
  - B. **Additional Steel Reinforcement.** Furnish for this work steel reinforcing bars as shown on the plans. Splice these bars to the existing longitudinal reinforcement in the deck and curb/sidewalk in the areas of removed concrete to tie the slabs together as shown on the plans. Ensure that all exposed steel reinforcement is tied in accordance with Section 602.03.04 prior to pouring the new Class "M" concrete.
  - C. **Place New Concrete.** Blast-clean all areas of existing concrete and structural steel to come in contact with new concrete until free of all laitance and deleterious substances immediately prior to the placement of the Class "M" Concrete. The surface areas of existing concrete to come in contact with the new Class "M" Concrete are to be coated with an epoxy bond coat immediately prior to placing new concrete in accordance with Section 511. The interfaces of the new and old concrete shall be as nearly vertical and horizontal as possible. Place new Class "M" Concrete to the specified grade and finish to receive the new overlay or as shown on the plans. On the sidewalk and curb, place the new concrete to original grade and finish to match the existing curb/sidewalk. Repair all pavement striping that is disturbed.



- D. Stage Construction.** Installation of concrete in two (or more if specified) stages is necessary.
- E. Residual Lead.** Residual lead paint may still be on bridge. The Contractor is advised to take all necessary protective measures including worker safety and environmental regulations when performing surface preparation. The Department will not consider any claims based on residual lead paint.
- F. Verifying Field Conditions.** The Contractor shall field verify all dimensions before ordering any material. New material that is unsuitable due to variation in existing structure shall be replaced at the Contractors expense.
- G. Damage to the Structure.** The Contractor shall bear all responsibility and expense for any and all damage to the structure during the repair work even to removal and replacement of a fallen span, should the fallen span result from the Contractor's actions.

**5. MEASUREMENT.**

- A. Eliminate Transverse Joint.** The Department will measure the quantity in linear feet from plinth to plinth perpendicular to the centerline of the bridge.
- B. Steel Reinforcement.** See Section 602.

**6. PAYMENT.**

- A. Eliminate Transverse Joint (03300).** Payment at the contract unit price per linear foot is full compensation for furnishing equipment, labor, tools and materials needed to complete removal and disposal of the specified existing materials, cleaning and straightening of existing steel reinforcement, furnishing and installing the concrete, repairing traffic striping and all incidental items necessary to complete the work within the specified pay limits as specified by this note and as shown on the attached detail drawings.
- B. Steel Reinforcement (08150).** See Section 602.

## SPECIAL NOTE FOR DECK DRAIN RETROFIT

**1. DESCRIPTION.** Perform all work in accordance with the Kentucky Transportation Cabinet, Department of Highway's Standard Specifications for Road and Bridge Construction and applicable Supplemental Specifications, the Standard Drawings, (Current Additions), this note, and the attached detail drawings. This work consists of: (1) Furnish all labor, materials, tools, and equipment; (2) Install Deck Drain Retrofit and (3) Any other work specified as part of this contract.

### 1. MATERIALS

- C. Poly-methyl methacrylate.** Use new, commercial grade, ¼" thick Poly-methyl methacrylate known as acrylic glass or its various trade names, like Plexiglass®. The Engineer will base acceptance on visual inspection.
- D. Anchors.** Will allow galvanized all-tread ½"x 6" or an approved alternate.
- E. Grout.** See Section 511.

### 3. CONSTRUCTION

- A. Deck Drain Retrofit.** After all areas of Beam Repairs are complete; place PMMA glass (Type B) as shown in attached detail drawings.
- B. Deck Drain Cleaning.** Remove all debris obstructing the function of the deck drain.
- C. Verifying Field Conditions.** The Contractor shall field verify all dimensions, before ordering any material. New material that is unsuitable due to variation in existing structure shall be replaced at the Contractors expense.
- D. Damage to the structure.** The Contractor shall bear all responsibility and expense for any and all damage to the structure during the repair work, even to the removal and replacement of a fallen span, should the fallen span result from the Contractors actions.

### 4. MEASUREMENT

- A. Deck Drain Retrofit (Type A, B and C for 111B00055N).** The Department will measure this quantity as each.

### 5. PAYMENT

- A. Deck Drain Retrofit ~ (Type A, B, and C for 111B00055N) (24692EC).** Payment at the contract unit price per each is full compensation for furnishing and installing the new acrylic glass panels, and all incidental items necessary to complete the work within the specified pay limits as specified by this note and as shown on the attached detail drawings.

## SPECIAL NOTE FOR BRIDGE CLEANING AND PREVENTIVE MAINTENANCE

**1. DESCRIPTION.** Perform all work in accordance with the Kentucky Transportation Cabinet, Department of Highway's 2012 Standard Specification for Road and Bridge Construction applicable Supplemental Specifications, Standard Drawings, this Note and Attached Detailed Drawings. Section references are to the Standard Specifications. This work consists of the following: (1) Furnish all labor, materials, tools, and equipment; (2) All items included in Bridge Cleaning and Preventive Maintenance (3) Maintain and control traffic; (4) All other work required for this contract.

**2. MATERIALS.**

**A. Wash Water**

Use clean potable water for all pressure washing.

**B. Concrete Coatings (Abutment Caps)**

Use one of the coatings from the following manufactures:

<b>Manufacture</b>	<b>Prime Coat</b>	<b>Finish Coat</b>
Sherwin Williams	Macropoxy 646	Acrolon 218 HS
PPG	Amberlock 2	Devoe Devflex
Carboline	Carboguard 890	Carbothane 133 HB
Tnemec	Elastogrip 151	EnviroCrete 15

**C. Bearing Lubricant**

Use one of the lubricants from the following manufactures:

<b>Manufacture</b>	<b>Lubricant</b>
Bostik Inc.,	Never Seez - Mariner's Choice
Mobil Oil	Mobil Centaur Moly NLGI Grades 1 or 2
Certified Labs	Premalube #1 WG

**3. CONSTRUCTION.**

**A. Bridge Cleaning.**

Specified bridge abutment components, end of beams and end diaphragms shall have all debris shall be removed. See attached detailed drawings for each bridge addressing components having debris removal. Equipment for removing debris from the bridge components shall be determined by the Contractor, subject to the approval of the Engineer. The Contractor shall prevent any debris from entering any body of water, bridge drainage system, or traffic lanes. All debris removed shall be disposed of in a suitable off-site disposal facility. Remove all vegetation needed to facilitate the bridge cleaning. **All cost to complete Debris Removal, and Remove Vegetation shall as specified shall be included in the Lump Sum price for "Bridge Cleaning".**

**B. Stratified and Pack Rust Removal.**

Stratified and pack rust shall be removed from all bearing devices. All existing bearing lubrication shall be removed. See attached detailed drawings for each bridge showing location and quantity of the bearing devices. Hand tools including wire brushes, scrapers or impact devices (hand hammers or power chisels) are to be used for removing stratified and pack rust. All surfaces to have stratified and pack rust removed shall be cleaned to an SSPC SP-2 level. All debris collected shall be disposed of in a suitable off-site disposal facility. **All cost to complete Stratified, Pack Rust Removal and removal of existing bearing lubricant shall be considered incidental to the unit price bid for "Lubricate Bearing".**

**C. Pressure Washing.**

Specified bridge abutment components, beam ends and end diaphragms shall be pressure washed. See attached detailed drawings for each bridge addressing components to be pressure washed. All equipment for pressure washing shall be operated at a minimum pressure of up 4,000 psi with 0 degree spinner tip and/or fan tips as determined by the engineer at the working location with a minimum flow rate of 3.5 gal/minute provided that these pressures do not damage any components of the structure. Pressure and flow rates shall be reduced to a level satisfactory to the Engineer should any damage occur due to power washing procedures. Pressure washing shall be operated at distance of approximately six inches from and perpendicular to the surface. All pressure washing wands shall be equipped with a gauge to accurately determine the amount pressure used. Pressure washing of any bridge element will proceed from top of wash area to bottom of wash area. Wash water will not be released to a bridge element previously washed. Perform all pressure washing at temperatures above 40 degrees Fahrenheit. **All cost to complete Pressure Washing as specified shall be included in the Lump Sum price for Lump Sum price for "Bridge Cleaning".**

**D. Concrete Coatings Application.**

All abutment components, beam ends and end diaphragms shall have concrete coating applied to as specified after debris removal and power washing. Use compressed air to remove any loose debris from the surfaces that are to be coated after power washing. See concrete coating diagram. All coatings shall be applied within manufacturers recommended dry film thickness range. Comply with KYTC “Standard Specifications for Road and Bridge Construction” Section 614.03.02 and coatings supplier recommended conditions for application. Allow the surfaces to be coated to dry before any coating is applied. The coating must be applied to a clean and dry surface. All coating application shall be executed using brushes, rollers, etc. No spray application will be permitted. The Department requires acceptance testing of samples obtained on a per-lot basis per-shipment. The Division of Materials shall perform acceptance testing. Test samples shall be taken at the Contractor’s paint storage site.

Department personnel shall perform sampling. Allow (10) working days for testing and approval of the sampled paint. It is the Contractor’s responsibility to maintain an adequate inventory of approved paint. The Department shall assume no responsibility for lost work due to rejection of paint or approved paint subsequently found to be defective during the application process. Perform all concrete coating application at temperatures above 40 degrees Fahrenheit or in accordance with manufactures specifications.

**The finish coat shall be gray and will meet the following values.**

	<b>L*</b>	<b>a*</b>	<b>b*</b>
<b>Grey</b>	<b>74.94</b>	<b>- 1.54</b>	<b>3.92</b>

All cost to complete Concrete Coating Application as specified shall be included in the Lump Sum price for “Concrete Coatings”.

**Approximate square footage of concrete to have concrete coatings applied for each bridge follows:**

120B00055N ~ 450 Square Feet

**The square footage listed this bridge is for informational purposes only.**

**E. Bearing Lubrication Application.**

Bearing devices shall be lubricated as specified after all stratified rust and pack rust is removed and power washing is complete, bearing devices shall have lubricant applied to all surfaces of the bearing including bearing plates and points of movement. See attached detailed drawings for each bridge showing location and quantity of the bearing devices. Allow bearing devices to dry before lubricant is applied. Perform all bearing lubrication application at temperatures above 40 degrees Fahrenheit or in accordance with manufactures specifications. All cost to complete Bearing Lubrication Application as specified shall be included in the unit price Each for “Lubricate Bearing”

**F. Sequence of Work.**

Complete work in the sequence listed below:

1. Debris Removal
2. Stratified Rust Removal
3. Pressure Washing
4. Concrete Coating Application
5. Bearing Lubrication Application

**G. Inspection.**

The Cabinet will provide inspection for all items required in this contract. Visual inspection will be required upon completion of each work item for each structure component or at the discretion of the Engineer at any time. All visual inspection shall be performed within arm's length distance.

1. **Debris Removal:** Visual Inspection
2. **Stratified Rust or Pack Rust Removal:** Visual Inspection and Scraper  
Test any surface cleaned to SSPC SP2 will be inspected by a dull scraper test to ascertain adherence of existing coating and a hammer test for tightness of pack rust.
3. **Power Washing:** Visual Inspection.
4. **Concrete Coating:**  
Prime Coat Application Check for dry film thickness\*, and defects in the Paint.  
Finish Coat Application Check for dry film thickness\*, paint appearance, color and quality of application.  
\*Destructive DFTs shall be used. Contractor shall repair all test locations, cost will be considered incidental to the contract.
5. **Bearing Greasing:** Visual Inspection.

**H. Verifying Field Conditions.**

The Contractor shall be familiar with all conditions at each bridge site. The Cabinet will not consider any claims due to the Contractor having not familiarized themselves with requirements of this work.

**I. Residual Lead.**

Residual lead paint may still be on bridge. The Contractor is advised to take all necessary protective measures including worker safety and environmental regulations when performing surface preparation. The Department will not consider any claims based on residual lead paint.

**J. Damage to the structure.**

The Contractor shall bear all responsibility and expense for any and all damage to the structure during the repair work, even to the removal and replacement of a fallen span, should the fallen span result from the Contractors actions.

4. **MEASUREMENT.**

**Bridge Cleaning:** The Cabinet will measure this item by Lump Sum, completed and accepted.

**Concrete Coating:** The Cabinet will measure this item by Lump Sum, completed and accepted.

**Bearing Lubrication:** The Cabinet will measure this item by Each, completed and accepted.

5. **PAYMENT.**

**Bridge Cleaning (24981EC):** Payment at the contract unit price for “Lump Sum” is full compensation for Debris Removal, Deck Drain Cleaning, Pressure Washing and all incidental items required to complete this with as specified in this note and attached detailed drawings.

**Concrete Coating (24982EC):** Payment at the contract unit price for “Lump Sum” is full compensation for applying the concrete coatings and all incidental items required to complete this work as specified in this note and attached detailed drawings.

**Bearing Lubrication (24983EC):** Payment at the contract unit price “Each” is full compensation for applying bearing lubrication and all incidental items required to complete this work as specified in this note and attached detailed drawings.

**SPECIAL NOTE FOR CONTRACT COMPLETION DATE AND LIQUIDATED DAMAGES ON BRIDGE REPAIR CONTRACTS**

- 1. COMPLETION DATE.** The Contractor has the option of selecting the starting date for this Contract. Once selected, notify the Department in writing of the date selected at least two weeks prior to beginning work. All work is to be completed by the date listed below. An allotted number of Calendar days are assigned to each structure in this contract as shown below.

<u>STRUCTURE</u>	<u>NO. OF CALENDAR DAYS</u>	<u>COMPLETION DATE</u>
111B00006N	30	November 15, 2019
111B00041N	30	November 15, 2019
111B00055N	30	November 15, 2019

Contrary to Section 108.07.02, the Engineer will begin charging calendar days for a structure on the day the Contractor starts work or sets up traffic control on that particular structure.

- 2. LIQUIDATED DAMAGES.** Liquidated damages will be assessed the Contractor in accordance with the Transportation Cabinet, Department of Highway's Standard Specifications for Road and Bridge Construction (current edition), Section 108.09, when either the allotted number of calendar days or the November 15, 2019 date is exceeded.

Contrary to the Standard Specifications, liquidated damages will be assessed the Contractor during the months of December, January, February and March when the contract time has expired on any individual bridge or bridges. Contract time will be charged during these months.

All construction must be completed in accordance with the weather limitations specified in Section 606 and/or Section 601 as applicable. No extension of Contract time will be granted due to inclement weather or temperature limitations that occur due to starting work on the Contract or a structure late in the construction season.



## **SPECIAL NOTE FOR TRAFFIC CONTROL ON BRIDGE REPAIR CONTRACTS**

### **1. TRAFFIC CONTROL GENERAL**

Except as provided herein, traffic shall be maintained in accordance with the 2012 Standard Specifications, Section 112. Except for the roadway and traffic control bid items listed, all items of work necessary to maintain and control traffic will be paid at the lump sum bid price to "Maintain and Control Traffic". Contrary to Section 106.01, traffic control devices used on this project may be new or used in new condition, at the beginning of the work and maintained in like new condition until completion of the work.

### **2. TRAFFIC COORDINATOR**

Furnish a Traffic Coordinator as per Section 112. The Traffic Coordinator shall inspect the project maintenance of traffic, at least three times daily, or as directed by the Engineer, during the Contractor's operations and at any time a lane closure is in place. The personnel shall have access on the project to a radio or telephone to be used in case of emergencies or accidents. The Traffic Coordinator shall report all incidents throughout the work zone to the Engineer on the project. The Contractor shall furnish the name and telephone number where the Traffic Coordinator can be contacted at all times.

### **3. SIGNS**

Contrary to Section 112.04.02, only long term signs (sign intended to be continuously in place for more than 3 days) will be measured for payment; short term signs (signs intended to be left in place for 3 days or less) will not be measured for payment but will be incidental to Maintain and Control Traffic.

The contractor is to install warning signs for wide loads in advance of the bridge under the direction of the Engineer. The Department will not measure installation, maintenance, or removal for payment, and will consider these incidentals to Maintain and Control Traffic.

### **4. TEMPORARY PAVEMENT STRIPING**

Skip lines and/or solid lines through the length of the tapers for lane closures and other striping as directed by the Engineer shall be temporarily covered with 6" black removable tape. Permanent removal of all other pavement striping for traffic control shall be considered incidental to Maintain and Control Traffic. Temporary pavement striping shall be paid only once per course in accordance with Section 112.04.07. The Contractor shall replace any temporary striping that becomes damaged or fails to adhere to the pavement before dark on the day of the notification. Liquidated damages shall be assessed to the Contractor at a rate of \$500 per day for failing to replace temporary striping within this time limit.

**5. PROJECT PHASING & CONSTRUCTION PROCEDURES**

Maintain one lane of traffic on each bridge at all times in accordance with Standard Drawing No. TTC-110 for lane closures. The minimum clear lane width required is as follows:

<u>Structure</u>	<u>Clear Lane Width</u>
111B00006N	9'-10 1/2"
111B00041N	12'-0"
111B00055N	11'-0"

**6. TEMPORARY SIGNAL**

Provide, install, and maintain a temporary traffic signal as specified below. The Contractor must provide a 24-hour contact person and number available to maintain the temporary signals as needed.

<u>Structure</u>	<u>Signal</u>
111B00006N	2 Phase
111B00041N	2 Phase
111B00055N	2 Phase

**7. MEASUREMENT.**

**Temporary Signs:**

The Cabinet will measure this item by "Square Feet".

**Maintain and Control Traffic:**

The Cabinet will measure this item by "Lump Sum".

**Lane Closure and Temp Signal 2 Phase:**

The Cabinet will measure this item by "Each".

**Pave Striping-Temp Rem Tape-B, W, and Y:**

The Department will measure the quantity in "Linear Feet".

**8. PAYMENT.**

**Temporary Signs (02562)**

Payment at the contract unit price for "Square Feet" is full compensation for all items to complete this work as specified.

**Maintain and Control Traffic (02650):**

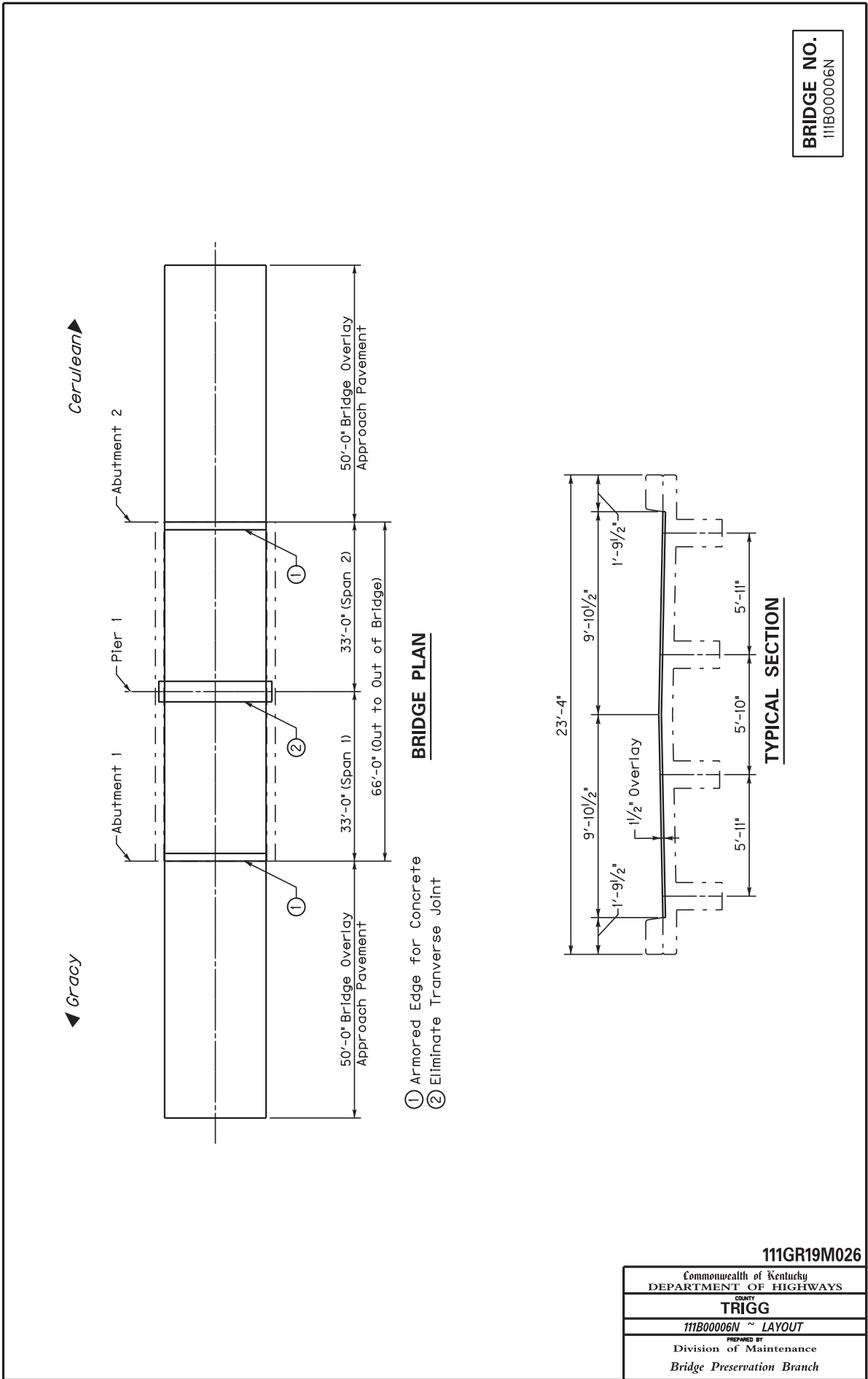
Payment at the contract unit price for "Lump Sum" is full compensation for all items to complete this work as specified.

**Lane Closure (02653) and Temp Signal 2 Phase (04933):**

Payment at the contract unit price "Each" is full compensation for all items to complete this work as specified.

**Pave Striping-Temp Rem Tape-B (06549), W (06550), and Y (06551):**

Payment at the contract unit price "Lineal Feet" is full compensation for all items to complete this work as specified.



**BRIDGE NO.**  
111B00006N

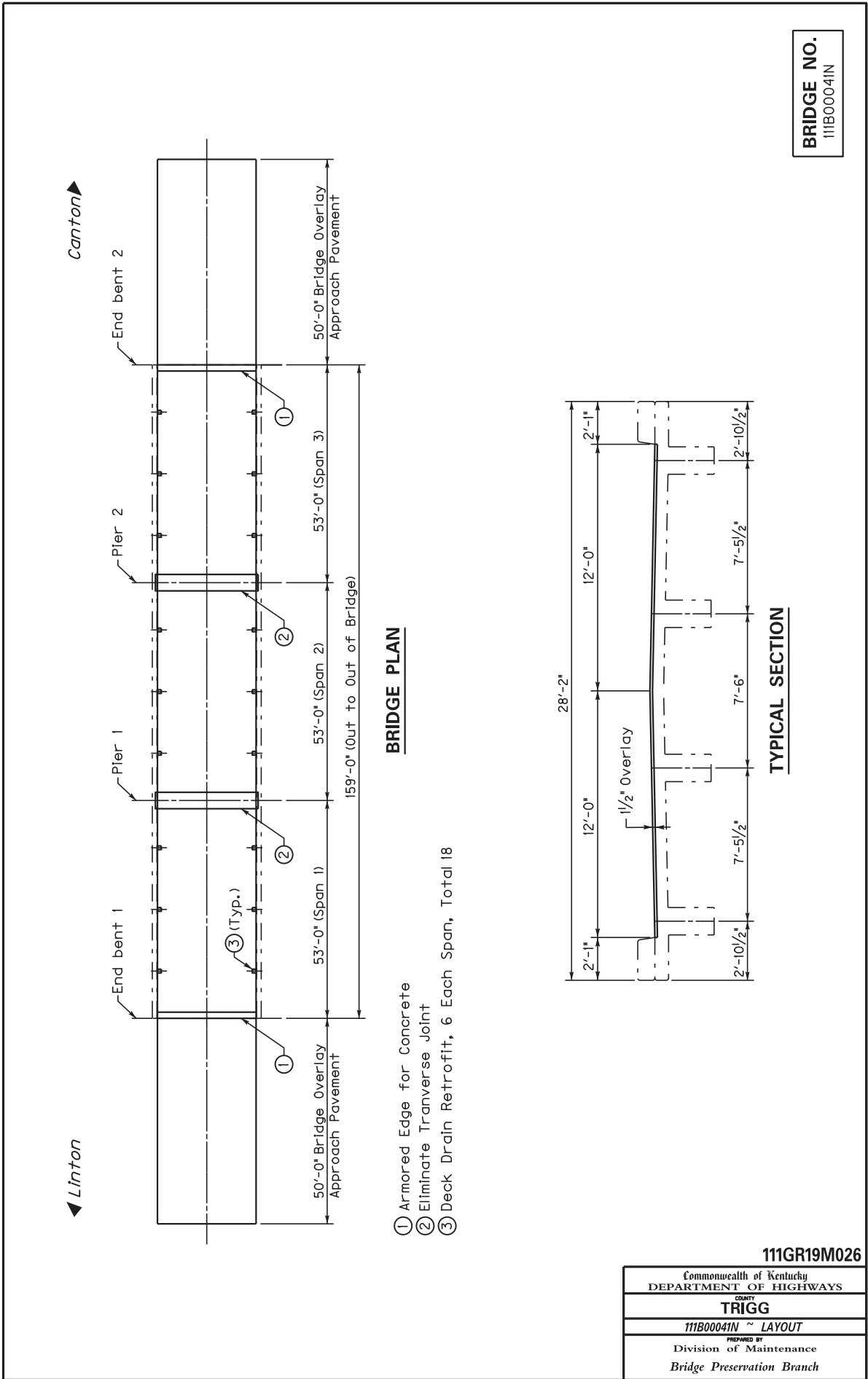
**BRIDGE PLAN**

- ① Armored Edge for Concrete
- ② Eliminate Transverse Joint

**TYPICAL SECTION**

111GR19M026

Commonwealth of Kentucky DEPARTMENT OF HIGHWAYS
COUNTY <b>TRIGG</b>
111B00006N ~ LAYOUT
PREPARED BY Division of Maintenance Bridge Preservation Branch



**BRIDGE NO.**  
111B00041N

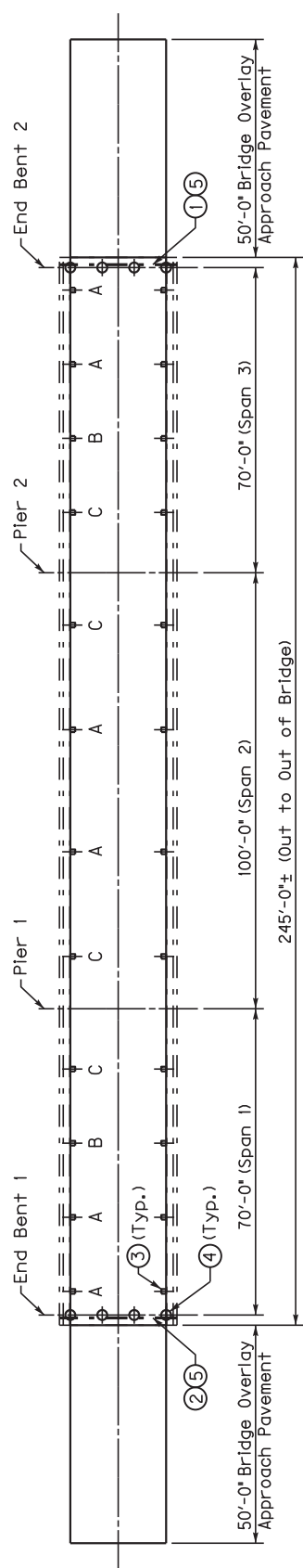
- ① Armored Edge for Concrete
- ② Eliminate Transverse Joint
- ③ Deck Drain Retrofit, 6 Each Span, Total 18

**111GR19M026**

Commonwealth of Kentucky DEPARTMENT OF HIGHWAYS
COUNTY <b>TRIGG</b>
111B00041N ~ LAYOUT
PREPARED BY Division of Maintenance Bridge Preservation Branch

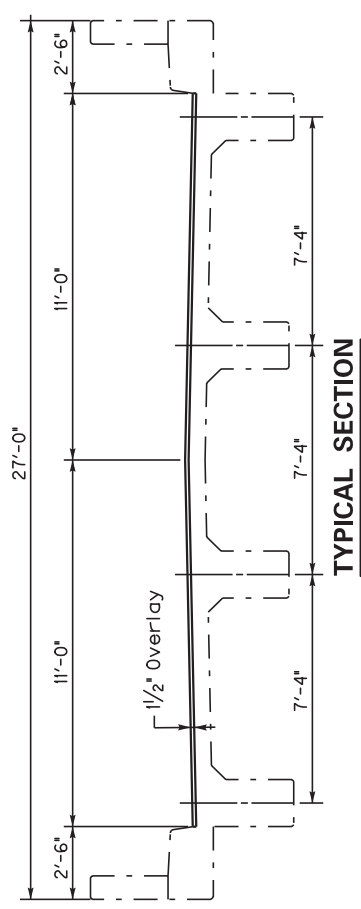
◀ KY 276

KY 139 ▶



**BRIDGE PLAN**

- ① Expansion Joint Replace 1"
- ② Expansion Joint Replace 4"
- ③ Deck Drain Retrofit, 8 Each Span, Total 24.  
12 Type A, 4 Type B and 8 Type C.
- ④ Bearing Lubrication, 4 Each End Bent, Total 8.
- ⑤ Bridge Cleaning and Concrete Coatings.

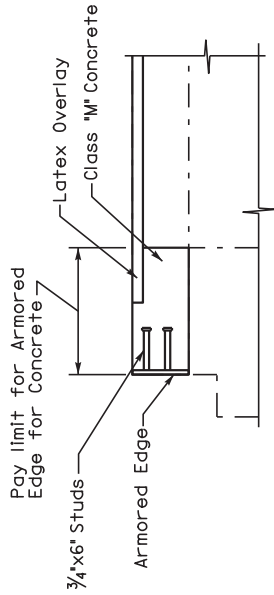


**TYPICAL SECTION**

**BRIDGE NO.**  
111B00055N

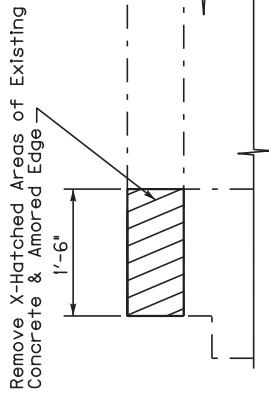
**111GR19M026**

Commonwealth of Kentucky DEPARTMENT OF HIGHWAYS
COUNTY <b>TRIGG</b>
111B00055N ~ LAYOUT
PREPARED BY Division of Maintenance Bridge Preservation Branch



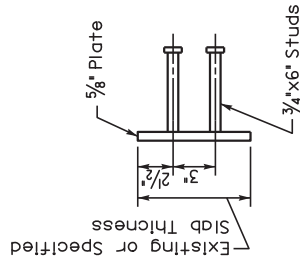
**SECTION THROUGH SLAB END**

Proposed

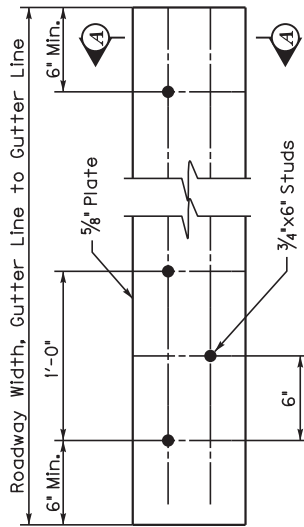


**SECTION THROUGH SLAB END**

Existing



**SECTION A-A**



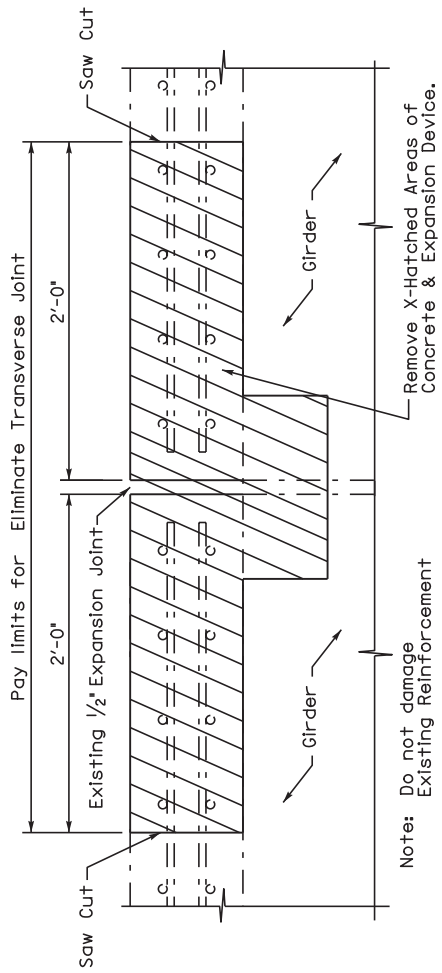
**ARMORED EDGE**

**BRIDGE NO.**  
111B00006N  
111B00004IN

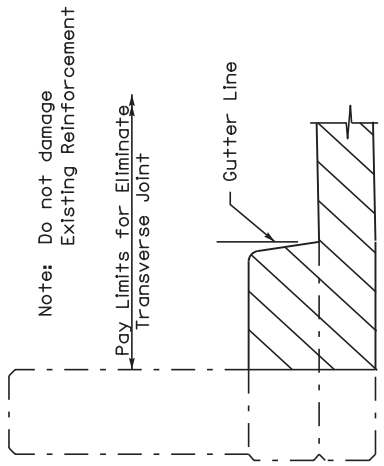
*Note: See Special Note for Replacing Expansion Dams and/or  
Installing Armored Edges for Concrete on Bridges*

111GR19M026

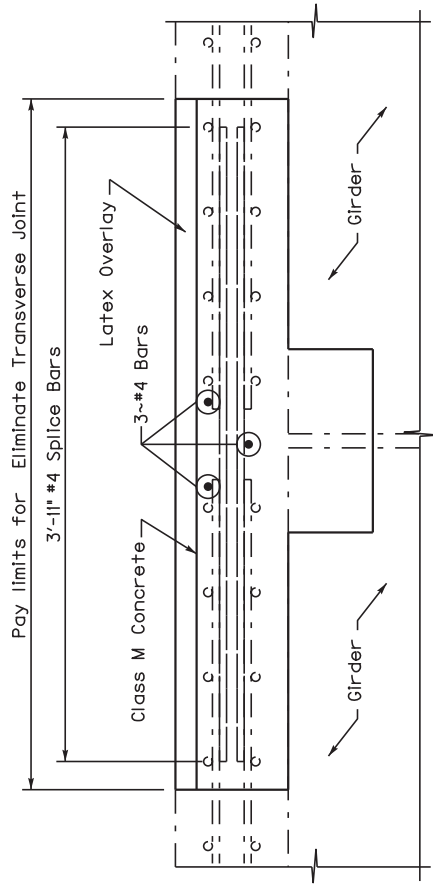
Commonwealth of Kentucky DEPARTMENT OF HIGHWAYS
COUNTY <b>TRIGG</b>
PREPARED BY <b>ARMORED EDGE FOR CONCRETE</b>
Division of Maintenance Bridge Preservation Branch



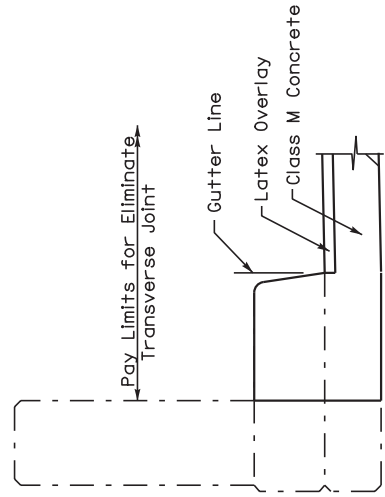
**SECTION THROUGH JOINT**  
(Existing)



**SECTION THROUGH PAPAPET**  
(Existing)



**SECTION THROUGH JOINT**  
(Proposed)



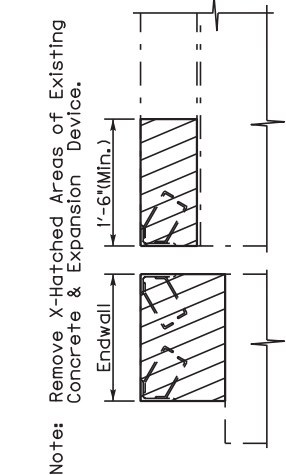
**SECTION THROUGH PAPAPET**  
(Proposed)

**BRIDGE NO.**  
111B00006N  
111B00004IN

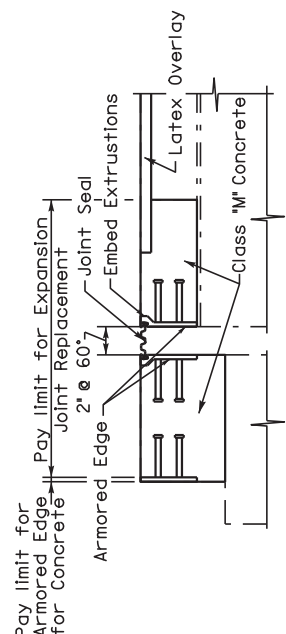
*Note: See Special Note for Eliminating Transverse Joints on Bridges*

111GR19M026

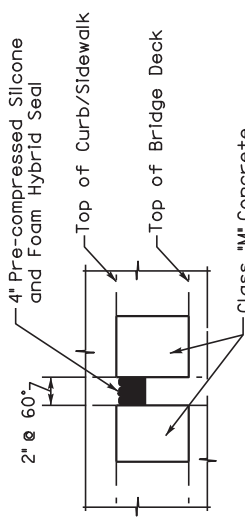
Commonwealth of Kentucky DEPARTMENT OF HIGHWAYS
COUNTY <b>TRIGG</b>
<b>ELIMINATE TRANSVERSE JOINT</b>
PREPARED BY Division of Maintenance Bridge Preservation Branch



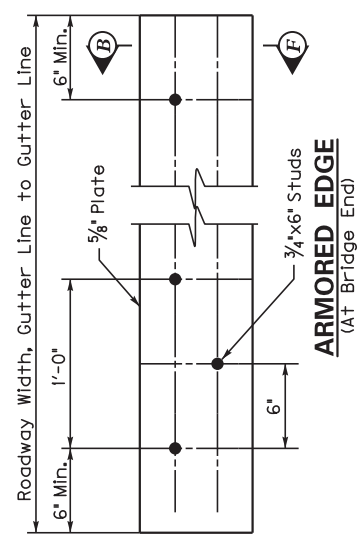
Note: Remove X-hatched Areas of Existing Concrete & Expansion Device.



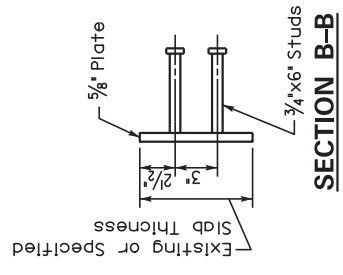
**SECTION THROUGH JOINT @ SLAB**  
(Proposed @ Abutment/End Bent)



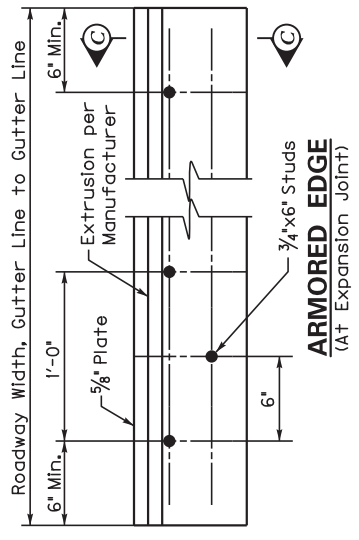
**SECTION THROUGH JOINT @ PARAPET**  
(Proposed, Plinth Type)



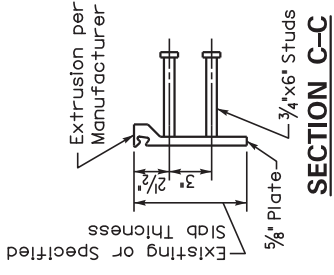
**ARMORED EDGE**  
(At Bridge End)



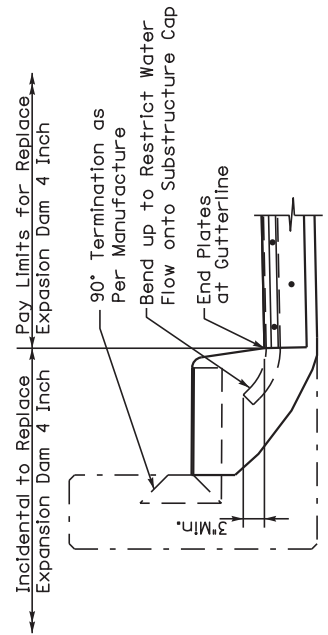
**SECTION B-B**



**ARMORED EDGE**  
(At Expansion Joint)



**SECTION C-C**



**SECTION THROUGH PARAPET**  
(Proposed)

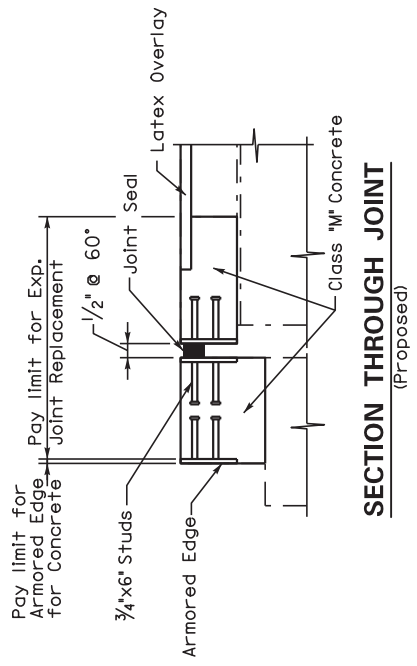
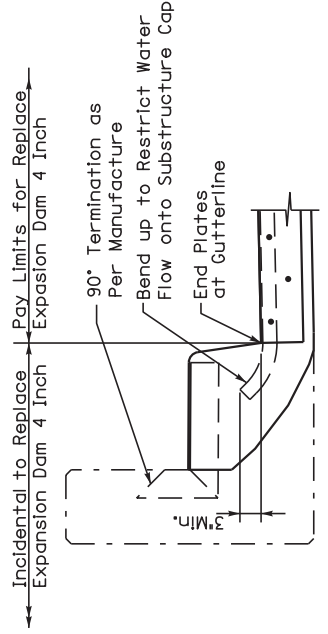
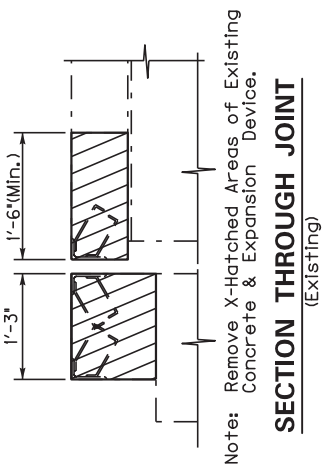
Note: See Special Note for Replacing Expansion Dams and/or Installing Armored Edges for Concrete on Bridges

**BRIDGE NO.**  
111B00055N

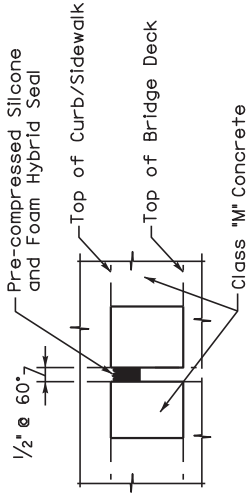
**111GR19M026**

Commonwealth of Kentucky DEPARTMENT OF HIGHWAYS
COUNTY <b>TRIGG</b>
120B00005N ~ EXPANSION DAM REPLACE 4"
PREPARED BY Division of Maintenance Bridge Preservation Branch

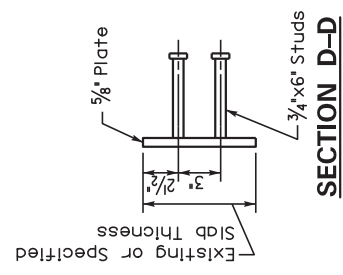
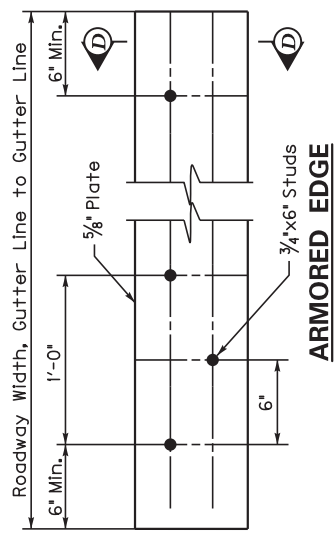




**SECTION THROUGH PARAPET**  
(Proposed, Plinth Type)



**SECTION THROUGH JOINT @ PARAPET**  
(Proposed, Plinth Type)

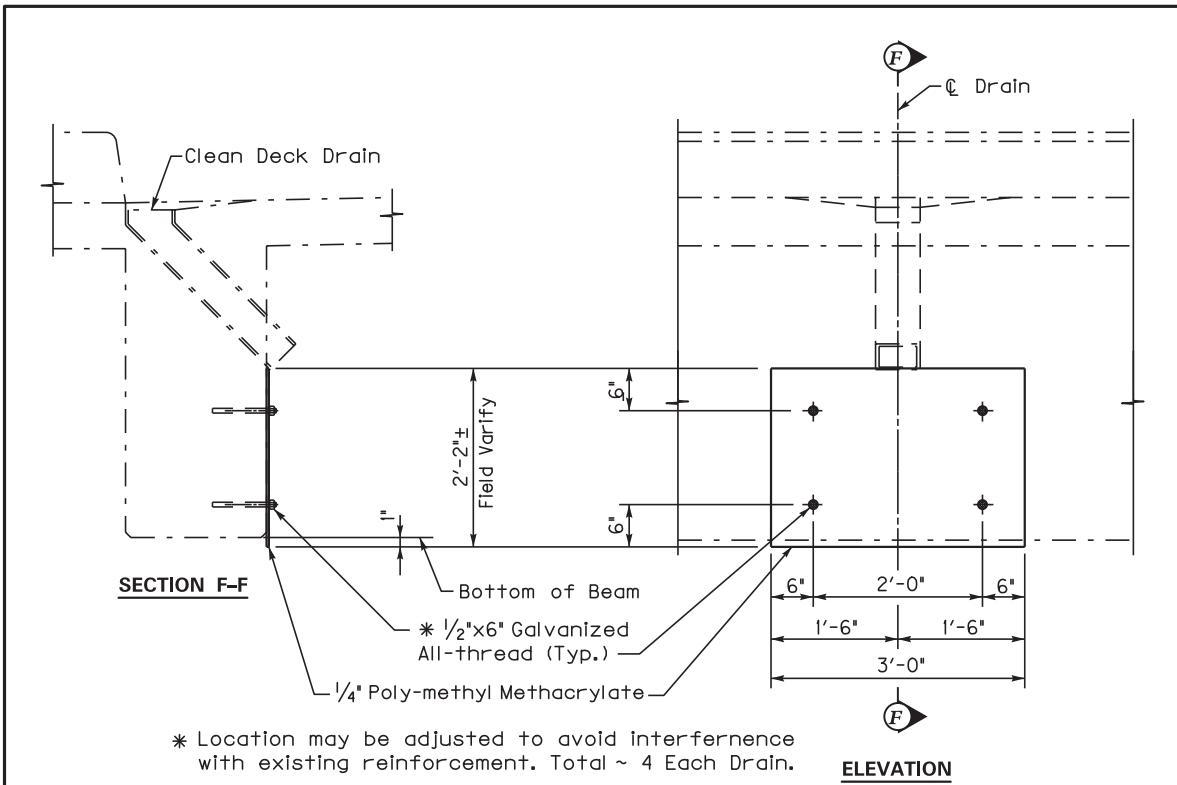


Note: See Special Note for Replacing Expansion Dams and/or Installing Armored Edges for Concrete on Bridges

**BRIDGE NO.**  
111B00055N

**111GR19M026**

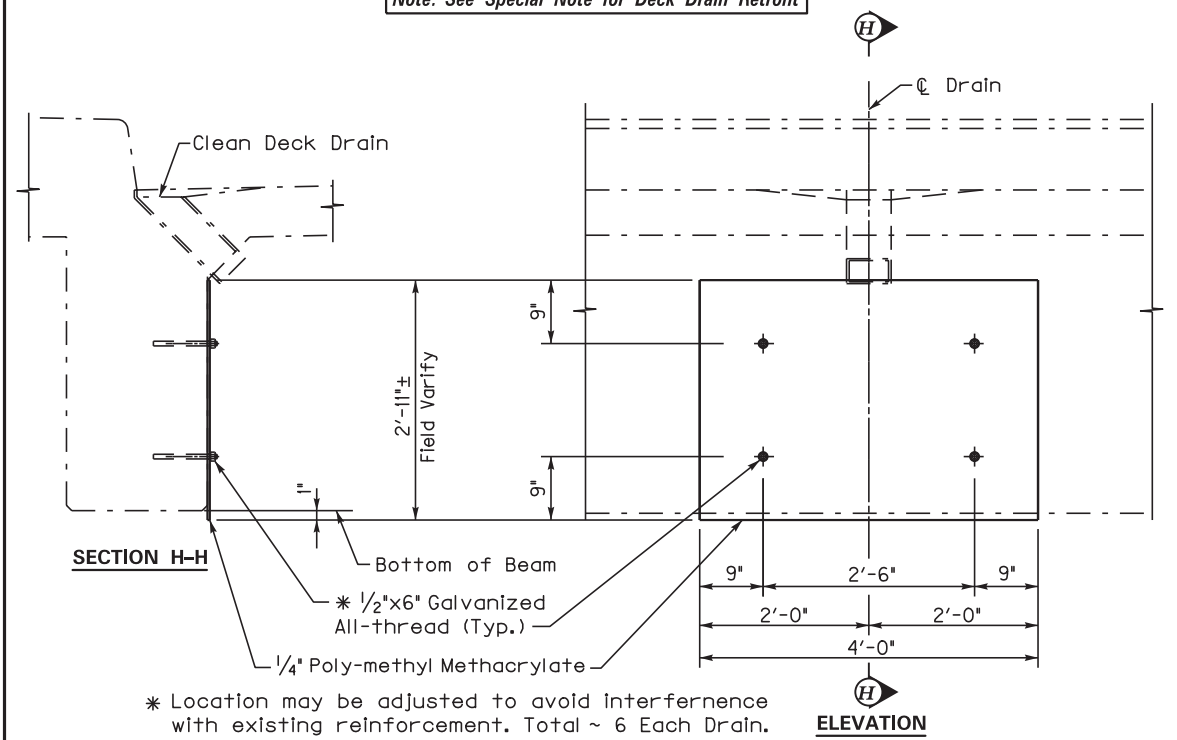
Commonwealth of Kentucky DEPARTMENT OF HIGHWAYS
COUNTY <b>TRIGG</b>
120B00005N ~ EXPANSION DAM REPLACE 1"
PREPARED BY Division of Maintenance Bridge Preservation Branch



**DECK DRAIN RETROFIT**

**BRIDGE NO.**  
111B00041N

*Note: See Special Note for Deck Drain Retrofit*

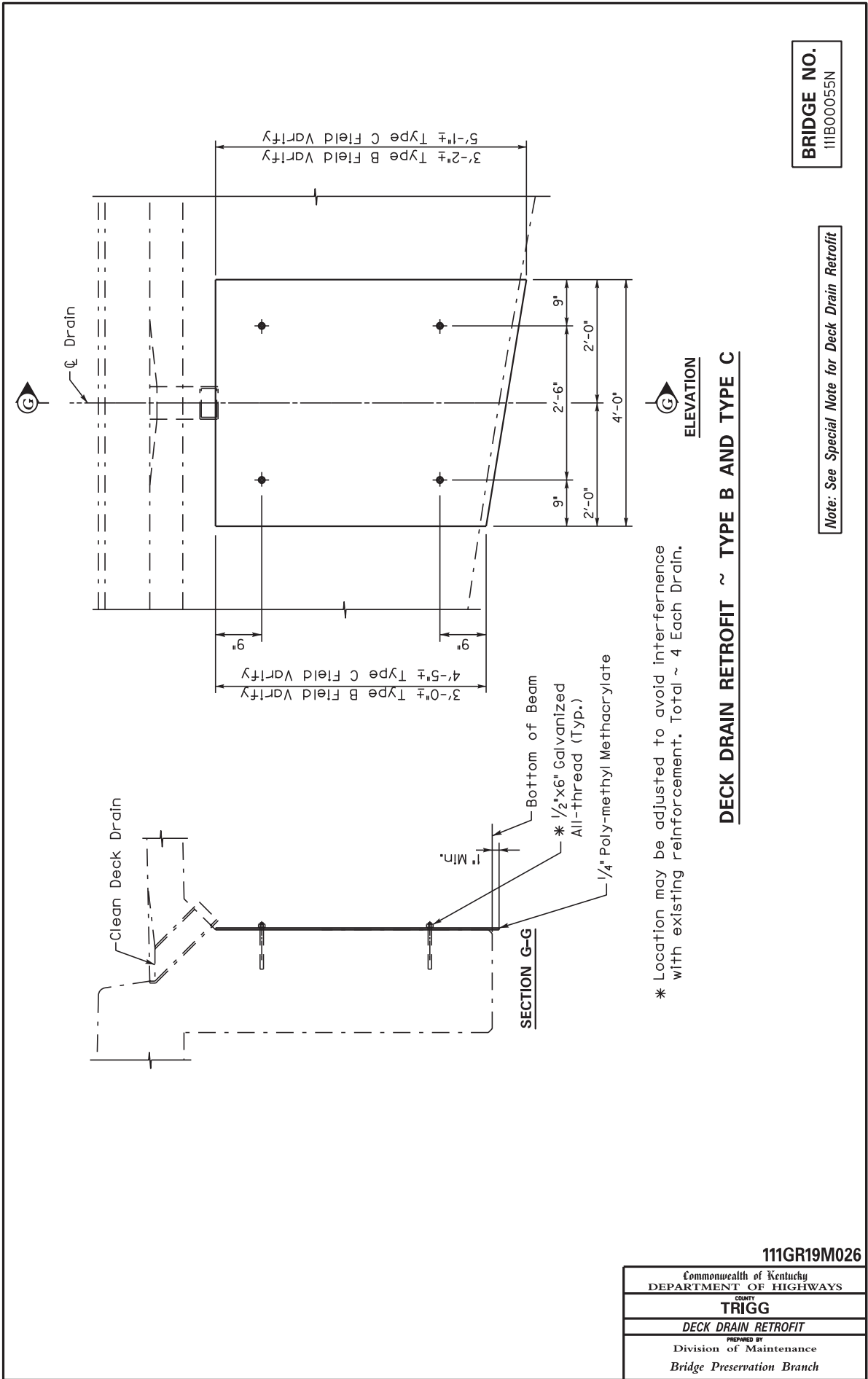


**DECK DRAIN RETROFIT ~ TYPE A**

**BRIDGE NO.**  
111B00055N

**111GR19M026**

Commonwealth of Kentucky DEPARTMENT OF HIGHWAYS
COUNTY <b>TRIGG</b>
<b>DECK DRAIN RETROFIT</b>
PREPARED BY Division of Maintenance Bridge Preservation Branch



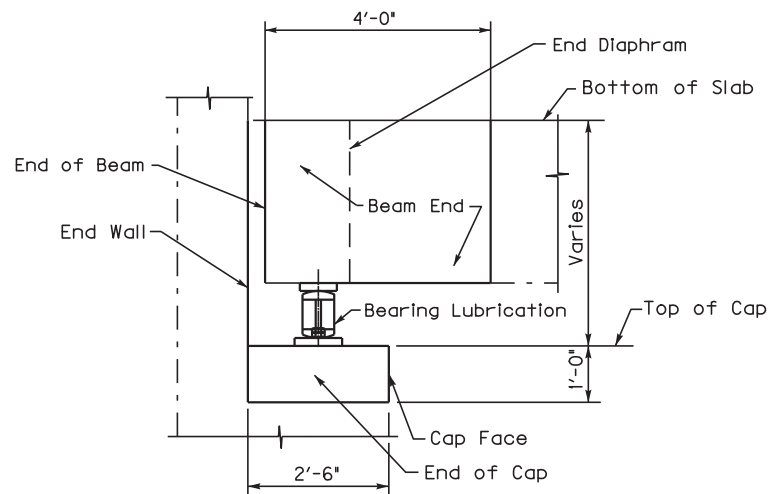
**BRIDGE NO.**  
111B00055N

*Note: See Special Note for Deck Drain Retrofit*

**DECK DRAIN RETROFIT ~ TYPE B AND TYPE C**

\* Location may be adjusted to avoid interference with existing reinforcement. Total ~ 4 Each Drain.

<b>111GR19M026</b>	
Commonwealth of Kentucky DEPARTMENT OF HIGHWAYS	
COUNTY <b>TRIGG</b>	
<b>DECK DRAIN RETROFIT</b>	
PREPARED BY Division of Maintenance Bridge Preservation Branch	



Front Face of End Wall, Top and Face of Cap the Entire Length of Cap including Cap Ends, Beam Ends and End Diaphragms shall have debris removed pressure washed and have concrete coating applied as specified within the limits shown.

**SECTION THROUGH ABUTMENT AND BEAM END**

**BRIDGE CLEANING AND  
 PREVENTIVE MAINTENANCE**

**BRIDGE NO.**  
 111B00055N

*Note: See Special Note for Bridge Cleaning  
 and Preventive Maintenance*

**111GR19M026**

Commonwealth of Kentucky DEPARTMENT OF HIGHWAYS
COUNTY <b>TRIGG</b>
<b>BRIDGE CLEANING AND PREVENTIVE MAINTENANCE</b>
PREPARED BY Division of Maintenance Bridge Preservation Branch





**Matthew G. Bevin**  
Governor

**COMMONWEALTH OF KENTUCKY  
TRANSPORTATION CABINET**  
Frankfort, Kentucky 40622  
[www.transportation.ky.gov/](http://www.transportation.ky.gov/)

**Greg Thomas**  
Secretary

## **Asbestos Inspection Report**

To: Tom Mathews

District: Central Office

Date: February 7, 2019

Conducted By: O'Dail Lawson

Report Prepared By: O'Dail Lawson

---

### **Project and Structure Identification**

Project Number: Trigg CID 192962

Structure ID: 111B00006N

Structure Location: Buffalo Cerulean Road over Tributary of Muddy Creek

Sample Description: There were no suspect materials present on this structure.

Inspection Date: February 5, 2019

### **Results and Recommendations**

The results of the samples collected were negative for the presence of asbestos above 1%.  
No abatement is required at this time.

It is recommended that this report accompany the 10-Day Notice of Intent for Demolition ([DEP7036 Form](#)) which is to be submitted to the Kentucky Division of Air Quality prior to abatement, demolition, or renovation of any building or structure in the Commonwealth.



**ENVIRONMENTAL TRAINING CONCEPTS, INC**  
P.O. Box 99603 Louisville, KY 40269  
(502)640-2951

Certification Number: ETC-AIR-060518-00303

# O'Dail Lawson


has on 06-05-2018, attended and successfully completed the requirements and passed the examination with a score of 70% of better on the entitled course.

## ASBESTOS INSPECTOR REFRESHER

Training was in accordance with 40 CFR Part 763 (AHERA) approved by the Commonwealth of Kentucky, the Indiana Department of Environmental Management, Tennessee Department of Environment & Conservation and the Arkansas Department of Environmental Quality. The above student received requisite training for Asbestos Accreditation under Title II of the Toxic Substance Act (TSCA).

Conducted at: 2660 Technology Drive, Louisville, KY

Expiration Date: 06-05-2019

  
Name - Training Manager

  
Name - Instructor



**COMMONWEALTH OF KENTUCKY  
TRANSPORTATION CABINET**

Frankfort, Kentucky 40622  
[www.transportation.ky.gov/](http://www.transportation.ky.gov/)

**Matthew G. Bevin**  
Governor

**Greg Thomas**  
Secretary

## **Asbestos Inspection Report**

To: Tom Mathews

District: Central Office

Date: February 18, 2019

Conducted By: O'Dail Lawson

Report Prepared By: O'Dail Lawson

---

### **Project and Structure Identification**

Project Number: Trigg CID 192962

Structure ID: 111B00041N

Structure Location: Linton Road over Donaldson Creek

Sample Description: The samples collected were negative for asbestos.

Inspection Date: February 5, 2019

### **Results and Recommendations**

The results of the samples collected were negative for the presence of asbestos above 1%.  
No abatement is required at this time.

It is recommended that this report accompany the 10-Day Notice of Intent for Demolition ([DEP7036 Form](#)) which is to be submitted to the Kentucky Division of Air Quality prior to abatement, demolition, or renovation of any building or structure in the Commonwealth.







***MRS, INC.*** MRS, Inc. Analytical Laboratory Division

332 West Broadway, Suite 613  
Louisville, Kentucky 40202

(502) 495-1212  
Fax: (502) 491-7111

<b>Client:</b>	<u>KY Transportation Cabinet</u>	<b>Project No:</b>	<u># 902167 B</u>
<b>Address:</b>	<u>200 Mero Street</u>	<b>Sample ID:</b>	<u># 44 - 1</u>
	<u>Frankfort, KY</u>	<b>Sampled:</b>	<u>5-Feb-19</u>
	<u>40601</u>	<b>Received:</b>	<u>13-Feb-19</u>
	<u>Attention O'Dail Lawson</u>	<b>Analyzed:</b>	<u>16-Feb-19 - Point Count -</u>

**Bulk Sample Analysis**

**Sampled by:** O'Dail Lawson

**Facility/Location:** Trigg County / 111B00041N

**Field Description:** Joint Compound

**Laboratory Description:**

hick Black Material

**Asbestos Materials:**

Chrysotile =1/400 = 0.25 % ( < 1 % ) Sample Is Negative

**Non-asbestos Fibrous Materials & Matrix Materials:**

<u>Cellulose</u>	<u>0.25 %</u>
<u>Binders</u>	<u>99.50 %</u>

**Remarks:** The sample was analyzed for asbestos content following the EPA Methodology (600/R-93/116). The test relates only to the items tested. This report does not represent endorsement by NVLAP or any agency of the U.S. Government.

**Analyst:** Winterford Mensah      **Reviewed By:** *Winterford Mensah*  
Signature



**ENVIRONMENTAL TRAINING CONCEPTS, INC**

P.O. Box 99603 Louisville, KY 40269  
(502)640-2951

Certification Number: ETC-AIR-060518-00303

# O'Dail Lawson

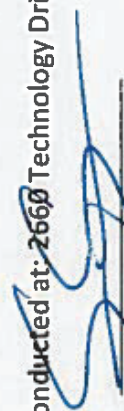
has on 06-05-2018, attended and successfully completed the requirements and passed the examination with a score of 70% of better on the entitled course.

## ASBESTOS INSPECTOR REFRESHER

Training was in accordance with 40 CFR Part 763 (AHERA) approved by the Commonwealth of Kentucky, the Indiana Department of Environmental Management, Tennessee Department of Environment & Conservation and the Arkansas Department of Environmental Quality. The above student received requisite training for Asbestos Accreditation under Title II of the Toxic Substance Act (TSCA).

Conducted at: ~~2668~~ Technology Drive, Louisville, KY

Expiration Date: ~~06-05-2019~~

  
Name - Training Manager

  
Name - Instructor



**COMMONWEALTH OF KENTUCKY  
TRANSPORTATION CABINET**

Frankfort, Kentucky 40622  
[www.transportation.ky.gov/](http://www.transportation.ky.gov/)

**Matthew G. Bevin**  
Governor

**Greg Thomas**  
Secretary

## **Asbestos Inspection Report**

To: Tom Mathews

District: Central Office

Date: February 18, 2019

Conducted By: O'Dail Lawson

Report Prepared By: O'Dail Lawson

---

### **Project and Structure Identification**

Project Number: Trigg CID 192962

Structure ID: 111B00055N

Structure Location: Will Jackson Road over Muddy Fork of Little River

Sample Description: The samples collected were negative for asbestos.

Inspection Date: February 5, 2019

### **Results and Recommendations**

The results of the samples collected were negative for the presence of asbestos above 1%.  
No abatement is required at this time.

It is recommended that this report accompany the 10-Day Notice of Intent for Demolition ([DEP7036 Form](#)) which is to be submitted to the Kentucky Division of Air Quality prior to abatement, demolition, or renovation of any building or structure in the Commonwealth.





<b><i>MRS, INC.</i></b>	<i>MRS, Inc. Analytical Laboratory Division</i>
-------------------------	---

332 West Broadway, Suite 613  
Louisville, Kentucky 40202

(502) 495-1212  
Fax: (502) 491-7111

<b>Client:</b> <u>KY Transportation Cabinet</u>	<b>Project No:</b> <u># 902168 B</u>
<b>Address:</b> <u>200 Mero Street</u>	<b>Sample ID:</b> <u># 55 - 1</u>
<u>Frankfort, KY</u>	<b>Sampled:</b> <u>5-Feb-19</u>
<u>40601</u>	<b>Received:</b> <u>13-Feb-19</u>
<u>Attention O'Dail Lawson</u>	<b>Analyzed:</b> <u>16-Feb-19 - Point Count -</u>

**Bulk Sample Analysis**

<b>Sampled by:</b>	<u>O'Dail Lawson</u>		
<b>Facility/Location:</b>	<u>Trigg County - 111B00055N</u>		
<b>Field Description:</b>	<u>Joint Compound</u>		
<b>Laboratory Description:</b>	<u>hick Black Material</u>		
<b>Asbestos Materials:</b>	<u>Chrysotile =1/400 = 0.25 % ( &lt; 1 % ) Sample Is Negative</u>		
<b>Non-asbestos Fibrous Materials &amp; Matrix Materials:</b>	<u>Cellulose</u>	<u>0.25 %</u>	
	<u>Binders</u>	<u>99.50 %</u>	
<b>Remarks:</b> The sample was analyzed for asbestos content following the EPA Methodology (600/R-93/116). The test relates only to the items tested. This report does not represent endorsement by NVLAP or any agency of the U.S. Government.			
<b>Analyst:</b>	<u>Winterford Mensah</u>	<b>Reviewed By:</b>	<u><i>Winterford Mensah</i></u> <small>Signature</small>

***MRS, INC.*** MRS, Inc. Analytical Laboratory Division

332 West Broadway, Suite 613  
Louisville, Kentucky 40202

(502) 495-1212  
Fax: (502) 491-7111

<b>Client:</b>	<u>KY Transportation Cabinet</u>	<b>Project No:</b>	<u># 902168 B</u>
<b>Address:</b>	<u>200 Mero Street</u>	<b>Sample ID:</b>	<u># 55 - 2</u>
	<u>Frankfort, KY</u>	<b>Sampled:</b>	<u>5-Feb-19</u>
	<u>40601</u>	<b>Received:</b>	<u>13-Feb-19</u>
		<b>Analyzed:</b>	<u>16-Feb-19 - Point Count -</u>
	<u>Attention O'Dail Lawson</u>		

**Bulk Sample Analysis**

**Sampled by:** O'Dail Lawson

**Facility/Location:** Trigg County - 111B00055N

**Field Description:** Guard Rail Mastic

**Laboratory Description:**  
hick Black Material

**Asbestos Materials:**  
Chrysotile =1/400 = 0.25 % ( < 1 % ) Sample Is Negative

**Non-asbestos Fibrous Materials & Matrix Materials:**

<u>Cellulose</u>	<u>0.25 %</u>
<u>Binders</u>	<u>99.50 %</u>

**Remarks:** The sample was analyzed for asbestos content following the EPA Methodology (600/R-93/116). The test relates only to the items tested. This report does not represent endorsement by NVLAP or any agency of the U.S. Government.

**Analyst:** Winterford Mensah      **Reviewed By:** *Winterford Mensah*  
Signature





**ENVIRONMENTAL TRAINING CONCEPTS, INC**  
P.O. Box 99603 Louisville, KY 40269  
(502)640-2951

Certification Number: ETC-AIR-060518-00303

# O'Dail Lawson


has on 06-05-2018, attended and successfully completed the requirements and passed the examination with a score of 70% of better on the entitled course.

## ASBESTOS INSPECTOR REFRESHER

Training was in accordance with 40 CFR Part 763 (AHERA) approved by the Commonwealth of Kentucky, the Indiana Department of Environmental Management, Tennessee Department of Environment & Conservation and the Arkansas Department of Environmental Quality. The above student received requisite training for Asbestos Accreditation under Title II of the Toxic Substance Act (TSCA).

Conducted at: ~~2550~~ Technology Drive, Louisville, KY

Expiration Date: ~~06-05-2019~~

  
Name - Training Manager

  
Name - Instructor

# MATERIAL SUMMARY

**CONTRACT ID: 192962**

**111GR19026 - FE02**

**MB11101261901**

TRIGG COUNTY 111B00006N BUFFALO CERULEAN ROAD MP 01.17  
KY 126 OVER TRIBUTARY OF MUDDY CREEK BRIDGE DECK RESTORATION & WATERPROOFING.

Project Line No	Bid Code	DESCRIPTION	Quantity	Unit
0005	02650	MAINTAIN & CONTROL TRAFFIC - - 111B00006N	1.00	LS
0010	02562	TEMPORARY SIGNS - - 111B00006N	145.00	SQFT
0015	02653	LANE CLOSURE - - 111B00006N	2.00	EACH
0020	03299	ARMORED EDGE FOR CONCRETE - - 111B00006N	40.00	LF
0025	02569	DEMOBILIZATION	1.00	LS
0030	03304	BRIDGE OVERLAY APPROACH PAVEMENT - - 111B00006N	223.00	SQYD
0035	06514	PAVE STRIPING-PERM PAINT-4 IN - - 111B00006N	83.00	LF
0040	06549	PAVE STRIPING-TEMP REM TAPE-B - - 111B00006N	1,000.00	LF
0045	06550	PAVE STRIPING-TEMP REM TAPE-W - - 111B00006N	2,000.00	LF
0050	06551	PAVE STRIPING-TEMP REM TAPE-Y - - 111B00006N	2,000.00	LF
0055	08150	STEEL REINFORCEMENT - - 111B00006N	400.00	LB
0060	08504	EPOXY SAND SLURRY - - 111B00006N	55.00	SQYD
0065	08526	CONC CLASS M FULL DEPTH PATCH - - 111B00006N	2.00	CUYD
0070	08534	CONCRETE OVERLAY-LATEX - - 111B00006N	6.10	CUYD
0075	08549	BLAST CLEANING - - 111B00006N	202.00	SQYD
0080	08551	MACHINE PREP OF SLAB - - 111B00006N	147.00	SQYD
0085	24094EC	PARTIAL DEPTH PATCHING - - 111B00006N	2.00	CUYD
0090	03300	ELIMINATE TRANSVERSE JOINT - - 111B00006N	22.00	LF
0095	04933	TEMP SIGNAL 2 PHASE - - 111B00006N	2.00	EACH

# MATERIAL SUMMARY

**CONTRACT ID: 192962**

**111GR19026 - FE02**

**MB11101641901**

TRIGG COUNTY 111B00041N LINTON ROAD MP 04.95  
KY 164 OVER DONALDSON CREEK BRIDGE DECK RESTORATION & WATERPROOFING.

Project Line No	Bid Code	DESCRIPTION	Quantity	Unit
0100	02562	TEMPORARY SIGNS - - 111B00041N	145.00	SQFT
0105	02650	MAINTAIN & CONTROL TRAFFIC - - 111B00041N	1.00	LS
0110	02653	LANE CLOSURE - - 111B00041N	2.00	EACH
0115	03299	ARMORED EDGE FOR CONCRETE - - 111B00041N	48.00	LF
0120	03300	ELIMINATE TRANSVERSE JOINT - - 111B00041N	52.00	LF
0125	03304	BRIDGE OVERLAY APPROACH PAVEMENT - - 111B00041N	267.00	SQYD
0130	06514	PAVE STRIPING-PERM PAINT-4 IN - - 111B00041N	130.00	LF
0135	06549	PAVE STRIPING-TEMP REM TAPE-B - - 111B00041N	1,000.00	LF
0140	06550	PAVE STRIPING-TEMP REM TAPE-W - - 111B00041N	2,000.00	LF
0145	06551	PAVE STRIPING-TEMP REM TAPE-Y - - 111B00041N	2,000.00	LF
0150	08150	STEEL REINFORCEMENT - - 111B00041N	620.00	LB
0155	08504	EPOXY SAND SLURRY - - 111B00041N	108.90	SQYD
0160	08526	CONC CLASS M FULL DEPTH PATCH - - 111B00041N	4.00	CUYD
0165	08534	CONCRETE OVERLAY-LATEX - - 111B00041N	17.80	CUYD
0170	08549	BLAST CLEANING - - 111B00041N	533.00	SQYD
0175	08551	MACHINE PREP OF SLAB - - 111B00041N	424.00	SQYD
0180	24094EC	PARTIAL DEPTH PATCHING - - 111B00041N	4.00	CUYD
0185	02569	DEMOBILIZATION	1.00	LS
0190	24692EC	DECK DRAIN RETROFIT - - 111B00041N	18.00	EACH
0195	04933	TEMP SIGNAL 2 PHASE - - 111B00041N	2.00	EACH

# MATERIAL SUMMARY

**CONTRACT ID: 192962**

**111GR19026 - FE02**

**MB11107781901**

TRIGG COUNTY 111B00055N WILL JACKSON ROAD MP 03.71  
KY 778 OVER LITTLE RIVER BRIDGE DECK RESTORATION & WATERPROOFING.

Project Line No	Bid Code	DESCRIPTION	Quantity	Unit
0200	02562	TEMPORARY SIGNS - - 111B00055N	145.00	SQFT
0205	02650	MAINTAIN & CONTROL TRAFFIC - - 111B00055N	1.00	LS
0210	02653	LANE CLOSURE - - 111B00055N	2.00	EACH
0215	03299	ARMORED EDGE FOR CONCRETE - - 111B00055N	44.00	LF
0220	03304	BRIDGE OVERLAY APPROACH PAVEMENT - - 111B00055N	245.00	SQYD
0225	06514	PAVE STRIPING-PERM PAINT-4 IN - - 111B00055N	516.00	LF
0230	06549	PAVE STRIPING-TEMP REM TAPE-B - - 111B00055N	1,000.00	LF
0235	06550	PAVE STRIPING-TEMP REM TAPE-W - - 111B00055N	2,000.00	LF
0240	06551	PAVE STRIPING-TEMP REM TAPE-Y - - 111B00055N	2,000.00	LF
0245	08150	STEEL REINFORCEMENT - - 111B00055N	270.00	LB
0250	08504	EPOXY SAND SLURRY - - 111B00055N	181.50	SQYD
0255	08526	CONC CLASS M FULL DEPTH PATCH - - 111B00055N	6.00	CUYD
0260	08534	CONCRETE OVERLAY-LATEX - - 111B00055N	25.00	CUYD
0265	08549	BLAST CLEANING - - 111B00055N	780.00	SQYD
0270	08551	MACHINE PREP OF SLAB - - 111B00055N	599.00	SQYD
0275	24094EC	PARTIAL DEPTH PATCHING - - 111B00055N	6.00	CUYD
0280	24692EC	DECK DRAIN RETROFIT - - 111B00055N TYPE A	12.00	EACH
0285	02569	DEMOBILIZATION	1.00	LS
0290	24692EC	DECK DRAIN RETROFIT - - 111B00055N TYPE B	4.00	EACH
0295	24692EC	DECK DRAIN RETROFIT - - 111B00055N TYPE C	8.00	EACH
0300	24981EC	BRIDGE CLEANING - - 111B00055N	1.00	LS
0305	24982EC	CONCRETE COATING - - 111B00055N	1.00	LS
0310	24983EC	BEARING LUBRICATION - - 111B00055N	8.00	EACH
0315	03293	EXPAN JOINT REPLACE 1 IN - - 111B00055N	22.00	LF
0320	03298	EXPAN JOINT REPLACE 4 IN - - 111B00055N	22.00	LF
0325	04933	TEMP SIGNAL 2 PHASE - - 111B00055N	2.00	EACH

**PART II**  
**SPECIFICATIONS AND STANDARD DRAWINGS**

### **SPECIFICATIONS REFERENCE**

Any reference in the plans or proposal to previous editions of the *Standard Specifications for Road and Bridge Construction* and *Standard Drawings* are superseded by *Standard Specifications for Road and Bridge Construction, Edition of 2012* and *Standard Drawings, Edition of 2016*.

## **SUPPLEMENTAL SPECIFICATIONS**

The contractor shall use the Supplemental Specifications that are effective at the time of letting.  
The Supplemental Specifications can be found at the following link:

<http://transportation.ky.gov/Construction/Pages/Kentucky-Standard-Specifications.aspx>



**STANDARD DRAWINGS THAT APPLY**

**TRAFFIC**  
**~ TEMPORARY ~**  
**TRAFFIC CONTROL**

LANE CLOSURE TWO LANE HIGHWAY  
LANE CLOSURE USING TRAFFIC SIGNALS

TTC-110 C.E.  
TTC-115 C.E.

**BRIDGES**  
**MISCELLANEOUS STANDARDS**

BRIDGE RESTORATION AND WATERPROFING  
WITH CONCRETE OVERLAYS

BGX-009 C.E.

**PART III**

**EMPLOYMENT, WAGE AND RECORD REQUIREMENTS**

**TRANSPORTATION CABINET  
DEPARTMENT OF HIGHWAYS**

**LABOR AND WAGE REQUIREMENTS  
APPLICABLE TO OTHER THAN FEDERAL-AID SYSTEM PROJECTS**

- I. Application
- II. Nondiscrimination of Employees (KRS 344)

**I. APPLICATION**

1. These contract provisions shall apply to all work performed on the contract by the contractor with his own organization and with the assistance of workmen under his immediate superintendence and to all work performed on the contract by piecework, station work or by subcontract. The contractor's organization shall be construed to include only workmen employed and paid directly by the contractor and equipment owned or rented by him, with or without operators.

2. The contractor shall insert in each of his subcontracts all of the stipulations contained in these Required Provisions and such other stipulations as may be required.

3. A breach of any of the stipulations contained in these Required Provisions may be grounds for termination of the contract.

3. If the contractor is in control of apprenticeship or other training or retraining, including on-the-job training programs, he shall not discriminate against an individual because of his race, color, religion, national origin, sex, disability or age forty (40) and over, in admission to, or employment in any program established to provide apprenticeship or other training.

4. The contractor will send to each labor union or representative of workers with which he has a collective bargaining agreement or other contract or understanding, a notice to be provided advising the said labor union or workers' representative of the contractor's commitments under this section, and shall post copies of the notice in conspicuous places available to employees and applicants for employment. The contractor will take such action with respect to any subcontract or purchase order as the administrating agency may direct as a means of enforcing such provisions, including sanctions for non-compliance.

Revised: January 25, 2017

**II. NONDISCRIMINATION OF EMPLOYEES**

**AN ACT OF THE KENTUCKY  
GENERAL ASSEMBLY TO PREVENT  
DISCRIMINATION IN EMPLOYMENT  
KRS CHAPTER 344  
EFFECTIVE JUNE 16, 1972**

The contract on this project, in accordance with KRS Chapter 344, provides that during the performance of this contract, the contractor agrees as follows:

1. The contractor shall not fail or refuse to hire, or shall not discharge any individual, or otherwise discriminate against an individual with respect to his compensation, terms, conditions, or privileges of employment, because of such individual's race, color, religion, national origin, sex, disability or age (forty and above); or limit, segregate, or classify his employees in any way which would deprive or tend to deprive an individual of employment opportunities or otherwise adversely affect his status as an employee, because of such individual's race, color, religion, national origin, sex, disability or age forty (40) and over. The contractor agrees to post in conspicuous places, available to employees and applicants for employment, notices to be provided setting forth the provisions of this nondiscrimination clause.

2. The contractor shall not print or publish or cause to be printed or published a notice or advertisement relating to employment by such an employer or membership in or any classification or referral for employment by the employment agency, indicating any preference, limitation, specification, or discrimination, based on race, color, religion, national origin, sex, or age forty (40) and over, or because the person is a qualified individual with a disability, except that such a notice or advertisement may indicate a preference, limitation, or specification based on religion, national origin, sex, or age forty (40) and over, or because the person is a qualified individual with a disability, when religion, national origin, sex, or age forty (40) and over, or because the person is a qualified individual with a disability, is a bona fide occupational qualification for employment.

## EXECUTIVE BRANCH CODE OF ETHICS

In the 1992 regular legislative session, the General Assembly passed and Governor Brereton Jones signed Senate Bill 63 (codified as KRS 11A), the Executive Branch Code of Ethics, which states, in part:

KRS 11A.040 (7) provides:

No present or former public servant shall, within six (6) months following termination of his office or employment, accept employment, compensation, or other economic benefit from any person or business that contracts or does business with, or is regulated by, the state in matters in which he was directly involved during the last thirty-six (36) months of his tenure. This provision shall not prohibit an individual from returning to the same business, firm, occupation, or profession in which he was involved prior to taking office or beginning his term of employment, or for which he received, prior to his state employment, a professional degree or license, provided that, for a period of six (6) months, he personally refrains from working on any matter in which he was directly involved during the last thirty-six (36) months of his tenure in state government. This subsection shall not prohibit the performance of ministerial functions, including but not limited to filing tax returns, filing applications for permits or licenses, or filing incorporation papers, nor shall it prohibit the former officer or public servant from receiving public funds disbursed through entitlement programs.

KRS 11A.040 (9) states:

A former public servant shall not represent a person or business before a state agency in a matter in which the former public servant was directly involved during the last thirty-six (36) months of his tenure, for a period of one (1) year after the latter of:

- a) The date of leaving office or termination of employment; or
- b) The date the term of office expires to which the public servant was elected.

This law is intended to promote public confidence in the integrity of state government and to declare as public policy the idea that state employees should view their work as a public trust and not as a way to obtain private benefits.

If you have worked for the executive branch of state government within the past six months, you may be subject to the law's prohibitions. The law's applicability may be different if you hold elected office or are contemplating representation of another before a state agency.

Also, if you are affiliated with a firm which does business with the state and which employs former state executive-branch employees, you should be aware that the law may apply to them.

In case of doubt, the law permits you to request an advisory opinion from the Executive Branch Ethics Commission, 3 Fountain Place, Frankfort, Kentucky 40601; telephone (502) 564-7954.

Revised: January 27, 2017

### **Kentucky Equal Employment Opportunity Act of 1978**

The requirements of the Kentucky Equal Employment Opportunity Act of 1978 (KRS 45.560-45.640) shall apply to this Contract. The apparent low Bidder will be required to submit EEO forms to the Division of Construction Procurement, which will then forward to the Finance and Administration Cabinet for review and approval. No award will become effective until all forms are submitted and EEO/CC has certified compliance. The required EEO forms are as follows:

- EEO-1: Employer Information Report
- Affidavit of Intent to Comply
- Employee Data Sheet
- Subcontractor Report

These forms are available on the Finance and Administration's web page under ***Vendor Information, Standard Attachments and General Terms*** at the following address:  
**<https://www.eProcurement.ky.gov>**.

Bidders currently certified as being in compliance by the Finance and Administration Cabinet may submit a copy of their approval letter in lieu of the referenced EEO forms.

For questions or assistance please contact the Finance and Administration Cabinet by email at **[finance.contractcompliance@ky.gov](mailto:finance.contractcompliance@ky.gov)** or by phone at 502-564-2874.

# EMPLOYEE RIGHTS UNDER THE FAIR LABOR STANDARDS ACT

THE UNITED STATES DEPARTMENT OF LABOR WAGE AND HOUR DIVISION

## FEDERAL MINIMUM WAGE

# \$7.25 PER HOUR

BEGINNING JULY 24, 2009

**OVERTIME PAY** At least 1½ times your regular rate of pay for all hours worked over 40 in a workweek.

**CHILD LABOR** An employee must be at least **16** years old to work in most non-farm jobs and at least **18** to work in non-farm jobs declared hazardous by the Secretary of Labor.

Youths **14** and **15** years old may work outside school hours in various non-manufacturing, non-mining, non-hazardous jobs under the following conditions:

**No more than**

- **3** hours on a school day or **18** hours in a school week;
- **8** hours on a non-school day or **40** hours in a non-school week.

Also, work may not begin before **7 a.m.** or end after **7 p.m.**, except from June 1 through Labor Day, when evening hours are extended to **9 p.m.** Different rules apply in agricultural employment.

**TIP CREDIT** Employers of “tipped employees” must pay a cash wage of at least \$2.13 per hour if they claim a tip credit against their minimum wage obligation. If an employee’s tips combined with the employer’s cash wage of at least \$2.13 per hour do not equal the minimum hourly wage, the employer must make up the difference. Certain other conditions must also be met.

**ENFORCEMENT** The Department of Labor may recover back wages either administratively or through court action, for the employees that have been underpaid in violation of the law. Violations may result in civil or criminal action.

Employers may be assessed civil money penalties of up to \$1,100 for each willful or repeated violation of the minimum wage or overtime pay provisions of the law and up to \$11,000 for each employee who is the subject of a violation of the Act’s child labor provisions. In addition, a civil money penalty of up to \$50,000 may be assessed for each child labor violation that causes the death or serious injury of any minor employee, and such assessments may be doubled, up to \$100,000, when the violations are determined to be willful or repeated. The law also prohibits discriminating against or discharging workers who file a complaint or participate in any proceeding under the Act.

**ADDITIONAL INFORMATION**

- Certain occupations and establishments are exempt from the minimum wage and/or overtime pay provisions.
- Special provisions apply to workers in American Samoa and the Commonwealth of the Northern Mariana Islands.
- Some state laws provide greater employee protections; employers must comply with both.
- The law requires employers to display this poster where employees can readily see it.
- Employees under 20 years of age may be paid \$4.25 per hour during their first 90 consecutive calendar days of employment with an employer.
- Certain full-time students, student learners, apprentices, and workers with disabilities may be paid less than the minimum wage under special certificates issued by the Department of Labor.

For additional information:



# 1-866-4-USWAGE

(1-866-487-9243) TTY: 1-877-889-5627



# WWW.WAGEHOUR.DOL.GOV

**PART IV**  
**INSURANCE**

## INSURANCE

The Contractor shall procure and maintain the following insurance in addition to the insurance required by law:

- 1) Commercial General Liability-Occurrence form – not less than \$2,000,000 General aggregate, \$2,000,000 Products & Completed Aggregate, \$1,000,000 Personal & Advertising, \$1,000,000 each occurrence.
- 2) Automobile Liability- \$1,000,000 per accident
- 3) Employers Liability:
  - a) \$100,000 Each Accident Bodily Injury
  - b) \$500,000 Policy limit Bodily Injury by Disease
  - c) \$100,000 Each Employee Bodily Injury by Disease
- 4) The insurance required above must be evidenced by a Certificate of Insurance and this Certificate of Insurance must contain one of the following statements:
  - a) "policy contains no deductible clauses."
  - b) "policy contains \_\_\_\_\_ (amount) deductible property damage clause but company will pay claim and collect the deductible from the insured."
- 5) KENTUCKY WORKMEN'S COMPENSATION INSURANCE. The contractor shall furnish evidence of coverage of all his employees or give evidence of self-insurance by submitting a copy of a certificate issued by the Workmen's Compensation Board.

The cost of insurance is incidental to all contract items. All subcontractors must meet the same minimum insurance requirements.



**PART V**  
**BID ITEMS**

**PROPOSAL BID ITEMS**

192962

Page 1 of 3

Report Date 2/27/19

**Section: 0001 - BRIDGES**

LINE	BID CODE	ALT	DESCRIPTION	QUANTITY	UNIT	UNIT PRIC	FP	AMOUNT
0010	02562		TEMPORARY SIGNS - 111B00006N	145.00	SQFT		\$	
0020	02650		MAINTAIN & CONTROL TRAFFIC - 111B00006N	1.00	LS		\$	
0030	02653		LANE CLOSURE - 111B00006N	2.00	EACH		\$	
0040	03299		ARMORED EDGE FOR CONCRETE - 111B00006N	40.00	LF		\$	
0050	03300		ELIMINATE TRANSVERSE JOINT - 111B00006N	22.00	LF		\$	
0060	03304		BRIDGE OVERLAY APPROACH PAVEMENT - 111B00006N	223.00	SQYD		\$	
0070	04933		TEMP SIGNAL 2 PHASE - 111B00006N	2.00	EACH		\$	
0080	06514		PAVE STRIPING-PERM PAINT-4 IN - 111B00006N	83.00	LF		\$	
0090	06549		PAVE STRIPING-TEMP REM TAPE-B - 111B00006N	1,000.00	LF		\$	
0100	06550		PAVE STRIPING-TEMP REM TAPE-W - 111B00006N	2,000.00	LF		\$	
0110	06551		PAVE STRIPING-TEMP REM TAPE-Y - 111B00006N	2,000.00	LF		\$	
0120	08150		STEEL REINFORCEMENT - 111B00006N	400.00	LB		\$	
0130	08504		EPOXY SAND SLURRY - 111B00006N	55.00	SQYD		\$	
0140	08526		CONC CLASS M FULL DEPTH PATCH - 111B00006N	2.00	CUYD		\$	
0150	08534		CONCRETE OVERLAY-LATEX - 111B00006N	6.10	CUYD		\$	
0160	08549		BLAST CLEANING - 111B00006N	202.00	SQYD		\$	
0170	08551		MACHINE PREP OF SLAB - 111B00006N	147.00	SQYD		\$	
0180	24094EC		PARTIAL DEPTH PATCHING - 111B00006N	2.00	CUYD		\$	

**Section: 0002 - BRIDGES**

LINE	BID CODE	ALT	DESCRIPTION	QUANTITY	UNIT	UNIT PRIC	FP	AMOUNT
0190	02562		TEMPORARY SIGNS - 111B00041N	145.00	SQFT		\$	
0200	02650		MAINTAIN & CONTROL TRAFFIC - 111B00041N	1.00	LS		\$	
0210	02653		LANE CLOSURE - 111B00041N	2.00	EACH		\$	
0220	03299		ARMORED EDGE FOR CONCRETE - 111B00041N	48.00	LF		\$	
0230	03300		ELIMINATE TRANSVERSE JOINT - 111B00041N	52.00	LF		\$	
0240	03304		BRIDGE OVERLAY APPROACH PAVEMENT - 111B00041N	267.00	SQYD		\$	

**PROPOSAL BID ITEMS**

192962

Page 2 of 3

Report Date 2/27/19

LINE	BID CODE	ALT	DESCRIPTION	QUANTITY	UNIT	UNIT PRIC	FP	AMOUNT
0250	04933		TEMP SIGNAL 2 PHASE - 111B00041N	2.00	EACH		\$	
0260	06514		PAVE STRIPING-PERM PAINT-4 IN - 111B00041N	130.00	LF		\$	
0270	06549		PAVE STRIPING-TEMP REM TAPE-B - 111B00041N	1,000.00	LF		\$	
0280	06550		PAVE STRIPING-TEMP REM TAPE-W - 111B00041N	2,000.00	LF		\$	
0290	06551		PAVE STRIPING-TEMP REM TAPE-Y - 111B00041N	2,000.00	LF		\$	
0300	08150		STEEL REINFORCEMENT - 111B00041N	620.00	LB		\$	
0310	08504		EPOXY SAND SLURRY - 111B00041N	108.90	SQYD		\$	
0320	08526		CONC CLASS M FULL DEPTH PATCH - 111B00041N	4.00	CUYD		\$	
0330	08534		CONCRETE OVERLAY-LATEX - 111B00041N	17.80	CUYD		\$	
0340	08549		BLAST CLEANING - 111B00041N	533.00	SQYD		\$	
0350	08551		MACHINE PREP OF SLAB - 111B00041N	424.00	SQYD		\$	
0360	24094EC		PARTIAL DEPTH PATCHING - 111B00041N	4.00	CUYD		\$	
0370	24692EC		DECK DRAIN RETROFIT - 111B00041N	18.00	EACH		\$	

**Section: 0003 - BRIDGES**

LINE	BID CODE	ALT	DESCRIPTION	QUANTITY	UNIT	UNIT PRIC	FP	AMOUNT
0380	02562		TEMPORARY SIGNS - 111B00055N	145.00	SQFT		\$	
0390	02650		MAINTAIN & CONTROL TRAFFIC - 111B00055N	1.00	LS		\$	
0400	02653		LANE CLOSURE - 111B00055N	2.00	EACH		\$	
0410	03293		EXPAN JOINT REPLACE 1 IN - 111B00055N	22.00	LF		\$	
0420	03298		EXPAN JOINT REPLACE 4 IN - 111B00055N	22.00	LF		\$	
0430	03299		ARMORED EDGE FOR CONCRETE - 111B00055N	44.00	LF		\$	
0440	03304		BRIDGE OVERLAY APPROACH PAVEMENT - 111B00055N	245.00	SQYD		\$	
0450	04933		TEMP SIGNAL 2 PHASE - 111B00055N	2.00	EACH		\$	
0460	06514		PAVE STRIPING-PERM PAINT-4 IN - 111B00055N	516.00	LF		\$	
0470	06549		PAVE STRIPING-TEMP REM TAPE-B - 111B00055N	1,000.00	LF		\$	
0480	06550		PAVE STRIPING-TEMP REM TAPE-W - 111B00055N	2,000.00	LF		\$	
0490	06551		PAVE STRIPING-TEMP REM TAPE-Y - 111B00055N	2,000.00	LF		\$	

**PROPOSAL BID ITEMS**

192962

Page 3 of 3

Report Date 2/27/19

LINE	BID CODE	ALT	DESCRIPTION	QUANTITY	UNIT	UNIT PRIC	FP	AMOUNT
0500	08150		STEEL REINFORCEMENT - 111B00055N	270.00	LB		\$	
0510	08504		EPOXY SAND SLURRY - 111B00055N	181.50	SQYD		\$	
0520	08526		CONC CLASS M FULL DEPTH PATCH - 111B00055N	6.00	CUYD		\$	
0530	08534		CONCRETE OVERLAY-LATEX - 111B00055N	25.00	CUYD		\$	
0540	08549		BLAST CLEANING - 111B00055N	780.00	SQYD		\$	
0550	08551		MACHINE PREP OF SLAB - 111B00055N	599.00	SQYD		\$	
0560	24094EC		PARTIAL DEPTH PATCHING - 111B00055N	6.00	CUYD		\$	
0570	24692EC		DECK DRAIN RETROFIT - 111B00055N TYPE A	12.00	EACH		\$	
0580	24692EC		DECK DRAIN RETROFIT - 111B00055N TYPE B	4.00	EACH		\$	
0590	24692EC		DECK DRAIN RETROFIT - 111B00055N TYPE C	8.00	EACH		\$	
0600	24981EC		BRIDGE CLEANING - 111B00055N	1.00	LS		\$	
0610	24982EC		CONCRETE COATING - 111B00055N	1.00	LS		\$	
0620	24983EC		BEARING LUBRICATION - 111B00055N	8.00	EACH		\$	

**Section: 0004 - DEMOB**

LINE	BID CODE	ALT	DESCRIPTION	QUANTITY	UNIT	UNIT PRIC	FP	AMOUNT
0630	02569		DEMOBILIZATION	1.00	LS		\$	