



CALL NO. 310

CONTRACT ID. 131222

WOODFORD COUNTY

FED/STATE PROJECT NUMBER FD04 SPP 120 0169 002-004

DESCRIPTION PINCKARD PIKE (KY-169)

WORK TYPE GRADE & DRAIN WITH ASPHALT SURFACE

PRIMARY COMPLETION DATE 12/31/2014

LETTING DATE: December 13,2013

Sealed Bids will be received electronically through the Bid Express bidding service until 10:00 AM EASTERN STANDARD TIME December 13,2013. Bids will be publicly announced at 10:00 AM EASTERN STANDARD TIME.

PLANS AVAILABLE FOR THIS PROJECT.

REQUIRED BID PROPOSAL GUARANTY: Not less than 5% of the total bid.

TABLE OF CONTENTS

| | |
|----------|---|
| PART I | SCOPE OF WORK |
| | <ul style="list-style-type: none">• PROJECT(S), COMPLETION DATE(S), & LIQUIDATED DAMAGES• CONTRACT NOTES• STATE CONTRACT NOTES• ASPHALT MIXTURE• INCIDENTAL SURFACING• FUEL AND ASPHALT PAY ADJUSTMENT• COMPACTION OPTION A• SPECIAL NOTE(S) APPLICABLE TO PROJECT• RIGHT OF WAY NOTES• UTILITY CLEARANCE• KPDES STORM WATER PERMIT, BMP AND NOI• COMMUNICATING ALL PROMISES |
| PART II | SPECIFICATIONS AND STANDARD DRAWINGS |
| | <ul style="list-style-type: none">• SPECIFICATIONS REFERENCE• SUPPLEMENTAL SPECIFICATION• TURF REINFORCEMENT MAT |
| PART III | EMPLOYMENT, WAGE AND RECORD REQUIREMENTS |
| | <ul style="list-style-type: none">• LABOR AND WAGE REQUIREMENTS• EXECUTIVE BRANCH CODE OF ETHICS• KENTUCKY EQUAL EMPLOYMENT OPPORTUNITY ACT OF 1978 LOCALITY 1,2,3,4 / STATE (OVER 250,000)• PROJECT WAGE RATES LOCALITY 3 / FEDERAL & STATE |
| PART IV | INSURANCE |
| PART V | BID ITEMS |

PART I
SCOPE OF WORK

ADMINISTRATIVE DISTRICT - 07

CONTRACT ID - 131222

FD04 SPP 120 0169 002-004

COUNTY - WOODFORD

PCN - DE12001691322

FD04 SPP 120 0169 002-004

PINCKARD PIKE (KY-169) (MP 2.90) IMPROVE SAFETY ON KY 169 NEAR BOYD'S ORCHARD ENTRANCE. (MP 3.08), A DISTANCE OF 0.39 MILES.GRADE & DRAIN WITH ASPHALT SURFACE SYP NO. 07-08701.00.
GEOGRAPHIC COORDINATES LATITUDE 37:59:52.00 LONGITUDE 84:42:06.00

COMPLETION DATE(S):

COMPLETED BY 12/31/2014

APPLIES TO ENTIRE CONTRACT

CONTRACT NOTES

PROPOSAL ADDENDA

All addenda to this proposal must be applied when calculating bid and certified in the bid packet submitted to the Kentucky Department of Highways. Failure to use the correct and most recent addenda may result in the bid being rejected.

BID SUBMITTAL

Bidder must use the Department's Expedite Bidding Program available on the Internet web site of the Department of Highways, Division of Construction Procurement. (www.transportation.ky.gov/construction-procurement)

The Bidder must download the bid file located on the Bid Express website (www.bidx.com) to prepare a bid packet for submission to the Department. The bidder must submit electronically using Bid Express.

JOINT VENTURE BIDDING

Joint venture bidding is permissible. All companies in the joint venture must be prequalified in one of the work types in the Qualifications for Bidders for the project. The bidders must get a vendor ID for the joint venture from the Division of Construction Procurement and register the joint venture as a bidder on the project. Also, the joint venture must obtain a digital ID from Bid Express to submit a bid. A joint bid bond of 5% may be submitted for both companies or each company may submit a separate bond of 5%.

UNDERGROUND FACILITY DAMAGE PROTECTION

The contractor is advised that the Underground Facility Damage Protection Act of 1994, became law January 1, 1995. It is the contractor's responsibility to determine the impact of the act regarding this project, and take all steps necessary to be in compliance with the provision of the act.

SPECIAL NOTE FOR PIPE INSPECTION

Contrary to Section 701.03.08 of the 2012 Standard Specifications for Road and Bridge Construction and Kentucky Method 64-114, certification by the Kentucky Transportation Center for prequalified Contractors to perform laser/video inspection is not required on this contract. It will continue to be a requirement for the Contractor performing any laser/video pipe inspection to be prequalified for this specialized item with the Kentucky Transportation Cabinet-Division of Construction Procurement.

REGISTRATION WITH THE SECRETARY OF STATE BY A FOREIGN ENTITY

Pursuant to KRS 176.085(1)(b), an agency, department, office, or political subdivision of the Commonwealth of Kentucky shall not award a state contract to a person that is a foreign entity required by [KRS 14A.9-010](#) to obtain a certificate of authority to transact business in the Commonwealth (“certificate”) from the Secretary of State under [KRS 14A.9-030](#) unless the person produces the certificate within fourteen (14) days of the bid or proposal opening. If the foreign entity is not required to obtain a certificate as provided in [KRS 14A.9-010](#), the foreign entity should identify the applicable exception. Foreign entity is defined within [KRS 14A.1-070](#).

For all foreign entities required to obtain a certificate of authority to transact business in the Commonwealth, if a copy of the certificate is not received by the contracting agency within the time frame identified above, the foreign entity’s solicitation response shall be deemed non-responsive or the awarded contract shall be cancelled.

Businesses can register with the Secretary of State at <https://secure.kentucky.gov/sos/ftbr/welcome.aspx>.

SPECIAL NOTE FOR PROJECT QUESTIONS DURING ADVERTISEMENT

Questions about projects during the advertisement should be submitted in writing to the Division of Construction Procurement. This may be done by fax (502) 564-7299 or email to kytc.projectquestions@ky.gov. The Department will attempt to answer all submitted questions. The Department reserves the right not to answer if the question is not pertinent or does not aid in clarifying the project intent.

The deadline for posting answers will be 3:00 pm Eastern Daylight Time, the day preceding the Letting. Questions may be submitted until this deadline with the understanding that the later a question is submitted, the less likely an answer will be able to be provided.

The questions and answers will be posted for each Letting under the heading “Questions & Answers” on the Construction Procurement website (www.transportation.ky.gov/contract). The answers provided shall be considered part of this Special Note and, in case of a discrepancy, will govern over all other bidding documents.

HARDWOOD REMOVAL RESTRICTIONS

The Kentucky Division of Forestry has imposed a quarantine in Anderson, Boone, Bourbon, Boyd, Boyle, Bracken, Campbell, Carroll, Fayette, Franklin, Gallatin, Garrard,

Grant, Greenup, Hardin, Harrison, Henry, Jefferson, Jessamine, Kenton, Oldham, Owen, Pendleton, Scott, Shelby, Trimble, and Woodford Counties to prevent the spread of an invasive insect, the emerald ash borer. Hardwood cut in conjunction with the project may not be removed from the county of its origin. Chipping or burning on site is the preferred method of disposal.

INSTRUCTIONS FOR EXCESS MATERIAL SITES AND BORROW SITES

Identification of excess material sites and borrow sites shall be the responsibility of the Contractor. The Contractor shall be responsible for compliance with all applicable state and federal laws and may wish to consult with the US Fish and Wildlife Service to seek protection under Section 10 of the Endangered Species Act for these activities.

ACCESS TO RECORDS

The contractor, as defined in KRS 45A.030 (9) agrees that the contracting agency, the Finance and Administration Cabinet, the Auditor of Public Accounts, and the Legislative Research Commission, or their duly authorized representatives, shall have access to any books, documents, papers, records, or other evidence, which are directly pertinent to this contract for the purpose of financial audit or program review. Records and other prequalification information confidentially disclosed as part of the bid process shall not be deemed as directly pertinent to the contract and shall be exempt from disclosure as provided in KRS 61.878(1)(c). The contractor also recognizes that any books, documents, papers, records, or other evidence, received during a financial audit or program review shall be subject to the Kentucky Open Records Act, KRS 61.870 to 61.884.

In the event of a dispute between the contractor and the contracting agency, Attorney General, or the Auditor of Public Accounts over documents that are eligible for production and review, the Finance and Administration Cabinet shall review the dispute and issue a determination, in accordance with Secretary's Order 11-004. (See attachment)

10/29/12



Steven L. Beshear
Governor

Commonwealth of Kentucky
Finance and Administration Cabinet
OFFICE OF THE SECRETARY
Room 383, Capitol Annex
702 Capital Avenue
Frankfort, KY 40601-3462
(502) 564-4240
Fax (502) 564-6785

Lori H. Flanery
Secretary

SECRETARY'S ORDER 11-004

FINANCE AND ADMINISTRATION CABINET

Vendor Document Disclosure

WHEREAS, in order to promote accountability and transparency in governmental operations, the Finance and Administration Cabinet believes that a mechanism should be created which would provide for review and assistance to an Executive Branch agency if said agency cannot obtain access to documents that it deems necessary to conduct a review of the records of a private vendor that holds a contract to provide goods and/or services to the Commonwealth; and

WHEREAS, in order to promote accountability and transparency in governmental operations, the Finance and Administration Cabinet believes that a mechanism should be created which would provide for review and assistance to an Executive Branch agency if said agency cannot obtain access to documents that it deems necessary during the course of an audit, investigation or any other inquiry by an Executive Branch agency that involves the review of documents; and

WHEREAS, KRS 42.014 and KRS 12.270 authorizes the Secretary of the Finance and Administration Cabinet to establish the internal organization and assignment of functions which are not established by statute relating to the Finance and Administration Cabinet; further, KRS Chapter 45A.050 and 45A.230 authorizes the Secretary of the Finance and Administration Cabinet to procure, manage and control all supplies and services that are procured by the Commonwealth and to intervene in controversies among vendors and state agencies; and

NOW, THEREFORE, pursuant to the authority vested in me by KRS 42.014, KRS 12.270, KRS 45A.050, and 45A.230, I, Lori H. Flanery, Secretary of the Finance and Administration Cabinet, do hereby order and direct the following:

- I. Upon the request of an Executive Branch agency, the Finance and Administration Cabinet ("FAC") shall formally review any dispute arising where the agency has requested documents from a private vendor that holds a state contract and the vendor has refused access to said documents under a claim that said documents are not directly pertinent or relevant to the agency's inquiry upon which the document request was predicated.
- II. Upon the request of an Executive Branch agency, the FAC shall formally review any situation where the agency has requested documents that the agency deems necessary to

conduct audits, investigations or any other formal inquiry where a dispute has arisen as to what documents are necessary to conclude the inquiry.

- III. Upon receipt of a request by a state agency pursuant to Sections I & II, the FAC shall consider the request from the Executive Branch agency and the position of the vendor or party opposing the disclosure of the documents, applying any and all relevant law to the facts and circumstances of the matter in controversy. After FAC's review is complete, FAC shall issue a Determination which sets out FAC's position as to what documents and/or records, if any, should be disclosed to the requesting agency. The Determination shall be issued within 30 days of receipt of the request from the agency. This time period may be extended for good cause.
- IV. If the Determination concludes that documents are being wrongfully withheld by the private vendor or other party opposing the disclosure from the state agency, the private vendor shall immediately comply with the FAC's Determination. Should the private vendor or other party refuse to comply with FAC's Determination, then the FAC, in concert with the requesting agency, shall effectuate any and all options that it possesses to obtain the documents in question, including, but not limited to, jointly initiating an action in the appropriate court for relief.
- V. Any provisions of any prior Order that conflicts with the provisions of this Order shall be deemed null and void.

SPECIAL NOTE FOR RECIPROCAL PREFERENCE

Reciprocal preference to be given by public agencies to resident bidders

By reference, KRS 45A.490 to 45A.494 are incorporated herein and in compliance regarding the bidders residency. Bidders who want to claim resident bidder status should complete the Affidavit for Claiming Resident Bidder Status along with their bid in the Expedite Bidding Program. Submittal of the Affidavit should be done along with the bid in Bid Express.

03/01/2011

ASPHALT MIXTURE

Unless otherwise noted, the Department estimates the rate of application for all asphalt mixtures to be 110 lbs/sy per inch of depth.

INCIDENTAL SURFACING

The Department has included in the quantities of asphalt mixtures established in the proposal estimated quantities required for resurfacing or surfacing mailbox turnouts, farm field entrances, residential and commercial entrances, curve widening, ramp gores and tapers, and road and street approaches, as applicable. Pave these areas to the limits as shown on Standard Drawing RPM-110-06 or as directed by the Engineer. In the event signal detectors are present in the intersecting streets or roads, pave the crossroads to the right of way limit or back of the signal detector, whichever is the farthest back of the mainline. Surface or resurface these areas as directed by the Engineer. The Department will not measure placing and compacting for separate payment but shall be incidental to the Contract unit price for the asphalt mixtures.

FUEL AND ASPHALT PAY ADJUSTMENT

The Department has included the Contract items Asphalt Adjustment and Fuel Adjustment for possible future payments at an established Contract unit price of \$1.00. The Department will calculate actual adjustment quantities after work is completed. If existing Contract amount is insufficient to pay all items on the contract with the adjustments, the Department will establish additional monies with a change order.

OPTION A

Be advised that the Department will accept compaction of asphalt mixtures furnished for driving lanes and ramps, at 1 inch (25mm) or greater, on this project according to OPTION A in accordance with Section 402 and Section 403 of the current Standard Specifications. The Department will require joint cores as described in Section 402.03.02 for surface mixtures only. The Department will accept compaction of all other asphalt mixtures according to OPTION B.

SPECIAL NOTE FOR DRY-LAID ROCK FENCES

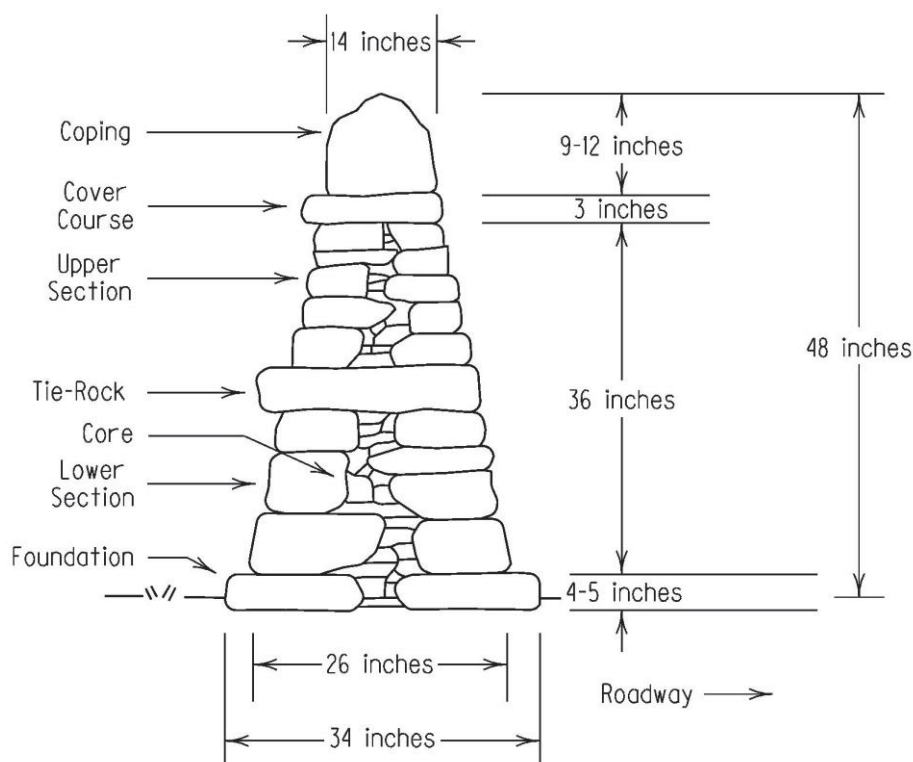
This Special Note will apply when indicated on the plans or in the proposal. Section references herein are to the Department's 2012 Standard Specifications for Road and Bridge Construction.

1.0 DESCRIPTION. Preparation and construction of dry-laid rock fences.

2.0 MATERIALS. Move, store, and supply the rock. When relocating or repairing existing fences, use the original rock whenever possible. Dismantle existing fences manually or by methods that do not contaminate the rock with soil. If there is no suitable rock available for various wall components (i.e.; wallhead, tie rocks, etc.) then the engineer may deem it necessary to acquire additional rock from an acceptable source.

3.0 CONSTRUCTION. Lay out the fence line in advance to provide continuity in its appearance. Construct in close conformance to Figure 1. If the height of the fence differs from Figure 1, maintain a 1:6 batter.

Figure 1



3.1 Subgrade. Level and compact the subgrade. Remove all organic matter.

3.2 Foundation. Place foundation stones so their upper surfaces are level and lower surfaces are fully supported by the subgrade or through stone underpinning.

Underpinning from the front is unacceptable. Assure that more than half of the width of each foundation stone extends under the lower course.

3.3 Core. Use large stone when practical and continue with smaller stone until all gaps are filled. Interlock stones as much as possible.

3.4 Lower Course. Use the larger face stone on the lower course. Place so joints are overlapped. Point the long side of the stone in whenever possible. Fully support all face stones. Build one layer at a time, pack and level the core simultaneously. Level the lower course at 18 inches above the foundation for the tie rocks.

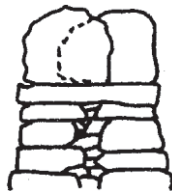
3.5 Tie Rocks. Place on 36-inches centers. Overlap lower course joints whenever possible. Use single stones that overhang the leveled lower course by 2 to 4 inches on the side of the fence opposite the roadway. The rock on roadway side should be flush with face of the fence. Fully support all tie rocks.

3.6 Upper Coarse. Continue to place face stones around and over the tie rocks as on the lower course. Level the upper course at 3 feet above the foundation for the cover course.

3.7 Cover Course. Use single stones that overhang the leveled upper course by 2 to 3 inches on the side of the fence opposite the roadway. On the roadway side, the Cover Course should be flush with face of the fence. Fully support all cover stones.

3.8 Coping. Place a single cope on top of the cover course. Use stones that do not overhang the cover course. Angle the cope stones at 15 degrees sloping downhill. Keep the top surface of the cope at a leveled height between 9 and 12 inches. Drive in stone pins to level and lock in the cope. If requested by the landowner, the Engineer may require a double cope (figure 2). If a double cope is used, widen the fence from the foundation up to accommodate.

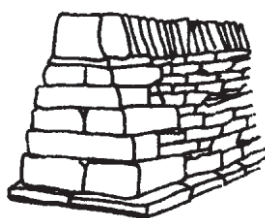
Figure 2



3.9 Pinning. Pin only when support is needed, not for appearance. Avoid using multiple pins, use one stone for one hole.

3.10 Wallheads. End fences with flush vertical wallheads using large stone for stability. Construct in close conformance to Figure 3.

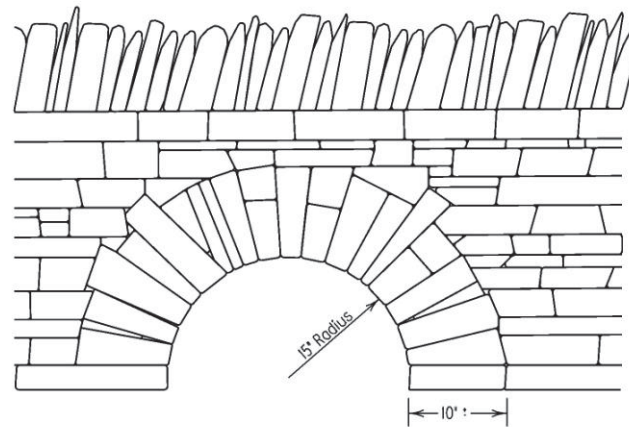
Figure 3



3.11 Batter. If the existing wall does not have any apparent batter, or does not match Figure 1, then transition the fence to match the dimensions shown in Figure 1.

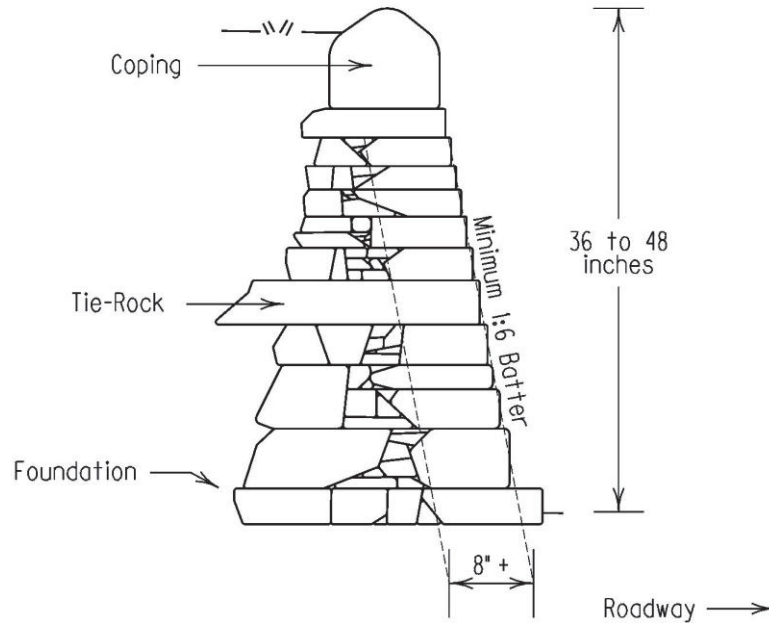
3.12 Culvert. Build arch culvert at locations shown on Plans. Construct in close conformance to Figure 4. Construction of Culverts is incidental to bid item Dry-Laid Rock Fence.

Figure 4



3.13 Retaining Walls. Construct Dry-Laid Retaining Walls at locations as shown in the Plans. Unless noted in the Plans, construct retaining wall to a height of 48 inches to close conformance to figure 5. Face rocks should run into the wall a minimum of 8". Upright Coping should be used, but a heavy flat cap course can be used with the approval of the Engineer. Tie-Rocks will not be required for retaining walls less than 36" tall. For Retaining walls between 48" and 60" tall, two rows of Tie-Rocks will be required and the wall will be required to have a 1:5 batter. Unless noted differently in the plans, construction of Retaining Walls will be paid as Dry-Laid Rock Fence.

Figure 5



4.0 QUALITY ASSURANCE. The workmanship shall be of high quality, as recognized by the KYTC, Dry Stone Conservancy, Inc. (DSC), and dry stone industry standards. Poor or inferior workmanship (as determined by the engineer) is to be removed, replaced and corrected to conform to the standards of the dry-laid stone masonry trade. All dry stone masonry work will be accomplished under the direct supervision of a mason qualified under the DSC Basic Drystone Mason, Level 1 ranking. DSC Basic Drystone Mason shall have at least two years experience, run their own business and train apprentices.

5.0 MEASUREMENT. The Department will measure the quantity of dry-laid rock fence in linear feet.

6.0 PAYMENT. The Department will make payment for the completed and accepted quantities under the following:

| <u>Code</u> | <u>Pay Item</u> | <u>Pay Unit</u> |
|-------------|--|-----------------|
| 24491ED | Drylaid Rock Fence Dismantle and Stockpile | Linear Feet |
| 20063EN9T | Dry-laid Rock Fence | Linear Feet |

The Department will consider payment as full compensation for all work required in this provision.

7-8701.00
SPECIAL NOTE
FOR
COMPLETION DATE

Project Fixed Completion Date

This project shall have a fixed completion date of **December 31, 2014** for the completion of **all** work associated with this project and milestone completion date of **September 1, 2014** to open the new roadway to traffic. Liquidated damages shall be assessed according to Section 108 of the 2012 Kentucky Standard Specifications for Road and Bridge Construction. Contrary to Section 108 of the 2012 Kentucky Standard Specifications for Road and Bridge Construction, contract extensions associated with this project may only be adjusted at the discretion of the Engineer. Every day past **June 1, 2014** that a utility facility is in conflict with construction an additional day will be added to the fixed completion date and the milestone completion date for opening the new roadway to traffic until the utility facility is no longer in conflict. If there are still utility conflicts on **September 1, 2014**, the milestone complete date for opening new roadway will no longer apply.

Right-of-Way Certification Form

Revised 2/22/11

Federal Funded

Original

State Funded

Re-Certification

This form must be completed and submitted to FHWA with the PS&E package for federal-aid funded Interstate, Appalachia, and Major projects. This form shall also be submitted to FHWA for all federal-aid projects that fall under Conditions No. 2 or 3 outlined elsewhere in this form. When Condition No. 2 or 3 apply, KYTC shall resubmit this ROW Certification prior to construction contract Award. For all other federal-aid projects, this form shall be completed and retained in the KYTC project file.

Date: 11/08/13

Project Name: Curve Revision at Boyds Orchard

Letting Date: 12/13/2013

Project #: fd04 ci20 8676701r

County: Woodford

Item #: 7-8701.00

Federal #: _____

Description of Project: Curve Revision at Boyd's Orchard

Projects that require **NO** new or additional right-of-way acquisitions and/or relocations

- The proposed transportation improvement will be built within the existing rights-of-way and there are no properties to be acquired, individuals, families, and businesses ("relocatees") to be relocated, or improvements to be removed as a part of this project.

Projects that require new or additional right-of-way acquisitions and/or relocations

- Per 23 CFR 635.309, the KYTC hereby certify that all relocatees have been relocated to decent, safe, and sanitary housing or that KYTC has made available to relocatees adequate replacement housing in accordance with the provisions of the current FHWA directive(s) covering the administration of the Highway Relocation Assistance Program and that at least one of the following three conditions has been met. (Check those that apply.)

Condition 1. All necessary rights-of-way, including control of access rights when applicable, have been acquired including legal and physical possession. Trial or appeal of cases may be pending in court but legal possession has been obtained. There may be some improvements remaining on the right-of-way, but all occupants have vacated the lands and improvements, and KYTC has physical possession and the rights to remove, salvage, or demolish all improvements and enter on all land. Fair market value has been paid or deposited with the court.

Condition 2. Although all necessary rights-of-way have not been fully acquired, the right to occupy and to use all rights-of-way required for the proper execution of the project has been acquired. Trial or appeal of some parcels may be pending in court and on other parcels full legal possession has not been obtained, but right of entry has been obtained, the occupants of all lands and improvements have vacated, and KYTC has physical possession and right to remove, salvage, or demolish all improvements. Fair market value has been paid or deposited with the court for most parcels. Fair market value for all pending parcels will be paid or deposited with the court prior to AWARD of construction contract. (See note 1 below.)

Note 1: The KYTC shall re-submit a right-of-way certification form for this project prior to AWARD of all Federal-Aid construction contracts. Award must not to be made until after KYTC has obtained full legal possession and fair market value for all parcels has been paid or deposited with the court and FHWA has concurred in the re-submitted right-of-way certification.

Right-of-Way Certification Form

Revised 2/22/11

Condition 3. The acquisition or right of occupancy and use of a few remaining parcels are not complete and/or some parcels still have occupants. However, all remaining occupants have had replacement housing made available to them in accordance with 49 CFR 24.204. The KYTC is hereby requesting authorization to advertise this project for bids and to proceed with bid letting even though the necessary rights-of-way will not be fully acquired, and/or some occupants will not be relocated, and/or the fair market value will not be paid or deposited with the court for some parcels until after bid letting. KYTC will fully meet all the requirements outlined in 23 CFR 635.309(c)(3) and 49 CFR 24.102(j) and will expedite completion of all acquisitions, relocations, and full payments after bid letting and prior to AWARD of the construction contract or force account construction. A full explanation and reason for this request, including identification of each such parcel and dates on which acquisitions, payments, and relocations will be completed, is attached to this certification form for FHWA concurrence. (See note 2.)

Note 2: The KYTC may request authorization on this basis only in unique and unusual circumstances. Proceeding to bid letting shall be the exception and never become the rule. In all cases, the KYTC shall make extraordinary efforts to expedite completion of the acquisition, payment for all affected parcels, and the relocation of all relocatees prior to AWARD of all Federal-Aid construction contracts or force account construction.

Approved: Robert W. Nunley Bob Nunley by KMc Right-of-Way Supervisor
Printed Name Signature

Approved: Keith McDonald KLMcD KYTC, Director of ROW & Utilities
Printed Name Signature

Approved: _____ FHWA, ROW Officer (when applicable)
Printed Name Signature

Right-of-Way Certification Form

Revised 2/22/11

Date: 11/08/13

Project Name: Curve Revision at Ky 169

Project #: FD04 C120 8676701R

County: Woodford

Item #: 07-8701.00

Federal #: _____

Letting Date: 12/13/2013

This project has 8 total number of parcels to be acquired, and 0 total number of individuals or families to be relocated, as well as 0 total number of businesses to be relocated.

7 Parcels where acquired by a signed fee simple deed and fair market value has been paid

_____ Parcels have been acquired by IOJ through condemnation and fair market value has been deposited with the court

_____ Parcels have not been acquired at this time (*explain below for each parcel*)

1 Parcels have been acquired or have a "right of entry" but fair market value has not been paid or has not been deposited with the court (*explain below for each parcel*)

_____ Relocatees have not been relocated from parcels _____, _____, _____, _____, _____, _____, and _____ (*explain below for each parcel*)

| Parcel # | Name/Station | Explanation for delayed acquisition, delayed relocation, or delayed payment of fair market value | Proposed date of payment or of relocation |
|----------|--------------|--|---|
| 004 | Hatton | Owner signed deed waiting on mortgage release | 12/02/13 |
| | | | |
| | | | |
| | | | |
| | | | |
| | | | |
| | | | |

There are 0 billboards and/or 0 cemeteries involved on this project.

There are 0 water or monitoring wells on parcels _____, _____, _____, _____, and _____. All have been acquired and are the responsibility of the project contractor to close/cap.

Form Effective Date: April 1, 2006
Last Revised: February 22, 2011

SPECIAL NOTES FOR UTILITY CLEARANCE IMPACT ON CONSTRUCTION

WOODFORD COUNTY
FD04 120 86767
PINCKARD PIKE (KY-169)
SAFETY IMPROVEMENT NEAR BOYD ORCHARDS ENTRANCE
7-8701.00

GENERAL PROJECT NOTE ON UTILITY PROTECTION

Utility relocations have not yet begun on this project. The full extent of the necessary Utility relocation work will not be known until the Utility Companies have submitted their relocation plan and estimate. It is unknown if the highway contractor will have productive work available through the project, that is for the highway contractor to determine. The highway contractor should not anticipate that any utility relocation work will be complete before the letting, or before the award of the contract; consequently, the highway contractor should prepare the construction schedule accordingly.

NOTE: DO NOT DISTURB THE FOLLOWING UTILITIES LOCATED WITHIN THE PROJECT DISTURB LIMITS

KENTUCKY UTILITIES COMPANY – DISTRIBUTION – The company currently has an aerial facility located along the north side of the project from the beginning of the project to approximate station 11+00, where it has crossed to the south side of the project. From which it continues along the south side of the project, as a combination pole route with the telephone company facilities, through the end of the project.

SOUTH WOODFORD WATER DISTRICT – The company currently has a six-inch water main facility located south of the existing roadway, and generally south of the existing rock walls, throughout the project, with several service crossings for customers located north of the existing roadway.

WINDSTREAM – The company currently has an aerial facility with poles located along the south side of the project from the beginning of the project through the end of the project.

The Contractor is fully responsible for protection of all utilities listed above

THE FOLLOWING COMPANIES ARE RELOCATING/ADJUSTING THEIR UTILITIES WITHIN THE PROJECT LIMITS AND WILL BE COMPLETE PRIOR TO CONSTRUCTION

It is not anticipated that any of the utility facilities will be relocated prior to the commencement of construction activities

SPECIAL NOTES FOR UTILITY CLEARANCE IMPACT ON CONSTRUCTION

WOODFORD COUNTY
FD04 120 86767
PINCKARD PIKE (KY-169)
SAFETY IMPROVEMENT NEAR BOYD ORCHARDS ENTRANCE
7-8701.00

)

THE FOLLOWING COMPANIES HAVE FACILITIES TO BE RELOCATED/ADJUSTED BY THE COMPANY OR THE COMPANY'S SUBCONTRACTOR AND IS TO BE COORDINATED WITH THE ROAD CONTRACT

KENTUCKY UTILITIES COMPANY – DISTRIBUTION - The company currently has an aerial facility located along the north side of the project from the beginning of the project to approximate station 11+00, where it has crossed to the south side of the project. From which it continues along the south side of the project, as a combination pole route with the telephone company facilities, through the end of the project. The company's current plan is to attach to Windstream's newly placed poles on newly acquired easement south of the Cabinet's proposed right-of-way through the project, with the anticipation of two additional poles placed north of the proposed roadway. The company has estimated approximately thirty days to complete the relocation after Windstream's poles have been placed; however, they have also stated that they expect to be complete by April 1, 2014. Although, weather in the area, and through-out the region may cause unexpected delays.

SOUTH WOODFORD WATER DISTRICT - The company currently has a six-inch water main facility located south of the existing roadway, and generally south of the existing rock walls, throughout the project, with several service crossings for customers located north of the existing roadway. The company's relocation proposal is to install a new six-inch water main south of the proposed rock wall construction, and outside of the Cabinet's proposed right-of-way, within newly acquired easements. The company has estimated approximately thirty-five working days to complete their relocation work; however, a beginning date has not been established. The company is currently awaiting the return of the easement documents prior to advertising for bids; however, it is anticipated that work will begin prior to February 2014. Consequently, a completion date has been assigned to the company of April 1, 2014. Although, weather in the area, and through-out the region may cause unexpected delays.

WINDSTREAM - The company currently has an aerial facility with poles located along the south side of the project from the beginning of the project through the end of the project. The company's current plan is to place new poles on newly acquired easement south of the Cabinet's proposed right-of-way through the project. The company has estimated approximately two months to complete the relocation; however, no beginning date has yet been established. It is anticipated that the company's relocation plan and estimate will be delivered to the District office on or about December 6, 2013. Consequently, the company's relocation agreement should be returned for signature on or about

SPECIAL NOTES FOR UTILITY CLEARANCE IMPACT ON CONSTRUCTION

WOODFORD COUNTY
FD04 120 86767
PINCKARD PIKE (KY-169)
SAFETY IMPROVEMENT NEAR BOYD ORCHARDS ENTRANCE
7-8701.00

December 20, 2013, with anticipated execution by the Cabinet approximately mid-January 2014.

Therefore, the company has been assigned a completion date of April 1, 2014. Although, weather in the area, and through-out the region may cause unexpected delays.

The Department will consider submission of a bid as the Contractor's agreement to not make any claims for additional compensation due to delays or other conditions created by the operations of the Utility Companies. Working days will not be charged for those days on which work on the Utility facilities is delayed, as provided in the current edition of the KY Standard Specifications for Road and Bridge Construction. Should a difference of opinion arise as to the rights of the Contractor and others working within the limits of, or adjacent to the project, the KYTC Resident Engineer will decide as to the respective rights of the various parties involved in order to assure the completion of the Department's work in general harmony and in a satisfactory manner, and his decision shall be final and binding upon the Contractor. .

THE FOLLOWING COMPANIES HAVE FACILITIES TO BE RELOCATED/ADJUSTED BY THE ROAD
CONTRACTOR AS INCLUDED IN THIS CONTRACT

NONE.

SPECIAL NOTES FOR UTILITY CLEARANCE IMPACT ON CONSTRUCTION

| |
|---|
| <p>WOODFORD COUNTY FD04 120 86767 PINCKARD PIKE (KY-169) SAFETY IMPROVEMENT NEAR BOYD ORCHARDS ENTRANCE 7-8701.00</p> |
|---|

SPECIAL CAUTION NOTE – PROTECTION OF UTILITIES

The contractor will be responsible for contacting all utility facility owners on the subject project to coordinate his activities. The contractor will coordinate his activities to minimize and, where possible, avoid conflicts with utility facilities. Due to the nature of the work proposed, it is unlikely to conflict with the existing utilities beyond minor facility adjustments. Where conflicts with utility facilities are unavoidable, the contractor will coordinate any necessary relocation work with the facility owner and Resident Engineer. The Kentucky Transportation Cabinet maintains the right to remove or alter portions of this contract if a utility conflict occurs.

The utility facilities as noted in the previous section(s) have been determined using data garnered by varied means and with varying degrees of accuracy: from the facility owners, a result of S.U.E., field inspections, and/or reviews of record drawings. The facilities defined may not be inclusive of all utilities in the project scope and are not Level A quality, unless specified as such. It is the contractor's responsibility to verify all utilities and their respective locations before excavating.

BEFORE YOU DIG

The contractor is instructed to call 1-800-752-6007 to reach KY 811, the one-call system for information on the location of existing underground utilities. The call is to be placed a minimum of two (2) and no more than ten (10) business days prior to excavation. The contractor should be aware that owners of underground facilities are not required to be members of the KY 811 one-call Before-U-Dig (BUD) service. The contractor must coordinate excavation with the utility owners, including those whom do not subscribe to KY 811. It may be necessary for the contractor to contact the County Court Clerk to determine what utility companies have facilities in the area.

Please Note: The information presented in this Utility Note is informational in nature and the information contained herein is not guaranteed.

[]

KyTC BMP Plan for Project PCN ## - #####



Kentucky Transportation Cabinet

Highway District Seven

And

_____ **(2), Construction**

Kentucky Pollutant Discharge Elimination System

Permit KYR10

Best Management Practices (BMP) plan

Groundwater protection plan

For Highway Construction Activities

For

Woodford County

KY 169 ~ Pinckard Pike

Project: PCN ## - #####

KyTC BMP Plan for Project PCN ## -

Project information

Note – (1) = Design (2) = Construction (3) = Contractor

1. Owner – Kentucky Transportation Cabinet, District Seven
2. Resident Engineer: (2)
3. Contractor name: (2)
Address: (2)

Phone number: (2)
Contact: (2)
Contractors agent responsible for compliance with the KPDES permit requirements (3):
4. Project Control Number (2)
5. Route: KY 169 ~ Pinckard Pike
6. Latitude/Longitude 37/59/52 North, 84/42/06 West
7. County: Woodford
8. Project start date (date work will begin): (2)
9. Projected completion date: (2)

KyTC BMP Plan for Project PCN ## -

A. Site description:

1. Nature of Construction Activity: Reconstruct KY 169 (Pinckard Pike) near the Boyd's Orchard entrance between MP 2.9 and 3.3
2. Order of major soil disturbing activities (2) and (3)
3. Projected volume of material to be moved: 21,453 Excavation & 2,122 Embankment
4. Estimate of total project area: 5.76 acres
5. Estimate of area to be disturbed: 5.76 acres
6. Post construction runoff coefficient will be included in the project drainage folder. Persons needing information pertaining to the runoff coefficient will contact the resident engineer to request this information.(1)
7. Data describing existing soil condition (1) & (2)
8. Data describing existing discharge water quality (if any) (1) & (2)
9. Receiving water name: Clear Creek
10. TMDLs and Pollutants of Concern in Receiving Waters: (1 DEA)
11. Site map – Project layout sheet plus the erosion control sheets in the project plans that depict Disturbed Drainage Areas (DDAs) and related information. These sheets depict the existing project conditions with areas delineated by DDA (drainage area bounded by watershed breaks and right of way limits), the storm water discharge locations (either as a point discharge or as overland flow) and the areas that drain to each discharge point. These plans define the limits of areas to be disturbed and the location of control measures. Controls will be either site specific as designated by the designer or will be annotated by the contractor and resident engineer before disturbance commences. The project layout sheet shows the surface waters and wetlands.

KyTC BMP Plan for Project PCN ## -

12. Potential sources of pollutants:

The primary source of pollutants is solids that are mobilized during storm events. Other sources of pollutants include oil/fuel/grease from servicing and operating construction equipment, concrete washout water, sanitary wastes and trash/debris. (3)

B. Sediment and Erosion Control Measures:

1. Plans for highway construction projects will include erosion control sheets that depict Disturbed Drainage Areas (DDAs) and related information. These plan sheets will show the existing project conditions with areas delineated by DDA within the right of way limits, the discharge points and the areas that drain to each discharge point. Project managers and designers will analyze the DDAs and identify Best Management Practices (BMPs) that are site specific. The balance of the BMPs for the project will be listed in the bid documents for selection and use by the contractor on the project with approval by the resident engineer.

Projects that do not have DDAs annotated on the erosion control sheets will employ the same concepts for development and managing BMP plans.

2. Following award of the contract, the contractor and resident engineer will annotate the erosion control sheets showing location and type of BMPs for each of the DDAs that will be disturbed at the outset of the project. This annotation will be accompanied by an order of work that reflects the order or sequence of major soil moving activities. The remaining DDAs are to be designated as "Do Not Disturb" until the contractor and resident engineer prepare the plan for BMPs to be employed. The initial BMP's shall be for the first phase (generally Clearing and Grubbing) and shall be modified as needed as the project changes phases. The BMP Plan will be modified to reflect disturbance in additional DDA's as the work progresses. All DDA's will have adequate BMP's in place before being disturbed.
3. As DDAs are prepared for construction, the following will be addressed for the project as a whole or for each DDA as appropriate:
 - Ø Construction Access – This is the first land-disturbing activity. As soon as construction begins, bare areas will be stabilized with gravel and temporary mulch and/or vegetation.

KyTC BMP Plan for Project PCN ## -

- ∅ At the beginning of the project, all DDAs for the project will be inspected for areas that are a source of storm water pollutants. Areas that are a source of pollutants will receive appropriate cover or BMPs to arrest the introduction of pollutants into storm water. Areas that have not been opened by the contractor will be inspected periodically (once per month) to determine if there is a need to employ BMPs to keep pollutants from entering storm water.
- ∅ Clearing and Grubbing – The following BMP's will be considered and used where appropriate.
 - Leaving areas undisturbed when possible.
 - Silt basins to provide silt volume for large areas.
 - Silt Traps Type A for small areas.
 - Silt Traps Type C in front of existing and drop inlets which are to be saved
 - Diversion ditches to catch sheet runoff and carry it to basins or traps or to divert it around areas to be disturbed.
 - Brush and/or other barriers to slow and/or divert runoff.
 - Silt fences to catch sheet runoff on short slopes. For longer slopes, multiple rows of silt fence may be considered.
 - Temporary Mulch for areas which are not feasible for the fore mentioned types of protections.
 - Non-standard or innovative methods.
- ∅ Cut & Fill and placement of drainage structures - The BMP Plan will be modified to show additional BMP's such as:
 - Silt Traps Type B in ditches and/or drainways as they are completed
 - Silt Traps Type C in front of pipes after they are placed
 - Channel Lining
 - Erosion Control Blanket
 - Temporary mulch and/or seeding for areas where construction activities will be ceased for 21 days or more.
 - Non-standard or innovative methods
- ∅ Profile and X-Section in place – The BMP Plan will be modified to show elimination of BMP's which had to be removed and the addition of new BMP's as the roadway was shaped. Probably changes include:
 - Silt Trap Type A, Brush and/or other barriers, Temporary Mulch, and any other BMP which had to be removed for final grading to take place.
 - Additional Silt Traps Type B and Type C to be placed as final drainage patterns are put in place.
 - Additional Channel Lining and/or Erosion Control Blanket.
 - Temporary Mulch for areas where Permanent Seeding and Protection cannot be done within 21 days.
 - Special BMP's such as Karst Policy

KyTC BMP Plan for Project PCN ## -

- Ø Finish Work (Paving, Seeding, Protect, etc.) – A final BMP Plan will result from modifications during this phase of construction. Probably changes include:
 - Removal of Silt Traps Type B from ditches and drainways if they are protected with other BMP's which are sufficient to control erosion, i.e. Erosion Control Blanket or Permanent Seeding and Protection on moderate grades.
 - Permanent Seeding and Protection
 - Placing Sod
 - Planting trees and/or shrubs where they are included in the project
- Ø BMP's including Storm Water Management Devices such as velocity dissipation devices and Karst policy BMP's to be installed during construction to control the pollutants in storm water discharges that will occur after construction has been completed are: None (1)

C. Other Control Measures

1. No solid materials, including building materials, shall be discharged to waters of the commonwealth, except as authorized by a Section 404 permit.
2. Waste Materials

All waste materials that may leach pollutants (paint and paint containers, caulk tubes, oil/grease containers, liquids of any kind, soluble materials, etc.) will be collected and stored in appropriate covered waste containers. Waste containers shall be removed from the project site on a sufficiently frequent basis as to not allow wastes to become a source of pollution. All personnel will be instructed regarding the correct procedure for waste disposal. Wastes will be disposed in accordance with appropriate regulations. Notices stating these practices will be posted in the office.

3. Hazardous Waste

All hazardous waste materials will be managed and disposed of in the manner specified by local or state regulation. The contractor shall notify the Resident Engineer if there any hazardous wastes being generated at the project site and how these wastes are being managed. Site personnel will be instructed with regard to proper storage and handling of hazardous wastes when required. The Transportation Cabinet will file for generator, registration when appropriate, with the Division of Waste Management and advise the contractor regarding waste management requirements.

KyTC BMP Plan for Project PCN ## -

4. Spill Prevention

The following material management practices will be used to reduce the risk of spills or other exposure of materials and substances to the weather and/or runoff.

Ø **Good Housekeeping:**

The following good housekeeping practices will be followed onsite during the construction project.

- An effort will be made to store only enough product required to do the job
- All materials stored onsite will be stored in a neat, orderly manner in their appropriate containers and, if possible, under a roof or other enclosure
- Products will be kept in their original containers with the original manufacturer's label
- Substances will not be mixed with one another unless recommended by the manufacturer
- Whenever possible, all of the product will be used up before disposing of the container
- Manufacturers' recommendations for proper use and disposal will be followed
- The site contractor will inspect daily to ensure proper use and disposal of materials onsite

Ø **Hazardous Products:**

These practices will be used to reduce the risks associated with any and all hazardous materials.

- Products will be kept in original containers unless they are not resealable
- Original labels and material safety data sheets (MSDS) will be reviewed and retained
- Contractor will follow procedures recommended by the manufacturer when handling hazardous materials
- If surplus product must be disposed of, manufacturers' or state/local recommended methods for proper disposal will be followed

KyTC BMP Plan for Project PCN ## -

The following product-specific practices will be followed onsite:

Ø Petroleum Products:

Vehicles and equipment that are fueled and maintained on site will be monitored for leaks, and receive regular preventative maintenance to reduce the chance of leakage. Petroleum products onsite will be stored in tightly sealed containers, which are clearly labeled and will be protected from exposure to weather.

The contractor shall prepare an Oil Pollution Spill Prevention Control and Countermeasure plan when the project that involves the storage of petroleum products in 55 gallon or larger containers with a total combined storage capacity of 1,320 gallons. This is a requirement of 40 CFR 112.

This project (will / will not) (3) have over 1,320 gallons of petroleum products with a total capacity, sum of all containers 55 gallon capacity and larger.

Ø Fertilizers:

Fertilizers will be applied at rates prescribed by the contract, standard specifications or as directed by the resident engineer. Once applied, fertilizer will be covered with mulch or blankets or worked into the soil to limit exposure to storm water. Storage will be in a covered shed. The contents of any partially used bags of fertilizer will be transferred to a sealable plastic bin to avoid spills.

Ø Paints:

All containers will be tightly sealed and stored indoors or under roof when not being used. Excess paint or paint wash water will not be discharged to the drainage or storm sewer system but will be properly disposed of according to manufacturers' instructions or state and local regulations.

Ø Concrete Truck Washout:

Concrete truck mixers and chutes will not be washed on pavement, near storm drain inlets, or within 75 feet of any ditch, stream, wetland, lake, or sinkhole. Where possible, excess concrete and wash water will be discharged to areas prepared for pouring new concrete, flat areas to be paved that are away from ditches or drainage system features, or other locations that will not drain off site. Where this approach is not possible, a shallow earthen wash basin will be excavated away from ditches to receive the wash water

KyTC BMP Plan for Project PCN ## -

Ø **Spill Control Practices**

In addition to the good housekeeping and material management practices discussed in the previous sections of this plan, the following practices will be followed for spill prevention and cleanup:

- Manufacturers' recommended methods for spill cleanup will be clearly posted. All personnel will be made aware of procedures and the location of the information and cleanup supplies.
- Materials and equipment necessary for spill cleanup will be kept in the material storage area. Equipment and materials will include as appropriate, brooms, dust pans, mops, rags, gloves, oil absorbents, sand, sawdust, and plastic and metal trash containers.
- All spills will be cleaned up immediately after discovery.
- The spill area will be kept well ventilated and personnel will wear appropriate protective clothing to prevent injury from contact with a hazardous substance.
- Spills of toxic or hazardous material will be reported to the appropriate state/local agency as required by KRS 224 and applicable federal law.
- The spill prevention plan will be adjusted as needed to prevent spills from reoccurring and improve spill response and cleanup.
- Spills of products will be cleaned up promptly. Wastes from spill clean up will be disposed in accordance with appropriate regulations.

D. Other State and Local Plans

This BMP plan shall include any requirements specified in sediment and erosion control plans, storm water management plans or permits that have been approved by other state or local officials. Upon submittal of the NOI, other requirements for surface water protection are incorporated by reference into and are enforceable under this permit (even if they are not specifically included in this BMP plan). This provision does not apply to master or comprehensive plans, non-enforceable guidelines or technical guidance documents that are not identified in a specific plan or permit issued for the construction site by state or local officials. (1)

KyTC BMP Plan for Project PCN ## -

E. Maintenance

1. The BMP plan shall include a clear description of the maintenance procedures necessary to keep the control measures in good and effective operating condition.
- Maintenance of BMPs during construction shall be a result of weekly and post rain event inspections with action being taken by the contractor to correct deficiencies.
 - Post Construction maintenance will be a function of normal highway maintenance operations. Following final project acceptance by the cabinet, district highway crews will be responsible for identification and correction of deficiencies regarding ground cover and cleaning of storm water BMPs. The project manager shall identify any BMPs that will be for the purpose of post construction storm water management with specific guidance for any non-routine maintenance. (1)

F. Inspections

Inspection and maintenance practices that will be used to maintain erosion and sediment controls:

- Ø All erosion prevention and sediment control measures will be inspected at least once each week and following any rain of one-half inch or more.
- Ø Inspections will be conducted by individuals that have received KyTC Grade Level II training or other qualification as prescribed by the cabinet that includes instruction concerning sediment and erosion control.
- Ø Inspection reports will be written, signed, dated, and kept on file.
- Ø Areas at final grade will be seeded and mulched within 14 days.
- Ø Areas that are not at final grade where construction has ceased for a period of 21 days or longer and soil stock piles shall receive temporary mulch no later than 14 days from the last construction activity in that area.
- Ø All measures will be maintained in good working order; if a repair is necessary, it will be initiated within 24 hours of being reported.
- Ø Built-up sediment will be removed from behind the silt fence before it has reached halfway up the height of the fence.
- Ø Silt fences will be inspected for bypassing, overtopping, undercutting, depth of sediment, tears, and to ensure attachment to secure posts.
- Ø Sediment basins will be inspected for depth of sediment, and built-up sediment will be removed when it reaches 70 percent of the design capacity and at the end of the job.

KyTC BMP Plan for Project PCN ## -

- Ø Diversion dikes and berms will be inspected and any breaches promptly repaired. Areas that are eroding or scouring will be repaired and re-seeded / mulched as needed.
- Ø Temporary and permanent seeding and mulching will be inspected for bare spots, washouts, and healthy growth. Bare or eroded areas will be repaired as needed.
- Ø All material storage and equipment servicing areas that involve the management of bulk liquids, fuels, and bulk solids will be inspected weekly for conditions that represent a release or possible release of pollutants to the environment.

G. Non – Storm Water discharges

It is expected that non-storm water discharges may occur from the site during the construction period. Examples of non-storm water discharges include:

- Ø Water from water line flushings.
- Ø Water form cleaning concrete trucks and equipment.
- Ø Pavement wash waters (where no spills or leaks of toxic or hazardous materials have occurred).
- Ø Uncontaminated groundwater and rain water (from dewatering during excavation).

All non-storm water discharges will be directed to the sediment basin or to a filter fence enclosure in a flat vegetated infiltration area or be filtered via another approved commercial product.

H. Groundwater Protection Plan (3)

This plan serves as the groundwater protection plan as required by 401 KAR 5:037.

- Ø Contractors statement: (3)

The following activities, as enumerated by 401 KAR 5:037 Section 2 that require the preparation and implementation of a groundwater protection plan, will or may be may be conducted as part of this construction project:

_____ 2. (e) land treatment or land disposal of a pollutant;

_____ 2. (f) Storing, ..., or related handling of hazardous waste, solid waste or special waste, ..., in tanks, drums, or other containers, or in piles, (This does not include wastes managed in a container placed for collection and removal of municipal solid waste for disposal off site);

KyTC BMP Plan for Project PCN ## -

_____ 2. (g) Handling of materials in bulk quantities (equal or greater than 55 gallons or 100 pounds net dry weight transported held in an individual container) that, if released to the environment, would be a pollutant;

_____ 2. (j) Storing or related handling of road oils, dust suppressants,, at a central location;

_____ 2. (k) Application or related handling of road oils, dust suppressants or deicing materials, (does not include use of chloride-based deicing materials applied to roads or parking lots);

_____ 2. (m) Installation, construction, operation, or abandonment of wells, bore holes, or core holes, (this does not include bore holes for the purpose of explosive demolition);

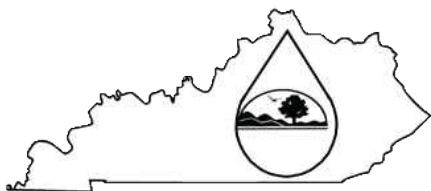
Or, check the following only if there are no qualifying activities

_____ There are no activities for this project as listed in 401 KAR 5:037 Section 2 that require the preparation and implementation of a groundwater protection plan.

The contractor is responsible for the preparation of a plan that addresses the

401 KAR 5:037 Section 3. (3) Elements of site specific groundwater protection plan:

- (a) General information about this project is covered in the Project information;
- (b) Activities that require a groundwater protection plan have been identified above;
- (c) Practices that will protect groundwater from pollution are addressed in section C. Other control measures.
- (d) Implementation schedule – all practices required to prevent pollution of groundwater are to be in place prior to conducting the activity;
- (e) Training is required as a part of the ground water protection plan. All employees of the contractor, sub-contractor and resident engineer personnel will be trained to understand the nature and requirements of this plan as they pertain to their job function(s). Training will be accomplished within one week of employment and annually thereafter. A record of training will be maintained by the contractor with a copy provide to the resident engineer.
- (f) Areas of the project and groundwater plan activities will be inspected as part of the weekly sediment and erosion control inspections
- (g) Certification (see signature page.)



Kentucky Pollutant Discharge Elimination (KPDES)

**Notice of intent (NOI) for coverage of Storm Water
Discharge Associated with Construction Activities Under
the KPDES Storm Water General Permit KYR100000**

Submission of this Notice of Intent constitutes notice that the party identified in the section I of this form intends to be authorized by a KPDES permit issued for storm water discharges associated with construction activity. Becoming a permittee obligates such discharger to comply with the terms and conditions of the permit.

I. Facility Operator Information

| | | | | |
|----------------------|------------------------|--------------------------|--------------|--------------|
| Operator Name(s) (*) | KY DOT | Phone(*) | 859-246-2355 | |
| Mailing Address(*) | 763 W. New Circle Road | Status of Owner/Operator | State | |
| City(*) | Lexington | State(*) | Kentucky | Zip(*) 40512 |

II. Facility/Site Location Information

| | | | | | | |
|-------------------------------|---|--------------------------------|---------------------------|-------------|----------|------------|
| Name of Project (*) | KYTC PCN ##-#### | Physical Address(*) | KY 169 MP 2.90 to MP 3.30 | | City(*) | Versailles |
| State(*) | Kentucky | Zip(*) | 40383 | County (*) | Woodford | |
| Latitude (Decimal Degrees)(*) | 37.99777 DMS to DD Converter | Longitude (Decimal Degrees)(*) | -84.701667 | SIC Code(*) | 1611 | |

III. Site Activity Information

a. For single projects provide the following information:

| | |
|--|------|
| Total Number of acres in project: | 5.76 |
| Total Number of acres to be disturbed: | 5.76 |
| Anticipated Start Date | |
| Anticipated Completion Date | |

b. For common plans of development provide the following information:

| | |
|--|--|
| Total number of acres in project | |
| Number of individual lots in development, if applicable | |
| Number of lots to be developed | |
| Total acreage of lots intended to be developed | |
| Total acreage intended to be disturbed | |
| Number of acres intended to be disturbed at any one time | |
| Anticipated start date | |
| Anticipated completion date | |
| List Contractor(s) | Company Name(*) Add New |

IV. If the permitted site discharges to a water body the following information is required

a:

| | | | |
|---|--|-------------|--------------|
| Name of Receiving Water (*) | Clear Creek | | |
| Anticipated number of discharge points | 3 | | |
| Location of Anticipated discharge points | Delete | Latitude(s) | Longitude(s) |
| | | 37.998749 | -84.704609 |
| | Delete | 37.998383 | -84.704453 |
| | Delete | 37.997909 | -84.701556 |
| | Add New | | |
| Receiving Water Body Stream-Use Designation | <input type="checkbox"/> Cold Water Aquatic Habitat <input type="checkbox"/> Domestic Water Supply <input type="checkbox"/> Outstanding State Resource Water <input type="checkbox"/> Primary Contact Recreation <input type="checkbox"/> Secondary Contact Recreation <input type="checkbox"/> Warm Water Aquatic Habitat | | |
| Antidegradation Categorization | | | |

b:

| | | | |
|--|---------------------|-------------|--------------|
| Name of Receiving Water | Unnamed Tributary 1 | | |
| Anticipated number of discharge points | 2 | | |
| Location of Anticipated discharge points | Delete | Latitude(s) | Longitude(s) |
| | | 37.996712 | -84.698395 |
| | Delete | 37.996704 | -84.698232 |

Antidegradation Categorization

V. If the permitted site discharges to a MS4 the following information is required

| | | | | | | | |
|---|---|----------------------|-------------|--------------|-------------------------|----------------------|----------------------|
| Name of MS4 | <input type="text"/> | | | | | | |
| Number of discharge points to the MS4 | <input type="text"/> | | | | | | |
| Location of each discharge point | <table border="1"> <tr> <td><input type="text"/></td> <td>Latitude(s)</td> <td>Longitude(s)</td> </tr> <tr> <td>Add New</td> <td><input type="text"/></td> <td><input type="text"/></td> </tr> </table> | <input type="text"/> | Latitude(s) | Longitude(s) | Add New | <input type="text"/> | <input type="text"/> |
| <input type="text"/> | Latitude(s) | Longitude(s) | | | | | |
| Add New | <input type="text"/> | <input type="text"/> | | | | | |
| Date of application/notification to the MS4 for construction site permit coverage | <input type="text"/> | | | | | | |

VI. Construction activities in or along a water body

| | |
|--|-------------------------|
| Will the project require construction activities in a water body or the riparian zone? | No <input type="text"/> |
| If Yes, describe scope of activity | <input type="text"/> |
| Is a Clean Water Act 404 permit required? | No <input type="text"/> |
| Is a Clean Water Act 401 Water Quality Certification required? | No <input type="text"/> |

VII. NOI Preparer Information

| | | | | | | |
|---------------------|---------------------------------------|----------------|--------------|-------------------|--------------------|-------------------------------|
| First Name (*) | Casey | Middle Initial | E | Last Name (*) | Smith | |
| Mailing Address (*) | PO Box 11127 763 West New Circle Road | | City(*) | Lexington | State(*) | Kentucky <input type="text"/> |
| Zip(*) | 40512 | Phone (*) | 859-246-2355 | eMail Address (*) | casey.smith@ky.gov | |

VIII. Attachment(s)

| | |
|--------------------------|---|
| Topographic map(*) | <input type="button" value="Upload File(s)"/> Files <input checked="" type="checkbox"/> eNOI Map.pdf (752KB) Remove |
| Supplemental Information | <input type="button" value="Upload File(s)"/> |

IX. Certification

I certify under penalty of law that this document and all attachments were prepared under my direction or supervision in accordance with a system designed to assure that qualified personnel properly gather and evaluate the information submitted. Based on my inquiry of the person or persons who manage the system, or those persons directly responsible for gathering the information, the information submitted is, to the best of my knowledge and belief, true, accurate, and complete. I am aware that there are significant penalties for submitting false information, including the possibility of fine and imprisonment for knowing violations. By submitting data, this transmission constitutes my signature and I am responsible for any and all content submitted either by me or by the people I represent.

| | | | |
|--------------------------|----------------------|------------------|--------------|
| Signature(*) | Robin Sprague | First Name(*) | Robin |
| Middle Initial | | Last Name(*) | Sprague |
| Contact eMail Address(*) | robin.sprague@ky.gov | Contact Phone(*) | 859-246-2355 |
| | | Date (*) | 10/17/2013 |

WHO MUST FILE A NOTICE OF INTENT (NOI) FORM

Federal law at 40 CFR Part 122 prohibits point source discharges of stormwater associated with industrial activity to a water body of the Commonwealth of Kentucky without a Kentucky Pollutant Discharge Elimination System (KPDES) permit. The operator of an industrial activity that has such a storm water discharge must submit a NOI to obtain coverage under the KPDES Storm Water General Permit. If you have questions about whether you need a permit under the KPDES Storm Water program, or if you need information as to whether a particular program is administered by the state agency, call the **Storm Water Contact, Operational Permits Section, Kentucky Division of Water at (502) 564-3410.**

WHERE TO FILE NOI FORM

Operational Permits Section SWP Branch,
 Division of Water 200 Fair Oaks Lane
 Frankfort, KY 40601

Electronic NOI-SWCAs are to be submitted a minimum of seven (7) working days prior to commencement of construction related activities. Paper NOI-SWCAs are to be submitted a minimum of thirty (30) working days prior to commencement of construction related activities.

COMPLETING THE FORM

Enter information in the appropriate areas only. (*) denotes a required field. Enter N/A (Not Applicable) for fields that are required but do not apply to your submission. If you have any questions regarding the completion of this form call the **Storm Water Contact, Operational Permits Section, at (502) 564-3410.**

SECTION I - FACILITY OPERATOR INFORMATION

Operator Name(s): Enter the name or names of all operators applying for coverage under KYR10 using this NOI.
Mailing Address, City, State, and Zip Code: Provide the mailing address of the primary operator
Phone No.: Provide the telephone numbers of the person who is responsible for the operation.
Status of Owner/Operator: Select the appropriate legal status of the operator of the facility from the dropdown list.
 Federal
 Public (other than federal or state)
 State

SECTION II - SITE LOCATION INFORMATION

Name of Project: Provide the name of the project.
Physical Address, City, State, Zip Code and County: Provide the physical address of the project.
Latitude/Longitude: Provide the general site latitude and longitude of the operation.
SIC Code: Enter the Standard Industrial Code for the project

SECTION III - SITE ACTIVITY INFORMATION

For single projects provide the following information:

Total number of acres in project: Indicate the total acreage of the project including both disturbed and undisturbed areas.
Total number of acres to be disturbed: Indicate the total number of acres of the project to be disturbed.
Anticipated start date: Indicate the approximate date of when construction activities will begin.
Anticipated completion date: Indicated the approximate date of when final stabilization will be achieved.

For common plans of development provide the following information:

Total number of acres in project: Indicate the total acreage of the project including both disturbed and undisturbed areas.
Number of individual lots in development, if applicable: Indicate the number of individual lots or unit in the common plan of development
Number of lots to be developed: Indicate the number of lots that you intend to develop.
Total acreage of lots intended to develop: Indicate the total acreage of the lots you intend to develop.
Total acreage intended to disturb: Indicate the total acreage of the lots you intend to disturb
Number of acres intended to disturb at any one time: Indicate the maximum number of acres to be disturbed at any one time.
Anticipated start date: Indicate the approximate date of when construction activities will begin.
Anticipated completion date: Indicated the approximate date of when final stabilization will be achieved.
List of contractors: Provide the names of all known contractors that will be working on site.

SECTION IV - IF THE PERMITTED SITE DISCHARGES TO A WATER BODY THE FOLLOWING INFORMATION IS REQUIRED

Name of Receiving Water: Provide the names of the each water body receiving discharges from the site. Provide only official USGS names do not provide local names.
Anticipated number of discharge points: Indicate the number of discharge points to each receiving water body.
Location of anticipated discharge points: Provide the latitude and longitude of each discharge point. Add points as necessary.
Receiving Water Body Stream Use Designation: Check all appropriate boxes.
Antidegradation Categorization: Select from the drop down box one of the following:
 Outstanding National Resource Water
 Exceptional Water
 High Quality Water
 Impaired Water

SECTION V - IF THE PERMITTED SITE DISCHARGES TO A MS4 THE FOLLOWING INFORMATION IS REQUIRED

Name of MS4: Provide the name of the MS4 to which the activity will discharge.
Number of discharge points to the MS4: Indicate the number of discharge points.
Location of each discharge point: Provide the latitude and longitude of each discharge point. Add points as necessary
Date of application/notification to the MS4 for construction site permit coverage: Indicate the date the MS4 has or will be notified.

SECTION VI - CONSTRUCTION ACTIVITIES IN OR ALONG A WATER BODY

Will the project require construction activities in a water body or the riparian zone: Select Yes or No from the drop down box. **If Yes, describe scope of activity:** Provide a brief description of the activity (ies) that will take place in the water body or the riparian zone.
Is a Clean Water Act 404 permit required: Select Yes or No from the drop down box.
Is a Clean Water Act 401 Water Quality Certification required: Select Yes or No from the drop down box.

SECTION VII - NOI PREPARER INFORMATION

Provide the name, mailing address, telephone number and eMail address of the person preparing the NOI.

SECTION VIII - Attachments

Attach a USGS topographic map indicating the location of the activity and the proposed discharge points.

SECTION IX - CERTIFICATION

Provide the name, mailing address, telephone number and eMail address of the person who is responsible for the activity.

Signature: Provide full name of the responsibility party. This will constitute a signature.

The NOI must be signed as follows:

Corporation: by a principal executive officer of at least the level of vice president.
Partnership or sole proprietorship: by a general partner or the proprietor respectively.

EXHIBIT #2

7-8701.00
Pinckard Pike (KY 169)
Grade, Drain, and Surfacing
Woodford County

KPDES NOI for Stormwater Discharges Associated with Construction
Activity Under the KPDES General Permit

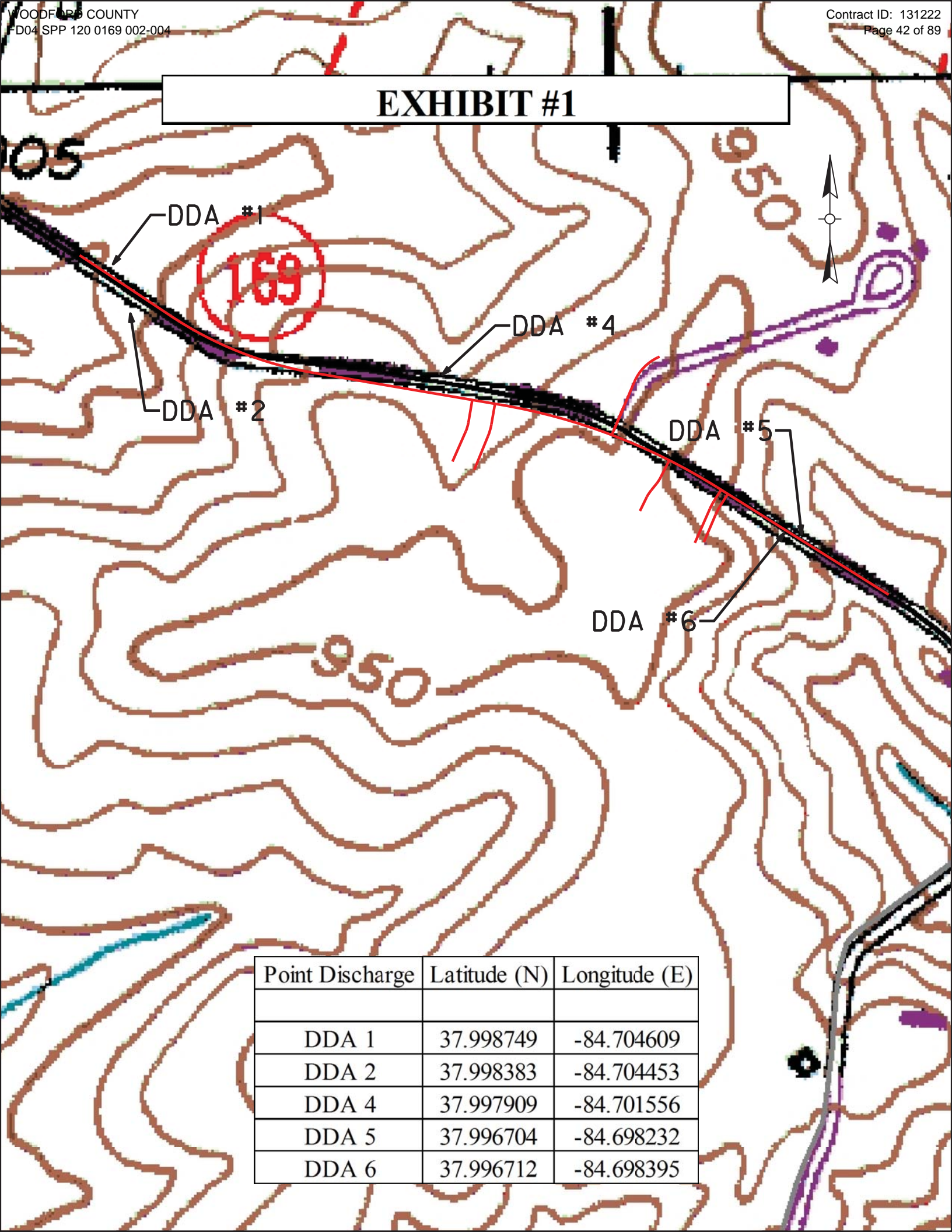
Transaction ID:

9e3f3519-ca83-41ba-b611-bd1215914578

Submittal ID:

30927

EXHIBIT #1



| Point Discharge | Latitude (N) | Longitude (E) |
|-----------------|--------------|---------------|
| DDA 1 | 37.998749 | -84.704609 |
| DDA 2 | 37.998383 | -84.704453 |
| DDA 4 | 37.997909 | -84.701556 |
| DDA 5 | 37.996704 | -84.698232 |
| DDA 6 | 37.996712 | -84.698395 |

KENTUCKY TRANSPORTATION CABINET COMMUNICATION ALL PROMISES (CAP)

| | | | |
|---|---------------------------|------------------------|--|
| Item Number <i>07-8701.00</i> | County WOODFORD | Route KY 169 | Project Manager kytc\robin.sprague |
|---|---------------------------|------------------------|--|

| CAP # | Date of Promise | Requestor | ocation of Promise: | CAP Description |
|--------------|------------------------|------------------|----------------------------|---|
| 1 | 4/5/13 | Terry Boyd | P#6 | From the second week in September through October, the Contractor can only work from 1:30 PM to 7:00 AM weekdays. |
| 2 | 9/5/13 | Beasley | P#8 | Entrance will be constructed with concrete entrance pavement |

PART II
SPECIFICATIONS AND STANDARD DRAWINGS

SPECIFICATIONS REFERENCE

Any reference in the plans or proposal to previous editions of the *Standard Specifications for Road and Bridge Construction* and *Standard Drawings* are superseded by *Standard Specifications for Road and Bridge Construction, Edition of 2012* and *Standard Drawings, Edition of 2012 with the 2012 Revision*.

**Supplemental Specifications to the
Standard Specifications for Road and Bridge Construction, 2012 Edition
Effective with the September 27, 2013 Letting**

| | |
|--------------------|--|
| Subsection: | 108.03 Preconstruction Conference. |
| Revision: | Replace 8) Staking with the following: 8) Staking (designated by a Professional Engineer or Land Surveyor licensed in the Commonwealth of Kentucky. |
| Subsection: | 109.07.02 Fuel. |
| Revision: | Revise item Crushed Aggregate Used for Embankment Stabilization to the following: Crushed Aggregate Used for Stabilization of Unsuitable Materials Used for Embankment Stabilization |
| Subsection: | 110.02 Demobilization. |
| Revision: | Replace the first part of the first sentence of the second paragraph with the following: Perform all work and operations necessary to accomplish final clean-up as specified in the first paragraph of Subsection 105.12; |
| Subsection: | 112.03.12 Project Traffic Coordinator (PTC). |
| Revision: | Replace the last paragraph of this subsection with the following: Ensure the designated PTC has sufficient skill and experience to properly perform the task assigned and has successfully completed the qualification courses. |
| Subsection: | 112.04.18 Diversions (By-Pass Detours). |
| Revision: | Insert the following sentence after the 2nd sentence of this subsection. The Department will not measure temporary drainage structures for payment when the contract documents provide the required drainage opening that must be maintained with the diversion. The temporary drainage structures shall be incidental to the construction of the diversion. If the contract documents fail to provide the required drainage opening needed for the diversion, the cost of the temporary drainage structure will be handled as extra work in accordance with section 109.04. |
| Subsection: | 201.03.01 Contractor Staking. |
| Revision: | Replace the first paragraph with the following: Perform all necessary surveying under the general supervision of a Professional Engineer or Land Surveyor licensed in the Commonwealth of Kentucky. |
| Subsection: | 201.04.01 Contractor Staking. |
| Revision: | Replace the last sentence of the paragraph with the following: Complete the general layout of the project under the supervision of a Professional Engineer or Land Surveyor licensed in the Commonwealth of Kentucky. |
| Subsection: | 206.04.01 Embankment-in-Place. |
| Revision: | Replace the fourth paragraph with the following: The Department will not measure suitable excavation included in the original plans that is disposed of for payment and will consider it incidental to Embankment-in-Place. |
| Subsection: | 208.02.01 Cement. |
| Revision: | Replace paragraph with the following: Select Type I or Type II cement conforming to Section 801. Use the same type cement throughout the work. |

**Supplemental Specifications to the
Standard Specifications for Road and Bridge Construction, 2012 Edition
Effective with the September 27, 2013 Letting**

| | |
|--------------------|--|
| Subsection: | 208.03.06 Curing and Protection. |
| Revision: | Replace the fourth paragraph with the following: Do not allow traffic or equipment on the finished surface until the stabilized subgrade has cured for a total of 7-days with an ambient air temperature above 40 degrees Fahrenheit. A curing day consists of a continuous 24-hour period in which the ambient air temperature does not fall below 40 degrees Fahrenheit. Curing days will not be calculated consecutively, but must total seven (7) , 24-hour days with the ambient air temperature remaining at or above 40 degrees Fahrenheit before traffic or equipment will be allowed to traverse the stabilized subgrade. The Department may allow a shortened curing period when the Contractor requests. The Contractor shall give the Department at least 3 day notice of the request for a shortened curing period. The Department will require a minimum of 3 curing days after final compaction. The Contractor shall furnish cores to the treated depth of the roadbed at 500 feet intervals for each lane when a shortened curing time is requested. The Department will test cores using an unconfined compression test. Roadbed cores must achieve a minimum strength requirement of 80 psi. |
| Subsection: | 208.03.06 Curing and Protection. |
| Revision: | Replace paragraph nine with the following: At no expense to the Department, repair any damage to the subgrade caused by freezing. |
| Subsection: | 212.03.03 Permanent Seeding and Protection. |
| Part: | A) Seed Mixtures for Permanent Seeding. |
| Number: | 2) |
| Revision: | Replace the paragraph with the following: Permanent Seeding on Slopes Greater than 3:1 in Highway Districts 4, 5, 6, and 7. Apply seed mix Type II at a minimum application rate of 100 pounds per acre. If adjacent to a golf course replace the crown vetch with Kentucky 31 Tall Fescue. |
| Subsection: | 212.03.03 Permanent Seeding and Protection. |
| Part: | A) Seed Mixtures for Permanent Seeding. |
| Number: | 3) |
| Revision: | Replace the paragraph with the following: Permanent Seeding on Slopes Greater than 3:1 in Highway Districts 1, 2, 3, 8, 9, 10, 11, and 12. Apply seed mix Type III at a minimum application rate of 100 pounds per acre. If adjacent to crop land or golf course, replace the Sericea Lespedeza with Kentucky 31 Fescue. |
| Subsection: | 213.03.02 Progress Requirements. |
| Revision: | Replace the last sentence of the third paragraph with the following: Additionally, the Department will apply a penalty equal to the liquidated damages when all aspects of the work are not coordinated in an acceptable manner within 7 calendar days after written notification. |
| Subsection: | 213.03.05 Temporary Control Measures. |
| Part: | E) Temporary Seeding and Protection. |
| Revision: | Delete the second sentence of the first paragraph. |
| Subsection: | 304.02.01 Physical Properties. |
| Table: | Required Geogrid Properties |
| Revision: | Replace all references to Test Method "GRI-GG2-87" with ASTM D 7737. |

**Supplemental Specifications to the
Standard Specifications for Road and Bridge Construction, 2012 Edition
Effective with the September 27, 2013 Letting**

| | |
|--|--|
| Subsection: Part: Revision: | 402.03.02 Contractor Quality Control and Department Acceptance. B) Sampling. Replace the second sentence with the following: The Department will determine when to obtain the quality control samples using the random-number feature of the mix design submittal and approval spreadsheet. The Department will randomly determine when to obtain the verification samples required in Subsections 402.03.03 and 402.03.04 using the Asphalt Mixture Sample Random Tonnage Generator. |
| Subsection: Part: Number: Revision: | 402.03.02 Contractor Quality Control and Department Acceptance. D) Testing Responsibilities. 3) VMA. Add the following paragraph below Number 3) VMA: Retain the AV/VMA specimens and one additional corresponding G_{mm} sample for 5 working days for mixture verification testing by the Department. For Specialty Mixtures, retain a mixture sample for 5 working days for mixture verification testing by the Department. When the Department's test results do not verify that the Contractor's quality control test results are within the acceptable tolerances according to Subsection 402.03.03, retain the samples and specimens from the affected subplot(s) for the duration of the project. |
| Subsection: Part: Number: Revision: | 402.03.02 Contractor Quality Control and Department Acceptance. D) Testing Responsibilities. 4) Density. Replace the second sentence of the Option A paragraph with the following: Perform coring by the end of the following work day. |
| Subsection: Part: Number: Revision: | 402.03.02 Contractor Quality Control and Department Acceptance. D) Testing Responsibilities. 5) Gradation. Delete the second paragraph. |
| Subsection: Part: Number: Revision: | 402.03.02 Contractor Quality Control and Department Acceptance. H) Unsatisfactory Work. 1) Based on Lab Data. Replace the second paragraph with the following: When the Engineer determines that safety concerns or other considerations prohibit an immediate shutdown, continue work and the Department will make an evaluation of acceptability according to Subsection 402.03.05. |

**Supplemental Specifications to the
Standard Specifications for Road and Bridge Construction, 2012 Edition
Effective with the September 27, 2013 Letting**

| | |
|---|---|
| <p>Subsection: Revision:</p> | <p>402.03.03 Verification. Replace the first paragraph with the following: 402.03.03 Mixture Verification. For volumetric properties, the Department will perform a minimum of one verification test for AC, AV, and VMA according to the corresponding procedures as given in Subsection 402.03.02. The Department will randomly determine when to obtain the verification sample using the Asphalt Mixture Sample Random Tonnage Generator. For specialty mixtures, the Department will perform one AC and one gradation determination per lot according to the corresponding procedures as given in Subsection 402.03.02. However, Department personnel will not perform AC determinations according to KM 64-405. The Contractor will obtain a quality control sample at the same time the Department obtains the mixture verification sample and perform testing according to the procedures given in Subsection 402.03.02. If the Contractor's quality control sample is verified by the Department's test results within the tolerances provided below, the Contractor's sample will serve as the quality control sample for the affected subplot. The Department may perform the mixture verification test on the Contractor's equipment or on the Department's equipment.</p> |
| <p>Subsection: Part: Revision:</p> | <p>402.03.03 Verification. A) Evaluation of Subplot(s) Verified by Department. Replace the third sentence of the second paragraph with the following: When the paired <i>t</i>-test indicates that the Contractor's data and Department's data are possibly not from the same population, the Department will investigate the cause for the difference according to Subsection 402.03.05 and implement corrective measures as the Engineer deems appropriate.</p> |
| <p>Subsection: Part: Revision:</p> | <p>402.03.03 Verification. B) Evaluation of Subplots Not Verified by Department. Replace the third sentence of the first paragraph with the following: When differences between test results are not within the tolerances listed below, the Department will resolve the discrepancy according to Subsection 402.03.05.</p> |
| <p>Subsection: Part: Revision:</p> | <p>402.03.03 Verification. B) Evaluation of Subplots Not Verified by Department. Replace the third sentence of the second paragraph with the following: When the <i>F</i>-test or <i>t</i>-test indicates that the Contractor's data and Department's data are possibly not from the same population, the Department will investigate the cause for the difference according to Subsection 402.03.05 and implement corrective measures as the Engineer deems appropriate.</p> |
| <p>Subsection: Part: Revision:</p> | <p>402.03.03 Verification. C) Test Data Patterns. Replace the second sentence with the following: When patterns indicate substantial differences between the verified and non-verified subplots, the Department will perform further comparative testing according to subsection 402.03.05.</p> |

**Supplemental Specifications to the
Standard Specifications for Road and Bridge Construction, 2012 Edition
Effective with the September 27, 2013 Letting**

| | |
|--------------------|---|
| Subsection: | 402.03 CONSTRUCTION. |
| Revision: | Add the following subsection: 402.03.04 Testing Equipment and Technician Verification. For mixtures with a minimum quantity of 20,000 tons and for every 20,000 tons thereafter, the Department will obtain an additional verification sample at random using the Asphalt Mixture Sample Random Tonnage Generator in order to verify the integrity of the Contractor's and Department's laboratory testing equipment and technicians. The Department will obtain a mixture sample of at least 150 lb at the asphalt mixing plant according to KM 64-425 and split it according to AASHTO R 47. The Department will retain one split portion of the sample and provide the other portion to the Contractor. At a later time convenient to both parties, the Department and Contractor will simultaneously reheat the sample to the specified compaction temperature and test the mixture for AV and VMA using separate laboratory equipment according to the corresponding procedures given in Subsection 402.03.02. The Department will evaluate the differences in test results between the two laboratories. When the difference between the results for AV or VMA is not within ± 2.0 percent, the Department will investigate and resolve the discrepancy according to Subsection 402.03.05. |
| Subsection: | 402.03.04 Dispute Resolution. |
| Revision: | Change the subsection number to 402.03.05. |
| Subsection: | 402.05 PAYMENT. |
| Part: | Lot Pay Adjustment Schedule Compaction Option A Base and Binder Mixtures |
| Table: | AC |
| Revision: | Replace the Deviation from JMF(%) that corresponds to a Pay Value of 0.95 to ± 0.6 . |
| Subsection: | 403.02.10 Material Transfer Vehicle (MTV). |
| Revision: | Replace the first sentence with the following: In addition to the equipment specified above, provide a MTV with the following minimum characteristics: |
| Subsection: | 412.02.09 Material Transfer Vehicle (MTV). |
| Revision: | Replace the paragraph with the following: Provide and utilize a MTV with the minimum characteristics outlined in section 403.02.10. |
| Subsection: | 412.03.07 Placement and Compaction. |
| Revision: | Replace the first paragraph with the following: Use a MTV when placing SMA mixture in the driving lanes. The MTV is not required on ramps and/or shoulders unless specified in the contract. When the Engineer determines the use of the MTV is not practical for a portion of the project, the Engineer may waive its requirement for that portion of pavement by a letter documenting the waiver. |
| Subsection: | 412.04 MEASUREMENT. |
| Revision: | Add the following subsection: 412.04.03. Material Transfer Vehicle (MTV). The Department will not measure the MTV for payment and will consider its use incidental to the asphalt mixture. |

**Supplemental Specifications to the
Standard Specifications for Road and Bridge Construction, 2012 Edition
Effective with the September 27, 2013 Letting**

| | |
|--------------------|--|
| Subsection: | 501.03.19 Surface Tolerances and Testing Surface. |
| Part: | B) Ride Quality. |
| Revision: | Add the following to the end of the first paragraph: The Department will specify if the ride quality requirements are Category A or Category B when ride quality is specified in the Contract. Category B ride quality requirements shall apply when the Department fails to classify which ride quality requirement will apply to the Contract. |
| Subsection: | 603.03.06 Cofferdams. |
| Revision: | Replace the seventh sentence of paragraph one with the following: Submit drawings that are stamped by a Professional Engineer licensed in the Commonwealth of Kentucky. |
| Subsection: | 605.03.04 Tack Welding. |
| Revision: | Insert the subsection and the following: 605.03.04 Tack Welding. The Department does not allow tack welding. |
| Subsection: | 606.03.17 Special Requirements for Latex Concrete Overlays. |
| Part: | A) Existing Bridges and New Structures. |
| Number: | 1) Prewetting and Grout-Bond Coat. |
| Revision: | Add the following sentence to the last paragraph: Do not apply a grout-bond coat on bridge decks prepared by hydrodemolition. |
| Subsection: | 609.03 Construction. |
| Revision: | Replace Subsection 609.03.01 with the following: 609.03.01 A) Swinging the Spans. Before placing concrete slabs on steel spans or precast concrete release the temporary erection supports under the bridge and swing the span free on its supports. 609.03.01 B) Lift Loops. Cut all lift loops flush with the top of the precast beam once the beam is placed in the final location and prior to placing steel reinforcement. At locations where lift loops are cut, paint the top of the beam with galvanized or epoxy paint. |
| Subsection: | 611.03.02 Precast Unit Construction. |
| Revision: | Replace the first sentence of the subsection with the following: Construct units according to ASTM C1577, replacing Table 1 (Design Requirements for Precast Concrete Box Sections Under Earth, Dead and HL-93 Live Load Conditions) with KY Table 1 (Precast Culvert KYHL-93 Design Table) , and Section 605 with the following exceptions and additions: |
| Subsection: | 613.03.01 Design. |
| Number: | 2) |
| Revision: | Replace "AASHTO Standard Specifications for Highway Bridges" with "AASHTO LRFD Bridge Design Specifications" |
| Subsection: | 615.06.02 |
| Revision: | Add the following sentence to the end of the subsection. The ends of units shall be normal to walls and centerline except exposed edges shall be beveled $\frac{3}{4}$ inch. |
| Subsection: | 615.06.03 Placement of Reinforcement in Precast 3-Sided Units. |
| Revision: | Replace the reference of 6.6 in the section to 615.06.06. |
| Subsection: | 615.06.04 Placement of Reinforcement for Precast Endwalls. |
| Revision: | Replace the reference of 6.7 in the section to 615.06.07. |

**Supplemental Specifications to the
Standard Specifications for Road and Bridge Construction, 2012 Edition
Effective with the September 27, 2013 Letting**

| | |
|--|---|
| <p>Subsection: Revision:</p> | <p>615.06.06 Laps, Welds, and Spacing for Precast 3-Sided Units. Replace the subsection with the following: Tension splices in the circumferential reinforcement shall be made by lapping. Laps may not be tack welded together for assembly purposes. For smooth welded wire fabric, the overlap shall meet the requirements of AASHTO 2012 Bridge Design Guide Section 5.11.2.5.2 and AASHTO 2012 Bridge Design Guide Section 5.11.6.3. For deformed welded wire fabric, the overlap shall meet the requirements of AASHTO 2012 Bridge Design Guide Section 5.11.2.5.1 and AASHTO 2012 Bridge Design Guide Section 5.11.6.2. The overlap of welded wire fabric shall be measured between the outer most longitudinal wires of each fabric sheet. For deformed billet-steel bars, the overlap shall meet the requirements of AASHTO 2012 Bridge Design Guide Section 5.11.2.1. For splices other than tension splices, the overlap shall be a minimum of 12" for welded wire fabric or deformed billet-steel bars. The spacing center to center of the circumferential wires in a wire fabric sheet shall be no less than 2 inches and no more than 4 inches. The spacing center to center of the longitudinal wires shall not be more than 8 inches. The spacing center to center of the longitudinal distribution steel for either line of reinforcing in the top slab shall be not more than 16 inches.</p> |
| <p>Subsection: Revision:</p> | <p>615.06.07 Laps, Welds, and Spacing for Precast Endwalls. Replace the subsection with the following: Splices in the reinforcement shall be made by lapping. Laps may not be tack welded together for assembly purposes. For smooth welded wire fabric, the overlap shall meet the requirements of AASHTO 2012 Bridge Design Guide Section 5.11.2.5.2 and AASHTO 2012 Bridge Design Guide Section 5.11.6.3. For deformed welded wire fabric, the overlap shall meet the requirements of AASHTO 2012 Bridge Design Guide Section 5.11.2.5.1 and AASHTO 2012 Bridge Design Guide Section 5.11.6.2. For deformed billet-steel bars, the overlap shall meet the requirements of AASHTO 2012 Bridge Design Guide Section 5.11.2.1. The spacing center-to-center of the wire fabric sheet shall not be less than 2 inches or more than 8 inches.</p> |
| <p>Subsection: Revision:</p> | <p>615.08.01 Type of Test Specimen. Replace the subsection with the following: Start-up slump, air content, unit weight, and temperature tests will be performed each day on the first batch of concrete. Acceptable start-up results are required for production of the first unit. After the first unit has been established, random acceptance testing is performed daily for each 50 yd³ (or fraction thereof). In addition to the slump, air content, unit weight, and temperature tests, a minimum of one set of cylinders shall be required each time plastic property testing is performed.</p> |
| <p>Subsection: Revision:</p> | <p>615.08.02 Compression Testing. Delete the second sentence.</p> |
| <p>Subsection:</p> | <p>615.08.04 Acceptability of Core Tests. Delete the entire subsection.</p> |
| <p>Subsection: Revision:</p> | <p>615.12 Inspection. Add the following sentences to the end of the subsection: Units will arrive at jobsite with the "Kentucky Oval" stamped on the unit which is an indication of acceptable inspection at the production facility. Units shall be inspected upon arrival for any evidence of damage resulting from transport to the jobsite.</p> |

**Supplemental Specifications to the
Standard Specifications for Road and Bridge Construction, 2012 Edition
Effective with the September 27, 2013 Letting**

| | |
|--------------------|--|
| Subsection: | 716.02.02 Paint. |
| Revision: | Replace sentence with the following: Conform to Section 821. |
| Subsection: | 716.03 CONSTRUCTION. |
| Revision: | Replace bullet 5) with the following: 5) AASHTO Standard Specifications for Structural Supports for Highway Signs, Luminaires, and Traffic Signals, 2013-6th Edition with current interims, |
| Subsection: | 716.03.02 Lighting Standard Installation. |
| Revision: | Replace the second sentence with the following: Regardless of the station and offset noted, locate all poles/bases behind the guardrail a minimum of four feet from the front face of the guardrail to the front face of the pole base. |
| Subsection: | 716.03.02 Lighting Standard Installation. |
| Part: | A) Conventional Installation. |
| Revision: | Replace the third sentence with the following: Orient the transformer base so the door is positioned on the side away from on-coming traffic. |
| Subsection: | 716.03.02 Lighting Standard Installation. |
| Part: | A) Conventional Installation. |
| Number: | 1) Breakaway Installation and Requirements. |
| Revision: | Replace the first sentence with the following: For breakaway supports, conform to Section 12 of the AASHTO Standard Specifications for Structural Supports for Highway Signs, Luminaires, and Traffic Signals, 2013-6th Edition with current interims. |
| Subsection: | 716.03.02 Lighting Standard Installation. |
| Part: | B) High Mast Installation |
| Revision: | Replace the first sentence with the following: Install each high mast pole as noted on plans. |
| Subsection: | 716.03.02 Lighting Standard Installation. |
| Part: | B) High Mast Installation |
| Number: | 2) Concrete Base Installation |
| Revision: | Modification of Chart and succeeding paragraphs within this section: |

| Drilled Shaft Depth Data | | | | | | | |
|--------------------------|-------|------------------|------------------|------------------|------|------------------------|------|
| Level Ground | | 3:1 Ground Slope | | 2:1 Ground Slope | | 1.5:1 Ground Slope (2) | |
| Soil | Rock | Soil | Rock | Soil | Rock | Soil | Rock |
| 17 ft | 7 ft | 19 ft | 7 ft | 20 ft | 7 ft | (1) | 7 ft |
| Steel Requirements | | | | | | | |
| Vertical Bars | | | | Ties or Spiral | | | |
| Size | Total | Size | Spacing or Pitch | | | | |
| #10 | 16 | #4 | 12 inch | | | | |

**Supplemental Specifications to the
Standard Specifications for Road and Bridge Construction, 2012 Edition
Effective with the September 27, 2013 Letting**

| | |
|---|---|
| | <p>(1): Shaft length is 22' for cohesive soil only. For cohesionless soil, contact geotechnical branch for design.</p> <p>(2): Do not construct high mast drilled shafts on ground slopes steeper than 1.5:1 without the approval of the Division of Traffic.</p> <p>If rock is encountered during drilling operations and confirmed by the engineer to be of sound quality, the shaft is only required to be further advanced into the rock by the length of rock socket shown in the table. The total length of the shaft need not be longer than that of soil alone. Both longitudinal rebar length and number of ties or spiral length shall be adjusted accordingly.</p> <p>If a shorter depth is desired for the drilled shaft, the contractor shall provide, for the state's review and approval, a detailed column design with individual site specific soil and rock analysis performed and approved by a Professional Engineer licensed in the Commonwealth of Kentucky.</p> <p>Spiral reinforcement may be substituted for ties. If spiral reinforcement is used, one and one-half closed coils shall be provided at the ends of each spiral unit. Subsurface conditions consisting of very soft clay or very loose saturated sand could result in soil parameters weaker than those assumed. Engineer shall consult with the geotechnical branch if such conditions are encountered.</p> <p>The bottom of the drilled hole shall be firm and thoroughly cleaned so no loose or compressible materials are present at the time of the concrete placement. If the drilled hole contains standing water, the concrete shall be placed using a tremie to displace water. Continuous concrete flow will be required to insure full displacement of any water.</p> <p>The reinforcement and anchor bolts shall be adequately supported in the proper positions so no movement occurs during concrete placement. Welding of anchor bolts to the reinforcing cage is unacceptable, templates shall be used.</p> <p>Exposed portions of the foundation shall be formed to create a smooth finished surface. All forming shall be removed upon completion of foundation construction.</p> |
| <p>Subsection:</p> <p>Part:</p> <p>Revision:</p> | <p>716.03.03 Trenching.</p> <p>A) Trenching of Conduit for Highmast Ducted Cables.</p> <p>Add the following after the first sentence: If depths greater than 24 inches are necessary, obtain the Engineer's approval and maintain the required conduit depths coming into the junction boxes. No payment for additional junction boxes for greater depths will be allowed.</p> |
| <p>Subsection:</p> <p>Part:</p> <p>Revision:</p> | <p>716.03.03 Trenching.</p> <p>B) Trenching of Conduit for Non-Highmast Cables.</p> <p>Add the following after the second sentence: If depths greater than 24 inches are necessary for either situation listed previously, obtain the Engineer's approval and maintain the required conduit depths coming into the junction boxes. No payment for additional junction boxes for greater depths will be allowed.</p> |
| <p>Subsection:</p> <p>Revision:</p> | <p>716.03.10 Junction Boxes.</p> <p>Replace subsection title with the following: Electrical Junction Box.</p> |

**Supplemental Specifications to the
Standard Specifications for Road and Bridge Construction, 2012 Edition
Effective with the September 27, 2013 Letting**

| | |
|--------------------|---|
| Subsection: | 716.04.07 Pole with Secondary Control Equipment. |
| Revision: | Replace the paragraph with the following: The Department will measure the quantity as each individual unit furnished and installed. The Department will not measure mounting the cabinet to the pole, backfilling, restoration, any necessary hardware to anchor pole, or electrical inspection fees, and will consider them incidental to this item of work. The Department will also not measure furnishing and installing electrical service conductors, specified conduits, meter base, transformer, service panel, fused cutout, fuses, lighting arrestors, photoelectrical control, circuit breaker, contactor, manual switch, ground rods, and ground wires and will consider them incidental to this item of work. |
| Subsection: | 716.04.08 Lighting Control Equipment. |
| Revision: | Replace the paragraph with the following: The Department will measure the quantity as each individual unit furnished and installed. The Department will not measure constructing the concrete base, excavation, backfilling, restoration, any necessary anchors, or electrical inspection fees, and will consider them incidental to this item of work. The Department will also not measure furnishing and installing electrical service conductors, specified conduits, meter base, transformer, service panel, fused cutout, fuses, lighting arrestors, photoelectrical control, circuit breakers, contactor, manual switch, ground rods, and ground wires and will consider them incidental to this item of work. |
| Subsection: | 716.04.09 Luminaire. |
| Revision: | Replace the first sentence with the following: The Department will measure the quantity as each individual unit furnished and installed. |
| Subsection: | 716.04.10 Fused Connector Kits. |
| Revision: | Replace the first sentence with the following: The Department will measure the quantity as each individual unit furnished and installed. |
| Subsection: | 716.04.13 Junction Box. |
| Revision: | Replace the subsection title with the following: Electrical Junction Box Type Various. |
| Subsection: | 716.04.13 Junction Box. |
| Part: | A) Junction Electrical. |
| Revision: | Rename A) Junction Electrical to the following: A) Electrical Junction Box. |
| Subsection: | 716.04.14 Trenching and Backfilling. |
| Revision: | Replace the second sentence with the following: The Department will not measure excavation, backfilling, underground utility warning tape (if required), the restoration of disturbed areas to original condition, and will consider them incidental to this item of work. |
| Subsection: | 716.04.18 Remove Lighting. |
| Revision: | Replace the paragraph with the following: The Department will measure the quantity as a lump sum for the removal of lighting equipment. The Department will not measure the disposal of all equipment and materials off the project by the contractor. The Department also will not measure the transportation of the materials and will consider them incidental to this item of work. |

**Supplemental Specifications to the
Standard Specifications for Road and Bridge Construction, 2012 Edition
Effective with the September 27, 2013 Letting**

| Subsection: | 716.04.20 Bore and Jack Conduit. | | | | | | | | | | | | | | | |
|--------------------|--|-----------------|-----------------|-----------------|-------|-------------------------|------|-------|--------------------------------|------|------------|--------------------------------|------|------------|--------------------------------|------|
| Revision: | Replace the paragraph with the following: The Department will measure the quantity in linear feet. This item shall include all work necessary for boring and installing conduit under an existing roadway. Construction methods shall be in accordance with Sections 706.03.02, paragraphs 1, 2, and 4. | | | | | | | | | | | | | | | |
| Subsection: | 716.05 PAYMENT. | | | | | | | | | | | | | | | |
| Revision: | Replace items 04810-04811, 20391NS835 and, 20392NS835 under <u>Code</u> , <u>Pay Item</u> , and <u>Pay Unit</u> with the following: | | | | | | | | | | | | | | | |
| | <table border="0"> <thead> <tr> <th><u>Code</u></th> <th><u>Pay Item</u></th> <th><u>Pay Unit</u></th> </tr> </thead> <tbody> <tr> <td>04810</td> <td>Electrical Junction Box</td> <td>Each</td> </tr> <tr> <td>04811</td> <td>Electrical Junction Box Type B</td> <td>Each</td> </tr> <tr> <td>20391NS835</td> <td>Electrical Junction Box Type A</td> <td>Each</td> </tr> <tr> <td>20391NS835</td> <td>Electrical Junction Box Type C</td> <td>Each</td> </tr> </tbody> </table> | <u>Code</u> | <u>Pay Item</u> | <u>Pay Unit</u> | 04810 | Electrical Junction Box | Each | 04811 | Electrical Junction Box Type B | Each | 20391NS835 | Electrical Junction Box Type A | Each | 20391NS835 | Electrical Junction Box Type C | Each |
| <u>Code</u> | <u>Pay Item</u> | <u>Pay Unit</u> | | | | | | | | | | | | | | |
| 04810 | Electrical Junction Box | Each | | | | | | | | | | | | | | |
| 04811 | Electrical Junction Box Type B | Each | | | | | | | | | | | | | | |
| 20391NS835 | Electrical Junction Box Type A | Each | | | | | | | | | | | | | | |
| 20391NS835 | Electrical Junction Box Type C | Each | | | | | | | | | | | | | | |
| Subsection: | 723.03 CONSTRUCTION. | | | | | | | | | | | | | | | |
| Revision: | Replace bullet 5) with the following: 5) AASHTO Standard Specifications for Structural Supports for Highway Signs, Luminaires, and Traffic Signals, 2013-6th Edition with current interims, | | | | | | | | | | | | | | | |
| Subsection: | 723.02.02 Paint. | | | | | | | | | | | | | | | |
| Revision: | Replace sentence with the following: Conform to Section 821. | | | | | | | | | | | | | | | |
| Subsection: | 723.03.02 Poles and Bases Installation. | | | | | | | | | | | | | | | |
| Revision: | Replace the first sentence with the following: Regardless of the station and offset noted, locate all poles/bases behind the guardrail a minimum of four feet from the front face of the guardrail to the front face of the pole base. | | | | | | | | | | | | | | | |
| Subsection: | 723.03.02 Poles and Bases Installation. | | | | | | | | | | | | | | | |
| Part: | A) Steel Strain and Mastarm Poles Installation | | | | | | | | | | | | | | | |
| Revision: | Replace the second paragraph with the following: For concrete base installation, see Section 716.03.02, B), 2), Paragraphs 2-7. Drilled shaft depth shall be based on the soil conditions encountered during drilling and slope condition at the site. Refer to the design chart below: | | | | | | | | | | | | | | | |
| Subsection: | 723.03.02 Poles and Bases Installation. | | | | | | | | | | | | | | | |
| Part: | B) Pedestal or Pedestal Post Installation. | | | | | | | | | | | | | | | |
| Revision: | Replace the fourth sentence of the paragraph with the following: For breakaway supports, conform to Section 12 of the AASHTO Standard Specifications for Structural Supports for Highway Signs, Luminaires, and Traffic Signals, 2013-6th Edition with current interims. | | | | | | | | | | | | | | | |
| Subsection: | 723.03.03 Trenching. | | | | | | | | | | | | | | | |
| Part: | A) Under Roadway. | | | | | | | | | | | | | | | |
| Revision: | Add the following after the second sentence: If depths greater than 24 inches are necessary, obtain the Engineer's approval and maintain ether required conduit depths coming into the junction boxes. No payment for additional junction boxes for greater depths will be allowed. | | | | | | | | | | | | | | | |

**Supplemental Specifications to the
Standard Specifications for Road and Bridge Construction, 2012 Edition
Effective with the September 27, 2013 Letting**

| | |
|--------------------|---|
| Subsection: | 723.03.11 Wiring Installation. |
| Revision: | Add the following sentence between the fifth and sixth sentences: Provide an extra two feet of loop wire and lead-in past the installed conduit in poles, pedestals, and junction boxes. |
| Subsection: | 723.03.12 Loop Installation. |
| Revision: | Replace the fifth sentence with the following: Provide an extra two feet of loop wire and lead-in past the installed conduit in poles, pedestals, and junction boxes. |
| Subsection: | 723.04.02 Junction Box. |
| Revision: | Replace subsection title with the following: Electrical Junction Box Type. |
| Subsection: | 723.04.03 Trenching and Backfilling. |
| Revision: | Replace the second sentence with the following: The Department will not measure excavation, backfilling, underground utility warning tape (if required), the restoration of disturbed areas to original condition, and will consider them incidental to this item of work. |
| Subsection: | 723.04.10 Signal Pedestal. |
| Revision: | Replace the second sentence with the following: The Department will not measure excavation, concrete, reinforcing steel, specified conduits, fittings, ground rod, ground wire, backfilling, restoring disturbed areas, or other necessary hardware and will consider them incidental to this item of work. |
| Subsection: | 723.04.15 Loop Saw Slot and Fill. |
| Revision: | Replace the second sentence with the following: The Department will not measure sawing, cleaning and filling induction loop saw slot, loop sealant, backer rod, and grout and will consider them incidental to this item of work. |
| Subsection: | 723.04.16 Pedestrian Detector. |
| Revision: | Replace the paragraph with the following: The Department will measure the quantity as each individual unit furnished, installed and connected to pole/pedestal. The Department will not measure installing R10-3e (with arrow) sign, furnishing and installing mounting hardware for sign and will consider them incidental to this item of work. |
| Subsection: | 723.04.18 Signal Controller- Type 170. |
| Revision: | Replace the second sentence with the following: The Department will not measure constructing the concrete base or mounting the cabinet to the pole, connecting the signal and detectors, excavation, backfilling, restoration, any necessary pole mounting hardware, electric service, or electrical inspection fees and will consider them incidental to this item of work. The Department will also not measure furnishing and connecting the induction of loop amplifiers, pedestrian isolators, load switches, model 400 modem card; furnishing and installing electrical service conductors, specified conduits, anchors, meter base, fused cutout, fuses, ground rods, ground wires and will consider them incidental to this item of work. |

**Supplemental Specifications to the
Standard Specifications for Road and Bridge Construction, 2012 Edition
Effective with the September 27, 2013 Letting**

| | |
|--------------------|--|
| Subsection: | 723.04.20 Install Signal Controller - Type 170. |
| Revision: | Replace the paragraph with the following: The Department will measure the quantity as each individual unit installed. The Department will not measure constructing the concrete base or mounting the cabinet to the pole, connecting the signal and detectors, and excavation, backfilling, restoration, any necessary pole mounting hardware, electric service, or electrical inspection fees and will consider them incidental to this item of work. The Department will also not measure connecting the induction loop amplifiers, pedestrian, isolators, load switches, model 400 modem card; furnishing and installing electrical service conductors, specified conduits, anchors, meter base, fused cutout, fuses, ground rods, ground wires and will consider them incidental to this item of work. |
| Subsection: | 723.04.22 Remove Signal Equipment. |
| Revision: | Replace the paragraph with the following: The Department will measure the quantity as a lump sum removal of signal equipment. The Department will not measure the return of control equipment and signal heads to the Department of Highways as directed by the District Traffic Engineer. The Department also will not measure the transportation of materials of the disposal of all other equipment and materials off the project by the contractor and will consider them incidental to this item of work. |
| Subsection: | 723.04.28 Install Pedestrian Detector Audible. |
| Revision: | Replace the second sentence with the following: The Department will not measure installing sign R10-3e (with arrow) and will consider it incidental to this item of work. |
| Subsection: | 723.04.29 Audible Pedestrian Detector. |
| Revision: | Replace the second sentence with the following: The Department will not measure furnishing and installing the sign R10-3e (with arrow) and will consider it incidental to this item of work. |
| Subsection: | 723.04.30 Bore and Jack Conduit. |
| Revision: | Replace the paragraph with the following: The Department will measure the quantity in linear feet. This item shall include all work necessary for boring and installing conduit under an existing roadway. Construction methods shall be in accordance with Sections 706.03.02, paragraphs 1, 2, and 4. |
| Subsection: | 723.04.31 Install Pedestrian Detector. |
| Revision: | Replace the paragraph with the following: The Department will measure the quantity as each individual unit installed and connected to pole/pedestal. The Department will not measure installing sign R 10-3e (with arrow) and will consider it incidental to this item of work. |
| Subsection: | 723.04.32 Install Mast Arm Pole. |
| Revision: | Replace the second sentence with the following: The Department will not measure arms, signal mounting brackets, anchor bolts, or any other necessary hardware and will consider them incidental to this item of work. |
| Subsection: | 723.04.33 Pedestal Post. |
| Revision: | Replace the second sentence with the following: The Department will not measure excavation, concrete, reinforcing steel, anchor bolts, conduit, fittings, ground rod, ground wire, backfilling, restoration, or any other necessary hardware and will consider them incidental to this item of work. |

**Supplemental Specifications to the
Standard Specifications for Road and Bridge Construction, 2012 Edition
Effective with the September 27, 2013 Letting**

| Subsection: | 723.04.36 Traffic Signal Pole Base. | | | | | | | | | | | | | | | |
|--------------------|--|-----------------|-----------------|-----------------|-------|-------------------------|------|-------|--------------------------------|------|------------|--------------------------------|------|------------|--------------------------------|------|
| Revision: | Replace the second sentence with the following: The Department will not measure excavation, reinforcing steel, anchor bolts, specified conduits, ground rods, ground wires, backfilling, or restoration and will consider them incidental to this item of work. | | | | | | | | | | | | | | | |
| Subsection: | 723.04.37 Install Signal Pedestal. | | | | | | | | | | | | | | | |
| Revision: | Replace the second sentence with the following: The Department will not measure excavation, concrete, reinforcing steel, anchor bolts, specified conduits, fittings, ground rod, ground wire, backfilling, restoration, or any other necessary hardware and will consider them incidental to this item of work. | | | | | | | | | | | | | | | |
| Subsection: | 723.04.38 Install Pedestal Post. | | | | | | | | | | | | | | | |
| Revision: | Replace the second sentence with the following: The Department will not measure excavation, concrete, reinforcing steel, anchor bolts, specified conduits, fittings, ground rod, ground wire, backfilling, restoration, or any other necessary hardware and will consider them incidental to this item of work. | | | | | | | | | | | | | | | |
| Subsection: | 723.05 PAYMENT. | | | | | | | | | | | | | | | |
| Revision: | Replace items 04810-04811, 20391NS835 and, 20392NS835 under <u>Code</u> , <u>Pay Item</u> , and <u>Pay Unit</u> with the following: | | | | | | | | | | | | | | | |
| | <table border="0"> <thead> <tr> <th><u>Code</u></th> <th><u>Pay Item</u></th> <th><u>Pay Unit</u></th> </tr> </thead> <tbody> <tr> <td>04810</td> <td>Electrical Junction Box</td> <td>Each</td> </tr> <tr> <td>04811</td> <td>Electrical Junction Box Type B</td> <td>Each</td> </tr> <tr> <td>20391NS835</td> <td>Electrical Junction Box Type A</td> <td>Each</td> </tr> <tr> <td>20391NS835</td> <td>Electrical Junction Box Type C</td> <td>Each</td> </tr> </tbody> </table> | <u>Code</u> | <u>Pay Item</u> | <u>Pay Unit</u> | 04810 | Electrical Junction Box | Each | 04811 | Electrical Junction Box Type B | Each | 20391NS835 | Electrical Junction Box Type A | Each | 20391NS835 | Electrical Junction Box Type C | Each |
| <u>Code</u> | <u>Pay Item</u> | <u>Pay Unit</u> | | | | | | | | | | | | | | |
| 04810 | Electrical Junction Box | Each | | | | | | | | | | | | | | |
| 04811 | Electrical Junction Box Type B | Each | | | | | | | | | | | | | | |
| 20391NS835 | Electrical Junction Box Type A | Each | | | | | | | | | | | | | | |
| 20391NS835 | Electrical Junction Box Type C | Each | | | | | | | | | | | | | | |
| Subsection: | 813.04 Gray Iron Castings. | | | | | | | | | | | | | | | |
| Revision: | Replace the reference to "AASHTO M105" with "ASTM A48". | | | | | | | | | | | | | | | |
| Subsection: | 813.09.02 High Strength Steel Bolts, Nuts, and Washers. | | | | | | | | | | | | | | | |
| Number: | A) Bolts. | | | | | | | | | | | | | | | |
| Revision: | Delete first paragraph and "Hardness Number" Table. Replace with the following: A) Bolts. Conform to ASTM A325 (AASHTO M164) or ASTM A490 (AASHTO 253) as applicable. | | | | | | | | | | | | | | | |
| Subsection: | 814.04.02 Timber Guardrail Posts. | | | | | | | | | | | | | | | |
| Revision: | Third paragraph, replace the reference to "AWPA C14" with "AWPA U1, Section B, Paragraph 4.1". | | | | | | | | | | | | | | | |
| Subsection: | 814.04.02 Timber Guardrail Posts. | | | | | | | | | | | | | | | |
| Revision: | Replace the first sentence of the fourth paragraph with the following: Use any of the species of wood for round or square posts covered under AWPA U1. | | | | | | | | | | | | | | | |
| Subsection: | 814.04.02 Timber Guardrail Posts. | | | | | | | | | | | | | | | |
| Revision: | Fourth paragraph, replace the reference to "AWPA C2" with "AWPA U1, Section B, Paragraph 4.1". | | | | | | | | | | | | | | | |
| Subsection: | 814.04.02 Timber Guardrail Posts. | | | | | | | | | | | | | | | |
| Revision: | Delete the second sentence of the fourth paragraph. | | | | | | | | | | | | | | | |
| Subsection: | 816.07.02 Wood Posts and Braces. | | | | | | | | | | | | | | | |
| Revision: | First paragraph, replace the reference to "AWPA C5" with "AWPA U1, Section B, Paragraph 4.1". | | | | | | | | | | | | | | | |

**Supplemental Specifications to the
Standard Specifications for Road and Bridge Construction, 2012 Edition
Effective with the September 27, 2013 Letting**

| | |
|--------------------|---|
| Subsection: | 816.07.02 Wood Posts and Braces. |
| Revision: | Delete the second sentence of the first paragraph. |
| Subsection: | 818.07 Preservative Treatment. |
| Revision: | First paragraph, replace all references to "AWPA C14" with "AWPA U1, Section A". |
| Subsection: | 834.14 LIGHTING POLES. |
| Revision: | Replace the first sentence with the following: Lighting pole design shall be in accordance with loading and allowable stress requirements of the AASHTO Standard Specifications for Structural Supports for Highway Signs, Luminaires, and Traffic Signals, 2013-6th Edition with current interims. |
| Subsection: | 834.14.03 High Mast Poles. |
| Revision: | <p>*Remove the second and fourth sentence from the first paragraph.</p> <p>*Replace the third paragraph with the following: Provide calculations and drawings that are stamped by a Professional Engineer licensed in the Commonwealth of Kentucky.</p> <p>*Replace paragraph six with the following: Provide a pole section that conforms to ASTM A 595 grade A with a minimum yield strength of 55 KSI or ASTM A 572 with a minimum yield strength of 55 KSI. Use tubes that are round or 16 sided with a four inch corner radius, have a constant linear taper of .144 in/ft and contain only one longitudinal seam weld. Circumferential welded tube butt splices and laminated tubes are not permitted. Provide pole sections that are telescopically slip fit assembled in the field to facilitate inspection of interior surface welds and the protective coating. The minimum length of the telescopic slip splices shall be 1.5 times the inside diameter of the exposed end of the female section. Use longitudinal seam welds as commended in Section 5.15 of the AASHTO 2013 Specifications. The thickness of the transverse base shall not be less than 2 inches. Plates shall be integrally welded to the tubes with a telescopic welded joint or a full penetration groove weld with backup bar.</p> <p>The handhole cover shall be removable from the handhole frame. One the frame side opposite the hinge, provide a mechanism on the handhole cover/frame to place the Department's standard padlock as specified in Section 834.25. The handhole frame shall have two stainless studs installed opposite the hinge to secure the handhole cover to the frame which includes providing stainless steel wing nuts and washers. The handhole cover shall be manufactured from 0.25 inch thick galvanized steel (ASTM A 153) and have a neoprene rubber gasket that is permanently secured to the handhole frame to insure weather-tight protection. The hinge shall be manufactured from 7-guage stainless steel to provide adjustability to insure weather-tight fit for the cover. The minimum clear distance between the transverse plate and the</p> <p>bottom opening of the handhole shall not be less than the diameter of the bottom tube of the pole but needs to be at least 15 inches. The handhole frame width shall be 0.4 times the diameter of the bottom tube.</p> <p>Provide products that are hot-dip galvanized to the requirements of either ASTM A123 (fabricated products) or ASTM A 153 (hardware items).</p> |
| Subsection: | 834.16 ANCHOR BOLTS. |
| Revision: | Insert the following sentence at the beginning of the paragraph: The anchor bolt design shall follow the NCHRP Report 494 Section 2.4 and NCHRP 469 Appendix A Specifications. |

**Supplemental Specifications to the
Standard Specifications for Road and Bridge Construction, 2012 Edition
Effective with the September 27, 2013 Letting**

| | |
|--------------------|--|
| Subsection: | 834.17.01 Conventional. |
| Revision: | Add the following sentence after the second sentence: Provide a waterproof sticker mounted on the bottom of the housing that is legible from the ground and indicates the wattage of the fixture by providing the fist to numbers of the wattage. |
| Subsection: | 834.21.01 Waterproof Enclosures. |
| Revision: | *Add the following sentence in the second paragraph in the thirteenth sentence: Provide a cabinet door with a louvered air vent, Filter-retaining brackets and an easy clean metal filter. *Replace sentence sixteen with the following: Use a 120-volt fixture and utilize a compact fluorescent or L.E.D. bulb (equivalent to 60 watt minimum). |
| Subsection: | 835.07 Traffic Poles. |
| Revision: | Replace the first sentence of the first paragraph with the following: Pole diameter and wall thickness shall be calculated in accordance with the AASHTO Standard Specifications for Structural Supports for Highway Signs, Luminaires, and Traffic Signals, 2013-6th Edition with current interims. |
| Subsection: | 835.07 Traffic Poles. |
| Revision: | *Replace the first sentence of the fourth paragraph with the following: Ensure transverse plats have a thickness ≥ 2 inches. *Add the following sentence to the end of the fourth paragraph: The bottom pole diameter shall not be less than 16.25 inches. |
| Subsection: | 835.07 Traffic Poles. |
| Revision: | Replace the second sentence of the fifth paragraph with the following: For anchor bolt design, pole forces shall be positioned in such a manner to maximize the force on any individual anchor bolt regardless of the actual anchor bolt orientation with the pole. |
| Subsection: | 835.07 Traffic Poles. |
| Revision: | Replace the first and second sentence of the sixth paragraph with the following: The pole handhole shall be 25 inches by 6.5 inches. The handhole cover shall be removable from the handhole frame. On the frame side opposite the hinge, provide a mechanism on the handhole cover/frame to place the Department's standard padlock as specified in Section 834.25. The handhole frame shall have two stainless studs installed opposite the hinge to secure the handhole cover to the frame which includes providing stainless steel wing nuts and washers. The handhole cover shall be manufactured from 0.25 inch thick galvanized steel (ASTM 153) and have a neoprene rubber gasket that is permanently secured to the handhole frame to insure weather-tight protection. The hinge shall be manufactured from 7 gauge stainless steel to provide adjustability to insure a weather-tight fit for the cover. The minimum clear distance between the transverse plate and the bottom opening of the handhole shall not be less than the diameter of the bottom tube but needs to be at least 12 inches. |
| Subsection: | 835.07 Traffic Poles. |
| Revision: | *Replace the first sentence of the last paragraph with the following: Provide calculations and drawings that are stamped by a Professional Engineer licensed in the Commonwealth of Kentucky. *Replace the third sentence of the last paragraph with the following: All tables referenced in 835.07 are found in the AASHTO Standard Specifications for Structural Supports for Highway Signs, Luminaires, and Traffic Signals, 2013-6th Edition with current interims. |

**Supplemental Specifications to the
Standard Specifications for Road and Bridge Construction, 2012 Edition
Effective with the September 27, 2013 Letting**

| | |
|--------------------|--|
| Subsection: | 835.07.01 Steel Strain Poles. |
| Revision: | Replace the second sentence of the second paragraph with the following: The detailed analysis shall be certified by a Professional Engineer licensed in the Commonwealth of Kentucky. |
| Subsection: | 835.07.01 Steel Strain Poles. |
| Revision: | Replace number 7. after the second paragraph with the following: 7. Fatigue calculations should be shown for all fatigue related connections. Provide the corresponding detail, stress category and example from table 11.9.3.1-1. |
| Subsection: | 835.07.02 Mast Arm Poles. |
| Revision: | Replace the second sentence of the fourth paragraph with the following: The detailed analysis shall be certified by a Professional Engineer licensed in the Commonwealth of Kentucky. |
| Subsection: | 835.07.02 Mast Arm Poles. |
| Revision: | Replace number 7) after the fourth paragraph with the following: 7) Fatigue calculations should be shown for all fatigue related connections. Provide the corresponding detail, stress category and example from table 11.9.3.1-1. |
| Subsection: | 835.07.03 ANCHORS. |
| Revision: | Add the following to the end of the paragraph: There shall be two steel templates (one can be used for the headed part of the anchor bolt when designed in this manner) provided per pole. Templates shall be contained within a 26.5 inch diameter. All templates shall be fully galvanized (ASTM A 153). |
| Subsection: | 835.16.05 Optical Units. |
| Revision: | Replace the 3rd paragraph with the following: The list of certified products can be found on the following website: http://www.intertek.com . |
| Subsection: | 835.19.01 Pedestrian Detector Body. |
| Revision: | Replace the first sentence with the following: Provide a four holed pole mounted aluminum rectangular housing that is a compatible with the pedestrian detector. |

SPECIAL NOTE FOR TURF REINFORCING MAT

1.0 DESCRIPTION. Install turf reinforcement mat at locations specified in the Contract or as the Engineer directs. Section references herein are to the Department's 2008 Standard Specifications for Road and Bridge Construction.

2.0 MATERIALS.

2.1 Turf Reinforcement Mat (TRM). Use a Turf Reinforcement Mat defined as permanent rolled erosion control product composed of non-degradable synthetic fibers, filaments, nets, wire mesh and/or other elements, processed into a three-dimensional matrix of sufficient thickness and from the Department's List of Approved Materials. Mats must be 100% UV stabilized materials. For TRMs containing degradable components, all physical property values must be obtained on the non-degradable portion of the matting exclusively. Ensure product labels clearly show the manufacturer or supplier name, style name, and roll number. Ensure labeling, shipment and storage follows ASTM D-4873. The Department will require manufacturer to provide TRMs that are machine constructed web of mechanically or melt bonded nondegradable fibers entangled to form a three dimensional matrix. The Department will require all long term performance property values in table below to be based on non degradable portion of the matting alone. Approved methods include polymer welding, thermal or polymer fusion, or placement of fibers between two high strength biaxially oriented nets mechanically bound by parallel stitching with polyolefin thread. Ensure that mats designated in the plans as Type 4 mats, are not to be manufactured from discontinuous or loosely held together by stitching or glued netting or composites. Type 4 mats shall be composed of geosynthetic matrix that exhibits a very high interlock and reinforcement capacities with both soil and root systems and with high tensile modulus. The Department will require manufacturer to use materials chemically and biologically inert to the natural soil environments conditions. Ensure the blanket is smolder resistant without the use of chemical additives. When stored, maintain the protective wrapping and elevate the mats off the ground to protect them from damage. The Department will not specify these materials for use in heavily acidic coal seam areas or other areas with soil problems that would severally limit vegetation growth.

- A) Dimensions. Ensure TRMs are furnished in strips with a minimum width of 4 feet and length of 50 feet.
- B) Weight. Ensure that all mat types have a minimum mass per unit area of 7 ounces per square yard according to ASTM D 6566.
- C) Performance Testing: The Department will require AASHTO's NTPEP index testing. The Department will also require the manufacturer to perform internal MARV testing at a Geosynthetic Accreditation Institute – Laboratory Accreditation Program (GAI-LAP) accredited laboratory for tensile strength, tensile elongation, mass per unit area, and thickness once every 24,000 yds of production or whatever rate is required to ensure 97.7% confidence under ASTM D4439& 4354. The Department will require Full scale testing for slope and channel applications shear stress shall be done under ASTM D 6459, ASTM D 6460-07 procedures.

2.2 Classifications

The basis for selection of the type of mat required will be based on the long term shear stress level of the mat of the channel in question or the degree of slope to protect and will be designated in the contract. The Type 4 mats are to be used at structural backfills protecting critical

structures, utility cuts, areas where vehicles may be expected to traverse the mat, channels with large heavy drift, and where higher factors of safety, very steep slopes and/or durability concerns are needed as determined by project team and designer and will be specified in the plans by designer.

| Turf Reinforcement Matting | | | | | |
|--|---------------------|-----------------------|---------------------|-----------------------|---|
| Properties ¹ | Type 1 | Type 2 | Type 3 | Type 4 | Test Method |
| Minimum tensile Strength lbs/ft | 125 | 150 | 175 | 3000 by 1500 | ASTM D6818 ² |
| UV stability (minimum % tensile retention) | 80 | 80 | 80 | 90 | ASTM D4355 ³ (1000-hr exposure) |
| Minimum thickness (inches) | 0.25 | 0.25 | 0.25 | 0.40 | ASTM D6525 |
| Slopes applications | 2H:1V or flatter | 1.5H:1V or flatter | 1H:1V or flatter | 1 H: 1V or greater | |
| Shear stress lbs/ft ² Channel applications | 6.0 ⁴ | 8.0 ⁴ | 10.0 ⁴ | 12.0 ⁴ | ASTM D6459 ASTM D6460-07 |

¹ For TRMs containing degradable components, all physical property values must be obtained on the non-degradable portion of the matting alone.

²Minimum Average Roll Values for tensile strength of sample material machine direction.

³Tensile Strength percentage retained after stated 1000 hr duration of exposure under ASTM D4355 testing. Based on nondegradable components exclusively.

⁴Maximum permissible shear design values based on short-term (0.5 hr) vegetated data obtained by full scale flume testing ASTM D6459, D6460-07. Based on nondegradable components exclusively. Testing will be done at Independent Hydraulics Facility such as Colorado State University hydraulics laboratory, Utah State University hydraulics laboratory, Texas Transportation Institute (TTI) hydraulics and erosion control laboratory.

2.3 Quality Assurance Sampling, Testing, and Acceptance

- A) Provide TRM listed on the Department’s List of Approved Materials. Prior to inclusion on the LAM, the manufacturer of TRM must meet the physical and performance criteria as outlined in the specification and submit a Letter Certifying compliance of the product under the above ASTM testing procedures and including a copy of report from Full Scale Independent Hydraulics Facility that Fully Vegetated Shear Stress meets shear stress requirements tested under D6459 and D6460-07.
- B) Contractors will provide a Letter of Certification from Manufacturer stating the product name, manufacturer, and that the product MARV product unit testing results meets Department criteria. Provide Letters once per project and for each product.
- C) Acceptance shall be in accordance with ASTM D-4759 based on testing performed by a Geosynthetic Accreditation Institute – Laboratory Accreditation Program (GAI-LAP) accredited laboratory using Procedure A of ASTM D-4354.

Current mats meeting the above criteria are shown on the Department's List of Approved Materials.

2.4 Fasteners. When the mat manufacturer does not specify a specific fastener, use steel wire U-shaped staples with a minimum diameter of 0.09 inches (11 gauge), a minimum width of one inch and a minimum length of 12 inches. Use a heavier gauge when working in rocky or clay soils and longer lengths in sandy soils as directed by Engineer or Manufacturer's Representative. Provide staples with colored tops when requested by the Engineer.

3.0 CONSTRUCTION. When requested by the Engineer, provide a Manufacturer's Representative on-site to oversee and approve the initial installation of the mat. When requested by the Engineer, provide a letter from the Manufacturer approving the installation. When there is a conflict between the Department's criteria and the Manufacturer's criteria, construct using the more restrictive. The Engineer and Manufacturer's Representative must approve all alternate installation methods prior to execution. Construct according to the Manufacturer's recommendations and the following as minimum installation technique:

3.1 Site Preparation. Grade areas to be treated with matting and compact. Remove large rocks, soil clods, vegetation, roots, and other sharp objects that could keep the mat from intimate contact with subgrade. Prepare seedbed by loosening the top 2 to 3 inch of soil.

3.2 Installation. Install mats according to Standard Drawing Sepias "Turf Mat Channel Installation" and "Turf Mat Slope Installation." Install mats at the specified elevation and alignment. Anchor the mats with staples with a minimum length of 12 inches. Use longer anchors for installations in sandy, loose, or wet soils as directed by the Engineer or Manufacturer's Representative. The mat should be in direct contact with the soil surface.

4.0 MEASUREMENT. The Department will measure the quantity of Turf Reinforcement Mat by the square yard of surface covered. The Department will not measure preparation of the bed, providing a Manufacturer's Representative, topsoil, or seeding for payment and will consider them incidental to the Turf Reinforcement Mat. The Department will not measure any reworking of slopes or channels for payment as it is considered corrective work and incidental to the Turf Reinforcement Mat. Seeding and protection will be an incidental item.

5.0 PAYMENT. The Department will make payment for the completed and accepted quantities under the following:

| <u>Code</u> | <u>Pay Item</u> | <u>Pay Unit</u> |
|-------------|--------------------------|-----------------|
| 23274EN11F | Turf Reinforcement Mat 1 | Square Yard |
| 23275EN11F | Turf Reinforcement Mat 2 | Square Yard |
| 23276EN11F | Turf Reinforcement Mat 3 | Square Yard |
| 23277EN11F | Turf Reinforcement Mat 4 | Square Yard |

April 18, 2009

PART III

EMPLOYMENT, WAGE AND RECORD REQUIREMENTS

TRANSPORTATION CABINET DEPARTMENT OF HIGHWAYS

LABOR AND WAGE REQUIREMENTS APPLICABLE TO OTHER THAN FEDERAL-AID SYSTEM PROJECTS

- I. Application
- II. Nondiscrimination of Employees (KRS 344)
- III. Payment of Predetermined Minimum Wages
- IV. Statements and Payrolls

I. APPLICATION

1. These contract provisions shall apply to all work performed on the contract by the contractor with his own organization and with the assistance of workmen under his immediate superintendence and to all work performed on the contract by piecework, station work or by subcontract. The contractor's organization shall be construed to include only workmen employed and paid directly by the contractor and equipment owned or rented by him, with or without operators.

2. The contractor shall insert in each of his subcontracts all of the stipulations contained in these Required Provisions and such other stipulations as may be required.

3. A breach of any of the stipulations contained in these Required Provisions may be grounds for termination of the contract.

II. NONDISCRIMINATION OF EMPLOYEES

AN ACT OF THE KENTUCKY GENERAL ASSEMBLY TO PREVENT DISCRIMINATION IN EMPLOYMENT KRS CHAPTER 344 EFFECTIVE JUNE 16, 1972

The contract on this project, in accordance with KRS Chapter 344, provides that during the performance of this contract, the contractor agrees as follows:

1. The contractor shall not fail or refuse to hire, or shall not discharge any individual, or otherwise discriminate against an individual with respect to his compensation, terms, conditions, or privileges of employment, because of such individual's race, color, religion, national origin, sex, disability or age (between forty and seventy); or limit, segregate, or classify his employees in any way which would deprive or tend to deprive an individual of employment opportunities or otherwise adversely affect his status as an employee, because of such individual's race, color, religion, national origin, sex, disability or age (between forty and seventy). The contractor agrees to post in conspicuous places, available to employees and applicants for employment, notices to be provided setting forth the provisions of this nondiscrimination clause.

2. The contractor shall not print or publish or cause to be printed or published a notice or advertisement relating to employment by such an employer or membership in or any classification or referral for employment by the employment agency, indicating any preference, limitation, specification, or discrimination, based on race, color, religion, national origin, sex, disability or age (between forty and seventy), except that such notice or advertisement may indicate a preference, limitation, or specification based on religion, or national origin when religion, or national origin is a bona fide occupational qualification for employment.

3. If the contractor is in control of apprenticeship or other training or retraining, including on-the-job training programs, he shall not discriminate against an individual

because of his race, color, religion, national origin, sex, disability or age (between forty and seventy), in admission to, or employment in any program established to provide apprenticeship or other training.

4. The contractor will send to each labor union or representative of workers with which he has a collective bargaining agreement or other contract or understanding, a notice to be provided advising the said labor union or workers' representative of the contractor's commitments under this section, and shall post copies of the notice in conspicuous places available to employees and applicants for employment. The contractor will take such action with respect to any subcontract or purchase order as the administering agency may direct as a means of enforcing such provisions, including sanctions for non-compliance.

III. PAYMENT OF PREDETERMINED MINIMUM WAGES

1. These special provisions are supplemented elsewhere in the contract by special provisions which set forth certain predetermined minimum wage rates. The contractor shall pay not less than those rates.

2. The minimum wage determination schedule shall be posted by the contractor, in a manner prescribed by the Department of Highways, at the site of the work in prominent places where it can be easily seen by the workers.

IV. STATEMENTS AND PAYROLLS

1. All contractors and subcontractors affected by the terms of KRS 337.505 to 337.550 shall keep full and accurate payroll records covering all disbursements of wages to their employees to whom they are required to pay not less than the prevailing rate of wages. Payrolls and basic records relating thereto will be maintained during the course of the work and preserved for a period of one (1) year from the date of completion of this contract.

2. The payroll records shall contain the name, address and social security number of each employee, his correct classification, rate of pay, daily and weekly number of hours worked, itemized deductions made and actual wages paid.

3. The contractor shall make his daily records available at the project site for inspection by the State Department of Highways contracting office or his authorized representative.

Periodic investigations shall be conducted as required to assure compliance with the labor provisions of the contract. Interrogation of employees and officials of the contractor shall be permitted during working hours.

Aggrieved workers, Highway Managers, Assistant District Engineers, Resident Engineers and Project Engineers shall report all complaints and violations to the Division of Contract Procurement.

The contractor shall be notified in writing of apparent violations. The contractor may correct the reported violations and notify the Department of Highways of the action taken or may request an informal hearing. The request for hearing shall be in writing within ten (10) days after receipt of the notice of the reported violation. The contractor may submit

records and information which will aid in determining the true facts relating to the reported violations.

Any person or organization aggrieved by the action taken or the findings established as a result of an informal hearing by the Division of Contract Procurement may request a formal hearing.

4. The wages of labor shall be paid in legal tender of the United States, except that this condition will be considered satisfied if payment is made by a negotiable check, on a solvent bank, which may be cashed readily by the employee in the local community for the full amount, without discount or collection charges of any kind. Where checks are used for payments, the contractor shall make all necessary arrangements for them to be cashed and shall give information regarding such arrangements.

5. No fee of any kind shall be asked or accepted by the contractor or any of his agents from any person as a condition of employment on the project.

6. No laborers shall be charged for any tools used in performing their respective duties except for reasonably avoidable loss or damage thereto.

7. Every employee on the work covered by this contract shall be permitted to lodge, board, and trade where and with whom he elects and neither the contractor nor his agents, nor his employees shall directly or indirectly require as a condition of employment that an employee shall lodge, board or trade at a particular place or with a particular person.

8. Every employee on the project covered by this contract shall be an employee of either the prime contractor or an approved subcontractor.

9. No charge shall be made for any transportation furnished by the contractor or his agents to any person employed on the work.

10. No individual shall be employed as a laborer or mechanic on this contract except on a wage basis, but this shall not be construed to prohibit the rental of teams, trucks or other equipment from individuals.

No Covered employee may be employed on the work except in accordance with the classification set forth in the schedule mentioned above; provided, however, that in the event additional classifications are required, application shall be made by the contractor to the Department of Highways and (1) the Department shall request appropriate classifications and rates from the proper agency, or (2) if there is urgent need for additional classification to avoid undue delay in the work, the contractor may employ such workmen at rates deemed comparable to rates established for similar classifications provided he has made written application through the Department of Highways, addressed to the proper agency, for the supplemental rates. The contractor shall retroactively adjust, upon receipt of the supplemental rates schedule, the wages of any employee paid less than the established rate and may adjust the wages of any employee overpaid.

11. No contractor or subcontractor contracting for any part of the contract work which may require or involve the employment of laborers or mechanics shall require or permit any laborer or mechanic in any work-week in which he is employed on such work, to work in excess of eight hours in any calendar day or in excess of forty hours in such work-week unless such laborer or mechanic receives compensation at a rate not less than one and one half times his basic rate of pay for all hours worked in excess of eight hours in any calendar day or in excess of forty hours in such work-week. A laborer, workman or mechanic and an employer may enter into a written agreement or a collective bargaining agreement to work more than eight (8) hours a calendar day but not more than ten (10) hours a calendar day for the straight time hourly rate. This agreement shall be in writing and shall be executed prior to the employee working in excess of eight (8) hours, but not more than ten (10) hours, in any one (1) calendar day.

12. Payments to the contractor may be suspended or withheld due to failure of the contractor to pay any laborer or

mechanic employed or working on the site of the work, all or part of the wages required under the terms of the contract. The Department may suspend or withhold payments only after the contractor has been given written notice of the alleged violation and the contractor has failed to comply with the wage determination of the Department of Highways.

13. Contractors and subcontractors shall comply with the sections of Kentucky Revised Statutes, Chapter 337 relating to contracts for Public Works.

Revised 2-16-95

EXECUTIVE BRANCH CODE OF ETHICS

In the 1992 regular legislative session, the General Assembly passed and Governor Brereton Jones signed Senate Bill 63 (codified as KRS 11A), the Executive Branch Code of Ethics, which states, in part:

KRS 11A.040 (6) provides:

No present or former public servant shall, within six (6) months of following termination of his office or employment, accept employment, compensation or other economic benefit from any person or business that contracts or does business with the state in matters in which he was directly involved during his tenure. This provision shall not prohibit an individual from returning to the same business, firm, occupation, or profession in which he was involved prior to taking office or beginning his term of employment, provided that, for a period of six (6) months, he personally refrains from working on any matter in which he was directly involved in state government. This subsection shall not prohibit the performance of ministerial functions, including, but not limited to, filing tax returns, filing applications for permits or licenses, or filing incorporation papers.

KRS 11A.040 (8) states:

A former public servant shall not represent a person in a matter before a state agency in which the former public servant was directly involved, for a period of one (1) year after the latter of:

- a) The date of leaving office or termination of employment; or
- b) The date the term of office expires to which the public servant was elected.

This law is intended to promote public confidence in the integrity of state government and to declare as public policy the idea that state employees should view their work as a public trust and not as a way to obtain private benefits.

If you have worked for the executive branch of state government within the past six months, you may be subject to the law's prohibitions. The law's applicability may be different if you hold elected office or are contemplating representation of another before a state agency.

Also, if you are affiliated with a firm which does business with the state and which employs former state executive-branch employees, you should be aware that the law may apply to them.

In case of doubt, the law permits you to request an advisory opinion from the Executive Branch Ethics Commission, Room 136, Capitol Building, 700 Capitol Avenue, Frankfort, Kentucky 40601; telephone (502) 564-7954.

Kentucky Equal Employment Opportunity Act of 1978

The requirements of the Kentucky Equal Employment Opportunity Act of 1978 (KRS 45.560-45.640) shall apply to this Contract. The apparent low Bidder will be required to submit EEO forms to the Division of Construction Procurement, which will then forward to the Finance and Administration Cabinet for review and approval. No award will become effective until all forms are submitted and EEO/CC has certified compliance. The required EEO forms are as follows:

- EEO-1: Employer Information Report
- Affidavit of Intent to Comply
- Employee Data Sheet
- Subcontractor Report

These forms are available on the Finance and Administration's web page under ***Vendor Information, Standard Attachments and General Terms*** at the following address:
<https://www.eProcurement.ky.gov>.

Bidders currently certified as being in compliance by the Finance and Administration Cabinet may submit a copy of their approval letter in lieu of the referenced EEO forms.

For questions or assistance please contact the Finance and Administration Cabinet by email at **finance.contractcompliance@ky.gov** or by phone at 502-564-2874.

General Decision Number: KY130100 11/01/2013 KY100

Superseded General Decision Number: KY20120125

State: Kentucky

Construction Type: Highway

Counties: Anderson, Bath, Bourbon, Boyd, Boyle, Bracken, Breckinridge, Bullitt, Carroll, Carter, Clark, Elliott, Fayette, Fleming, Franklin, Gallatin, Grant, Grayson, Greenup, Hardin, Harrison, Henry, Jefferson, Jessamine, Larue, Lewis, Madison, Marion, Mason, Meade, Mercer, Montgomery, Nelson, Nicholas, Oldham, Owen, Robertson, Rowan, Scott, Shelby, Spencer, Trimble, Washington and Woodford Counties in Kentucky.

HIGHWAY CONSTRUCTION PROJECTS (excluding tunnels, building structures in rest area projects & railroad construction; bascule, suspension & spandrel arch bridges designed for commercial navigation, bridges involving marine construction; and other major bridges).

| Modification Number | Publication Date |
|---------------------|------------------|
| 0 | 01/04/2013 |
| 1 | 01/11/2013 |
| 2 | 02/22/2013 |
| 3 | 04/26/2013 |
| 4 | 05/31/2013 |
| 5 | 06/07/2013 |
| 6 | 06/14/2013 |
| 7 | 06/21/2013 |
| 8 | 06/28/2013 |
| 9 | 07/05/2013 |
| 10 | 07/19/2013 |
| 11 | 08/30/2013 |
| 12 | 09/20/2013 |
| 13 | 09/27/2013 |
| 14 | 11/01/2013 |

BRIN0004-003 06/01/2011

BRECKENRIDGE COUNTY

| | Rates | Fringes |
|-----------------|----------|---------|
| BRICKLAYER..... | \$ 24.11 | 10.07 |

BRKY0001-005 06/01/2013

BULLITT, CARROLL, GRAYSON, HARDIN, HENRY, JEFFERSON, LARUE, MARION, MEADE, NELSON, OLDHAM, SHELBY, SPENCER, & TRIMBLE COUNTIES:

| Rates | Fringes |
|-------|---------|
|-------|---------|

BRICKLAYER.....\$ 24.82 10.71

BRKY0002-006 06/01/2011

BRACKEN, GALLATIN, GRANT, MASON & ROBERTSON COUNTIES:

Rates Fringes

BRICKLAYER.....\$ 26.57 10.26

BRKY0007-004 06/01/2011

BOYD, CARTER, ELLIOT, FLEMING, GREENUP, LEWIS & ROWAN COUNTIES:

Rates Fringes

BRICKLAYER.....\$ 28.29 16.80

BRKY0017-004 06/01/2009

ANDERSON, BATH, BOURBON, BOYLE, CLARK, FAYETTE, FRANKLIN,
HARRISON, JESSAMINE, MADISON, MERCER, MONTGOMERY, NICHOLAS,
OWEN, SCOTT, WASHINGTON & WOODFORD COUNTIES:

Rates Fringes

BRICKLAYER.....\$ 24.11 9.97

CARP0064-001 04/01/2013

Rates Fringes

CARPENTER.....\$ 26.90 14.46
Diver.....\$ 40.73 14.46
PILEDRIVERMAN.....\$ 27.15 14.46

ELEC0212-008 06/03/2013

BRACKEN, GALLATIN and GRANT COUNTIES

Rates Fringes

ELECTRICIAN.....\$ 26.35 16.09

ELEC0212-014 07/01/2013

BRACKEN, GALLATIN & GRANT COUNTIES:

Rates Fringes

Sound & Communication
Technician.....\$ 22.50 9.51

* ELEC0317-012 05/29/2013

BOYD, CARTER, ELLIOT & ROWAN COUNTIES:

| | Rates | Fringes |
|-------------------------|----------|---------|
| Electricians: | | |
| Cable Splicer..... | \$ 32.68 | 18.13 |
| Electrician..... | \$ 32.22 | 20.84 |
| ----- | | |
| ELEC0369-007 05/29/2013 | | |

ANDERSON, BATH, BOURBON, BOYLE, BRECKINRIDGE, BULLITT, CARROLL,
 CLARK, FAYETTE, FRAONKLIN, GRAYSON, HARDIN, HARRISON, HENRY,
 JEFFERSON, JESSAMINE, LARUE, MADISON, MARION, MEADE, MERCER,
 MONTGOMERY, NELSON, NICHOLAS, OLDHAM, OWEN, ROBERTSON, SCOTT,
 SHELBY, SPENCER, TRIMBLE, WASHINGTON, & WOODFORD COUNTIES:

| | Rates | Fringes |
|-------------------------|----------|---------|
| ELECTRICIAN..... | \$ 29.48 | 14.37 |
| ----- | | |
| ELEC0575-002 12/31/2012 | | |

FLEMING, GREENUP, LEWIS & MASON COUNTIES:

| | Rates | Fringes |
|-------------------------|----------|---------|
| ELECTRICIAN..... | \$ 31.20 | 13.55 |
| ----- | | |
| ENGI0181-018 07/01/2013 | | |

| | Rates | Fringes |
|---------------------|----------|---------|
| Operating Engineer: | | |
| GROUP 1..... | \$ 28.00 | 13.90 |
| GROUP 2..... | \$ 25.45 | 13.90 |
| GROUP 3..... | \$ 25.85 | 13.90 |
| GROUP 4..... | \$ 25.17 | 13.90 |

OPERATING ENGINEER CLASSIFICATIONS

GROUP 1 - A-Frame Winch Truck; Auto Patrol; Backfiller;
 Batcher Plant; Bituminous Paver; Bituminous Transfer
 Machine; Boom Cat; Bulldozer; Mechanic; Cableway; Carry-All
 Scoop; Carry Deck Crane; Central Compressor Plant; Cherry
 Picker; Clamshell; Concrete Mixer (21 cu. ft. or Over);
 Concrete Paver; Truck-Mounted Concrete Pump; Core Drill;
 Crane; Crusher Plant; Derrick; Derrick Boat; Ditching &
 Trenching Machine; Dragline; Dredge Operator; Dredge
 Engineer; Elevating Grader & Loaders; Grade-All; Gurries;
 Heavy Equipment Robotics Operator/Mechanic; High Lift;
 Hoe-Type Machine; Hoist (Two or More Drums); Hoisting
 Engine (Two or More Drums); Horizontal Directional Drill
 Operator; Hydrocrane; Hyster; KeCal Loader; LeTourneau;
 Locomotive; Mechanic; Mechanically Operated Laser Screed;
 Mechanic Welder; Mucking Machine; Motor Scraper; Orangepeel
 Bucket; Overhead Crane; Piledriver; Power Blade; Pumpcrete;

Push Dozer; Rock Spreader, attached to equipment; Rotary Drill; Roller (Bituminous); Rough Terrain Crane; Scarifier; Scoopmobile; Shovel; Side Boom; Subgrader; Tailboom; Telescoping Type Forklift; Tow or Push Boat; Tower Crane (French, German & other types); Tractor Shovel; Truck Crane; Tunnel Mining Machines, including Moles, Shields or similar types of Tunnel Mining Equipment

GROUP 2 - Air Compressor (Over 900 cu. ft. per min.); Bituminous Mixer; Boom Type Tamping Machine; Bull Float; Concrete Mixer (Under 21 cu. ft.); Dredge Engineer; Electric Vibrator; Compactor/Self-Propelled Compactor; Elevator (One Drum or Buck Hoist); Elevator (When used to Hoist Building Material); Finish Machine; Firemen & Hoist (One Drum); Flexplane; Forklift (Regardless of Lift Height); Form Grader; Joint Sealing Machine; Outboard Motor Boat; Power Sweeper (Riding Type); Roller (Rock); Ross Carrier; Skid Mounted or Trailer Mounted Concrete Pump; Skid Steer Machine with all Attachments; Switchman or Brakeman; Throttle Valve Person; Tractair & Road Widening Trencher; Tractor (50 H.P. or Over); Truck Crane Oiler; Tugger; Welding Machine; Well Points; & Whirley Oiler

GROUP 3 - All Off Road Material Handling Equipment, including Articulating Dump Trucks; Greaser on Grease Facilities servicing Heavy Equipment

GROUP 4 - Bituminous Distributor; Burlap & Curing Machine; Cement Gun; Concrete Saw; Conveyor; Deckhand Oiler; Grout Pump; Hydraulic Post Driver; Hydro Seeder; Mud Jack; Oiler; Paving Joint Machine; Power Form Handling Equipment; Pump; Roller (Earth); Steerman; Tamping Machine; Tractor (Under 50 H.P.); & Vibrator

CRANES - with booms 150 ft. & Over (Including JIB), and where the length of the boom in combination with the length of the piling leads equals or exceeds 150 ft. - \$1.00 over Group 1 rate

EMPLOYEES ASSIGNED TO WORK BELOW GROUND LEVEL ARE TO BE PAID 10% ABOVE BASIC WAGE RATE. THIS DOES NOT APPLY TO OPEN CUT WORK.

IRON0044-009 06/01/2013

BRACKEN, GALLATIN, GRANT, HARRISON, ROBERTSON,
BOURBON (Northern third, including Townships of Jackson, Millersburg, Ruddel Mills & Shawhan);
CARROLL (Eastern third, including the Township of Ghent);
FLEMING (Western part, excluding Townships of Beechburg, Colfax, Elizaville, Flemingsburg, Flemingsburg Junction, Foxport, Grange City, Hillsboro, Hilltop, Mount Carmel, Muses Mills, Nepton, Pecksridge, Plummers Landing, Plummers Mill, Poplar Plains, Ringos Mills, Tilton & Wallingford);
MASON (Western two-thirds, including Townships of Dover, Lewisburg, Mays Lick, Maysville, Minerva, Moranburg,

Murphysville, Ripley, Sardis, Shannon, South Ripley & Washington);
 NICHOLAS (Townships of Barefoot, Barterville, Carlisle, Ellisville, Headquarters, Henryville, Morningglory, Myers & Oakland Mills);
 OWEN (Townships of Beechwood, Bromley, Fairbanks, Holbrook, Jonesville, Long Ridge, Lusby's Mill, New, New Columbus, New Liberty, Owenton, Poplar Grove, Rockdale, Sanders, Teresita & Wheatley);
 SCOTT (Northern two-thirds, including Townships of Biddle, Davis, Delaplain, Elmville, Longlick, Muddy Ford, Oxford, Rogers Gap, Sadieville, Skinnersburg & Stonewall)

| | Rates | Fringes |
|--------------------|----------|---------|
| IRONWORKER | | |
| Fence Erector..... | \$ 22.50 | 18.40 |
| Structural..... | \$ 24.80 | 18.40 |

 IRON0070-006 06/01/2013

ANDERSON, BOYLE, BRECKINRIDGE, BULLITT, FAYETTE, FRANKLIN, GRAYSON, HARDIN, HENRY, JEFFERSON, JESSAMINE, LARUE, MADISON, MARION, MEADE, MERCER, NELSON, OLDHAM, SHELBY, SPENCER, TRIMBLE, WASHINGTON & WOODFORD
 BOURBON (Southern two-thirds, including Townships of Austerlity, Centerville, Clintonville, Elizabeth, Hutchison, Littlerock, North Middletown & Paris);
 CARROLL (Western two-thirds, including Townships of Carrollton, Easterday, English, Locust, Louis, Prestonville & Worthville);
 CLARK (Western two-thirds, including Townships of Becknerville, Flanagan, Ford, Pine Grove, Winchester & Wyandotte);
 OWEN (Eastern eighth, including Townships of Glenmary, Gratz, Monterey, Perry Park & Tacketts Mill);
 SCOTT (Southern third, including Townships of Georgetown, Great Crossing, Newtown, Stampling Ground & Woodlake);

| | Rates | Fringes |
|-----------------|----------|---------|
| IRONWORKER..... | \$ 26.47 | 19.30 |

 IRON0372-006 06/01/2013

BRACKEN, GALLATIN, GRANT, HARRISON and ROBERTSON
 BOURBON (Northern third, including Townships of Jackson, Millersburg, Ruddel Mills & Shawhan);
 CARROLL (Eastern third, including the Township of Ghent);
 FLEMING (Western part, Excluding Townships of Beechburg, Colfax, Elizaville, Flemingsburg, Flemingsburg Junction, Foxport, Grange City, Hillsboro, Hilltop, Mount Carmel, Muses Mills, Nepton, Pecksridge, Plummers Landing, Plummers Mill, Poplar Plains, Ringos Mills, Tilton & Wallingford);
 MASON (Western two-thirds, including Townships of Dover, Lewisburg, Mays Lick, Maysville, Minerva, Moranburg,

Murphysville, Ripley, Sardis, Shannon, South Ripley & Washington);
 NICHOLAS (Townships of Barefoot, Barterville, Carlisle, Ellisville, Headquarters, Henryville, Morningglory, Myers & Oakland Mills);
 OWEN (Townships of Beechwood, Bromley, Fairbanks, Holbrook, Jonesville, Long Ridge, Lusby's Mill, New, New Columbus, New Liberty, Owenton, Poplar Grove, Rockdale, Sanders, Teresita & Wheatley);
 SCOTT (Northern two-thirds, including Townships of Biddle, Davis, Delaplain, Elmville, Longlick, Muddy Ford, Oxford, Rogers Gap, Sadieville, Skinnersburg & Stonewall) COUNTIES

| | Rates | Fringes |
|------------------------------|----------|---------|
| IRONWORKER, REINFORCING..... | \$ 26.47 | 19.30 |
| ----- | | |
| IRON0769-007 12/01/2012 | | |

BATH, BOYD, CARTER, ELLIOTT, GREENUP, LEWIS, MONTGOMERY & ROWAN CLARK (Eastern third, including townships of Bloomingdale, Hunt, Indian Fields, Kiddville, Loglick, Rightangele & Thomson);
 FLEMING (Townships of Beechburg, Colfax, Elizaville, Flemingsburg, Flemingsburg Junction, Foxport, Grange City, Hillsboro, Hilltop, Mount Carmel, Muses Mills, Nepton, Pecksridge, Plummers Landing, Plummers Mill, Poplar Plains, Ringos Mills, Tilton & Wallingford);
 MASON (Eastern third, including Townships of Helena, Marshall, Orangeburg, Plumville & Springdale);
 NICHOLAS (Eastern eighth, including the Township of Moorefield Sprout)

| | Rates | Fringes |
|-------------------------|----------|---------|
| IRONWORKER..... | \$ 32.54 | 20.18 |
| ----- | | |
| LABO0189-003 07/01/2013 | | |

BATH, BOURBON, BOYD, BOYLE, BRACKEN, CARTER, CLARK, ELLIOTT, FAYETTE, FLEMING, FRANKLIN, GALLATIN, GRANT, GREENUP, HARRISON, JESSAMINE, LEWIS, MADISON, MASON, MERCER, MONTGOMERY, NICHOLAS, OWEN, ROBERTSON, ROWAN, SCOTT, & WOOLFORD COUNTIES

| | Rates | Fringes |
|--------------|----------|---------|
| Laborers: | | |
| GROUP 1..... | \$ 21.35 | 11.61 |
| GROUP 2..... | \$ 21.60 | 11.61 |
| GROUP 3..... | \$ 21.65 | 11.61 |
| GROUP 4..... | \$ 22.25 | 11.61 |

LABORERS CLASSIFICATIONS

GROUP 1 - Aging & Curing of Concrete; Asbestos Abatement

Worker; Asphalt Plant; Asphalt; Batch Truck Dump; Carpenter
 Tender; Cement Mason Tender; Cleaning of Machines;
 Concrete; Demolition; Dredging; Environmental - Nuclear,
 Radiation, Toxic & Hazardous Waste - Level D; Flagperson;
 Grade Checker; Hand Digging & Hand Back Filling; Highway
 Marker Placer; Landscaping, Mesh Handler & Placer; Puddler;
 Railroad; Rip-rap & Grouter; Right-of-Way; Sign, Guard Rail
 & Fence Installer; Signal Person; Sound Barrier Installer;
 Storm & Sanitary Sewer; Swamper; Truck Spotter & Dumper;
 Wrecking of Concrete Forms; General Cleanup

GROUP 2 - Batter Board Man (Sanitary & Storm Sewer);
 Brickmason Tender; Mortar Mixer Operator; Scaffold Builder;
 Burner & Welder; Bushhammer; Chain Saw Operator; Concrete
 Saw Operator; Deckhand Scow Man; Dry Cement Handler;
 Environmental - Nuclear, Radiation, Toxic & Hazardous Waste
 - Level C; Forklift Operator for Masonary; Form Setter;
 Green Concrete Cutting; Hand Operated Grouter & Grinder
 Machine Operator; Jackhammer; Pavement Breaker; Paving
 Joint Machine; Pipelayer; Plastic Pipe Fusion; Power Driven
 Georgia Buggy & Wheel Barrow; Power Post Hole Digger;
 Precast Manhole Setter; Walk-Behind Tamper; Walk-Behind
 Trencher; Sand Blaster; Concrete Chipper; Surface Grinder;
 Vibrator Operator; Wagon Driller

GROUP 3 - Asphalt Luteman & Raker; Gunnite Nozzleman;
 Gunnite Operator & Mixer; Grout Pump Operator; Side Rail
 Setter; Rail Paved Ditches; Screw Operator; Tunnel (Free
 Air); Water Blaster

GROUP 4 - Caisson Worker (Free Air); Cement Finisher;
 Environmental - Nuclear, Radiation, Toxic & Hazardous Waste
 - Levels A & B; Miner & Driller (Free Air); Tunnel Blaster;
 & Tunnel Mucker (Free Air); Directional & Horizontal
 Boring; Air Track Drillers (All Types); Powdermen &
 Blasters; Troxler & Concrete Tester if Laborer is Utilized

 LABO0189-008 07/01/2013

ANDERSON, BULLITT, CARROLL, HARDIN, HENRY, JEFFERSON, LARUE,
 MARION, MEADE, NELSON, OLDHAM, SHELBY, SPENCER, TRIMBLE &
 WASHINGTON COUNTIES

| | Rates | Fringes |
|--------------|----------|---------|
| Laborers: | | |
| GROUP 1..... | \$ 22.01 | 10.95 |
| GROUP 2..... | \$ 22.26 | 10.95 |
| GROUP 3..... | \$ 22.31 | 10.95 |
| GROUP 4..... | \$ 22.91 | 10.95 |

LABORERS CLASSIFICATIONS

GROUP 1 - Aging & Curing of Concrete; Asbestos Abatement
 Worker; Asphalt Plant; Asphalt; Batch Truck Dump; Carpenter

Tender; Cement Mason Tender; Cleaning of Machines;
 Concrete; Demolition; Dredging; Environmental - Nuclear,
 Radiation, Toxic & Hazardous Waste - Level D; Flagperson;
 Grade Checker; Hand Digging & Hand Back Filling; Highway
 Marker Placer; Landscaping, Mesh Handler & Placer; Puddler;
 Railroad; Rip-rap & Grouter; Right-of-Way; Sign, Guard Rail
 & Fence Installer; Signal Person; Sound Barrier Installer;
 Storm & Sanitary Sewer; Swamper; Truck Spotter & Dumper;
 Wrecking of Concrete Forms; General Cleanup

GROUP 2 - Batter Board Man (Sanitary & Storm Sewer);
 Brickmason Tender; Mortar Mixer Operator; Scaffold Builder;
 Burner & Welder; Bushhammer; Chain Saw Operator; Concrete
 Saw Operator; Deckhand Scow Man; Dry Cement Handler;
 Environmental - Nuclear, Radiation, Toxic & Hazardous Waste
 - Level C; Forklift Operator for Masonary; Form Setter;
 Green Concrete Cutting; Hand Operated Grouter & Grinder
 Machine Operator; Jackhammer; Pavement Breaker; Paving
 Joint Machine; Pipelayer; Plastic Pipe Fusion; Power Driven
 Georgia Buggy & Wheel Barrow; Power Post Hole Digger;
 Precast Manhole Setter; Walk-Behind Tamper; Walk-Behind
 Trencher; Sand Blaster; Concrete Chipper; Surface Grinder;
 Vibrator Operator; Wagon Driller

GROUP 3 - Asphalt Luteman & Raker; Gunnite Nozzleman;
 Gunnite Operator & Mixer; Grout Pump Operator; Side Rail
 Setter; Rail Paved Ditches; Screw Operator; Tunnel (Free
 Air); Water Blaster

GROUP 4 - Caisson Worker (Free Air); Cement Finisher;
 Environmental - Nuclear, Radiation, Toxic & Hazardous Waste
 - Levels A & B; Miner & Driller (Free Air); Tunnel Blaster;
 & Tunnel Mucker (Free Air); Directional & Horizontal
 Boring; Air Track Drillers (All Types); Powdermen &
 Blasters; Troxler & Concrete Tester if Laborer is Utilized

 LABO0189-009 07/01/2013

BRECKINRIDGE & GRAYSON COUNTIES

| | Rates | Fringes |
|--------------|----------|---------|
| Laborers: | | |
| GROUP 1..... | \$ 21.96 | 11.00 |
| GROUP 2..... | \$ 22.21 | 11.00 |
| GROUP 3..... | \$ 22.26 | 11.00 |
| GROUP 4..... | \$ 22.86 | 11.00 |

LABORERS CLASSIFICATIONS

GROUP 1 - Aging & Curing of Concrete; Asbestos Abatement
 Worker; Asphalt Plant; Asphalt; Batch Truck Dump; Carpenter
 Tender; Cement Mason Tender; Cleaning of Machines;
 Concrete; Demolition; Dredging; Environmental - Nuclear,
 Radiation, Toxic & Hazardous Waste - Level D; Flagperson;
 Grade Checker; Hand Digging & Hand Back Filling; Highway

Marker Placer; Landscaping, Mesh Handler & Placer; Puddler;
 Railroad; Rip-rap & Grouter; Right-of-Way; Sign, Guard Rail
 & Fence Installer; Signal Person; Sound Barrier Installer;
 Storm & Sanitary Sewer; Swamper; Truck Spotter & Dumper;
 Wrecking of Concrete Forms; General Cleanup

GROUP 2 - Batter Board Man (Sanitary & Storm Sewer);
 Brickmason Tender; Mortar Mixer Operator; Scaffold Builder;
 Burner & Welder; Bushhammer; Chain Saw Operator; Concrete
 Saw Operator; Deckhand Scow Man; Dry Cement Handler;
 Environmental - Nuclear, Radiation, Toxic & Hazardous Waste
 - Level C; Forklift Operator for Masonary; Form Setter;
 Green Concrete Cutting; Hand Operated Grouter & Grinder
 Machine Operator; Jackhammer; Pavement Breaker; Paving
 Joint Machine; Pipelayer; Plastic Pipe Fusion; Power Driven
 Georgia Buggy & Wheel Barrow; Power Post Hole Digger;
 Precast Manhole Setter; Walk-Behind Tamper; Walk-Behind
 Trencher; Sand Blaster; Concrete Chipper; Surface Grinder;
 Vibrator Operator; Wagon Driller

GROUP 3 - Asphalt Luteman & Raker; Gunnite Nozzleman;
 Gunnite Operator & Mixer; Grout Pump Operator; Side Rail
 Setter; Rail Paved Ditches; Screw Operator; Tunnel (Free
 Air); Water Blaster

GROUP 4 - Caisson Worker (Free Air); Cement Finisher;
 Environmental - Nuclear, Radiation, Toxic & Hazardous Waste
 - Levels A & B; Miner & Driller (Free Air); Tunnel Blaster;
 & Tunnel Mucker (Free Air); Directional & Horizontal
 Boring; Air Track Drillers (All Types); Powdermen &
 Blasters; Troxler & Concrete Tester if Laborer is Utilized

 PAIN0012-005 06/11/2005

BATH, BOURBON, BOYLE, CLARK, FAYETTE, FLEMING, FRANKLIN,
 HARRISON, JESSAMINE, MADISON, MERCER, MONTGOMERY, NICHOLAS,
 ROBERTSON, SCOTT & WOODFORD COUNTIES:

| | Rates | Fringes |
|--|-------|---------|
| PAINTER | | |
| Bridge/Equipment Tender and/or Containment Builder..\$ | 18.90 | 5.90 |
| Brush & Roller.....\$ | 21.30 | 5.90 |
| Elevated Tanks; Steeplejack Work; Bridge & Lead Abatement.....\$ | 22.30 | 5.90 |
| Sandblasting & Waterblasting.....\$ | 22.05 | 5.90 |
| Spray.....\$ | 21.80 | 5.90 |

 PAIN0012-017 05/01/2013

BRACKEN, GALLATIN, GRANT, MASON & OWEN COUNTIES:

| | Rates | Fringes |
|--|----------|---------|
| PAINTER (Heavy & Highway Bridges - Guardrails - Lightpoles - Striping) | | |
| Bridge Equipment Tender and Containment Builder..... | \$ 20.73 | 8.36 |
| Brush & Roller..... | \$ 23.39 | 8.36 |
| Elevated Tanks; Steeplejack Work; Bridge & Lead Abatement..... | | |
| Sandblasting & Water Blasting..... | \$ 24.39 | 8.36 |
| Spray..... | \$ 24.14 | 8.36 |
| | \$ 23.89 | 8.36 |

 PAIN0118-004 05/01/2010

ANDERSON, BRECKINRIDGE, BULLITT, CARROLL, GRAYSON, HARDIN,
 HENRY, JEFFERSON, LARUE, MARION, MEADE, NELSON, OLDHAM, SHELBY,
 SPENCER, TRIMBLE & WASHINGTON COUNTIES:

| | Rates | Fringes |
|---|----------|---------|
| PAINTER | | |
| Brush & Roller..... | \$ 18.50 | 10.30 |
| Spray, Sandblast, Power Tools, Waterblast & Steam Cleaning..... | | |
| | \$ 19.50 | 10.30 |

 PAIN1072-003 12/01/2012

BOYD, CARTER, ELLIOTT, GREENUP, LEWIS and ROWAN COUNTIES

| | Rates | Fringes |
|---|----------|---------|
| Painters: | | |
| Bridges; Locks; Dams; Tension Towers & Energized Substations..... | | |
| | \$ 30.18 | 14.65 |
| Power Generating Facilities. | \$ 26.94 | 14.65 |

 PLUM0248-003 06/01/2013

BOYD, CARTER, ELLIOTT, GREENUP, LEWIS & ROWAN COUNTIES:

| | Rates | Fringes |
|------------------------------|----------|---------|
| Plumber and Steamfitter..... | \$ 33.00 | 17.93 |

 PLUM0392-007 06/01/2013

BRACKEN, CARROLL (Eastern Half), GALLATIN, GRANT, MASON, OWEN &
 ROBERTSON COUNTIES:

| | Rates | Fringes |
|--|-------|---------|
|--|-------|---------|

Plumbers and Pipefitters.....\$ 29.60 17.09

PLUM0502-003 08/01/2013

BRECKINRIDGE, BULLITT, CARROLL (Western Half), FRANKLIN
(Western three-fourths), GRAYSON, HARDIN, HENRY, JEFFERSON,
LARUE, MARION, MEADE, NELSON, OLDHAM, SHELBY, SPENCER, TRIMBLE &
WASHINGTON COUNTIES

Rates Fringes
PLUMBER.....\$ 32.00 17.17

SUKY2010-160 10/08/2001

Rates Fringes
Truck drivers:
GROUP 1.....\$ 16.57 7.34
GROUP 2.....\$ 16.68 7.34
GROUP 3.....\$ 16.86 7.34
GROUP 4.....\$ 16.96 7.34

TRUCK DRIVER CLASSIFICATIONS

GROUP 1 - Mobile Batch Truck Tender

GROUP 2 - Greaser; Tire Changer; & Mechanic Tender

GROUP 3 - Single Axle Dump; Flatbed; Semi-trailer or Pole
Trailer when used to pull building materials and equipment;
Tandem Axle Dump; Distributor; Mixer; & Truck Mechanic

GROUP 4 - Euclid & Other Heavy Earthmoving Equipment &
Lowboy; Articulator Cat; 5-Axle Vehicle; Winch & A-Frame
when used in transporting materials; Ross Carrier; Forklift
when used to transport building materials; & Pavement
Breaker

WELDERS - Receive rate prescribed for craft performing
operation to which welding is incidental.

=====

Unlisted classifications needed for work not included within
the scope of the classifications listed may be added after
award only as provided in the labor standards contract clauses
(29CFR 5.5 (a) (1) (ii)).

The body of each wage determination lists the classification and wage rates that have been found to be prevailing for the cited type(s) of construction in the area covered by the wage determination. The classifications are listed in alphabetical order of "identifiers" that indicate whether the particular rate is union or non-union.

Union Identifiers

An identifier enclosed in dotted lines beginning with characters other than "SU" denotes that the union classification and rate have found to be prevailing for that classification. Example: PLUM0198-005 07/01/2011. The first four letters , PLUM, indicate the international union and the four-digit number, 0198, that follows indicates the local union number or district council number where applicable , i.e., Plumbers Local 0198. The next number, 005 in the example, is an internal number used in processing the wage determination. The date, 07/01/2011, following these characters is the effective date of the most current negotiated rate/collective bargaining agreement which would be July 1, 2011 in the above example.

Union prevailing wage rates will be updated to reflect any changes in the collective bargaining agreements governing the rates.

0000/9999: weighted union wage rates will be published annually each January.

Non-Union Identifiers

Classifications listed under an "SU" identifier were derived from survey data by computing average rates and are not union rates; however, the data used in computing these rates may include both union and non-union data. Example: SULA2004-007 5/13/2010. SU indicates the rates are not union majority rates, LA indicates the State of Louisiana; 2004 is the year of the survey; and 007 is an internal number used in producing the wage determination. A 1993 or later date, 5/13/2010, indicates the classifications and rates under that identifier were issued as a General Wage Determination on that date.

Survey wage rates will remain in effect and will not change until a new survey is conducted.

WAGE DETERMINATION APPEALS PROCESS

1.) Has there been an initial decision in the matter? This can be:

- * an existing published wage determination
- * a survey underlying a wage determination
- * a Wage and Hour Division letter setting forth a position on a wage determination matter
- * a conformance (additional classification and rate) ruling

On survey related matters, initial contact, including requests for summaries of surveys, should be with the Wage and Hour Regional Office for the area in which the survey was conducted because those Regional Offices have responsibility for the Davis-Bacon survey program. If the response from this initial contact is not satisfactory, then the process described in 2.) and 3.) should be followed.

With regard to any other matter not yet ripe for the formal process described here, initial contact should be with the Branch of Construction Wage Determinations. Write to:

Branch of Construction Wage Determinations
Wage and Hour Division
U.S. Department of Labor
200 Constitution Avenue, N.W.
Washington, DC 20210

2.) If the answer to the question in 1.) is yes, then an interested party (those affected by the action) can request review and reconsideration from the Wage and Hour Administrator (See 29 CFR Part 1.8 and 29 CFR Part 7). Write to:

Wage and Hour Administrator
U.S. Department of Labor
200 Constitution Avenue, N.W.
Washington, DC 20210

The request should be accompanied by a full statement of the interested party's position and by any information (wage payment data, project description, area practice material, etc.) that the requestor considers relevant to the issue.

3.) If the decision of the Administrator is not favorable, an interested party may appeal directly to the Administrative Review Board (formerly the Wage Appeals Board). Write to:

Administrative Review Board
U.S. Department of Labor
200 Constitution Avenue, N.W.
Washington, DC 20210

4.) All decisions by the Administrative Review Board are final.

=====

END OF GENERAL DECISION

Fringe benefit amounts are applicable for all hours worked except when otherwise noted.

These rates are listed pursuant to the Kentucky Determination No. CR-13-III- HWY dated April 15, 2013.

No laborer, workman or mechanic shall be paid at a rate less than that of a Journeyman except those classified as bona fide apprentices.

Apprentices or trainees shall be permitted to work as such subject to Administrative Regulations adopted by the Commissioner of Workplace Standards. Copies of these regulations will be furnished upon request from any interested person.

Before using apprentices on the job the contractor shall present to the Contracting Officer written evidence of registration of such employees in a program of a State apprenticeship and training agency approved and recognized by the U. S. Bureau of Apprenticeship and Training. In the absence of such a State agency, the contractor shall submit evidence of approval and registration by the U. S. Bureau of Apprenticeship and Training.

The contractor shall submit to the Contracting Officer, written evidence of the established apprenticeship-journeyman ratios and wage rates in the project area, which will be the basis for establishing such ratios and rates for the project under the applicable contract provisions.

TO: EMPLOYERS/EMPLOYEES

PREVAILING WAGE SCHEDULE:

The wages indicated on this wage schedule are the least permitted to be paid for the occupations indicated. When an employee works in more than one classification, the employer must record the number of hours worked in each classification at the prescribed hourly base rate.

OVERTIME:

Overtime is to be paid after an employee works eight (8) hours a day or forty (40) hours a week, whichever gives the employee the greater wages. At least time and one-half the base rate is required for all overtime. A laborer, workman or mechanic and an employer may enter into a written agreement or a collective bargaining agreement to work more than eight (8) hours a calendar day but not more than ten (10) hours a calendar day for the straight time hourly rate. Wage violations or questions should be directed to the designated Engineer or the undersigned.

Ryan Griffith, Acting Director
Division of Construction Procurement
Frankfort, Kentucky 40622

PART IV
INSURANCE

INSURANCE

The Contractor shall procure and maintain the following insurance in addition to the insurance required by law:

- 1) Commercial General Liability-Occurrence form – not less than \$2,000,000 General aggregate, \$2,000,000 Products & Completed Aggregate, \$1,000,000 Personal & Advertising, \$1,000,000 each occurrence.
- 2) Automobile Liability- \$1,000,000 per accident
- 3) Employers Liability:
 - a) \$100,000 Each Accident Bodily Injury
 - b) \$500,000 Policy limit Bodily Injury by Disease
 - c) \$100,000 Each Employee Bodily Injury by Disease
- 4) The insurance required above must be evidenced by a Certificate of Insurance and this Certificate of Insurance must contain one of the following statements:
 - a) "policy contains no deductible clauses."
 - b) "policy contains _____ (amount) deductible property damage clause but company will pay claim and collect the deductible from the insured."
- 5) KENTUCKY WORKMEN'S COMPENSATION INSURANCE. The contractor shall furnish evidence of coverage of all his employees or give evidence of self-insurance by submitting a copy of a certificate issued by the Workmen's Compensation Board.

The cost of insurance is incidental to all contract items. All subcontractors must meet the same minimum insurance requirements.

PART V
BID ITEMS

PROPOSAL BID ITEMS

131222

Page 1 of 2

Report Date 1/22/13

Section: 0001 - PAVING

| LINE | BID CODE | ALT | DESCRIPTION | QUANTITY | UNIT | UNIT PRICE | FP | AMOUNT |
|------|----------|-----|-----------------------------|----------|------|------------|----|--------|
| 0010 | 00003 | | CRUSHED STONE BASE | 3,681.00 | TON | | \$ | |
| 0020 | 00020 | | TRAFFIC BOUND BASE | 300.00 | TON | | \$ | |
| 0030 | 00212 | | CL2 ASPH BASE 1.00D PG64-22 | 4,005.00 | TON | | \$ | |
| 0040 | 00307 | | CL2 ASPH SURF 0.38B PG64-22 | 681.00 | TON | | \$ | |
| 0050 | 02101 | | CEM CONC ENT PAVEMENT-8 IN | 119.00 | SQYD | | \$ | |

Section: 0002 - ROADWAY

| LINE | BID CODE | ALT | DESCRIPTION | QUANTITY | UNIT | UNIT PRICE | FP | AMOUNT |
|------|----------|-----|---|-----------|------|------------|----|--------|
| 0060 | 00078 | | CRUSHED AGGREGATE SIZE NO 2 INCLUDES 1 TON AROUND EACH PERF PIPE HEADWALL AND 875 TONS FOR WORKING PLATFORM | 877.00 | TON | | \$ | |
| 0070 | 01000 | | PERFORATED PIPE-4 IN | 56.00 | LF | | \$ | |
| 0080 | 01010 | | NON-PERFORATED PIPE-4 IN | 20.00 | LF | | \$ | |
| 0090 | 01028 | | PERF PIPE HEADWALL TY 3-4 IN | 2.00 | EACH | | \$ | |
| 0100 | 02091 | | REMOVE PAVEMENT | 892.00 | SQYD | | \$ | |
| 0110 | 02159 | | TEMP DITCH | 2,075.00 | LF | | \$ | |
| 0120 | 02200 | | ROADWAY EXCAVATION | 21,453.00 | CUYD | | \$ | |
| 0130 | 02203 | | STRUCTURE EXCAV-UNCLASSIFIED | 300.00 | CUYD | | \$ | |
| 0140 | 02242 | | WATER | 20.00 | MGAL | | \$ | |
| 0150 | 02429 | | RIGHT-OF-WAY MONUMENT TYPE 1 | 20.00 | EACH | | \$ | |
| 0160 | 02432 | | WITNESS POST | 20.00 | EACH | | \$ | |
| 0170 | 02545 | | CLEARING AND GRUBBING (APPROXIMATELY 5.76 ACRES) | 1.00 | LS | | \$ | |
| 0180 | 02562 | | TEMPORARY SIGNS | 63.00 | SQFT | | \$ | |
| 0190 | 02599 | | FABRIC-GEOTEXTILE TYPE IV | 2,600.00 | SQYD | | \$ | |
| 0200 | 02600 | | FABRIC GEOTEXTILE TY IV FOR PIPE | 168.00 | SQYD | | \$ | |
| 0210 | 02650 | | MAINTAIN & CONTROL TRAFFIC MAINTAIN AND CONTROL TRAFFIC BASED ON 1.5% OF THE PROJECT TOTAL. | 1.00 | LS | | \$ | |
| 0220 | 02651 | | DIVERSIONS (BY-PASS DETOURS) ESTIMATE FOR DIVERSION #1 | 1.00 | LS | | \$ | |
| 0230 | 02651 | | DIVERSIONS (BY-PASS DETOURS) ESTIMATE FOR DIVERSION #2 | 1.00 | LS | | \$ | |
| 0240 | 02651 | | DIVERSIONS (BY-PASS DETOURS) ESTIMATE FOR DIVERSION #3 | 1.00 | LS | | \$ | |
| 0250 | 02701 | | TEMP SILT FENCE | 2,075.00 | LF | | \$ | |
| 0260 | 02703 | | SILT TRAP TYPE A | 6.00 | EACH | | \$ | |
| 0270 | 02704 | | SILT TRAP TYPE B | 6.00 | EACH | | \$ | |
| 0280 | 02705 | | SILT TRAP TYPE C | 6.00 | EACH | | \$ | |
| 0290 | 02706 | | CLEAN SILT TRAP TYPE A | 12.00 | EACH | | \$ | |
| 0300 | 02707 | | CLEAN SILT TRAP TYPE B | 12.00 | EACH | | \$ | |
| 0310 | 02708 | | CLEAN SILT TRAP TYPE C | 12.00 | EACH | | \$ | |
| 0320 | 02709 | | CLEAN TEMP SILT FENCE | 4,150.00 | LF | | \$ | |
| 0330 | 02714 | | SHOULDERING | 3,950.00 | LF | | \$ | |
| 0340 | 02726 | | STAKING | 1.00 | LS | | \$ | |
| 0350 | 05950 | | EROSION CONTROL BLANKET | 1,710.00 | SQYD | | \$ | |
| 0360 | 05952 | | TEMP MULCH | 27,878.00 | SQYD | | \$ | |

PROPOSAL BID ITEMS

131222

Page 2 of 2

Report Date 1/22/13

| LINE | BID CODE | ALT | DESCRIPTION | QUANTITY | UNIT | UNIT PRICE | FP | AMOUNT |
|------|------------|-----|---|-----------|------|------------|----|--------|
| 0370 | 05953 | | TEMP SEEDING AND PROTECTION | 6,360.00 | SQYD | | \$ | |
| 0380 | 05966 | | TOPDRESSING FERTILIZER | 1.10 | TON | | \$ | |
| 0390 | 05985 | | SEEDING AND PROTECTION | 21,200.00 | SQYD | | \$ | |
| 0400 | 06510 | | PAVE STRIPING-TEMP PAINT-4 IN | 5,957.00 | LF | | \$ | |
| 0410 | 06514 | | PAVE STRIPING-PERM PAINT-4 INYELLOW PAINT | 3,950.00 | LF | | \$ | |
| 0420 | 06514 | | PAVE STRIPING-PERM PAINT-4 INWHITE PAINT | 3,950.00 | LF | | \$ | |
| 0430 | 10020NS | | FUEL ADJUSTMENT | 11,004.00 | DOLL | | \$ | |
| 0440 | 10030NS | | ASPHALT ADJUSTMENT | 18,320.00 | DOLL | | \$ | |
| 0450 | 20063EN9T | | DRY-LAID ROCK FENCEUNIT PRICE DERIVED FROM PREVIOUS UNIT BID TABULATIONS. | 2,498.00 | LF | | \$ | |
| 0460 | 23274EN11F | | TURF REINFORCEMENT MAT 1 | 1,584.00 | SQYD | | \$ | |
| 0470 | 24491ED | | DRY-LAID ROCK FENCE (DISMANTLE & STOCKPILE) | 2,390.00 | LF | | \$ | |

Section: 0003 - DRAINAGE

| LINE | BID CODE | ALT | DESCRIPTION | QUANTITY | UNIT | UNIT PRICE | FP | AMOUNT |
|------|------------|-----|------------------------------|----------|------|------------|----|--------|
| 0480 | 00440 | | ENTRANCE PIPE-15 IN | 204.00 | LF | | \$ | |
| 0490 | 00462 | | CULVERT PIPE-18 IN | 54.00 | LF | | \$ | |
| 0500 | 01450 | | S & F BOX INLET-OUTLET-18 IN | 2.00 | EACH | | \$ | |
| 0510 | 23131ER701 | | PIPELINE VIDEO INSPECTION | 258.00 | LF | | \$ | |

Section: 0004 - DEMOBILIZATION

| LINE | BID CODE | ALT | DESCRIPTION | QUANTITY | UNIT | UNIT PRICE | FP | AMOUNT |
|------|----------|-----|----------------|----------|------|------------|----|--------|
| 0520 | 02569 | | DEMOBILIZATION | 1.00 | LS | | \$ | |