



CALL NO. 303

CONTRACT ID. 192607

JEFFERSON COUNTY

FED/STATE PROJECT NUMBER FJ11 056 0065 B00214L

DESCRIPTION I-65 SB OVER OHIO RIVER - FINGER JOINT REPAIR

WORK TYPE BRIDGE REPAIRS

PRIMARY COMPLETION DATE 11/25/2019

LETTING DATE: August 23,2019

Sealed Bids will be received electronically through the Bid Express bidding service until 10:00 AM EASTERN DAYLIGHT TIME August 23,2019. Bids will be publicly announced at 10:00 AM EASTERN DAYLIGHT TIME.

NO PLANS ASSOCIATED WITH THIS PROJECT.

REQUIRED BID PROPOSAL GUARANTY: Not less than 5% of the total bid.

TABLE OF CONTENTS

PART I	SCOPE OF WORK
	<ul style="list-style-type: none">• PROJECT(S), COMPLETION DATE(S), & LIQUIDATED DAMAGES• CONTRACT NOTES• STATE CONTRACT NOTES• EXPEDITE WORK ORDER• SPECIAL NOTE(S) APPLICABLE TO PROJECT• LIQUIDATED DAMAGES• TRAFFIC CONTROL PLAN• SKETCH MAP(S)• BRIDGE DRAWINGS
PART II	SPECIFICATIONS AND STANDARD DRAWINGS
	<ul style="list-style-type: none">• SPECIFICATIONS REFERENCE• SUPPLEMENTAL SPECIFICATION
PART III	EMPLOYMENT, WAGE AND RECORD REQUIREMENTS
	<ul style="list-style-type: none">• LABOR AND WAGE REQUIREMENTS• EXECUTIVE BRANCH CODE OF ETHICS• KENTUCKY EQUAL EMPLOYMENT OPPORTUNITY ACT OF 1978 LOCALITY / STATE• PROJECT WAGE RATES / STATE
PART IV	INSURANCE
PART V	BID ITEMS

PART I
SCOPE OF WORK

ADMINISTRATIVE DISTRICT - 05

CONTRACT ID - 192607

FJ11 056 0065 B00214L

COUNTY - JEFFERSON

PCN - MB05600651906

FJ11 056 0065 B00214L

JOHN F. KENNEDY MEMORIAL BRIDGE - I 65 SB (MP 136.886). BRIDGE OVER OHIO RIVER BRIDGE REPAIRS
GEOGRAPHIC COORDINATES LATITUDE 38:15:53.00 LONGITUDE 85:44:37.00

COMPLETION DATE(S):

COMPLETED BY 11/25/2019

7 CALENDAR Days

14 CALENDAR Days

APPLIES TO ENTIRE CONTRACT

APPLIES TO PHASE 2

APPLIES TO PHASE 1

CONTRACT NOTES

PROPOSAL ADDENDA

All addenda to this proposal must be applied when calculating bid and certified in the bid packet submitted to the Kentucky Department of Highways. Failure to use the correct and most recent addenda may result in the bid being rejected.

BID SUBMITTAL

Bidder must use the Department's electronic bidding software. The Bidder must download the bid file located on the Bid Express website (www.bidx.com) to prepare a bid packet for submission to the Department. The bidder must submit electronically using Bid Express.

JOINT VENTURE BIDDING

Joint venture bidding is permissible. All companies in the joint venture must be prequalified in one of the work types in the Qualifications for Bidders for the project. The bidders must get a vendor ID for the joint venture from the Division of Construction Procurement and register the joint venture as a bidder on the project. Also, the joint venture must obtain a digital ID from Bid Express to submit a bid. A joint bid bond of 5% may be submitted for both companies or each company may submit a separate bond of 5%.

UNDERGROUND FACILITY DAMAGE PROTECTION

The contractor shall make every effort to protect underground facilities from damage as prescribed in the Underground Facility Damage Protection Act of 1994, Kentucky Revised Statute KRS 367.4901 to 367.4917. It is the contractor's responsibility to determine and take steps necessary to be in compliance with federal and state damage prevention directives. When prescribed in said directives, the contractor shall submit Excavation Locate Requests to the Kentucky Contact Center (KY811) via web ticket entry. The submission of this request does not relieve the contractor from the responsibility of contacting non-member facility owners, whom shall be contacted through their individual Protection Notification Center. Non-compliance with these directives can result in the enforcement of penalties.

REGISTRATION WITH THE SECRETARY OF STATE BY A FOREIGN ENTITY

Pursuant to KRS 176.085(1)(b), an agency, department, office, or political subdivision of the Commonwealth of Kentucky shall not award a state contract to a person that is a foreign entity required by [KRS 14A.9-010](#) to obtain a certificate of authority to transact business in the Commonwealth ("certificate") from the Secretary of State under [KRS 14A.9-030](#) unless the person produces the certificate within fourteen (14) days of the bid or proposal opening. If the foreign entity is not required to obtain a certificate as provided in [KRS 14A.9-010](#), the foreign entity should identify the applicable exception. Foreign entity is defined within [KRS 14A.1-070](#).

For all foreign entities required to obtain a certificate of authority to transact business in the Commonwealth, if a copy of the certificate is not received by the contracting agency within the time frame identified above, the foreign entity's solicitation response shall be deemed non-responsive or the awarded contract shall be cancelled.

Businesses can register with the Secretary of State at <https://secure.kentucky.gov/sos/ftbr/welcome.aspx>.

SPECIAL NOTE FOR PROJECT QUESTIONS DURING ADVERTISEMENT

Questions about projects during the advertisement should be submitted in writing to the Division of Construction Procurement. This may be done by fax (502) 564-7299 or email to kytc.projectquestions@ky.gov. The Department will attempt to answer all submitted questions. The Department reserves the right not to answer if the question is not pertinent or does not aid in clarifying the project intent.

The deadline for posting answers will be 3:00 pm Eastern Daylight Time, the day preceding the Letting. Questions may be submitted until this deadline with the understanding that the later a question is submitted, the less likely an answer will be able to be provided.

The questions and answers will be posted for each Letting under the heading "Questions & Answers" on the Construction Procurement website (www.transportation.ky.gov/contract). The answers provided shall be considered part of this Special Note and, in case of a discrepancy, will govern over all other bidding documents.

HARDWOOD REMOVAL RESTRICTIONS

The US Department of Agriculture has imposed a quarantine in Kentucky and several surrounding states, to prevent the spread of an invasive insect, the emerald ash borer. Hardwood cut in conjunction with the project may not be removed from the state. Chipping or burning on site is the preferred method of disposal.

INSTRUCTIONS FOR EXCESS MATERIAL SITES AND BORROW SITES

Identification of excess material sites and borrow sites shall be the responsibility of the Contractor. The Contractor shall be responsible for compliance with all applicable state and federal laws and may wish to consult with the US Fish and Wildlife Service to seek protection under Section 10 of the Endangered Species Act for these activities.

ACCESS TO RECORDS

The contractor, as defined in KRS 45A.030 (9) agrees that the contracting agency, the Finance and Administration Cabinet, the Auditor of Public Accounts, and the Legislative Research Commission, or their duly authorized representatives, shall have access to any books, documents, papers, records, or other evidence, which are directly pertinent to this contract for the purpose of financial audit or program review. Records and other prequalification information confidentially

disclosed as part of the bid process shall not be deemed as directly pertinent to the contract and shall be exempt from disclosure as provided in KRS 61.878(1)(c). The contractor also recognizes that any books, documents, papers, records, or other evidence, received during a financial audit or program review shall be subject to the Kentucky Open Records Act, KRS 61.870 to 61.884.

In the event of a dispute between the contractor and the contracting agency, Attorney General, or the Auditor of Public Accounts over documents that are eligible for production and review, the Finance and Administration Cabinet shall review the dispute and issue a determination, in accordance with Secretary's Order 11-004.

April 30, 2018

SPECIAL NOTE FOR RECIPROCAL PREFERENCE

RECIPROCAL PREFERENCE TO BE GIVEN BY PUBLIC AGENCIES TO RESIDENT BIDDERS

By reference, KRS 45A.490 to 45A.494 are incorporated herein and in compliance regarding the bidders residency. Bidders who want to claim resident bidder status should complete the Affidavit for Claiming Resident Bidder Status along with their bid in the electronic bidding software. Submittal of the Affidavit should be done along the bid in Bid Express.

April 30, 2018

EXPEDITE PROJECT WORK ORDER

The Contractor may request that the Department expedite the work order for this project to allow for maximization of time to complete the work. In order for the Department to accomplish this task, the Contractor may be required to “hand carry” all required project documentation to facilitate the process. Immediately UPON NOTIFICATION OF AWARD OF THE CONTRACT, deliver required project documentation to:

Division of Construction Procurement
200 Mero St.
Frankfort, KY 40602

TEMPORARY WORKSITE SPEED LIMIT SIGN ASSEMBLY

This shall consist of furnishing and placing portable speed limit signs as shown on the plans or as directed in areas of work activity. The worksite speed limit flashing strobe lights shall be activated when the worksite speed limit is in effect. This shall be only where and while work is actually in progress and workers are present. Each strobe light shall be visible through a range of 120 degrees Fahrenheit when viewed facing the sign and shall have a minimum effective luminance of 2100 cd effective according to the manufacturer's literature, which shall be provided to the Engineer prior to use.

Wherever a permanent speed limit sign exists within the limits controlled by the worksite speed limit sign assemblies, additional worksite speed limit sign assemblies shall be placed next to the permanent signs or the permanent signs shall be covered.

The worksite speed limit shall not be used for the entire length of a roadway under construction unless there is actual work activity for the entire length of such roadway. It shall not be activated at the beginning of the day, for the entire day, if actual work is not being done all day in the work area.

The worksite speed zone signage shall be placed and maintained by the Contractor. The worksite speed limit will be 45 mph, or 10 mph below the posted speed limit for the roadway under construction, whichever is lower.

A worksite reduced speed advance warning sign assembly shall be placed in advance of the first worksite speed limit sign assembly when the reduction in speed limit is greater than 15 mph.

The Department will **NOT** measure for payment, but are incidental to "Maintain and Control Traffic", lump sum.

SPECIAL NOTE FOR PORTABLE CHANGEABLE MESSAGE SIGNS

This Special Note will apply when indicated on the plans or in the proposal.

1.0 DESCRIPTION. Furnish, install, operate, and maintain variable message signs at the locations shown on the plans or designated by the Engineer. Remove and retain possession of variable message signs when they are no longer needed on the project.

2.0 MATERIALS.

2.1 General. Use LED Variable Message Signs Class I, II, or III, as appropriate, from the Department's List of Approved Materials.

Unclassified signs may be submitted for approval by the Engineer. The Engineer may require a daytime and nighttime demonstration. The Engineer will make a final decision within 30 days after all required information is received.

2.2 Sign and Controls. All signs must:

- 1) Provide 3-line messages with each line being 8 characters long and at least 18 inches tall. Each character comprises 35 pixels.
- 2) Provide at least 40 preprogrammed messages available for use at any time. Provide for quick and easy change of the displayed message; editing of the message; and additions of new messages.
- 3) Provide a controller consisting of:
 - a) Keyboard or keypad.
 - b) Readout that mimics the actual sign display. (When LCD or LCD type readout is used, include backlighting and heating or otherwise arrange for viewing in cold temperatures.)
 - c) Non-volatile memory or suitable memory with battery backup for storing pre-programmed messages.
 - d) Logic circuitry to control the sequence of messages and flash rate.
- 4) Provide a serial interface that is capable of supporting complete remote-control ability through land line and cellular telephone operation. Include communication software capable of immediately updating the message, providing complete sign status, and allowing message library queries and updates.
- 5) Allow a single person easily to raise the sign to a satisfactory height above the pavement during use and lower the sign during travel.
- 6) Be Highway Orange on all exterior surfaces of the trailer, supports, and controller cabinet.
- 7) Provide operation in ambient temperatures from -30 to +120 degrees Fahrenheit during snow, rain and other inclement weather.

- 8) Provide the driver board as part of a module. All modules are interchangeable and have plug and socket arrangements for disconnection and reconnection. Printed circuit boards associated with driver boards have a conformable coating to protect against moisture.
- 9) Provide a sign case sealed against rain, snow, dust, insects, etc. The lens is UV stabilized clear plastic (polycarbonate, acrylic, or other approved material) angled to prevent glare.
- 10) Provide a flat black UV protected coating on the sign hardware, character PCB, and appropriate lens areas.
- 11) Provide a photocell control to provide automatic dimming.
- 12) Allow an on-off flashing sequence at an adjustable rate.
- 13) Provide a sight to aim the message.
- 14) Provide a LED display color of approximately 590 nm amber.
- 15) Provide a controller that is password protected.
- 16) Provide a security device that prevents unauthorized individuals from accessing the controller.
- 17) Provide the following 3-line messages preprogrammed and available for use when the sign unit begins operation:

/KEEP/RIGHT/⇒⇒⇒/	/MIN/SPEED/**MPH/
/KEEP/LEFT/⇐⇐⇐/	/ICY/BRIDGE/AHEAD/ /ONE
/LOOSE/GRAVEL/AHEAD/	LANE/BRIDGE/AHEAD/
/RD WORK/NEXT/**MILES/	/ROUGH/ROAD/AHEAD/
/TWO WAY/TRAFFIC/AHEAD/	/MERGING/TRAFFIC/AHEAD/
/PAINT/CREW/AHEAD/	/NEXT/***/MILES/
/REDUCE/SPEED/**MPH/	/HEAVY/TRAFFIC/AHEAD/
/BRIDGE/WORK/***0 FT/	/SPEED/LIMIT/**MPH/
/MAX/SPEED/**MPH/	/BUMP/AHEAD/
/SURVEY/PARTY/AHEAD/	/TWO/WAY/TRAFFIC/

*Insert numerals as directed by the Engineer.
Add other messages during the project when required by the Engineer.

2.3 Power.

- 1) Design solar panels to yield 10 percent or greater additional charge than sign consumption. Provide direct wiring for operation of the sign or arrow board from an external power source to provide energy backup for 21 days without sunlight and an on-board system charger with the ability to recharge completely discharged batteries in 24 hours.

3.0 CONSTRUCTION. Furnish and operate the variable message signs as designated on the plans or by the Engineer. Ensure the bottom of the message panel is a minimum of 7 feet above the roadway in urban areas and 5 feet above in rural areas when operating. Use Class I, II, or III

11

signs on roads with a speed limit less than 55 mph. Use Class I or II signs on roads with speed limits 55 mph or greater.

Maintain the sign in proper working order, including repair of any damage done by others, until completion of the project. When the sign becomes inoperative, immediately repair or replace the sign. Repetitive problems with the same unit will be cause for rejection and replacement.

Use only project related messages and messages directed by the Engineer, unnecessary messages lessen the impact of the sign. Ensure the message is displayed in either one or 2 phases with each phase having no more than 3 lines of text. When no message is needed, but it is necessary to know if the sign is operable, flash only a pixel.

When the sign is not needed, move it outside the clear zone or where the Engineer directs. Variable Message Signs are the property of the Contractor and shall be removed from the project when no longer needed. The Department will not assume ownership of these signs.

SPECIAL NOTE FOR CONTRACT COMPLETION DATE AND LIQUIDATED DAMAGES ON BRIDGE REPAIR CONTRACT

I. COMPLETION DATE. The Contractor has the option of selecting the starting date for this Contract. Once selected, notify the Department in writing of the date selected at least two weeks prior to beginning work. All work is to be completed by November 25, 2019 at 5:00 AM. An allotted number of Calendar days are assigned to each phase in this contract as shown below.

PHASE	ALOTTED DAYS
PHASE 1	14
PHASE 2	7

Contrary to Kentucky Transportation Cabinet Department of Highways Standard Specifications for Road and Bridge Construction, Edition of 2019 (Standard Specifications), Section 108.07.02, the Engineer will begin charging calendar days for a Phase on the day the Contractor starts work or sets up traffic control for that particular phase.

II. LIQUIDATED DAMAGES. Liquidated damages will be assessed the Contractor in accordance with the Standard Specifications, Section 108.09, when either the allotted number of calendar days or the November 25, 2019 date is exceeded.

Contrary to the Standard Specifications, liquidated damages will be assessed to the Contractor during the months of December, January, February and March when the contract time has expired. Contract time will be charged during these months.

All construction must be completed in accordance with the weather limitations specified in Section 606 and/or Section 601 as applicable. No extension of Contract time will be granted due to inclement weather or temperature limitations that occur due to starting work on the Contract or a structure late in the construction season.

In addition to Contract Liquidated Damages defined in Section 108.09 of the Standard Specifications the following liquidated damages will apply:

Liquidated Damages of \$5,000 per day for each day exceeding the allotted closure days in Phase 1 and Phase 2 collectively.

Liquidated Damages of \$10,000 per day for each day exceeding the allotted completion date.

SPECIAL NOTE FOR TRAFFIC CONTROL ON BRIDGE REPAIR CONTRACTS

I. TRAFFIC CONTROL GENERAL

Except as provided herein, traffic shall be maintained in accordance with Kentucky Transportation Cabinet Department of Highways Standard Specifications for Road and Bridge Construction, Edition of 2019 (Standard Specifications), Section 112.

ALL traffic control devices, installation, maintenance, removal and items of work necessary to maintain and control traffic are considered incidental to “Maintain and Control Traffic”, lump sum. See Table 1 for summary of incidentals and quantities. The Department **WILL NOT** take possession of the traffic control devices upon completion of the work.

Contractor shall develop their own maintenance of traffic (MOT) plan that conforms to this note, the MOT scheme shown in the plan set and in accordance with the 2011 Manual for Uniform Traffic Control Devices (MUTCD), Current Edition. The MOT shall be approved by the District prior to implementation. All lane closures must be approved by the Engineer at least 14 days prior to the closure.

Contrary to Standard Specifications, Section 106.01, traffic control devices used on this project may be new or used in new condition, at the beginning of the work and maintained in like new condition until completion of the work.

TABLE 1: INCIDENTALS TO MAINTAIN AND CONTROL TRAFFIC		
ITEM	QUANTITY	UNIT
BARRELS	1	LS
TEMPORARY SIGNS	971	SF
ARROW PANEL	3	EACH
PORTABLE CHANGEABLE MESSAGE SIGN	6	EACH
PAVE STRIPING-TEMP REM TAPE-W	9575	LF
PAVE STRIPING-TEMP REM TAPE-Y	7685	LF
PAVE STRIPING-TEMP REM TAPE-B	5430	LF
LANE CLOSURE	2	EACH
TRUCK MOUNTED ATTENUATOR	4	EACH
DURABLE WATERBORNE MARKING – 12 IN. WHITE	2715	LF
TRUCK MOBILIZATION	1	LS

The posted speed limit in Indiana is 55 MPH and it will be reduced by 10 MPH in the immediate vicinity of the work zone area (see the attached “TEMPORARY WORKSITE SPEED LIMIT SIGN ASSEMBLY” for Special requirements of State of Indiana). The extent of these areas within the project limits will be restricted to the proximity of actual work areas as determined by the Engineer. Reduced speed limits and double fine zones will be in place only while lane closures or restricted lane and/or shoulder widths are in place. Notify the Engineer a minimum of 12 hours prior to using the double fine signs. Erect dual mounted "WARNING FINE DOUBLED IN WORK

ZONE" signs at the beginning of the work zone. At the end of the work zone, erect dual mounted "END DOUBLE FINE" signs. Remove or cover the double fine signs when the highway work zone does not have workers present for more than a 12-hour period of time. Erect all required signs at the locations shown on the MOT Plan or as directed by the Engineer. Traffic Control will need to be coordinated with Indiana Department of Transportation.

II. MOT RESTRICTIONS

No lane closures shall be allowed during observance of any National Holidays identified in Section 101 of the Standard Specifications, or during the Kentucky State Fair.

III. TRAFFIC COORDINATOR

Furnish a Traffic Coordinator as per Standard Specifications Section 112. The Traffic Coordinator shall inspect the project maintenance of traffic, at least three times daily, or as directed by the Engineer, during the Contractor's operations and at any time a lane closure is in place. The personnel shall have access on the project to a radio or telephone to be used in case of emergencies or accidents.

The Traffic Coordinator shall report all incidents throughout the work zone to the Engineer on the project. The Contractor shall furnish the name and telephone number where the Traffic Coordinator can be contacted at all times.

IV. SIGNS

Contractor shall sign all closures in accordance with the MOT drawings and the Indiana approved MUTCD.

The Contractor is to install warning signs for wide loads in advance of the bridge under the direction of the Engineer.

Additional traffic control signs in addition to normal lane closure signing detailed on the MUTCD Drawings may be required by the Engineer. Additional signs needed for lane closures may include, but are not limited to, dual mounted TRUCKS USE CENTER LANE, LEFT/CENTER LANE I65SB, CENTER LANE I64EB/I71, RIGHT LANE I64WB, LEFT/RIGHT LANE CLOSED 2 MILES, SLOWED/STOPPED TRAFFIC AHEAD. All installations shall be approved by the Engineer.

Remove or cover sign panels with conflicting direction guidance information on overhead sign trusses before and on the Kennedy Bridge, as directed by the Engineer.

V. FLASHING ARROWS

All installations shall be approved by the Engineer.

VI. PAVEMENT MARKINGS

Permanent and Temporary Striping shall be in accordance with Standard Specifications Section 112, except that:

1. Temporary Striping shall be 6" removal tape-white or yellow; and
2. Edge lines will be required for temporary striping; and
3. Temporary or permanent striping shall be in place before a lane is opened to traffic; and
4. Permanent striping shall be 6" water-based paint.

VII. TEMPORARY PAVEMENT STRIPING

Conflicting pavement skip lines and/or solid lines through the length of the MOT for lane closures and other striping, as directed by the Engineer, shall be temporarily covered with 8" black removable tape.

The Contractor shall replace any temporary striping that becomes damaged or fails to adhere to the pavement before dark on the day of notification. Liquidated damages shall be assessed the Contractor at a rate of \$500 per day for failing to replace temporary striping within this time limit.

Cover or remove/replace conflicting Interstate shields in pavement to satisfaction of the Engineer.

VIII. PROJECT PHASING

Maintain three 12-foot lanes of traffic and full shoulder at all times except as noted otherwise.

The lane adjacent to the roadway crown (Phase 1 – Lane 4 and Phase 2 – Lane 3) may be reduced to 10-foot minimum from 9:00 PM to 5:00 AM to facilitate work activities at the crown. The other two lanes shall maintain a 12-foot lane width. Maintain a 12-foot lane width when there are no work activities at the crown or as directed by the Engineer.

Night work is allowed on this project. The method of lighting must be submitted to and approved by the Engineer prior to use.

Nightly lane closures between 9:00 PM and 5:00 AM are permitted prior to Phase 1 to obtain field measurements for fabrication of new finger plate assembly at Joint L23'. No construction activities are permitted during this time.

All Phase 1 and Phase 2 work shall be completed in lane closures ending at 5:00 am the last Monday of the closure. Lane and shoulder closures will not be permitted at any other times.

PHASE 1: For Phase 1A and 1B, close the three lanes (lanes 1 to 3) and inside shoulder on the east side of the Kennedy Bridge. The three open lanes will consist of two for SB I-65, and one for the I-64 and I-71 Ramps. Phase 1C will consist of closing two lanes (lanes 1 to 2) and inside

shoulder on the east side of the Kennedy Bridge, from Joint L23 to the southernmost finger joint at Joint L0.

Phase 1A: Extend lane closure to Joint L23'. Work on Joint L23' Reconstruction Only.

Phase 1B: After substantial completion of work activities at Joint L23', and as directed by the Engineer, extend the lane closure to Joint L23.

Phase 1C: During the last weekend of Phase 1 extend the closure to the southernmost finger joint at Joint L0.

PHASE 2: Phase 2A will consist of closing the three lanes (lanes 4 to 6) and outside shoulder on the west side of the Kennedy Bridge. The three open lanes will consist of two for SB I-65, and one for the I-64 and I-71 Ramps. Phase 2B will consist of closing four lanes (lanes 3 to 6) and outside shoulder on the west side of the Kennedy Bridge, from Joint L23 to the southernmost finger joint at L0.

Phase 2A: Extend lane closure to Joint L23.

Phase 2B: During the last weekend of Phase 2 extend the closure to the southernmost finger joint at Joint L0.

IX.. PORTABLE CHANGEABLE MESSAGE SIGNS

The contractor shall provide a minimum of six (6) Portable Changeable Message Signs located in advance of, or on the project at locations to be determined by the Engineer, at each phase of the project. Portable Changeable Message Signs shall be in operation during all lane closures and for the immediate seven (7) days prior to the closure. The message required to be provided shall be designated by the Engineer. The Portable Changeable Message Signs shall be in operation at all times. In the event of damage or mechanical/electrical failure, the Contractor shall repair or replace the Portable Changeable Message Sign within 24 hours.

See the attached "SPECIAL NOTE FOR PORTABLE CHANGEABLE MESSAGE SIGNS".

X. TRUCK MOUNTED ATTENUATORS

Furnish and install MUTCD approved truck mounted attenuators (TMA) in advance of work areas when workers are present less than 12 feet from traffic. If there is less than 500 feet between work sites, only a single TMA will be required at a location directed by the Engineer. Locate the TMAs at the individual work sites and move them as the work zone moves within the project limits. All details of the TMA installations shall be approved by the Engineer.

XI. BARRELS

Barrels are to be used for channelization or delineation of the closed/active lane lines and tapers. Replacements for damaged barrels directed by the Engineer to be replaced due to poor condition or reflectivity.

PROJECT SITE MAP
CID 192607
John F Kennedy Bridge (I-65 SB) over Ohio River
Jefferson County
Louisville, Kentucky
056B00214L



FILE NAME: P:\PROJECTS\151918 - 2016-17 OHIO RVR BRIDGE INSPECTION\2016\FINGER JOINT INVESTIGATION\CA01\TITLE.DGN
 USER: Moryl, Dwyer
 DATE PLOTTED: JULY 18, 2019
 C-SHEET NAME: S23464 001
 MICROSATION V8.11.9.459
 CONSTRUCTION PROJECT NO.
 LETTING DATE

TRANSPORTATION CABINET DEPARTMENT OF HIGHWAYS

JEFFERSON COUNTY I-65 SOUTHBOUND OVER OHIO RIVER FINGER JOINT REPAIR

SHEET INDEX	
SI	TITLE SHEET
S2-S3	GENERAL NOTES
S4	BRIDGE PLAN AND ELEVATION
S5	TYPICAL SECTION
S6	JOINT L0 DETAILS
S7	JOINT L23 DETAILS
S8	JOINT L23 DETAILS
S9	JOINT L23 REMOVAL DETAILS
S10	JOINT L23 TYPICAL SECTION
S11	JOINT L23 RECONSTRUCTION
S12	JOINT L0 DETAILS
S13	BILL OF REINFORCEMENT
S14-S15	MAINT OF TRAFFIC SECTIONS
S16-S31	MAINTENANCE OF TRAFFIC

SPECIAL NOTES
 FOR CONTRACT COMPLETION DATE AND LIQUIDATED DAMAGES
 ON BRIDGE REPAIR CONTRACT
 FOR PORTABLE CHANGEABLE MESSAGE SIGNS
 FOR TEMPORARY WORKSITE SPEED LIMIT SIGN ASSEMBLY
 FOR TRAFFIC CONTROL ON BRIDGE REPAIR CONTRACTS

SPECIAL PROVISIONS

STANDARD DRAWINGS

SPECIFICATIONS
 2019 Standard Specifications for Road and Bridge
 Construction Including supplemental specifications.
 2017 AASHTO LRFD Bridge Design Specifications.
 2017 AASHTO LRFD Bridge Construction Specifications.

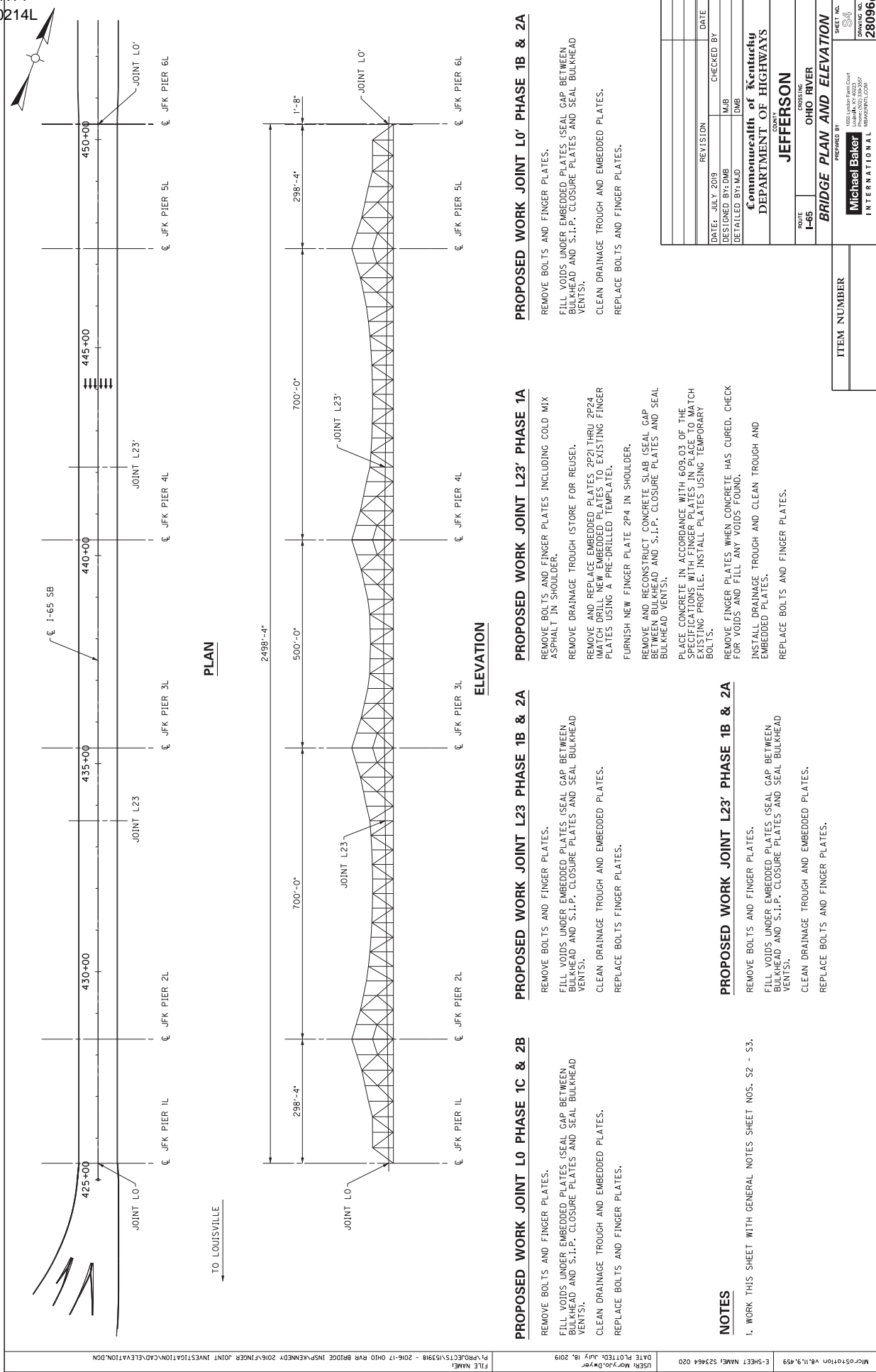
REVISION	DATE
DESIGNED BY: DMB	CHECKED BY:
DETAILED BY: DMB	DMB

Commonwealth of Kentucky
 DEPARTMENT OF HIGHWAYS
 COUNTY: **JEFFERSON**
 CROSSING: **OHIO RIVER**
 ROUTE: **I-65**

SHEET NO. **280996**
 PREPARED BY: **Michael Baker INTERNATIONAL**
 1650 Jordan Park Court
 Louisville, KY 40227
 (502) 261-4000
 WWW.MBI.COM

ESTIMATE OF QUANTITIES									
BID ITEM CODE	DESCRIPTION	UNIT	LS	LS	EACH	LS	LS	LS	LS
	FINGER DAM REPAIR -	LS	1						
	REMOVAL AND REPLACE FINGER	EACH	1						
	EXPANSION JOINT -	LS	1						
	JOINT L23' (PHASE 1)								
	FINGER DAM REPAIR -	LS	1						
	JOINT L23' (PHASE 2)								
	FINGER DAM REPAIR -	LS	1						
	JOINT L23'	LS	1						
	FINGER DAM REPAIR -	LS	1						
	JOINT L0	LS	1						
	MANTAIN AND CONTROL	LS	1						
	TRAFFIC	LS	1						
	BRIDGE TOTALS								

ITEM NUMBER



PLAN

ELEVATION

PROPOSED WORK JOINT L0 PHASE 1C & 2B

REMOVE BOLTS AND FINGER PLATES.
FILL VOIDS UNDER EMBEDDED PLATES (SEAL GAP BETWEEN BULKHEAD AND S.I.P., CLOSURE PLATES AND SEAL BULKHEAD VENTS).
CLEAN DRAINAGE TROUGH AND EMBEDDED PLATES.
REPLACE BOLTS AND FINGER PLATES.

PROPOSED WORK JOINT L23 PHASE 1A

REMOVE BOLTS AND FINGER PLATES INCLUDING COLD MIX ASPHALT IN SHOULDER.
REMOVE DRAINAGE TROUGH (STORE FOR REUSE).
REMOVE AND REPLACE EMBEDDED PLATES 2P91 THRU 2P24 WITH NEW EMBEDDED PLATES. EXISTING FINGER PLATES USING A PRE-DRILLED TEMPLATE.
FURNISH NEW FINGER PLATE 2P4 IN SHOULDER.
REMOVE AND RECONSTRUCT CONCRETE SLAB (SEAL GAP BETWEEN BULKHEAD AND S.I.P., CLOSURE PLATES AND SEAL BULKHEAD VENTS).
PLACE CONCRETE IN ACCORDANCE WITH 609.03 OF THE SPECIFICATIONS WITH THE SAME MIXTURE AS THE EXISTING PROFILE. INSTALL PLATES USING TEMPORARY BOLTS.
REMOVE FINGER PLATES WHEN CONCRETE HAS CURED. CHECK FOR VOIDS AND FILL ANY VOIDS FOUND.
INSTALL DRAINAGE TROUGH AND CLEAN TROUGH AND EMBEDDED PLATES.
REPLACE BOLTS AND FINGER PLATES.

PROPOSED WORK JOINT L23 PHASE 1B & 2A

REMOVE BOLTS AND FINGER PLATES.
FILL VOIDS UNDER EMBEDDED PLATES (SEAL GAP BETWEEN BULKHEAD AND S.I.P., CLOSURE PLATES AND SEAL BULKHEAD VENTS).
CLEAN DRAINAGE TROUGH AND EMBEDDED PLATES.
REPLACE BOLTS FINGER PLATES.

PROPOSED WORK JOINT L0 PHASE 1B & 2A

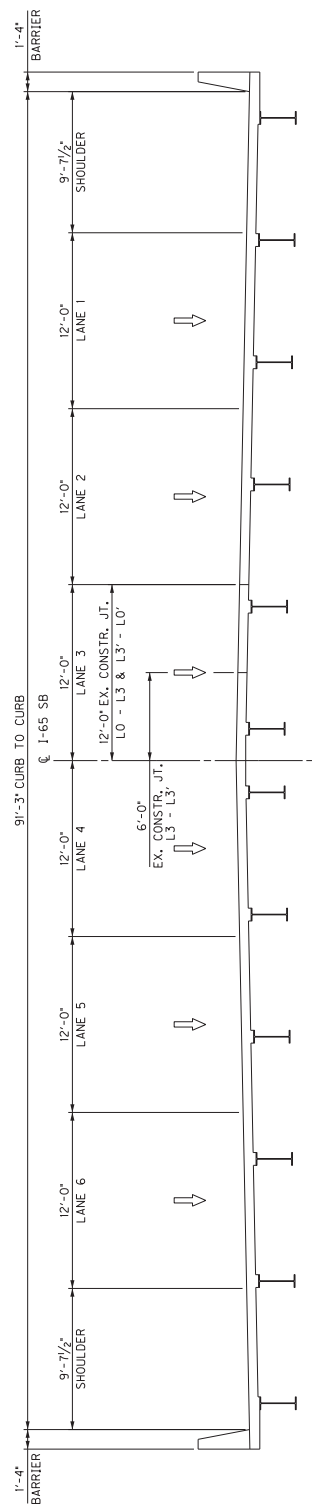
REMOVE BOLTS AND FINGER PLATES.
FILL VOIDS UNDER EMBEDDED PLATES (SEAL GAP BETWEEN BULKHEAD AND S.I.P., CLOSURE PLATES AND SEAL BULKHEAD VENTS).
CLEAN DRAINAGE TROUGH AND EMBEDDED PLATES.
REPLACE BOLTS AND FINGER PLATES.

NOTES

1. WORK THIS SHEET WITH GENERAL NOTES SHEET NOS. S2 - S3.

DATE: JULY 2019	REVISION	CHECKED BY
DESIGNED BY: DMB		MJB
DETAILED BY: DMB		DMB
COMMUNWEALTH of Kentucky DEPARTMENT OF HIGHWAYS COUNTY JEFFERSON		
ROUTE I-65	CROSSING OHIO RIVER	
BRIDGE PLAN AND ELEVATION PREPARED BY Michael Baker		
1650 Lyndon Park Court Louisville, KY 40227 WWW.MBI.COM INTERNATIONAL		
SHEET NO. 28096		

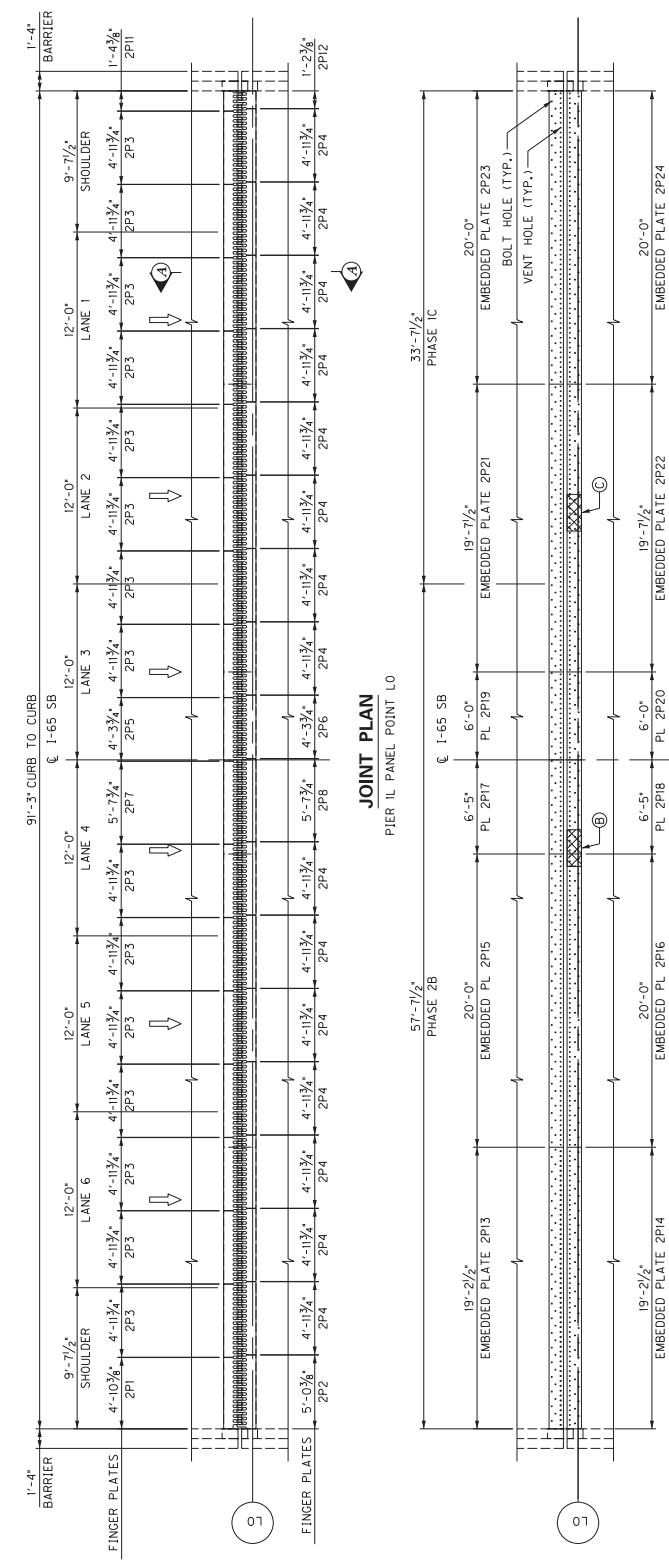
ITEM NUMBER



TYPICAL SECTION
 LOOKING AHEAD STATION

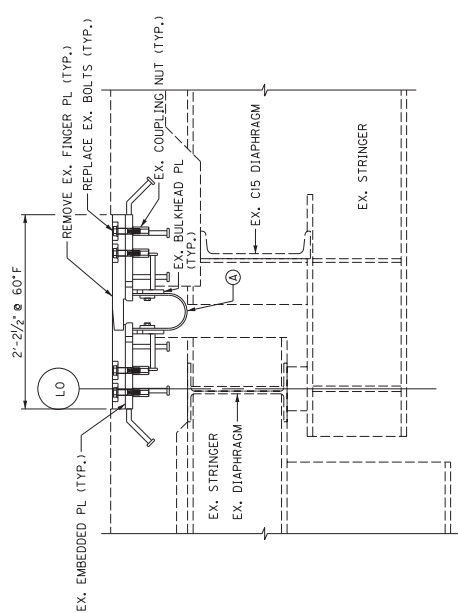
DATE: JULY 2019	REVISION	CHECKED BY
DESIGNED BY: DMB		DMB
DETAILED BY: DMB		DMB
Commonwealth of Kentucky DEPARTMENT OF HIGHWAYS		
JEFFERSON COUNTY		
ROUTE I-65	CROSSING OHIO RIVER	
TYPICAL SECTION		
PREPARED BY Michael Baker INTERNATIONAL		
SHEET NO. 28096		
<small>1650 Ludlow Park Court Louisville, KY 40227 (502) 496-7700 WWW.MBI.COM</small>		

ITEM NUMBER



JOINT PLAN

PIER ILL PANEL POINT LO
FINGER PLATES REMOVED
STUDS NOT SHOWN FOR CLARITY



SECTION A-A

NOTES

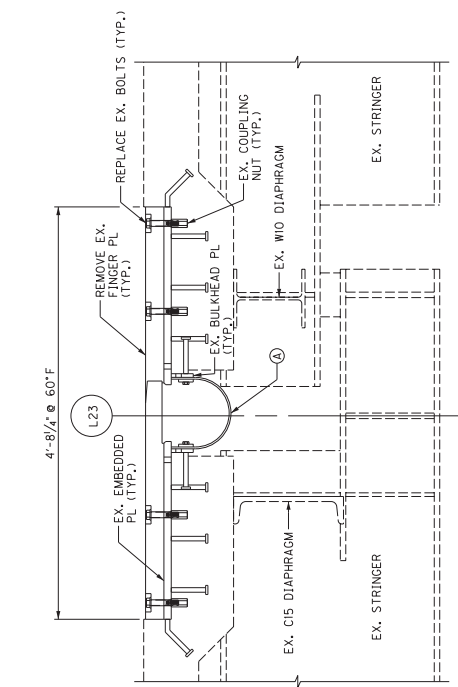
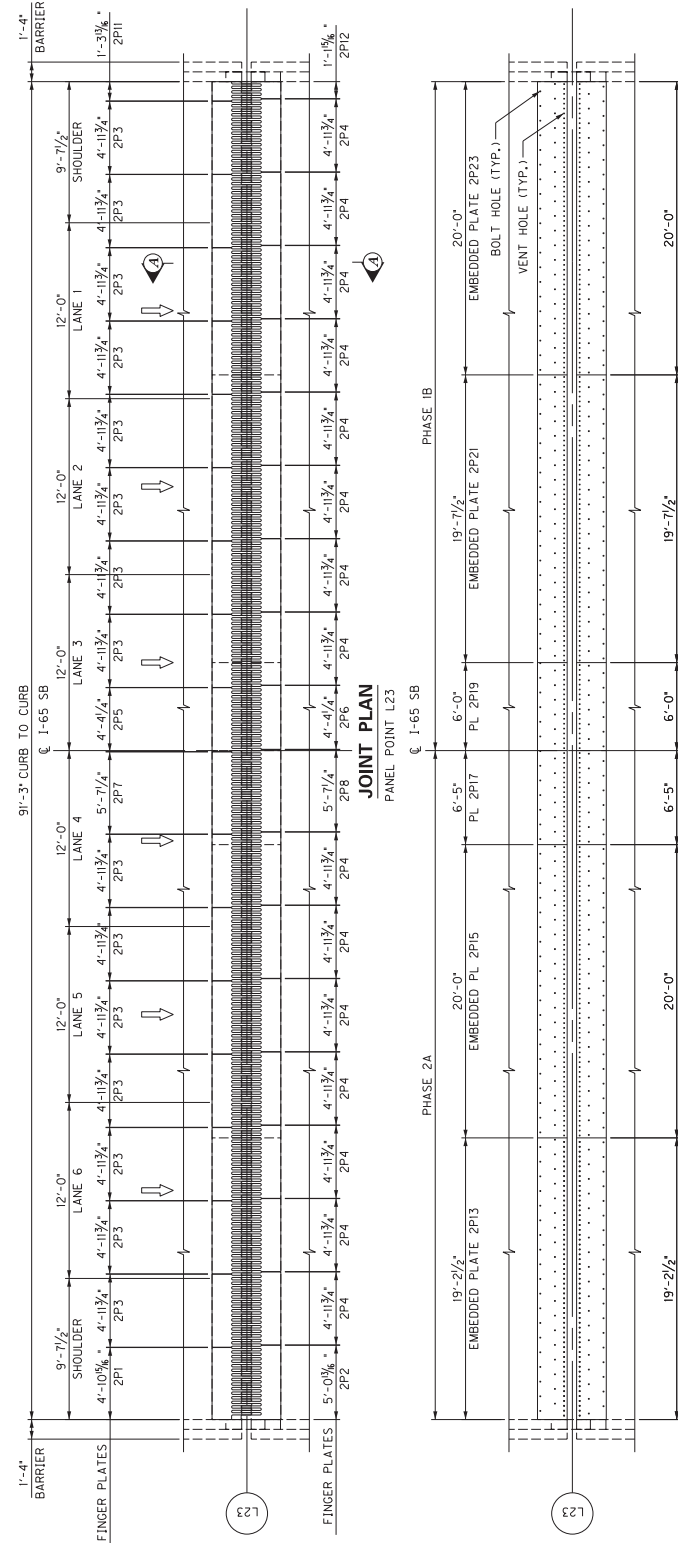
1. FOR GENERAL NOTES, SEE SHEET NOS. S2 - S3.
2. FOR SEQUENCE OF CONSTRUCTION, SEE SHEET NO. S4.
3. FOR DETAILS NOT SHOWN, SEE I-65 SB AS-BUILT PLANS AND FINGER JOINT SHOP DRAWINGS.

LEGEND

- XXXX VOID LOCATION
- (A) CLEAN EX. DRAINAGE TROUGH
- (B) FILL VOID APPROX. 6" DEEP x 30"
- (C) FILL VOID APPROX. 1 1/2' DEEP x 30"

DATE: JULY 2019	REVISION	CHECKED BY	DATE
DESIGNED BY: DMB		MJB	
DETAILED BY: DMB		DMB	
Commonwealth of Kentucky COUNTY OF JEFFERSON DEPARTMENT OF HIGHWAYS			
ROUTE I-65		CROSSING OHIO RIVER	
PROJECT NO. J011010 SHEET NO. 280096			
PREPARED BY Michael Baker INTERNATIONAL 1650 Under Park Court Louisville, KY 40227 (502) 261-4000 WWW.MBI.COM			

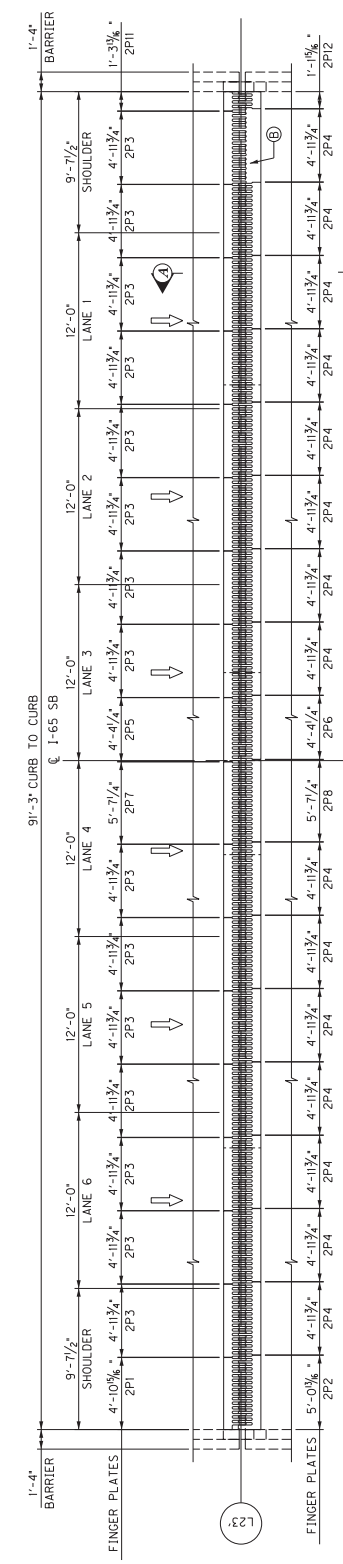
ITEM NUMBER



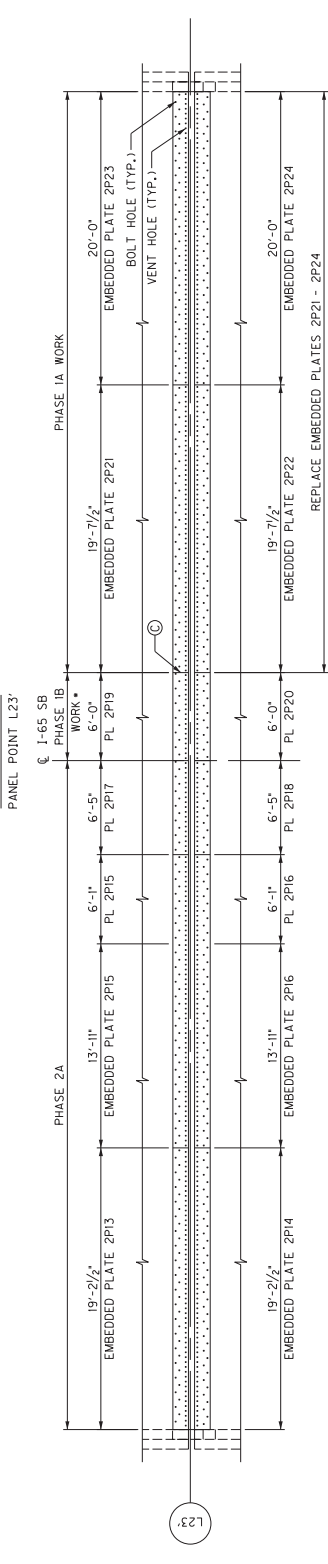
- NOTES**
1. FOR GENERAL NOTES, SEE SHEET NOS. S2 - S3.
 2. FOR SEQUENCE OF CONSTRUCTION, SEE SHEET NO. S4.
 3. FOR DETAILS NOT SHOWN, SEE J-65 SB AS-BUILT PLANS AND FINGER JOINT SHOP DRAWINGS.
- LEGEND**
- (A) CLEAN EX. DRAINAGE TROUGH

DATE: JULY 2019	REVISION	CHECKED BY	DATE
DESIGNED BY: DMB		MJB	
DETAILED BY: DMB		DMB	
Commonwealth of Kentucky DEPARTMENT OF HIGHWAYS			
COUNTY JEFFERSON			
ROUTE I-65	CROSSING OHIO RIVER		
JOINT L23 DETAILS			
PREPARED BY Michael Baker INTERNATIONAL			
SHEET NO. S7			
CONTRACT NO. 28096			

ITEM NUMBER



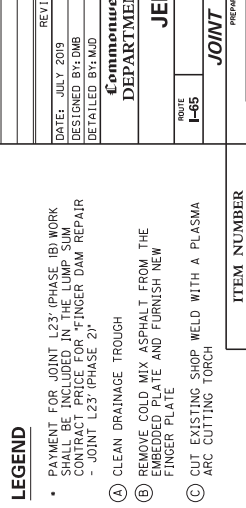
JOINT PLAN
PANEL POINT L23'



JOINT PLAN
PANEL POINT L23'



REMOVE EX. FINGER PL. (TYP.)
FINGER PLATES REMOVED
STUDS NOT SHOWN FOR CLARITY



SECTION A-A

NOTES

- FOR GENERAL NOTES, SEE SHEET NOS. S2 - S3.
- FOR SEQUENCE OF CONSTRUCTION, SEE SHEET NO. S4.
- FOR DETAILS NOT SHOWN, SEE I-65 SB AS-BUILT PLANS AND FINGER JOINT SHOP DRAWINGS.
- FOR ADDITIONAL JOINT L23' PHASE IA REMOVAL DETAILS, SEE SHEET NO. S9.

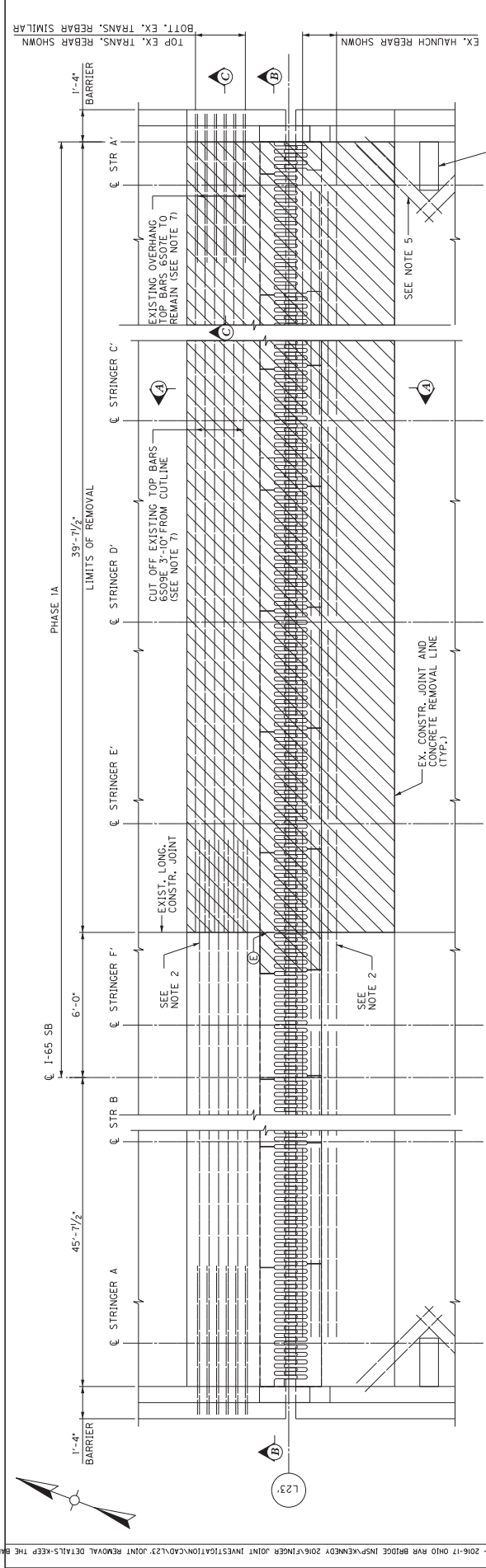
LEGEND

- PAYMENT FOR JOINT L23' (PHASE IB) WORK SHALL BE INCLUDED IN THE LUMP SUM CONTRACT PRICE FOR FINGER DAM REPAIR - JOINT L23' (PHASE 2)
- CLEAN DRAINAGE TROUGH
- REMOVE COLD MIX ASPHALT FROM THE EMBEDDED PLATE AND FURNISH NEW FINGER PLATE
- CUT EXISTING SHOP WELD WITH A PLASMA ARC CUTTING TORCH

REVISION	DATE	CHECKED BY
DATE: JULY 2019		
DESIGNED BY: DMB		
DETAILS BY: DMB		

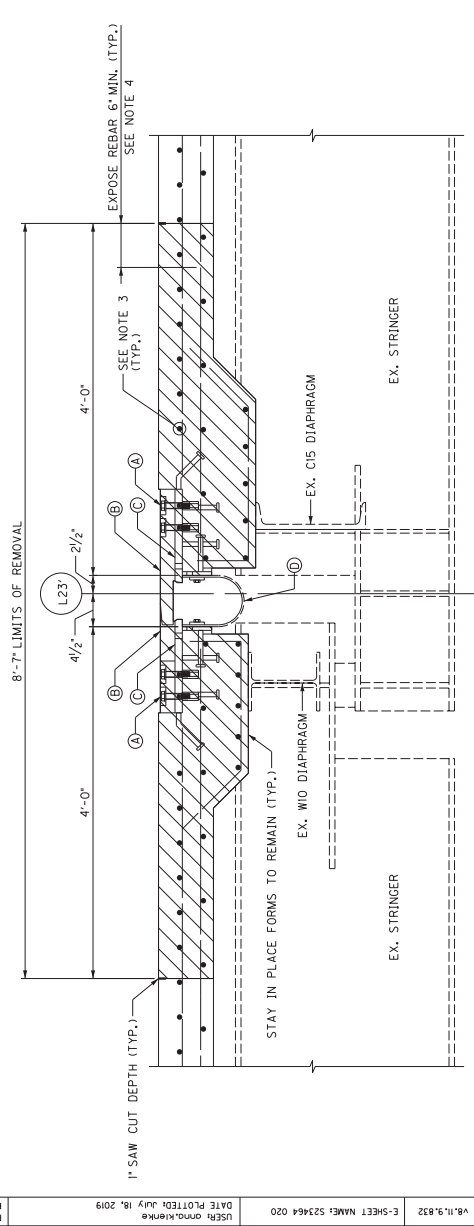
Commonwealth of Kentucky
 COUNTY: **JEFFERSON**
 DEPARTMENT OF HIGHWAYS
 CROSSING: **OHIO RIVER**
 ROUTE: **I-65**
 PROJECT NO.: **JOINT L23' - DETAILS**
 PREPARED BY: **Michael Baker INTERNATIONAL**
 SHEET NO.: **28096**
 CONTRACT NO.: **1650 Under Pass Cont. (under I-65) 2017**
 DRAWING NO.: **1650-2017-0001**

ITEM NUMBER



EXISTING JOINT PLAN

PANEL POINT L23'
LONGITUDINAL REINFORCING NOT SHOWN FOR CLARITY



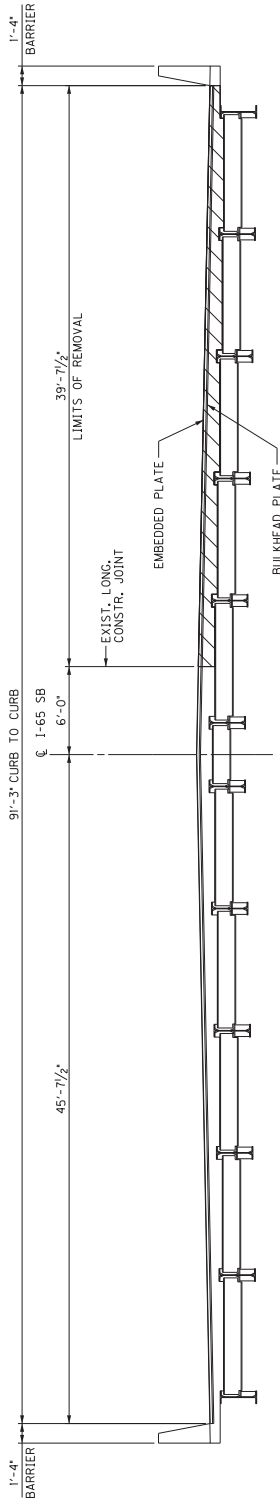
LEGEND

- REMOVAL LIMITS
- A REMOVE AND DISCARD EXISTING BOLTS AND WASHERS IN FINGER PLATES.
- B REMOVE FINGER PLATE. MATCH MARK FOR REUSE.
- C REMOVE EXISTING EMBEDDED PLATE AND ATTACHMENTS.
- D REMOVE EXISTING DRAINAGE TROUGH AND HARDWARE. STORE FOR REUSE.
- E CUT EXISTING EMBEDDED PLATE SHOP WELD WITH PLASMA ARC CUTTING TORCH.

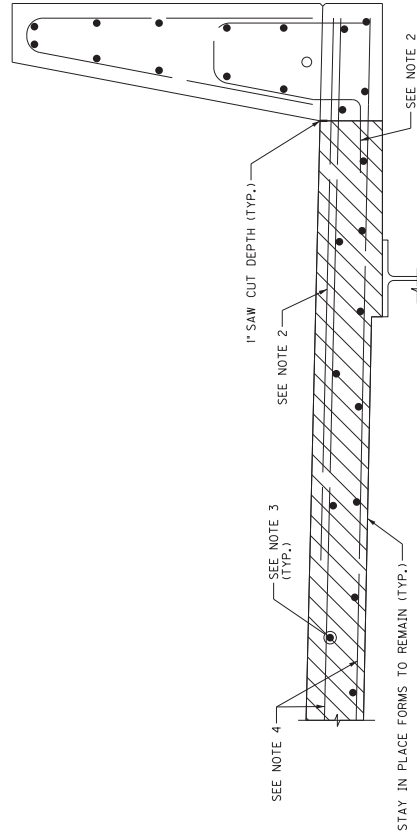
NOTES

1. SEE GENERAL NOTES FOR PLANS OF EXISTING STRUCTURE AND WORK ITEMS.
2. REMOVE CONCRETE WITH A METHOD THAT WILL NOT DAMAGE EXISTING REINFORCEMENT TO REMAIN IN THE STRUCTURE. LEAVE TRANSVERSE REINFORCEMENT THAT EXTENDS PAST THE EXISTING LONGITUDINAL JOINT IN PLACE.
3. EXISTING TRANSVERSE REBAR WITHIN THE LIMITS OF THE CONSTRUCTION SHALL BE REMOVED AND REPLACED WITH NEW EPOXY COATED BARS OF THE SAME SIZE AND SHAPE AS SHOWN ON THE PLANS.
4. EXISTING LONGITUDINAL REBAR WITHIN THE LIMITS OF THE CONSTRUCTION AS SHOWN ON THE PLANS SHALL BE LEFT IN PLACE. REMOVE THE SLAB REMOVAL LINE CONCRETE SHALL BE REMOVED TO EXPOSE A 6" MINIMUM DOWEL TO JOIN TO NEW REBAR USING A MECHANICAL LAP SPLICE. BLAST CLEAN THE EXPOSED REINFORCEMENT FOR PROPER ADHESION. MECHANICAL COUPLED MECHANICAL COUPLER SHALL CONFORM TO 602.03.06 OF THE SPECIFICATIONS.
5. LEAVE DECK DRAIN REINFORCEMENT THAT EXTENDS PAST CONCRETE REMOVAL LINE IN PLACE. REMOVE CONCRETE WITH A METHOD THAT WILL NOT DAMAGE EXISTING REINFORCEMENT TO REMAIN IN THE STRUCTURE.
6. SEE SHEET NO. S10 FOR SECTIONS B-B AND C-C.
7. FOR EXISTING REBAR, SEE I-65 SB AS-BUILT ORBP REHAB PLANS.

DATE: JULY 2019	DESIGNED BY: DMB	DETAILED BY: DMB	REVISION	CHECKED BY	DATE
Commonwealth of Kentucky DEPARTMENT OF HIGHWAYS COUNTY: JEFFERSON CROSSING: OHIO RIVER ROUTE: I-65 PROJECT: JOINT L23' REMOVAL DETAILS			SHEET NO. 280096 PREPARED BY: Michael Baker INTERNATIONAL 1650 Linden Farm Court Louisville, KY 40227 info@mbakercorp.com www.mbakercorp.com		



SECTION B-B
 PANEL POINT L23'
 REINFORCING NOT SHOWN FOR CLARITY



SECTION C-C

LEGEND

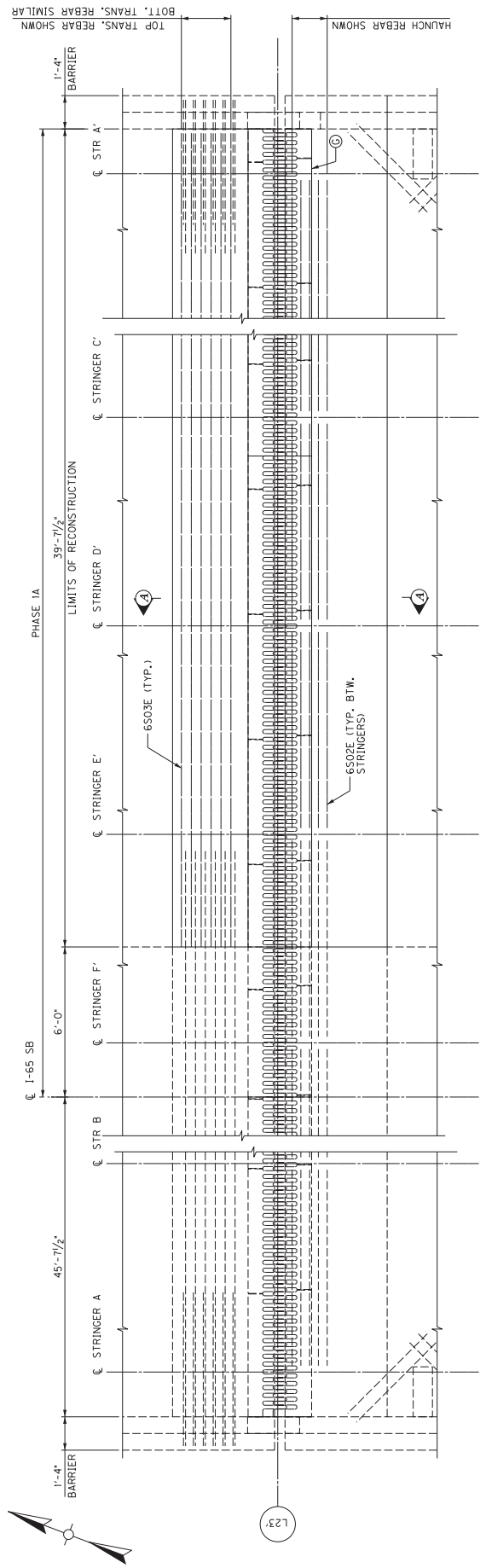
REMOVAL LIMITS

NOTES

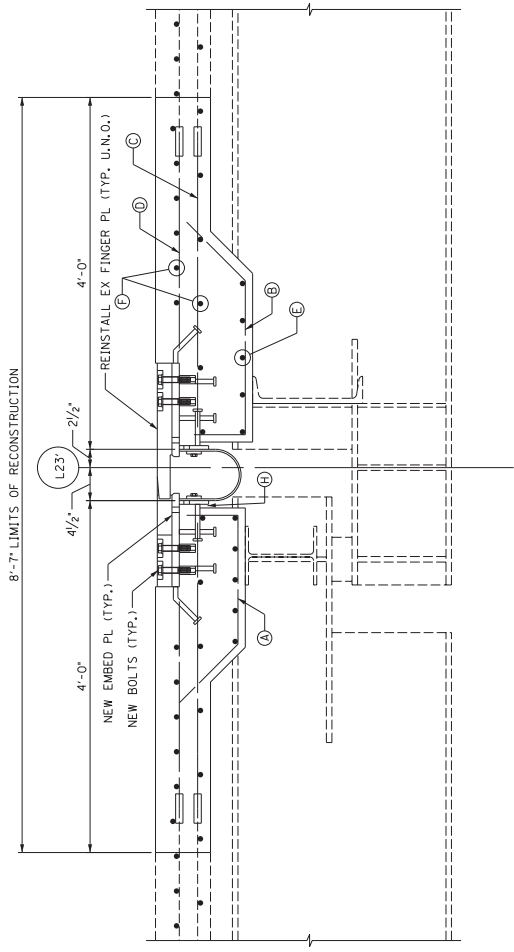
1. SEE GENERAL NOTES FOR PLANS OF EXISTING STRUCTURE AND WORK ITEMS.
2. LEAVE BARRIER REINFORCEMENT THAT EXTENDS INTO THE SLAB AND TRANSVERSE REBAR IN PLACE. REMOVE EXISTING CONCRETE WITH A METHOD THAT WILL NOT DAMAGE EXISTING REINFORCEMENT TO REMAIN IN THE STRUCTURE.
3. EXISTING LONGITUDINAL REBAR WITHIN THE LIMITS OF THE CONSTRUCTION SHALL BE REMOVED AND REPLACED WITH NEW EPOXY COATED BARS OF THE SAME SIZE AND SHAPE AS SHOWN ON THE PLANS.
4. EXISTING TRANSVERSE REBAR WITHIN THE LIMITS OF THE CONSTRUCTION AS SHOWN ON THE PLANS SHALL BE CUTOFF 3'-10" FROM THE FACE OF THE CONSTRUCTION. CONCRETE SHALL BE REMOVED TO EXPOSE A 3'-10" MINIMUM DOVEL TO LAP WITH NEW REBAR. BLAST CLEAN THE EXPOSED REINFORCEMENT.
5. SEE SHEET NO. S9 FOR LOCATIONS OF SECTION B-B AND C-C.

DATE: JULY 2019	REVISION	CHECKED BY	DATE
DESIGNED BY: DMB		MJB	
DETAILED BY: DMB		DMB	
Commonwealth of Kentucky DEPARTMENT OF HIGHWAYS			
COUNTY JEFFERSON			
ROUTE I-65	CROSSING OHIO RIVER	PROJECT NO. JOINT L23' TYPICAL SECTION	SHEET NO. S10
PREPARED BY Michael Baker INTERNATIONAL			CONTRACT NO. 28096

ITEM NUMBER



JOINT RECONSTRUCTION PLAN
 PANEL POINT L23'
 LONGITUDINAL REINFORCING NOT SHOWN FOR CLARITY



SECTION A-A

LEGEND

- (A) 37-550IE SPACE WITH BOTTOM LONGITUDINAL BARS
- (B) 37-550IE SPACE WITH BOTTOM LONGITUDINAL BARS
- (C) 39-650IE (MECHANICAL LAP SPLICE WITH EXISTING #6 LONGITUDINAL BARY(TYP.))
- (D) 26-5503E (MECHANICAL LAP SPLICE WITH EXISTING #5 LONGITUDINAL BARY(TYP.))
- (E) 5-6502E BETWEEN STRINGERS E' THRU A' (TYP.)
- (F) 6-6503E (TOP) & 6-6503E (BOTTOM) 3'-7" MINIMUM LAP SPLICE WITH EXISTING #6 TRANSVERSE BAR BOTH ENDS (TYP.)
- (G) FURNISH AND INSTALL NEW FINGER PLATE
- (H) SEAL GAP BETWEEN EXISTING SITUATION-IN-PLACE CLOSURE FORM AND NEW CONCRETE PRIOR TO PLACING CONCRETE (TYP.)

NOTES

- 1. SEE GENERAL NOTES FOR BRIDGE ITEMS AND PLANS OF EXISTING STRUCTURE.

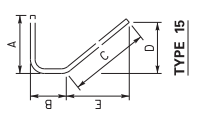
DATE: JULY 2019	REVISION	CHECKED BY
DESIGNED BY: DMB		DMB
DETAILED BY: DMB		DMB
Commonwealth of Kentucky DEPARTMENT OF HIGHWAYS COUNTY: JEFFERSON		
ROUTE: I-65	CROSSING: OHIO RIVER	
JOINT L23' RECONSTRUCTION PREPARED BY:		
SHEET NO. 51	CONTRACT NO. 280096	

ITEM NUMBER

Michael Baker INTERNATIONAL
 1650 Lyndon Park Court
 Northbrook, IL 60062
 (847) 442-2000
 MBI@MBINTERNATIONAL.COM

BILL OF REINFORCEMENT

MARK	TYPE	NO.	SIZE	LENGTH FT IN	LOCATION												
					A		B		C		D		E				
					FT	IN	FT	IN	FT	IN	FT	IN	FT	IN	FT	IN	
5501E		158	#5	3	1	14	0	7	1	7	0	11	14	0	8	0	8
5502E		158	#5	3	3	14	0	7	1	9	0	11	14	0	8	0	8
5503E (*)	STR	52	#5	2	10												
6501E (*)	STR	78	#6	3	9												
6502E	STR	40	#6	8	1												
6503E	STR	24	#6	39	4												



- REQUIRES MECHANICAL COUPLERS 52-#5 & 78-#6)
WHERE MECHANICAL COUPLERS ARE REQUIRED, THE REINFORCING BAR LENGTH IS MEASURED TO THE CONSTRUCTION JOINT.
BAR LENGTH ADJUSTMENT MAY BE NECESSARY FOR THE TYPE OF MECHANICAL CONNECTOR FURNISHED.

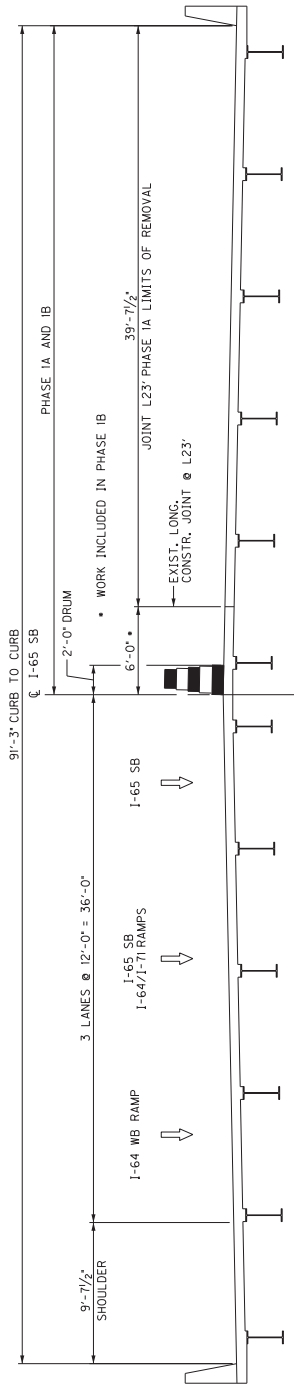
NOTES

- MECHANICAL COUPLERS SHALL BE EPOXY COATED MECHANICAL LAP SPLICE TYPE CONFORMING TO SECTION 602.03.06 OF THE SPECIFICATIONS AND APPROVED BY THE ENGINEER.
PAYMENT FOR MECHANICAL COUPLERS IS CONSIDERED INCIDENTAL TO THE LUMP SUM CONTRACT PRICE FOR "REM AND REPLACE FINGER EXPANSION JOINT - JOINT L23" (PHASE 1)".
- STEEL REINFORCEMENT SHALL BE EPOXY COATED CONFORMING TO SECTION 602 OF SPECIFICATIONS.
ESTIMATED WEIGHT OF STEEL REINFORCEMENT - EPOXY COATED IS 2,743 LBS.
PAYMENT FOR STEEL REINFORCEMENT - EPOXY COATED IS CONSIDERED INCIDENTAL TO THE LUMP SUM CONTRACT PRICE FOR "REM AND REPLACE FINGER EXPANSION JOINT - JOINT L23" (PHASE 1)".
- CONCRETE TO BE USED IN THE SLAB RECONSTRUCTION SHALL BE CLASS "AA" CONFORMING TO SECTION 601 OF THE SPECIFICATIONS.
ESTIMATED VOLUME OF CONCRETE - CLASS "AA" IS 12.0 CY.
PAYMENT FOR CONCRETE - CLASS "AA" IS CONSIDERED INCIDENTAL TO THE LUMP SUM CONTRACT PRICE FOR "REM AND REPLACE FINGER EXPANSION JOINT - JOINT L23" (PHASE 1)".

DATE: JULY 2019	REVISION	DATE
DESIGNED BY: DMB		CHECKED BY
DETAILED BY: DMB		DMB
Commonwealth of Kentucky DEPARTMENT OF HIGHWAYS		
COUNTY JEFFERSON		
ROUTE I-65	CROSSING OHIO RIVER	
BILL OF REINFORCEMENT		
PREPARED BY Michael Baker INTERNATIONAL		
SHEET NO. 53		
CONTRACT NO. 280996		

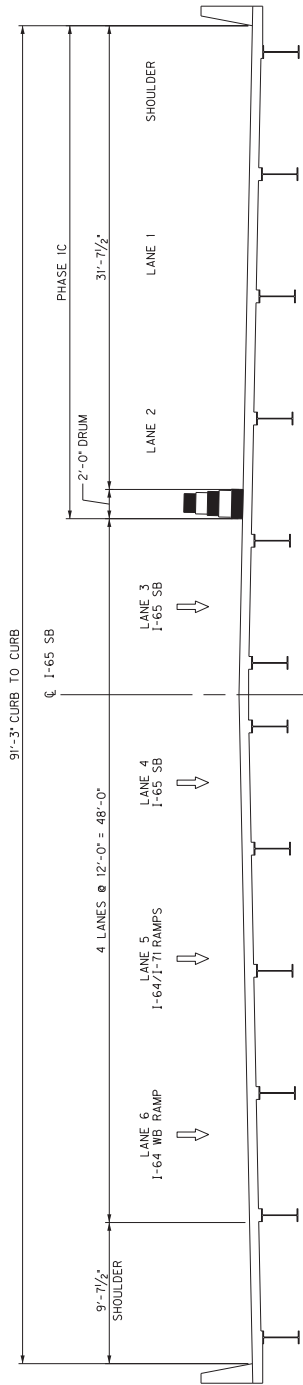
ITEM NUMBER

PHASE 1: CLOSE EAST HALF OF BRIDGE TO TRAFFIC, UNLESS NOTED OTHERWISE.
 PHASE 1A: EXTEND LANE CLOSURE TO JOINT L23; WORK AT JOINT L23; RECONSTRUCTION ONLY.
 PHASE 1B: LANE CLOSURE MAY BE EXTENDED TO JOINT L23; RECONSTRUCTION ONLY.
 PHASE 1C: EXTEND LANE CLOSURE TO JOINT L0; WORK AT JOINT L0; WORK AT ALL JOINTS AT CROWN, EXCEPT L0.



PHASE 1A AND 1B

SECTION IS TAKEN AT L0, L23 AND L23



PHASE 1C

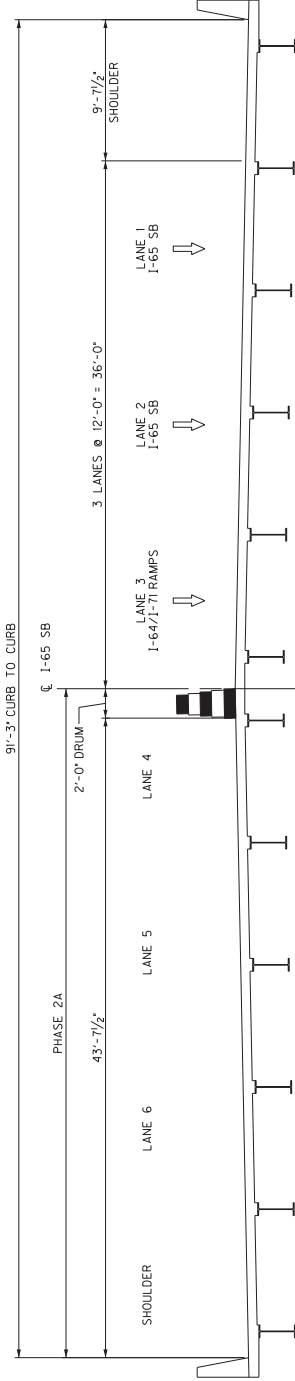
SECTION IS TAKEN AT L0

FILE NAME: P:\PROJECTS\153918 - 2016-17 OHIO RVR BRIDGE INSPECTION\2016\FINER JOINT INVESTIGATION\CA\Maintenance of Traffic.DGN	USER: Morys.Dwyer	DATE PLOTTED: JULY 18, 2019	C-SHEET NAME: S23464 020	MFC-position v8.11.9.823
---	-------------------	-----------------------------	--------------------------	--------------------------

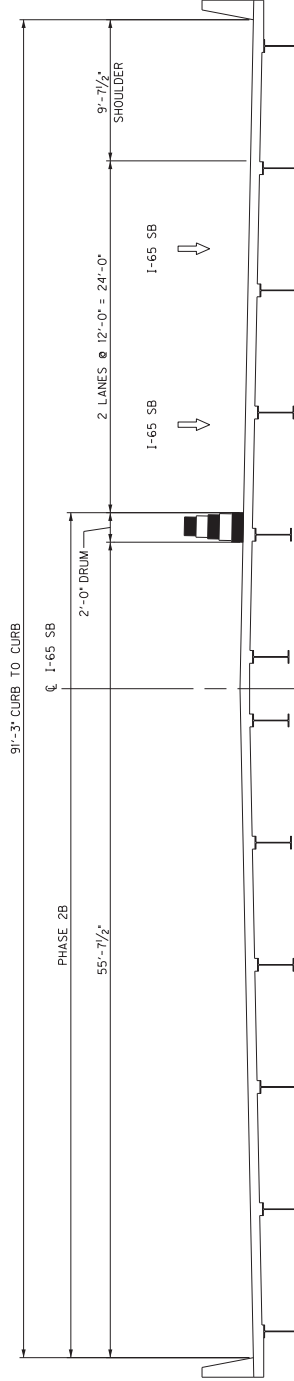
DATE: JULY 2019	REVISION	CHECKED BY
DESIGNED BY: DMG		MJB
DETAILED BY: MJD		JLS
Commonwealth of Kentucky DEPARTMENT OF HIGHWAYS COUNTY: JEFFERSON		
ROUTE: I-65	CROSSING: OHIO RIVER	SHEET NO.: 280996
MAINT OF TRAFFIC SECTION - 1 PREPARED BY: Michael Baker INTERNATIONAL		
<small>1650 Lyndon Park Court Louisville, KY 40227 (502) 496-7000 WWW.MBI.COM</small>		

ITEM NUMBER

PHASE 2: CLOSE WEST HALF OF BRIDGE TO TRAFFIC, UNLESS NOTED OTHERWISE.
 PHASE 2A: EXTEND LANE CLOSURE TO JOINT L23, WORK AT JOINTS L0', L23' AND L23'.
 PHASE 2B: EXTEND LANE CLOSURE TO JOINT L0. REMOVE THE CROWN AT L0. REMOVE THE CROWN AT L23. RAMP FOR LANE 4 AND LANE 5 TO BE PERMITTED TO BE CLOSED DURING PHASE 2B WORK.
 LANE 3 MAY BE REDUCED IN PHASE 2A FOR WORK AT THE PROPOSED ACCORDANCE WITH SPECIAL NOTE FOR TRAFFIC CONTROL ON BRIDGE REPAIR CONTRACTS.



PHASE 2A
 SECTION IS TAKEN AT L0', L23' AND L23

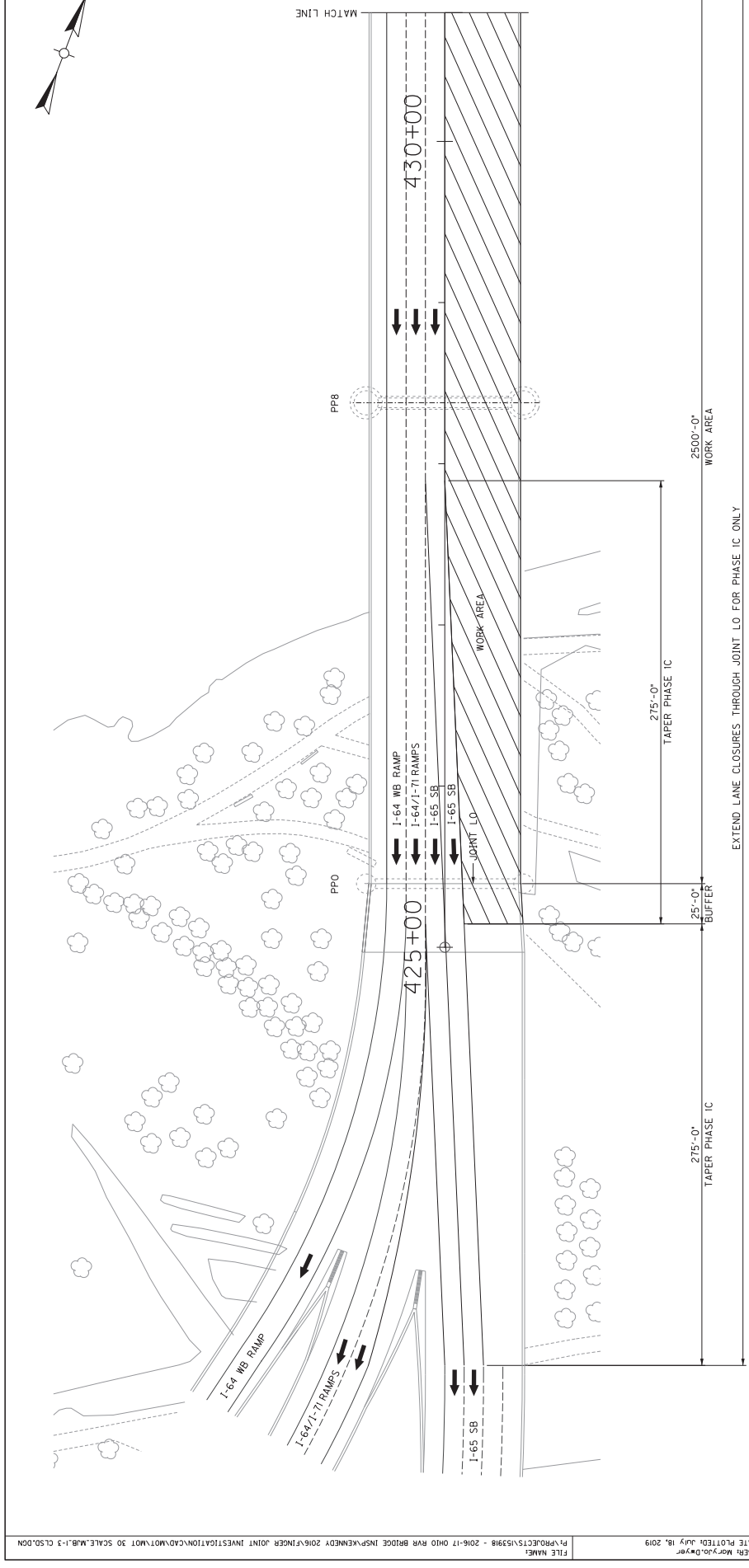


PHASE 2B
 SECTION IS TAKEN AT L0

FILE NAME: M:\Projects\153918 - 2016-17 Ohio RVR Bridge Inspected\2016-17 RVR Bridge Joint Investigation\CAD\Maintenance of Traffic.CAD
 USER: Morys.Dwyer
 DATE PLOTTED: July 18, 2019
 C-SHEET NAME: S23464 020
 MFC:\station\8.11.9.459

REVISION	DATE
DESIGNED BY: DMG	DESIGNED BY: DMG
DETAILED BY: MJD	DETAILED BY: MJD
Commonwealth of Kentucky DEPARTMENT OF HIGHWAYS COUNTY: JEFFERSON	
ROUTE: I-65	CROSSING: OHIO RIVER
MAINT OF TRAFFIC SECTION - 2	
PREPARED BY: Michael Baker INTERNATIONAL	SHEET NO.: 280996
<small>1650 Lyndon Park Court Warrenton, OR 97146 (503) 865-5000 www.mbakercorp.com</small>	

ITEM NUMBER



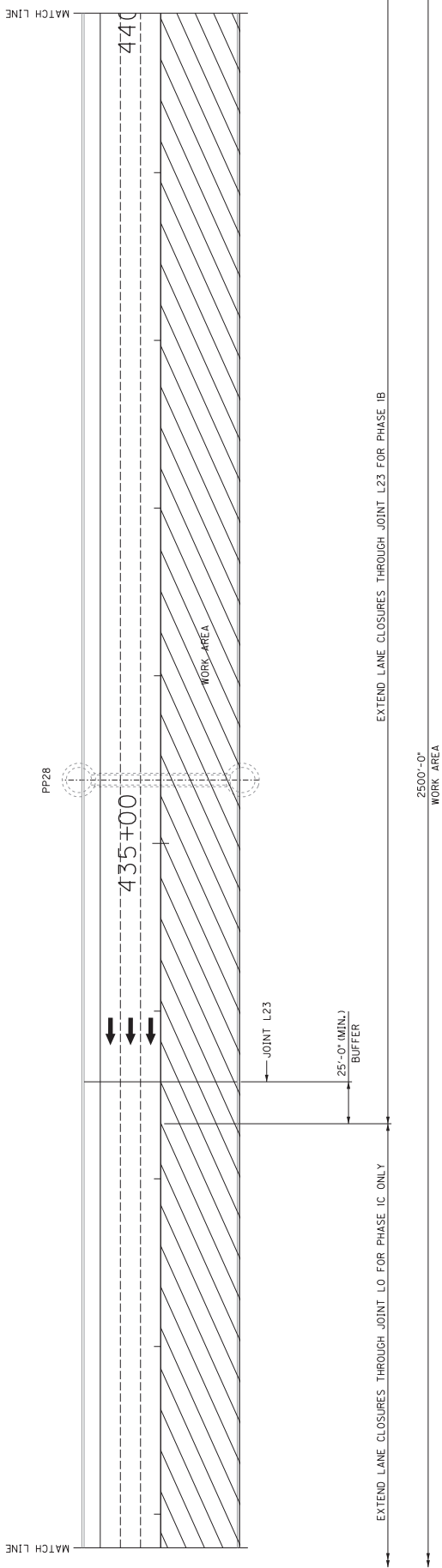
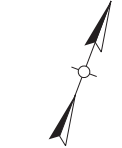
EXTEND LANE CLOSURES THROUGH JOINT LO FOR PHASE 1C ONLY

PHASE 1 PLAN

DATE: JULY 2019	REVISION	CHECKED BY	DATE
DESIGNED BY: MJB		DTK	
DETAILED BY: MJB		DTK	
Commonwealth of Kentucky DEPARTMENT OF HIGHWAYS			
COUNTY JEFFERSON			
ROUTE I-65	CROSSING OHIO RIVER		
MAINTENANCE OF TRAFFIC -- 1			
PREPARED BY Michael Baker		SHEET NO. 28096	
1650 Ludlow Farm Court Louisville, KY 40227 502.261.7000 MBA@MBINTERNATIONAL.COM		CONTRACT NO. 28096	

ITEM NUMBER

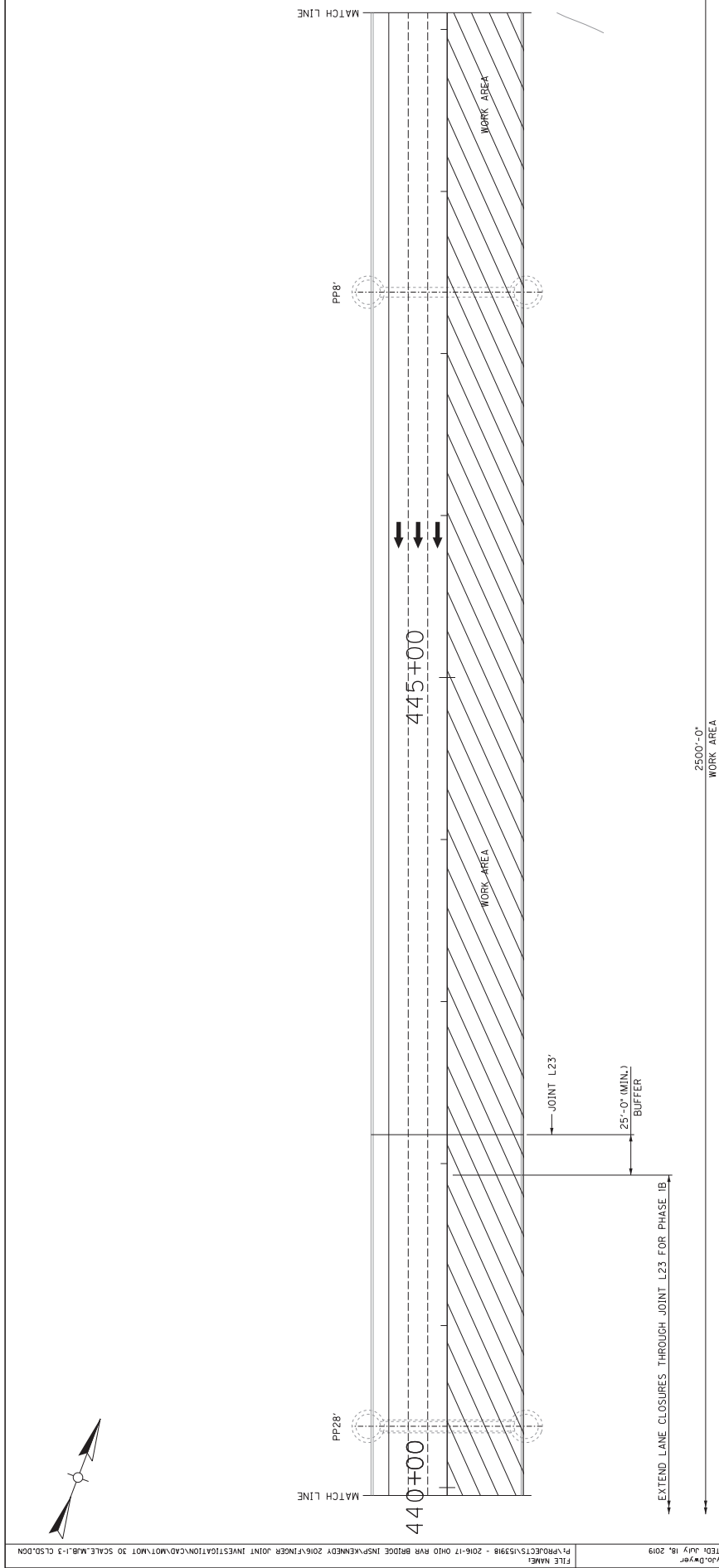
USER: Moryo.D*year DATE PLOTTED: JULY 18, 2019 FILE NAME: F:\PROJECTS\151918 - 2016-17 OHV RVR BRIDGE INSP\KENNEDY 2016\FINER JOINT INVESTIGATION\CA0A.MDT.MOT 30 SCALE.MB.1-3 CLSD.DGN



PHASE 1 PLAN

DATE: JULY 2019	REVISION	CHECKED BY	DATE
DESIGNED BY: MJB		DTK	
DETAILED BY: MJB		DTK	
Commonwealth of Kentucky DEPARTMENT OF HIGHWAYS COUNTY: JEFFERSON CROSSING: OHIO RIVER ROUTE: I-65 PROJECT: MAINTENANCE OF TRAFFIC - 2 PREPARED BY:			
SHEET NO. 57		TOTAL SHEETS 28096	
Michael Baker INTERNATIONAL 1650 Ludlow Farm Court Louisville, KY 40227 (502) 261-7000 WWW.MBI.COM		CONTRACT NO. 28096	

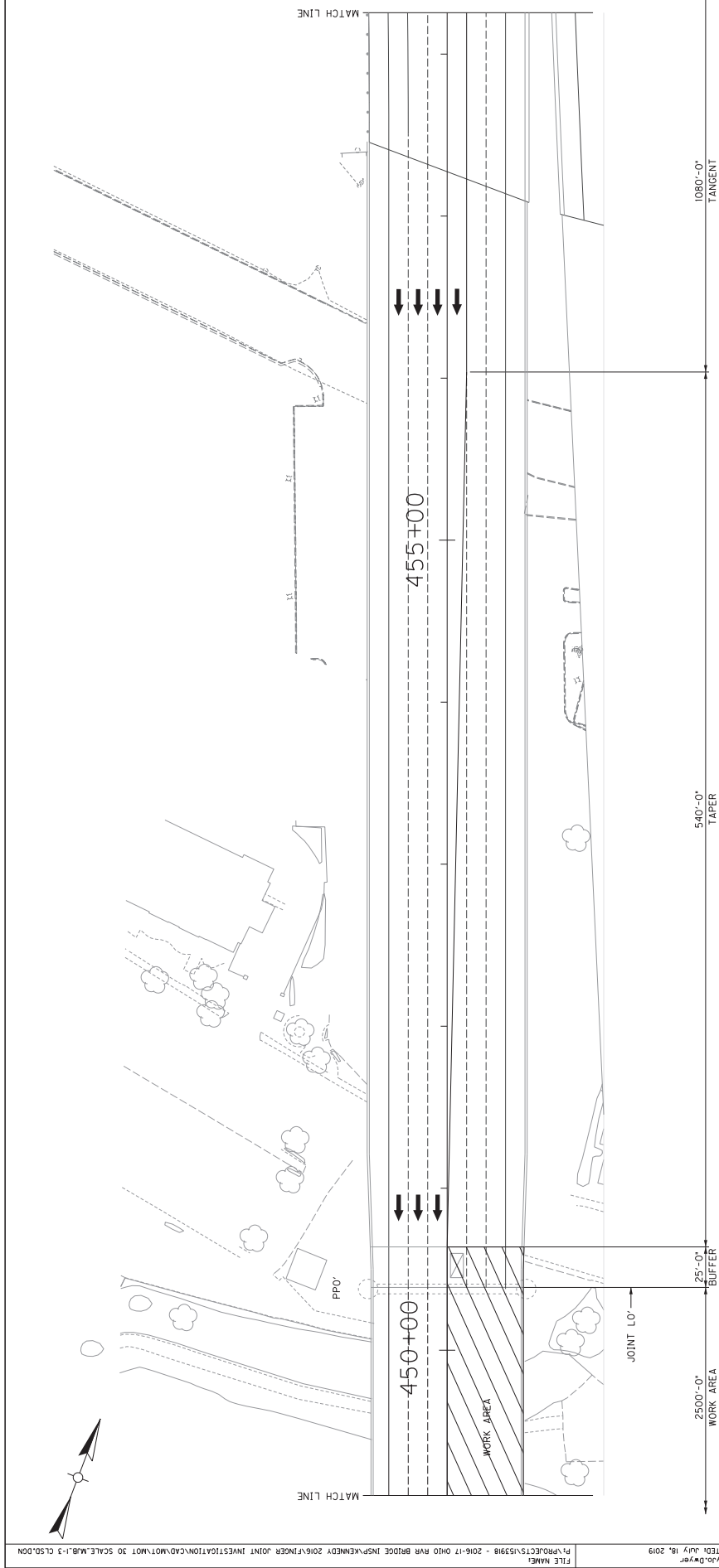
ITEM NUMBER



PHASE 1 PLAN

DATE: JULY 2019	REVISION	CHECKED BY	DATE
DESIGNED BY: MJB		DTK	
DETAILED BY: MJB		DTK	
Commonwealth of Kentucky DEPARTMENT OF HIGHWAYS <small>COUNTY</small> JEFFERSON			
ROUTE I-65	CROSSING OHIO RIVER	PROJECT NO. MAINTENANCE OF TRAFFIC - 3	SHEET NO. 28096
PREPARED BY Michael Baker <small>1650 Jordan Farm Court Leebolt, KY 40327 WWW.MBI.COM</small>		CONTRACT NO. 28096 <small>INTERNATIONAL</small>	

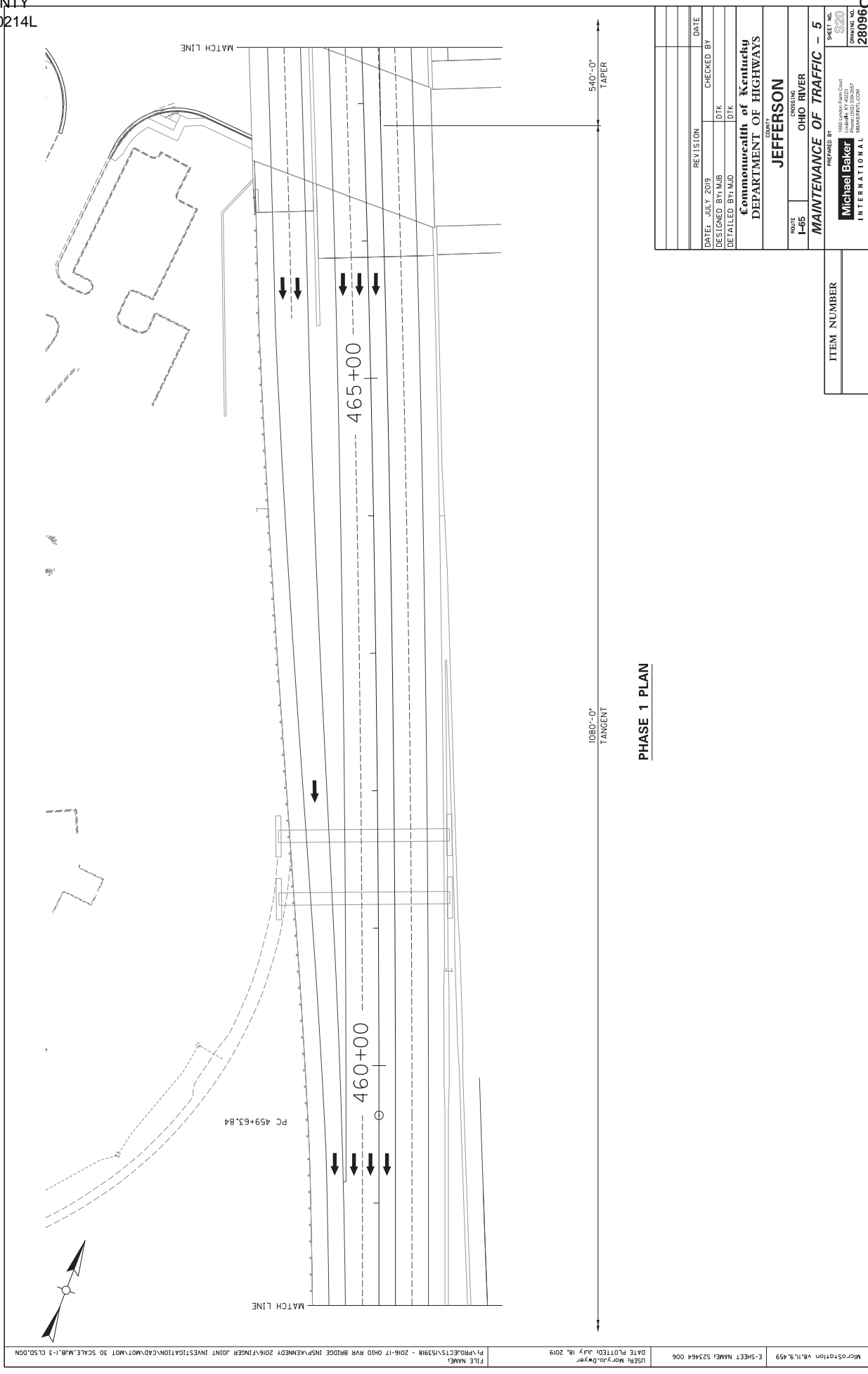
ITEM NUMBER	
-------------	--



PHASE 1 PLAN

DATE: JULY 2019	REVISION	CHECKED BY
DESIGNED BY: MJB		DTK
DETAILED BY: MJB		DTK
Commonwealth of Kentucky DEPARTMENT OF HIGHWAYS		
COUNTY JEFFERSON		
ROUTE I-65	CROSSING OHIO RIVER	SHEET NO. 4
PROJECT BY MAINTENANCE OF TRAFFIC - 4		

ITEM NUMBER



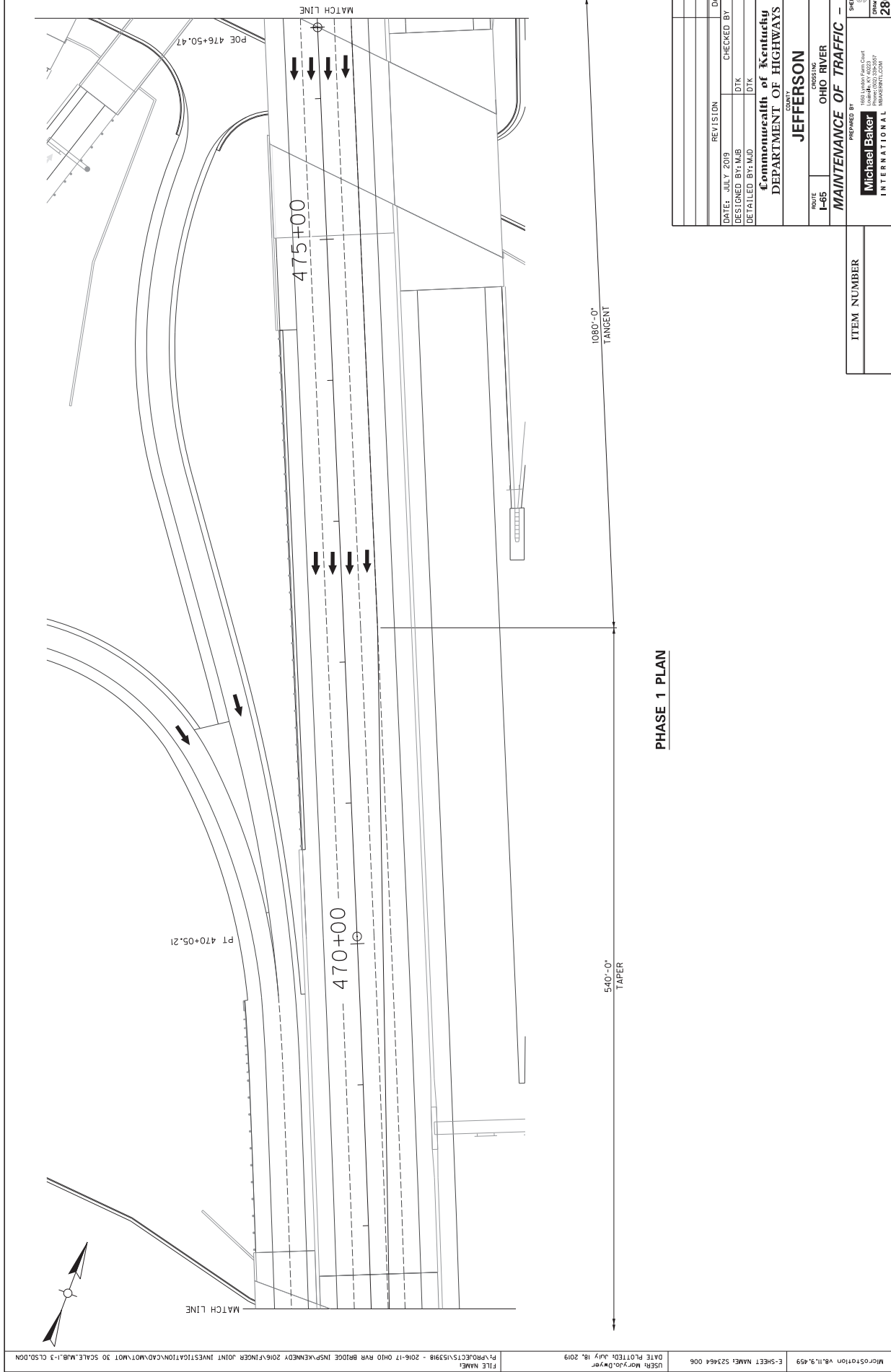
PHASE 1 PLAN

REVISION	DATE	CHECKED BY
DATE: JULY 2019		
DESIGNED BY: MJB		DTK
DETAILED BY: MJB		DTK

Commonwealth of Kentucky
DEPARTMENT OF HIGHWAYS
 COUNTY: **JEFFERSON**
 ROUTE: **I-65** CROSSING: **OHIO RIVER**
MAINTENANCE OF TRAFFIC - 5
 PREPARED BY:

Michael Baker INTERNATIONAL <small>1650 Ludlow Park Court Louisville, KY 40227 (502) 496-4000 MBI@MBI.COM</small>	SHEET NO. S20 CONTRACT NO. 280996
---	--

ITEM NUMBER



PHASE 1 PLAN

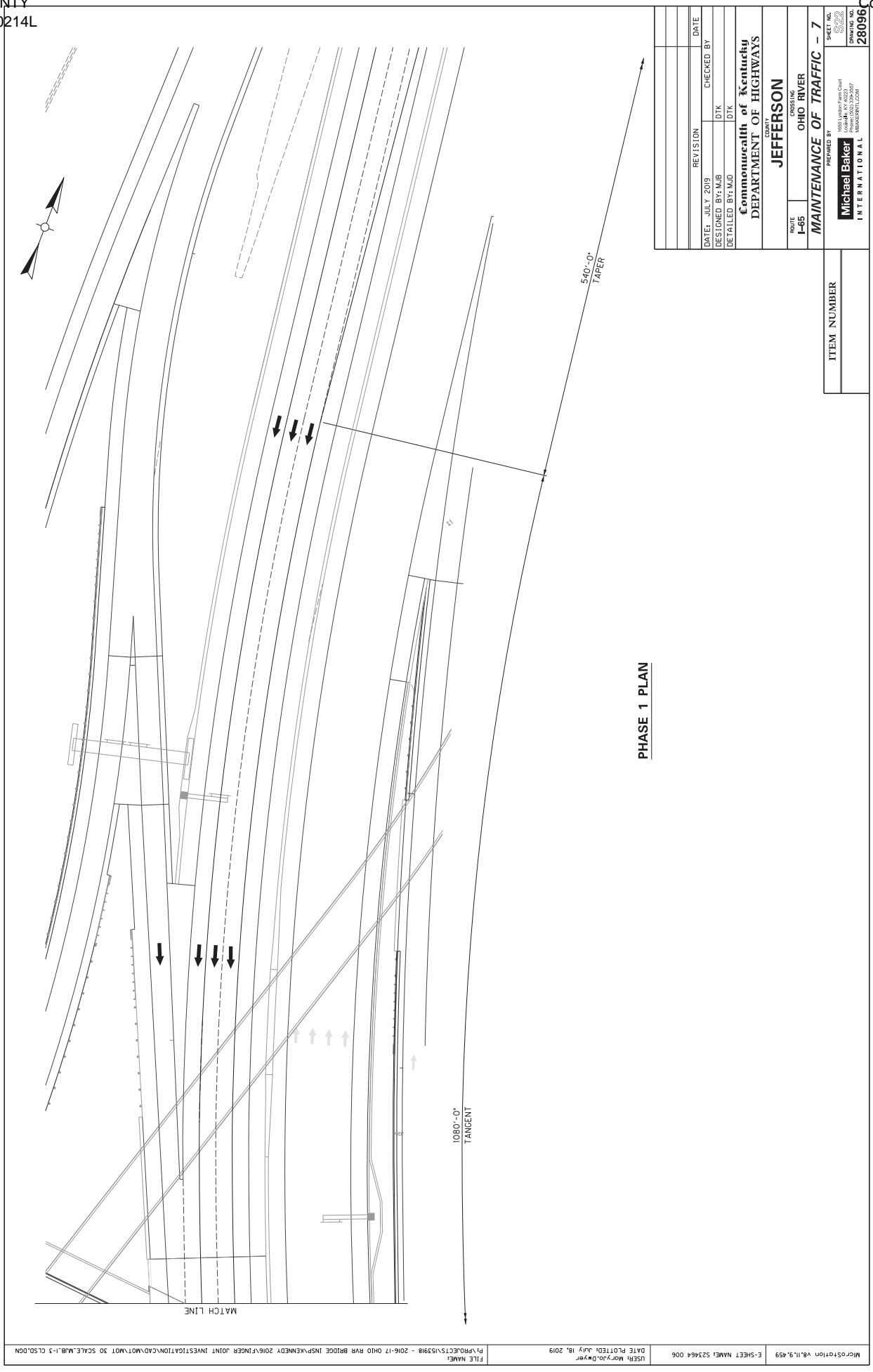
REVISION	DATE	CHECKED BY
DATE: JULY 2019		
DESIGNED BY: MJB		DTK
DETAILED BY: MJB		DTK

Commonwealth of Kentucky
DEPARTMENT OF HIGHWAYS
 COUNTY: **JEFFERSON**
 ROUTE: **I-65** CROSSING: **OHIO RIVER**
MAINTENANCE OF TRAFFIC - 6
 PREPARED BY:

 Michael Baker INTERNATIONAL	SHEET NO. 28096
---	---------------------------

1650 Lundy Park Court
 Louisville, KY 40227
 (502) 496-4000
 WWW.MBI.COM

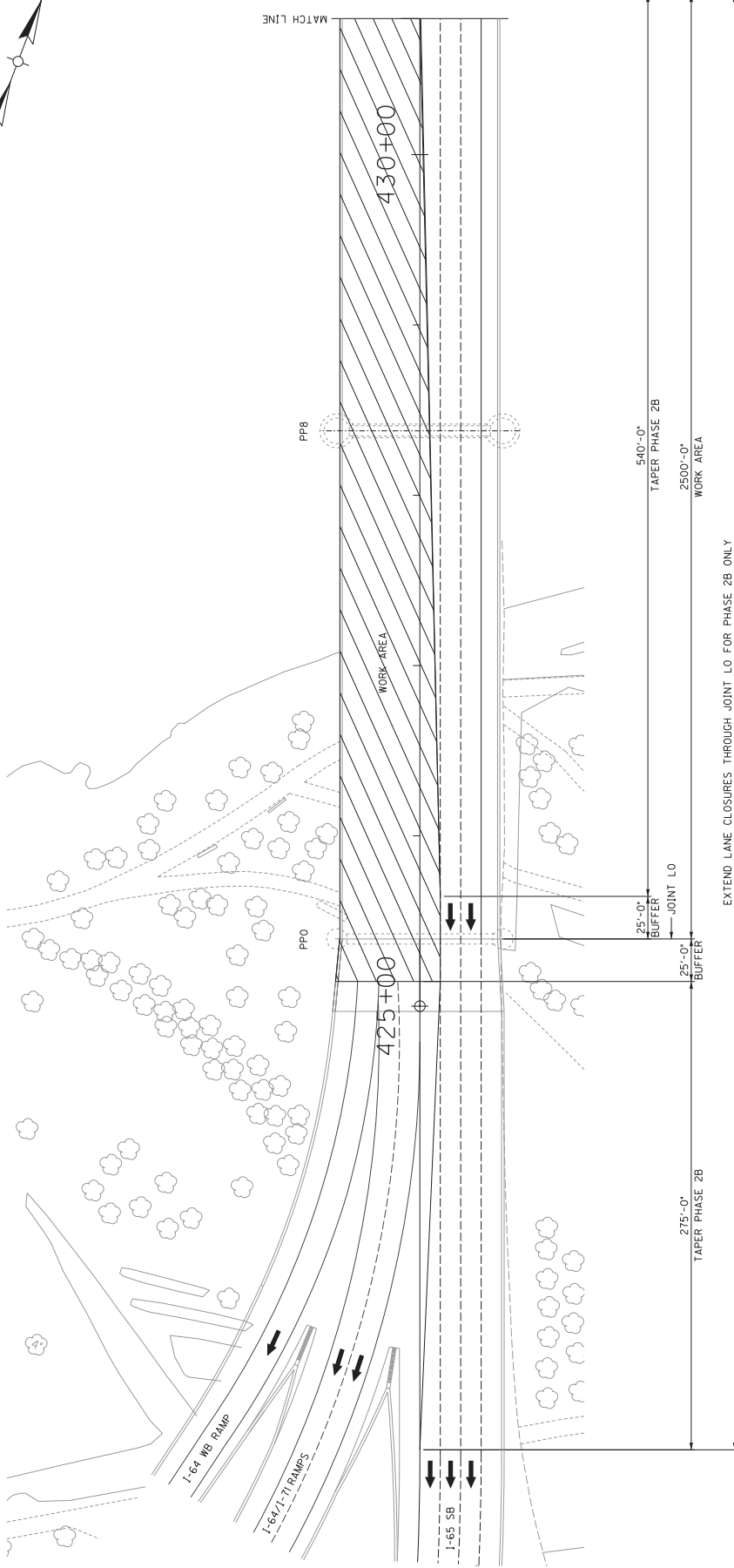
ITEM NUMBER



PHASE 1 PLAN

DATE: JULY 2019	REVISION	CHECKED BY	DATE
DESIGNED BY: MJB		DTK	
DETAILED BY: MJD		DTK	
Commonwealth of Kentucky DEPARTMENT OF HIGHWAYS			
COUNTY JEFFERSON			
ROUTE I-65	CROSSING OHIO RIVER	SHEET NO. MAINTENANCE OF TRAFFIC - 7	
PREPARED BY Michael Baker INTERNATIONAL			
1650 Jordan Farm Court Louisville, KY 40227 (502) 261-4000 WWW.MBI.COM			
CONTRACT NO. 280096			

ITEM NUMBER



PHASE 2 PLAN

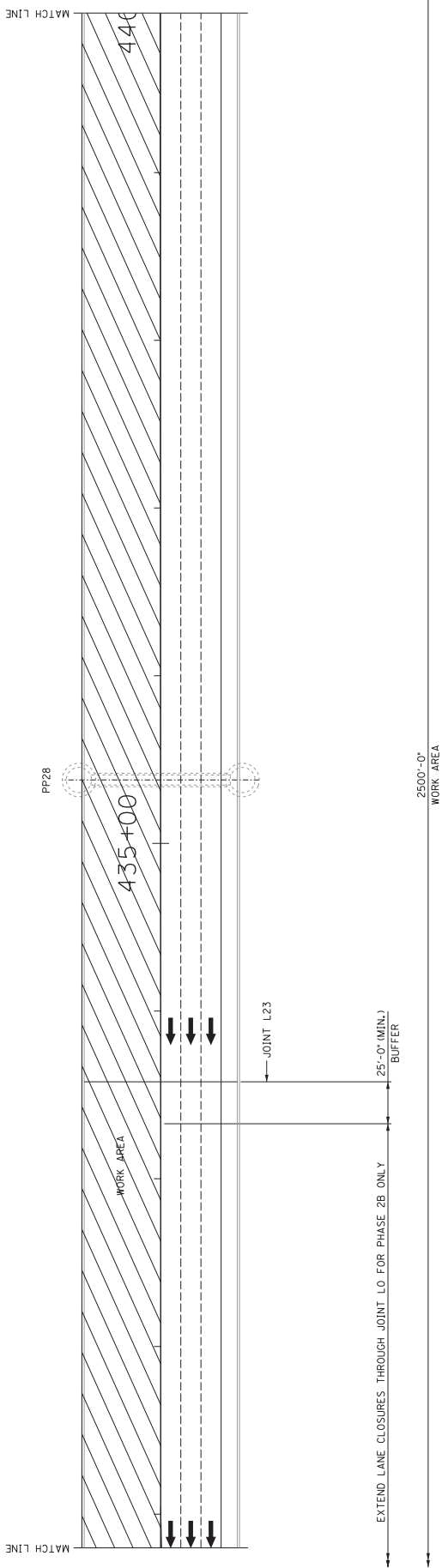
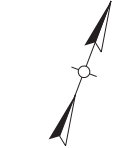
NOTES

RAMPS FOR I-64 WB AND I-64/I-75 ARE ONLY PERMITTED TO BE CLOSED DURING PHASE 2B WORK.

DATE: JULY 2019	REVISION	CHECKED BY
DESIGNED BY: MJB		DTK
DETAILED BY: MJB		DTK
Commonwealth of Kentucky DEPARTMENT OF HIGHWAYS		
COUNTY JEFFERSON		
ROUTE I-65	CROSSING OHIO RIVER	
MAINTENANCE OF TRAFFIC - 9		
PREPARED BY Michael Baker	SHEET NO. S24	28096
<small>1650 Jordan Farm Court Cincinnati, OH 45237 WWW.MBI.COM</small>		

ITEM NUMBER

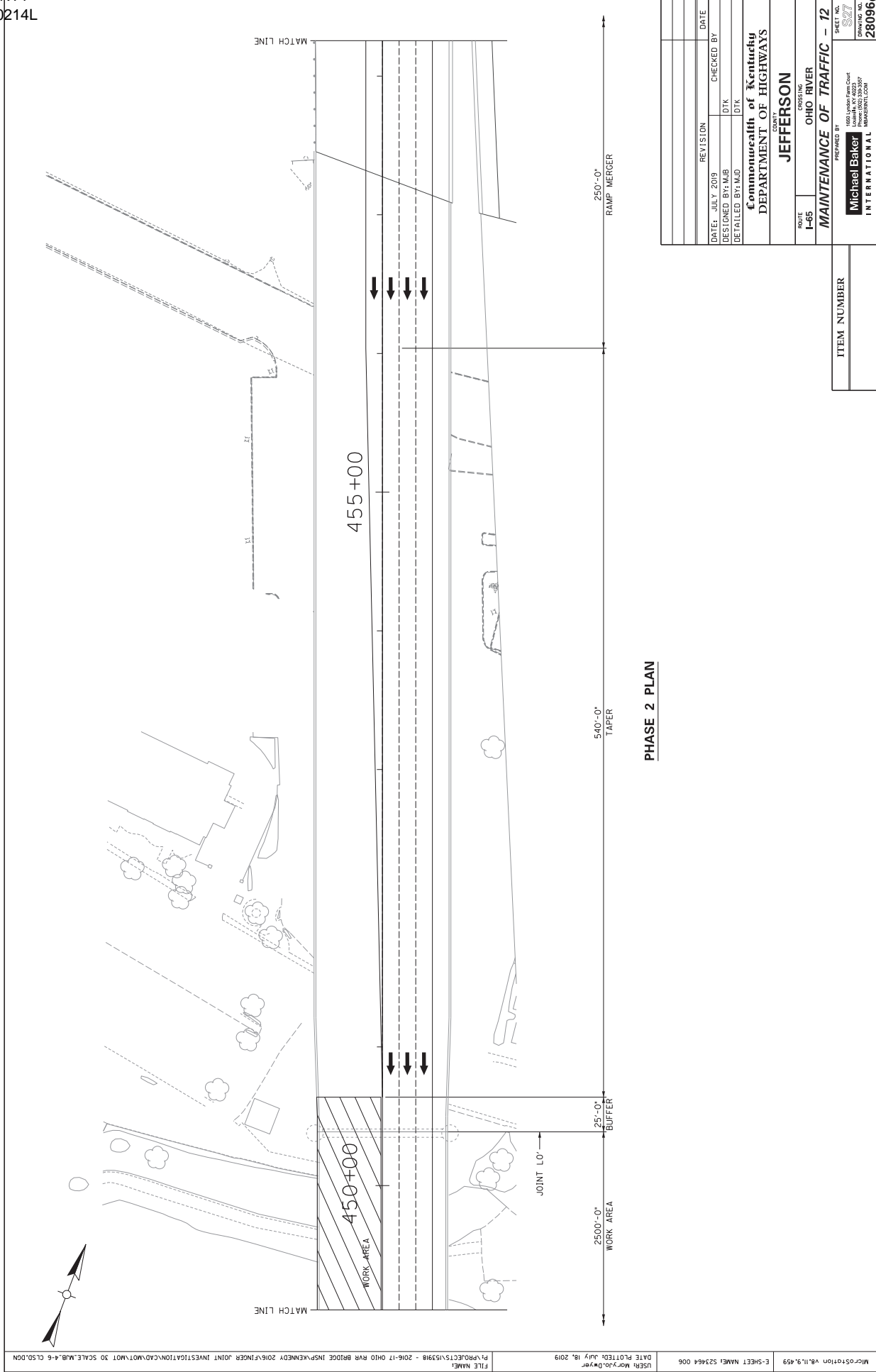
USER: Moryo.Dwyer DATE PLOTTED: JULY 18, 2019 FILE NAME: P:\PROJECTS\151918 - 2016-17 OHIO RVR BRIDGE INSPECTION\2016\FINER JOINT INVESTIGATION\CA0\M07\M07 30 SCALE.MB, 4-6 CLSD.DGN



PHASE 2 PLAN

DATE: JULY 2019	REVISION	CHECKED BY
DESIGNED BY: MJB		DTK
DETAILED BY: MJB		DTK
Commonwealth of Kentucky DEPARTMENT OF HIGHWAYS <small>COUNTY</small> JEFFERSON		
ROUTE I-65	CROSSING OHIO RIVER	
MAINTENANCE OF TRAFFIC - 10 PREPARED BY:		
		SHEET NO. 325 CONTRACT NO. 28096

ITEM NUMBER

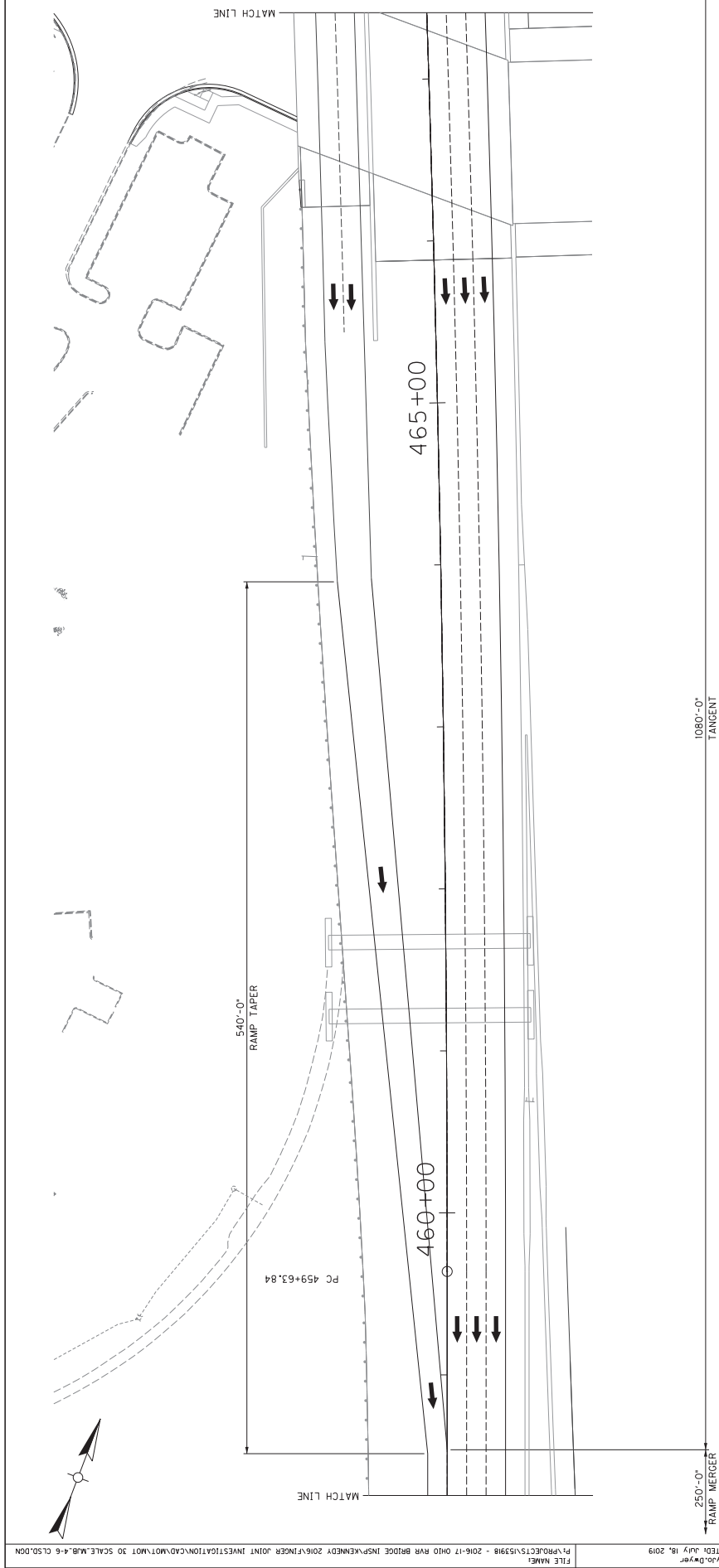


PHASE 2 PLAN

REVISION	DATE	CHECKED BY
DESIGNED BY: MJB	JULY 2019	
DTK		
DTK		

COUNTY: **JEFFERSON**
 CROSSING: **OHIO RIVER**
 ROUTE: **I-65**
MAINTENANCE OF TRAFFIC - 12
 PREPARED BY: **Michael Baker INTERNATIONAL**
 SHEET NO.: **S27**
 CONTRACT NO.: **28096**

ITEM NUMBER



PHASE 2 PLAN

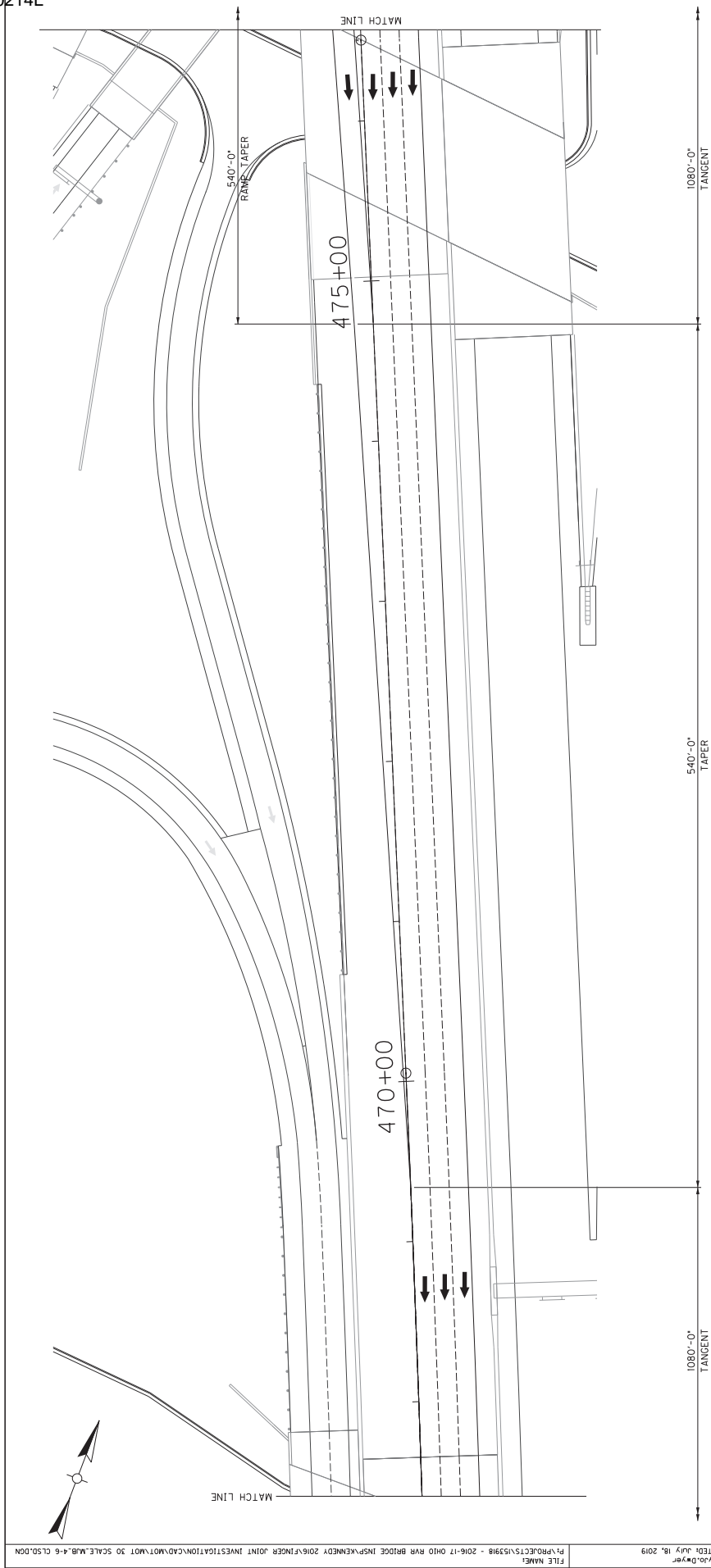
REVISION	DATE	CHECKED BY
DATE: JULY 2019		
DESIGNED BY: MJB		DTK
DETAILED BY: MJB		DTK

Commonwealth of Kentucky
DEPARTMENT OF HIGHWAYS
 COUNTY: **JEFFERSON**
 ROUTE: **I-65** CROSSING: **OHIO RIVER**
MAINTENANCE OF TRAFFIC - 13
 PREPARED BY:

SHEET NO. **28096**

 Michael Baker International
 1650 Lyndon Park Court
 Louisville, KY 40227
 (502) 261-7000
 WWW.MBI.COM

ITEM NUMBER



PHASE 2 PLAN

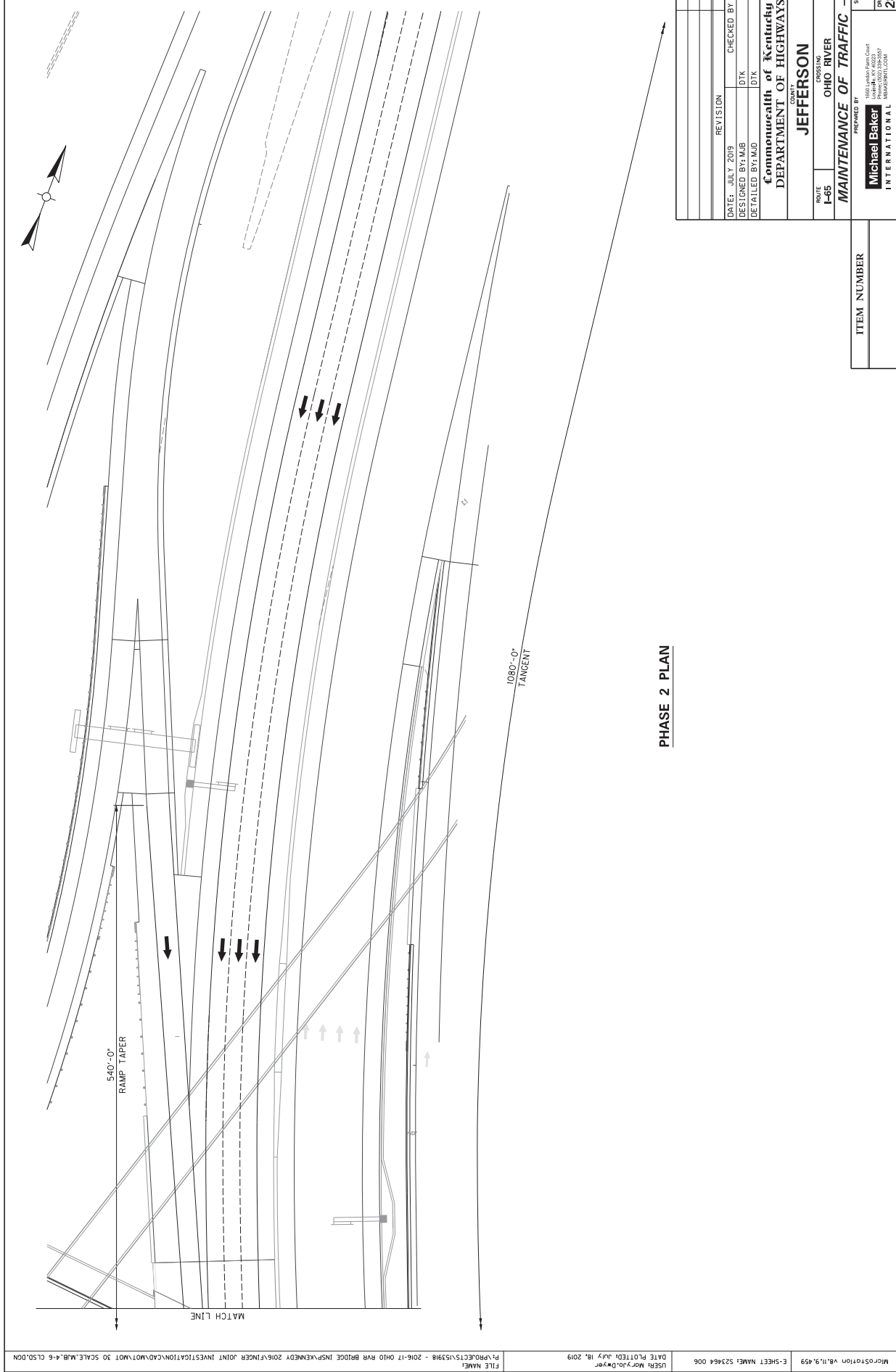
REVISION	DATE	CHECKED BY

DATE: JULY 2019
 DESIGNED BY: MJB
 DTK
 DETAILED BY: MJB
 DTK

Commonwealth of Kentucky
DEPARTMENT OF HIGHWAYS
 COUNTY: **JEFFERSON**
 CROSSING: **OHIO RIVER**
 ROUTE: **I-65**
MAINTENANCE OF TRAFFIC - 14
 PREPARED BY: **Michael Baker INTERNATIONAL**

SHEET NO. **28096**
 PROJECT NO. **1651 Under Pass Cont. I-65/US 42/202**
 DRAWING NO. **42027**
 DATE: **7/18/2019**
 DRAWN BY: **MB**

ITEM NUMBER	
-------------	--



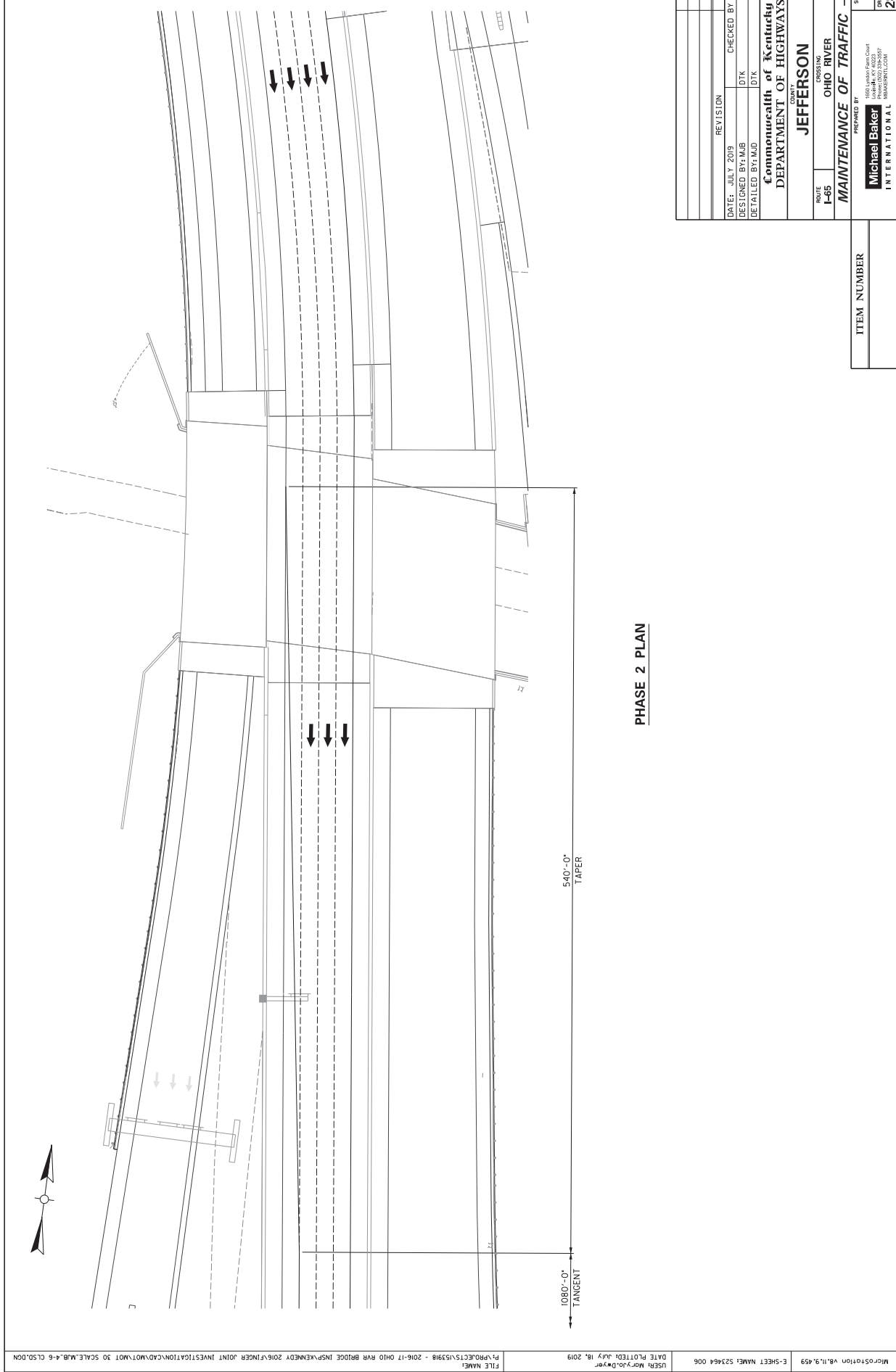
PHASE 2 PLAN

REVISION	DATE	CHECKED BY
DESIGNED BY: MJB	JULY 2019	
DETAILED BY: MJB		

COUNTY: **JEFFERSON**
 CROSSING: **OHIO RIVER**
 ROUTE: **I-65**
MAINTENANCE OF TRAFFIC - 15
 SHEET NO.: **S30**
 CONTRACT NO.: **28096**

PREPARED BY: **Michael Baker INTERNATIONAL**
1650 Jordan Farm Court
 Warrenton, OR 97146
 503.867.4600
 MBI@MBINTERNATIONAL.COM

ITEM NUMBER



PHASE 2 PLAN

REVISION	DATE	CHECKED BY
DATE: JULY 2019		
DESIGNED BY: MJB		DTK
DETAILED BY: MJB		DTK

Commonwealth of Kentucky
DEPARTMENT OF HIGHWAYS
 COUNTY: **JEFFERSON**
 ROUTE: **I-65** CROSSING: **OHIO RIVER**
MAINTENANCE OF TRAFFIC - 16
 PREPARED BY: **Michael Baker INTERNATIONAL**
 SHEET NO.: **280996**
1650 Jordan Farm Court
 Lexington, KY 40502
 (606) 256-8600
 www.mbakintl.com

ITEM NUMBER

PART II
SPECIFICATIONS AND STANDARD DRAWINGS

SPECIFICATIONS REFERENCE

Any reference in the plans or proposal to previous editions of the *Standard Specifications for Road and Bridge Construction* and *Standard Drawings* are superseded by *Standard Specifications for Road and Bridge Construction, Edition of 2019* and *Standard Drawings, Edition of 2016*.

SUPPLEMENTAL SPECIFICATIONS

The contractor shall use the Supplemental Specifications that are effective at the time of letting.
The Supplemental Specifications can be found at the following link:

<http://transportation.ky.gov/Construction/Pages/Kentucky-Standard-Specifications.aspx>

PART III

EMPLOYMENT, WAGE AND RECORD REQUIREMENTS

**TRANSPORTATION CABINET
DEPARTMENT OF HIGHWAYS**

**LABOR AND WAGE REQUIREMENTS
APPLICABLE TO OTHER THAN FEDERAL-AID SYSTEM PROJECTS**

- I. Application
- II. Nondiscrimination of Employees (KRS 344)

I. APPLICATION

1. These contract provisions shall apply to all work performed on the contract by the contractor with his own organization and with the assistance of workmen under his immediate superintendence and to all work performed on the contract by piecework, station work or by subcontract. The contractor's organization shall be construed to include only workmen employed and paid directly by the contractor and equipment owned or rented by him, with or without operators.

2. The contractor shall insert in each of his subcontracts all of the stipulations contained in these Required Provisions and such other stipulations as may be required.

3. A breach of any of the stipulations contained in these Required Provisions may be grounds for termination of the contract.

3. If the contractor is in control of apprenticeship or other training or retraining, including on-the-job training programs, he shall not discriminate against an individual because of his race, color, religion, national origin, sex, disability or age forty (40) and over, in admission to, or employment in any program established to provide apprenticeship or other training.

4. The contractor will send to each labor union or representative of workers with which he has a collective bargaining agreement or other contract or understanding, a notice to be provided advising the said labor union or workers' representative of the contractor's commitments under this section, and shall post copies of the notice in conspicuous places available to employees and applicants for employment. The contractor will take such action with respect to any subcontract or purchase order as the administering agency may direct as a means of enforcing such provisions, including sanctions for non-compliance.

Revised: January 25, 2017

II. NONDISCRIMINATION OF EMPLOYEES

**AN ACT OF THE KENTUCKY
GENERAL ASSEMBLY TO PREVENT
DISCRIMINATION IN EMPLOYMENT
KRS CHAPTER 344
EFFECTIVE JUNE 16, 1972**

The contract on this project, in accordance with KRS Chapter 344, provides that during the performance of this contract, the contractor agrees as follows:

1. The contractor shall not fail or refuse to hire, or shall not discharge any individual, or otherwise discriminate against an individual with respect to his compensation, terms, conditions, or privileges of employment, because of such individual's race, color, religion, national origin, sex, disability or age (forty and above); or limit, segregate, or classify his employees in any way which would deprive or tend to deprive an individual of employment opportunities or otherwise adversely affect his status as an employee, because of such individual's race, color, religion, national origin, sex, disability or age forty (40) and over. The contractor agrees to post in conspicuous places, available to employees and applicants for employment, notices to be provided setting forth the provisions of this nondiscrimination clause.

2. The contractor shall not print or publish or cause to be printed or published a notice or advertisement relating to employment by such an employer or membership in or any classification or referral for employment by the employment agency, indicating any preference, limitation, specification, or discrimination, based on race, color, religion, national origin, sex, or age forty (40) and over, or because the person is a qualified individual with a disability, except that such a notice or advertisement may indicate a preference, limitation, or specification based on religion, national origin, sex, or age forty (40) and over, or because the person is a qualified individual with a disability, when religion, national origin, sex, or age forty (40) and over, or because the person is a qualified individual with a disability, is a bona fide occupational qualification for employment.

EXECUTIVE BRANCH CODE OF ETHICS

In the 1992 regular legislative session, the General Assembly passed and Governor Brereton Jones signed Senate Bill 63 (codified as KRS 11A), the Executive Branch Code of Ethics, which states, in part:

KRS 11A.040 (7) provides:

No present or former public servant shall, within six (6) months following termination of his office or employment, accept employment, compensation, or other economic benefit from any person or business that contracts or does business with, or is regulated by, the state in matters in which he was directly involved during the last thirty-six (36) months of his tenure. This provision shall not prohibit an individual from returning to the same business, firm, occupation, or profession in which he was involved prior to taking office or beginning his term of employment, or for which he received, prior to his state employment, a professional degree or license, provided that, for a period of six (6) months, he personally refrains from working on any matter in which he was directly involved during the last thirty-six (36) months of his tenure in state government. This subsection shall not prohibit the performance of ministerial functions, including but not limited to filing tax returns, filing applications for permits or licenses, or filing incorporation papers, nor shall it prohibit the former officer or public servant from receiving public funds disbursed through entitlement programs.

KRS 11A.040 (9) states:

A former public servant shall not represent a person or business before a state agency in a matter in which the former public servant was directly involved during the last thirty-six (36) months of his tenure, for a period of one (1) year after the latter of:

- a) The date of leaving office or termination of employment; or
- b) The date the term of office expires to which the public servant was elected.

This law is intended to promote public confidence in the integrity of state government and to declare as public policy the idea that state employees should view their work as a public trust and not as a way to obtain private benefits.

If you have worked for the executive branch of state government within the past six months, you may be subject to the law's prohibitions. The law's applicability may be different if you hold elected office or are contemplating representation of another before a state agency.

Also, if you are affiliated with a firm which does business with the state and which employs former state executive-branch employees, you should be aware that the law may apply to them.

In case of doubt, the law permits you to request an advisory opinion from the Executive Branch Ethics Commission, 3 Fountain Place, Frankfort, Kentucky 40601; telephone (502) 564-7954.

Revised: January 27, 2017

Kentucky Equal Employment Opportunity Act of 1978

The requirements of the Kentucky Equal Employment Opportunity Act of 1978 (KRS 45.560-45.640) shall apply to this Contract. The apparent low Bidder will be required to submit EEO forms to the Division of Construction Procurement, which will then forward to the Finance and Administration Cabinet for review and approval. No award will become effective until all forms are submitted and EEO/CC has certified compliance. The required EEO forms are as follows:

- EEO-1: Employer Information Report
- Affidavit of Intent to Comply
- Employee Data Sheet
- Subcontractor Report

These forms are available on the Finance and Administration's web page under ***Vendor Information, Standard Attachments and General Terms*** at the following address:
<https://www.eProcurement.ky.gov>.

Bidders currently certified as being in compliance by the Finance and Administration Cabinet may submit a copy of their approval letter in lieu of the referenced EEO forms.

For questions or assistance please contact the Finance and Administration Cabinet by email at **finance.contractcompliance@ky.gov** or by phone at 502-564-2874.

EMPLOYEE RIGHTS UNDER THE FAIR LABOR STANDARDS ACT

THE UNITED STATES DEPARTMENT OF LABOR WAGE AND HOUR DIVISION

FEDERAL MINIMUM WAGE

\$7.25

 PER HOUR

BEGINNING JULY 24, 2009

OVERTIME PAY At least 1½ times your regular rate of pay for all hours worked over 40 in a workweek.

CHILD LABOR An employee must be at least **16** years old to work in most non-farm jobs and at least **18** to work in non-farm jobs declared hazardous by the Secretary of Labor.

Youths **14** and **15** years old may work outside school hours in various non-manufacturing, non-mining, non-hazardous jobs under the following conditions:

No more than

- **3** hours on a school day or **18** hours in a school week;
- **8** hours on a non-school day or **40** hours in a non-school week.

Also, work may not begin before **7 a.m.** or end after **7 p.m.**, except from June 1 through Labor Day, when evening hours are extended to **9 p.m.** Different rules apply in agricultural employment.

TIP CREDIT Employers of “tipped employees” must pay a cash wage of at least \$2.13 per hour if they claim a tip credit against their minimum wage obligation. If an employee’s tips combined with the employer’s cash wage of at least \$2.13 per hour do not equal the minimum hourly wage, the employer must make up the difference. Certain other conditions must also be met.

ENFORCEMENT The Department of Labor may recover back wages either administratively or through court action, for the employees that have been underpaid in violation of the law. Violations may result in civil or criminal action.

Employers may be assessed civil money penalties of up to \$1,100 for each willful or repeated violation of the minimum wage or overtime pay provisions of the law and up to \$11,000 for each employee who is the subject of a violation of the Act’s child labor provisions. In addition, a civil money penalty of up to \$50,000 may be assessed for each child labor violation that causes the death or serious injury of any minor employee, and such assessments may be doubled, up to \$100,000, when the violations are determined to be willful or repeated. The law also prohibits discriminating against or discharging workers who file a complaint or participate in any proceeding under the Act.

ADDITIONAL INFORMATION

- Certain occupations and establishments are exempt from the minimum wage and/or overtime pay provisions.
- Special provisions apply to workers in American Samoa and the Commonwealth of the Northern Mariana Islands.
- Some state laws provide greater employee protections; employers must comply with both.
- The law requires employers to display this poster where employees can readily see it.
- Employees under 20 years of age may be paid \$4.25 per hour during their first 90 consecutive calendar days of employment with an employer.
- Certain full-time students, student learners, apprentices, and workers with disabilities may be paid less than the minimum wage under special certificates issued by the Department of Labor.

For additional information:



1-866-4-USWAGE

(1-866-487-9243)

TTY: 1-877-889-5627



WWW.WAGEHOUR.DOL.GOV

PROPOSAL BID ITEMS

192607

Page 1 of 1

Report Date 7/26/19

Section: 0001 - BRIDGE

LINE	BID CODE	ALT	DESCRIPTION	QUANTITY	UNIT	UNIT PRIC	FP	AMOUNT
0010	02650		MAINTAIN & CONTROL TRAFFIC	1.00	LS		\$	
0020	21529ND		FINGER DAM REPAIR APPLIES TO JOINT L0'	1.00	LS		\$	
0030	21529ND		FINGER DAM REPAIR JOINT L0	1.00	LS		\$	
0040	21529ND		FINGER DAM REPAIR JOINT L23	1.00	LS		\$	
0050	21529ND		FINGER DAM REPAIR JOINT L23' (PHASE 2)	1.00	LS		\$	
0060	24430EC		REM AND REPLACE FINGER EXPANSION JOINT JOINT L23' (PHASE 1)	1.00	EACH		\$	

Section: 0002 - DEMOBILIZATION

LINE	BID CODE	ALT	DESCRIPTION	QUANTITY	UNIT	UNIT PRIC	FP	AMOUNT
0070	02568		MOBILIZATION	1.00	LS		\$	
0080	02569		DEMOBILIZATION	1.00	LS		\$	