



CALL NO. 303

CONTRACT ID. 171254

FRANKLIN COUNTY

FED/STATE PROJECT NUMBER FD04 SPP 037 0060 009-011

DESCRIPTION EAST MAIN STREET (US 60)

WORK TYPE GRADE & DRAIN WITH ASPHALT SURFACE

PRIMARY COMPLETION DATE 9/15/2018

LETTING DATE: December 08,2017

Sealed Bids will be received electronically through the Bid Express bidding service until 10:00 AM EASTERN STANDARD TIME December 08,2017. Bids will be publicly announced at 10:00 AM EASTERN STANDARD TIME.

PLANS AVAILABLE FOR THIS PROJECT.

REQUIRED BID PROPOSAL GUARANTY: Not less than 5% of the total bid.

TABLE OF CONTENTS

PART I	SCOPE OF WORK
	<ul style="list-style-type: none">• PROJECT(S), COMPLETION DATE(S), & LIQUIDATED DAMAGES• CONTRACT NOTES• STATE CONTRACT NOTES• SIGNIFICANT PROJECT -PROJECT TRAFFIC COORDINATOR• ASPHALT MIXTURE• INCIDENTAL SURFACING• COMPACTION OPTION A• LIQUIDATED DAMAGES• PIPELINE INSPECTION• TRAFFIC CONTROL PLAN• RIGHT OF WAY NOTES• UTILITY IMPACT & RAIL CERTIFICATION NOTES• KPDES STORM WATER PERMIT, BMP AND APPROVAL LETTER
PART II	SPECIFICATIONS AND STANDARD DRAWINGS
	<ul style="list-style-type: none">• SPECIFICATIONS REFERENCE• SUPPLEMENTAL SPECIFICATION• [SN-1I] PORTABLE CHANGEABLE SIGNS• [SN-11M] BARCODE LABEL ON PERMANENT SIGNS
PART III	EMPLOYMENT, WAGE AND RECORD REQUIREMENTS
	<ul style="list-style-type: none">• LABOR AND WAGE REQUIREMENTS• EXECUTIVE BRANCH CODE OF ETHICS• KENTUCKY EQUAL EMPLOYMENT OPPORTUNITY ACT OF 1978 LOCALITY / STATE• PROJECT WAGE RATES / STATE
PART IV	INSURANCE
PART V	BID ITEMS

PART I
SCOPE OF WORK

ADMINISTRATIVE DISTRICT - 05

CONTRACT ID - 171254

FD04 SPP 037 0060 009-011

COUNTY - FRANKLIN

PCN - DE037006017W1

FD04 SPP 037 0060 009-011

EAST MAIN STREET (US 60) (MP 9.338) ENHANCEMENT OF US 60 (EAST MAIN STREET) FROM MARTIN LUTHER KING BOULEVARD TO SCHENKEL LANE IN FRANKFORT (MP 10.148), A DISTANCE OF 0.81 MILES.GRADE & DRAIN WITH ASPHALT SURFACE SYP NO. 05-00600.00.

GEOGRAPHIC COORDINATES LATITUDE 38:12:04.00 LONGITUDE 84:51:11.00

COMPLETION DATE(S):

COMPLETED BY 09/15/2018

APPLIES TO ENTIRE CONTRACT

INTERMEDIATE MILESTONE - ALL

DRAINAGE & ROADWAY

COMPLETED BY 08/06/2018

COMPLETED

CONTRACT NOTES

PROPOSAL ADDENDA

All addenda to this proposal must be applied when calculating bid and certified in the bid packet submitted to the Kentucky Department of Highways. Failure to use the correct and most recent addenda may result in the bid being rejected.

BID SUBMITTAL

Bidder must use the Department's Expedite Bidding Program available on the Internet web site of the Department of Highways, Division of Construction Procurement. (www.transportation.ky.gov/construction-procurement)

The Bidder must download the bid file located on the Bid Express website (www.bidx.com) to prepare a bid packet for submission to the Department. The bidder must submit electronically using Bid Express.

JOINT VENTURE BIDDING

Joint venture bidding is permissible. All companies in the joint venture must be prequalified in one of the work types in the Qualifications for Bidders for the project. The bidders must get a vendor ID for the joint venture from the Division of Construction Procurement and register the joint venture as a bidder on the project. Also, the joint venture must obtain a digital ID from Bid Express to submit a bid. A joint bid bond of 5% may be submitted for both companies or each company may submit a separate bond of 5%.

UNDERGROUND FACILITY DAMAGE PROTECTION

The contractor shall make every effort to protect underground facilities from damage as prescribed in the Underground Facility Damage Protection Act of 1994, Kentucky Revised Statute KRS 367.4901 to 367.4917. It is the contractor's responsibility to determine and take steps necessary to be in compliance with federal and state damage prevention directives. When prescribed in said directives, the contractor shall submit Excavation Locate Requests to the Kentucky Contact Center (KY811) via web ticket entry. The submission of this request does not relieve the contractor from the responsibility of contacting non-member facility owners, whom shall be contacted through their individual Protection Notification Center. Non-compliance with these directives can result in the enforcement of penalties.

SPECIAL NOTE FOR COMPOSITE OFFSET BLOCKS

Contrary to the Standard Drawings (2016 edition) the Cabinet will allow 6" composite offset blocks in lieu of wooden offset blocks, except as specified on proprietary end treatments and crash cushions. The composite blocks shall be selected from the Cabinet's List of Approved Materials.

REGISTRATION WITH THE SECRETARY OF STATE BY A FOREIGN ENTITY

Pursuant to KRS 176.085(1)(b), an agency, department, office, or political subdivision of the Commonwealth of Kentucky shall not award a state contract to a person that is a foreign entity required by [KRS 14A.9-010](#) to obtain a certificate of authority to transact business in the Commonwealth (“certificate”) from the Secretary of State under [KRS 14A.9-030](#) unless the person produces the certificate within fourteen (14) days of the bid or proposal opening. If the foreign entity is not required to obtain a certificate as provided in [KRS 14A.9-010](#), the foreign entity should identify the applicable exception. Foreign entity is defined within [KRS 14A.1-070](#).

For all foreign entities required to obtain a certificate of authority to transact business in the Commonwealth, if a copy of the certificate is not received by the contracting agency within the time frame identified above, the foreign entity’s solicitation response shall be deemed non-responsive or the awarded contract shall be cancelled.

Businesses can register with the Secretary of State at <https://secure.kentucky.gov/sos/ftbr/welcome.aspx>.

SPECIAL NOTE FOR PROJECT QUESTIONS DURING ADVERTISEMENT

Questions about projects during the advertisement should be submitted in writing to the Division of Construction Procurement. This may be done by fax (502) 564-7299 or email to kytc.projectquestions@ky.gov. The Department will attempt to answer all submitted questions. The Department reserves the right not to answer if the question is not pertinent or does not aid in clarifying the project intent.

The deadline for posting answers will be 3:00 pm Eastern Daylight Time, the day preceding the Letting. Questions may be submitted until this deadline with the understanding that the later a question is submitted, the less likely an answer will be able to be provided.

The questions and answers will be posted for each Letting under the heading “Questions & Answers” on the Construction Procurement website (www.transportation.ky.gov/contract). The answers provided shall be considered part of this Special Note and, in case of a discrepancy, will govern over all other bidding documents.

HARDWOOD REMOVAL RESTRICTIONS

The US Department of Agriculture has imposed a quarantine in Kentucky and several surrounding states, to prevent the spread of an invasive insect, the emerald ash borer. Hardwood cut in conjunction with the project may not be removed from the state. Chipping or burning on site is the preferred method of disposal.

INSTRUCTIONS FOR EXCESS MATERIAL SITES AND BORROW SITES

Identification of excess material sites and borrow sites shall be the responsibility of the Contractor. The Contractor shall be responsible for compliance with all applicable state and federal laws and may wish to consult with the US Fish and Wildlife Service to seek protection under Section 10 of the Endangered Species Act for these activities.

ACCESS TO RECORDS

The contractor, as defined in KRS 45A.030 (9) agrees that the contracting agency, the Finance and Administration Cabinet, the Auditor of Public Accounts, and the Legislative Research Commission, or their duly authorized representatives, shall have access to any books, documents, papers, records, or other evidence, which are directly pertinent to this contract for the purpose of financial audit or program review. Records and other prequalification information confidentially disclosed as part of the bid process shall not be deemed as directly pertinent to the contract and shall be exempt from disclosure as provided in KRS 61.878(1)(c). The contractor also recognizes that any books, documents, papers, records, or other evidence, received during a financial audit or program review shall be subject to the Kentucky Open Records Act, KRS 61.870 to 61.884.

In the event of a dispute between the contractor and the contracting agency, Attorney General, or the Auditor of Public Accounts over documents that are eligible for production and review, the Finance and Administration Cabinet shall review the dispute and issue a determination, in accordance with Secretary's Order 11-004.

06/01/16

SPECIAL NOTE FOR RECIPROCAL PREFERENCE

Reciprocal preference to be given by public agencies to resident bidders

By reference, KRS 45A.490 to 45A.494 are incorporated herein and in compliance regarding the bidders residency. Bidders who want to claim resident bidder status should complete the Affidavit for Claiming Resident Bidder Status along with their bid in the Expedite Bidding Program. Submittal of the Affidavit should be done along with the bid in Bid Express.

03/01/2011

PROJECT TRAFFIC COORDINATOR (PTC)

Be advised this project is a significant project pursuant to section 112.03.12.

ASPHALT MIXTURE

Unless otherwise noted, the Department estimates the rate of application for all asphalt mixtures to be 110 lbs/sy per inch of depth.

INCIDENTAL SURFACING

The Department has included in the quantities of asphalt mixtures established in the proposal estimated quantities required for resurfacing or surfacing mailbox turnouts, farm field entrances, residential and commercial entrances, curve widening, ramp gores and tapers, and road and street approaches, as applicable. Pave these areas to the limits as shown on Standard Drawing RPM-110-06 or as directed by the Engineer. In the event signal detectors are present in the intersecting streets or roads, pave the crossroads to the right of way limit or back of the signal detector, whichever is the farthest back of the mainline. Surface or resurface these areas as directed by the Engineer. The Department will not measure placing and compacting for separate payment but shall be incidental to the Contract unit price for the asphalt mixtures.

OPTION A

Be advised that the Department will accept compaction of asphalt mixtures furnished for driving lanes and ramps, at 1 inch (25mm) or greater, on this project according to OPTION A in accordance with Section 402 and Section 403 of the current Standard Specifications. The Department will require joint cores as described in Section 402.03.02 for surface mixtures only. The Department will accept compaction of all other asphalt mixtures according to OPTION B.

SPECIAL NOTE FOR LIQUIDATED DAMAGES

FD04 SPP 0060 037 009-011

ITEM NUMBER: 5-600.00

This project has a substantial completion date of August 6, 2018. Substantial completion is defined as all drainage and roadway work, except for final surfacing and striping. If substantial Completion is not reached within this time period the Department will assess liquidated damages at the following rate for each calendar day beyond August 6, 2018 until it is determined by the Engineer that the roadway and sidewalks can be safely opened to traffic:

\$4,000 per day

This project has a specified completion date of September 15, 2018. In accordance with KYTC Std. Spec. Section 108.09 the Department will assess liquidated damages for each calendar day after the specified completion date until the project is determined to be complete by the Engineer.

SPECIAL NOTE FOR PIPELINE INSPECTION

1.0 DESCRIPTION. The Department will perform visual inspections on all pipe on the project. A video inspection will be required on projects having more than 250 linear feet of storm sewer and/or culvert pipe and on routes with an ADT of greater than 1,000 vehicles. Conduct video inspections on all pipe located under the roadway and 50 percent of the remaining pipe not under the roadway. Storm sewer runs and outfall pipes not under the roadway take precedence over rural entrance pipes. Contractors performing this item of work must be prequalified with the Department in the work type J51 (Video Pipe Inspection and Cleaning). Deflection testing shall be completed using a mandrel in accordance with the procedure outlined below or by physical measurement for pipes greater than 36 inches in diameter. Mandrel testing for deflection must be completed prior to the video inspection testing. Unless otherwise noted, Section references herein are to the Department's 2012 Standard Specifications for Road and Bridge Construction.

2.0 VIDEO INSPECTION. Ensure pipe is clear of water, debris or obstructions. Complete the video inspection and any necessary measurement prior to placing the final surface over any pipe. When paving will not be delayed, take measurements 30 days or more after the completion of earthwork to within 1 foot of the finished subgrade. Notify the Engineer a minimum of 24 hours in advance of inspection and notify the Engineer immediately if distresses or locations of improper installation are logged.

2.1 INSPECTION FOR DEFECTS AND DISTRESSES

A) Begin at the outlet end and proceed through to the inlet at a speed less than or equal to 30 ft/minute. Remove blockages that will prohibit a continuous operation.

B) Document locations of all observed defects and distresses including but not limited to: cracking, spalling, slabbing, exposed reinforcing steel, sags, joint offsets, joint separations, deflections, improper joints/connections, blockages, leaks, rips, tears, buckling, deviation from line and grade, damaged coatings/paved inverts, and other anomalies not consistent with a properly installed pipe.

C) During the video inspection provide a continuous 360 degree pan of every pipe joint.

D) Identify and measure all cracks greater than 0.1" and joint separations greater than 0.5".

E) Video Inspections are conducted from junction to junction which defines a pipe run. A junction is defined as a headwall, drop box inlet, curb box inlet, manhole, buried junction, or other structure that disturbs the continuity of the pipe. Multiple pipe inspections may be conducted from a single set up location, but each pipe run must be on a separate video file and all locations are to be referenced from nearest junction relative to that pipe run.

F) Record and submit all data on the TC 64-765 and TC 64-766 forms.

3.0 MANDREL TESTING. Mandrel testing will be used for deflection testing. For use on Corrugated Metal Pipe, High Density Polyethylene Pipe, and Polyvinyl Chloride Pipe,

use a mandrel device with an odd number of legs (9 minimum) having a length not less than the outside diameter of the mandrel. The diameter of the mandrel at any point shall not be less than the diameter specified in Section 3.6. Mandrels can be a fixed size or a variable size.

3.1 Use a proving ring or other method recommended by the mandrel manufacturer to verify mandrel diameter prior to inspection. Provide verification documentation for each size mandrel to the Engineer.

3.2 All deflection measurements are to be based off of the AASHTO Nominal Diameters. Refer to the chart in section 3.6.

3.3 Begin by using a mandrel set to the 5.0% deflection limit. Place the mandrel in the inlet end of the pipe and pull through to the outlet end. If resistance is met prior to completing the entire run, record the maximum distance achieved from the inlet side, then remove the mandrel and continue the inspection from the outlet end of the pipe toward the inlet end. Record the maximum distance achieved from the outlet side.

3.4 If no resistance is met at 5.0% then the inspection is complete. If resistance occurred at 5.0% then repeat 3.1 and 3.2 with the mandrel set to the 10.0% deflection limit. If the deflection of entire pipe run cannot be verified with the mandrel then immediately notify the Engineer.

3.5 Care must be taken when using a mandrel in all pipe material types and lining/coating scenarios. Pipe damaged during the mandrel inspection will be video inspected to determine the extent of the damage. If the damaged pipe was video inspected prior to mandrel inspection then a new video inspection is warranted and supersedes the first video inspection. Immediately notify the Engineer of any damages incurred during the mandrel inspection and submit a revised video inspection report.

3.6 AASHTO Nominal Diameters and Maximum Deflection Limits.

Base Pipe Diameter (inches)	AASHTO Nominal Diameter (inches)	Max. Deflection Limit (inches)	
		5.0%	10.0%
15	14.76	14.02	13.28
18	17.72	16.83	15.95
24	23.62	22.44	21.26
30	29.53	28.05	26.58
36	35.43	33.66	31.89
42	41.34	39.27	37.21
48	47.24	44.88	42.52
54	53.15	50.49	47.84
60	59.06	56.11	53.15

4.0 PHYSICAL MEASUREMENT OF PIPE DEFLECTION. Alternate method for deflection testing when there is available access or the pipe is greater than 36 inches in diameter, as per 4.1. Use a contact or non-contact distance instrument. A leveling device is recommended for establishing or verifying vertical and horizontal control.

4.1 Physical measurements may be taken after installation and compared to the AASHTO Nominal Diameter of the pipe as per Section 3.6. When this method is used, determine the smallest interior diameter of the pipe as measured through the center point of the pipe (D2). All measurements are to be taken from the inside crest of the corrugation. Take the D2 measurements at the most deflected portion of the pipe run in question and at intervals no greater than ten (10) feet through the run. Calculate the deflection as follows:

$$\% \text{ Deflection} = [(AASHTO \text{ Nominal Diameter} - D2) / AASHTO \text{ Nominal Diameter}] \times 100\%$$

Note: The Engineer may require that preset monitoring points be established in the culvert prior to backfilling. For these points the pre-installation measured diameter (D1) is measured and recorded. Deflection may then be calculated from the following formula:

$$\% \text{ Deflection} = [(D1 - D2) / D1] (100\%)$$

4.2 Record and submit all data.

5.0 DEDUCTION SCHEDULE. All pipe deductions shall be handled in accordance with the tables shown below.

FLEXIBLE PIPE DEFLECTION	
Amount of Deflection (%)	Payment
0.0 to 5.0	100% of the Unit Bid Price
5.1 to 9.9	50% of the Unit Bid Price ⁽¹⁾
10 or greater	Remove and Replace ⁽²⁾

⁽¹⁾ Provide Structural Analysis for HDPE and metal pipe. Based on the structural analysis, pipe may be allowed to remain in place at the reduced unit price. ⁽²⁾ The Department may allow the pipe to remain in place with no pay to the Contractor in instances where it is in the best interest to the public and where the structural analysis demonstrates that the pipe should function adequately.

RIGID PIPE REMEDIATION TABLE PIPE	
Crack Width (inches)	Payment
• 0.1	100% of the Unit Bid Price
Greater than 0.1	Remediate or Replace ⁽¹⁾

⁽¹⁾ Provide the Department in writing a method for repairing the observed cracking. Do not begin work until the method has been approved.

6.0 PAYMENT. The Department will measure the quantity in linear feet of pipe to inspect. The Department will make payment for the completed and accepted quantities under the following:

<u>Code</u>	<u>Pay Item</u>	<u>Pay Unit</u>
24814EC	Pipeline Inspection	Linear Foot
10065NS	Pipe Deflection Deduction	Dollars

KENTUCKY TRANSPORTATION CABINET DEPARTMENT OF HIGHWAYS TRAFFIC MANAGEMENT PLAN

County: Franklin Item No.: 5-600.0

Federal Project No.: FD04 SPP 0060 037 009-011

Project Description:

Project Item No. 5-600 Enhancement of US 60 (East Main Street) from Martin Luther King Blvd to Schenkel Lane in Frankfort: The LPA project includes intersection improvements at US 60 (East Main Street)/Douglas Street/Langford Avenue in Frankfort, KY and is adjacent to KY State University campus. The scope of work includes intersection realignment (Douglas and Langford are currently offset intersections), replacing the traffic signal at the intersection, adding a left turn lanes on US 60 approaching from both east and west legs of the intersection, re-aligning Douglas St. with Silvey St. from KSU campus, and replacing an existing 18" storm sewer pipe with a 24" pipe.

Roadway Classification: Urban Rural
 Local Collector Arterial Interstate

ADT (current) 21800 AM Peak Current 1160 PM Peak Current 1425 % Trucks 4.0%

Project Designation: Significant Other: ADT per lane less than 1000

Traffic Control Plan Design:

Taper and Diversion Design Speeds 30

Minimum Lane Width 11.0' Minimum Shoulder Width N/A

Minimum Bridge Width N/A

Minimum Radius N/A Maximum Grade 5.15%

Minimum Taper Length 245 Minimum Intersection Level of Service N/A

Existing Traffic Queue Lengths N/A Projected Traffic Queue Lengths N/A

Comments:

Items noted below as "Referenced" are addressed in the Traffic Control sheets of the construction plans. Traffic Control Phase 1 includes construction of a new retaining wall in the NE quadrant of the intersection. Phase 2 construction realigns the Douglas St. approach while traffic from Douglas St. is routed through a detour and temporary diversion with minimal impacts to US 60 traffic. The Traffic Control plans Phases 3 and 4 include short term single lane

closures during low volume hours along alternate sides of US 60. 2 lanes each direction will be required during AM and PM peak periods to accommodate traffic demands. Phase 3 includes widening US 60 to the north (KSU) side and construction of a left turn lane. During Phase 4 new storm drainage will be constructed along with curb & gutter on the south side of US 60. Signal operation to be maintained throughout construction, and short term shut downs will be permitted during low volume periods with the use of flaggers.

KENTUCKY TRANSPORTATION CABINET DEPARTMENT OF HIGHWAYS TRAFFIC MANAGEMENT PLAN

Discussion: The Public Information Plan will be a collaboration of Contractor and KYTC activities. Reference discussion notes below for further detail.

1) Public Information Plan			
a) Prepare with assistance from <input checked="" type="checkbox"/> KYTC or <input checked="" type="checkbox"/> Consultant			
b) Identify Trip Generators	Referenced	f) Railroad Involvement	N/A
c) Identify Types of Road Users	Referenced	g) Address Pedestrians, Bikes Mass Transit	Referenced
d) Public Information Message	Referenced	h) Address Timing, Frequency, Updates, Effectiveness of Plan	N/A
e) Public Information Strategies to be used	Referenced	i) Police & Other Emergency Services	Referenced

The Contractor will be required to advise the KYTC Engineer a minimum of 10 working days in advance of initiation of each of construction Phase 1, 2, 3 and 4. KYTC will then advise local newspaper, radio, law enforcement, 911 services, State Government offices and Kentucky State University President's office (or designee) of upcoming traffic impacts of each of phase of construction.

A minimum of 5 working days in advance of initiation of Phase 2, KYTC will provide written description of upcoming traffic diversion and detour to all residents on Douglas Street and also Kentucky State University President's office (or designee).

Variable message boards will be installed advising motorists of construction activities in the area and in advance of one lane closures per KYTC Standard Drawings.

KENTUCKY TRANSPORTATION CABINET DEPARTMENT OF HIGHWAYS TRAFFIC MANAGEMENT PLAN

2) Temporary Traffic Control Plan (For Each Phase of Construction) Phase I	
Exposure Control Measures	Positive Protection Measures
a) Is Road Closure Allowed Referenced Type: short term single lane closures permitted	a) Address Drop Off Protection Criteria Referenced
b) Detour Conditions N/A	b) Temporary Barrier Requirements N/A
c) Working Hour Restrictions Referenced	c) Evaluation of Existing Guardrail Conditions N/A
d) Holiday or Special Event Work Restrictions Referenced	d) Address Temporary Drainage Referenced
e) Evaluation of Intersection LOS N/A	Uniformed Law Enforcement Officers N/A
f) Evaluation of Queue Lengths N/A	Payment for Traffic Control*
g) Evaluation of User Costs and Incentives/Disincentives N/A	a) Method of Project Bidding Referenced
h) Address Pedestrians, Bikes, Mass Transit Referenced	b) Special Notes Referenced
Work Vehicles and Equipment Referenced	*Payment for traffic control items shall be in accordance with the Kentucky Department of Highways Standard Specifications for Road and Bridge Construction
Comments:	
Phase 1 - Proposed excavation and construction of cast-in-place retaining wall, drainage and sidewalk in the north-east quadrant of the project. Impacts to traffic along US 60 and Douglas St. will be minimal. The contractor may close the outside westbound lane of US 60 for workspace during low volume periods only and apply single lane closures per KYTC Standard Drawings.	

KENTUCKY TRANSPORTATION CABINET DEPARTMENT OF HIGHWAYS TRAFFIC MANAGEMENT PLAN

2) Temporary Traffic Control Plan (For Each Phase of Construction) Phase 2	
Exposure Control Measures	Positive Protection Measures
a) Is Road Closure Allowed Referenced Type: short term single lane closures permitted	a) Address Drop Off Protection Criteria Referenced
b) Detour Conditions Referenced	b) Temporary Barrier Requirements N/A
c) Working Hour Restrictions Referenced	c) Evaluation of Existing Guardrail Conditions N/A
d) Holiday or Special Event Work Restrictions Referenced	d) Address Temporary Drainage Referenced
e) Evaluation of Intersection LOS N/A	Uniformed Law Enforcement Officers N/A
f) Evaluation of Queue Lengths N/A	Payment for Traffic Control*
g) Evaluation of User Costs and Incentives/Disincentives N/A	a) Method of Project Bidding Referenced
h) Address Pedestrians, Bikes, Mass Transit Referenced	b) Special Notes Referenced
Work Vehicles and Equipment Referenced	*Payment for traffic control items shall be in accordance with the Kentucky Department of Highways Standard Specifications for Road and Bridge Construction
Comments:	
Phase 2a includes construction of a temporary diversion using part of an existing parking lot on the KY State University campus. Once the diversion is constructed and temporary detour is in place, Phase 2b construction includes the relocated Douglas St. approach to US 60 and reconfigured tie-in to existing Douglas St. The contractor may close the outside westbound lane of US 60 for workspace during low volume periods only and apply single lane closures per KYTC Standard Drawings.	

KENTUCKY TRANSPORTATION CABINET DEPARTMENT OF HIGHWAYS TRAFFIC MANAGEMENT PLAN

2) Temporary Traffic Control Plan (For Each Phase of Construction) Phase 3	
Exposure Control Measures	Positive Protection Measures
a) Is Road Closure Allowed Referenced Type: short term single lane closures permitted	a) Address Drop Off Protection Criteria Referenced
b) Detour Conditions N/A	b) Temporary Barrier Requirements N/A
c) Working Hour Restrictions Referenced	c) Evaluation of Existing Guardrail Conditions N/A
d) Holiday or Special Event Work Restrictions Referenced	d) Address Temporary Drainage Referenced
e) Evaluation of Intersection LOS N/A	Uniformed Law Enforcement Officers N/A
f) Evaluation of Queue Lengths N/A	Payment for Traffic Control*
g) Evaluation of User Costs and Incentives/Disincentives N/A	a) Method of Project Bidding Referenced
h) Address Pedestrians, Bikes, Mass Transit Referenced	b) Special Notes Referenced
Work Vehicles and Equipment Referenced	*Payment for traffic control items shall be in accordance with the Kentucky Department of Highways Standard Specifications for Road and Bridge Construction
Comments:	
Phase 3 includes widening of US 60 to the north (KSU) side and the new left turn lane. Construction of new curb, sidewalk and drainage on the north side will be completed. Phase 3 also includes reconstruction of the KSU parking lot that was used as part of the Phase 2 diversion. A new 24" pipe that crosses US 60 will be constructed during Phase 3. Minimum 11' lanes are required on US 60 during Phase 3. The contractor will close the outside westbound lane of US 60 during low volume periods only and apply single lane closures per KYTC Standard Drawings.	

KENTUCKY TRANSPORTATION CABINET DEPARTMENT OF HIGHWAYS TRAFFIC MANAGEMENT PLAN

2) Temporary Traffic Control Plan (For Each Phase of Construction) Phase 4	
Exposure Control Measures	Positive Protection Measures
a) Is Road Closure Allowed Referenced Type: short term single lane closures permitted	a) Address Drop Off Protection Criteria Referenced
b) Detour Conditions N/A	b) Temporary Barrier Requirements N/A
c) Working Hour Restrictions Referenced	c) Evaluation of Existing Guardrail Conditions N/A
d) Holiday or Special Event Work Restrictions Referenced	d) Address Temporary Drainage Referenced
e) Evaluation of Intersection LOS N/A	Uniformed Law Enforcement Officers N/A
f) Evaluation of Queue Lengths N/A	Payment for Traffic Control*
g) Evaluation of User Costs and Incentives/Disincentives N/A	a) Method of Project Bidding Referenced
h) Address Pedestrians, Bikes, Mass Transit Referenced	b) Special Notes Referenced
Work Vehicles and Equipment Referenced	*Payment for traffic control items shall be in accordance with the Kentucky Department of Highways Standard Specifications for Road and Bridge Construction
Comments:	
<p>Phase 4 includes reconstruction of the south side US 60, including drainage, curb & gutter, and the reconstruction of the Langford Avenue approach to US 60. Phase 4 includes replacing a section of old 18" storm sewer downstream and west of the intersection with a 24" pipe. Minimum 11' lanes are required on US 60 during Phase 4. Traffic on Langford Avenue will be maintained with the use of flaggers during construction. Traffic can also bypass the construction via Cold Spring Drive and Cold Harbor Avenue. Phase 4 also includes completion of the new traffic signal. The contractor will close the outside eastbound lane of US 60 during low volume periods only and apply single lane closures per KYTC Standard Drawings.</p> <p>Phase 5 is the completion of construction with traffic travelling on reconstructed roadway.</p>	

KENTUCKY TRANSPORTATION CABINET DEPARTMENT OF HIGHWAYS TRAFFIC MANAGEMENT PLAN

APPROVAL:


Project Manager 12/18/15
Date


Project Delivery and Preservation Manager 12-21-15
Date


Engineering Support Manager 12-18-15
Date


FHWA Representative Date

Revisions to the TMP require review/approval by the signatories.

**US 60 INTERSECTION IMPROVEMENTS AT DOUGLASS STREET AND
LANGFORD AVENUE
MILE POINTS 9.3 TO 10.1
FRANKLIN COUNTY
ITEM # 5-600
PUBLIC INFORMATION PLAN**

The primary goal of the Public Information Plan (PIP) is to inform the motoring public and area stakeholders of project information including Maintenance of Traffic (MOT) lane and road closures. The KYTC District 5 Public Information Officer (PIO) will coordinate and disseminate to stakeholders and the media appropriate information regarding the construction plans.

LOCAL STAKEHOLDERS

- Elected Officials
 - State Senator Julian Carroll – (502) 564-8100; julian.carroll@lrc.ky.gov
 - State Representative Derrick Graham – (502) 564-8100; derrick.graham@lrc.ky.gov
 - Franklin County Judge Executive Huston Wells – (502) 875-8751; hwells@franklincountyky.com
 - Franklin County Magistrate Michael Turner – (502) 472-1033; mturner@fewpb.net
 - Mayor William May – William.may59@gmail.com
 - Frankfort City Clerk Chermie Maxwell – cmaxwell@frankfort.ky.gov

- Local Agencies
 - Mark Watson, Director of Transportation for Franklin County Public Schools – (502) 695-6707; mark.watson@franklin.kyschools.us
 - Pat Melton, Franklin County Sheriff – (502) 875-8740; pat.melton@franklincountyky.com
 - Frankfort Chamber of Commerce – chamber@frankfortky.info
 - Kentucky State University, Jack McNear - (502) 597-5853; jack.mcnear@kysu.edu

- Utility Companies
 - Local utility companies are kept apprised of this project at the monthly utility coordination meetings hosted by District 5

- Neighborhoods and their Mayors

TRUCKING FIRMS AND OUT OF STATE STAKEHOLDERS

Information will be distributed electronically to trucking firms via Rick Taylor at the Department of Vehicle Regulation (502-564-4540; rick.taylor@ky.gov). Information will also be posted on the 511 website (www.511.ky.gov) and on the 511 telephone information system.

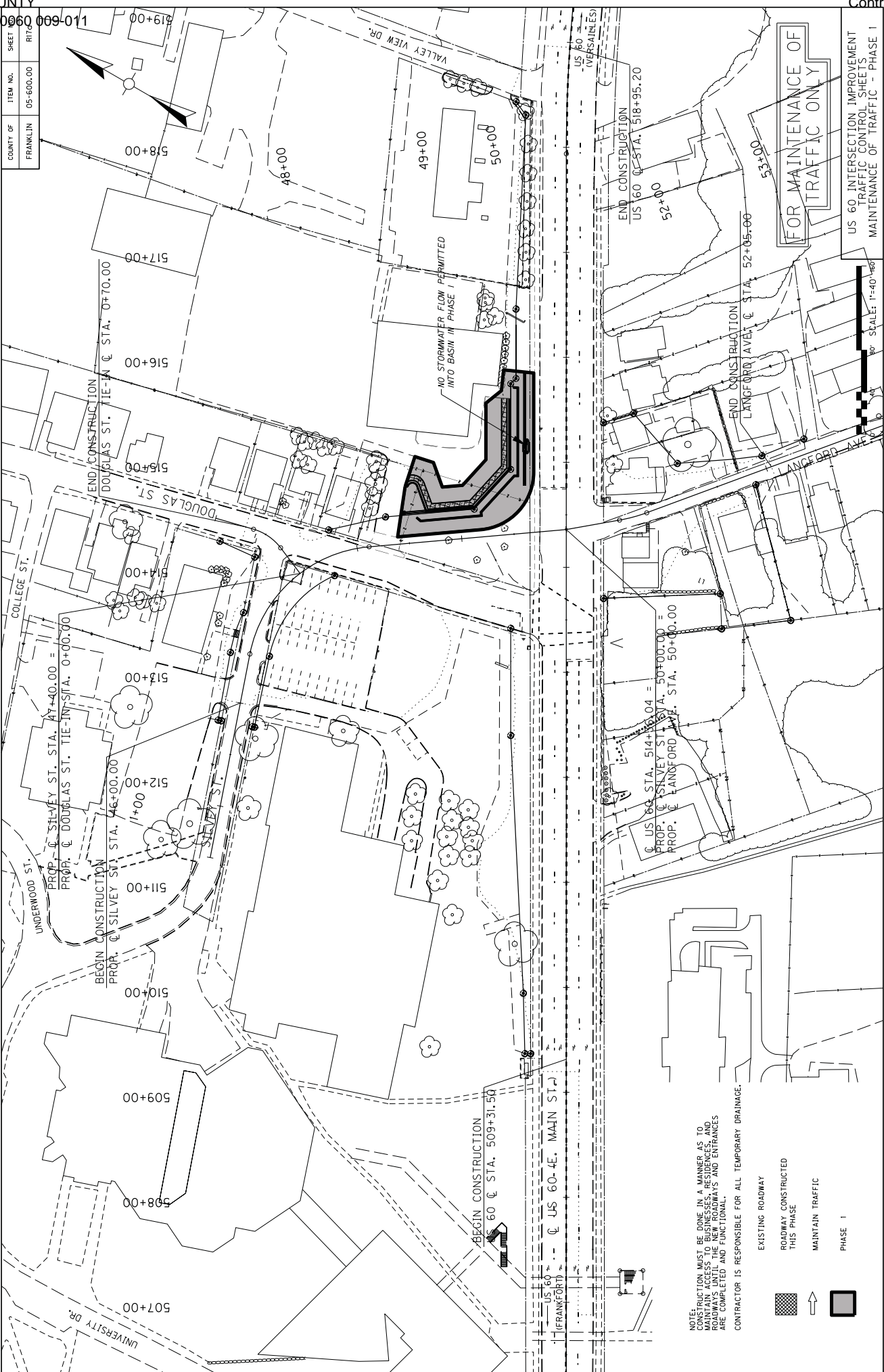
PRESENTATIONS

A project description including anticipated schedule will be provided to the media, stakeholders, and other emergency service agencies via e-mail prior to construction. Information will be provided to these groups via traffic advisories, press releases, the District 5 website and the weekly District 5 Road Show of Construction and Maintenance Activities.

MEDIA RELATIONS

The District PIO will prepare an initial news release regarding the contract award for the project. The PIO will conduct interviews with the media throughout the project duration to keep the public informed of construction progress. Traffic advisories will be submitted to the media when a change in the MOT occurs. The contractor must provide to the PIO via the Resident Engineer notification of any change in the MOT at least five (5) days prior to the change.

COUNTY OF	ITEM NO.	SHEET
FRANKLIN	05-600A.00	R170



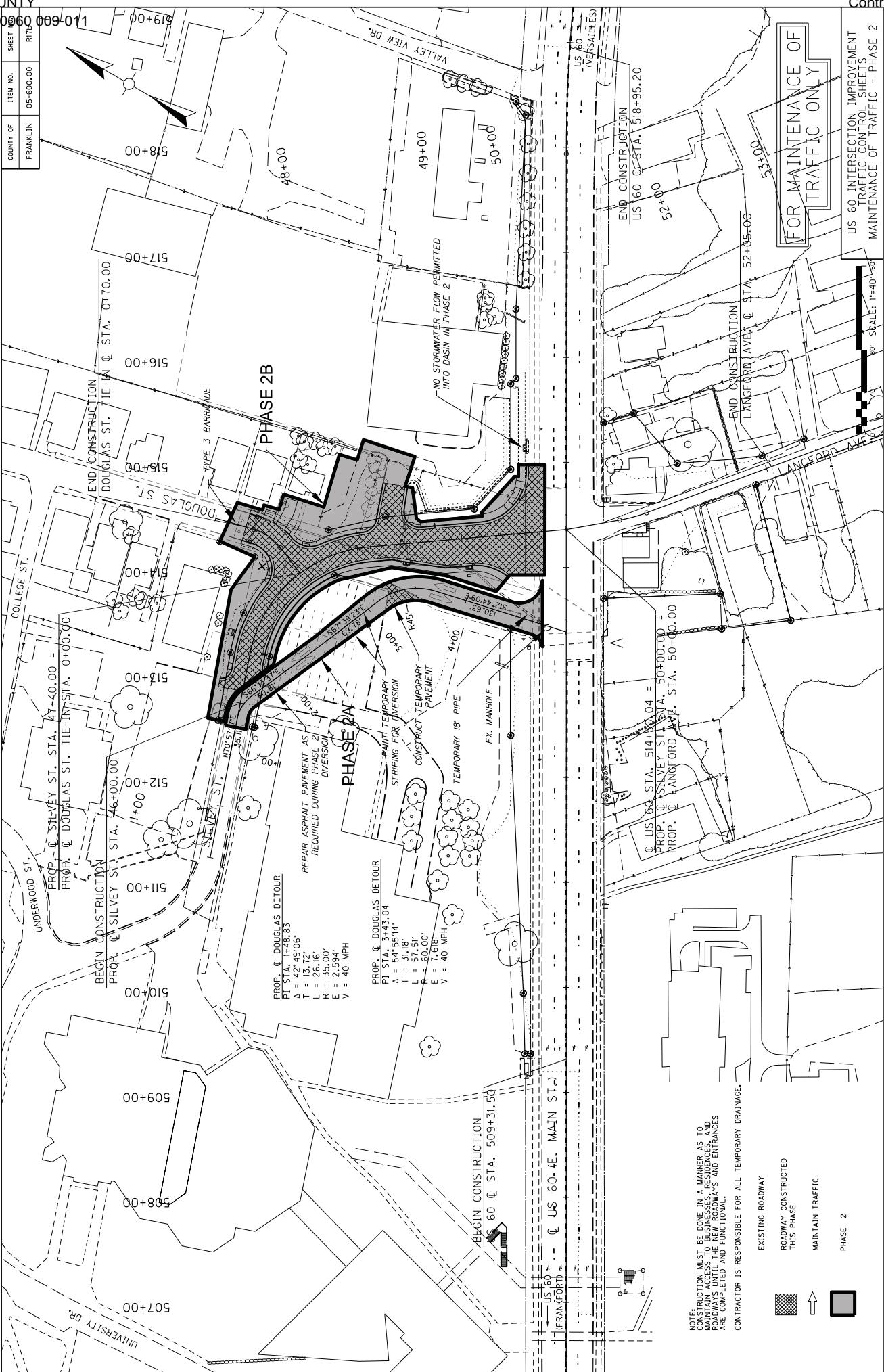
NOTE:
CONSTRUCTION MUST BE DONE IN A MANNER AS TO
MAINTAIN ACCESS TO BUSINESSES, RESIDENCES, AND
ROADWAYS UNTIL THE NEW ROADWAYS AND ENTRANCES
ARE COMPLETED AND FUNCTIONAL.
CONTRACTOR IS RESPONSIBLE FOR ALL TEMPORARY DRAINAGE.

- EXISTING ROADWAY
- ROADWAY CONSTRUCTED THIS PHASE
- MAINTAIN TRAFFIC
- PHASE 1

FOR MAINTENANCE OF TRAFFIC ONLY

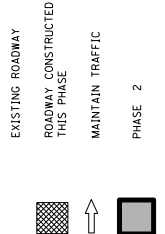
US 60 INTERSECTION IMPROVEMENT
TRAFFIC CONTROL SHEETS
MAINTENANCE OF TRAFFIC - PHASE 1

COUNTY OF	ITEM NO.	SHEET
FRANKLIN	05-600A.00	R178



PHASE 2A
 PROP. C. DOUGLAS DETOUR
 PI STA. 1+48.83
 Δ = 42°49'06"
 T = 13.72'
 L = 26.16'
 R = 35.00'
 E = 2.594'
 V = 40 MPH
 REPAIR ASPHALT PAVEMENT AS REQUIRED DURING PHASE 2 DIVERSION
 PROP. C. DOUGLAS DETOUR
 PI STA. 3+43.04
 Δ = 54°55'14"
 T = 31.18'
 L = 57.51'
 R = 60.00'
 E = 7.88'
 V = 40 MPH
 TEMPORARY 18" PIPE
 EX. MANHOLE
 NO STORMWATER FLOW PERMITTED INTO BASIN IN PHASE 2

NOTE:
 CONSTRUCTION MUST BE DONE IN A MANNER AS TO MAINTAIN ACCESS TO BUSINESSES, RESIDENCES, AND ROADWAYS UNTIL THE NEW ROADWAYS AND ENTRANCES ARE COMPLETED AND FUNCTIONAL.
 CONTRACTOR IS RESPONSIBLE FOR ALL TEMPORARY DRAINAGE.

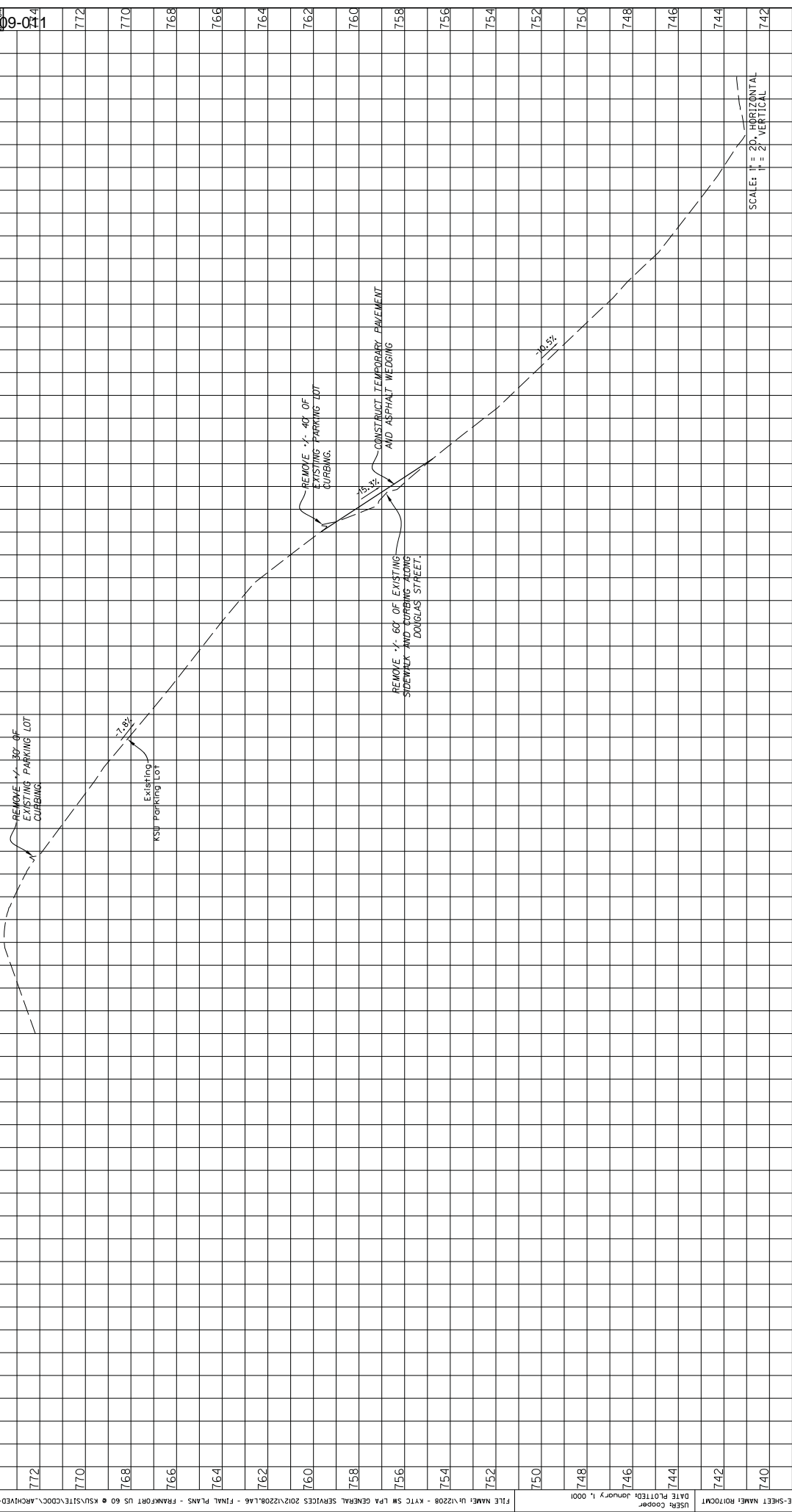


FOR MAINTENANCE OF TRAFFIC ONLY

US 60 INTERSECTION IMPROVEMENT TRAFFIC CONTROL SHEETS MAINTENANCE OF TRAFFIC - PHASE 2

COUNTY OF	ITEM NO.	SHEET
FRANKLIN	05-600A.00	R172

774	772	770	768	766	764	762	760	758	756	754	752	750	748	746	744	742	740	738	736
-----	-----	-----	-----	-----	-----	-----	-----	-----	-----	-----	-----	-----	-----	-----	-----	-----	-----	-----	-----



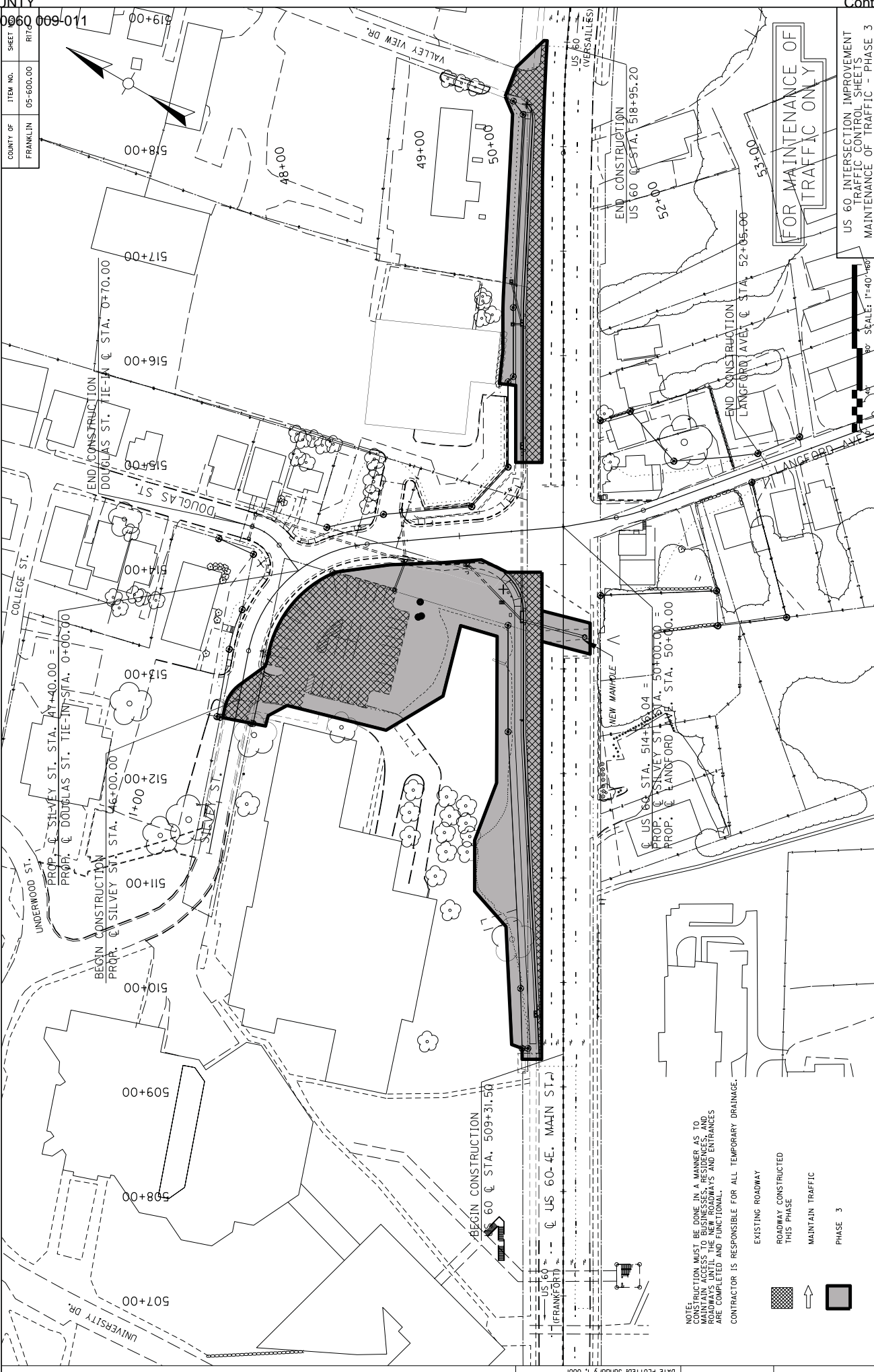
SCALE: 1" = 20' HORIZONTAL
1" = 2' VERTICAL

FOR MAINTENANCE OF TRAFFIC ONLY

US 60 INTERSECTION IMPROVEMENT
TRAFFIC CONTROL SHEET
MAINTENANCE OF TRAFFIC - PHASE 2

747.17	749.28	751.37	753.81	756.20	759.71	762.32	764.09	765.65	767.26	768.94	770.40	771.89	773.13	773.56	772.90	772.19	770.40	768.94	767.26	765.65	764.09	762.32	759.71	756.20	753.81	751.37	749.28	747.17
0+20	0+40	0+60	0+80	1+00	1+20	1+40	1+60	1+80	2+00	2+20	2+40	2+60	2+80	3+00	3+20	3+40	3+60	3+80	4+00	4+20								

DOUGLAS STREET DETOUR PROFILE



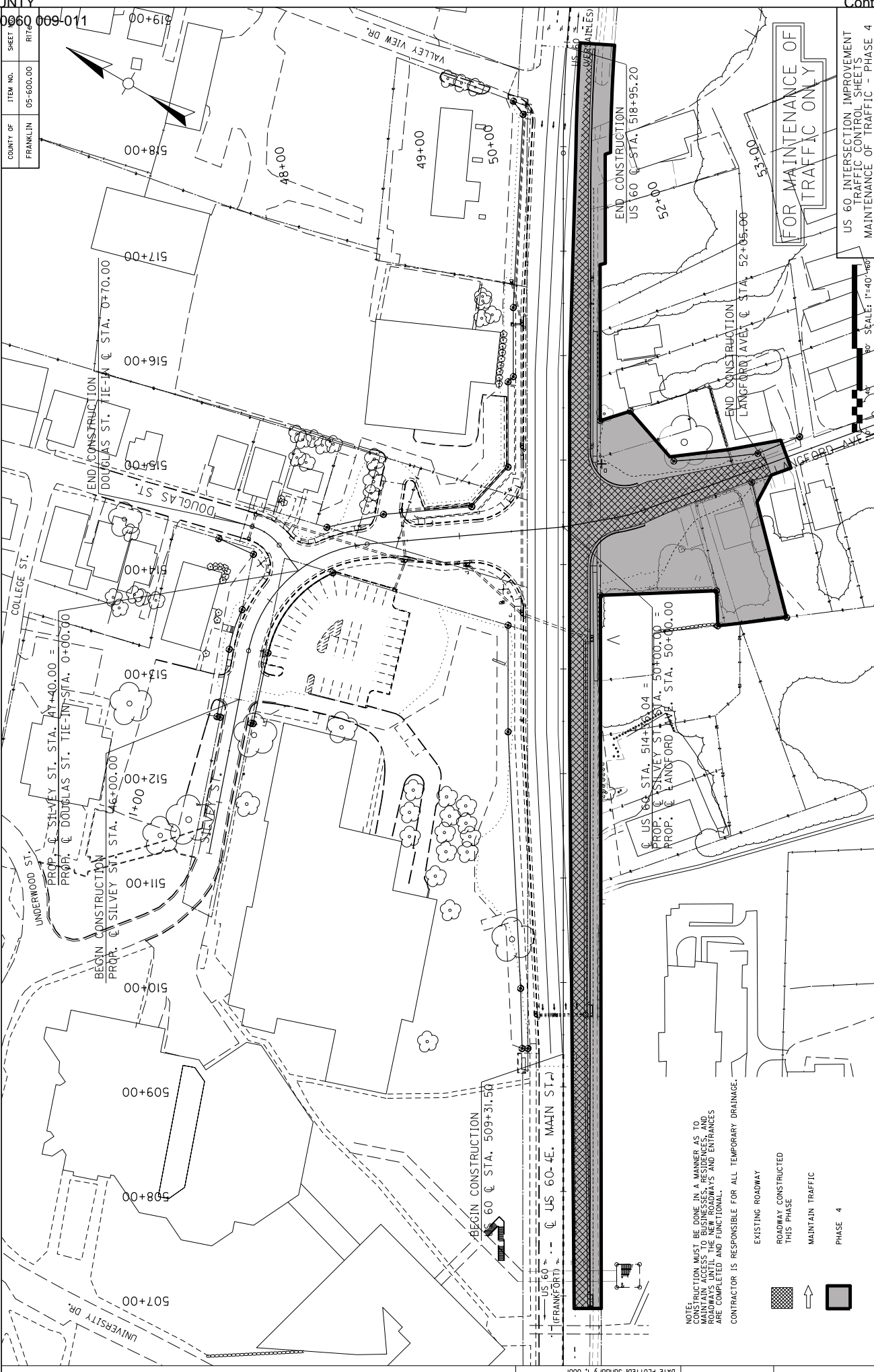
COUNTY OF	ITEM NO.	SHEET
FRANKLIN	05-600A.00	R170


NOTE:
CONSTRUCTION MUST BE DONE IN A MANNER AS TO
MAINTAIN ACCESS TO BUSINESSES, RESIDENCES, AND
ROADWAYS UNTIL THE NEW ROADWAYS AND ENTRANCES
ARE COMPLETED AND FUNCTIONAL.
CONTRACTOR IS RESPONSIBLE FOR ALL TEMPORARY DRAINAGE.

EXISTING ROADWAY
ROADWAY CONSTRUCTED
THIS PHASE
MAINTAIN TRAFFIC
PHASE 3

FOR MAINTENANCE OF
TRAFFIC ONLY

US 60 INTERSECTION IMPROVEMENT
TRAFFIC CONTROL SHEETS
MAINTENANCE OF TRAFFIC - PHASE 3



	KENTUCKY TRANSPORTATION CABINET Department of Highways DIVISION OF RIGHT OF WAY & UTILITIES	TC 62-226 Rev. 01/2016 Page 1 of 1
RIGHT OF WAY CERTIFICATION		

<input type="checkbox"/>	Original	<input checked="" type="checkbox"/>	Re-Certification	RIGHT OF WAY CERTIFICATION
--------------------------	----------	-------------------------------------	------------------	-----------------------------------

ITEM #	COUNTY	PROJECT # (STATE)	PROJECT # (FEDERAL)
5-600.00	Franklin	1100 FD04 037 8751101R	

PROJECT DESCRIPTION

Enhancement of US 60 / East Main Street

No Additional Right of Way Required

Construction will be within the limits of the existing right of way. The right of way was acquired in accordance to FHWA regulations under the Uniform Relocation Assistance and Real Property Acquisitions Policy Act of 1970, as amended. No additional right of way or relocation assistance were required for this project.

Condition # 1 (Additional Right of Way Required and Cleared)

All necessary right of way, including control of access rights when applicable, have been acquired including legal and physical possession. Trial or appeal of cases may be pending in court but legal possession has been obtained. There may be some improvements remaining on the right-of-way, but all occupants have vacated the lands and improvements, and KYTC has physical possession and the rights to remove, salvage, or demolish all improvements and enter on all land. Just Compensation has been paid or deposited with the court. All relocations have been relocated to decent, safe, and sanitary housing or that KYTC has made available to displaced persons adequate replacement housing in accordance with the provisions of the current FHWA directive.

Condition # 2 (Additional Right of Way Required with Exception)

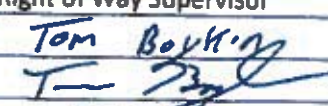
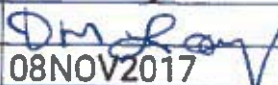
The right of way has not been fully acquired, the right to occupy and to use all rights-of-way required for the proper execution of the project has been acquired. Some parcels may be pending in court and on other parcels full legal possession has not been obtained, but right of entry has been obtained, the occupants of all lands and improvements have vacated, and KYTC has physical possession and right to remove, salvage, or demolish all improvements. Just Compensation has been paid or deposited with the court for most parcels. Just Compensation for all pending parcels will be paid or deposited with the court prior to AWARD of construction contract

Condition # 3 (Additional Right of Way Required with Exception)

The acquisition or right of occupancy and use of a few remaining parcels are not complete and/or some parcels still have occupants. All remaining occupants have had replacement housing made available to them in accordance with 49 CFR 24.204. KYTC is hereby requesting authorization to advertise this project for bids and to proceed with bid letting even though the necessary right of way will not be fully acquired, and/or some occupants will not be relocated, and/or the just compensation will not be paid or deposited with the court for some parcels until after bid letting. KYTC will fully meet all the requirements outlined in 23 CFR 635.309(c)(3) and 49 CFR 24.102(j) and will expedite completion of all acquisitions, relocations, and full payments after bid letting and prior to AWARD of the construction contract or force account construction.

Total Number of Parcels on Project	12	EXCEPTION (S) Parcel #	ANTICIPATED DATE OF POSSESSION WITH EXPLANATION
Number of Parcels That Have Been Acquired			
Signed Deed	12		
Condemnation			
Signed ROE			

Notes/ Comments (Use Additional Sheet if necessary)

LPA RW Project Manager		Right of Way Supervisor	
Printed Name		Printed Name	Tom Boykin
Signature		Signature	
Date		Date	11-2-17
Right of Way Director		FHWA	
Printed Name	DM Loy	Printed Name	
Signature		Signature	
Date	08NOV2017	Date	

UTILITIES AND RAIL CERTIFICATION NOTE

**FRANKLIN COUNTY
FD04 037 87511 01U)
ENHANCEMENT OF US 60 FROM MARTIN LUTHER
KING BLVD TO SHENKEL LANE IN FRANKFORT
ITEM NUMBER 5-600.00**

GENERAL PROJECT NOTE ON UTILITY PROTECTION

Utility coordination efforts determined that no significant utility relocation work is required to complete the project. Any work pertaining to these utility facilities is defined in the bid package and is to be carried out as instructed by the Kentucky Transportation Cabinet. The contractor will be responsible for any coordination or adjustments that are discussed or quantified in the proposal.

NOTE: DO NOT DISTURB THE FOLLOWING UTILITIES LOCATED WITHIN THE PROJECT DISTURB LIMITS

Columbia Gas, Frankfort Plant Board-Water, Frankfort Plant Board-Electric, Frankfort Plant Board-Cable, AT&T, and Frankfort Sewer have facilities that are within the project area. Please see the notes below pertaining to their locations and relocations.

Columbia Gas – has existing gas facilities that shall remain in place as described below.

A gas main also runs along the east side of Douglas Avenue, beginning out of project limits approaching from the north. This gas main runs south to approximately Douglas Street Sta 47+66 30ft Lt, then turns 90 degrees to the east and runs out of project limits.

This gas main is to remain in place and shall not be disturbed.

Frankfort Plant Board-Water – has existing water facilities that shall remain in place as described below.

An existing 12" DIP water main begins out of project limits along the South side of US 60. This pipe runs at approximately 26-28ft Rt of the US 60 roadway centerline and continues for the length of the project and out of project limits at the East end of the project.

An existing 6" DIP water main connects to the 12" water main at approximately Sta 514+29 28ft Lt and runs south along Langford Avenue at approximately 8ft Rt of Langford Avenue centerline.

An existing 8" DIP water main runs along Douglas Avenue, approaching from the north. The water main enters project limits at Sta 17+21 60ft Lt the continues south to approximately Sta 48+65 50ft Rt where the main turns 90 degrees to the west and runs to a fire hydrant at approx Sta 48+58 62ft Rt. There is an existing 2" HDPE water line that connects to the 8" DIP WM at approx Sta 48+22 33ft Rt and runs east to a water meter at approx Sta 48+62 32ft Lt.

These facilities are to remain in place and shall not be disturbed.

Frankfort Plant Board-Electric – has existing overhead facilities throughout the entire project limits.

There is an existing pole route that runs along the south side of US 60 approximately 25-30 ft Rt of the roadway centerline. Existing poles are located at approximately Sta 510+68 30ft Rt, Sta 513+57 27ft Rt, Sta 515+50 28ft Rt, Sta 516+60 25ft Rt, and Sta 517+58 27ft Rt.

From the pole at Sta 510+68 there is an aerial road crossing to an anchor pole at approximately Sta 510+41 43ft Lt.

UTILITIES AND RAIL CERTIFICATION NOTE

**FRANKLIN COUNTY
FD04 037 87511 01U)
ENHANCEMENT OF US 60 FROM MARTIN LUTHER
KING BLVD TO SHENKEL LANE IN FRANKFORT
ITEM NUMBER 5-600.00**

From the pole at Sta 513+57 27ft Rt there is an aerial crossing to a pole at approximately Sta 513+84 65ft Lt. The aerial route then continues north along Douglas Avenue to a pole at approx Sta 47+66 28ft Lt and continues out of project limits.

From the pole at Sta 516+60 25ft Rt there is an aerial road crossing to a pole at approx Sta 516+40 49ft Lt. There is an existing pole route that runs along the west side of Langford Ave at approximately. Existing poles are located at approximately Sta 50+70 11ft Rt, Sta 51+82 17ft Rt, and Sta 53+04 10ft Rt. **These facilities are to remain in place and shall not be disturbed.**

Frankfort Plant Board-Cable – has existing overhead and underground facilities throughout the entire project limits.

Existing overhead lines follow the Frankfort Plant Electric pole route. Existing underground ducts run along the south side of US 60 from approximately Sta 512+40 40ft Rt heading west along US 60 to approximately Sta 507+80 70ft Rt. From here the underground duct splits, one going north under US 60 to approximately Sta 507+80 200ft Lt, and another duct line heading south-west out of project limits.

These facilities are to remain in place and shall not be disturbed.

AT&T – has existing underground and overhead facilities throughout the entire project limits.

An existing underground clay duct bank (6 – 4”) and a concrete duct bank (18 – 4”) run along the south side of US 60 at approximately 6ft Rt and 20ft Rt, respectively, from out of project limits approaching from the west to a telephone manhole at approximately Sta 513+60. From this manhole two existing underground ducts continue east along US 60, south of the US 60 centerline and continuing out of project limits. From the manhole an existing set of 4-4” ducts also run north along the center of existing Douglas Street. An existing underground duct runs along the west side of Langford Avenue approximately 10-11ft Rt beginning at the pole at Sta 53+05 heading north to US 60, then turns west to the telephone junction box at approximately Sta 513+60.

An existing pole route runs along the north side of US 60 along Frankfort Plant Board’s route at approximately 25 – 30 ft Lt with existing poles at Sta 516+38 50ft Lt and Sta 518+00 38ft Lt. From the pole at Sta 516+38 there is an underground drop which crosses under US 60 to a junction box at Sta 516+45 30ft Rt.

These facilities are to remain in place and shall not be disturbed.

Frankfort Sewer Department – has existing sanitary sewer facilities throughout the project area.

And existing 8” sanitary sewer runs throughout the project area along the north side of US 60. The 8” pipe runs under the pedestrian bridge to a manhole at Sta 506+38 52’ Lt, then to a manhole a Sta 507+35 55’ Lt, then to a manhole at Sta 508+15 52’Lt, then to a manhole at Sta 509+43 37’ Lt, then to a manhole at Sta 511+41 50’ Lt, then to a manhole at Sta 512+22 50’ Lt, then to a manhole at Sta 515+56 43’ Lt. A 6” cleanout

UTILITIES AND RAIL CERTIFICATION NOTE

**FRANKLIN COUNTY
FD04 037 87511 01U)
ENHANCEMENT OF US 60 FROM MARTIN LUTHER
KING BLVD TO SHENKEL LANE IN FRANKFORT
ITEM NUMBER 5-600.00**

line tees into the 8" sewer at approximately Sta 514+85 and runs parallel to the 8" line back to tSta 513+97 and 49' Lt.

From the Manhole at Sta 512+22 an 8" sanitary sewer runs north along Proposed Douglas street. From that manhole the 8" sewer runs north to a manhole at Sta 48+75 72' Rt, then goes to a manhole at Sta 48+75 29' Rt, then to a manhole at Sta. 47+41 40' Lt, then continues north along the center of existing Douglas Street and out of project limits.

These facilities are to remain in place and shall not be disturbed.

Frankfort Sewer Department - has abandoned sanitary sewer facilities in the project area.

An abandoned 8" sanitary sewer begins out of project limits, south of the project area, running northerly to a manhole at approximately Sta 506+76 62ft Lt, then crossed under US 60, perpendicular to the roadway to a manhole on the north side of the road at approximately Sta. 506+80 50ft Lt; from this manhole the sanitary sewer splits. One direction continues north out of the project area. The other sanitary sewer line connecting the manhole at Sta 506+80 50ft Lt runs east along the north side of US 60 to a manhole at approximately Sta 507+80 39ft Lt, then to a manhole at approximately Sta 511+47 30ft Lt, then to a manhole at approximately Sta 513+41 34ft Lt, then to a manhole at approximately Sta 514+94 36ft Lt, then continues along US 60 at approximately 36ft Lt.

From the Manhole at Sta 513+41 34ft Lt another 8" sanitary sewer runs north along Douglas Street to a manhole at approximately Sta 48+91 44ft Rt, then continues along Douglas street o a manhole at approximately Sta 47+42 41ft Lt, then continues along approximately the center of Douglas Street and out of project limits.

There is another abandoned 8" sanitary sewer lint which runs along Langford avenue beginning out of project limits and running approximately northwest parallel to Langford at approximately 3ft Lt of Langford Avenue centerline to a manhole at approximately Sta 51+69 2ft Lt then turns 90 and goes to a manhole at approximately Sta 51+78 148ft Lt then to a manhole at approximately Sta 51+84 167ft Lt.

The Contractor is fully responsible for protection of all utilities listed above

THE FOLLOWING COMPANIES ARE RELOCATING/ADJUSTING THEIR UTILITIES WITHIN THE PROJECT LIMITS AND WILL BE COMPLETE PRIOR TO CONSTRUCTION

N/A

THE FOLLOWING COMPANIES HAVE FACILITIES TO BE RELOCATED/ADJUSTED BY THE COMPANY OR THE COMPANY'S SUBCONTRACTOR AND IS TO BE COORDINATED WITH THE ROAD CONTRACT

N/A

UTILITIES AND RAIL CERTIFICATION NOTE

**FRANKLIN COUNTY
FD04 037 87511 01U)
ENHANCEMENT OF US 60 FROM MARTIN LUTHER
KING BLVD TO SHENKEL LANE IN FRANKFORT
ITEM NUMBER 5-600.00**

THE FOLLOWING COMPANIES HAVE FACILITIES TO BE RELOCATED/ADJUSTED BY THE ROAD CONTRACTOR AS INCLUDED IN THIS CONTRACT

N/A

THE FOLLOWING RAIL COMPANIES HAVE FACILITIES IN CONJUNCTION WITH THIS PROJECT AS NOTED

No Rail Involved Minimal Rail Involved (See Below) Rail Involved (See Below)

SPECIAL CAUTION NOTE – PROTECTION OF UTILITIES

The contractor will be responsible for contacting all utility facility owners on the subject project to coordinate his activities. The contractor will coordinate his activities to minimize and, where possible, avoid conflicts with utility facilities. Due to the nature of the work proposed, it is unlikely to conflict with the existing utilities beyond minor facility adjustments. Where conflicts with utility facilities are unavoidable, the contractor will coordinate any necessary relocation work with the facility owner and Resident Engineer. The Kentucky Transportation Cabinet maintains the right to remove or alter portions of this contract if a utility conflict occurs.

The utility facilities as noted in the previous section(s) have been determined using data garnered by varied means and with varying degrees of accuracy: from the facility owners, a result of S.U.E., field inspections, and/or reviews of record drawings. The facilities defined may not be inclusive of all utilities in the project scope and are not Level A quality, unless specified as such. It is the contractor’s responsibility to verify all utilities and their respective locations before excavating.

BEFORE YOU DIG

The contractor is instructed to call 1-800-752-6007 to reach KY 811, the one-call system for information on the location of existing underground utilities. The call is to be placed a minimum of two (2) and no more than ten (10) business days prior to excavation. The contractor should be aware that owners of underground facilities are not required to be members of the KY 811 one-call Before-U-Dig (BUD) service. The contractor must coordinate excavation with the utility owners, including those whom do not subscribe to KY 811. It may be necessary for the contractor to contact the County Court Clerk to determine what utility companies have facilities in the area.

Please Note: The information presented in this Utility Note is informational in nature and the information contained herein is not guaranteed.

UTILITIES AND RAIL CERTIFICATION NOTE

**FRANKLIN COUNTY
FD04 037 87511 01U)
ENHANCEMENT OF US 60 FROM MARTIN LUTHER
KING BLVD TO SHENKEL LANE IN FRANKFORT
ITEM NUMBER 5-600.00**

AREA UTILITIES CONTACT LIST

<u>Utility Company/Agency</u>	<u>Contact Information</u>
1. AT&T KY 894 East Main Street Ext Georgetown, KY 40324	Frank Ambrose FA2207@ATT.com office (502)867-8240 cell (859)753-8377
2. Frankfort Plant Board - Electric P O Box 308 Frankfort, KY 40601	Vent Foster (502) 352-4402 VFoster@FEWPB.com Jim Carter (502)352-4401 JCarter@FEWPB.com
3. Frankfort Plant Board - CATV P O Box 308 Frankfort, KY 40601	Shane Holt (502) 352-4546 SHolt@FEWPB.com Adam Hellard (502) 352-4551 AHellard@FEWPB.com
4. Frankfort Plant Board - Water P O Box 308 Frankfort, KY 40601 (502) 875-4501	David Billings (502) 352-4468 DBillings@FEWPB.com
5. Frankfort Sewer Department 1200 Kentucky Ave. Frankfort, KY 40601	William Scalf WScalf@Frankfort.ky.gov (502) 875-2448 Bob Peterson BPeterson@Frankfort.ky.gov Cell (502)229-6313
6. Bluegrass Energy P O Box 990	Tony Smith, Field Engineering tonys@bgenenergy.com

UTILITIES AND RAIL CERTIFICATION NOTE

**FRANKLIN COUNTY
FD04 037 87511 01U)
ENHANCEMENT OF US 60 FROM MARTIN LUTHER
KING BLVD TO SHENKEL LANE IN FRANKFORT
ITEM NUMBER 5-600.00**

- 1201 Lexington Rd.
Nicholasville, KY 40356
- (859) 885-2134
Matt Collett, Staking Technician
mattc@bgenergy.com
(859) 887-8110
Greg Harrington, COO
gregh@bgenergy.com
(859) 885-2114
7. Peaks Mill Water District
7165 US Highway 127 N
Frankfort, KY 40601
- Dale Gatewood
(502) 227-5740
(502) 695-2641 – Maint. Office
8. Farmdale Water District
100 Highwood Drive
Frankfort, KY 40601
- David Robinson or
Clifford Toles
(502) 223-3562
FWD@fewpb.net
- Does not participate in BUD; call David Robinson for locate assistance.**
9. Columbia Gas of Kentucky, Inc.
2001 Mercer Rd., PO Box 14241
Lexington, KY 40512
- David Lemons
DNLemons@NiSource.com
cell – (859) 227-3872
Office-(859) 288-0249
Bryan Slone
BKSlone@NiSource.com
Office-(859) 288- 0253
Cell – (859) 221-2185
10. LG&E KU
820 West Broadway
Louisville, KY 40202
LG&E Emergency Number (502) 589-1444
KU Emergency Number 1-800-331-7370
- Greg Geiser
work: (502) 627-3708
Greg.Geiser@lge-ku.com
11. Elkhorn Water District
- Dale Gatewood

UTILITIES AND RAIL CERTIFICATION NOTE

**FRANKLIN COUNTY
FD04 037 87511 01U)
ENHANCEMENT OF US 60 FROM MARTIN LUTHER
KING BLVD TO SHENKEL LANE IN FRANKFORT
ITEM NUMBER 5-600.00**

- P.O.Box 67
Frankfort, KY 40602
Telephone (502) 695-2641(maint. office)
***Located in the Peak's Mill Water District office**
- OR
- Nancy Sherrow
Andi Breeck
(502)695-4431
- 12.** Atmos Energy
105 Hudson Blvd
Shelbyville, KY 40065
- Bernie Anderson
cell: (502) 321-8073
Bernie.Anderson@AtmosEnergy.com
Ryne White
Ryne.white@atmosenergy.com
Cell: (270) 929-1706
- 13.** North Shelby Water
North Shelby Water District
P.O. Box 97, 4596 Bagdad Rd.
Bagdad, KY 40003
- Pete Hedges
PeteHedges@bellsouth.net
(502) 747-8942
- 14.** Kentucky Data Link (KDL now Windstream) James Galvin
111 S. Main St.
Elizabethtown, KY 42071
- Office: 270-765-1818
Mobile: 270-748-9249
James.Galvin@windstream.com
Mark Ware
Mark.Ware@windstream.com
Timothy Gibson
Timothy.Gibson@Windstream.com
Emergency contact ONLY
- 15.** East Kentucky Power Coop
4775 Lexington Road
Winchester, KY 40391
- OR**
P O Box 707
Winchester, KY 40391
- Garry Harvey
(859)745-9601
Garry.Harvey@EKPC.coop
Barry Warner
Barry.Warner@EKPC.coop
(859) 745-9304
- 16.** Windstream Kentucky, Inc.
- Roger Redford

UTILITIES AND RAIL CERTIFICATION NOTE

**FRANKLIN COUNTY
FD04 037 87511 01U)
ENHANCEMENT OF US 60 FROM MARTIN LUTHER
KING BLVD TO SHENKEL LANE IN FRANKFORT
ITEM NUMBER 5-600.00**

- | | |
|---|---|
| 229 Lees Valley Road
Shepherdsville, KY 40165
502-957-7127
OR
111 S. Main St.
Elizabethtown, KY 42071 | cell – (502) 264-2053
Roger.Redford@Windstream.com |
| 17. Charter Communications
10168 Linn Station Road
Suite 120
Louisville, KY 40223 | Barry Roberts
(270) 723-7358
Barry.Roberts@Windstream.com

Deno Barbour
(502) 664-7395 – Cell
(502) 357-4376 – Office
Dwight.Barbour@charter.com
Kevin Mercer
(502) 817-5055 – Cell
(502) 357-4724 - Office
kevin.mercer@charter.com
Richard Bast
(502) 817-0734 – Cell
(502) 357-4118 - Office
richard.bast@charter.com |
| 18. Sprint - Fiber Optics
11370 Enterprise Park Dr.
Sharonville, OH 45241 | Steven T. Hughes
Steven.Hughes@sprint.com
Office (513) 459-5796
Cell (513) 462-7221 |
| 19. AT&T Legacy
7555 E. Pleasant Valley Rd. – Suite 140
Independence, OH 44131 | Mike Diederich
MD4145@att.com
Phone - (216) 750-0135
Cell - (216) 212-8556
Don Garr
DRGarr@Hughes.net
Cell: (502) 741-8374 |
| 20. Kentucky American Water Company
2300 Richmond Rd | Cole Mitcham
Cole.Mitcham@AMWater.com |

UTILITIES AND RAIL CERTIFICATION NOTE

**FRANKLIN COUNTY
FD04 037 87511 01U)
ENHANCEMENT OF US 60 FROM MARTIN LUTHER
KING BLVD TO SHENKEL LANE IN FRANKFORT
ITEM NUMBER 5-600.00**

Lexington, KY 40502

(859) 335-3415

- 21.** Shelby Energy Cooperative
P.O. Box 311, 620 Old Finchville Road
Shelbyville, KY 40065
(502) 633-4420

Jason Ginn
Jason@ShelbyEnergy.com
cell: 502-643-2778

- 22.** Crown Castle Network Operations
10300 Ormsby Park Place
Suite 501
Louisville, KY 40223

Rebecca Gray
rebecca.gray@CrownCastle.com
(502)318-1313
Chris Gladstone
Chris.Gladstone@CrownCastle.com
(502) 689-2162



MATTHEW G. BEVIN
GOVERNOR

CHARLES G. SNAVELY
SECRETARY

ENERGY AND ENVIRONMENT CABINET
DEPARTMENT FOR ENVIRONMENTAL PROTECTION

AARON B. KEATLEY
COMMISSIONER

300 SOWER BOULEVARD
FRANKFORT, KENTUCKY 40601

October 18, 2017

Stephanie Stoops
US 60 - Franklin Co
8310 Westport Rd
Louisville, KY 40242

Re: **KYR10 Coverage Acknowledgment**

KPDES No.: **KYR10K046**

Permit Type: **Construction**

AI ID: **128277**

5-600.00

US 60

Frankfort, Franklin County, Kentucky

Dear **Stephanie Stoops**:

The discharges associated with the Notice of Intent you submitted have been approved for coverage under the "Kentucky Pollutant Discharge Elimination System (KPDES) General Permit for Storm Water Discharges Associated with Construction Activities (KYR100000)" master general permit. Your coverage becomes effective on the date of this letter, and will automatically terminate: two years from the effective date of coverage unless an extension is requested prior to the termination date, upon the November 30, 2019, expiration of the KYR100000 master general permit, or upon the revocation of coverage by the Division of Water, whichever comes first. During this period of coverage, all discharges shall comply with the conditions of the KYR100000 master general permit. This permit and links to the eNOI (and permit coverage extension) and eNOT forms can be found on our website:

<http://dep.ky.gov/formslibrary/Documents/KYR10PermitPage.pdf>.

Any questions concerning the general permit and its requirements should be directed to the undersigned at **502-782-7048**:

Construction Site GPS Coordinates: **38.201167, -84.853139**

Receiving Water: **Kentucky River**

Sincerely,

A handwritten signature in black ink that reads "Justina Bascombe".

Justina Bascombe

Surface Water Permits Branch

Division of Water

KyTC BMP Plan for Project PCN ## - #####



Kentucky Transportation Cabinet

Highway District 5

And

_____ **(2), Construction**

**Kentucky Pollutant Discharge Elimination System
Permit KYR10**

Best Management Practices (BMP) plan

Groundwater protection plan

For Highway Construction Activities

For

**Enhancement of US 60 from Martin Luther King
Blvd to Schenkel Lane in Frankfort**

Project: PCN ## - #####

KyTC BMP Plan for Project PCN ## -

Project information

Note – (1) = Design (2) = Construction (3) = Contractor

1. Owner – Kentucky Transportation Cabinet, District 5
2. Resident Engineer: (2)
3. Contractor name: (2)
Address: (2)

Phone number: (2)
Contact: (2)
Contractors agent responsible for compliance with the KPDES permit requirements (3):
4. Project Control Number (2)
5. Route **US 60**
6. Latitude/Longitude (project mid-point) **38/12/04, 84/51/11**
7. County (project mid-point) **Franklin**
8. Project start date (date work will begin): (2)
9. Projected completion date: (2)

KyTC BMP Plan for Project PCN ## -

A. Site description:

1. Nature of Construction Activity **Reconstruct Intersection of US 60 at Langford Ave/Douglas Street (1)**
2. Order of major soil disturbing activities (2) and (3)
3. Projected volume of material to be moved **3,703 CY (1)**
4. Estimate of total project area (acres) **1.0 (1)**
5. Estimate of area to be disturbed (acres) **1.0 (1)**
6. Post construction runoff coefficient will be included in the project drainage folder. Persons needing information pertaining to the runoff coefficient will contact the resident engineer to request this information.(1)
7. Data describing existing soil condition (1) & (2)
8. Data describing existing discharge water quality (if any) (1) & (2)
9. Receiving water name **Kentucky River**
10. TMDLs and Pollutants of Concern in Receiving Waters: **NO TMDLS INVOLVED ON THIS PROJECT**
11. Site map – Project layout sheet plus the erosion control sheets in the project plans that depict Disturbed Drainage Areas (DDAs) and related information. These sheets depict the existing project conditions with areas delineated by DDA (drainage area bounded by watershed breaks and right of way limits), the storm water discharge locations (either as a point discharge or as overland flow) and the areas that drain to each discharge point. These plans define the limits of areas to be disturbed and the location of control measures. Controls will be either site specific as designated by the designer or will be annotated by the contractor and resident engineer before disturbance commences. The project layout sheet shows the surface waters and wetlands.
12. Potential sources of pollutants:

The primary source of pollutants is solids that are mobilized during storm events. Other sources of pollutants include oil/fuel/grease from servicing

KyTC BMP Plan for Project PCN ## -

and operating construction equipment, concrete washout water, sanitary wastes and trash/debris. (3)

B. Sediment and Erosion Control Measures:

1. Plans for highway construction projects will include erosion control sheets that depict Disturbed Drainage Areas (DDAs) and related information. These plan sheets will show the existing project conditions with areas delineated by DDA within the right of way limits, the discharge points and the areas that drain to each discharge point. Project managers and designers will analyze the DDAs and identify Best Management Practices (BMPs) that are site specific. The balance of the BMPs for the project will be listed in the bid documents for selection and use by the contractor on the project with approval by the resident engineer.

Projects that do not have DDAs annotated on the erosion control sheets will employ the same concepts for development and managing BMP plans.

2. Following award of the contract, the contractor and resident engineer will annotate the erosion control sheets showing location and type of BMPs for each of the DDAs that will be disturbed at the outset of the project. This annotation will be accompanied by an order of work that reflects the order or sequence of major soil moving activities. The remaining DDAs are to be designated as "Do Not Disturb" until the contractor and resident engineer prepare the plan for BMPs to be employed. The initial BMP's shall be for the first phase (generally Clearing and Grubbing) and shall be modified as needed as the project changes phases. The BMP Plan will be modified to reflect disturbance in additional DDA's as the work progresses. All DDA's will have adequate BMP's in place before being disturbed.
3. As DDAs are prepared for construction, the following will be addressed for the project as a whole or for each DDA as appropriate:
 - Ø Construction Access – This is the first land-disturbing activity. As soon as construction begins, bare areas will be stabilized with gravel and temporary mulch and/or vegetation.
 - Ø At the beginning of the project, all DDAs for the project will be inspected for areas that are a source of storm water pollutants. Areas that are a source of pollutants will receive appropriate cover or BMPs to arrest the introduction of pollutants into storm water. Areas that have not been opened by the contractor will be

KyTC BMP Plan for Project PCN ## -

inspected periodically (once per month) to determine if there is a need to employ BMPs to keep pollutants from entering storm water.

- Ø Clearing and Grubbing – The following BMP's will be considered and used where appropriate.
 - Leaving areas undisturbed when possible.
 - Silt basins to provide silt volume for large areas.
 - Silt Traps Type A for small areas.
 - Silt Traps Type C in front of existing and drop inlets which are to be saved
 - Diversion ditches to catch sheet runoff and carry it to basins or traps or to divert it around areas to be disturbed.
 - Brush and/or other barriers to slow and/or divert runoff.
 - Silt fences to catch sheet runoff on short slopes. For longer slopes, multiple rows of silt fence may be considered.
 - Temporary Mulch for areas which are not feasible for the fore mentioned types of protections.
 - Non-standard or innovative methods.
- Ø Cut & Fill and placement of drainage structures - The BMP Plan will be modified to show additional BMP's such as:
 - Silt Traps Type B in ditches and/or drainways as they are completed
 - Silt Traps Type C in front of pipes after they are placed
 - Channel Lining
 - Erosion Control Blanket
 - Temporary mulch and/or seeding for areas where construction activities will be ceased for 21 days or more.
 - Non-standard or innovative methods
- Ø Profile and X-Section in place – The BMP Plan will be modified to show elimination of BMP's which had to be removed and the addition of new BMP's as the roadway was shaped. Probably changes include:
 - Silt Trap Type A, Brush and/or other barriers, Temporary Mulch, and any other BMP which had to be removed for final grading to take place.
 - Additional Silt Traps Type B and Type C to be placed as final drainage patterns are put in place.
 - Additional Channel Lining and/or Erosion Control Blanket.
 - Temporary Mulch for areas where Permanent Seeding and Protection cannot be done within 21 days.
 - Special BMP's such as Karst Policy
- Ø Finish Work (Paving, Seeding, Protect, etc.) – A final BMP Plan will result from modifications during this phase of construction. Probably changes include:
 - Removal of Silt Traps Type B from ditches and drainways if they are protected with other BMP's which are sufficient to

KyTC BMP Plan for Project PCN ## -

control erosion, i.e. Erosion Control Blanket or Permanent Seeding and Protection on moderate grades.

- Permanent Seeding and Protection
- Placing Sod
- Planting trees and/or shrubs where they are included in the project

Ø BMP's including Storm Water Management Devices such as velocity dissipation devices and Karst policy BMP's to be installed during construction to control the pollutants in storm water discharges that will occur after construction has been completed are : (1)

C. Other Control Measures

1. No solid materials, including building materials, shall be discharged to waters of the commonwealth, except as authorized by a Section 404 permit.
2. Waste Materials

All waste materials that may leach pollutants (paint and paint containers, caulk tubes, oil/grease containers, liquids of any kind, soluble materials, etc.) will be collected and stored in appropriate covered waste containers. Waste containers shall be removed from the project site on a sufficiently frequent basis as to not allow wastes to become a source of pollution. All personnel will be instructed regarding the correct procedure for waste disposal. Wastes will be disposed in accordance with appropriate regulations. Notices stating these practices will be posted in the office.

3. Hazardous Waste

All hazardous waste materials will be managed and disposed of in the manner specified by local or state regulation. The contractor shall notify the Resident Engineer if there any hazardous wastes being generated at the project site and how these wastes are being managed. Site personnel will be instructed with regard to proper storage and handling of hazardous wastes when required. The Transportation Cabinet will file for generator, registration when appropriate, with the Division of Waste Management and advise the contractor regarding waste management requirements.

4. Spill Prevention

The following material management practices will be used to reduce the risk of spills or other exposure of materials and substances to the weather and/or runoff.

Ø **Good Housekeeping:**

KyTC BMP Plan for Project PCN ## -

The following good housekeeping practices will be followed onsite during the construction project.

- An effort will be made to store only enough product required to do the job
- All materials stored onsite will be stored in a neat, orderly manner in their appropriate containers and, if possible, under a roof or other enclosure
- Products will be kept in their original containers with the original manufacturer's label
- Substances will not be mixed with one another unless recommended by the manufacturer
- Whenever possible, all of the product will be used up before disposing of the container
- Manufacturers' recommendations for proper use and disposal will be followed
- The site contractor will inspect daily to ensure proper use and disposal of materials onsite

Ø **Hazardous Products:**

These practices will be used to reduce the risks associated with any and all hazardous materials.

- Products will be kept in original containers unless they are not resealable
- Original labels and material safety data sheets (MSDS) will be reviewed and retained
- Contractor will follow procedures recommended by the manufacturer when handling hazardous materials
- If surplus product must be disposed of, manufacturers' or state/local recommended methods for proper disposal will be followed

The following product-specific practices will be followed onsite:

Ø **Petroleum Products:**

Vehicles and equipment that are fueled and maintained on site will be monitored for leaks, and receive regular preventative maintenance to reduce the chance of leakage. Petroleum products onsite will be stored in tightly sealed containers, which are clearly labeled and will be protected from exposure to weather.

The contractor shall prepare an Oil Pollution Spill Prevention Control and Countermeasure plan when the project that involves the storage of petroleum

KyTC BMP Plan for Project PCN ## -

products in 55 gallon or larger containers with a total combined storage capacity of 1,320 gallons. This is a requirement of 40 CFR 112.

This project (will / will not) (3) have over 1,320 gallons of petroleum products with a total capacity, sum of all containers 55 gallon capacity and larger.

∅ **Fertilizers:**

Fertilizers will be applied at rates prescribed by the contract, standard specifications or as directed by the resident engineer. Once applied, fertilizer will be covered with mulch or blankets or worked into the soil to limit exposure to storm water. Storage will be in a covered shed. The contents of any partially used bags of fertilizer will be transferred to a sealable plastic bin to avoid spills.

∅ **Paints:**

All containers will be tightly sealed and stored indoors or under roof when not being used. Excess paint or paint wash water will not be discharged to the drainage or storm sewer system but will be properly disposed of according to manufacturers' instructions or state and local regulations.

∅ **Concrete Truck Washout:**

Concrete truck mixers and chutes will not be washed on pavement, near storm drain inlets, or within 75 feet of any ditch, stream, wetland, lake, or sinkhole. Where possible, excess concrete and wash water will be discharged to areas prepared for pouring new concrete, flat areas to be paved that are away from ditches or drainage system features, or other locations that will not drain off site. Where this approach is not possible, a shallow earthen wash basin will be excavated away from ditches to receive the wash water

∅ **Spill Control Practices**

In addition to the good housekeeping and material management practices discussed in the previous sections of this plan, the following practices will be followed for spill prevention and cleanup:

- Manufacturers' recommended methods for spill cleanup will be clearly posted. All personnel will be made aware of procedures and the location of the information and cleanup supplies.
- Materials and equipment necessary for spill cleanup will be kept in the material storage area. Equipment and materials will include as appropriate, brooms, dust pans, mops, rags, gloves, oil absorbents, sand, sawdust, and plastic and metal trash containers.
- All spills will be cleaned up immediately after discovery.

KyTC BMP Plan for Project PCN ## -

- The spill area will be kept well ventilated and personnel will wear appropriate protective clothing to prevent injury from contact with a hazardous substance.
- Spills of toxic or hazardous material will be reported to the appropriate state/local agency as required by KRS 224 and applicable federal law.
- The spill prevention plan will be adjusted as needed to prevent spills from reoccurring and improve spill response and cleanup.
- Spills of products will be cleaned up promptly. Wastes from spill clean up will be disposed in accordance with appropriate regulations.

D. Other State and Local Plans

This BMP plan shall include any requirements specified in sediment and erosion control plans, storm water management plans or permits that have been approved by other state or local officials. Upon submittal of the NOI, other requirements for surface water protection are incorporated by reference into and are enforceable under this permit (even if they are not specifically included in this BMP plan). This provision does not apply to master or comprehensive plans, non-enforceable guidelines or technical guidance documents that are not identified in a specific plan or permit issued for the construction site by state or local officials. (1)

E. Maintenance

1. The BMP plan shall include a clear description of the maintenance procedures necessary to keep the control measures in good and effective operating condition.
- Maintenance of BMPs during construction shall be a result of weekly and post rain event inspections with action being taken by the contractor to correct deficiencies.
 - Post Construction maintenance will be a function of normal highway maintenance operations. Following final project acceptance by the cabinet, district highway crews will be responsible for identification and correction of deficiencies regarding ground cover and cleaning of storm water BMPs. The project manager shall identify any BMPs that will be for the purpose of post construction storm water management with specific guidance for any non-routine maintenance. (1)

F. Inspections

KyTC BMP Plan for Project PCN ## -

Inspection and maintenance practices that will be used to maintain erosion and sediment controls:

- Ø All erosion prevention and sediment control measures will be inspected at least once each week and following any rain of one-half inch or more.
- Ø Inspections will be conducted by individuals that have received KyTC Grade Level II training or other qualification as prescribed by the cabinet that includes instruction concerning sediment and erosion control.
- Ø Inspection reports will be written, signed, dated, and kept on file.
- Ø Areas at final grade will be seeded and mulched within 14 days.
- Ø Areas that are not at final grade where construction has ceased for a period of 21 days or longer and soil stock piles shall receive temporary mulch no later than 14 days from the last construction activity in that area.
- Ø All measures will be maintained in good working order; if a repair is necessary, it will be initiated within 24 hours of being reported.
- Ø Built-up sediment will be removed from behind the silt fence before it has reached halfway up the height of the fence.
- Ø Silt fences will be inspected for bypassing, overtopping, undercutting, depth of sediment, tears, and to ensure attachment to secure posts.
- Ø Sediment basins will be inspected for depth of sediment, and built-up sediment will be removed when it reaches 70 percent of the design capacity and at the end of the job.
- Ø Diversion dikes and berms will be inspected and any breaches promptly repaired. Areas that are eroding or scouring will be repaired and re-seeded / mulched as needed.
- Ø Temporary and permanent seeding and mulching will be inspected for bare spots, washouts, and healthy growth. Bare or eroded areas will be repaired as needed.
- Ø All material storage and equipment servicing areas that involve the management of bulk liquids, fuels, and bulk solids will be inspected weekly for conditions that represent a release or possible release of pollutants to the environment.

G. Non – Storm Water discharges

It is expected that non-storm water discharges may occur from the site during the construction period. Examples of non-storm water discharges include:

- Ø Water from water line flushings.

KyTC BMP Plan for Project PCN ## -

- Ø Water form cleaning concrete trucks and equipment.
- Ø Pavement wash waters (where no spills or leaks of toxic or hazardous materials have occurred).
- Ø Uncontaminated groundwater and rain water (from dewatering during excavation).

All non-storm water discharges will be directed to the sediment basin or to a filter fence enclosure in a flat vegetated infiltration area or be filtered via another approved commercial product.

H. Groundwater Protection Plan (3)

This plan serves as the groundwater protection plan as required by 401 KAR 5:037.

- Ø Contractors statement: (3)

The following activities, as enumerated by 401 KAR 5:037 Section 2 that require the preparation and implementation of a groundwater protection plan, will or may be may be conducted as part of this construction project:

_____ 2. (e) land treatment or land disposal of a pollutant;

_____ 2. (f) Storing, ..., or related handling of hazardous waste, solid waste or special waste, ..., in tanks, drums, or other containers, or in piles, (This does not include wastes managed in a container placed for collection and removal of municipal solid waste for disposal off site);

_____ 2. (g) Handling of materials in bulk quantities (equal or greater than 55 gallons or 100 pounds net dry weight transported held in an individual container) that, if released to the environment, would be a pollutant;

_____ 2. (j) Storing or related handling of road oils, dust suppressants,, at a central location;

_____ 2. (k) Application or related handling of road oils, dust suppressants or deicing materials, (does not include use of chloride-based deicing materials applied to roads or parking lots);

_____ 2. (m) Installation, construction, operation, or abandonment of wells, bore holes, or core holes, (this does not include bore holes for the purpose of explosive demolition);

Or, check the following only if there are no qualifying activities

KyTC BMP Plan for Project PCN ## -

_____ There are no activities for this project as listed in 401 KAR 5:037 Section 2 that require the preparation and implementation of a groundwater protection plan.

The contractor is responsible for the preparation of a plan that addresses the

401 KAR 5:037 Section 3. (3) Elements of site specific groundwater protection plan:

- (a) General information about this project is covered in the Project information;
- (b) Activities that require a groundwater protection plan have been identified above;
- (c) Practices that will protect groundwater from pollution are addressed in section C. Other control measures.
- (d) Implementation schedule – all practices required to prevent pollution of groundwater are to be in place prior to conducting the activity;
- (e) Training is required as a part of the ground water protection plan. All employees of the contractor, sub-contractor and resident engineer personnel will be trained to understand the nature and requirements of this plan as they pertain to their job function(s). Training will be accomplished within one week of employment and annually thereafter. A record of training will be maintained by the contractor with a copy provide to the resident engineer.
- (f) Areas of the project and groundwater plan activities will be inspected as part of the weekly sediment and erosion control inspections
- (g) Certification (see signature page.)

KyTC BMP Plan for Project PCN ## - ####

Sub-Contractor Certification

The following sub-contractor shall be made aware of the BMP plan and responsible for implementation of BMPs identified in this plan as follows:

Subcontractor

Name:
Address:
Address:

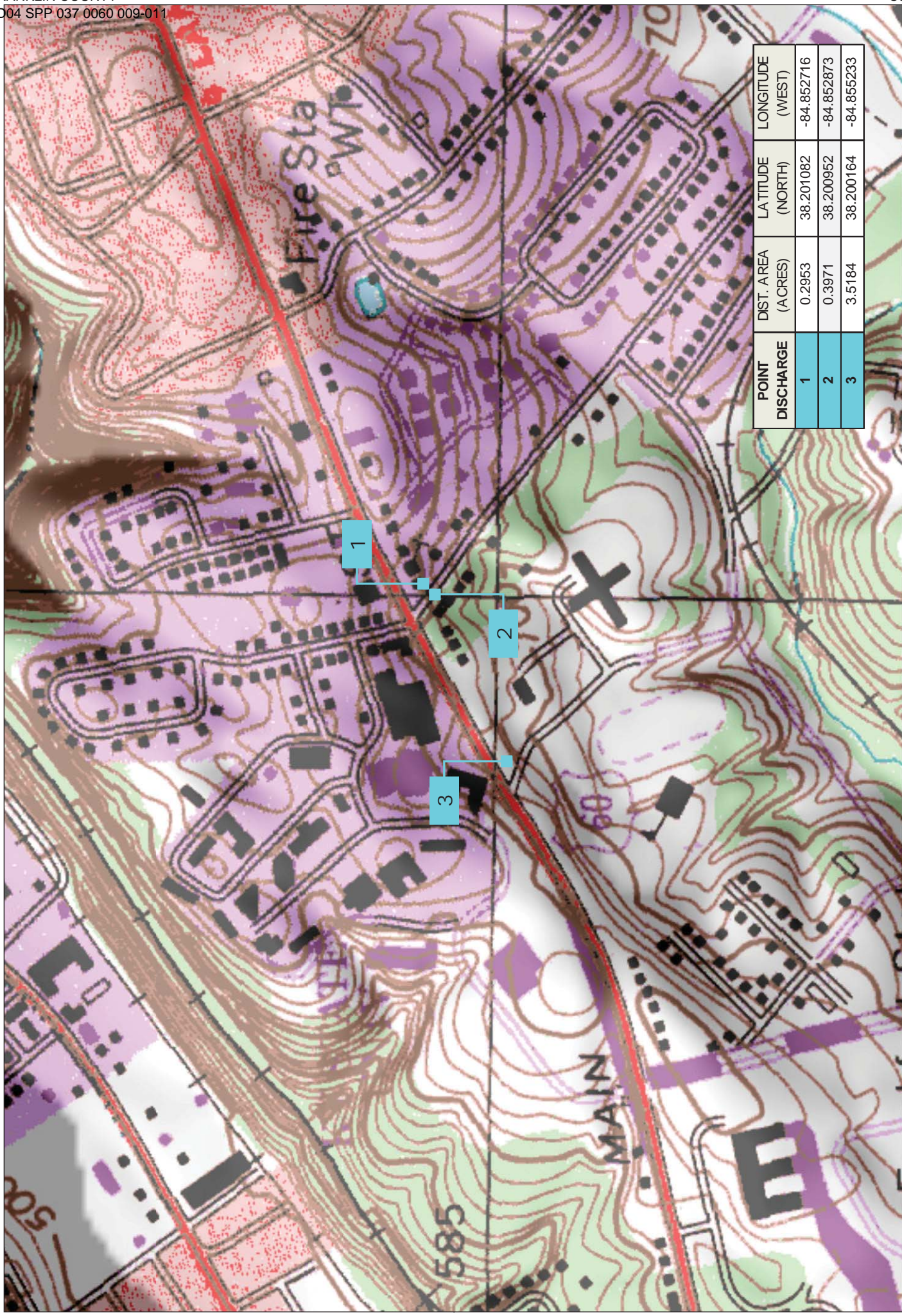
Phone:

The part of BMP plan this subcontractor is responsible to implement is:

I certify under penalty of law that I understand the terms and conditions of the general Kentucky Pollutant Discharge Elimination System permit that authorizes the storm water discharges, the BMP plan that has been developed to manage the quality of water to be discharged as a result of storm events associated with the construction site activity and management of non-storm water pollutant sources identified as part of this certification.

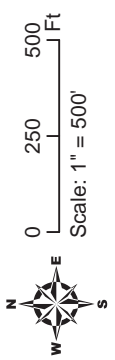
Signed _____ title _____, _____ signature
Typed or printed name¹

1. Sub Contractor Note: to be signed by a person who is the owner, a responsible corporate officer, a general partner or the proprietor or a person designated to have the authority to sign reports by such a person in accordance with 401 KAR 5:060 Section 9. This delegation shall be in writing to: Manager, KPDES Branch, Division of Water, 14 Reilly Road, Frankfort Kentucky 40601. Reference the Project Control Number (PCN) and KPDES number when one has been issued.



POINT DISCHARGE	DIST. AREA (ACRES)	LATITUDE (NORTH)	LONGITUDE (WEST)
1	0.2953	38.201082	-84.852716
2	0.3971	38.200952	-84.852873
3	3.5184	38.200164	-84.855233

Point Discharge with
USGS Topographic Map
(Frankfort East Quad)



PART II
SPECIFICATIONS AND STANDARD DRAWINGS

SPECIFICATIONS REFERENCE

Any reference in the plans or proposal to previous editions of the *Standard Specifications for Road and Bridge Construction* and *Standard Drawings* are superseded by *Standard Specifications for Road and Bridge Construction, Edition of 2012* and *Standard Drawings, Edition of 2016*.

SUPPLEMENTAL SPECIFICATIONS

The contractor shall use the Supplemental Specifications that are effective at the time of letting.
The Supplemental Specifications can be found at the following link:

<http://transportation.ky.gov/Construction/Pages/Kentucky-Standard-Specifications.aspx>

SPECIAL NOTE FOR PORTABLE CHANGEABLE MESSAGE SIGNS

This Special Note will apply when indicated on the plans or in the proposal.

1.0 DESCRIPTION. Furnish, install, operate, and maintain variable message signs at the locations shown on the plans or designated by the Engineer. Remove and retain possession of variable message signs when they are no longer needed on the project.

2.0 MATERIALS.

2.1 General. Use LED Variable Message Signs Class I, II, or III, as appropriate, from the Department's List of Approved Materials.

Unclassified signs may be submitted for approval by the Engineer. The Engineer may require a daytime and nighttime demonstration. The Engineer will make a final decision within 30 days after all required information is received.

2.2 Sign and Controls. All signs must:

- 1) Provide 3-line messages with each line being 8 characters long and at least 18 inches tall. Each character comprises 35 pixels.
- 2) Provide at least 40 preprogrammed messages available for use at any time. Provide for quick and easy change of the displayed message; editing of the message; and additions of new messages.
- 3) Provide a controller consisting of:
 - a) Keyboard or keypad.
 - b) Readout that mimics the actual sign display. (When LCD or LCD type readout is used, include backlighting and heating or otherwise arrange for viewing in cold temperatures.)
 - c) Non-volatile memory or suitable memory with battery backup for storing pre-programmed messages.
 - d) Logic circuitry to control the sequence of messages and flash rate.
- 4) Provide a serial interface that is capable of supporting complete remote control ability through land line and cellular telephone operation. Include communication software capable of immediately updating the message, providing complete sign status, and allowing message library queries and updates.
- 5) Allow a single person easily to raise the sign to a satisfactory height above the pavement during use, and lower the sign during travel.
- 6) Be Highway Orange on all exterior surfaces of the trailer, supports, and controller cabinet.
- 7) Provide operation in ambient temperatures from -30 to + 120 degrees Fahrenheit during snow, rain and other inclement weather.
- 8) Provide the driver board as part of a module. All modules are interchangeable, and have plug and socket arrangements for disconnection and reconnection. Printed circuit boards associated with driver boards have a conformable coating to protect against moisture.
- 9) Provide a sign case sealed against rain, snow, dust, insects, etc. The lens is UV stabilized clear plastic (polycarbonate, acrylic, or other approved material) angled to prevent glare.
- 10) Provide a flat black UV protected coating on the sign hardware, character PCB, and appropriate lens areas.
- 11) Provide a photocell control to provide automatic dimming.

- 12) Allow an on-off flashing sequence at an adjustable rate.
- 13) Provide a sight to aim the message.
- 14) Provide a LED display color of approximately 590 nm amber.
- 15) Provide a controller that is password protected.
- 16) Provide a security device that prevents unauthorized individuals from accessing the controller.
- 17) Provide the following 3-line messages preprogrammed and available for use when the sign unit begins operation:

/KEEP/RIGHT/=>=>=>/	/MIN/SPEED/**MPH/
/KEEP/LEFT/<<<</	/ICY/BRIDGE/AHEAD/ /ONE
/LOOSE/GRAVEL/AHEAD/	LANE/BRIDGE/AHEAD/
/RD WORK/NEXT/**MILES/	/ROUGH/ROAD/AHEAD/
/TWO WAY/TRAFFIC/AHEAD/	/MERGING/TRAFFIC/AHEAD/
/PAINT/CREW/AHEAD/	/NEXT/***/MILES/
/REDUCE/SPEED/**MPH/	/HEAVY/TRAFFIC/AHEAD/
/BRIDGE/WORK/***0 FT/	/SPEED/LIMIT/**MPH/
/MAX/SPEED/**MPH/	/BUMP/AHEAD/
/SURVEY/PARTY/AHEAD/	/TWO/WAY/TRAFFIC/

*Insert numerals as directed by the Engineer.
Add other messages during the project when required by the Engineer.

2.3 Power.

- 1) Design solar panels to yield 10 percent or greater additional charge than sign consumption. Provide direct wiring for operation of the sign or arrow board from an external power source to provide energy backup for 21 days without sunlight and an on-board system charger with the ability to recharge completely discharged batteries in 24 hours.

3.0 CONSTRUCTION. Furnish and operate the variable message signs as designated on the plans or by the Engineer. Ensure the bottom of the message panel is a minimum of 7 feet above the roadway in urban areas and 5 feet above in rural areas when operating. Use Class I, II, or III signs on roads with a speed limit less than 55 mph. Use Class I or II signs on roads with speed limits 55 mph or greater.

Maintain the sign in proper working order, including repair of any damage done by others, until completion of the project. When the sign becomes inoperative, immediately repair or replace the sign. Repetitive problems with the same unit will be cause for rejection and replacement.

Use only project related messages and messages directed by the Engineer, unnecessary messages lessen the impact of the sign. Ensure the message is displayed in either one or 2 phases with each phase having no more than 3 lines of text. When no message is needed, but it is necessary to know if the sign is operable, flash only a pixel.

When the sign is not needed, move it outside the clear zone or where the Engineer directs. Variable Message Signs are the property of the Contractor and shall be removed from the project when no longer needed. The Department will not assume ownership of these signs.

4.0 MEASUREMENT. The final quantity of Variable Message Sign will be

11

the actual number of individual signs acceptably furnished and operated during the project. The Department will not measure signs replaced due to damage or rejection.

5.0 PAYMENT. The Department will pay for the Variable Message Signs at the unit price each. The Department will not pay for signs replaced due to damage or rejection. Payment is full compensation for furnishing all materials, labor, equipment, and service necessary to, operate, move, repair, and maintain or replace the variable message signs. The Department will make payment for the completed and accepted quantities under the following:

<u>Code</u>	<u>Pay Item</u>	<u>Pay Unit</u>
02671	Portable Changeable Message Sign	Each

Effective June 15, 2012

SPECIAL NOTE FOR BARCODE LABEL ON PERMANENT SIGNS

1.0 DESCRIPTION. Install barcode label on sheeting signs. Section references herein are to the Department’s 2012 Standard Specifications for Road and Bridge Construction.

2.0 MATERIALS. The Department will provide the Contractor with a 2 inch x 1 inch foil barcode label for each permanent sheeting sign. A unique number will be assigned to each barcode label.

The Contractor shall contact the Operations and Pavement Management Branch in the Division of Maintenance at (502) 564-4556 to obtain the barcode labels.

3.0 CONSTRUCTION. Apply foil barcode label in the lower right quadrant of the sign back. Signs where the bottom edge is not parallel to the ground, the lowest corner of the sign shall serve as the location to place the barcode label. The barcode label shall be placed no less than one-inch and no more than three inches from any edge of the sign. The barcode must be placed so that the sign post does not cover the barcode label.

Barcodes shall be applied in an indoor setting with a minimum air temperature of 50°F or higher. Prior to application of the barcode label, the back of the sign must be clean and free of dust, oil, etc. If the sign is not clean, an alcohol swab shall be used to clean the area. The area must be allowed to dry prior to placement of the barcode label.

Data for each sign shall include the barcode number, MUTCD reference number, sheeting manufacturer, sheeting type, manufacture date, color of primary reflective surface, installation date, latitude and longitude using the North American Datum of 1983 (NAD83) or the State Plane Coordinates using an x and y ordinate of the installed location.

Data should be provided electronically on the TC 71-229 Sign Details Information and TC 71-230 Sign Assembly Information forms. The Contractor may choose to present the data in a different format provided that the information submitted to the Department is equivalent to the information required on the Department TC forms. The forms must be submitted in electronic format regardless of which type of form is used. The Department will not accept PDF or handwritten forms. These completed forms must be submitted to the Department prior to final inspection of the signs. The Department will not issue formal acceptance for the project until the TC 71-229 and TC-230 electronic forms are completed for all signs and sign assemblies on the project.

4.0 MEASUREMENT. The Department will measure all work required for the installation of the barcode label and all work associated with completion and submission of the sign inventory data (TC 71-229 and TC 71-230).

The installation of the permanent sign will be measured in accordance to Section 715.

5.0 PAYMENT. The Department will make payment for the completed and accepted quantities under the following:

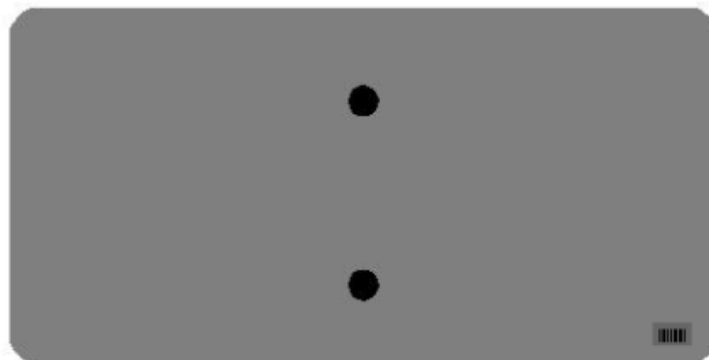
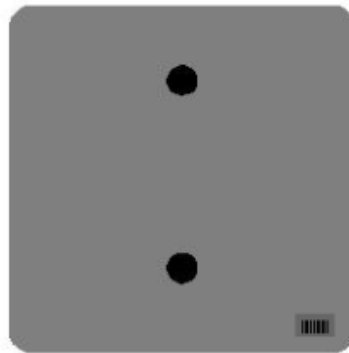
<u>Code</u>	<u>Pay Item</u>	<u>Pay Unit</u>
24631EC	Barcode Sign Inventory	Each

The Department will not make payment for this item until all barcodes are installed and sign inventory is complete on every permanent sign installed on the project. The Department will make payment for installation of the permanent sign in accordance to Section 715. The Department will consider payment as full compensation for all work required under this special note.

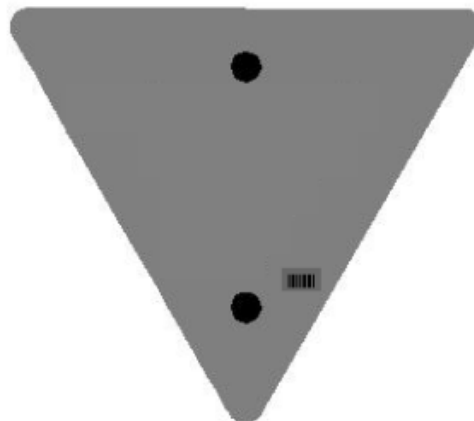
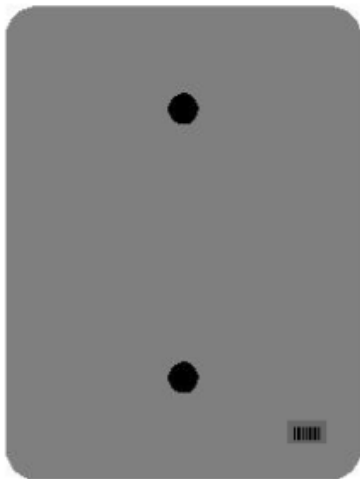
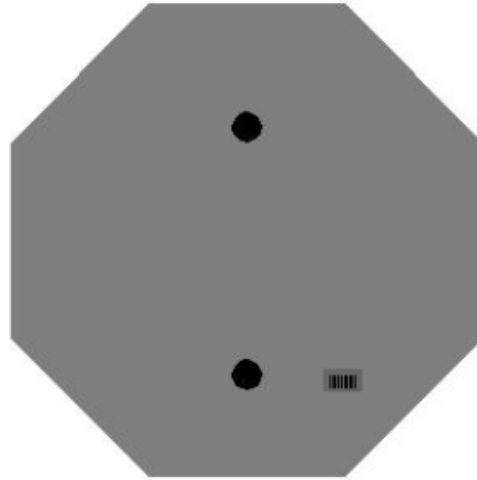
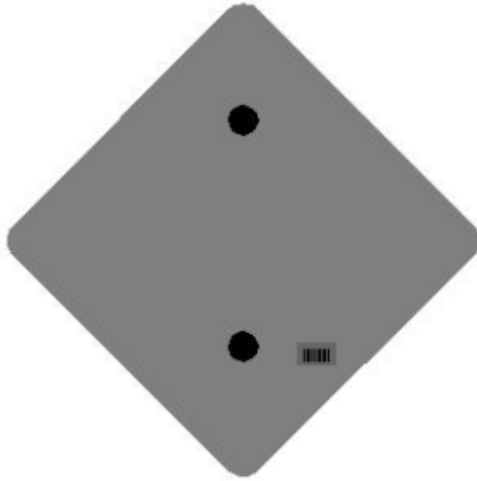
One Sign Post



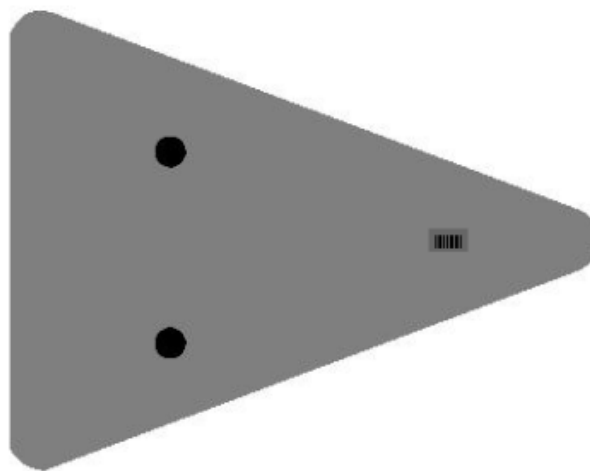
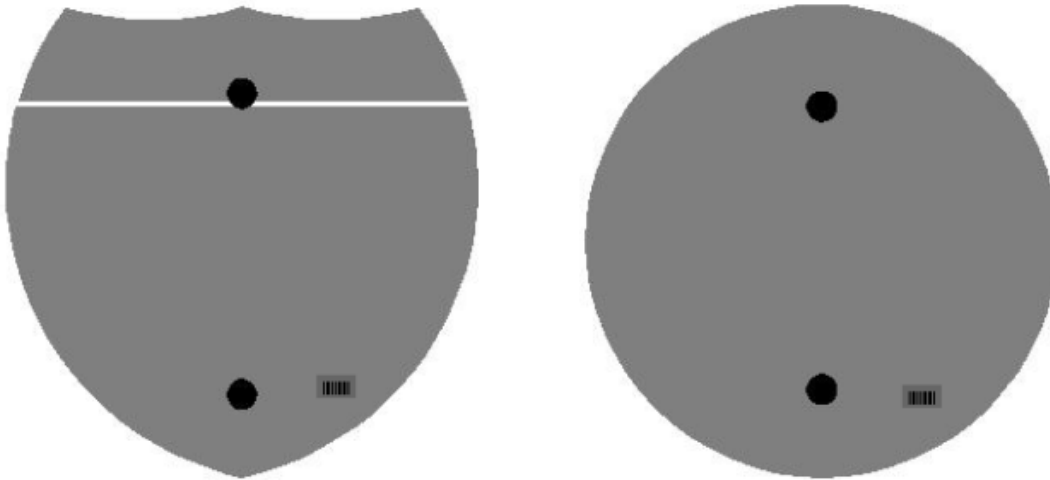
↑
2" Wide Post



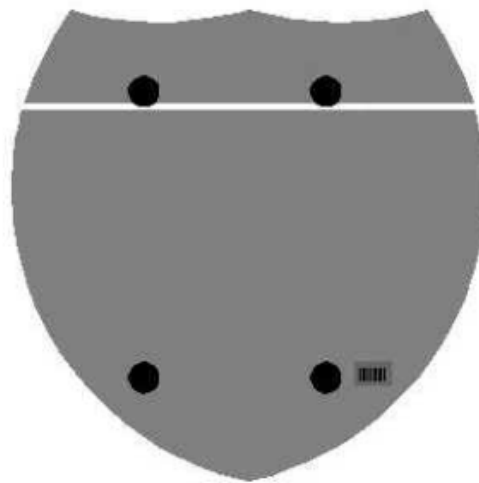
One Sign Post



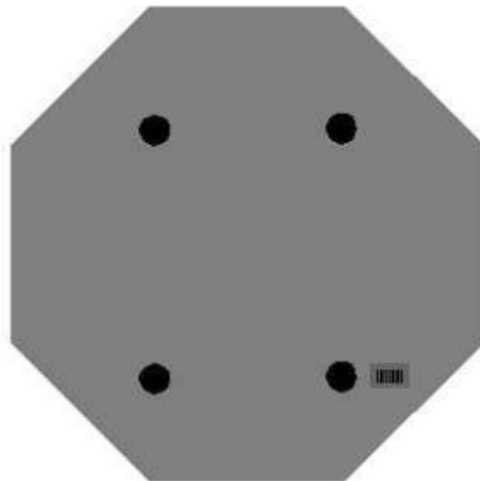
One Sign Post



Double Sign Post



Interstate
Shield

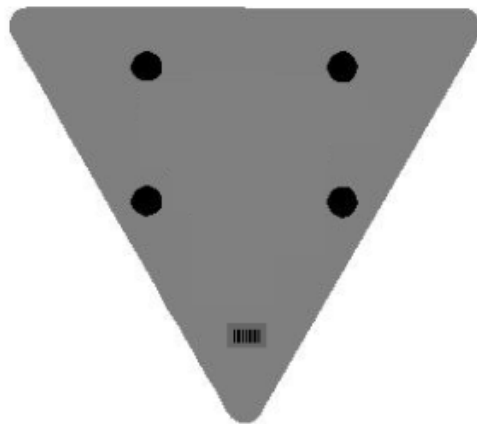


48" Stop

2 Post Signs



↑
2" Wide Post



PART III

EMPLOYMENT, WAGE AND RECORD REQUIREMENTS

**TRANSPORTATION CABINET
DEPARTMENT OF HIGHWAYS**

**LABOR AND WAGE REQUIREMENTS
APPLICABLE TO OTHER THAN FEDERAL-AID SYSTEM PROJECTS**

- I. Application
- II. Nondiscrimination of Employees (KRS 344)

I. APPLICATION

1. These contract provisions shall apply to all work performed on the contract by the contractor with his own organization and with the assistance of workmen under his immediate superintendence and to all work performed on the contract by piecework, station work or by subcontract. The contractor's organization shall be construed to include only workmen employed and paid directly by the contractor and equipment owned or rented by him, with or without operators.

2. The contractor shall insert in each of his subcontracts all of the stipulations contained in these Required Provisions and such other stipulations as may be required.

3. A breach of any of the stipulations contained in these Required Provisions may be grounds for termination of the contract.

3. If the contractor is in control of apprenticeship or other training or retraining, including on-the-job training programs, he shall not discriminate against an individual because of his race, color, religion, national origin, sex, disability or age forty (40) and over, in admission to, or employment in any program established to provide apprenticeship or other training.

4. The contractor will send to each labor union or representative of workers with which he has a collective bargaining agreement or other contract or understanding, a notice to be provided advising the said labor union or workers' representative of the contractor's commitments under this section, and shall post copies of the notice in conspicuous places available to employees and applicants for employment. The contractor will take such action with respect to any subcontract or purchase order as the administrating agency may direct as a means of enforcing such provisions, including sanctions for non-compliance.

Revised: January 25, 2017

II. NONDISCRIMINATION OF EMPLOYEES

**AN ACT OF THE KENTUCKY
GENERAL ASSEMBLY TO PREVENT
DISCRIMINATION IN EMPLOYMENT
KRS CHAPTER 344
EFFECTIVE JUNE 16, 1972**

The contract on this project, in accordance with KRS Chapter 344, provides that during the performance of this contract, the contractor agrees as follows:

1. The contractor shall not fail or refuse to hire, or shall not discharge any individual, or otherwise discriminate against an individual with respect to his compensation, terms, conditions, or privileges of employment, because of such individual's race, color, religion, national origin, sex, disability or age (forty and above); or limit, segregate, or classify his employees in any way which would deprive or tend to deprive an individual of employment opportunities or otherwise adversely affect his status as an employee, because of such individual's race, color, religion, national origin, sex, disability or age forty (40) and over. The contractor agrees to post in conspicuous places, available to employees and applicants for employment, notices to be provided setting forth the provisions of this nondiscrimination clause.

2. The contractor shall not print or publish or cause to be printed or published a notice or advertisement relating to employment by such an employer or membership in or any classification or referral for employment by the employment agency, indicating any preference, limitation, specification, or discrimination, based on race, color, religion, national origin, sex, or age forty (40) and over, or because the person is a qualified individual with a disability, except that such a notice or advertisement may indicate a preference, limitation, or specification based on religion, national origin, sex, or age forty (40) and over, or because the person is a qualified individual with a disability, when religion, national origin, sex, or age forty (40) and over, or because the person is a qualified individual with a disability, is a bona fide occupational qualification for employment.

EXECUTIVE BRANCH CODE OF ETHICS

In the 1992 regular legislative session, the General Assembly passed and Governor Brereton Jones signed Senate Bill 63 (codified as KRS 11A), the Executive Branch Code of Ethics, which states, in part:

KRS 11A.040 (7) provides:

No present or former public servant shall, within six (6) months following termination of his office or employment, accept employment, compensation, or other economic benefit from any person or business that contracts or does business with, or is regulated by, the state in matters in which he was directly involved during the last thirty-six (36) months of his tenure. This provision shall not prohibit an individual from returning to the same business, firm, occupation, or profession in which he was involved prior to taking office or beginning his term of employment, or for which he received, prior to his state employment, a professional degree or license, provided that, for a period of six (6) months, he personally refrains from working on any matter in which he was directly involved during the last thirty-six (36) months of his tenure in state government. This subsection shall not prohibit the performance of ministerial functions, including but not limited to filing tax returns, filing applications for permits or licenses, or filing incorporation papers, nor shall it prohibit the former officer or public servant from receiving public funds disbursed through entitlement programs.

KRS 11A.040 (9) states:

A former public servant shall not represent a person or business before a state agency in a matter in which the former public servant was directly involved during the last thirty-six (36) months of his tenure, for a period of one (1) year after the latter of:

- a) The date of leaving office or termination of employment; or
- b) The date the term of office expires to which the public servant was elected.

This law is intended to promote public confidence in the integrity of state government and to declare as public policy the idea that state employees should view their work as a public trust and not as a way to obtain private benefits.

If you have worked for the executive branch of state government within the past six months, you may be subject to the law's prohibitions. The law's applicability may be different if you hold elected office or are contemplating representation of another before a state agency.

Also, if you are affiliated with a firm which does business with the state and which employs former state executive-branch employees, you should be aware that the law may apply to them.

In case of doubt, the law permits you to request an advisory opinion from the Executive Branch Ethics Commission, 3 Fountain Place, Frankfort, Kentucky 40601; telephone (502) 564-7954.

Revised: January 27, 2017

Kentucky Equal Employment Opportunity Act of 1978

The requirements of the Kentucky Equal Employment Opportunity Act of 1978 (KRS 45.560-45.640) shall apply to this Contract. The apparent low Bidder will be required to submit EEO forms to the Division of Construction Procurement, which will then forward to the Finance and Administration Cabinet for review and approval. No award will become effective until all forms are submitted and EEO/CC has certified compliance. The required EEO forms are as follows:

- EEO-1: Employer Information Report
- Affidavit of Intent to Comply
- Employee Data Sheet
- Subcontractor Report

These forms are available on the Finance and Administration's web page under ***Vendor Information, Standard Attachments and General Terms*** at the following address:
<https://www.eProcurement.ky.gov>.

Bidders currently certified as being in compliance by the Finance and Administration Cabinet may submit a copy of their approval letter in lieu of the referenced EEO forms.

For questions or assistance please contact the Finance and Administration Cabinet by email at **finance.contractcompliance@ky.gov** or by phone at 502-564-2874.

EMPLOYEE RIGHTS UNDER THE FAIR LABOR STANDARDS ACT

THE UNITED STATES DEPARTMENT OF LABOR WAGE AND HOUR DIVISION

FEDERAL MINIMUM WAGE

\$7.25

 PER HOUR

BEGINNING JULY 24, 2009

OVERTIME PAY

At least 1½ times your regular rate of pay for all hours worked over 40 in a workweek.

CHILD LABOR

An employee must be at least **16** years old to work in most non-farm jobs and at least **18** to work in non-farm jobs declared hazardous by the Secretary of Labor.

Youths **14** and **15** years old may work outside school hours in various non-manufacturing, non-mining, non-hazardous jobs under the following conditions:

No more than

- **3** hours on a school day or **18** hours in a school week;
- **8** hours on a non-school day or **40** hours in a non-school week.

Also, work may not begin before **7 a.m.** or end after **7 p.m.**, except from June 1 through Labor Day, when evening hours are extended to **9 p.m.** Different rules apply in agricultural employment.

Contract ID: 171254
Page 73 of 79

TIP CREDIT

Employers of “tipped employees” must pay a cash wage of at least \$2.13 per hour if they claim a tip credit against their minimum wage obligation. If an employee's tips combined with the employer's cash wage of at least \$2.13 per hour do not equal the minimum hourly wage, the employer must make up the difference. Certain other conditions must also be met.

ENFORCEMENT

The Department of Labor may recover back wages either administratively or through court action, for the employees that have been underpaid in violation of the law. Violations may result in civil or criminal action.

Employers may be assessed civil money penalties of up to \$1,100 for each willful or repeated violation of the minimum wage or overtime pay provisions of the law and up to \$11,000 for each employee who is the subject of a violation of the Act's child labor provisions. In addition, a civil money penalty of up to \$50,000 may be assessed for each child labor violation that causes the death or serious injury of any minor employee, and such assessments may be doubled, up to \$100,000, when the violations are determined to be willful or repeated. The law also prohibits discriminating against or discharging workers who file a complaint or participate in any proceeding under the Act.

ADDITIONAL INFORMATION

- Certain occupations and establishments are exempt from the minimum wage and/or overtime pay provisions.
- Special provisions apply to workers in American Samoa and the Commonwealth of the Northern Mariana Islands.
- Some state laws provide greater employee protections; employers must comply with both.
- The law requires employers to display this poster where employees can readily see it.
- Employees under 20 years of age may be paid \$4.25 per hour during their first 90 consecutive calendar days of employment with an employer.
- Certain full-time students, student learners, apprentices, and workers with disabilities may be paid less than the minimum wage under special certificates issued by the Department of Labor.

For additional information:



1-866-4-USWAGE

(1-866-487-9243)

TTY: 1-877-889-5627



WWW.WAGEHOUR.DOL.GOV

U.S. Department of Labor | Wage and Hour Division

PART IV
INSURANCE

INSURANCE

The Contractor shall procure and maintain the following insurance in addition to the insurance required by law:

- 1) Commercial General Liability-Occurrence form – not less than \$2,000,000 General aggregate, \$2,000,000 Products & Completed Aggregate, \$1,000,000 Personal & Advertising, \$1,000,000 each occurrence.
- 2) Automobile Liability- \$1,000,000 per accident
- 3) Employers Liability:
 - a) \$100,000 Each Accident Bodily Injury
 - b) \$500,000 Policy limit Bodily Injury by Disease
 - c) \$100,000 Each Employee Bodily Injury by Disease
- 4) The insurance required above must be evidenced by a Certificate of Insurance and this Certificate of Insurance must contain one of the following statements:
 - a) "policy contains no deductible clauses."
 - b) "policy contains _____ (amount) deductible property damage clause but company will pay claim and collect the deductible from the insured."
- 5) KENTUCKY WORKMEN'S COMPENSATION INSURANCE. The contractor shall furnish evidence of coverage of all his employees or give evidence of self-insurance by submitting a copy of a certificate issued by the Workmen's Compensation Board.

The cost of insurance is incidental to all contract items. All subcontractors must meet the same minimum insurance requirements.

PART V
BID ITEMS

PROPOSAL BID ITEMS

171254

Page 1 of 3

Report Date 11/13/17

Section: 0001 - PAVING

LINE	BID CODE	ALT	DESCRIPTION	QUANTITY	UNIT	UNIT PRIC	FP	AMOUNT
0010	00003		CRUSHED STONE BASE	2,676.00	TON		\$	
0020	00190		LEVELING & WEDGING PG64-22	242.00	TON		\$	
0030	00212		CL2 ASPH BASE 1.00D PG64-22	1,818.00	TON		\$	
0040	00301		CL2 ASPH SURF 0.38D PG64-22	752.00	TON		\$	
0050	02676		MOBILIZATION FOR MILL & TEXT	1.00	LS		\$	
0060	02677		ASPHALT PAVE MILLING & TEXTURING	51.00	TON		\$	

Section: 0002 - ROADWAY

LINE	BID CODE	ALT	DESCRIPTION	QUANTITY	UNIT	UNIT PRIC	FP	AMOUNT
0070	00080		CRUSHED AGGREGATE SIZE NO 23	552.00	TON		\$	
0080	01000		PERFORATED PIPE-4 IN	84.00	LF		\$	
0090	01010		NON-PERFORATED PIPE-4 IN	31.00	LF		\$	
0100	01011		NON-PERFORATED PIPE-6 IN	30.00	LF		\$	
0110	01740		CORED HOLE DRAINAGE BOX CON-4 IN	2.00	EACH		\$	
0120	01810		STANDARD CURB AND GUTTER	1,531.00	LF		\$	
0130	01811		STANDARD CURB AND GUTTER MOD	1,127.00	LF		\$	
0140	01876		STANDARD HEADER CURB MOD	634.00	LF		\$	
0150	01904		REMOVE CURB	170.00	LF		\$	
0160	02013		BARRICADE-TYPE II	5.00	EACH		\$	
0170	02014		BARRICADE-TYPE III	7.00	EACH		\$	
0180	02091		REMOVE PAVEMENT	517.00	SQYD		\$	
0190	02101		CEM CONC ENT PAVEMENT-8 IN	24.00	SQYD		\$	
0200	02200		ROADWAY EXCAVATION	3,798.00	CUYD		\$	
0210	02203		STRUCTURE EXCAV-UNCLASSIFIED	492.00	CUYD		\$	
0220	02242		WATER (FOR DUST CONTROL)	.70	MGAL		\$	
0230	02429		RIGHT-OF-WAY MONUMENT TYPE 1	14.00	EACH		\$	
0240	02432		WITNESS POST	9.00	EACH		\$	
0250	02545		CLEARING AND GRUBBING (APPROXIMATELY 1.0 ACRE)	1.00	LS		\$	
0260	02551		CONCRETE-CLASS A FOR STEPS	2.00	CUYD		\$	
0270	02555		CONCRETE-CLASS B	54.00	CUYD		\$	
0280	02562		TEMPORARY SIGNS	69.00	SQFT		\$	
0290	02585		EDGE KEY	251.00	LF		\$	
0300	02599		FABRIC-GEOTEXTILE TYPE IV	4,671.00	SQYD		\$	
0310	02611		HANDRAIL-TYPE A-1	175.00	LF		\$	
0320	02650		MAINTAIN & CONTROL TRAFFIC	1.00	LS		\$	
0330	02651		DIVERSIONS (BY-PASS DETOURS)	1.00	LS		\$	
0340	02671		PORTABLE CHANGEABLE MESSAGE SIGN	4.00	EACH		\$	
0350	02690		SAFELOADING	9.80	CUYD		\$	
0360	02701		TEMP SILT FENCE	906.00	LF		\$	
0370	02703		SILT TRAP TYPE A	2.00	EACH		\$	
0380	02705		SILT TRAP TYPE C	19.00	EACH		\$	
0390	02706		CLEAN SILT TRAP TYPE A	2.00	EACH		\$	
0400	02708		CLEAN SILT TRAP TYPE C	19.00	EACH		\$	
0410	02720		SIDEWALK-4 IN CONCRETE	959.00	SQYD		\$	

PROPOSAL BID ITEMS

171254

Page 2 of 3

Report Date 11/13/17

LINE	BID CODE	ALT	DESCRIPTION	QUANTITY	UNIT	UNIT PRIC	FP	AMOUNT
0420	02721		REMOVE CONCRETE SIDEWALK	86.00	SQYD		\$	
0430	02726		STAKING	1.00	LS		\$	
0440	02775		ARROW PANEL	2.00	EACH		\$	
0450	03289		SIDEWALK RAMP TYPE 3	11.00	EACH		\$	
0460	05950		EROSION CONTROL BLANKET	733.00	SQYD		\$	
0470	05963		INITIAL FERTILIZER	.10	TON		\$	
0480	05964		20-10-10 FERTILIZER	.20	TON		\$	
0490	05985		SEEDING AND PROTECTION	3,056.00	SQYD		\$	
0500	05990		SODDING	2,322.00	SQYD		\$	
0510	05992		AGRICULTURAL LIMESTONE	1.90	TON		\$	
0520	06510		PAVE STRIPING-TEMP PAINT-4 IN	3,328.00	LF		\$	
0530	06514		PAVE STRIPING-PERM PAINT-4 IN	5,953.00	LF		\$	
0540	06565		PAVE MARKING-THERMO X-WALK-6 IN	647.00	LF		\$	
0550	06568		PAVE MARKING-THERMO STOP BAR-24IN	163.00	LF		\$	
0560	06574		PAVE MARKING-THERMO CURV ARROW	7.00	EACH		\$	
0570	06575		PAVE MARKING-THERMO COMB ARROW	3.00	EACH		\$	
0580	08150		STEEL REINFORCEMENT	646.00	LB		\$	
0590	14018		W FIRE HYDRANT ADJUST	2.00	EACH		\$	
0600	20430ED		SAW CUT	860.00	LF		\$	
0610	21289ED		LONGITUDINAL EDGE KEY	563.00	LF		\$	
0620	22664EN		WATER BLASTING EXISTING STRIPE	260.00	LF		\$	
0630	23158ES505		DETECTABLE WARNINGS	231.00	SQFT		\$	
0640	23836EC		RELOCATE LIGHT POLE	2.00	EACH		\$	
0650	24540		R/W MONUMENT TYPE 3	17.00	EACH		\$	
0660	24541		R/W MONUMENT TYPE 3A	5.00	EACH		\$	
0670	24814EC		PIPELINE INSPECTION	1,181.00	LF		\$	

Section: 0003 - DRAINAGE

LINE	BID CODE	ALT	DESCRIPTION	QUANTITY	UNIT	UNIT PRIC	FP	AMOUNT
0680	00521		STORM SEWER PIPE-15 IN	369.00	LF		\$	
0690	00522		STORM SEWER PIPE-18 IN	578.00	LF		\$	
0700	00524		STORM SEWER PIPE-24 IN	691.00	LF		\$	
0710	01456		CURB BOX INLET TYPE A	9.00	EACH		\$	
0720	01458		CURB BOX INLET TYPE A T	1.00	EACH		\$	
0730	01459		CURB BOX INLET TYPE A MOD	2.00	EACH		\$	
0740	01487		CURB BOX INLET TYPE F	5.00	EACH		\$	
0750	01544		DROP BOX INLET TYPE 11	1.00	EACH		\$	
0760	01577		DROP BOX INLET TYPE 14	1.00	EACH		\$	
0770	01584		CAP DROP BOX INLET	1.00	EACH		\$	
0780	01709		ADJUST CATCH BASIN	2.00	EACH		\$	
0790	01756		MANHOLE TYPE A	2.00	EACH		\$	
0800	02600		FABRIC GEOTEXTILE TY IV FOR PIPE	2,421.00	SQYD	\$2.00	\$	\$4,842.00
0810	15099		S MANHOLE TAP EXISTING	1.00	EACH		\$	

Section: 0004 - SIGNING

LINE	BID CODE	ALT	DESCRIPTION	QUANTITY	UNIT	UNIT PRIC	FP	AMOUNT
------	----------	-----	-------------	----------	------	-----------	----	--------

PROPOSAL BID ITEMS

171254

Page 3 of 3

Report Date 11/13/17

LINE	BID CODE	ALT	DESCRIPTION	QUANTITY	UNIT	UNIT PRIC	FP	AMOUNT
0820	06406		SBM ALUM SHEET SIGNS .080 IN	38.80	SQFT		\$	
0830	06407		SBM ALUM SHEET SIGNS .125 IN	57.20	SQFT		\$	
0840	06410		STEEL POST TYPE 1	125.00	LF		\$	
0850	24631EC		BARCODE SIGN INVENTORY	23.00	EACH		\$	

Section: 0005 - SIGNALIZATION

LINE	BID CODE	ALT	DESCRIPTION	QUANTITY	UNIT	UNIT PRIC	FP	AMOUNT
0860	04792		CONDUIT-1 IN	40.00	LF		\$	
0870	04811		ELECTRICAL JUNCTION BOX TYPE B	4.00	EACH		\$	
0880	04820		TRENCHING AND BACKFILLING	135.00	LF		\$	
0890	04830		LOOP WIRE	1,925.00	LF		\$	
0900	04844		CABLE-NO. 14/5C	2,775.00	LF		\$	
0910	04850		CABLE-NO. 14/1 PAIR	1,310.00	LF		\$	
0920	04885		MESSENGER-10800 LB	450.00	LF		\$	
0930	04895		LOOP SAW SLOT AND FILL	815.00	LF		\$	
0940	04931		INSTALL CONTROLLER TYPE 170	1.00	EACH		\$	
0950	04932		INSTALL STEEL STRAIN POLE	4.00	EACH		\$	
0960	20093NS835		INSTALL PEDESTRIAN HEAD-LED	8.00	EACH		\$	
0970	20094ES835		TEMP RELOCATION OF SIGNAL HEAD	16.00	EACH		\$	
0980	20188NS835		INSTALL LED SIGNAL-3 SECTION	10.00	EACH		\$	
0990	20390NS835		INSTALL COORDINATING UNIT	1.00	EACH		\$	
1000	21743NN		INSTALL PEDESTRIAN DETECTOR	8.00	EACH		\$	
1010	23157EN		TRAFFIC SIGNAL POLE BASE	19.00	CUYD		\$	
1020	23222EC		INSTALL SIGNAL PEDESTAL	3.00	EACH		\$	
1030	24900EC		PVC CONDUIT-1 1/4 IN-SCHEDULE 80	140.00	LF		\$	
1040	24901EC		PVC CONDUIT-2 IN-SCHEDULE 80	80.00	LF		\$	
1050	24955ED		REMOVE SIGNAL EQUIPMENT	1.00	EACH		\$	

Section: 0006 - MISCELLANEOUS - CIP RETAINING WALL

LINE	BID CODE	ALT	DESCRIPTION	QUANTITY	UNIT	UNIT PRIC	FP	AMOUNT
1060	02231		STRUCTURE GRANULAR BACKFILL	702.00	CUYD		\$	
1070	08001		STRUCTURE EXCAVATION-COMMON	115.00	CUYD		\$	
1080	08002		STRUCTURE EXCAV-SOLID ROCK	76.00	CUYD		\$	
1090	08100		CONCRETE-CLASS A	147.10	CUYD		\$	
1100	08150		STEEL REINFORCEMENT	24,496.00	LB		\$	

Section: 0007 - DEMOBILIZATION &/OR MOBILIZATION

LINE	BID CODE	ALT	DESCRIPTION	QUANTITY	UNIT	UNIT PRIC	FP	AMOUNT
1110	02569		DEMOBILIZATION	1.00	LS		\$	