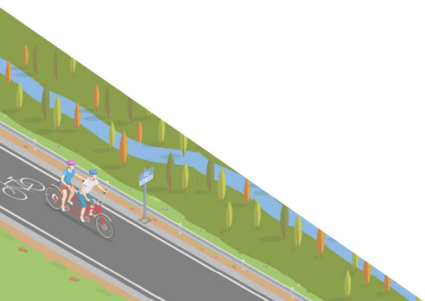


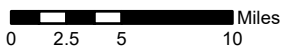
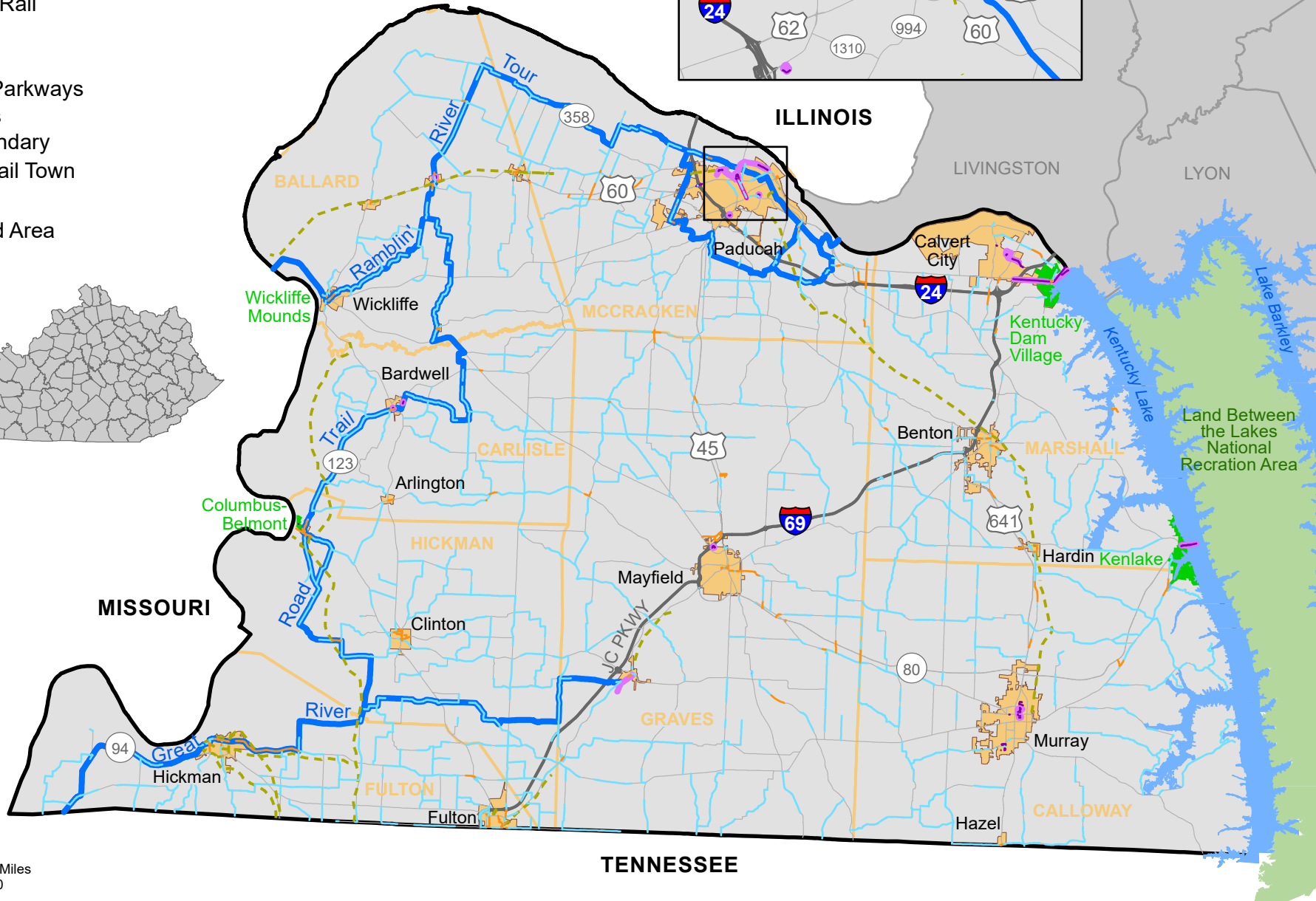
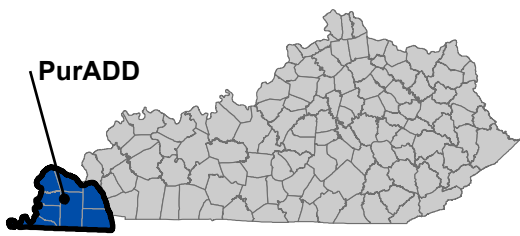
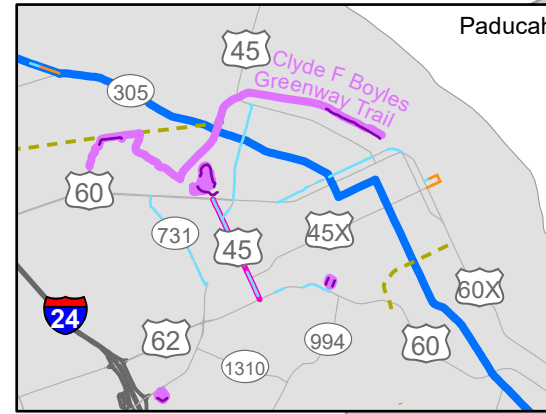
Appendix A:

Infrastructure Maps by Area Development District

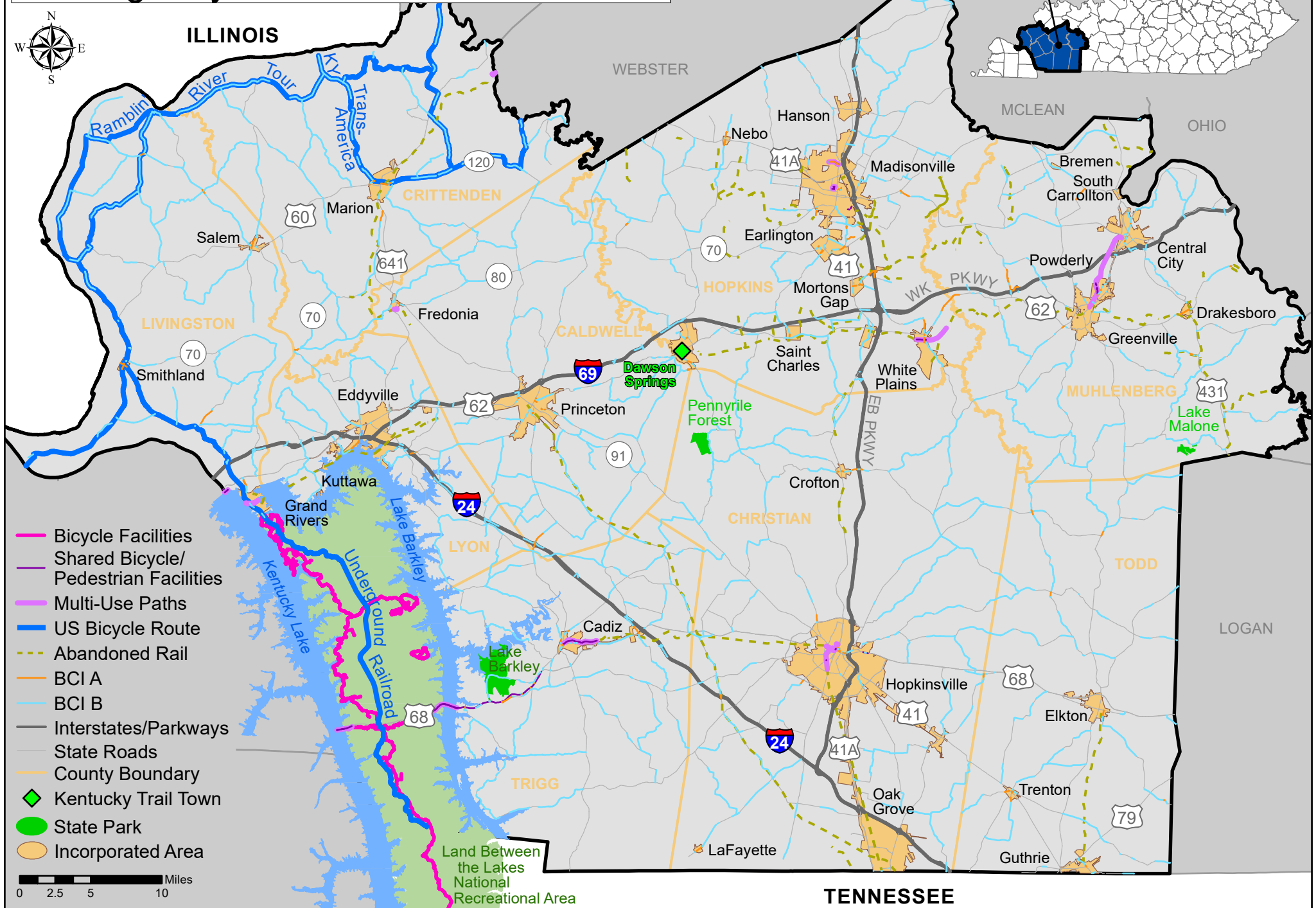


Purchase Area Development District Existing Bicycle Infrastructure

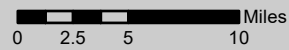
- Bicycle Facilities
- Shared Bicycle/Pedestrian Facilities
- Multi-Use Paths
- US Bicycle Route
- - - Abandoned Rail
- BCI A
- BCI B
- Interstates/Parkways
- State Roads
- County Boundary
- ◆ Kentucky Trail Town
- State Park
- Incorporated Area



Pennyrile Area Development District Existing Bicycle Infrastructure



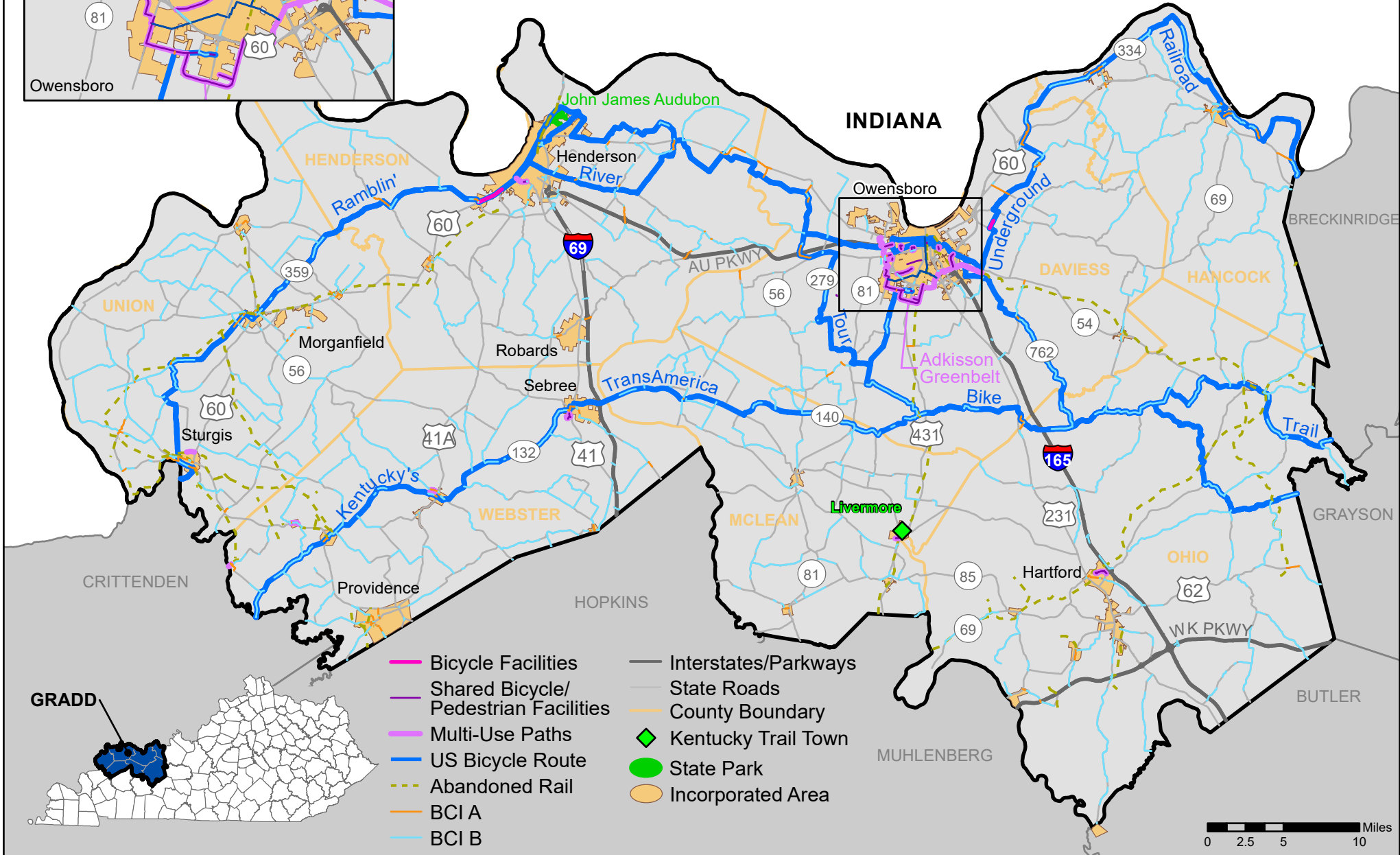
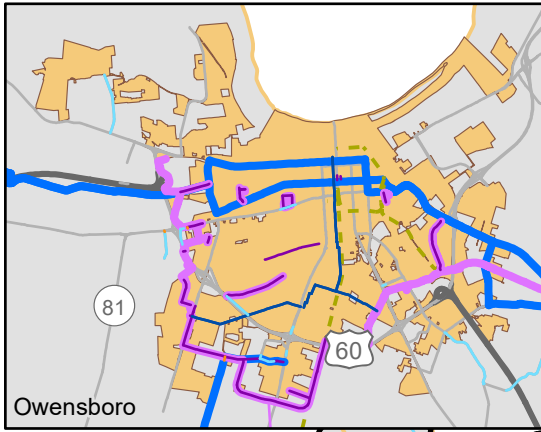
- Bicycle Facilities
- Shared Bicycle/
Pedestrian Facilities
- Multi-Use Paths
- US Bicycle Route
- - - Abandoned Rail
- BCI A
- BCI B
- Interstates/Parkways
- State Roads
- County Boundary
- ◆ Kentucky Trail Town
- State Park
- Incorporated Area



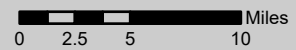
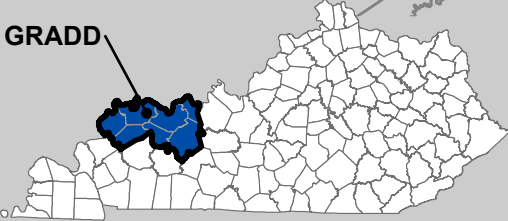
Land Between
the Lakes
National
Recreational Area

TENNESSEE

Green River Area Development District Existing Bicycle Infrastructure
















- Bicycle Facilities
- Shared Bicycle/ Pedestrian Facilities
- Multi-Use Paths
- US Bicycle Route
- - - Abandoned Rail
- BCI A
- BCI B
- Interstates/Parkways
- State Roads
- County Boundary
- ◆ Kentucky Trail Town
- State Park
- Incorporated Area

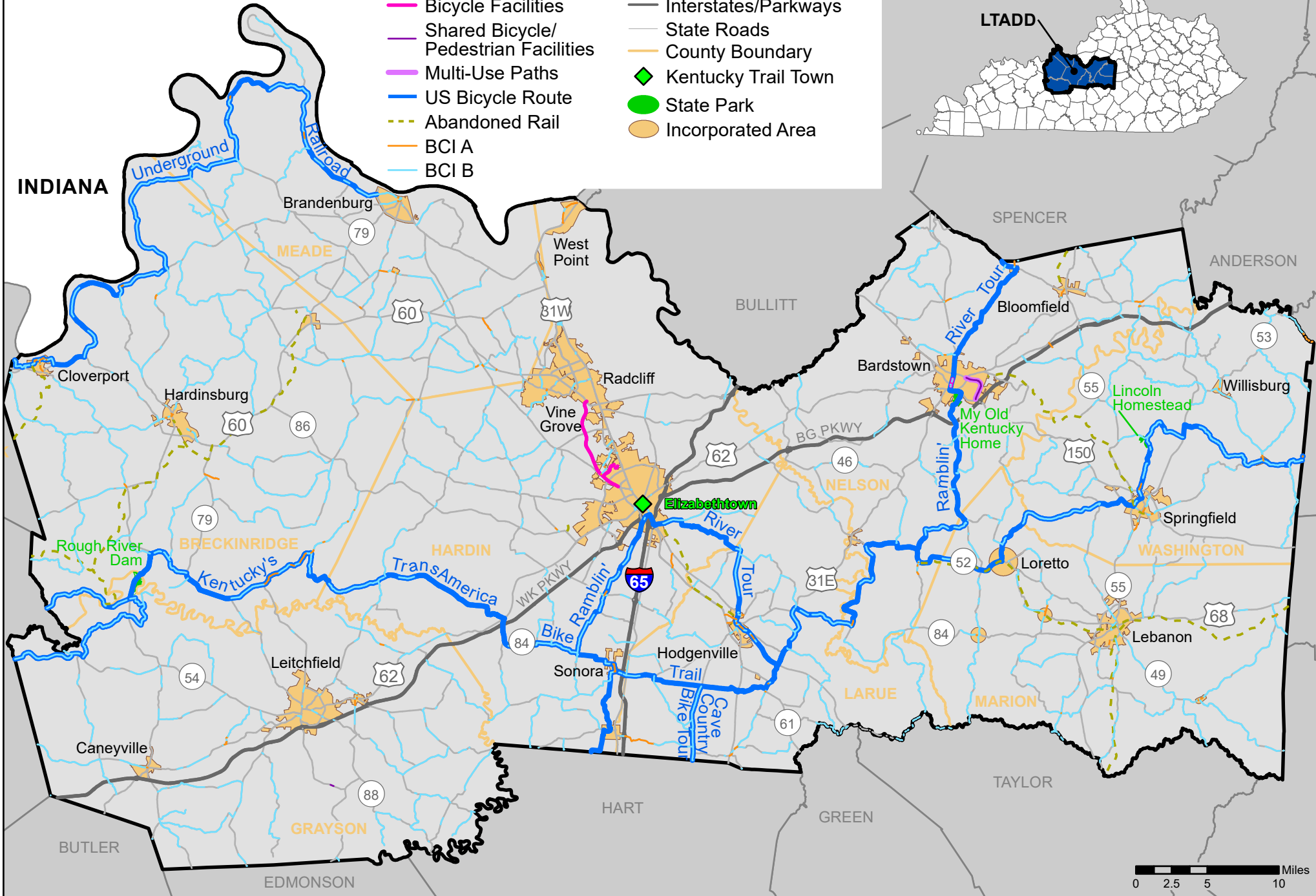
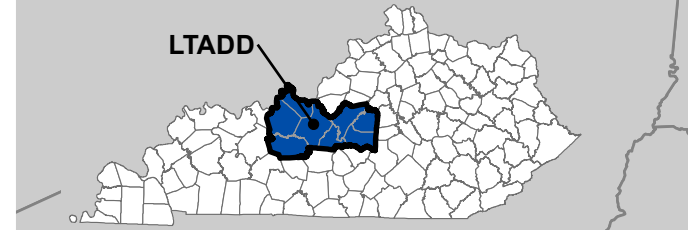


Lincoln Trail Area Development District

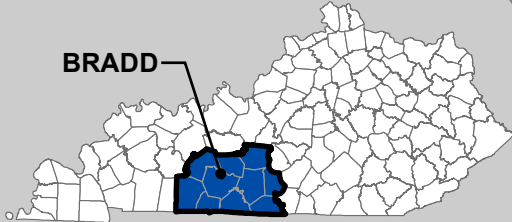
Existing Bicycle Infrastructure



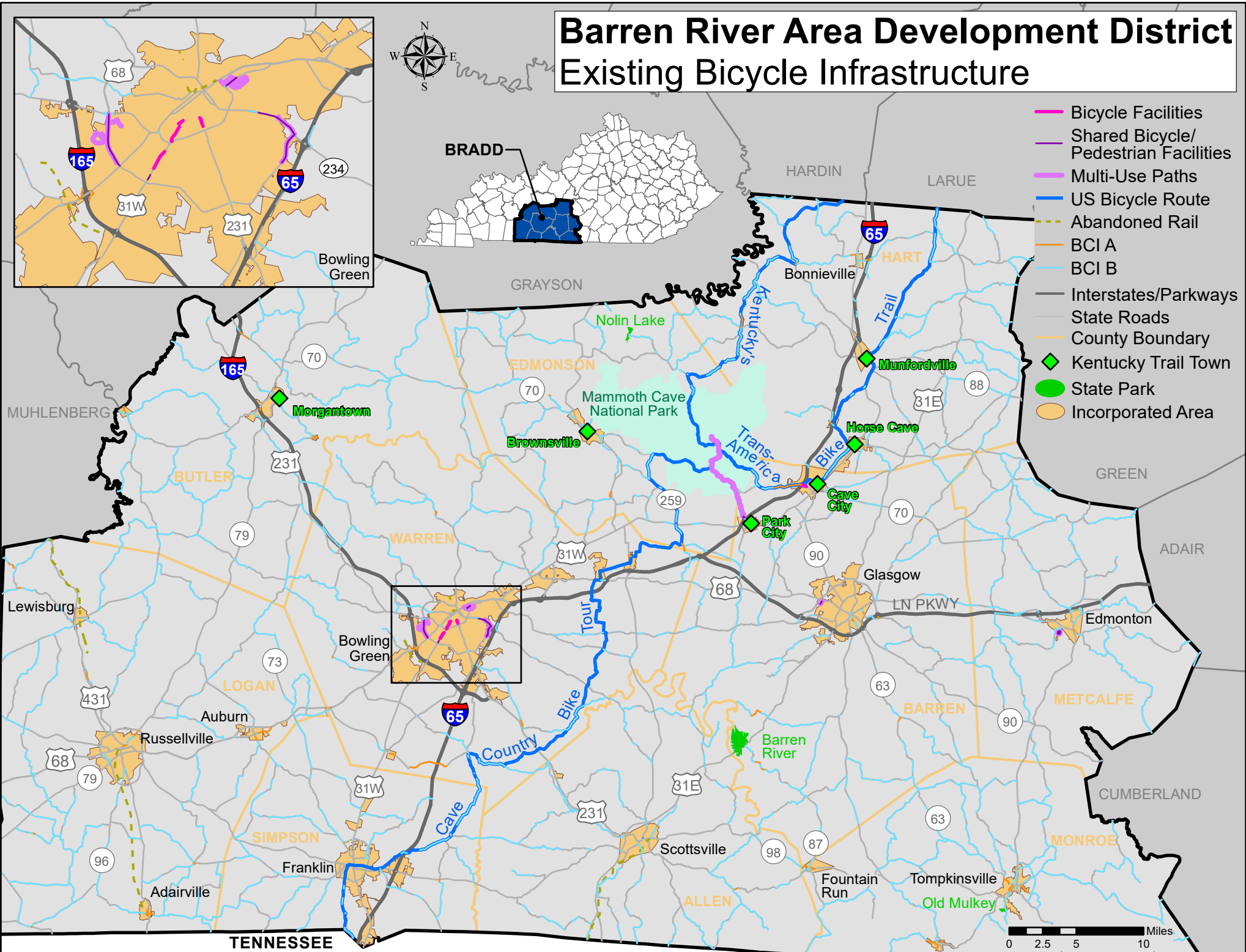
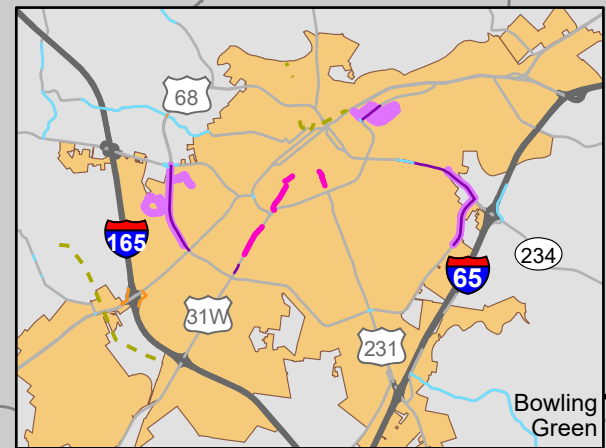
- | | |
|--|---|
|  Bicycle Facilities |  Interstates/Parkways |
|  Shared Bicycle/ Pedestrian Facilities |  State Roads |
|  Multi-Use Paths |  County Boundary |
|  US Bicycle Route |  Kentucky Trail Town |
|  Abandoned Rail |  State Park |
|  BCI A |  Incorporated Area |
|  BCI B | |



Barren River Area Development District Existing Bicycle Infrastructure



- Bicycle Facilities
- Shared Bicycle/ Pedestrian Facilities
- Multi-Use Paths
- US Bicycle Route
- - - Abandoned Rail
- BCI A
- BCI B
- Interstates/Parkways
- State Roads
- County Boundary
- ◆ Kentucky Trail Town
- State Park
- Incorporated Area

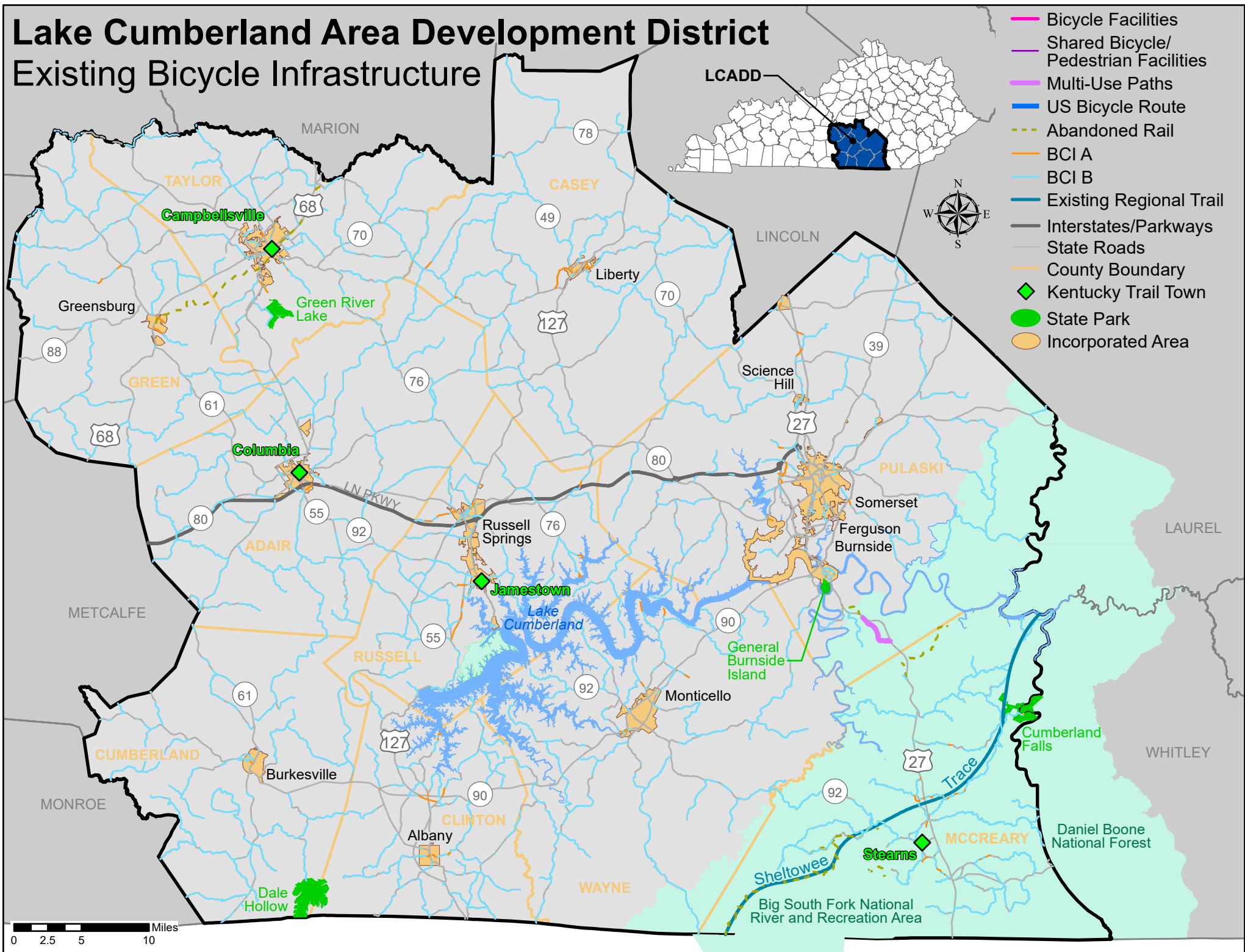


TENNESSEE

0 2.5 5 10 Miles

Lake Cumberland Area Development District

Existing Bicycle Infrastructure

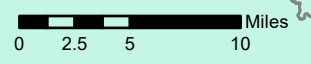
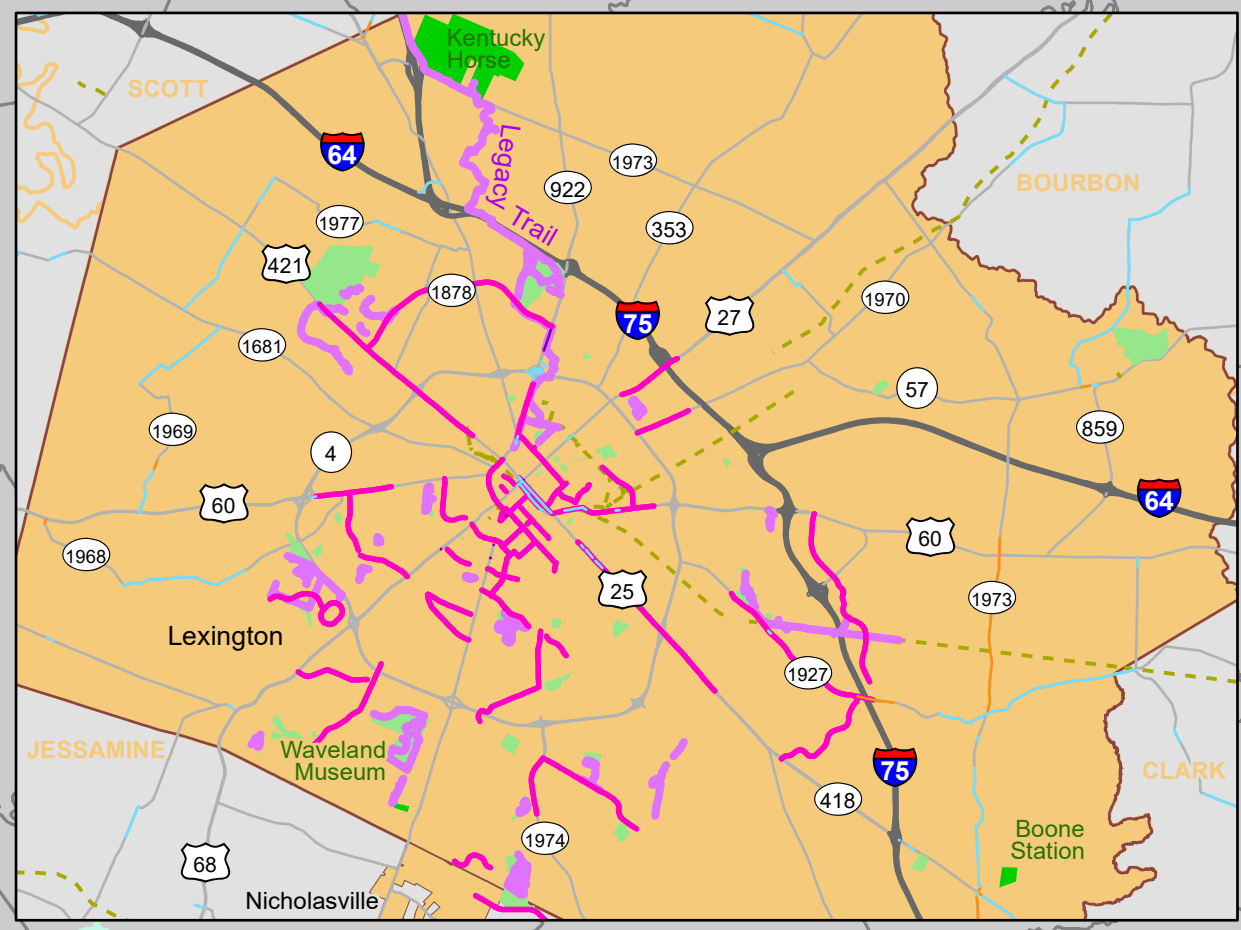
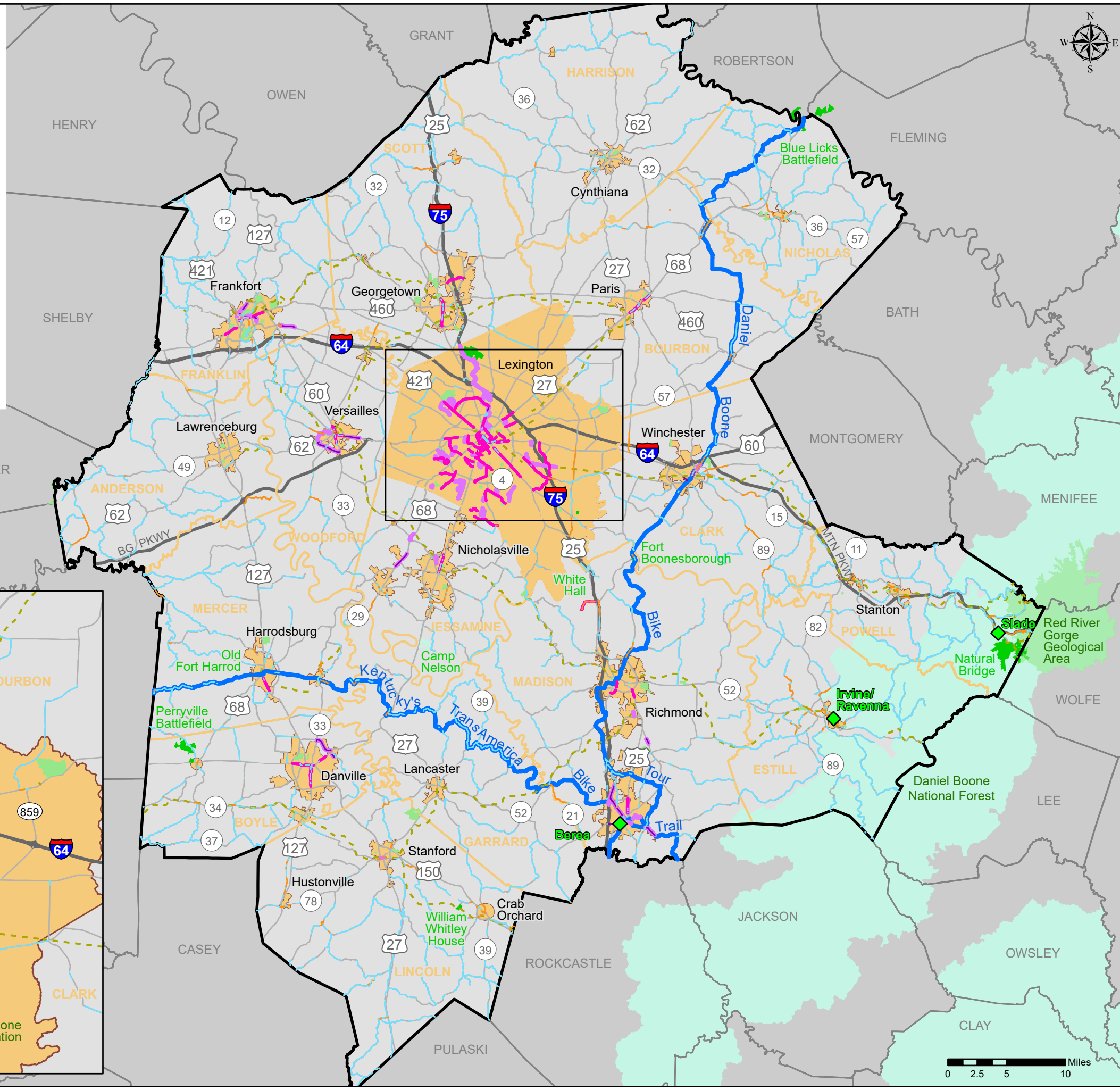
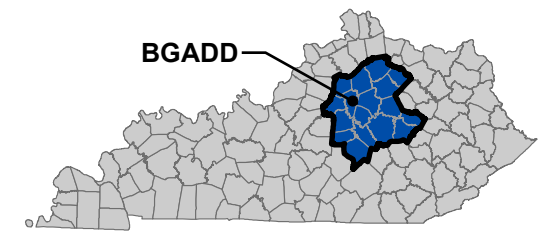


- Bicycle Facilities
- Shared Bicycle/ Pedestrian Facilities
- Multi-Use Paths
- US Bicycle Route
- Abandoned Rail
- BCI A
- BCI B
- Existing Regional Trail
- Interstates/Parkways
- State Roads
- County Boundary
- ◆ Kentucky Trail Town
- State Park
- Incorporated Area

0 2.5 5 10 Miles

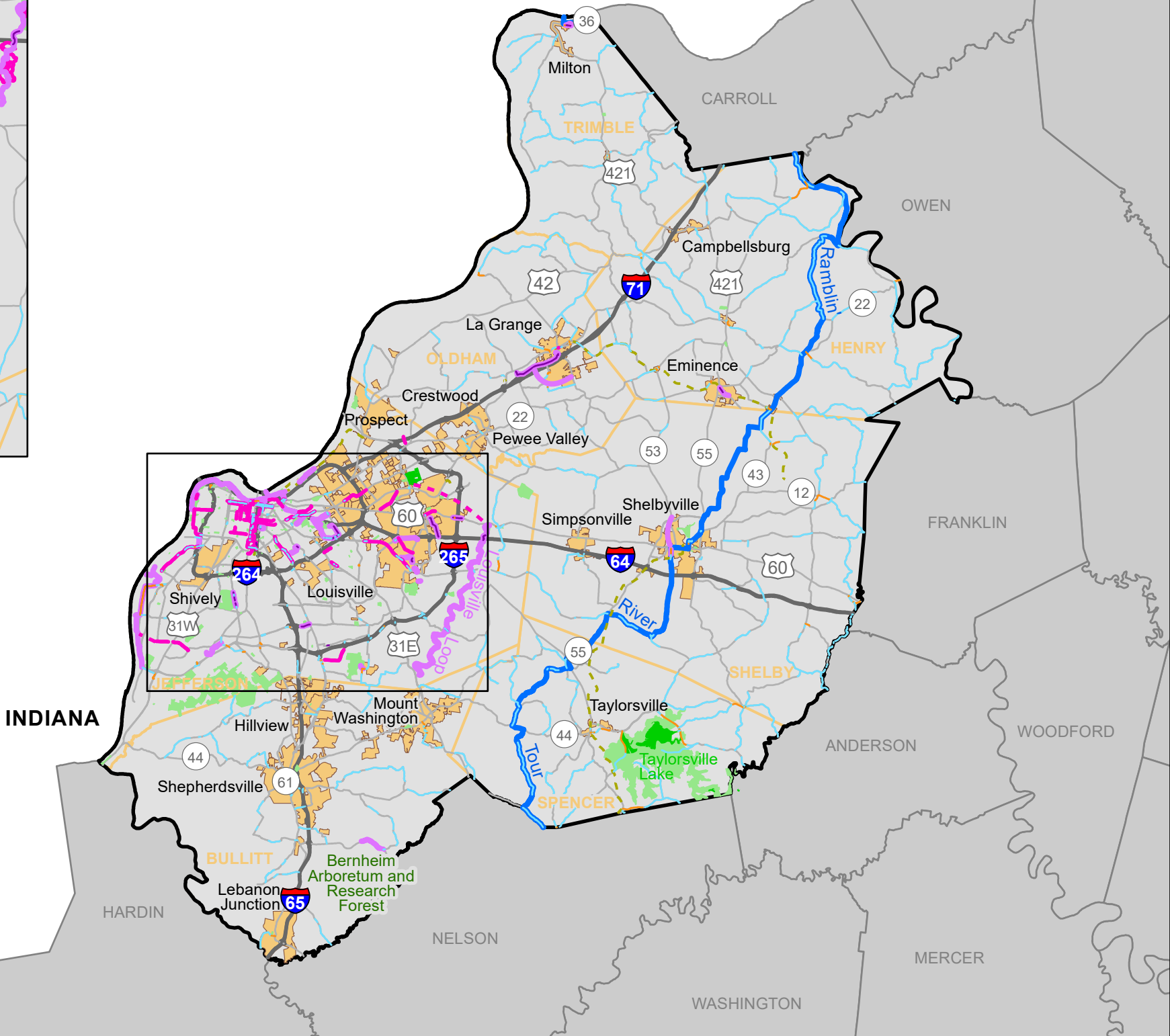
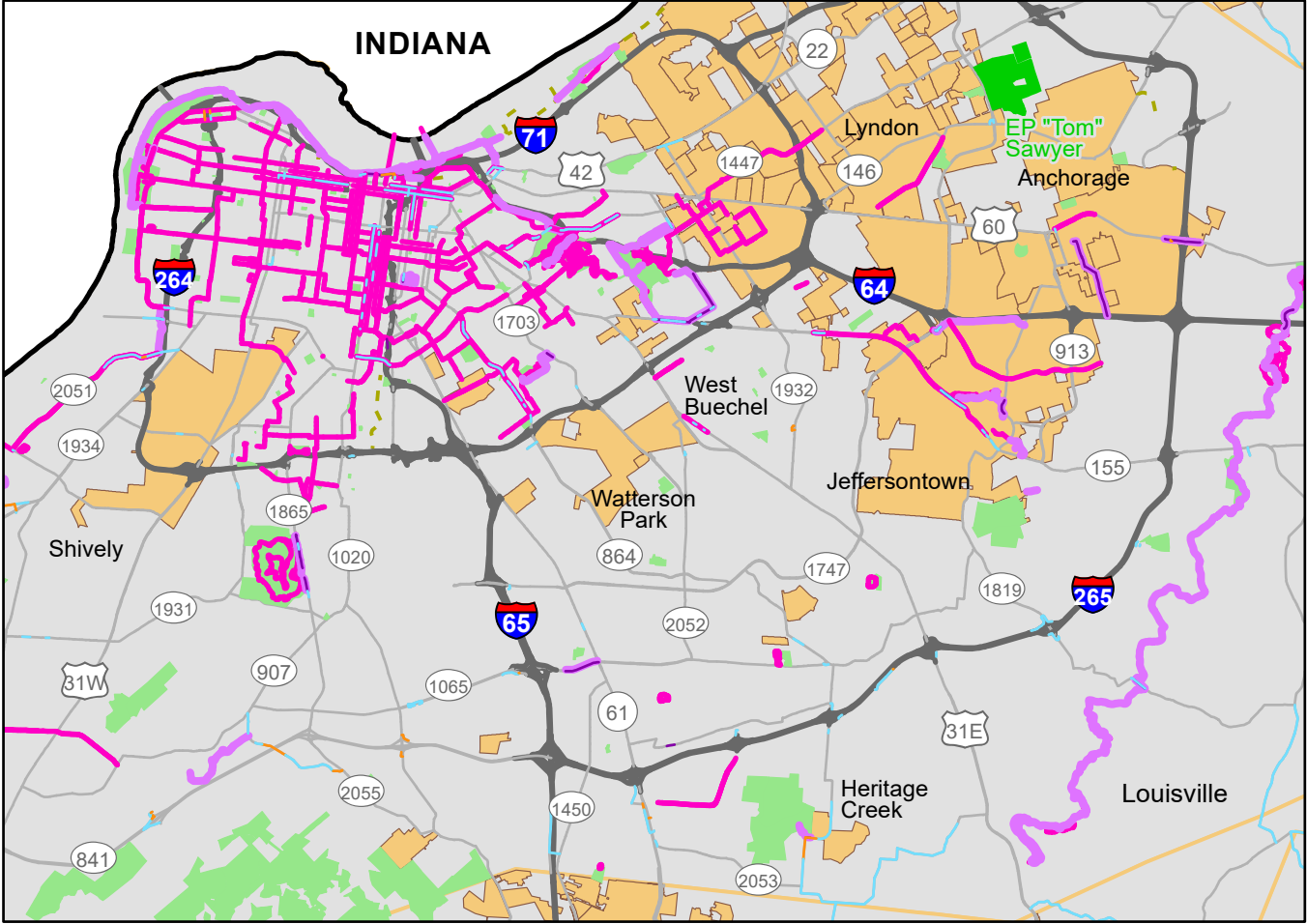
Bluegrass Area Development District Existing Bicycle Infrastructure

- Bicycle Facilities
- Shared Bicycle/Pedestrian Facilities
- Multi-Use Paths
- US Bicycle Route
- - - Abandoned Rail
- BCI A
- BCI B
- Interstates/Parkways
- State Roads
- County Boundary
- ◆ Kentucky Trail Town
- State Park
- Local Park
- Incorporated Area

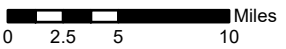
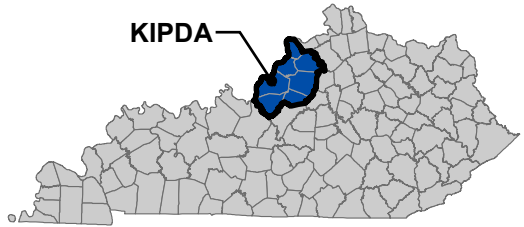


Kentuckiana Regional Planning and Development Agency

Existing Bicycle Infrastructure



- Bicycle Facilities
- Shared Bicycle/
Pedestrian Facilities
- Multi-Use Paths
- US Bicycle Route
- Abandoned Rail
- BCI A
- BCI B
- Interstates/Parkways
- State Roads
- County Boundary
- ◆ Kentucky Trail Town
- State Park
- Local Park
- Incorporated Area

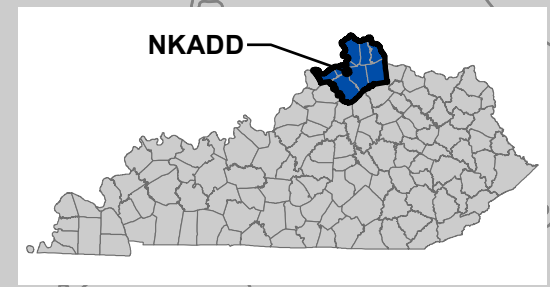
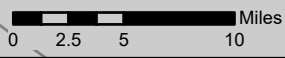
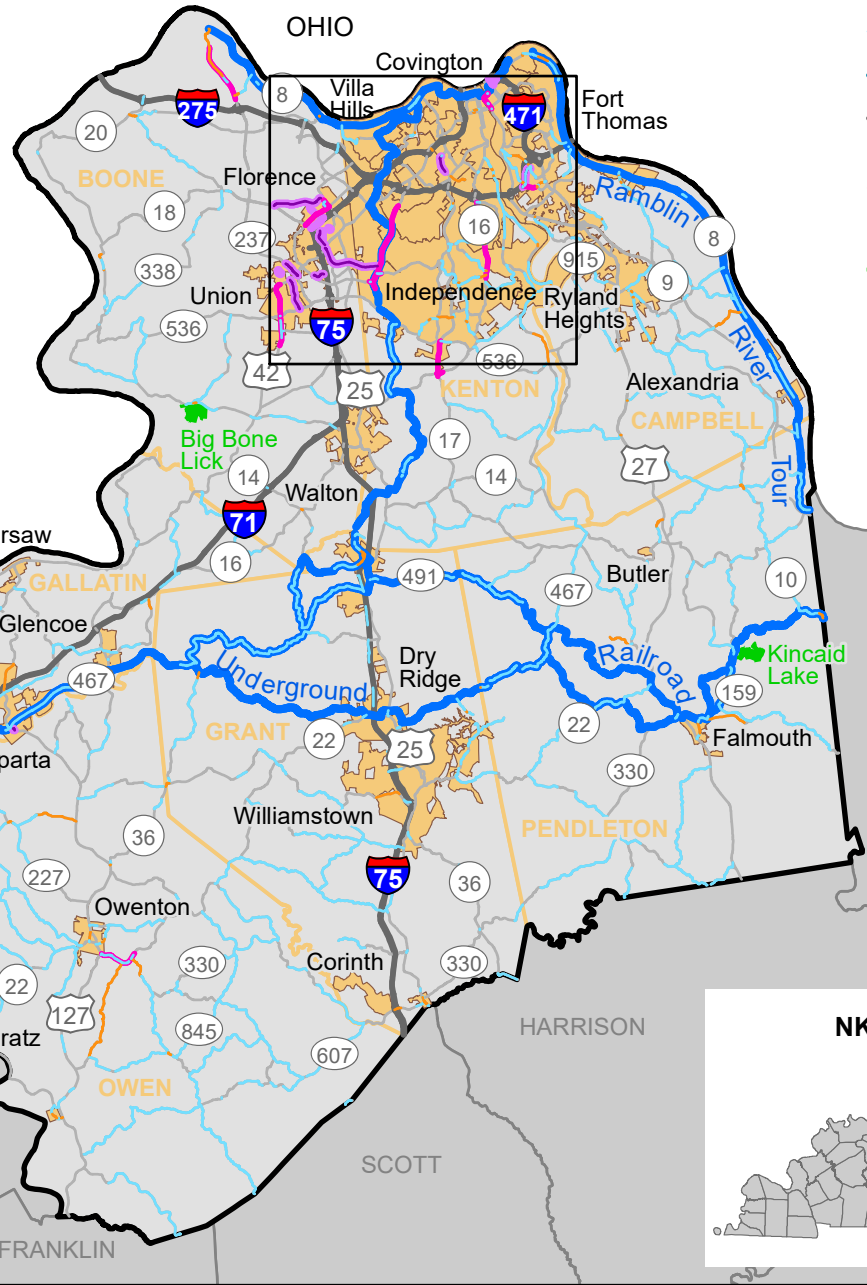
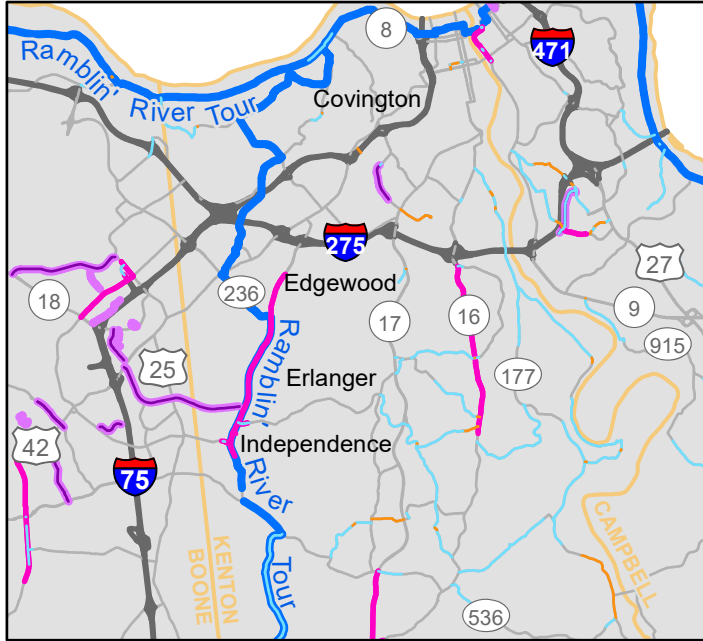


Northern Kentucky Area Development District

Existing Bicycle Infrastructure

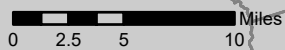
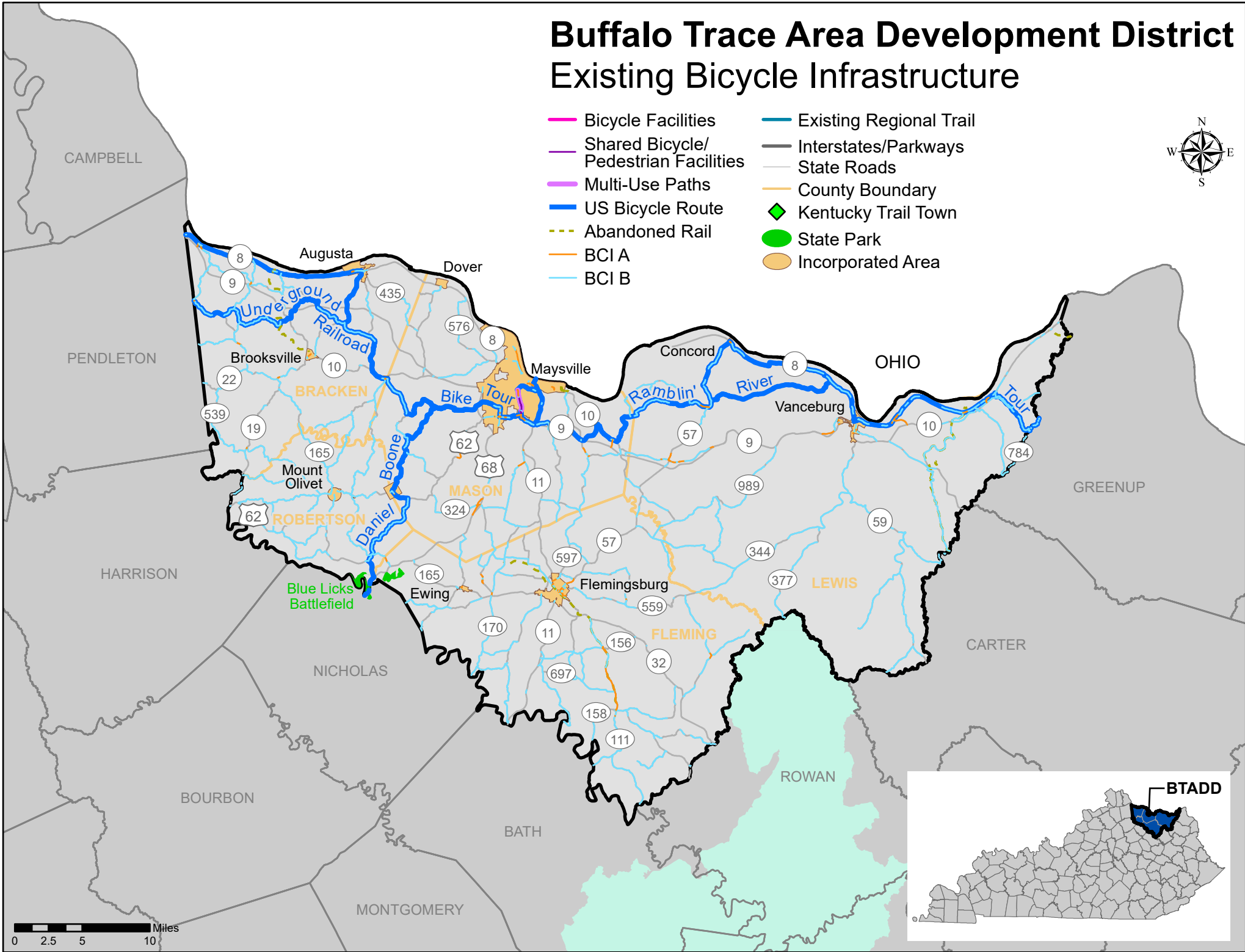


- Bicycle Facilities
- Shared Bicycle/ Pedestrian Facilities
- Multi-Use Paths
- US Bicycle Route
- Abandoned Rail
- BCI A
- BCI B
- Existing Regional Trail
- Interstates/Parkways
- State Roads
- County Boundary
- ◆ Kentucky Trail Town
- State Park
- Incorporated Area

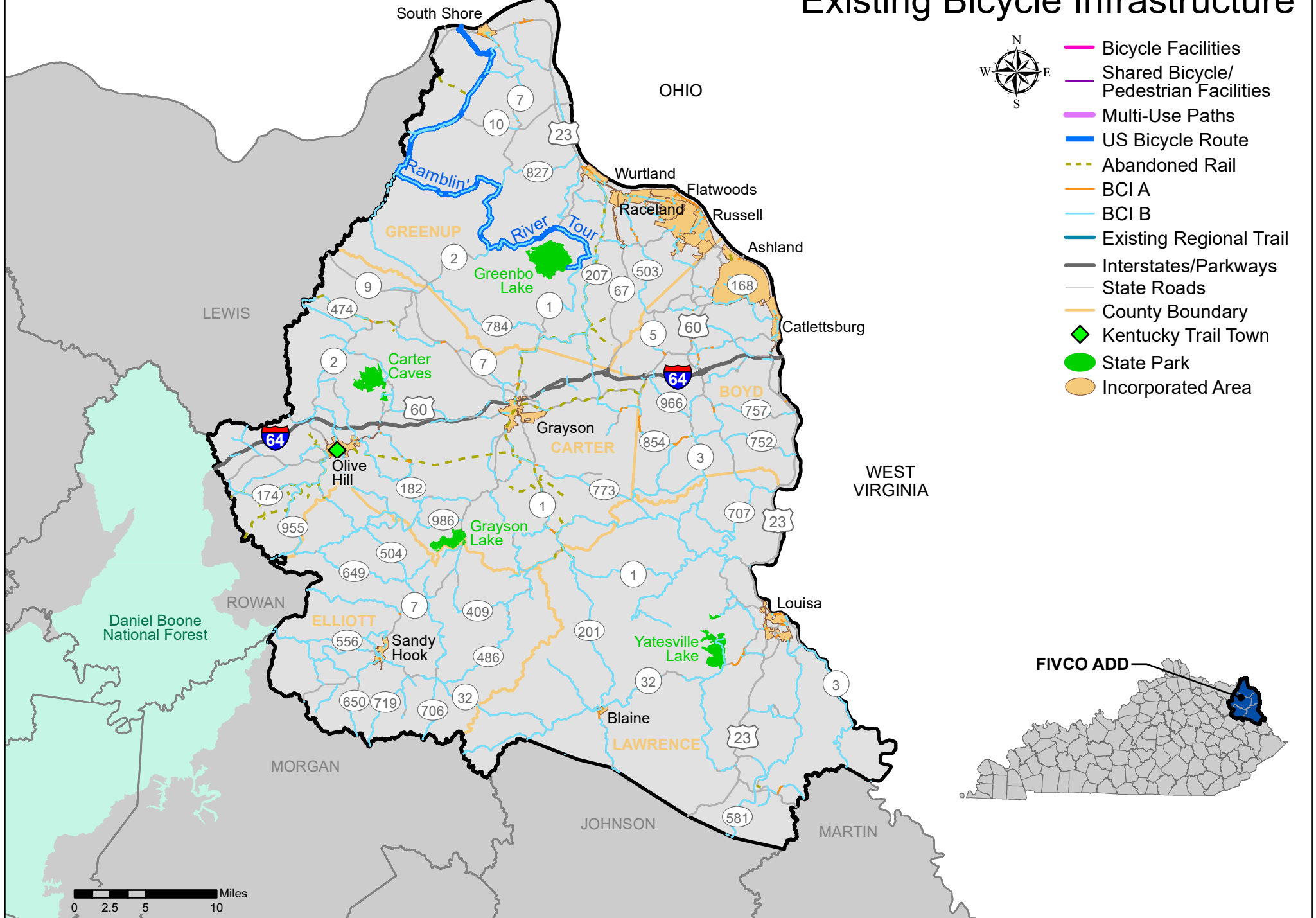


Buffalo Trace Area Development District Existing Bicycle Infrastructure

- Bicycle Facilities
- Shared Bicycle/ Pedestrian Facilities
- Multi-Use Paths
- US Bicycle Route
- - - Abandoned Rail
- BCI A
- BCI B
- Existing Regional Trail
- Interstates/Parkways
- State Roads
- County Boundary
- ◆ Kentucky Trail Town
- State Park
- Incorporated Area

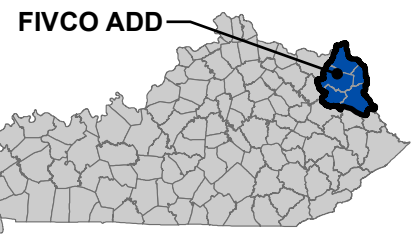


FIVCO Area Development District Existing Bicycle Infrastructure



- Bicycle Facilities
- Shared Bicycle/
Pedestrian Facilities
- Multi-Use Paths
- US Bicycle Route
- Abandoned Rail
- BCI A
- BCI B
- Existing Regional Trail
- Interstates/Parkways
- State Roads
- County Boundary
- ◆ Kentucky Trail Town
- State Park
- Incorporated Area

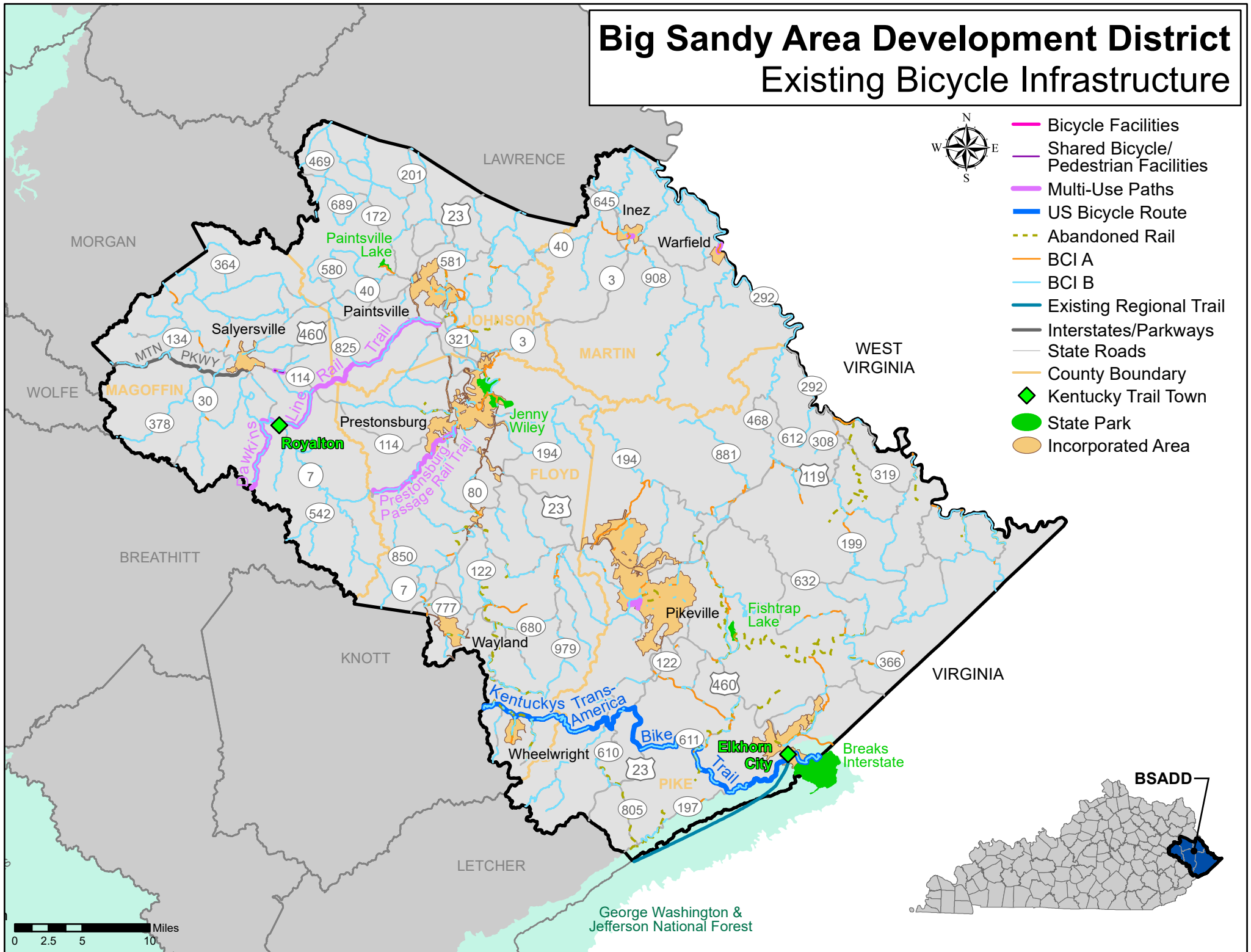
0 2.5 5 10 Miles



Big Sandy Area Development District Existing Bicycle Infrastructure



- Bicycle Facilities
- Shared Bicycle/ Pedestrian Facilities
- Multi-Use Paths
- US Bicycle Route
- Abandoned Rail
- BCI A
- BCI B
- Existing Regional Trail
- Interstates/Parkways
- State Roads
- County Boundary
- ◆ Kentucky Trail Town
- State Park
- Incorporated Area

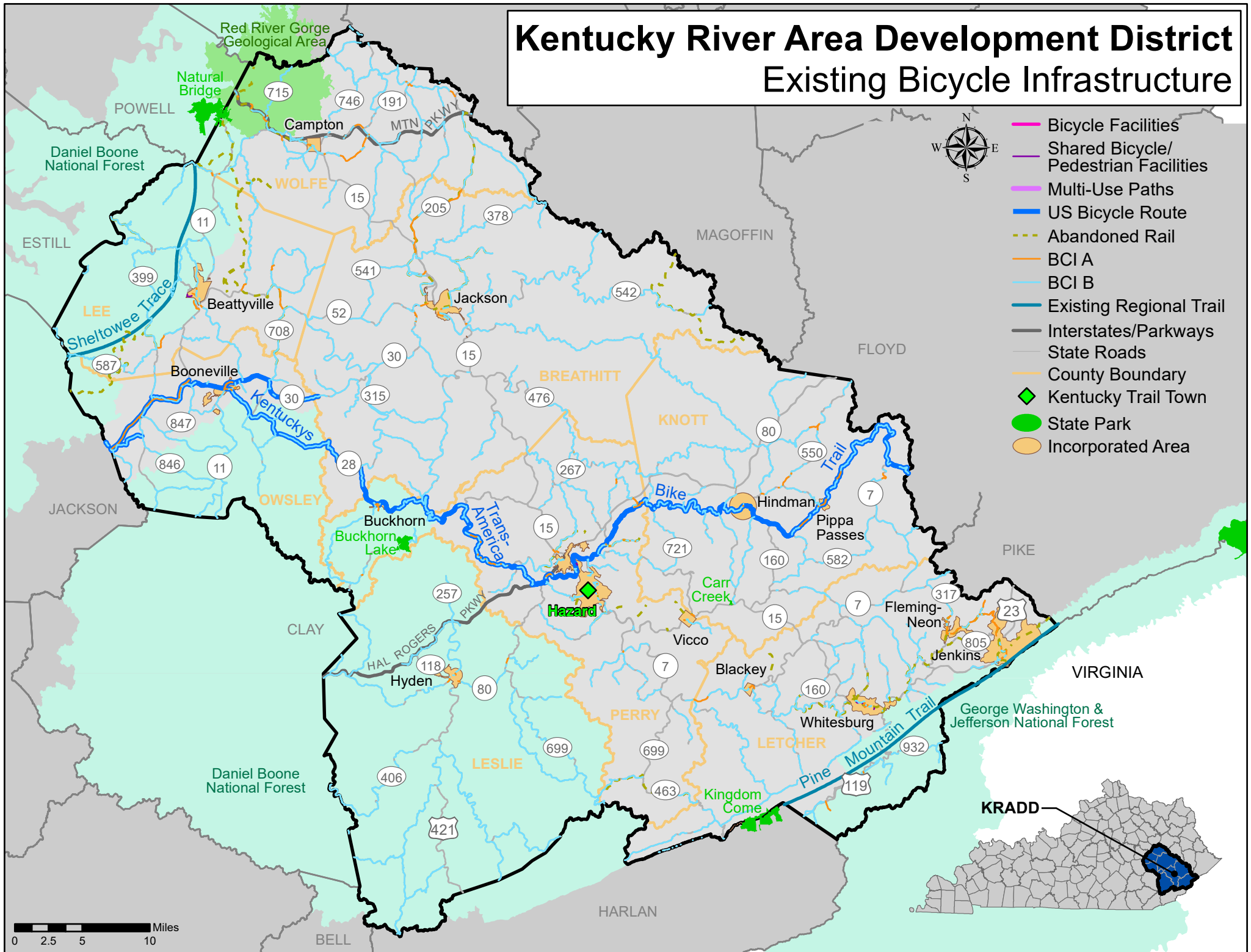


0 2.5 5 10 Miles

George Washington & Jefferson National Forest

BSADD

Kentucky River Area Development District Existing Bicycle Infrastructure



0 2.5 5 10 Miles

