

FRANKFORT, KENTUCKY

AL-5024 (FAA)

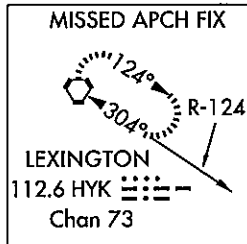
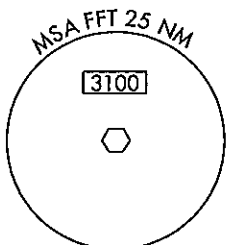
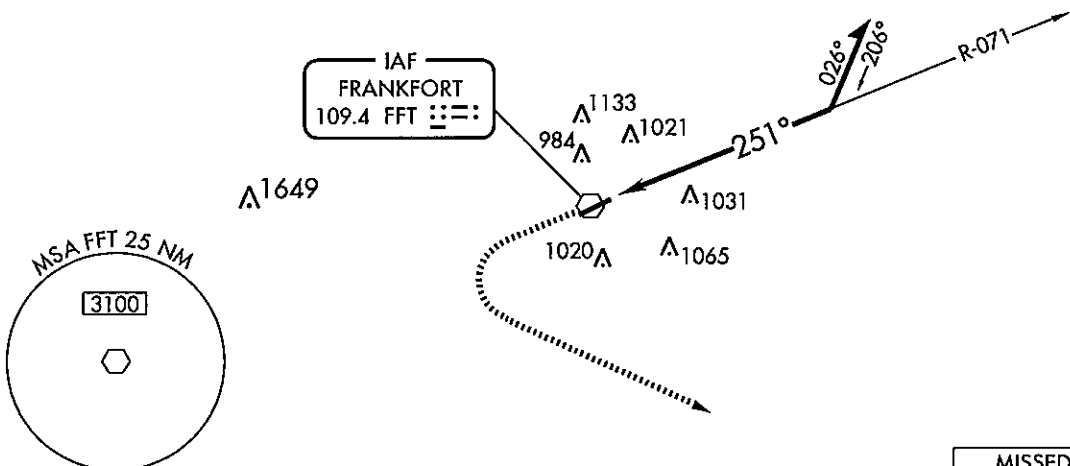
VOR RWY 24

FRANKFORT/ CAPITAL CITY (F'F'T)

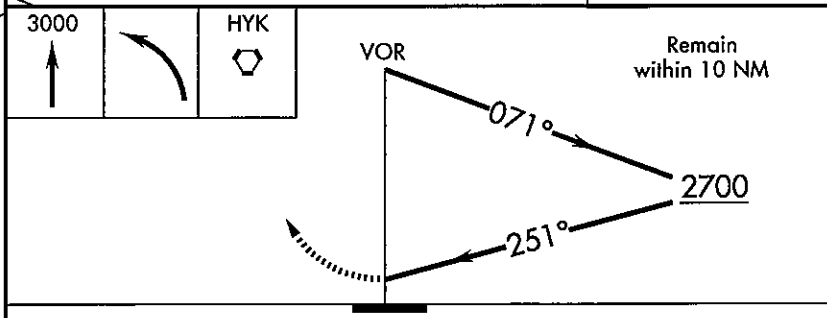
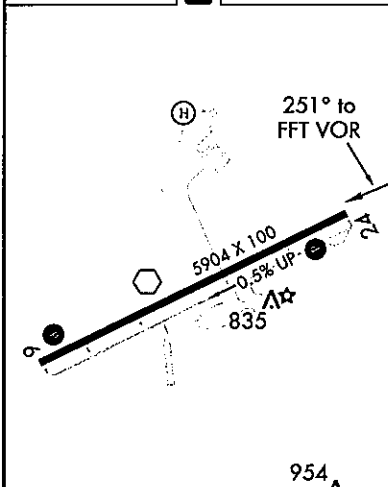
VOR FFT	APP CRS	Rwy Idg	5900
109.4	251°	TDZE	785
		Apt Elev	803

<p>▽ ▲ NA</p>		<p>MISSED APPROACH: Climb to 3000 then left turn direct HYK VORTAC and hold.</p>	
ASOS 119.275	LEXINGTON APP CON 120.75 298.9	CLNC DEL 118.1	UNICOM 122.8 (CTAF) 0

SE-1, 12 JAN 2012 to 09 FEB 2012



ELEV 803 **D** TDZE 785



CATEGORY	A	B	C	D
S-24	1440-1 655 (700-1)		1440-1¾ 655 (700-1¾)	1440-2 655 (700-2)
CIRCLING	1440-1 637 (700-1)		1440-1¾ 637 (700-1¾)	1440-2 637 (700-2)

MIRL Rwy 6-24 0
REIL Rwy 6 and 24 0

FRANKFORT, KENTUCKY
Amdt 2B 11237

38°11'N-84°54'W

FRANKFORT/ CAPITAL CITY (F'F'T)
VOR RWY 24

SE-1, 12 JAN 2012 to 09 FEB 2012

FRANKFORT, KENTUCKY

AL-5024 (FAA)

LOC RWY 24

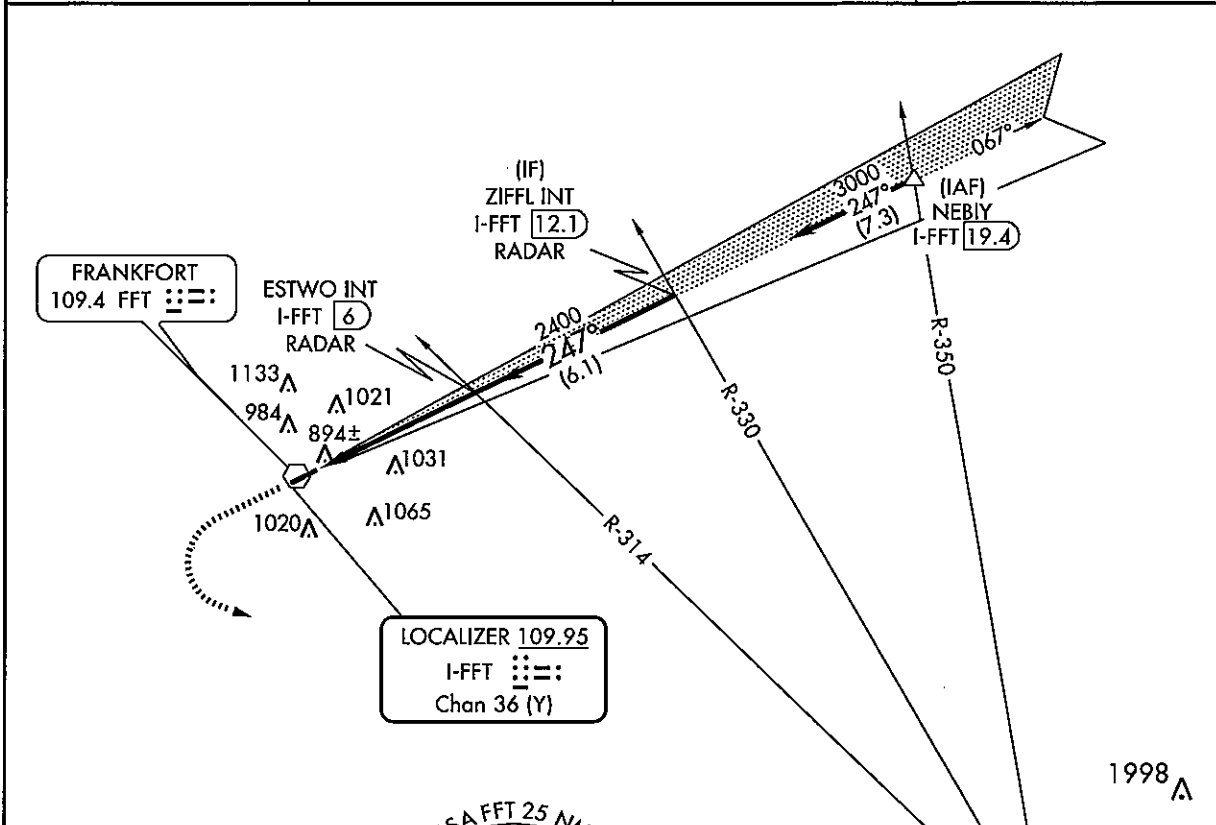
FRANKFORT/ CAPITAL CITY (F'F'T)

LOC/DME I-FFT 109.95 Chan 36 (Y)	APP CRS 247°	Rwy Idg TDZE Apt Elev	5900 790 806
---	------------------------	-----------------------------	---

▼ Visibility reduction by helicopters NA. If local altimeter setting not received, use Lexington altimeter setting and increase all MDAs 80 feet.

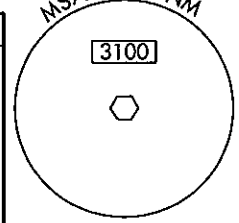
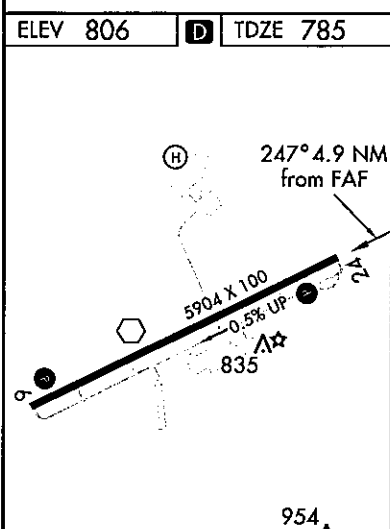
▲ NA MISSED APPROACH: Climb to 3100 then left turn direct HYK VORTAC and hold.

ASOS 119.275	LEXINGTON APP CON 120.75 298.9	CLNC DEL 118.1	UNICOM 122.8 (CTAF) 0
------------------------	--	--------------------------	---------------------------------

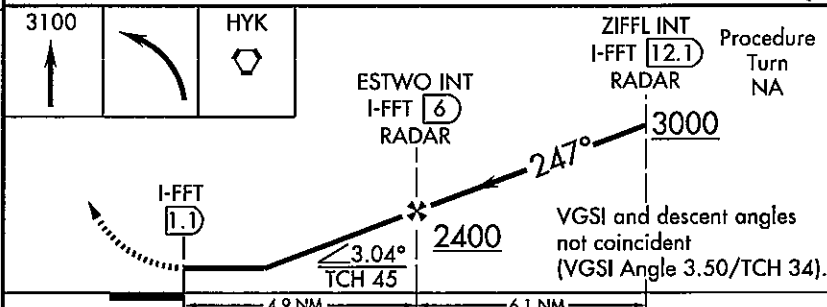


SE-1, 12 JAN 2012 to 09 FEB 2012

SE-1, 12 JAN 2012 to 09 FEB 2012



LEXINGTON
112.6 HYK
Chan 73



ELEV 806 TDZE 785

MIRL Rwy 6-24
REIL Rws 6 and 24

FAF to MAP 4.9 NM

Knots	60	90	120	150	180
Min:Sec	4:54	3:16	2:27	1:58	1:38

CATEGORY	A	B	C	D
S-24	1280-1 490 (500-1)	1280-1 490 (500-1)	1280-1 1/4 490 (500-1 1/4)	1280-1 1/2 490 (500-1 1/2)
CIRCLING	1280-1 474 (500-1)	1340-1 534 (600-1)	1380-1 1/2 574 (600-1 1/2)	1420-2 614 (700-2)

FRANKFORT, KENTUCKY
Amdt 2A 11237

FRANKFORT/ CAPITAL CITY (F'F'T)

38°11'N-84°54'W

LOC RWY 24

FRANKFORT, KENTUCKY

AL-5024 (FAA)

RNAV (GPS) RWY 24

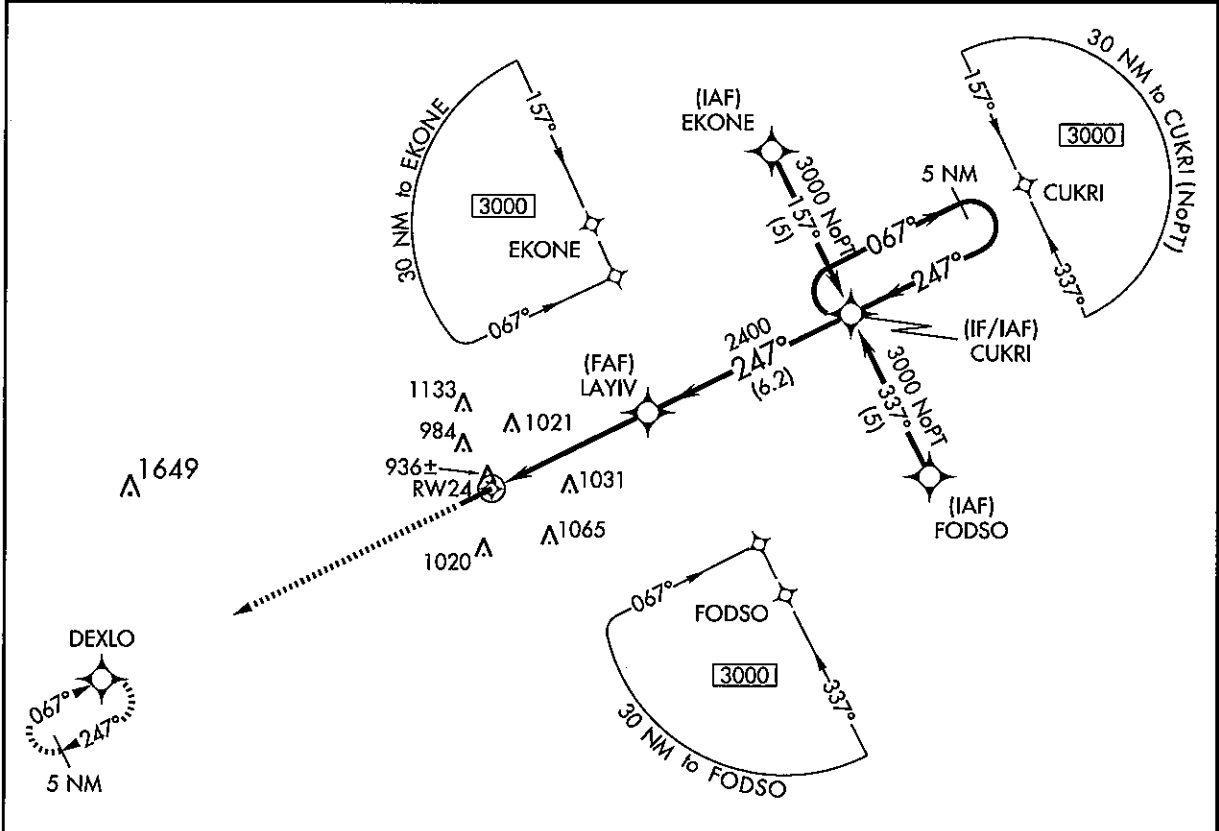
FRANKFORT/ CAPITAL CITY (F'F'T)

APP CRS	Rwy Idg	5900
247°	TDZE	790
	Apt Elev	806

⚠ DME/DME RNP-0.3 NA. Visibility reduction by helicopters NA. If local altimeter setting not received, use Lexington altimeter setting and increase all MDAs 80 feet.

⚠ MISSED APPROACH: Climb to 3000 direct DEXLO and hold.

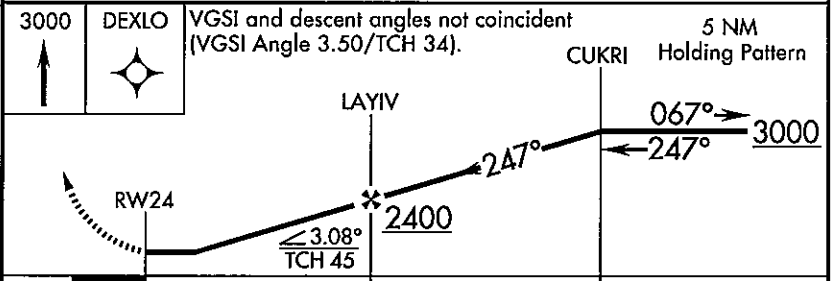
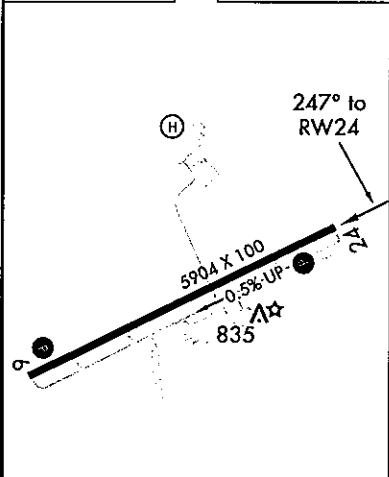
ASOS 119.275	LEXINGTON APP CON 120.75 298.9	CLNC DEL 118.1	UNICOM 122.8 (CTAF) 0
-----------------	-----------------------------------	-------------------	---------------------------------



SE-1, 12 JAN 2012 to 09 FEB 2012

SE-1, 12 JAN 2012 to 09 FEB 2012

ELEV 806	D	TDZE 785
----------	----------	----------



CATEGORY	A	B	C	D
LNAV MDA	1280-1	490 (500-1)	1280-1¼ 490 (500-1¼)	1280-1½ 490 (500-1½)
CIRCLING	1280-1 474 (500-1)	1340-1 534 (600-1)	1380-1½ 574 (600-1½)	1420-2 614 (700-2)

FRANKFORT, KENTUCKY
Amdt 1A 11237

38°11'N-84°54'W

FRANKFORT/ CAPITAL CITY (F'F'T)

RNAV (GPS) RWY 24

FRANKFORT, KENTUCKY

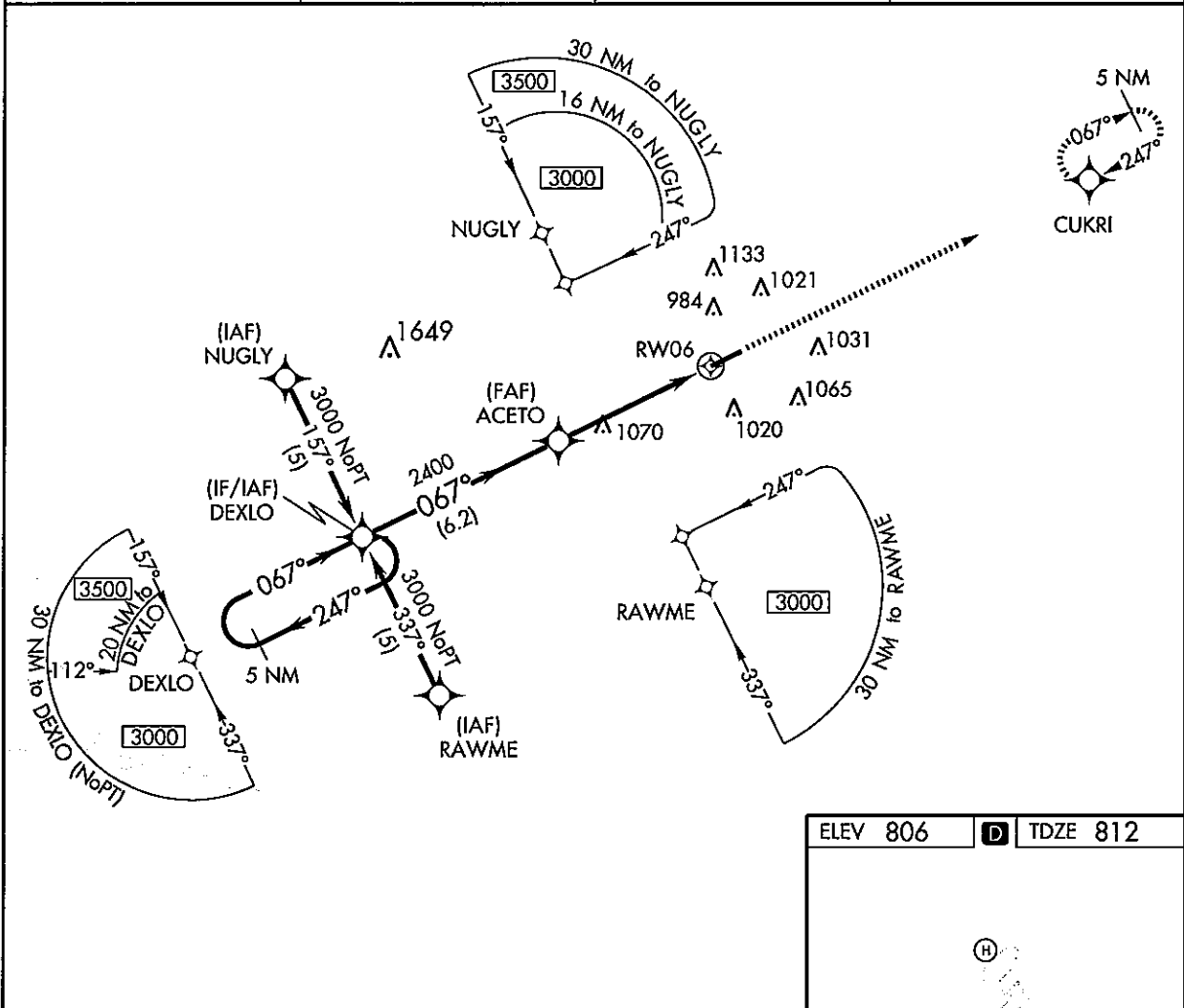
AL-5024 (FAA)

RNAV (GPS) RWY 6

FRANKFORT/CAPITAL CITY (F'FT)

APP CRS	Rwy Idg	5500
067°	TDZE	806
	Apt Elev	806

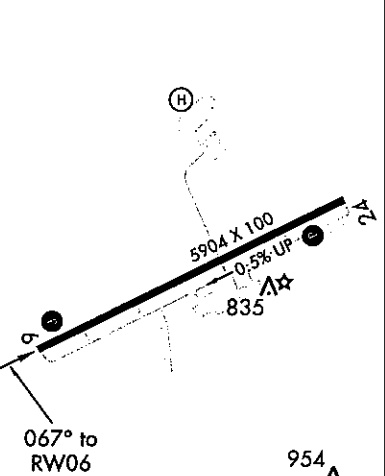
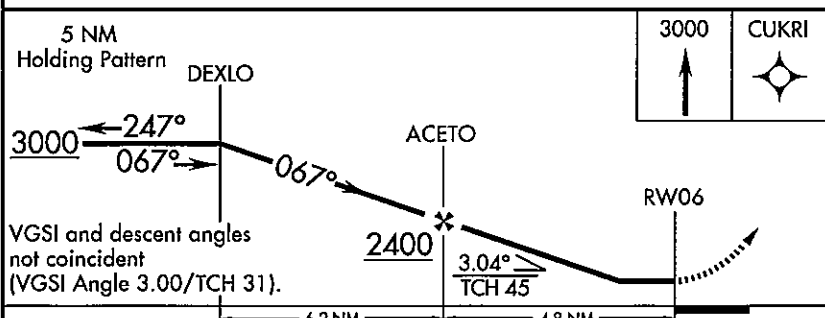
<p>▼ DME/DME RNP-0.3 NA. Visibility reduction by helicopters NA. ▲ If local altimeter setting not received, use Lexington altimeter setting and increase all MDAs 80 feet.</p>		<p>MISSED APPROACH: Climb to 3000 direct CUKRI and hold.</p>	
ASOS	LEXINGTON APP CON	CLNC DEL	UNICOM
119.275	120.75 298.9	118.1	122.8 (CTAF) 0



SE-1, 12 JAN 2012 to 09 FEB 2012

SE-1, 12 JAN 2012 to 09 FEB 2012

ELEV 806	D	TDZE 812
----------	---	----------



	6.2 NM		4.8 NM	
CATEGORY	A	B	C	D
LNAV MDA	1320-1	514 (600-1)	1320-1½ 514 (600-1½)	1320-1¾ 514 (600-1¾)
CIRCLING	1320-1 514 (600-1)	1340-1 534 (600-1)	1380-1½ 574 (600-1½)	1420-2 614 (700-2)

MIRL Rwy 6-24 0
 REIL Rws 6 and 24 0

FRANKFORT, KENTUCKY
 Amdt 1 11237

38°11'N-84°54'W

FRANKFORT/CAPITAL CITY (F'FT)

RNAV (GPS) RWY 6