

SAFERoad SOLUTIONS

EFFECTIVE ROAD DESIGNS EXPLAINED



Roadway Reconfiguration



US 42/Brownsboro Road in Jefferson County

A Roadway Reconfiguration is a traffic-management tool that improves safety and mobility by changing the number, size and type of travel lanes. It typically involves converting an existing four-lane, undivided roadway

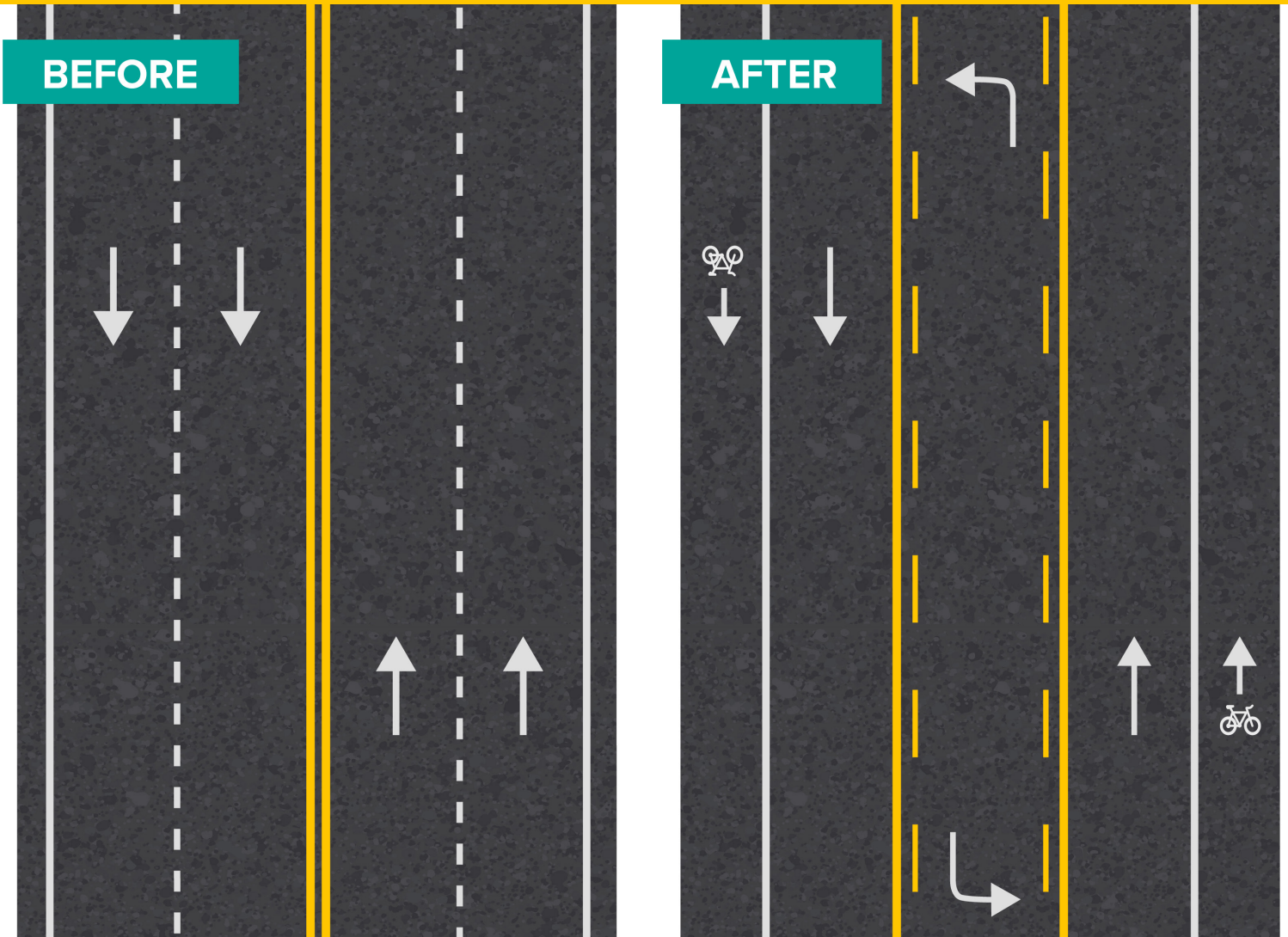
BENEFITS

- **Safety** – unnecessarily wide streets become leaner, slowing vehicle speeds. There’s a reduction of rear-end and left-turn crashes due to the dedicated left-turn lane. Right-angle crashes are also reduced as side street motorists cross fewer travel lanes.
- **Mobility** – a road reconfiguration improves travel for all users, not just motorists, by allocating space for pedestrians, cyclists and other forms of transit.





Roadway Reconfiguration



WHAT TO KNOW ABOUT ROADWAY RECONFIGURATION

- Also known as roadway reallocation
- Typically includes two through lanes and a center turn lane
- Reallocates space that can be repurposed as bike lanes, pedestrian crossings, parking, and more

WHEN TO USE A ROADWAY RECONFIGURATION

A roadway reconfiguration is effective on roads with:

- congestion because of left-turning vehicles
- an average daily traffic volume of less than 25,000 vehicles
- limited space for construction