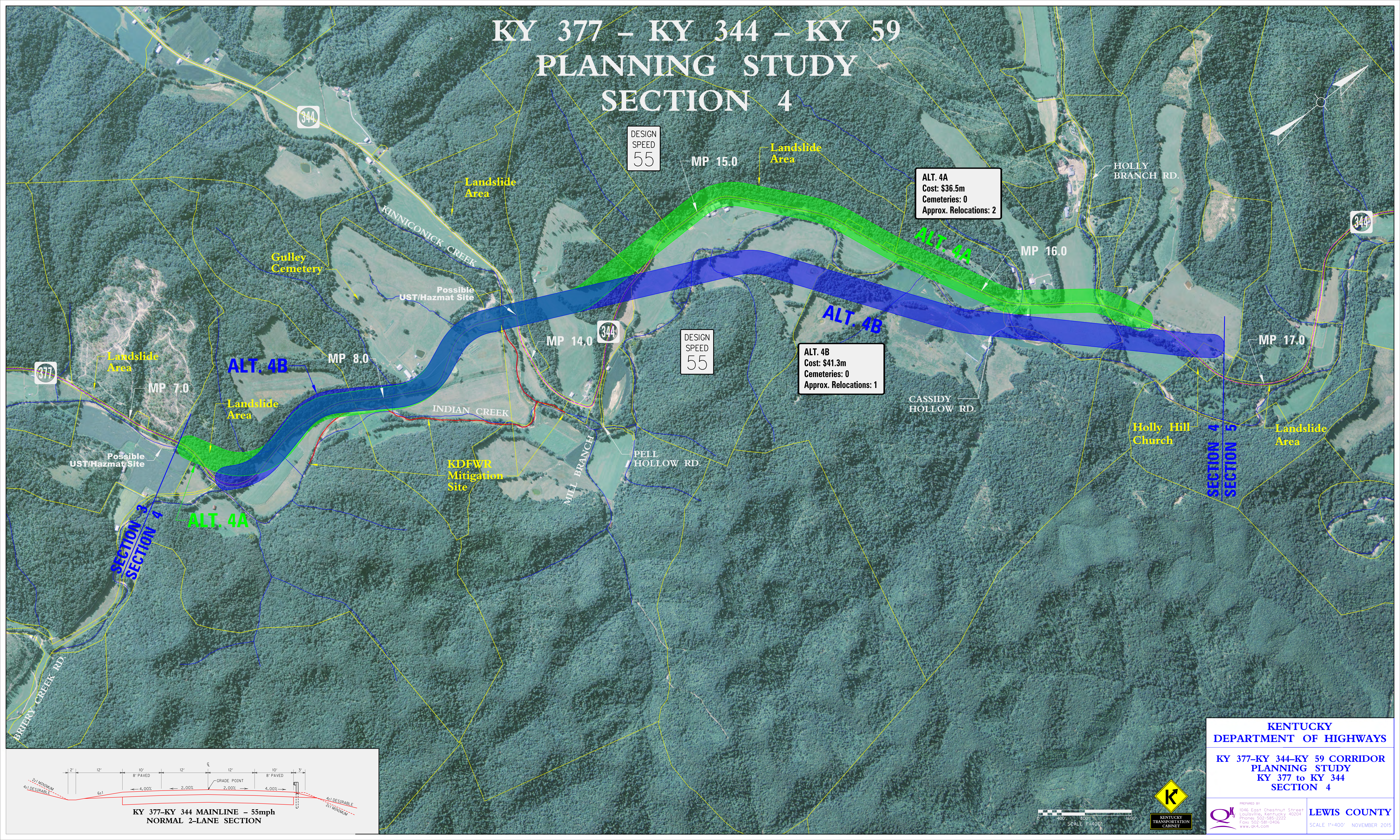


KY 377 – KY 344 – KY 59 PLANNING STUDY SECTION 4

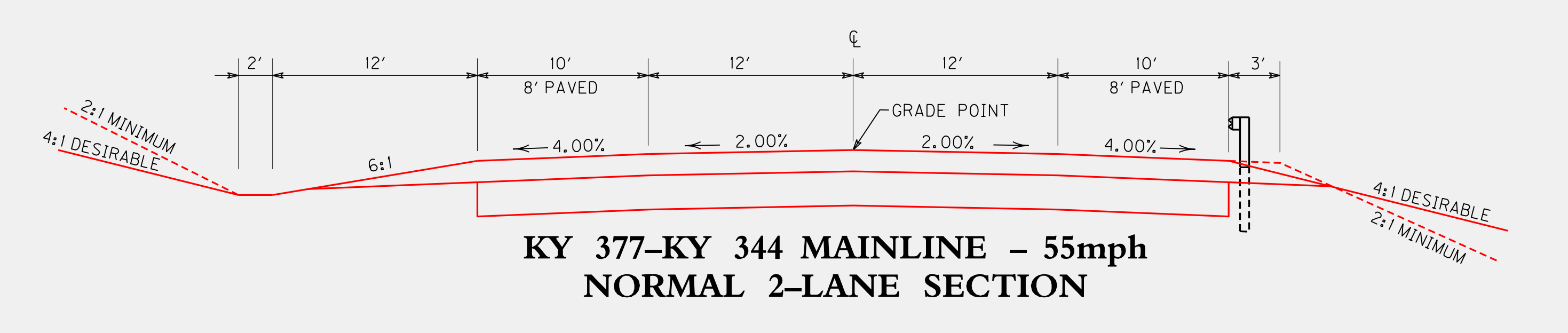


ALT. 4A
Cost: \$36.5m
Cemeteries: 0
Approx. Relocations: 2

ALT. 4B
Cost: \$41.3m
Cemeteries: 0
Approx. Relocations: 1

DESIGN SPEED
55

DESIGN SPEED
55



SCALE 1"=400'



**KENTUCKY
DEPARTMENT OF HIGHWAYS**

KY 377-KY 344-KY 59 CORRIDOR
PLANNING STUDY
KY 377 to KY 344
SECTION 4

PREPARED BY
1046 East Chestnut Street
Louisville, Kentucky 40204
Phone: 502-585-2222
Fax: 502-581-0406
www.kd4.com

LEWIS COUNTY
SCALE 1"=400' NOVEMBER 2015