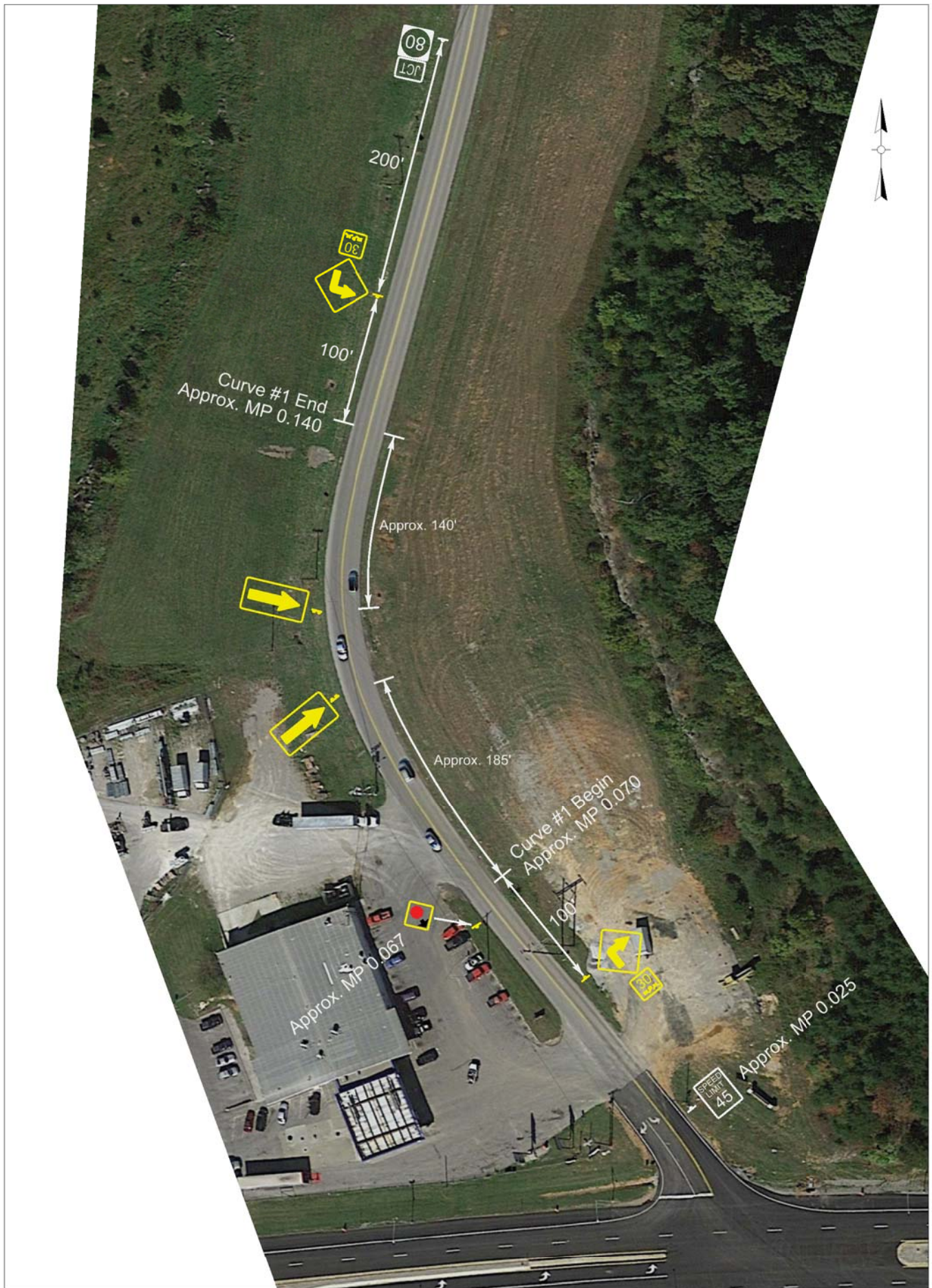
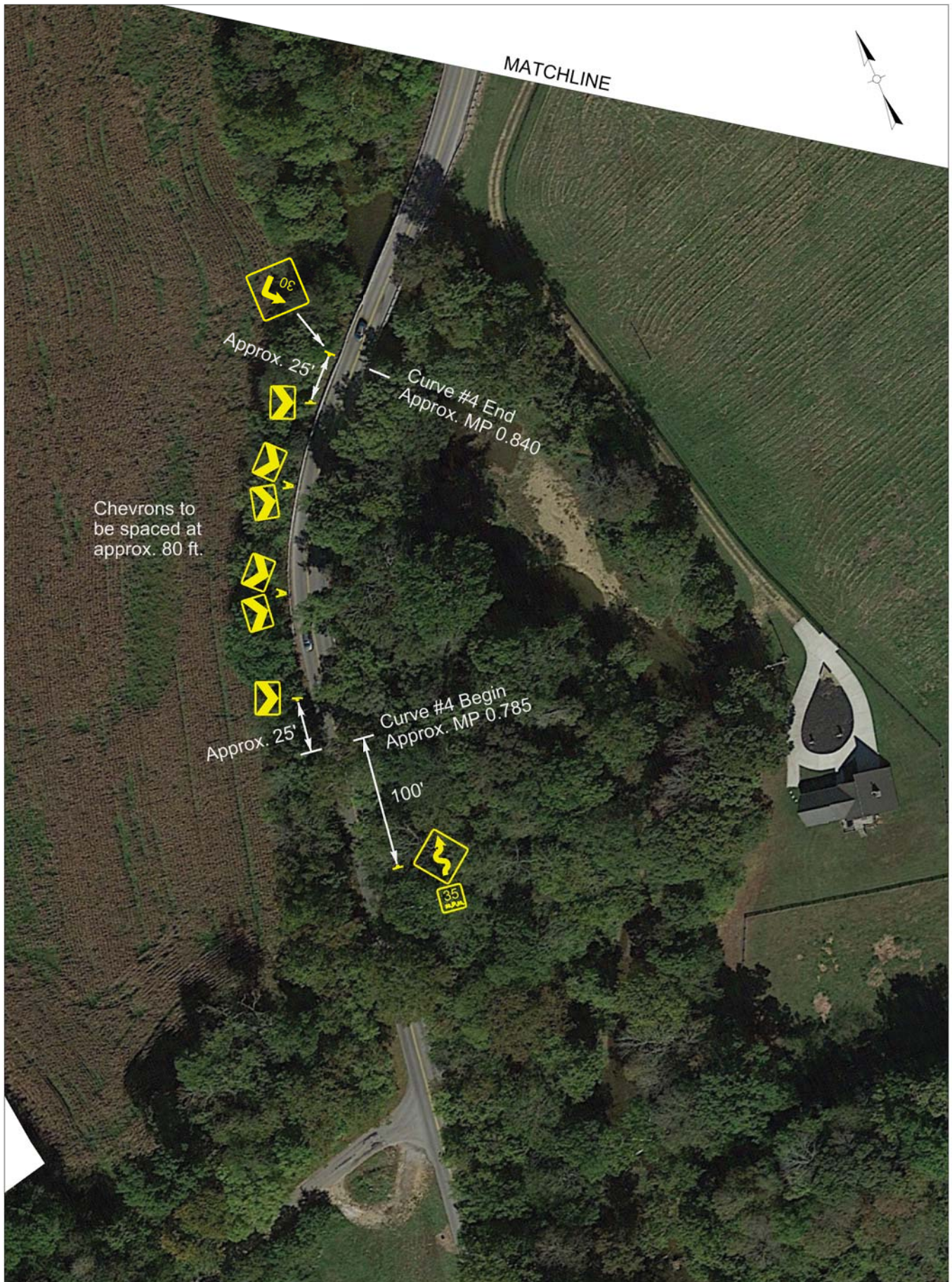


# SIGNING LAYOUT SHEET 1 OF 8



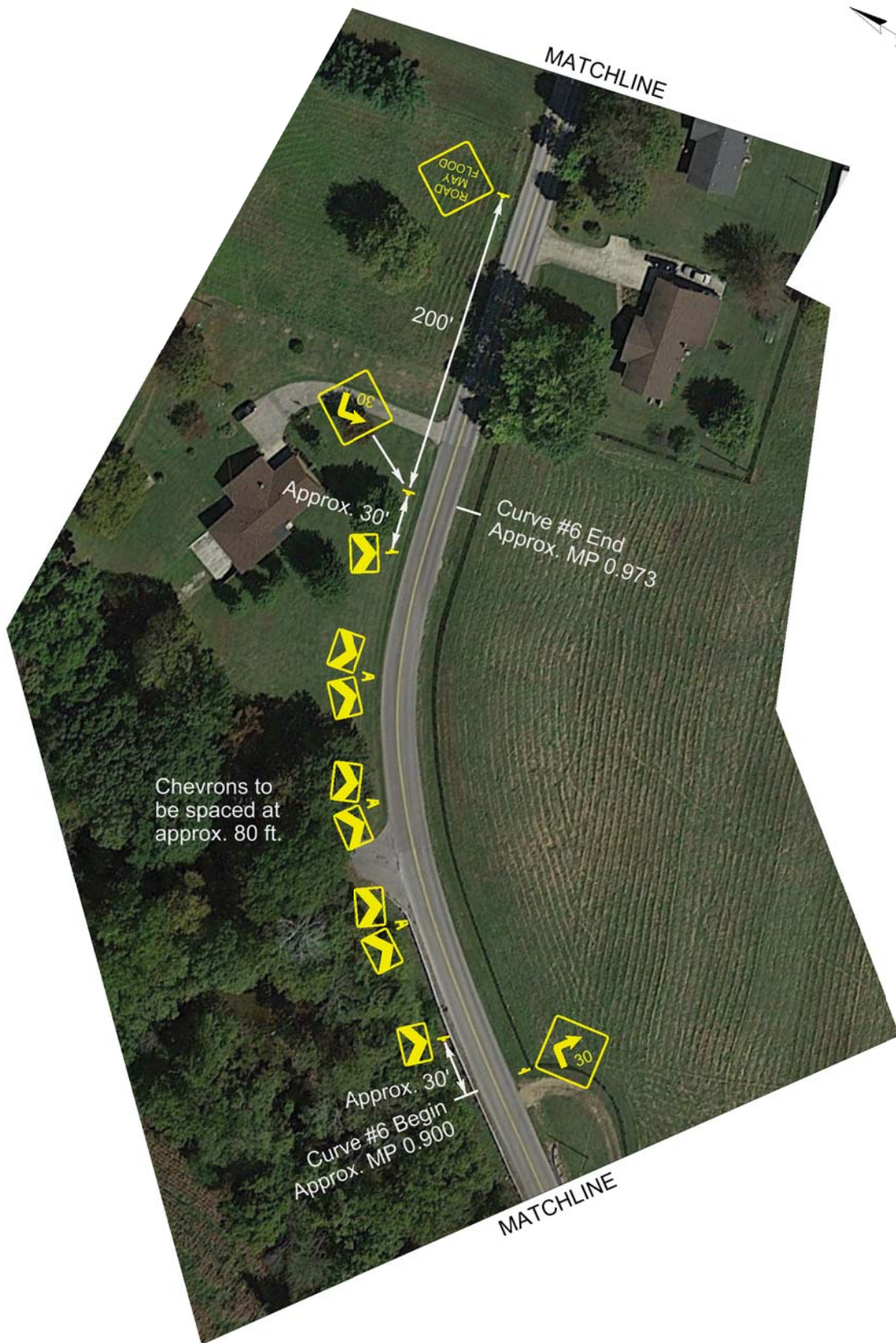


# SIGNING LAYOUT SHEET 2 OF 8





# SIGNING LAYOUT SHEET 3 OF 8





# SIGNING LAYOUT SHEET 4 OF 8





An aerial photograph of a road project with various annotations. At the top right, a north arrow points towards the top right, and a 'MATCHLINE' label is present. The road runs diagonally from the top left towards the bottom right. 
   
 Annotations include:
 

- A yellow sign with a left-turn arrow and the number '06' is placed at the top left.
- A series of yellow chevron signs are placed along the road, with a double-headed arrow indicating a spacing of 'Approx. 75' between two sets.
- Text 'Chevrans to be spaced at approx. 90 ft.' is written near the chevron signs.
- At the bottom left, a double-headed arrow indicates a spacing of 'Approx. 60' between two chevron signs.
- Near the bottom center, two rectangular markers labeled '2' and '2' are shown, with text 'Curve #10 Begin Approx. MP 1.995' pointing to them.
- A long double-headed arrow labeled '275'' spans a section of the road.
- Near the bottom right, a yellow curve warning sign is shown with a '30 MPH' speed limit sign below it. Text 'Curve #10 End Approx. MP 2.085' is written nearby.



# SIGNING LAYOUT SHEET 6 OF 8





# SIGNING LAYOUT SHEET 7 OF 8





# SIGNING LAYOUT SHEET 8 OF 8

