

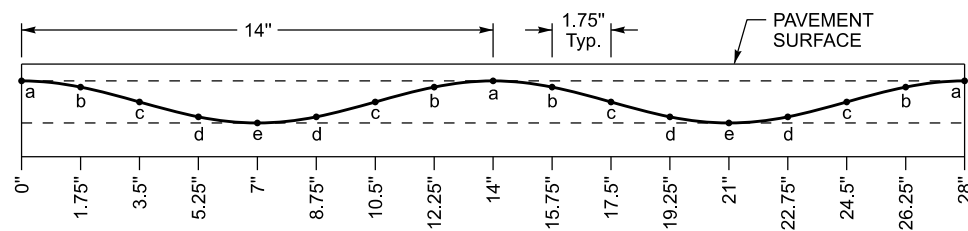
PAVEMENT CROSS-SECTION
WHEN SINUSOIDAL EDGELINE RUMBLE STRIPS (SELRS) ARE SPECIFIED



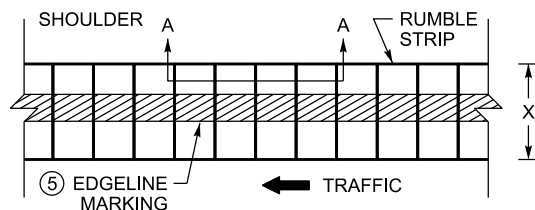
PAVEMENT CROSS-SECTION
WHEN SINUSOIDAL SHOULDER RUMBLE STRIPS (SSRS) ARE SPECIFIED

SHOULDER WIDTH (Z) ②	RUMBLE TYPE ①	RUMBLE LENGTH (X) ③
<=2'	NOT RECOMMENDED	
2' - 5.5'	SELRS ⑥	8"
6' - 7.5'	SELRS ⑥	12"
>=8'	SELRS ⑥	16"

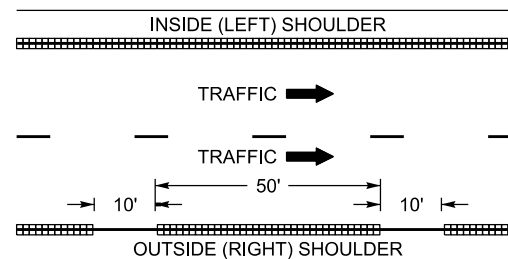
LOCATION	DEPTH
a	1/8"
b	3/16"
c	9/32"
d	13/32"
e	7/16"



SECTION A-A



SELRS DETAILS



BICYCLE GAPS ⑥

~ NOTES ~

- ① FOR MULTI-LANE ROADWAYS, THE TYPE OF SINUSOIDAL RUMBLE STRIP TO BE INSTALLED IS BASED ON SHOULDER WIDTH (Z). FOR SHOULDER WIDTHS LESS THAN 2' SINUSOIDAL RUMBLE STRIPS ARE NOT RECOMMENDED. FOR SHOULDER WIDTHS BETWEEN 2' TO 5.5' THE RUMBLE TYPE MAY BE SPECIFIED AS EITHER SINUSOIDAL EDGELINE RUMBLE STRIPS (SELRS) OR SINUSOIDAL SHOULDER RUMBLE STRIPS (SSRS). IN THESE SITUATIONS THE RUMBLE TYPE TO BE INSTALLED WILL BE SPECIFIED IN THE PLANS AND/OR PROPOSAL, OR AS DIRECTED BY THE ENGINEER.
- ② WHEN SELRS ARE SPECIFIED, SHOULDER WIDTH (Z) IS FROM THE LANE SIDE EDGE OF THE EDGELINE RUMBLE STRIP TO THE OUTSIDE EDGE OF TRAVERSABLE PAVEMENT. WHEN SSRS ARE SPECIFIED, SHOULDER WIDTH (Z) IS FROM THE CENTER OF THE EDGELINE STRIPE TO THE OUTSIDE EDGE OF TRAVERSABLE PAVEMENT.
- ③ RUMBLE LENGTH (X) AND/OR OFFSET DISTANCE MAY BE MODIFIED AS THE ENGINEER DIRECTS.
4. DISTANCES SHOWN ARE APPROXIMATE. MAINTAIN RUMBLE STRIP DIMENSIONS AND SPACING AS MUCH AS POSSIBLE.
- ⑤ WHEN SELRS ARE SPECIFIED, THE EDGELINE MARKING SHALL BE PLACED IN THE CENTER OF THE RUMBLE STRIP.
- ⑥ SINUSOIDAL RUMBLE STRIPS ALONG OUTSIDE (RIGHT) SHOULDERS THAT ARE 3' OR WIDER SHOULD INCLUDE BICYCLE GAPS AS DETAILED. BICYCLE GAPS ARE NOT REQUIRED ON INSIDE (LEFT) SHOULDERS. BICYCLE GAPS SHALL NOT BE USED ON INTERSTATES AND PARKWAYS.
7. RUMBLE STRIPS SHOULD BE OMITTED WHERE THE POSTED SPEED LIMIT IS 45 MPH OR LESS.

BID ITEMS AND UNIT TO BID
SINUSOIDAL RUMBLE STRIPS

LF

DRAWING NOT TO SCALE

USE WITH CUR. STD. DWG.
TPR-115

**KENTUCKY
DEPARTMENT OF HIGHWAYS**

**SINUSOIDAL RUMBLE
STRIP DETAILS
MULTI-LANE ROADWAYS
AND RAMPS**