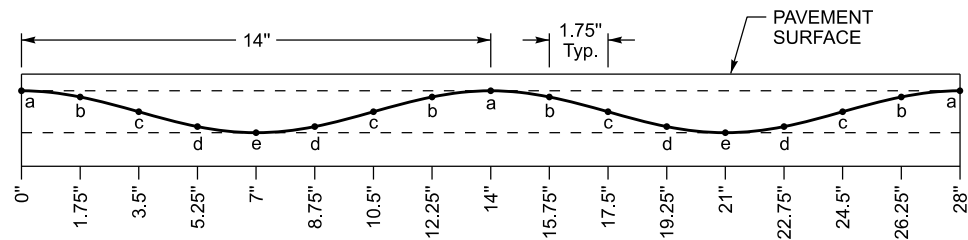
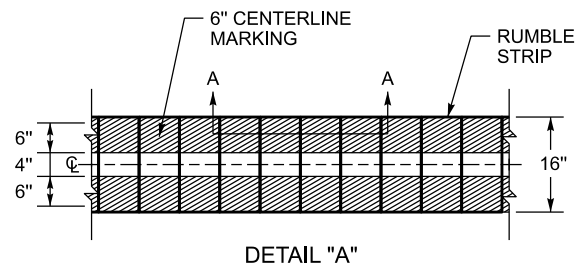
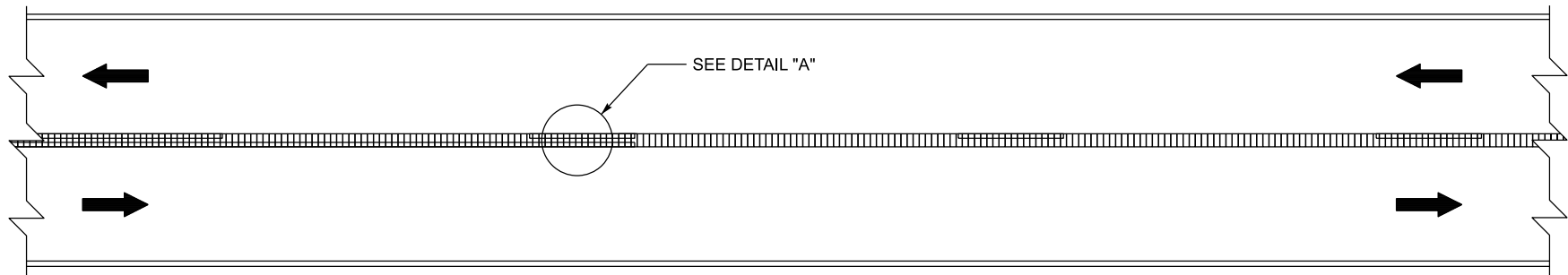


PLAN VIEW



SECTION A-A

| LOCATION | DEPTH |
|----------|--------|
| a | 1/8" |
| b | 3/16" |
| c | 9/32" |
| d | 13/32" |
| e | 7/16" |

DRAWING NOT TO SCALE

USE WITH CUR. STD. DWG.
TPR-100

~ NOTES ~

- DISTANCES SHOWN ARE APPROXIMATE. MAINTAIN RUMBLE STRIP DIMENSIONS AS MUCH AS POSSIBLE.
- SINUSOIDAL CENTERLINE RUMBLE STRIPS SHALL BE INSTALLED IN LINE WITH THE CENTER OF THE ROADWAY AS MUCH AS POSSIBLE.
- DO NOT INSTALL SINUSOIDAL CENTERLINE RUMBLE STRIPS IN AREAS INDICATED ON TPR-100.
- SINUSOIDAL CENTERLINE RUMBLE STRIPS SHOULD BE OMITTED WHERE THE POSTED SPEED LIMIT IS 45 MPH OR LESS, OR WHERE LANE WIDTHS ARE LESS THAN 11 FT.

BID ITEM AND UNIT TO BID
SINUSOIDAL RUMBLE STRIPS

LF

KENTUCKY
DEPARTMENT OF HIGHWAYS

SINUSOIDAL
CENTERLINE
RUMBLE STRIPS
6 INCH STRIPING