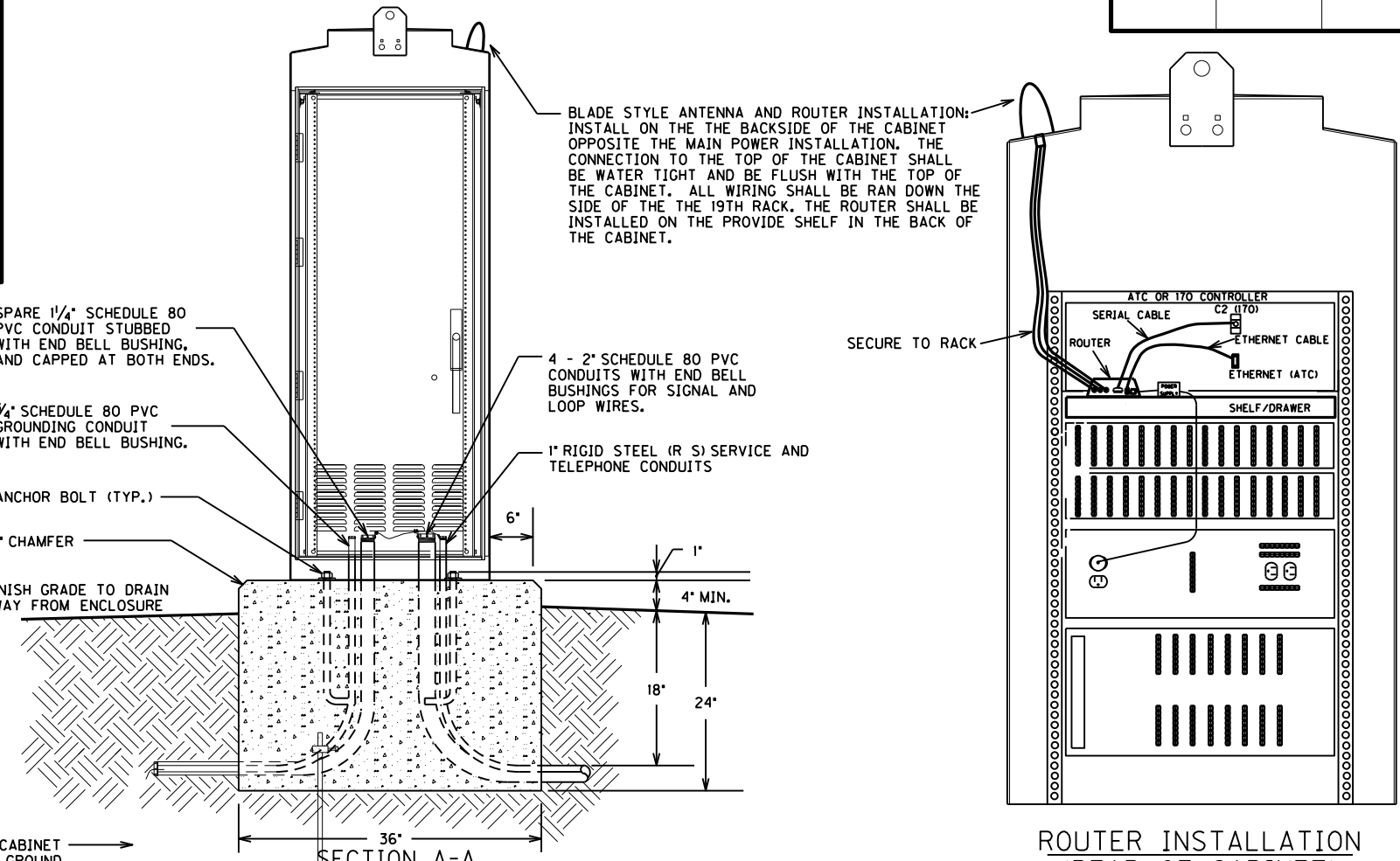
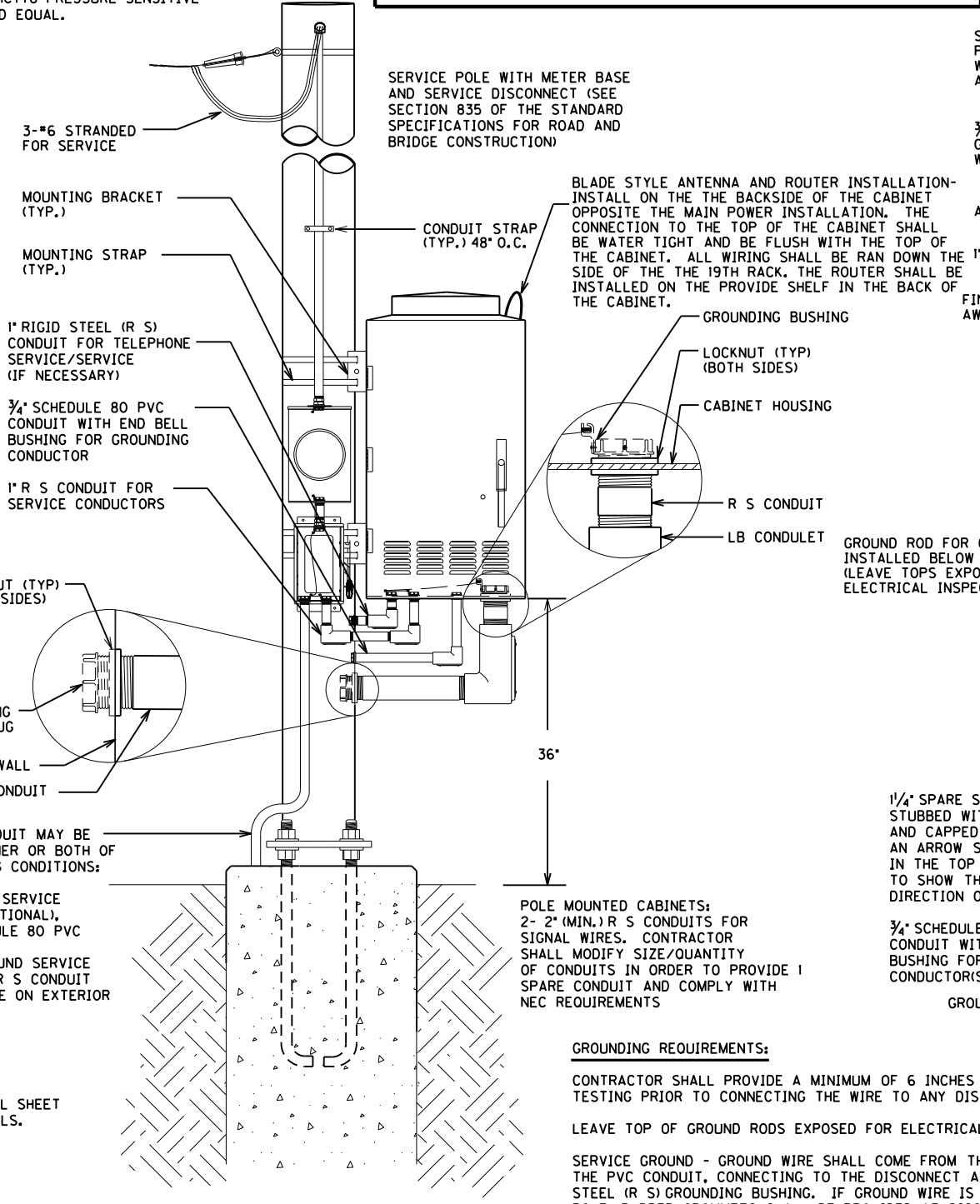


SPECIAL NOTE:
DISCONNECTS (SAFETY SWITCH) AND METER BASE SHALL BE UL RATED FOR COMMERCIAL USE. DISCONNECTS (SAFETY SWITCH) AND METER BASE SHALL BE ALUMINUM ENCLOSURE. THE CONTRACTOR SHALL BE RESPONSIBLE TO CALCULATE THE MAXIMUM AVAILABLE FAULT CURRENT FOR THE SERVICE EQUIPMENT THAT IS INSTALLED. THE CONTRACTOR SHALL SUPPLY A STICKER THAT WILL BE INSTALLED IN THE DISCONNECT WITH THE SYMMETRICAL RMS AMPERES AND THE DATE THAT THIS FAULT CURRENT IS CALCULATED. THE STICKER SHALL BE 4" LONG AND 4" WIDE AND BE METALCRAFT PLY425 PREM STYLEMARK LABEL (OR APPROVED EQUAL) WITH .007 THICKNESS, WITH UV WHITE POLYCARBONATE MATERIAL, AND WITH MC778 PRESSURE SENSITIVE ADHESIVE OR APPROVED EQUAL.

NOTES:
ALL CONDUITS USED FOR THE TELEPHONE, GROUNDING, SPARES, AND SERVICE (INCLUDING FLEX CONDUIT IF IT IS RUN INSIDE THE POLE) THAT ARE INSTALLED ON THE POLE AND/OR IN THE CABINET BASE ARE INCIDENTAL TO BID ITEM *493*. THIS INCLUDES PROVIDING A MINIMUM OF 24 INCHES OF CONDUIT PAST THE EDGE OF THE CONCRETE PAD.
ALL CONDUITS SHALL BE INSTALLED BETWEEN 4 TO 6 INCHES ABOVE THE CONCRETE PAD, AND THEY CANNOT EXCEED THE 6 INCH HEIGHT.
SERVICE WIRES FOR BASE MOUNTED CABINETS MAY BE INSTALLED IN FLEXIBLE CONDUIT FROM THE DISCONNECT TO THE 1" RIGID STEEL CONDUIT INSIDE THE POLE BASE. USE THE PROPER CONNECTIONS FOR TRANSITION FROM FLEXIBLE CONDUIT TO R S CONDUIT. FLEXIBLE CONDUIT SHALL NOT BLOCK THE HAND HOLE OR THE ABILITY TO ACCESS THE GROUNDING SYSTEM.

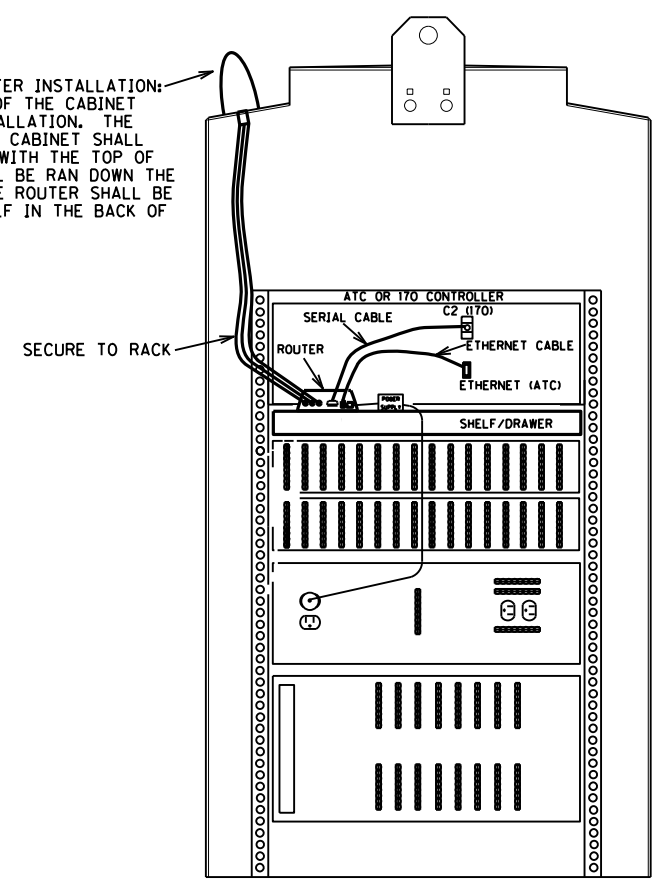
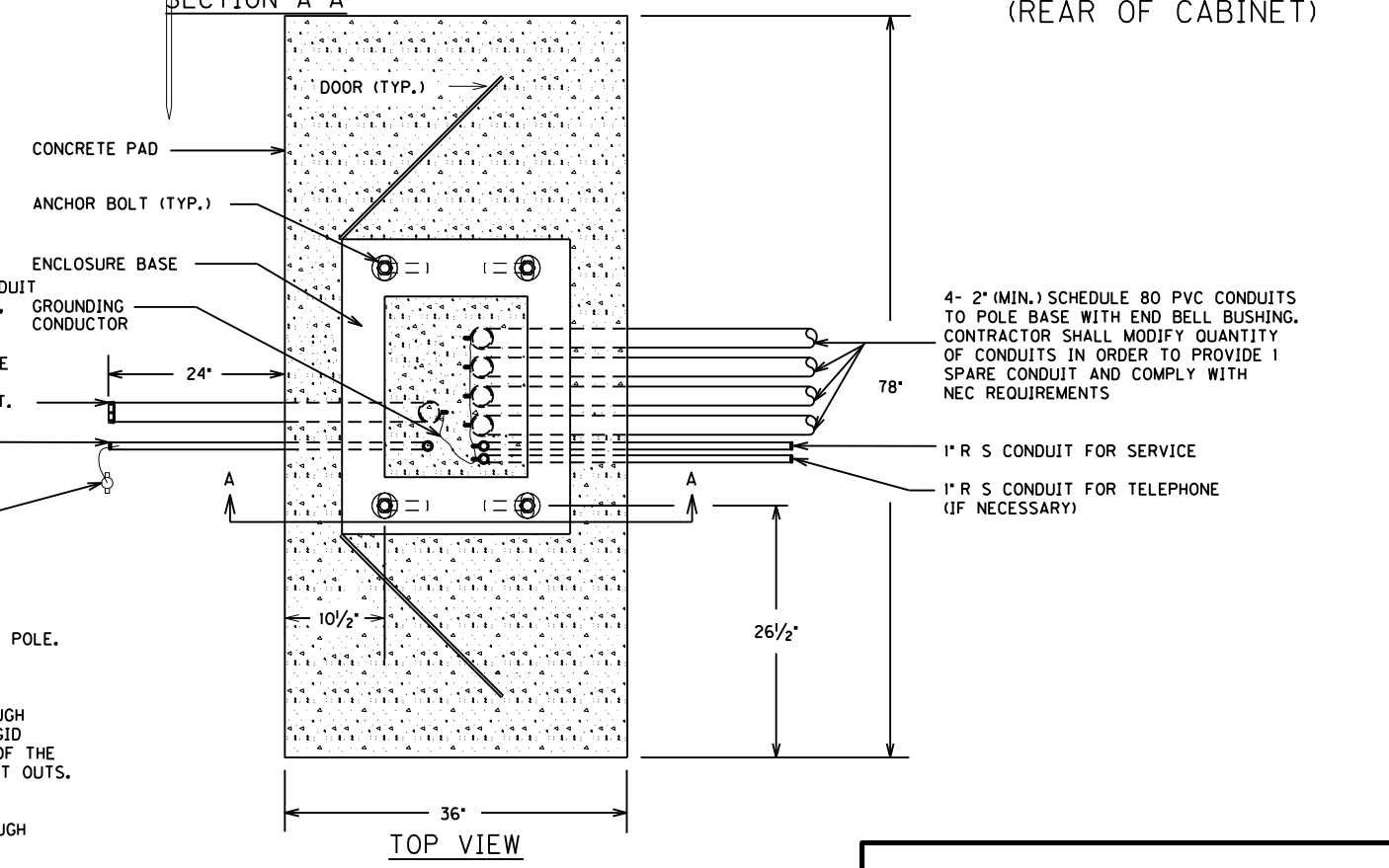


GROUND ROD FOR CABINET INSTALLED BELOW GROUND (LEAVE TOPS EXPOSED FOR ELECTRICAL INSPECTION)

1/4" SPARE SCHEDULE 80 PVC CONDUIT STUBBED WITH END BELL BUSHING, AND CAPPED AT BOTH ENDS. AN ARROW SHALL BE ETCHED IN THE TOP OF THE CABINET BASE TO SHOW THE LOCATION/ DIRECTION OF THE SPARE CONDUIT.

3/4" SCHEDULE 80 PVC CONDUIT WITH END BELL BUSHING FOR GROUNDING CONDUCTOR(S)

GROUND ROD



ROUTER INSTALLATION (REAR OF CABINET)

GROUNDING REQUIREMENTS:

CONTRACTOR SHALL PROVIDE A MINIMUM OF 6 INCHES OF GROUND WIRE FOR TESTING PRIOR TO CONNECTING THE WIRE TO ANY DISCONNECT, CABINET OR POLE.
LEAVE TOP OF GROUND RODS EXPOSED FOR ELECTRICAL INSPECTION.
SERVICE GROUND - GROUND WIRE SHALL COME FROM THE GROUND ROD THROUGH THE PVC CONDUIT, CONNECTING TO THE DISCONNECT AND THEN TO EACH RIGID STEEL (R S) GROUNDING BUSHING. IF GROUND WIRE IS RUN ON THE INSIDE OF THE POLE, RUBBER GROMMETS SHALL BE PROVIDED AT DISCONNECT AND POLE CUT OUTS. THEY SHALL BE INCIDENTAL TO BID ITEM *493*.
CABINET GROUND - GROUND WIRE SHALL COME FROM THE GROUND ROD THROUGH THE PVC CONDUIT, CONNECTING TO THE CABINET GROUND BUS.

SEE POLE BASE DETAIL SHEET FOR GROUNDING DETAILS.

STEEL POLE MOUNT ENCLOSURE

PAD MOUNT ENCLOSURE

CONTROLLER CABINET AND ANTENNA/ROUTER DETAIL

FILE NAME: C:\PWORK\YED.SWANSEGAR\DMS28756\03-CABINET BASE (CA).DGN
 USER: ted.swansegar
 DATE PLOTTED: January 30, 2018
 E-SHEET NAME:
 MicroStation v8.11.7.443
 5/30/2017