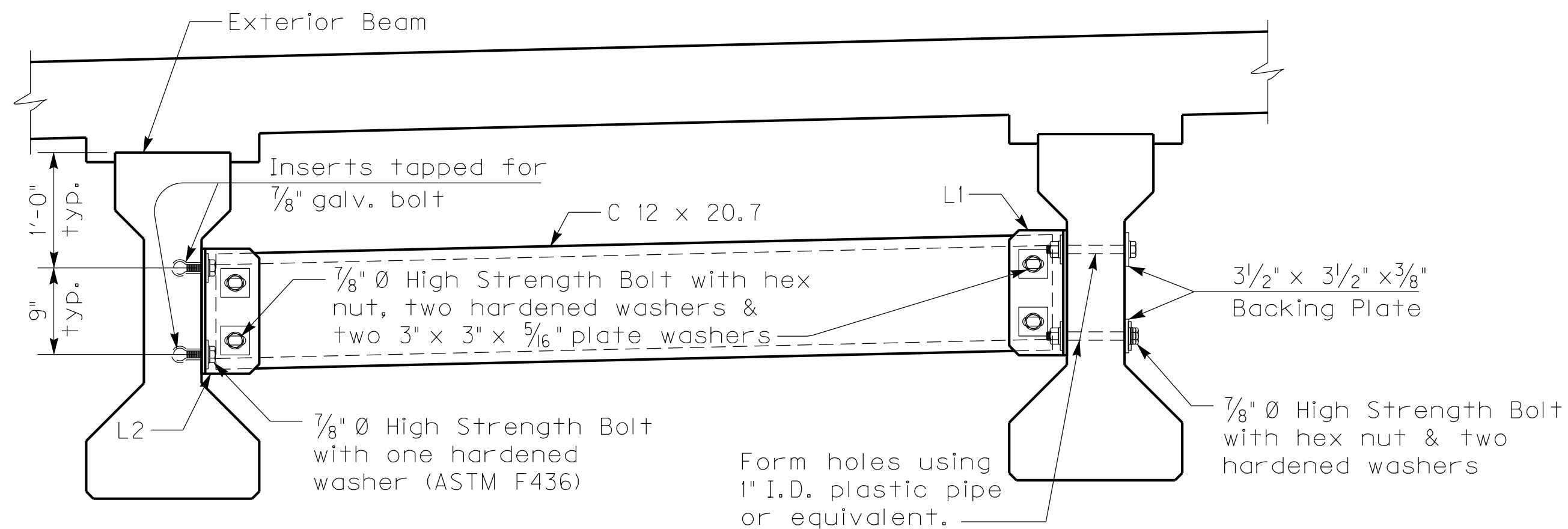


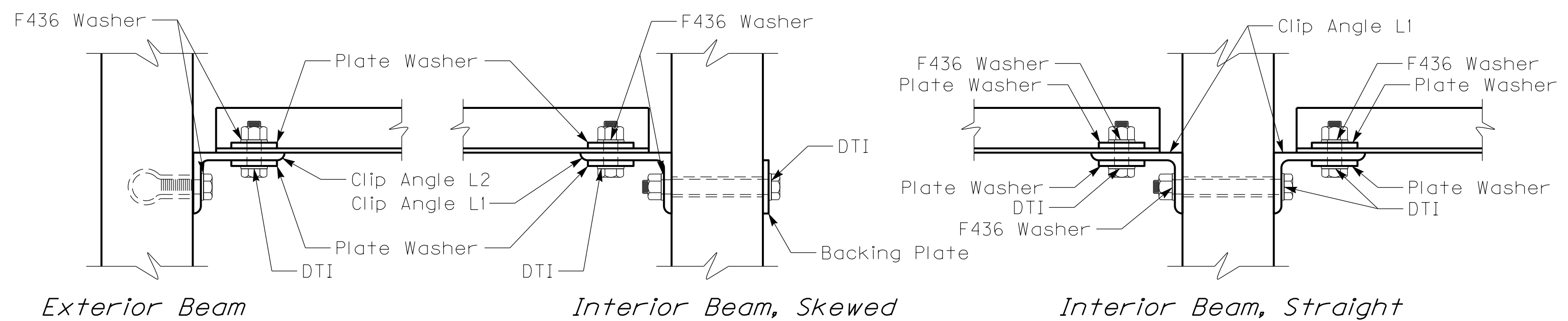
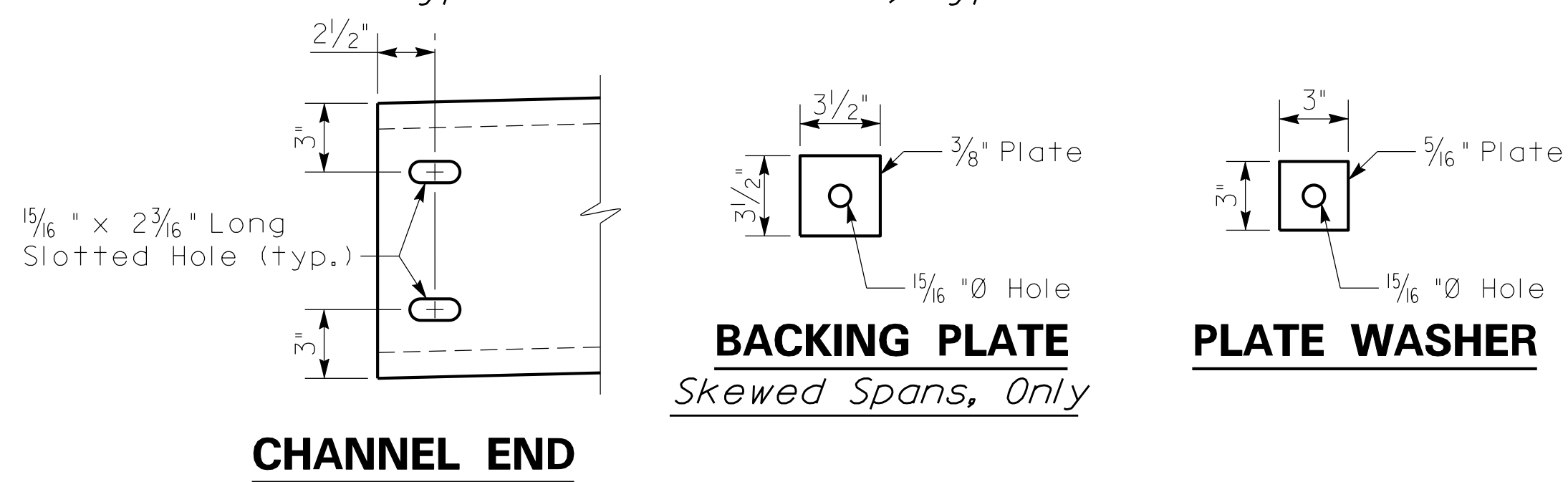
INTERMEDIATE DIAPHRAGM

~Typical for 0° Skew PCI, Type 2 Beams~

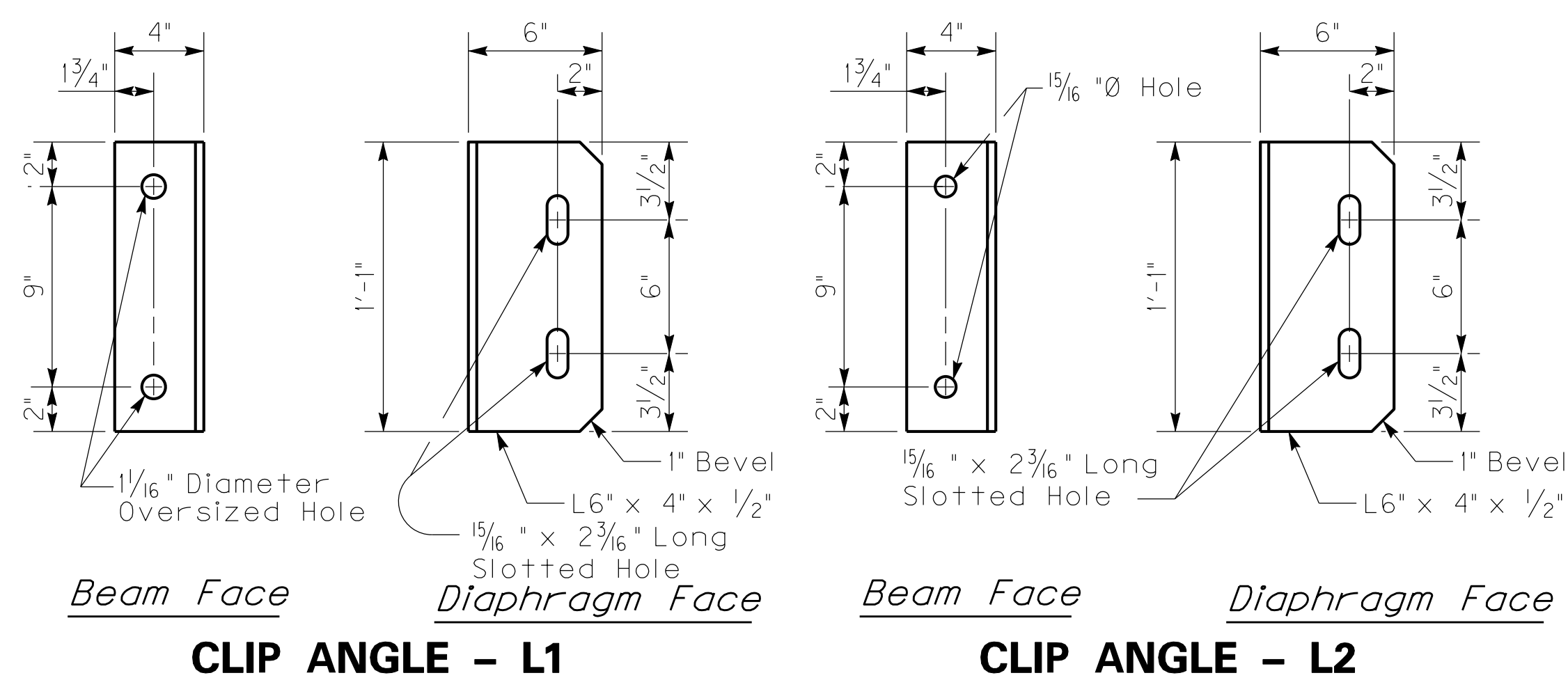


INTERMEDIATE DIAPHRAGM

~Typical for Skewed PCI, Type 2 Beams~



CONNECTION DETAILS



Diaphragm Notes

CONNECTIONS: Ensure all bolted connections are ASTM A325, 7/8 inch diameter high strength bolts, nuts, and washers, mechanically zinc coated in accordance with AASHTO M298, for Class 50. Install all high strength bolted field connections using "direct tension indicators" (DTI's) in accordance with the Standard Specifications and ASTM F959. Ensure all DTI's are mechanically zinc coated. Show installation details of the DTI's on the shop plans. Place DTI's under the bolt head.

STRUCTURAL STEEL: Ensure plates, angles, and channels conform to ASTM A36 or A572 and galvanized after fabrication.

SHOP DRAWINGS: Show the location of all inserts and holes on the precast beam shop drawings. Submit shop drawings for the steel diaphragms to the Division of Structural Design for approval.

DIAPHRAGMS: Erect the diaphragms the same day that the precast beams are placed on the substructure. Include the cost of all materials and labor required to fabricate and erect the diaphragms in the bid for Precast Beams.

REVISION		DATE
DATE:	CHECKED BY	
DESIGNED BY:		
DETAILED BY:		
Commonwealth of Kentucky		
DEPARTMENT OF HIGHWAYS		
COUNTY		
ROUTE	CROSSING	
PREPARED BY		SHEET NO.
Division of Structural Design		DRAWING NO.

ITEM NUMBER

FILE NAME: USERNAME: DATE: SHEET LOCATION: