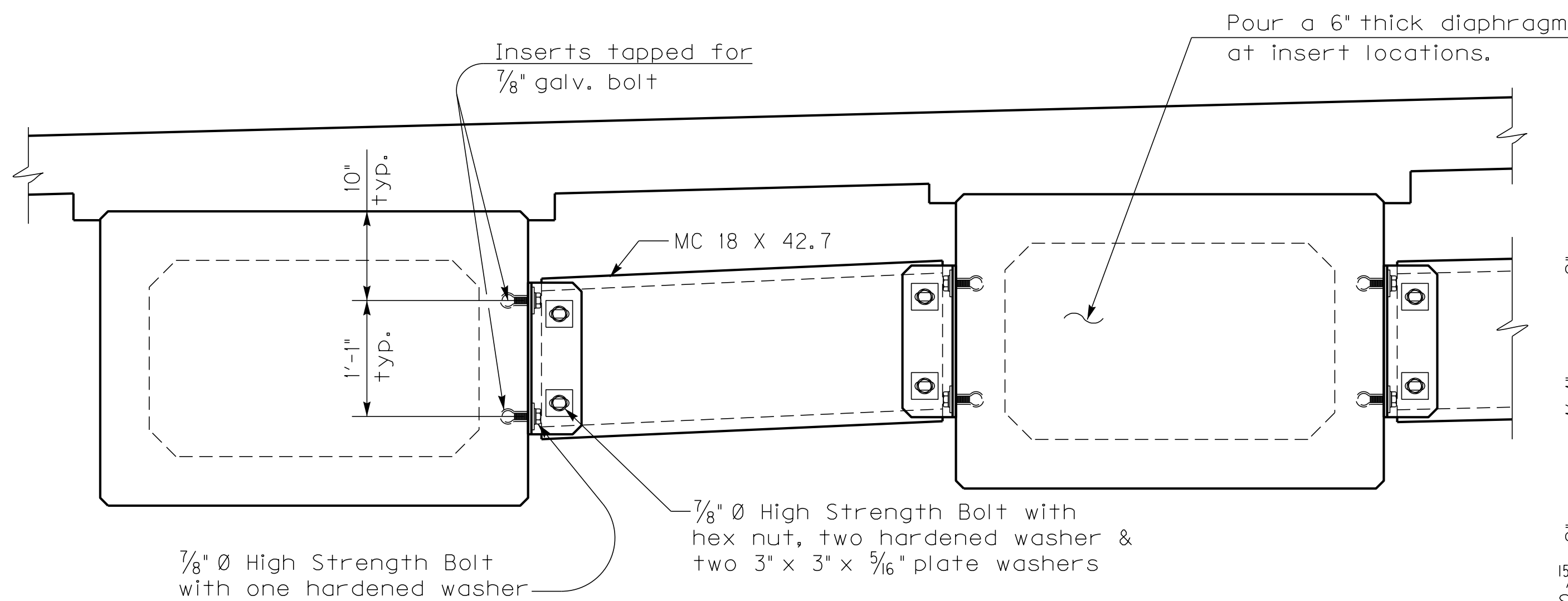


FILE NAME: H:\Resources\Base_Sheets\Diaphragms\English\Current\BoxBeams.dgn

USER: earl.w.downey
DATE PLOTTED: 26-MAY-2015

E-SHEET NAME:

MicroStation v8.11.7.180

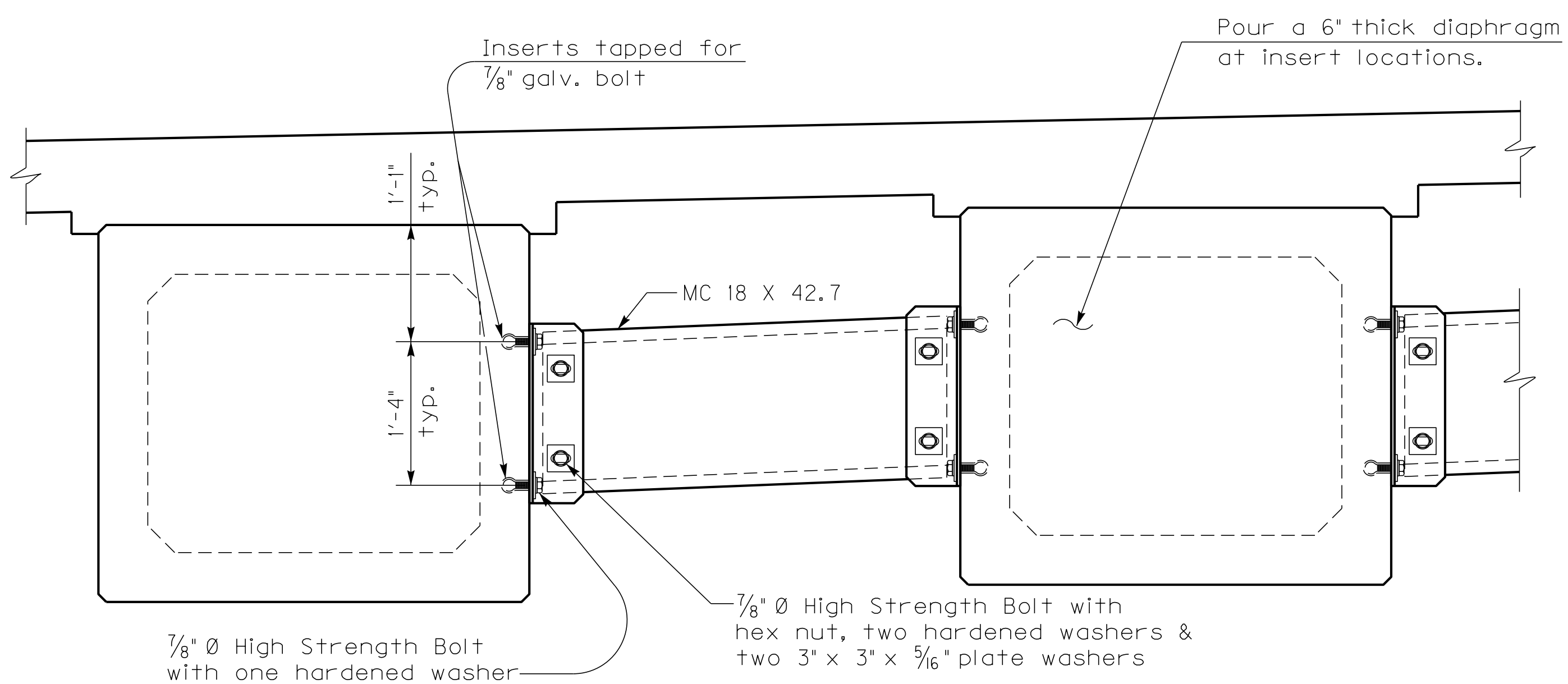


7/8" \emptyset High Strength Bolt with one hardened washer

7/8" \emptyset High Strength Bolt with hex nut, two hardened washer & two 3" x 3" x 5/16" plate washers

INTERMEDIATE DIAPHRAGM

~Typical for SB-33 Beams~

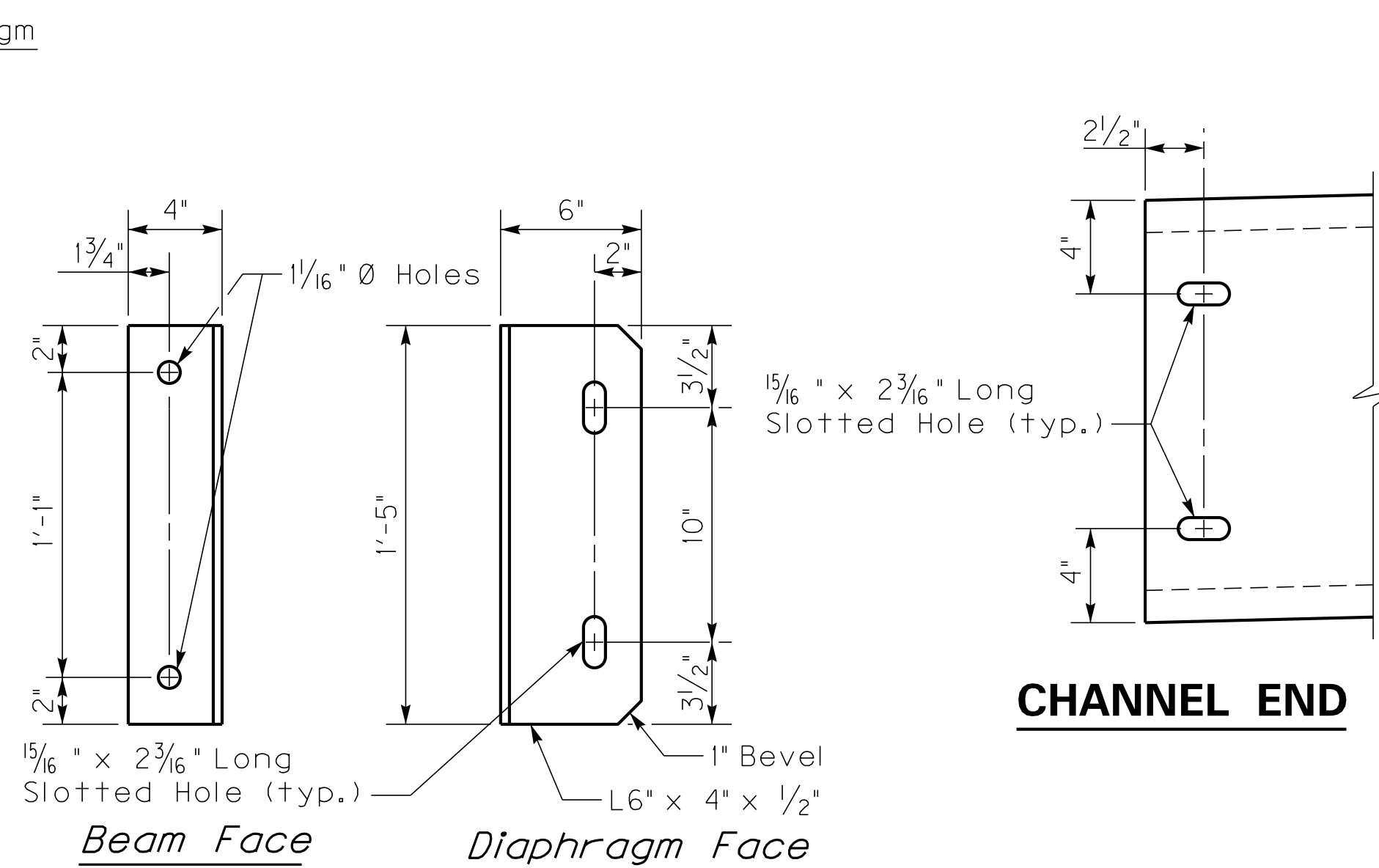


7/8" \emptyset High Strength Bolt with one hardened washer

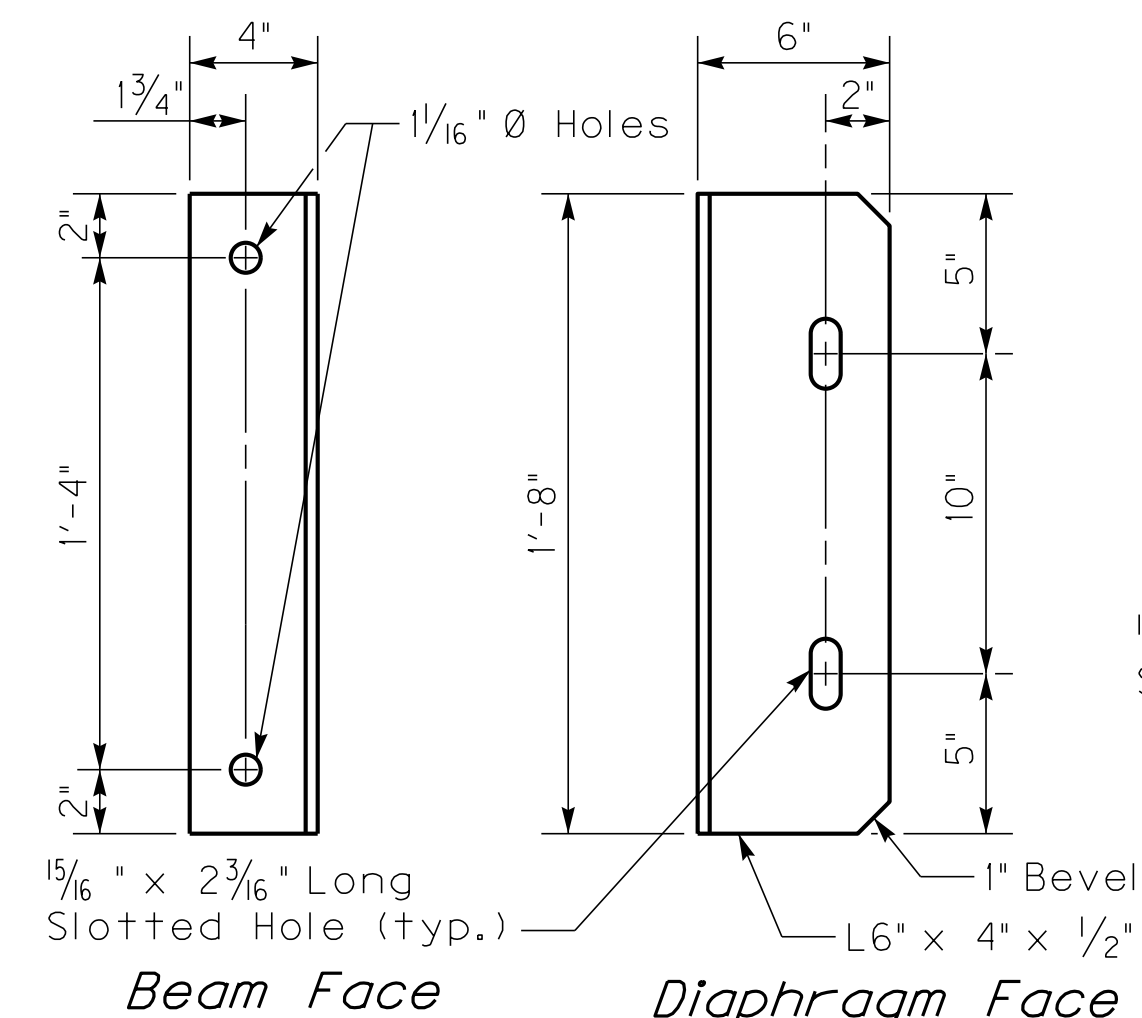
7/8" \emptyset High Strength Bolt with hex nut, two hardened washers & two 3" x 3" x 5/16" plate washers

INTERMEDIATE DIAPHRAGM

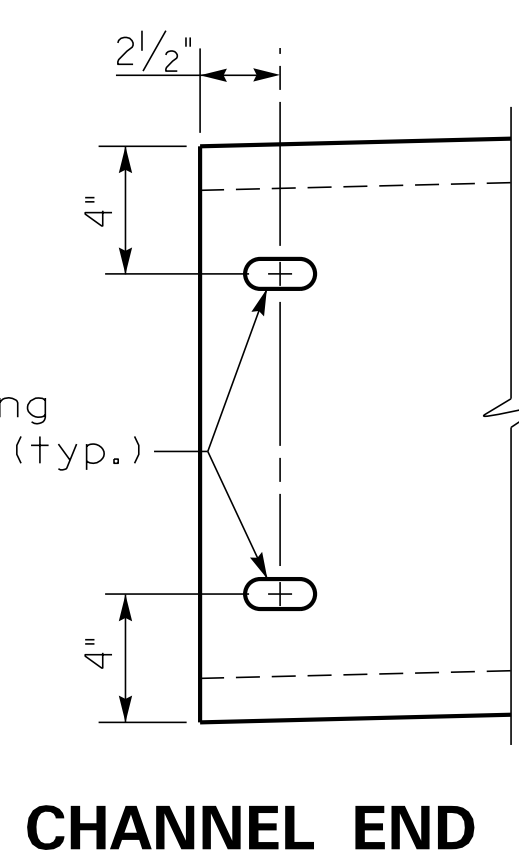
~Typical for SB-42 Beams~



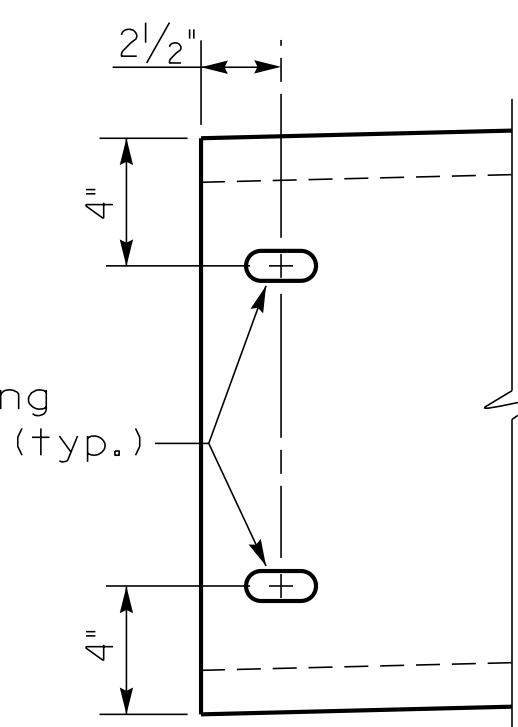
CLIP ANGLE



CLIP ANGLE



CHANNEL END



CHANNEL END

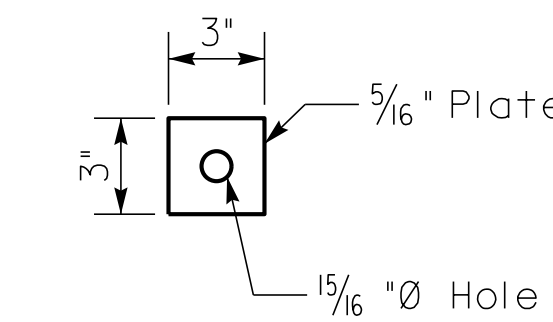


PLATE WASHER

Use ONLY the details that apply to each particular project.

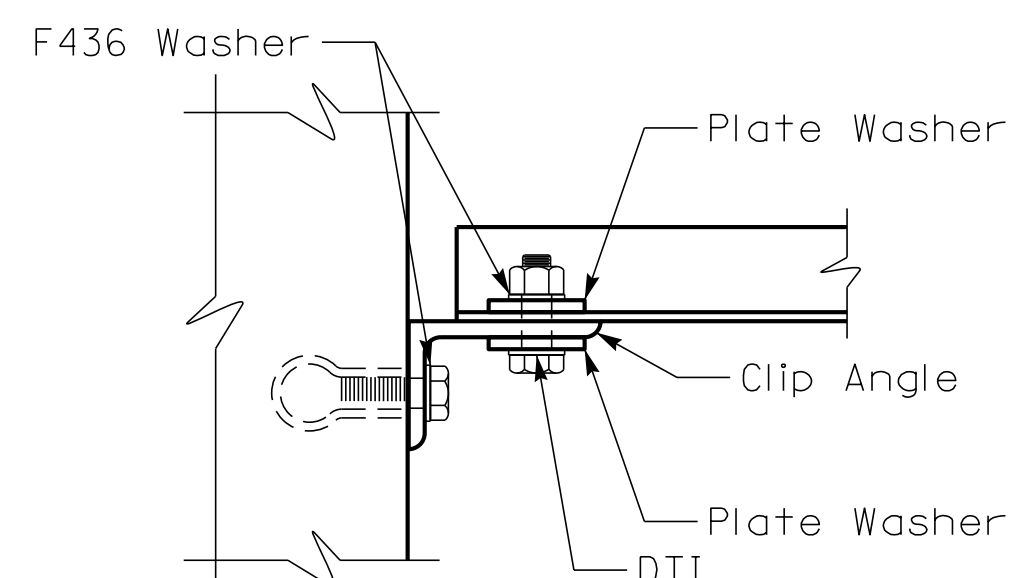
Diaphragm Notes

CONNECTIONS: Ensure all bolted connections are ASTM A325, 7/8 inch diameter high strength bolts, nuts, and washers, mechanically zinc coated in accordance with AASHTO M298, for Class 50. Install all high strength bolted field connections using 'direct tension indicators' (DTI's) in accordance with the Standard Specifications and ASTM F959. Ensure all DTI's are mechanically zinc coated. Show installation details of the DTI's on the shop plans. Place DTI's under the bolt head.

STRUCTURAL STEEL: Ensure plates, angles, and channels conform to ASTM A36 or A572 and galvanized after fabrication.

SHOP DRAWINGS: Show the location of all inserts and holes on the precast beam shop drawings. Submit shop drawings for the steel diaphragms to the Division of Structural Design for approval.

DIAPHRAGMS: Erect the diaphragms the same day that the precast beams are placed on the substructure. Include the cost of all materials and labor required to fabricate and erect the diaphragms in the bid for Precast Beams.



CONNECTION DETAILS

REVISION		DATE
DATE:	CHECKED BY:	
DESIGNED BY:		
DETAILED BY:		
Commonwealth of Kentucky DEPARTMENT OF HIGHWAYS		
COUNTY		
ROUTE	CROSSING	
ITEM NUMBER		PREPARED BY
		SHEET NO.
		DRAWING NO.