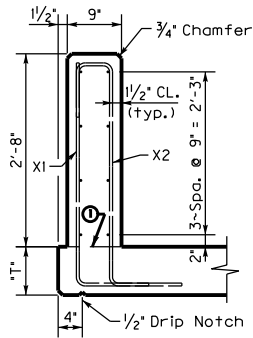
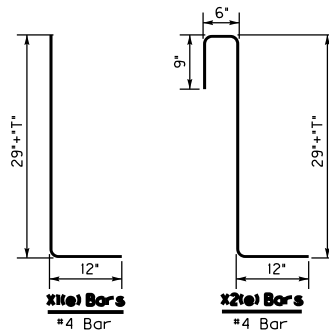


**ELEVATION**

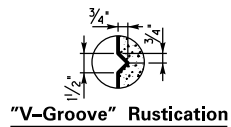


**TYPICAL BARRIER SECTION**

⓪ Mandatory roughened construction joint. Concrete above this joint is to be placed after slab has been properly cured and included in the bid for Rail System.



Note: Open joints are not required.



**General Notes**

**CONCRETE:** Use Class AA Concrete throughout.

**MEASUREMENT:** The linear foot bid for the barrier is measured along the roadway gutterline. Include all reinforcement shown and all concrete above the top of slab in the bid item for Rail System.

**REINFORCEMENT:** All reinforcement shown on this sheet is to be epoxy coated ASTM A615 Grade 60. Use stirrup bend diameters for all bent bars. Straight reinforcement is to be Size #4 and lapped 2'-2" when necessary.

KENTUCKY  
 DEPARTMENT OF HIGHWAYS

32" VERTICAL FACE  
 RAILING SYSTEM

STANDARD DRAWING NO. BHS-009-01

SUBMITTED *Mark Nite* 12-02-11  
 DIRECTOR DIVISION OF STRUCTURAL DESIGN DATE  
 APPROVED *[Signature]* 12-02-11  
 STATE HIGHWAY ENGINEER DATE