

S106 Presentation for KY 1681 and Alexandria Drive

Project Item Number: 7-912

County and Route: Fayette, KY 1681 and Alexandria Dr.

Project Description: Reconstruct the intersection to improve safety. A roundabout was the selected alternative. The project is in a historic district.

Project Manager Contact information (Cabinet): Robin Sprague, KYTC- D7, 859-246-2355

Project Manager Contact Information (Consultant): N/A

Other contacts: Phil Logsdon, KYTC-D7, 859-246-2355

Approximate dates: November 2005

Comments (number of people reached, effectiveness of the technique, what you would do differently, etc.): This presentation was used for the second Section 106 Consulting Parties meeting. There were approximately 20 consulting parties at the meeting. The presentation focuses on this project, but parts of it address the Section 106 Consulting Party process and the presentation could be adapted to any project.

KY 1681(Old Frankfort Pike) and Alexandria Drive

Item # 7-912.00



The National Historic Preservation Act was enacted in 1966 in order to provide an orderly process to handle cultural resources that might be jeopardized by Federal undertakings.

Section 106 of this Act requires federal agencies to “take into account” the effects of their actions on historic properties. This includes “any district, site, building, structure, or object that is included in or eligible for inclusion in the National Register.”

Section 106 Process Flow Chart

An “undertaking” is any activity using Federal funds, requiring Federal permits, or involving Federal properties.

Identify Historic Properties



Assess Adverse Effects



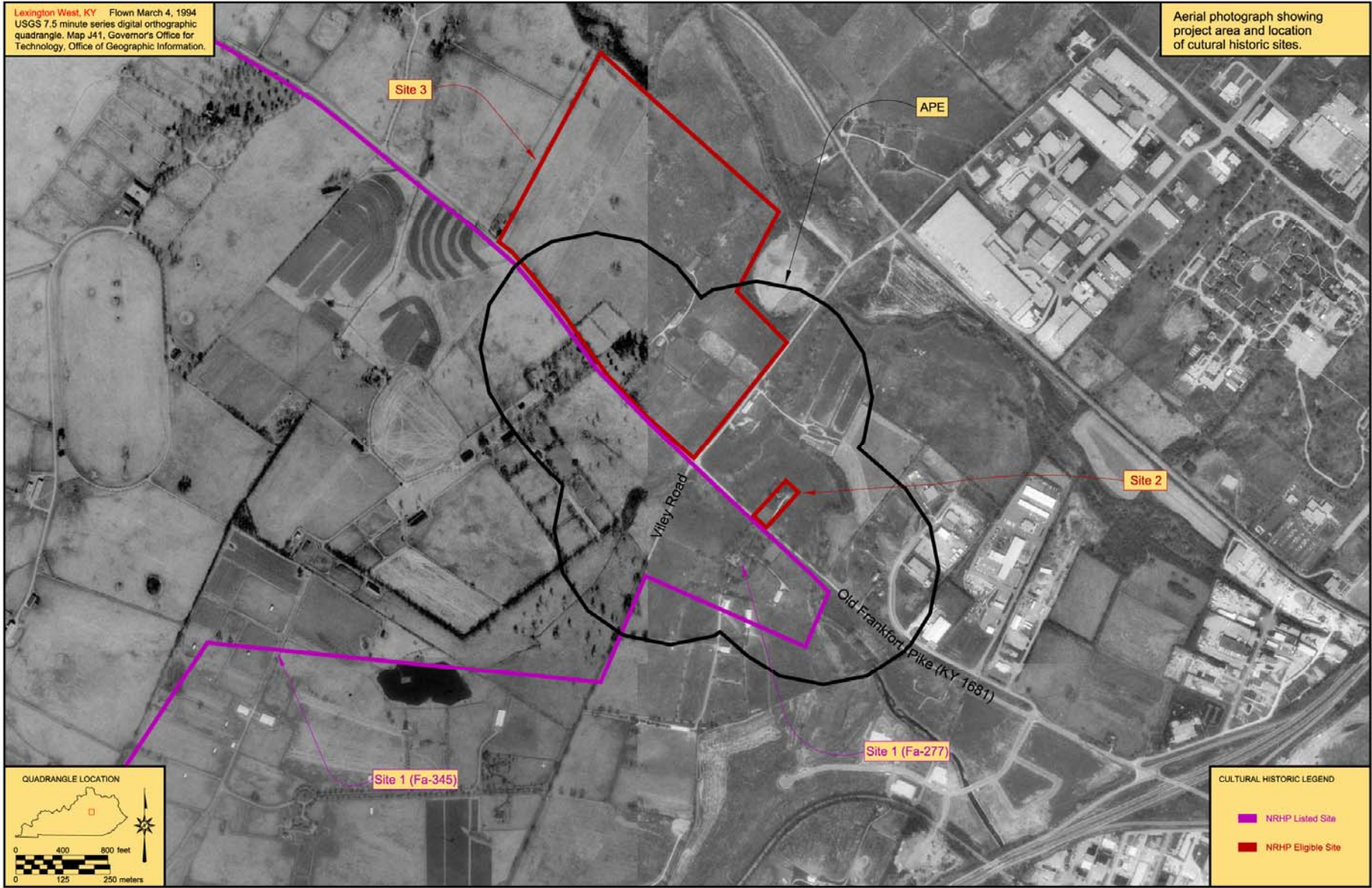
Resolve Adverse Effects

Continue consultation

Develop Memorandum of Agreement

Lexington West, KY Flown March 4, 1994
USGS 7.5 minute series digital orthographic
quadrangle. Map J41. Governor's Office for
Technology, Office of Geographic Information.

Aerial photograph showing
project area and location
of cultural historic sites.



Site 1

West Fayette County Rural Historic District



Circa 1835



Reassembled 1912



FA 277 - Listed
Sherley's Crest

(southeast corner of intersection)

Site includes two houses, joined, two barns, two stables, and a pair of stone entry piers. All contribute to the site's integrity.

Site 1

West Fayette County Rural Historic District



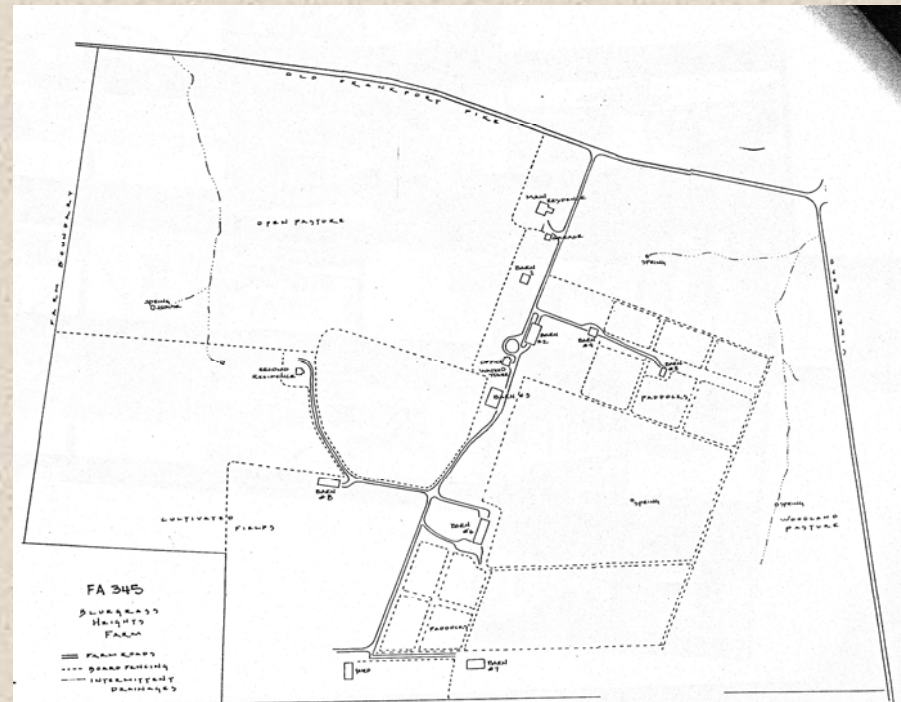
Turn of the 20th century



FA 345 - **Listed** Bluegrass Heights Farm

(southwest corner of intersection)

Site includes main house, fourteen outbuildings, a tenant house, and a pair of stone gateposts.



Site 1

West Fayette County Rural Historic District



Additional Contributing Features Within the APE

- Rock fence along north side of KY 1681 (Old Frankfort Pike) (@900') and along west side of Alexandria (@67').
 - Two small curved stone walls on the east side of Alexandria.
- Remnant of woodland pasture on property associated with Site 2 (northeast corner of intersection).
 - Site includes Old Frankfort Pike

Site 1

West Fayette County Rural Historic District



Adverse Effects:

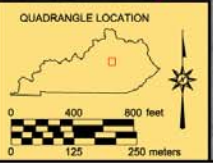
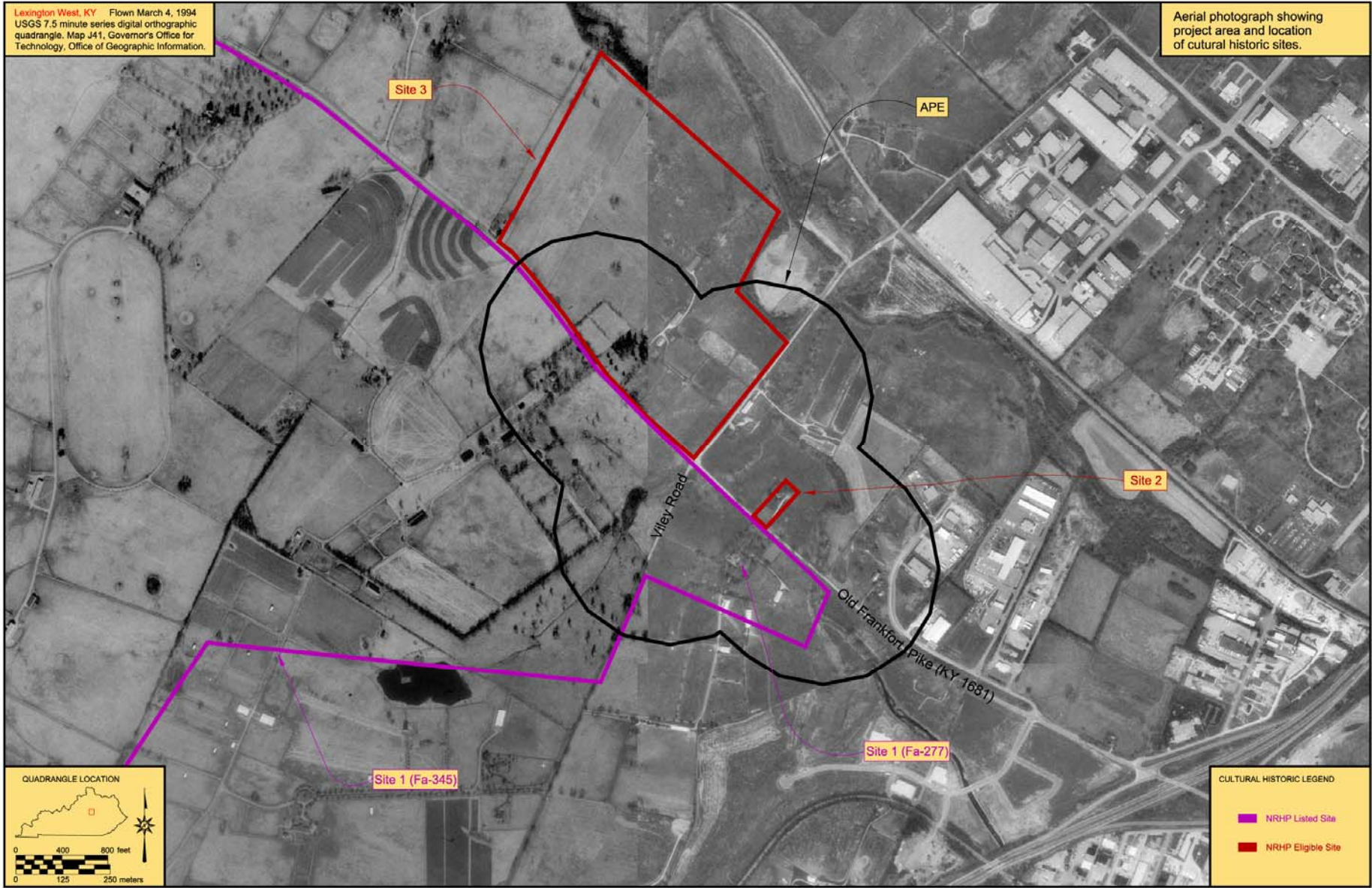
Gateposts/pillars at Sherley's Crest (15FA277)

Stone walls adjacent to intersection

1.86 – 2.19 Acres acquired (on three parcels)

Lexington West, KY Flown March 4, 1994
USGS 7.5 minute series digital orthographic
quadrangle. Map J41. Governor's Office for
Technology, Office of Geographic Information.

Aerial photograph showing
project area and location
of cultural historic sites.



CULTURAL HISTORIC LEGEND

- NRHP Listed Site
- NRHP Eligible Site

Site 2



Early to mid 20th century



Associated farm complex

FA 608 - **Eligible**

1 ½ story Tudor Revival House

(northeast corner of intersection)

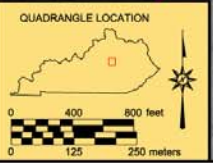
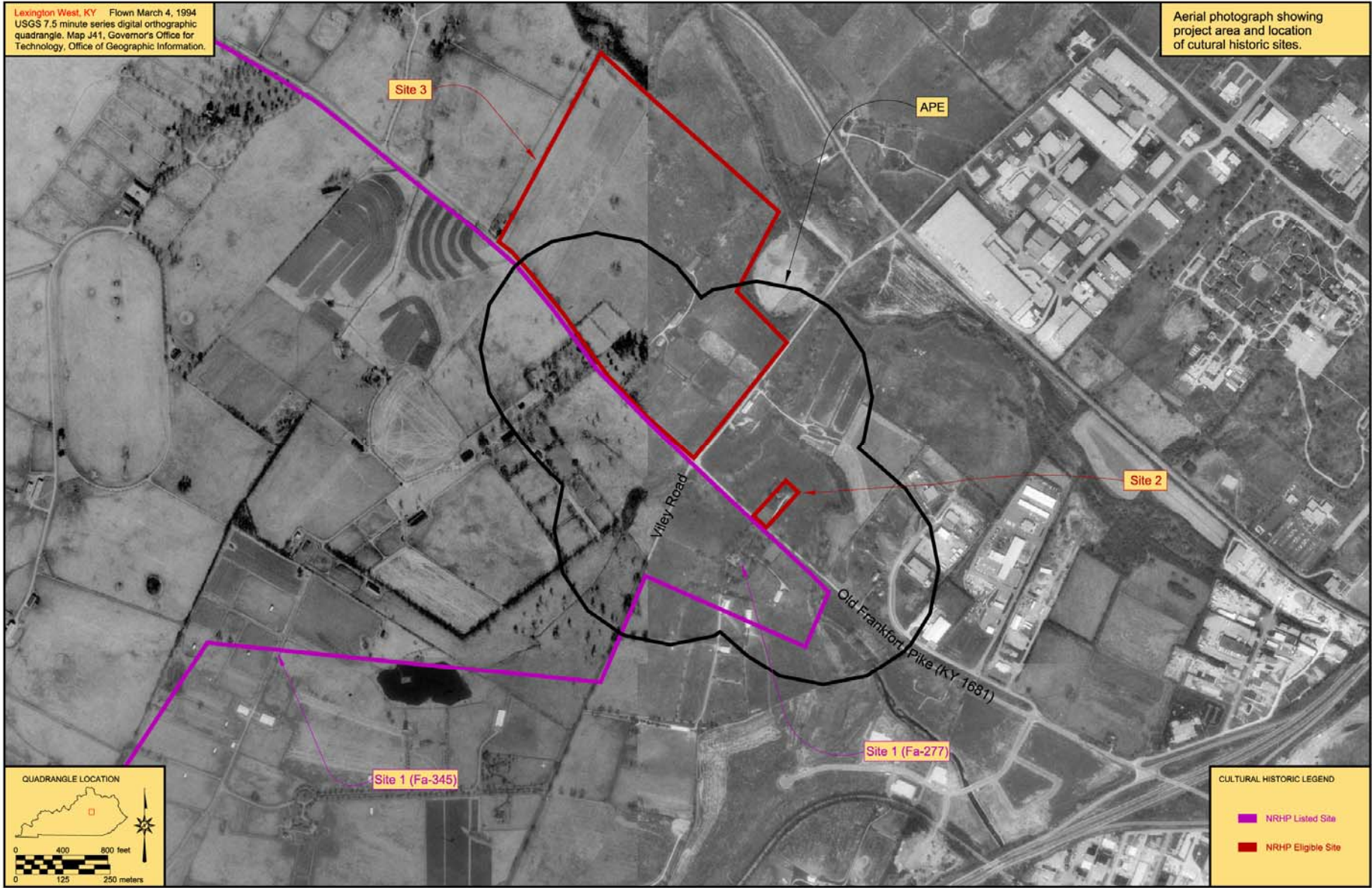
Site includes main house, garage and farm complex: two tenant houses, a springhouse, and three barns.

Adverse Effects:

Frontage acquisition (0.20-0.21 acres)

Lexington West, KY Flown March 4, 1994
USGS 7.5 minute series digital orthographic
quadrangle. Map J41. Governor's Office for
Technology, Office of Geographic Information.

Aerial photograph showing
project area and location
of cultural historic sites.



Site 3



FA 811 - **Eligible** Farm Complex

(northwest corner of intersection)

Site includes main house (non-historic), garage and farm complex: tenant house, five barns, and a small office. Stonewall along Old Frankfort Pike and Alexandria also associated.

Adverse Effects:

Stone Fence Impacts (717' – 845")
0.77-1.01 Acres

Resolving Adverse Effects

Minimize footprint

grass shoulders

ditch width

temporary construction easements

Rebuild stone fences/retaining walls

Plant trees as appropriate

Rebuild entrance pillars at Sherley's Crest

Decorative treatment to culvert headwalls

Street light design

Enhancements?

Next Steps

Develop Memorandum of Agreement to resolve adverse effects

Complete final environmental document

Develop detailed mitigation plans according to MOA and
incorporate into final plans