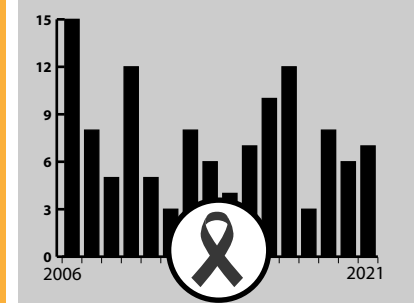
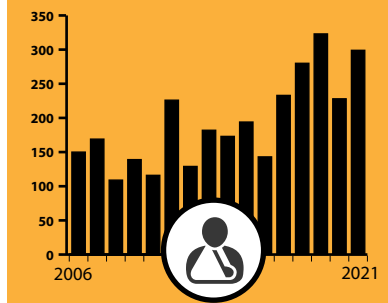
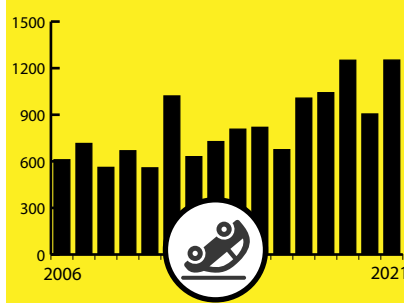


Kentucky Work Zone Statistics

Year	CRASHES	INJURIES	FATALITIES
2021	1,252	299	7
2020	905	228	6
2019	1,251	323	8
2018	1,042	280	3
2017	1,007	233	12
2016	675	143	10
2015	819	194	7
2014	807	173	4
2013	727	182	6
2012	630	129	8
2011	1,021	226	3
2010	558	116	5
2009	668	139	12
2008	561	109	5
2007	715	169	8
2006	610	150	15



Work zones are a sign that crews are hard at work to make travel safer and better. A work zone is any place a crew member is working. Protect workers and other drivers on the road by slowing down and driving alert every time you're behind the wheel.

Work zone safety is in your hands.



DID YOU KNOW?
Motorists and their passengers
are most likely to be the victims
in work zone incidents.

10 TIPS

FOR DRIVING SAFELY IN WORK ZONES



Be alert.

Watch for speed limit reductions, narrowing lanes, changing traffic patterns and – most importantly - workers.



Pay attention.

Don't text or talk on the phone and avoid taking your hands off the wheel.



Respect the posted speed limits.



Keep traffic moving.

Safely merge as soon as safely possible, allowing traffic to flow smoothly.



Be patient.

Driving 45 mph versus 55 mph through a five mile work zone may only add 1.2 minutes to your trip. Speeding and aggressive driving are major causes of work zone crashes.



Keep a safe distance.

Allow space on all sides of your vehicles and maintain a safe following distance. Rear-end collisions are the most common type of work zone crash.



Respect the flaggers and obey their guidance.

A flagger has the same authority as a regulatory sign, so you can be cited for disobeying his or her directions.



Follow instructions on construction signage.

Signs are carefully selected to give drivers accurate information and important warnings.



Know before you GO.

Check out GOKY.ky.gov or use the free WAZE app for traffic and travel information. Select alternate routes if possible to avoid work zones. If the work zone cannot be avoided, expect delays and allow extra travel time.



Stay calm.

Remember that the construction crews are working to make the road better for you!