

A REQUEST FOR PROPOSAL FOR PROFESSIONAL SERVICES CONTRACT

Department of Highways
Professional Services Procurement Bulletin 2025-12
Barren | 3-80300 | LN-9008

This document constitutes a Request for Proposals for a Professional Service Contract from qualified individuals and organizations to furnish those services as described herein for the Commonwealth of Kentucky, Department of Highways.

I. PROJECT DESCRIPTION

County -	Barren
Route -	LN-9008
Item No. -	3-80300.00
Project Description -	Reduce congestion and increase mobility on US-31E from Aberdeen Drive to Trojan Trail, including reconstruction of the interchange with LN-9008.

II. PROJECT INFORMATION

Project Manager -	Brett Duncan, P.E.
User Division -	Planning
Approximate Fee -	\$450,000 Planning and Environmental Linkages Study (Lump Sum)
Project Funding -	SPP (State Funds)
Project Length -	Approximately 0.6 miles

III. PURPOSE AND NEED

The existing LN-9008/US-31E interchange at Exit 11 and the US-31E/Trojan Trail intersection experience congestion and mobility issues, particularly during peak school pickup and drop-off times. Current ramp configurations prevent signal coordination on the mainline of US-31E. Both LN-9008 and US-31E are AAA truck routes used for the transportation of freight.

The objective of this study is to identify potential alternatives to reduce congestion and increase safe mobility on US-31E from Aberdeen Drive to Trojan Trail by potentially modifying the intersections, including the reconstruction of the interchange with LN-9008.

IV. DBE GOAL

The Consultant team may include a DBE Participation Plan with their Response to Announcement to help the Department meet the 11.95% DBE goal established by FHWA. The plan would demonstrate how DBE companies will be mentored or used to assist in the area(s) pertaining to this contract. If included, an additional page will be allowed in the Project Approach (Section 7) to

exhibit this plan. No additional points will be provided in the Evaluation Factors for the DBE Participation Plan.

V. SCOPE OF WORK

The selected Consultant will be required to provide Planning and Environmental Services. The tasks of the Planning and Environmental Linkages (PEL) Study include developing preliminary alternatives, performing a traffic engineering analysis in accordance with Design Memo 03-11, reviewing stage 1 analysis/alternatives and conducting stage 2 analysis in accordance with the KYTC Intersection Control Evaluation (ICE) Guidance, preparing engineering studies, identifying appropriate typical sections and any utility impacts, performing preliminary drainage design, developing dependable cost estimates, and conducting and preparing documents for public meetings. The above items will be summarized in a PEL Study report and completion of the PEL Checklist.

This project may be advanced to Preliminary Engineering upon the completion of the PEL Study with a Contract Modification. This project may be further advanced to Final Design upon the completion of Preliminary Engineering with a Contract Modification. The selected Consultant will then be required to provide engineering services to perform Final Roadway and Structural Design, including the preparation of any design studies, drainage design, right-of-way plans, construction plans, traffic control plans, and cost estimates as well as any other services that KYTC chooses not to perform with in-house forces.

VI. SPECIAL INSTRUCTIONS

The Department may retain any of the advertised services to be performed by in-house state forces.

Instructions for Response to Announcement can be found at:

<https://transportation.ky.gov/ProfessionalServices/Pages/Respond-to-an-Announcement.aspx>

VII. AVAILABLE STUDIES

[DNA Study – Barren | 3-80300 | LN-9008/US-31E](#)

VIII. METHOD OF DESIGN

The selected Consultant shall utilize the most recent CADD Standards for Highway Plans Policy in the development of the highway plans. Refer to the 2022 CADD Standards for ORD V4.4 Project Development Memo for information pertaining to the latest CADD Standards and plan submittal.

IX. ENVIRONMENTAL SERVICES

Any necessary Environmental Services are expected to be provided by the Consultant. Based on preliminary discussion with the project team and all currently available environmental information for the proposed project location, we anticipate the required environmental document to be no

higher than a Categorical Exclusion Level 1. Prequalification of various Environmental Services are required to be identified in the Consultant's Response to Announcement.

The final environmental document may be elevated (or reduced) to a different level of environmental documentation if environmental investigation leads to an alternative conclusion or changes in ROW occur. Prequalification of various Environmental Services are required to be identified in the Consultant's Response to Announcement.

X. PHOTOGRAMMETRIC SERVICES

The Consultant may use the Statewide Elevation data and Aerial photography that can be found at the following link [KyFromAbove - Kentucky's Aerial Photography & Elevation Data Program](#) to complete the Planning Environmental Linkage.

If the project progresses to the Preliminary Engineering phase the Consultant will be required to obtain all surveying and mapping necessary to complete the project and will furnish manuscripts in ORD format. The selected Consultant shall supplement this information with conventional surveying as determined during project scoping.

XI. STRUCTURE DESIGN

Structure Design is not anticipated for the Planning and Environmental Linkages (PEL) study. If the Department chooses to advance the project (or portions thereof), the project advances to Final Design, and if the selected Consultant is retained for Final Design services, the selected Consultant shall do the necessary engineering services to submit to the KYTC an Advanced Situation Folder(s) for the appropriate structure(s). The selected Consultant may be responsible for any necessary Structure Design services. Structure Design of the proposed structure(s) may be added as a Contract Modification. Prequalification in Structure Design is not required to be identified in the Consultant's Response to Announcement. The selected Consultant must obtain the required qualifications before providing these services or bring a prequalified subconsultant at that time.

XII. GEOTECHNICAL SERVICES

The selected Consultant may provide all Geotechnical Services required for the project. The Preliminary Design contract may include preliminary geotechnical services to review available geological, mining, or other geotechnical information that could influence the selection of the preferred alternate. Geotechnical services necessary for the completion of Final Design may be added by contract modification at the appropriate time. At any time, if the Department has the capacity to provide these services, the Department may retain the advertised geotechnical services. Prequalification in Geotechnical Services is not required to be identified in the Consultant's Response to Announcement. The selected Consultant must obtain the required qualifications before providing these services or bring a prequalified subconsultant at that time.

XIII. TRAFFIC ENGINEERING

The Department is expected to provide all traffic projections and related information.

The selected Consultant will provide the analysis of the existing and proposed operations. Traffic

Signal Design and Lighting Design services, if necessary for the completion of Final Design, may be added by Contract Modification at the appropriate time. At any time, if the Department has the capacity to provide these services, the Department may retain the advertised traffic services.

XIV. UTILITIES

The selected Consultant shall acquire adequate information regarding existing utility features to identify existing utility facilities within the project area, document and confirm those that may be negatively impacted by the project. The selected Consultant shall bring attention any potential conflicts with existing utility facilities that may result in significant cost or time to relocate. The selected Consultant shall complete or contribute to a utility conflict matrix, documenting the existing utility facilities that may be impacted by the project. The Consultant shall document or confirm the following for each utility in the conflict matrix: type of utility, owner of utility, quantify the extent they may be impacted, potential impacts to project budget, potential impact to project schedule, confidence of utility location depicted, and recommendations for remedy.

The Department will provide a preliminary utility contact list, will provide all utility cost estimates, as well as coordinate the utility plans and relocation. The selected Consultant shall be responsible for verifying utilities involved, performing a level C/D locate for all utilities within the project corridor, and including the location, size, and type of utilities on the plans.

The selected consultant may be responsible for requesting B.U.D. locates and performing a level B locate for all utilities within the project corridor if the project progresses to the preliminary engineering phase.

The selected Consultant may be responsible for any necessary Subsurface Utility Engineering. Subsurface Utility Engineering may be added as a Contract Modification. Prequalification in Subsurface Utility Engineering is not required to be identified in the Consultant's Response to Announcement. The selected Consultant must obtain the required qualifications before providing these services or bring a prequalified subconsultant at that time.

XV. PREQUALIFICATION REQUIREMENTS

To respond to this project the Consultant must be prequalified in the following areas by the response due date of this advertisement:

ENVIRONMENTAL & UST SERVICES

- UST & Hazmat Preliminary Site Assessment (Phase 1)

ENVIRONMENTAL AQUATIC & TERRESTRIAL ECOSYSTEMS ANALYSIS

- Fisheries
- Botany
- Terrestrial Zoology
- Wetlands
- Freshwater Macroinvertebrates
- Water Quality

ENVIRONMENTAL ARCHAEOLOGY & OTHER SERVICES

- Air Quality Analysis

- Prehistoric Archaeology
- Socio-Economic Analysis
- Highway Noise Analysis
- Historic Archaeology
- Environmental Document Writing & Coordination
- Cultural-Historic Analysis
- Stream & Wetland Mitigation

ROADWAY DESIGN

- Rural Roadway Design
- Urban Roadway Design
- *Advanced Traffic Engineering Design & Modeling*(see note below)*
- *Surveying* (see note below)*

TRAFFIC ENGINEERING

- Traffic Engineering
- *Electrical Engineering Roadway Lighting* (see note below)*
- *Electrical Engineering Traffic Signals* (see note below)*

TRANSPORTATION PLANNING

- Traffic Forecasting
- Transportation Planning Engineering

Geotechnical Services* (see note below)

- *Geotechnical Engineering**
- *Geotechnical Drilling**
- *Geotechnical Laboratory Testing**

Structure Design* (see note below)

- *Standard Structures**
- *Spans Under 500 Feet**

Utility Design* (see note below)

- *Subsurface Utility Engineering**

** Note – These prequalifications are not required with the initial proposal as it is uncertain to the extent practicable if they are necessary. Should these services become necessary during the delivery of the project in this or future phases, the selected Consultant team must obtain the required qualifications before providing those services or bring on a prequalified subconsultant at that time.*

XVI. PROCUREMENT SCHEDULE

Dates other than Advertisement Date and Response Date are tentative and provided for information only.

- | | |
|----------------------------|---|
| • Advertisement Date: | June 10, 2025 |
| • Response Date: | July 2, 2025 by 4:30 PM ET (Frankfort Time) |
| • First Selection Meeting: | July 7, 2025 |
| • Final Selection: | July 23, 2025 |
| • Pre-Design Conference: | July 30, 2025 |

- Consultant Fee Proposal: August 8, 2025
- Contract Negotiations: August 20, 2025
- Notice to Proceed: September 10, 2025

XVII. PROJECT SCHEDULE

- Existing Conditions January 15, 2026
- Initial Alternatives April 15, 2026
- Refined Alternatives July 15, 2026
- Submit Final Report October 15, 2026

XVIII. EVALUATION FACTORS

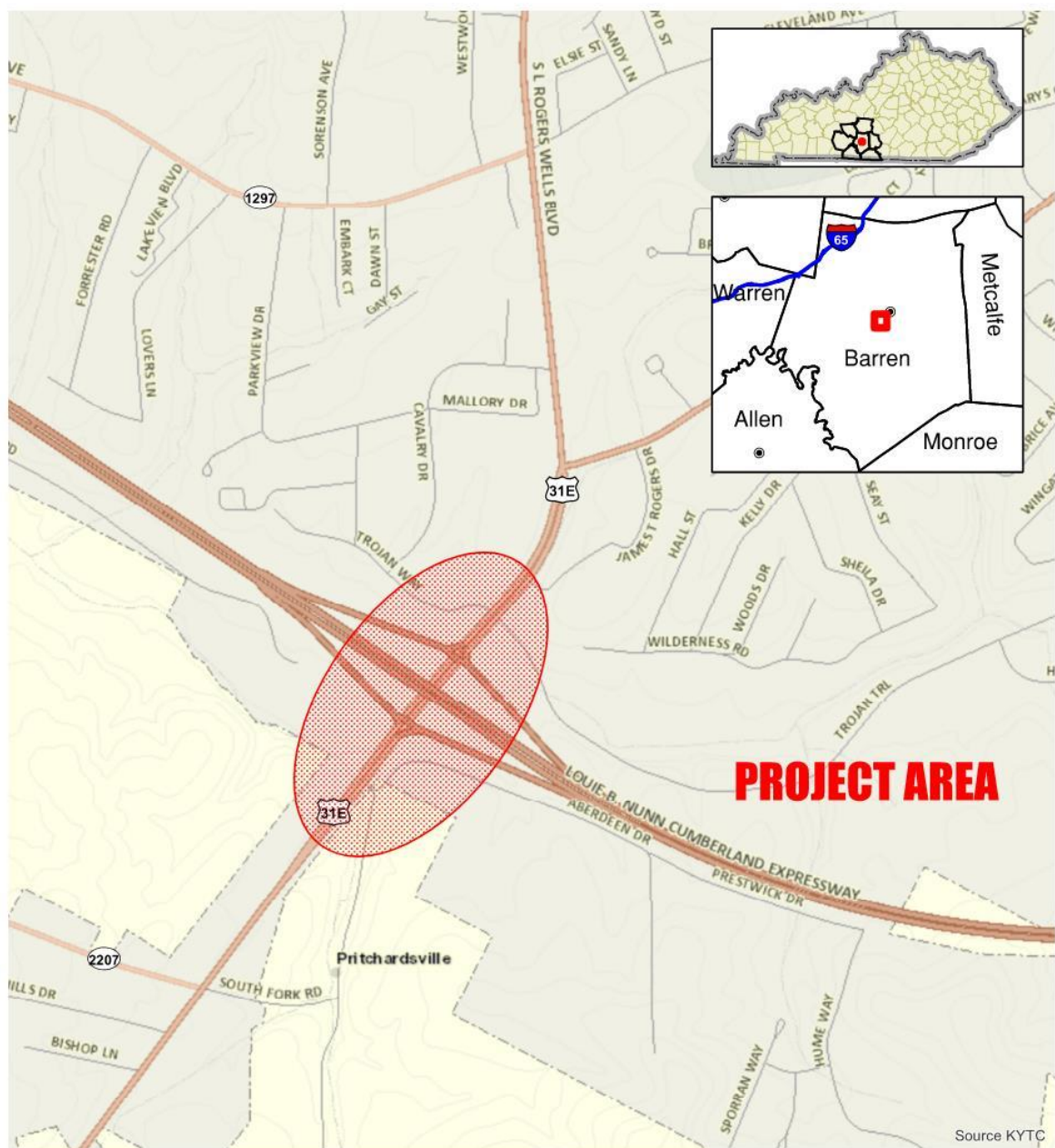
Consultants will be evaluated by the selection committee based on the following weighted factors:

1. Project approach and proposed procedures to accomplish the services for the project. (20 Points)
2. Relative experience of consultant personnel assigned to project team with highway project for KYTC and/or federal, local or other state governmental agencies. (15 Points)
3. Past record of performance on projects similar in type and complexity. (15 Points)
4. Capacity to comply with project schedule. (10 Points)
5. The Consultant demonstrates a comprehensive understanding of safety strategies and the ability to generate meaningful ideas that can measurably enhance the safety of the completed project. This includes both the immediate effectiveness and the long-term safety impacts of the finished facility. (5 Points)
6. Knowledge of the locality and familiarity of the general geographic area. (2 Points)

XIX. SELECTION COMMITTEE MEMBERS

1. Brett Duncan, P.E., User Division
2. Kenny Carrico, P.E., User Division
3. Casey Smith, P.E., Secretary's Pool
4. Zachary Neihof, P.E., Secretary's Pool
5. Brian Wood, P.E., Governor's Pool

XX. AREA MAP



**Barren County
Item No. 3-80300
US 31E Interchange**

Disclaimer: KYTC provides this map as a reference only. Users are to validate information independently.
Copyright: 2025 Kentucky Transportation Cabinet. All rights reserved.

Date: 4/22/2025 