

A REQUEST FOR PROPOSAL FOR PROFESSIONAL SERVICES CONTRACT

Department of Highways
Professional Services Procurement Bulletin 2025-11
Bell | 11-80300 | US-119

This document constitutes a Request for Proposals for a Professional Service Contract from qualified individuals and organizations to furnish those services as described herein for the Commonwealth of Kentucky, Department of Highways.

I. PROJECT DESCRIPTION

County -	Bell
Route -	US-119
Item No. -	11-80300.00
Project Description -	Improve safety and mobility by constructing a 2+1 road on US-119 in Bell County by adding a continuous third lane that serves as an alternate passing lane (MP 0.0 - 9.3).

II. PROJECT INFORMATION

Project Manager -	Keenan Jones, P.E.
User Division -	Planning
Approximate Fee -	\$150,000 Scoping Study (Lump Sum)
Project Funding -	Federal Statewide Planning & Research (SPR) Funds
Project Length -	Approximately 9.3 miles

III. PURPOSE AND NEED

The objective of this study is to identify options to improve the safety and mobility along US-119 between US-25E in Pineville and approximately 9.3 miles to the northeast. This portion of US-119 serves as a vital regional connection for communities south of the Pine Mountain Ridgeline, as well as access to ecotourism destinations. Designated as part of the National Truck Network (NTN), the Appalachian Development Highway System (ADHS) and a portion of US Bike Route 21, this corridor provides essential access for both freight movement and passenger travel to and from the area. With the goal of addressing mobility while considering safety enhancements, this study should identify opportunities and propose potential solutions to provide safe, efficient, and reliable transportation for the region.

IV. DBE GOAL

The Consultant team shall include a DBE Participation Plan with their Response to Announcement to help the Department meet the 11.95% DBE goal established by FHWA. The plan should demonstrate how DBE companies will be mentored or used to assist in the area(s)

pertaining to this contract. An additional page will be allowed in the Project Approach (Section 7) to exhibit this plan. A maximum of four (4) points will be considered in the Evaluation Factors for the DBE Participation Plan.

V. SCOPE OF WORK

Planning efforts would comprise of Needs Assessment Study preparation, engagement of the public, other stakeholders, and elected officials in the planning process and recommendation of a plan and budget implementation of projects to address identified needs. Expected tasks may include but are not limited to:

- Collect, summarize, and verify existing roadway data.
- Gather and analyze crash data utilizing methodologies outlined in the Highway Safety Manual (HSM), KTC research, and KYTC's Data Driven Safety Analysis (DDSA) Implementation Plan.
- Conduct local official/stakeholder and public involvement activities.
- Identify needs of the users of the corridor and develop potential improvement options utilizing [KYTC's Complete Streets, Roads, and Highways Manual](#) and [Policy](#).
- Develop a list of prioritized segments and projects.
- Develop planning-level cost estimates for all phases (Design, Right-of-Way, Utilities, and Construction) and conduct planning-level benefit-cost analysis of the identified projects and identify sources of risk.
- Conduct Stage 1 screening under the [KYTC Intersection Control Evaluation \(ICE\) Guidance](#) when examining potential intersection changes.
- Submit a summary of findings in a Final Report.

This project may be advanced to Preliminary Engineering upon completion of the Initial Planning Study with a Contract Modification. The project may then be advanced to Final Design upon the completion of Preliminary Engineering and Environmental Analysis with a Contract Modification. The selected Consultant will then be required to provide engineering services to perform Final Roadway and possibly Structural Design, including the preparation of any design studies, drainage design, right-of-way plans, construction plans, traffic control plans, and cost estimates as well as any other services that KYTC chooses not to perform with in-house forces.

VI. SPECIAL INSTRUCTIONS

The Department may retain any of the advertised services to be performed by in-house state forces.

Instructions for Response to Announcement can be found at:

<https://transportation.ky.gov/ProfessionalServices/Pages/Respond-to-an-Announcement.aspx>

VII. AVAILABLE STUDIES

[Corridor Study – Bell/Harlan | 11-8511 | US-119](#)

[Linking Kentucky: Statewide Corridor Plan \(SWCP\) Final Report \(2021\)](#)

VIII. METHOD OF DESIGN

The selected Consultant shall utilize the most recent CADD Standards for Highway Plans Policy in the development of the highway plans. Refer to the 2019 CADD Standards for ORD V4 Project Development Memo for information pertaining to the latest CADD Standards and plan submittal.

IX. ENVIRONMENTAL SERVICES

Any necessary Environmental Services are likely to be provided by the Consultant. If needed, an Environmental Overview Report with a red flag summary may be required in the final report. Environmental services necessary for completion of Preliminary Engineering or Final Design may be added by contract modification at the appropriate time. At any time, if the Department has the capacity to provide these services, the Department may retain the advertised environmental services. Prequalification in Environmental Services is not required to be identified in the Consultant's Response to Announcement.

X. PHOTOGRAMMETRIC SERVICES

The Consultant will provide mapping and will furnish manuscripts in ORD format. Statewide Elevation data and Aerial photography can be found at the following link [KyFromAbove - Kentucky's Aerial Photography & Elevation Data Program](#). The selected Consultant shall supplement this information with conventional surveying as determined during project scoping.

XI. STRUCTURE DESIGN

Structure Design is not anticipated for Planning Study. When the project advances to Preliminary and/or Final Design and if the selected Consultant is retained for Final Design services, the selected Consultant shall do the necessary engineering services to submit to KYTC an Advanced Situation Folder(s) for the appropriate structure(s). The selected Consultant may be responsible for any necessary Structure Design services. Structure Design of the proposed structure(s) may be added as a Contract Modification. Prequalification in Structure Design is not required to be identified in the Consultant's Response to Announcement.

XII. GEOTECHNICAL SERVICES

The selected Consultant may provide all Geotechnical Services required for the project. A future Preliminary Design contract may include preliminary geotechnical services to review available geological, mining, or other geotechnical information that could influence the selection of the preferred alternate. Geotechnical services necessary for the completion of Final Design may be added by contract modification at the appropriate time. At any time, if the Department has the capacity to provide these services, the Department may retain the advertised geotechnical services. Prequalification in Geotechnical Services is not required to be identified in the Consultant's Response to Announcement.

XIII. TRAFFIC ENGINEERING

The selected Consultant will provide the analysis of the existing and proposed operations. Traffic Signal Design services, if necessary for the completion of Final Design, may be added by Contract Modification at the appropriate time. At any time, if the Department has the capacity to provide these services, the Department may retain the advertised traffic services.

XIV. UTILITIES

The selected Consultant may be responsible for determining the existing locations of utilities to determine feasibility of redesign or utility relocation and cost estimates.

The selected Consultant will identify existing utility facilities within the project area and complete or contribute to a utility conflict matrix, documenting those that may be negatively impacted by the project. The Consultant shall document the following for each utility in the conflict matrix: type of utility, owner of utility, quantify the extent they may be impacted, potential impacts to project budget, potential impact to project schedule, confidence of utility location depicted, and recommendations for remedy.

XV. PREQUALIFICATION REQUIREMENTS

To respond to this project, the Consultant must be prequalified in the following areas by the response due date of this advertisement:

ROADWAY DESIGN

- Rural Roadway Design
- *Advanced Traffic Engineering Design & Modeling* (see note below)*
- *Surveying* (see note below)*
- *Urban Roadway Design* (see note below)*

TRAFFIC ENGINEERING

- Traffic Engineering
- *Electrical Engineering Traffic Signals* (see note below)*

TRANSPORTATION PLANNING

- Traffic Forecasting
- Traffic Data Collection
- Transportation Planning Engineering
- Conceptual Transportation Planning
- *Pedestrian & Bicycle Planning & Design* (see note below)*

Environmental & UST Services* (see note below)

- *UST & Hazmat Preliminary Site Assessment (Phase 1)**

Environmental Aquatic & Terrestrial Ecosystems Analysis* (see note below)

- *Botany**
- *Terrestrial Zoology**
- *Wetlands**
- *Freshwater Macroinvertebrates**
- *Water Quality**

Environmental Archaeology & Other Services* (see note below)

- Air Quality Analysis*
- Prehistoric Archaeology*
- Socio-Economic Analysis*
- Highway Noise Analysis*
- Historic Archaeology*
- Environmental Document Writing & Coordination*
- Cultural-Historic Analysis*
- Stream & Wetland Mitigation*

Geotechnical Services* (see note below)

- Geotechnical Engineering*

Structure Design* (see note below)

- Spans Under 500 Feet*

** Note – These prequalifications are not required with the initial proposal as it is uncertain to the extent practicable if they are necessary. Should these services become necessary during the delivery of the project in this or future phases, the selected Consultant team must obtain the required qualifications before providing those services or bring on a prequalified subconsultant at that time.*

XVI. PROCUREMENT SCHEDULE

Dates other than Response Date are tentative and provided for information only.

- | | |
|----------------------------|---|
| • Advertisement Date: | May 13, 2025 |
| • Response Date: | June 4, 2025 by 4:30 PM ET (Frankfort Time) |
| • First Selection Meeting: | June 9, 2025 |
| • Final Selection: | June 25, 2025 |
| • Pre-Design Conference: | July 2, 2025 |
| • Consultant Fee Proposal: | July 11, 2025 |
| • Contract Negotiations: | July 23, 2025 |
| • Notice to Proceed: | August 13, 2025 |

XVII. PROJECT SCHEDULE

- | | |
|--|---------------|
| • First Project Team Meeting: | November 2025 |
| • Second Project Team Meeting: | January 2026 |
| • Local Officials/Stakeholder Meeting: | March 2026 |
| • Final Project Team Meeting: | April 2026 |
| • Draft Report: | May 2026 |
| • Final Report: | July 2026 |

XVIII. EVALUATION FACTORS

Consultants will be evaluated by the selection committee based on the following weighted factors:

1. Project approach and proposed procedures to accomplish the services for the project. (20

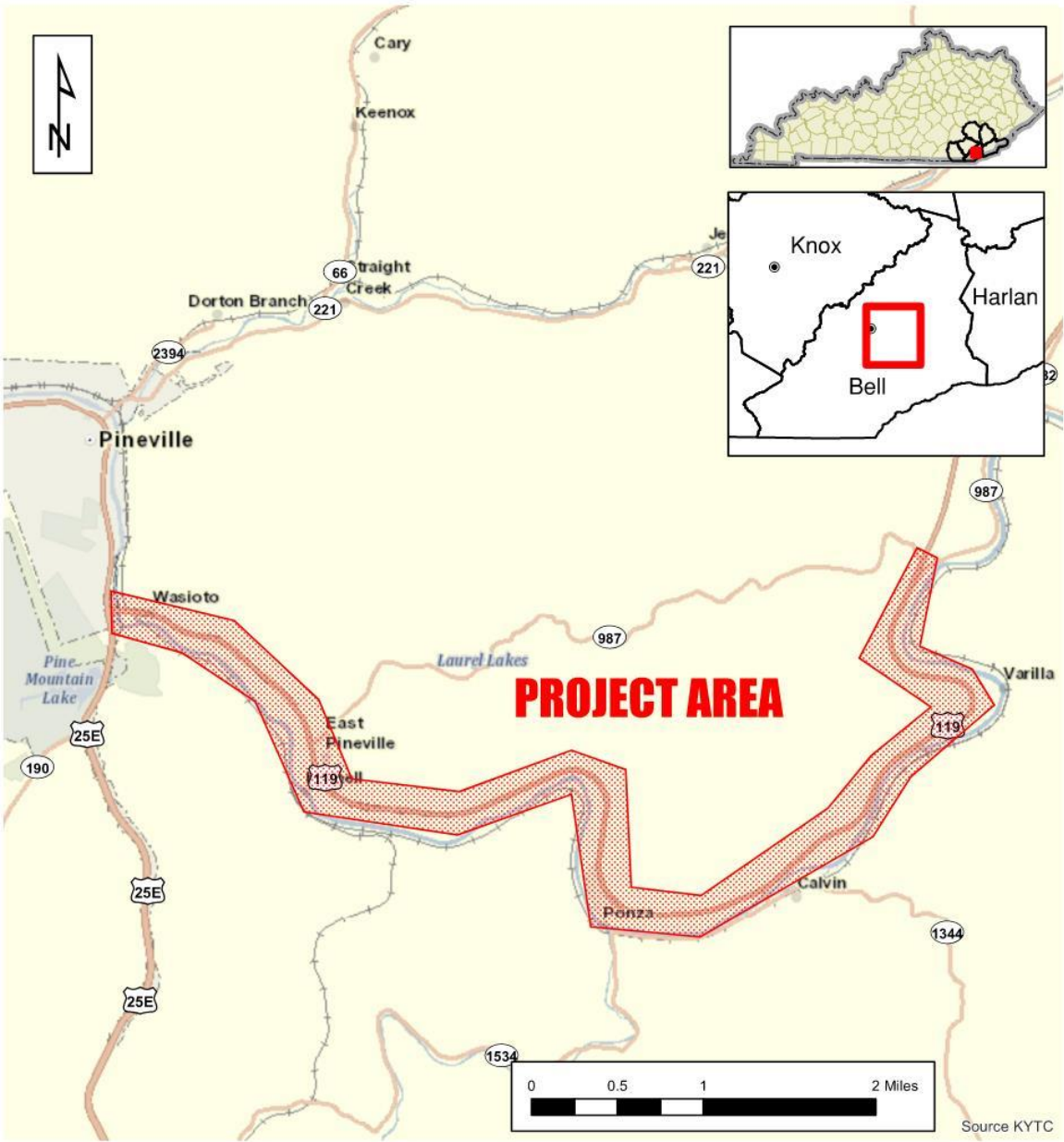
Points)

2. Relative experience of consultant personnel assigned to project team with highway project for KYTC and/or federal, local or other state governmental agencies. (15 Points)
3. Past record of performance on projects similar in type and complexity. (15 Points)
4. Capacity to comply with project schedule. (10 Points)
5. The Consultant demonstrates a comprehensive understanding of safety strategies and the ability to generate meaningful ideas that can measurably enhance the safety of the completed project. This includes both the immediate effectiveness and the long-term safety impacts of the finished facility. (5 Points)
6. DBE Participation Plan. (4 Points)
7. Knowledge of the locality and familiarity of the general geographic area. (2 Points)

XIX. SELECTION COMMITTEE MEMBERS

1. Keenan Jones, P.E., User Division
2. Catherine Davis, P.E., User Division
3. Emily Deason, P.E., Secretary's Pool
4. Zachary Neihof, P.E., Secretary's Pool
5. Cindy Evensen, Governor's Pool

XX. AREA MAP



PS Professional Services

TEAM KENTUCKY
TRANSPORTATION CABINET

Bell County
Item No. 11-80300
US 119

Disclaimer: KYTC provides this map as a reference only. Users are to validate information independently.
Copyright: 2025 Kentucky Transportation Cabinet. All rights reserved.

Date: 4/22/2025 