

A REQUEST FOR PROPOSAL FOR PROFESSIONAL SERVICES CONTRACT

Department of Highways
Professional Services Procurement Bulletin 2025-09
Johnson/Magoffin | 10-80101 | US-460

This document constitutes a Request for Proposals for a Professional Service Contract from qualified individuals and organizations to furnish those services as described herein for the Commonwealth of Kentucky, Department of Highways.

I. PROJECT DESCRIPTION

County - Johnson/Magoffin
Route - US-460
Item No. - 10-80101.00
Project Description - Improve US-460 from the intersection with KY-114 to the interchange with US-23

II. PROJECT INFORMATION

Project Manager - Darren Back, P.E.
User Division - Highway Design
Approximate Fee - \$1,200,000 Preliminary Engineering & Environmental Services (Lump Sum)
Project Funding - SPP Funds (State Funds)
Project Length - Approximately 13.456 miles

III. PURPOSE AND NEED

The purpose of the US-460 Improvement Project is to enhance regional mobility and to provide a safer, more efficient connection between Salyersville and Paintsville. US-460 provides the most direct connection between Paintsville and the Mountain Parkway at Salyersville for vehicles traveling west. Listed on the National Highway System (NHS) and the National Truck Network (NN), US-460 also provides connectivity to important regional resources such as Paintsville Lake State Park and Paintsville Appalachian Regional Healthcare (ARH) Hospital.

IV. DBE GOAL

The Consultant team may include a DBE Participation Plan with their Response to Announcement to help the Department meet the 11.95% DBE goal established by FHWA. The plan would demonstrate how DBE companies will be mentored or used to assist in the area(s) pertaining to this contract. If included, an additional page will be allowed in the Project Approach (Section 7) to exhibit this plan. No additional points will be provided in the Evaluation Factors for the DBE Participation Plan.

V. SCOPE OF WORK

The selected Consultant will be required to provide Preliminary Engineering and Environmental Services. Preliminary Engineering includes surveying, line and grade plans, traffic engineering analysis in accordance with Design Memo 03-11, conduct stage 1 screening and stage 2 analysis in accordance with the KYTC Intersection Control Evaluation (ICE) Guidance, preparation of engineering studies, identification of appropriate typical sections, identifying any utility impacts, performing preliminary drainage design, developing dependable cost estimates, and conducting and preparing documents for public meetings.

This project may be advanced to Final Design upon the completion of Preliminary Engineering with a Contract Modification. The selected Consultant will then be required to provide engineering services to perform Final Roadway and Structural Design, including the preparation of any design studies, drainage design, right-of-way plans, construction plans, traffic control plans, and cost estimates as well as any other services that KYTC chooses not to perform with in-house forces.

VI. SPECIAL INSTRUCTIONS

The Department may retain any of the advertised services to be performed by in-house state forces.

Instructions for Response to Announcement can be found at:

<https://transportation.ky.gov/ProfessionalServices/Pages/Respond-to-an-Announcement.aspx>

VII. AVAILABLE STUDIES

[Johnson/Magoffin County | Item No. 10-80101 | US-460 Corridor Study](#)

VIII. METHOD OF DESIGN

The selected Consultant shall utilize the most recent CADD Standards for Highway Plans Policy in the development of the highway plans. Refer to the 2019 CADD Standards for ORD V4 Project Development Memo for information pertaining to the latest CADD Standards and plan submittal.

IX. ENVIRONMENTAL SERVICES

Any necessary Environmental Services are expected to be provided by the Consultant. Based on preliminary discussion with the project team and all currently available environmental information for the proposed project location, we anticipate the required environmental document to be no higher than a CE 3. The final environmental document may be elevated (or reduced) to a different level of environmental documentation if environmental investigation leads to an alternative conclusion or changes in ROW occur. Prequalification of various Environmental Services are required to be identified in the Consultant's Response to Announcement.

X. PHOTOGRAMMETRIC SERVICES

The Consultant will provide mapping and will furnish manuscripts in ORD format. Statewide

Elevation data and Aerial photography can be found at the following link [KyFromAbove - Kentucky's Aerial Photography & Elevation Data Program](#). The selected Consultant shall supplement this information with conventional surveying as determined during project scoping.

XI. STRUCTURE DESIGN

Structure Design is not anticipated for Preliminary Design. When the project advances to Final Design and if the selected Consultant is retained for Final Design services, the selected Consultant shall do the necessary engineering services to submit to the KYTC an Advanced Situation Folder(s) for the appropriate structure(s). The selected Consultant may be responsible for any necessary Structure Design services. Structure Design of the proposed structure(s) may be added as a Contract Modification. Prequalification in the area of Structure Design is not required to be identified in the Consultant's Response to Announcement; however, the selected Consultant must obtain the required qualifications before providing these services, or bring a prequalified subconsultant at that time.

XII. GEOTECHNICAL SERVICES

The Department is expected to provide all Geotechnical Services but the selected Consultant may be asked to provide Geotechnical Services required for the projects. At any time, if the Department has the capacity to provide these services, the Department may retain the advertised geotechnical services. Prequalification in the area of Geotechnical Services is not required to be identified in the Consultant's Response to Announcement; however, the selected Consultant must obtain the required qualifications before providing these services, or bring a prequalified subconsultant at that time.

XIII. TRAFFIC ENGINEERING

The selected Consultant will provide the analysis of the existing and proposed operations. Traffic Signal Design and Lighting Design services, if necessary for the completion of Final Design, may be added by Contract Modification at the appropriate time. At any time, if the Department has the capacity to provide these services, the Department may retain the advertised traffic services.

XIV. UTILITIES

The selected Consultant shall acquire adequate information regarding existing utility features to identify existing utility facilities within the project area, document and confirm those that may be negatively impacted by the project. The selected Consultant shall bring attention any potential conflicts with existing utility facilities that may result in significant cost or time to relocate. The selected Consultant complete or contribute to a utility conflict matrix, documenting the existing utility facilities that may be impacted by the project. The Consultant shall document or confirm the following for each utility in the conflict matrix: type of utility, owner of utility, quantify the extent they may be impacted, potential impacts to project budget, potential impact to project schedule, confidence of utility location depicted, and recommendations for remedy.

XV. PREQUALIFICATION REQUIREMENTS

To respond to this project the Consultant must be prequalified in the following areas by the

response due date of this advertisement:

ENVIRONMENTAL AQUATIC & TERRESTRIAL ECOSYSTEMS ANALYSIS

- Fisheries
- Botany
- Terrestrial Zoology
- Wetlands
- Freshwater Macroinvertebrates
- Water Quality

ENVIRONMENTAL ARCHAEOLOGY & OTHER SERVICES

- Air Quality Analysis
- Prehistoric Archaeology
- Socio-Economic Analysis
- Highway Noise Analysis
- Historic Archaeology
- Environmental Document Writing & Coordination
- Cultural-Historic Analysis
- ~~Stream & Wetland Mitigation~~

ROADWAY DESIGN

- Rural Roadway Design
- Surveying
- Urban Roadway Design

Geotechnical Services* (see note below)

- *Geotechnical Engineering**
- *Geotechnical Drilling**
- *Geotechnical Laboratory Testing**

Right of Way* (see note below)

- *Relocation**
- *Acquisition**
- *Appraisal**
- *Appraisal Review**

Structure Design* (see note below)

- *Standard Structures**
- *Spans Under 500 Feet**

Traffic Engineering* (see note below)

- *Electrical Engineering Roadway Lighting**
- *Traffic Engineering**
- *Electrical Engineering Traffic Signals**

* Note – These prequalifications are not required with the initial proposal as it is uncertain to the extent practicable if they are necessary. Should these services become necessary during the delivery of the project in this or future phases, the selected Consultant team must obtain the required qualifications before providing those services or bring on a prequalified subconsultant at that time.

XVI. PROCUREMENT SCHEDULE

Dates other than Response Date are tentative and provided for information only.

- Advertisement Date: March 11, 2025
- Response Date: April 2, 2025 by 4:30 PM ET (Frankfort Time)
- First Selection Meeting: April 7, 2025
- Final Selection: April 23, 2025
- Pre-Design Conference: April 30, 2025
- Consultant Fee Proposal: May 9, 2025
- Contract Negotiations: May 21, 2025
- Notice to Proceed: June 11, 2025

XVII. PROJECT SCHEDULE

- Alignment Review Meeting December 15, 2025
- Preliminary Line & Grade April 15, 2026
- CE Level III Document June 15, 2026

XVIII. EVALUATION FACTORS

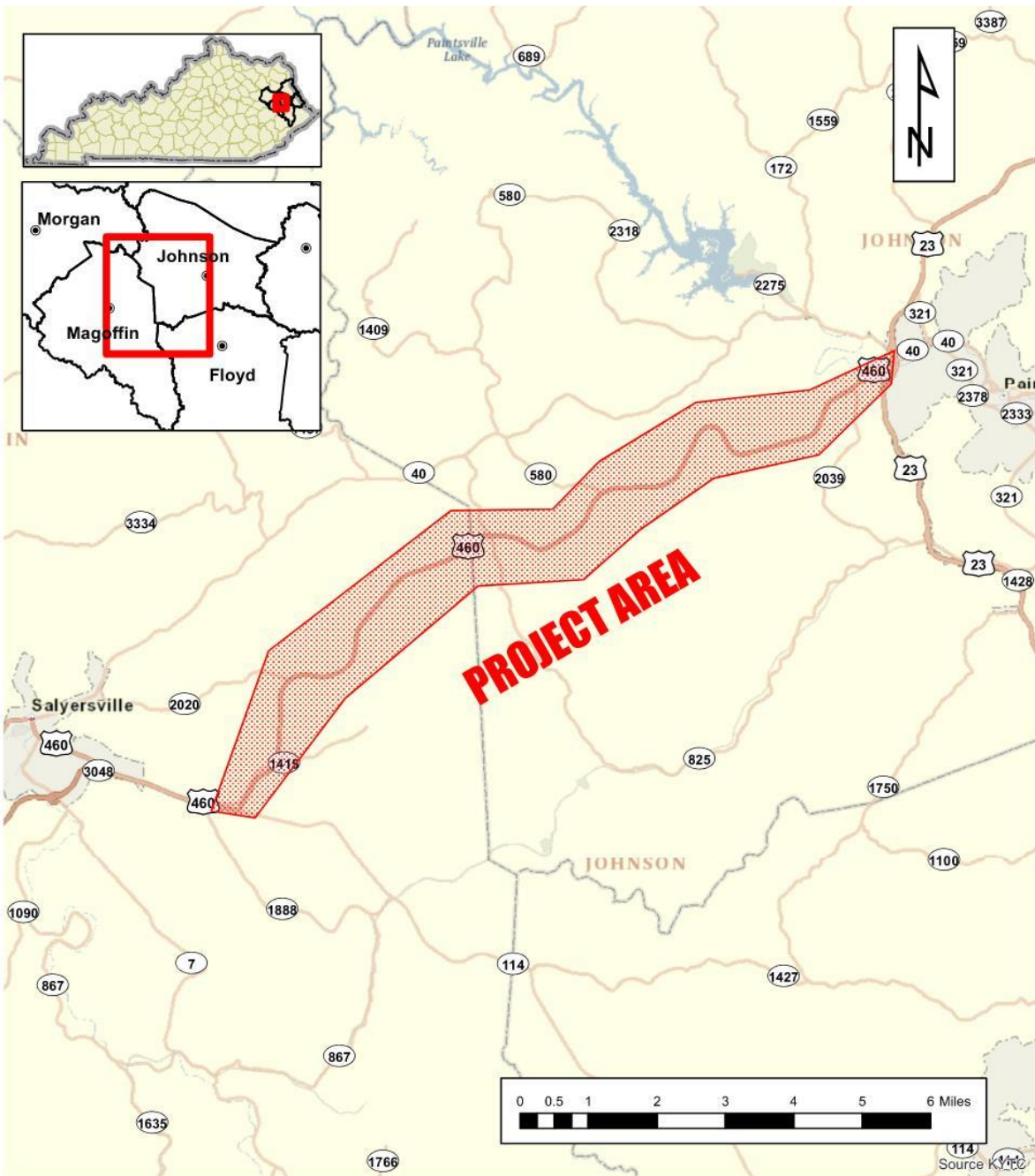
Consultants will be evaluated by the selection committee based on the following weighted factors:

1. Project approach and proposed procedures to accomplish the services for the project. (20 Points)
2. Relative experience of consultant personnel assigned to project team with highway project for KYTC and/or federal, local or other state governmental agencies. (15 Points)
3. Past record of performance on projects similar in type and complexity. (15 Points)
4. Capacity to comply with project schedule. (10 Points)
5. The Consultant demonstrates a comprehensive understanding of safety strategies and the ability to generate meaningful ideas that can measurably enhance the safety of the completed project. This includes both the immediate effectiveness and the long-term safety impacts of the finished facility. (5 Points)
6. Knowledge of the locality and familiarity of the general geographic area. (2 Points)

XIX. SELECTION COMMITTEE MEMBERS

1. Darren Back, P.E., User Division
2. Charlie Dale, P.E., User Division
3. Emily Deason, P.E., Secretary’s Pool
4. Matthew Sipes, P.E., Secretary’s Pool
5. Marcellyn Mathews, P.E., Governor’s Pool

XX. AREA MAP



PS Professional Services

TEAM KENTUCKY
TRANSPORTATION CABINET

**Magoffin County
Johnson County
Item No. 10-80101.00
US 460**

Disclaimer: KYTC provides this map as a reference only. Users are to validate information independently. Copyright: 2025 Kentucky Transportation Cabinet. All rights reserved.

Date: 2/14/2025 