

# A REQUEST FOR PROPOSAL FOR PROFESSIONAL SERVICES CONTRACT

Department of Highways  
Professional Services Procurement Bulletin 2025-07  
Warren | 3-20 | I-65 / US-68

This document constitutes a Request for Proposals for a Professional Service Contract from qualified individuals and organizations to furnish those services as described herein for the Commonwealth of Kentucky, Department of Highways.

## **I. PROJECT DESCRIPTION**

County - Warren  
Route - I-65/US-68  
Item No. - 3-20.00  
Project Description - Complete the I-65 / US-68 (Glasgow Road) diamond interchange by adding a northbound on-ramp and southbound off-ramp

## **II. PROJECT INFORMATION**

Project Manager - Stewart Lich, P.E.  
User Division - Highway Design  
Approximate Fee - \$300,000 Preliminary Engineering & Environmental Services (Lump Sum)  
Project Funding - NH Funds (State & Federal Funds)  
Project Length - Approximately 0.4 miles

## **III. PURPOSE AND NEED**

The existing interstate interchange at Oakland is a half-diamond that is lacking northbound on-ramps and southbound off-ramps. Development both on US-68 and near the nearest northbound on-ramps and southbound off-ramps create a need for better connectivity at this interchange.

The purpose of this project is to improve mobility and safety at Oakland. Adding two interstate ramps will complete the interstate interchange and improve northern connectivity for the local and surrounding community. It should also help reduce existing traffic currently forced to use alternate routes when traveling north. The ramp intersections at US-68 are expected to be improved to preserve mobility on US-68 and prepare for future development on the corridor.

## **IV. DBE GOAL**

The Consultant team shall include a DBE Participation Plan with their Response to Announcement to help the Department meet the 11.95% DBE goal established by FHWA. The plan should demonstrate how DBE companies will be mentored or used to assist in the area(s) pertaining to this contract. An additional page will be allowed in the Project Approach (Section 7)

to exhibit this plan. A maximum of four (4) points will be considered in the Evaluation Factors for the DBE Participation Plan.

## **V. SCOPE OF WORK**

The selected Consultant will be required to provide Preliminary Engineering and Environmental Services. Preliminary Engineering includes surveying, line and grade plans, traffic engineering analysis in accordance with Design Memo 03-11, conduct stage 1 screening and stage 2 analysis in accordance with the KYTC Intersection Control Evaluation (ICE) Guidance, preparation of engineering studies, identification of appropriate typical sections, identifying any utility impacts, performing preliminary drainage design, developing dependable cost estimates, and conducting and preparing documents for public meetings. It is anticipated that any required FHWA Interstate System Access analysis and documentation will be completed as part of the adjacent project 3-80214 and will not be part of the scope of work for this project.

This project may be advanced to Final Design upon the completion of Preliminary Engineering with a Contract Modification. The selected Consultant will then be required to provide engineering services to perform Final Roadway and Structural Design, including the preparation of any design studies, drainage design, right-of-way plans, construction plans, traffic control plans, roadway lighting plans and cost estimates as well as any other services that KYTC chooses not to perform with in-house forces.

## **VI. SPECIAL INSTRUCTIONS**

The Department may retain any of the advertised services to be performed by in-house state forces.

Instructions for Response to Announcement can be found at:

<https://transportation.ky.gov/ProfessionalServices/Pages/Respond-to-an-Announcement.aspx>

## **VII. AVAILABLE STUDIES**

[DNA Study - Warren | 3-20 | I-65 / US-60](#)

## **VIII. METHOD OF DESIGN**

The selected Consultant shall utilize the most recent CADD Standards for Highway Plans Policy in the development of the highway plans. Refer to the 2019 CADD Standards for ORD V4 Project Development Memo for information pertaining to the latest CADD Standards and plan submittal.

## **IX. ENVIRONMENTAL SERVICES**

Any necessary Environmental Services are expected to be provided by the Consultant. Based on preliminary discussion with the project team and all currently available environmental information for the proposed project location, we anticipate the required environmental document to be no higher than a Categorical Exclusion Level 1. The final environmental document may be elevated (or reduced) to a different level of environmental documentation if environmental investigation

leads to an alternative conclusion or changes in right of way occur. Prequalification of various Environmental Services are required to be identified in the Consultant's Response to Announcement.

#### **X. PHOTOGRAMMETRIC SERVICES**

The selected Consultant will be required to obtain all surveying and mapping necessary for the project. The Consultant will provide mapping and will furnish manuscripts in ORD format.

#### **XI. STRUCTURE DESIGN**

Structure Design is not anticipated for Preliminary Design. When the project advances to Final Design and if the selected Consultant is retained for Final Design services, the selected Consultant shall do the necessary engineering services to submit to the KYTC an Advanced Situation Folder(s) for the appropriate structure(s). The selected Consultant may be responsible for any necessary Structure Design services. Structure Design of the proposed structure(s) may be added as a Contract Modification. Prequalification in the area of Structure Design is not required to be identified in the Consultant's Response to Announcement. The selected Consultant must obtain the required qualifications before providing these services, or bring a prequalified subconsultant at that time.

#### **XII. GEOTECHNICAL SERVICES**

The Department is expected to provide all Geotechnical Services but the selected Consultant may be asked to provide Geotechnical Services required for the projects. At any time, if the Department has the capacity to provide these services, the Department may retain the advertised geotechnical services. Prequalification in the area of Geotechnical Services is not required to be identified in the Consultant's Response to Announcement; however, the selected Consultant must obtain the required qualifications before providing these services, or bring a prequalified subconsultant at that time.

#### **XIII. TRAFFIC ENGINEERING**

The Department will provide all traffic projections and related information.

The selected Consultant will provide the analysis of the existing and proposed operations. Traffic Signal Design and Lighting Design services, if necessary for the completion of Final Design, may be added by Contract Modification at the appropriate time. At any time, if the Department has the capacity to provide these services, the Department may retain the advertised traffic services.

#### **XIV. UTILITIES**

The selected Consultant shall acquire adequate information regarding existing utility features to identify existing utility facilities within the project area, document and confirm those that may be negatively impacted by the project. The selected Consultant shall bring attention any potential conflicts with existing utility facilities that may result in significant cost or time to relocate. The selected Consultant complete or contribute to a utility conflict matrix, documenting the existing utility facilities that may be impacted by the project. The Consultant shall document or confirm the

following for each utility in the conflict matrix: type of utility, owner of utility, quantify the extent they may be impacted, potential impacts to project budget, potential impact to project schedule, confidence of utility location depicted, and recommendations for remedy.

The Department will provide a preliminary utility contact list, will provide all utility cost estimates, as well as coordinate the utility plans and relocation. The selected Consultant shall be responsible for verifying utilities involved, requesting B.U.D. locates, performing a level B locate for all utilities within the project corridor, and including the location, size, and type of utilities on the plans. In addition to survey horizontal location of marked and visible utility features, the Consultant shall provide elevation of accessible manhole tie inverts and overhead low wire elevation.

The selected Consultant may be responsible for any necessary Subsurface Utility Engineering. Subsurface Utility Engineering may be added as a Contract Modification. Prequalification in the area of Subsurface Utility Engineering is not required to be identified in the Consultant's Response to Announcement. The selected Consultant must obtain the required qualifications before providing these services, or bring a prequalified subconsultant at that time.

## **XV. PREQUALIFICATION REQUIREMENTS**

To respond to this project the Consultant must be prequalified in the following areas by the response due date of this advertisement:

### ENVIRONMENTAL & UST SERVICES

- UST & Hazmat Preliminary Site Assessment (Phase 1)

### ENVIRONMENTAL AQUATIC & TERRESTRIAL ECOSYSTEMS ANALYSIS

- Fisheries
- Botany
- Terrestrial Zoology
- Wetlands
- Freshwater Macroinvertebrates
- Water Quality

### ENVIRONMENTAL ARCHAEOLOGY & OTHER SERVICES

- Air Quality Analysis
- Prehistoric Archaeology
- Socio-Economic Analysis
- Highway Noise Analysis
- Historic Archaeology
- Environmental Document Writing & Coordination
- Cultural-Historic Analysis
- Stream & Wetland Mitigation

### ROADWAY DESIGN

- Rural Roadway Design
- Surveying

### TRAFFIC ENGINEERING

- Traffic Engineering
- *Electrical Engineering Roadway Lighting\* (see note below)*

- *Electrical Engineering Traffic Signals\*(see note below)*

Geotechnical Services\* (see note below)

- *Geotechnical Engineering\**
- *Geotechnical Drilling\**
- *Geotechnical Laboratory Testing\**

Structure Design\* (see note below)

- *Standard Structures\**

*\* Note – These prequalifications are not required with the initial proposal as it is uncertain to the extent practicable if they are necessary. Should these services become necessary during the delivery of the project in this or future phases, the selected Consultant team must obtain the required qualifications before providing those services or bring on a prequalified subconsultant at that time.*

**XVI. PROCUREMENT SCHEDULE**

Dates other than Response Date are tentative and provided for information only.

- Advertisement Date: January 14, 2025
- Response Date: February 5, 2025 by 4:30 PM ET (Frankfort Time)
- First Selection Meeting: February 10, 2025
- Final Selection: February 26, 2025
- Pre-Design Conference: March 5, 2025
- Consultant Fee Proposal: March 14, 2025
- Contract Negotiations: March 26, 2025
- Notice to Proceed: April 16, 2025

**XVII. PROJECT SCHEDULE**

- Conceptual Alternatives Meeting June 1, 2025
- Public Meeting July 1, 2025
- Preliminary Line & Grade Inspection August 15, 2025
- Design Executive Summary September 1, 2025

It is the department’s intention to complete right of way plans by January 1, 2026. Meeting this aggressive schedule will be critical to reach this milestone.

**XVIII. EVALUATION FACTORS**

Consultants will be evaluated by the selection committee based on the following weighted factors:

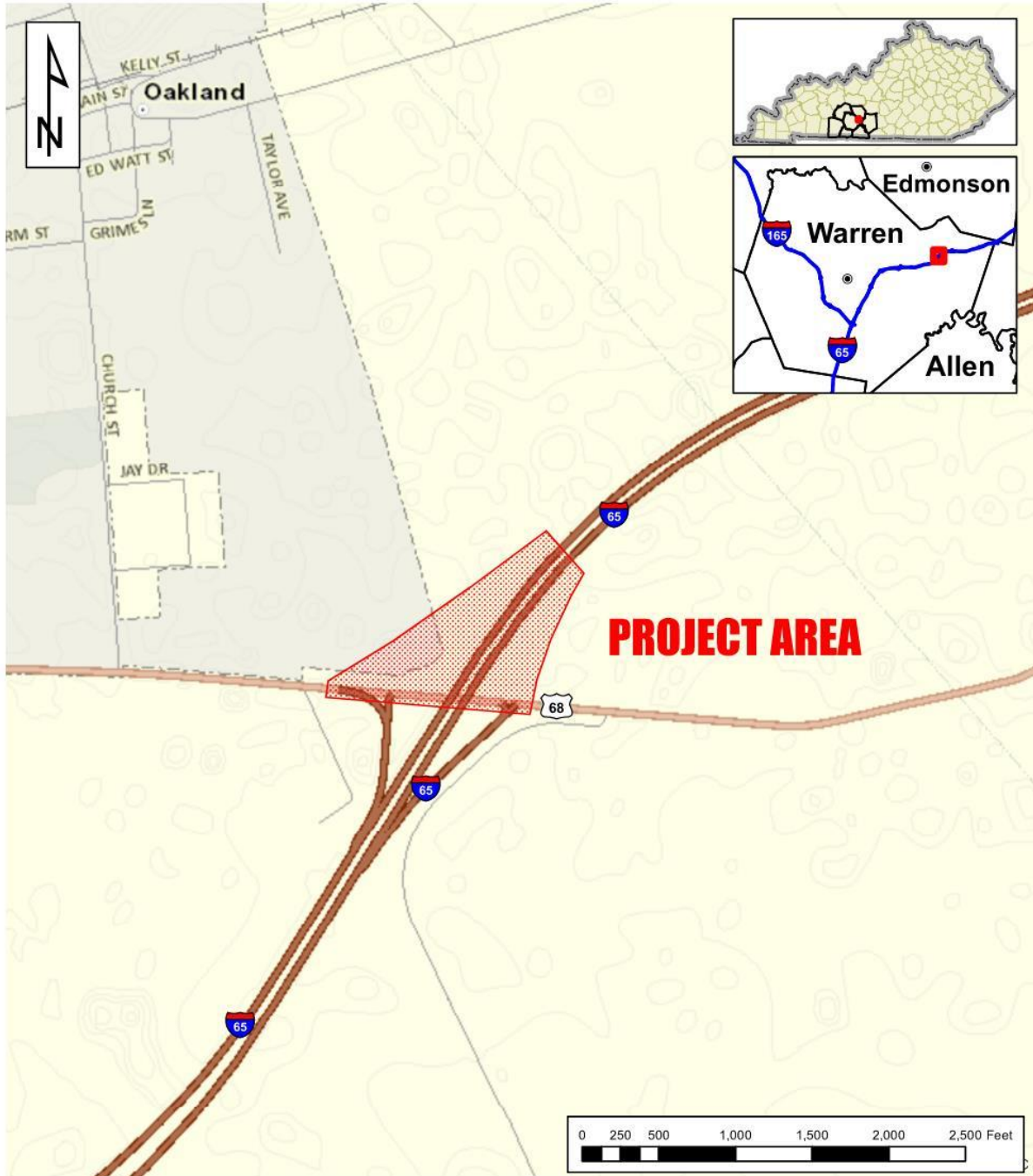
1. Project approach and proposed procedures to accomplish the services for the project. (20 Points)
2. Relative experience of consultant personnel assigned to project team with highway project for KYTC and/or federal, local or other state governmental agencies. (15 Points)

3. Past record of performance on projects similar in type and complexity. (15 Points)
4. Capacity to comply with project schedule. (15 Points)
5. The Consultant demonstrates a comprehensive understanding of safety strategies and the ability to generate meaningful ideas that can measurably enhance the safety of the completed project. This includes both the immediate effectiveness and the long-term safety impacts of the finished facility. (5 Points)
6. DBE Participation Plan (4 Points)
7. Knowledge of the locality and familiarity of the general geographic area. (2 Points)

**XIX. SELECTION COMMITTEE MEMBERS**

1. Stewart Lich, P.E., User Division
2. Kenny Carrico, P.E., User Division
3. Zachary Neihof, P.E., Secretary's Pool
4. Emily Deason, P.E., Secretary's Pool
5. Marcelyn Mathews, P.E., Governor's Pool

**XX. AREA MAP**



**Warren County  
Item No. 3-20.00  
I-65 / US 68**

Disclaimer: KYTC provides this map as a reference only. Users are to validate information independently. Copyright: 2024 Kentucky Transportation Cabinet. All rights reserved.

Date: 12/23/2024 