

A REQUEST FOR PROPOSAL FOR PROFESSIONAL SERVICES CONTRACT

Department of Highways
Professional Services Procurement Bulletin 2025-06
Jefferson | 5-80259 | US-31E

This document constitutes a Request for Proposals for a Professional Service Contract from qualified individuals and organizations to furnish those services as described herein for the Commonwealth of Kentucky, Department of Highways.

I. PROJECT DESCRIPTION

County - Jefferson
Route - US-31E
Item No. - 5-80259.00
Project Description - Right sizing and pedestrian access improvements on US-31E from MP 14.625 (Eastern Parkway) to MP 13.125 (Taylorsville Road)

II. PROJECT INFORMATION

Project Manager - Kyle Danhauer
User Division - Highway Design
Approximate Fee - \$175,000 Preliminary Engineering & Environmental Services (Lump Sum)
Project Funding - SPP Funds (State Funds)
Project Length - Approximately 1.50 miles

III. PURPOSE AND NEED

The purpose of this project is to increase the safety for vulnerable road users along US-31E (Bardstown Road) from KY-155 (Taylorsville Road) to US-60A (Eastern Parkway) in Jefferson County.

The Bardstown Road corridor is a multi-lane roadway which serves as a principal urban arterial for the commercial areas in the historic Highlands neighborhood of Louisville. US-31E provides a primary connection from downtown Louisville to the Watterson Expressway.

The corridor was described in *The Bardstown Road Safety Study (2018)* as having one of the highest concentrations of pedestrian strikes in Louisville. The limits of this project include the southern portion of Section 1 and all of Section 2 in that study. From 2019-2023 the corridor generated 240.25 Excess Expected Crashes (EEC) for the segment between Taylorsville Road and Bonnycastle Avenue, and 56.31 EEC for the segment between Bonnycastle Avenue and Eastern Parkway.

A goal of this project is to continue the safety improvements of the adjacent roadway reconfiguration project on US-31E from US 60A (Eastern Parkway) to US 150 (E Broadway) completed in 2022.

IV. DBE GOAL

The Consultant team may include a DBE Participation Plan with their Response to Announcement to help the Department meet the 11.95% DBE goal established by FHWA. The plan would demonstrate how DBE companies will be mentored or used to assist in the area(s) pertaining to this contract. If included, an additional page will be allowed in the Project Approach (Section 7) to exhibit this plan. No additional points will be provided in the Evaluation Factors for the DBE Participation Plan.

V. SCOPE OF WORK

This contract shall include all work required for the Preliminary Engineering phase of the project.

The selected Consultant will be required to provide Preliminary Roadway Design, including the preparation of engineering studies, identification of appropriate typical sections, perform a cultural historic baseline study, preparation of cultural historic report and survey forms, traffic analysis at intersections, developing dependable cost estimates, and conducting and preparing documents for public meetings.

This project may be advanced to Final Design upon the completion of Preliminary Engineering with a Contract Modification. The selected Consultant will then be required to provide engineering services to perform Final Roadway Design, including the preparation of any design studies, joint inspection plans, construction plans, signing & pavement marking plans, traffic control plans, final cost estimates, an anticipated construction schedule, as well as any other services that KYTC chooses not to perform with in-house forces.

VI. SPECIAL INSTRUCTIONS

The Department may retain any of the advertised services to be performed by in-house state forces.

Instructions for Response to Announcement can be found at:

<https://transportation.ky.gov/ProfessionalServices/Pages/Respond-to-an-Announcement.aspx>

VII. AVAILABLE STUDIES

[2018 Bardstown Road Safety Study](#)

[Roadway Plan Set – Jefferson | 5-9030 | US-31E](#)

[Traffic Plan Set – Jefferson | 5-9030 | US-31E](#)

VIII. METHOD OF DESIGN

The selected Consultant shall utilize the most recent CADD Standards for Highway Plans Policy in the development of the highway plans. Refer to the 2019 CADD Standards for ORD V4 Project Development Memo for information pertaining to the latest CADD Standards and plan submittal.

IX. ENVIRONMENTAL SERVICES

Only Cultural Historic Analysis will be completed by the Consultant. Communication and meeting with consulting parties may be required. The Department will provide remaining Environmental Services. Prequalification of Cultural-Historic Analysis is required to be identified in the Consultant's Response to Announcement.

Based on preliminary discussion with the project team and all currently available environmental information for the proposed project location, the Department anticipates the required environmental document to be no higher than a Categorical Exclusion Level 1. The final environmental document may be elevated (or reduced) to a different level of environmental documentation if environmental investigation leads to an alternative conclusion or changes in ROW occur.

X. PHOTOGRAMMETRIC SERVICES

The Consultant will provide mapping and will furnish manuscripts in ORD format. Statewide Elevation data and Aerial photography can be found at the following link [KyFromAbove - Kentucky's Aerial Photography & Elevation Data Program](#). This information will be supplemented with conventional surveying as determined during project scoping.

XI. STRUCTURE DESIGN

The Department is expected to provide any necessary Structure Design required for the project. The selected Consultant may be asked to do the necessary engineering services to submit to the KYTC an Advanced Situation Folder(s) for the appropriate structure(s). The selected Consultant may be responsible for any necessary Structure Design services. Prequalification in the area of Structure Design is not required to be identified in the Consultant's Response to Announcement.

XII. GEOTECHNICAL SERVICES

The Department is expected to provide all Geotechnical Services required for the project. At any time, the selected Consultant may be responsible for any necessary geotechnical services. Geotechnical services necessary for the completion of Final Design may be added by contract modification at the appropriate time. Prequalification in the area of Geotechnical Services is not required to be identified in the Consultant's Response to Announcement.

XIII. TRAFFIC ENGINEERING

The selected Consultant will provide the analysis of the existing and proposed traffic operations. Traffic Signal Design and Lighting Design services, if necessary for the completion of Final

Design, may be added by Contract Modification at the appropriate time. At any time, if the Department has the capacity to provide these services, the Department may retain the advertised traffic services.

XIV. UTILITIES

The selected Consultant shall provide a project location map to the Department.

The Department will submit a design information request ticket from KY811 after the project scoping meeting. The Department will send project location maps to all potential utility contacts to determine whether they may have existing utilities within these project limits. The Department will develop the utility contact list. Facility location maps received for this project will be provided to the selected Consultant.

All utilities including underground and overhead facilities within the project scope shall be field-verified by the Consultant. Sizes and types of underground and aerial utilities shall be identified on the plans.

The Consultant shall consider the practical feasibility of utility conflict avoidance, making the necessary adjustments to roadway design elements to minimize and, where possible, avoid conflicts with utility facilities. The selected Consultant shall bring attention any potential conflicts with existing utility facilities that may result in significant cost or time to relocate. The selected Consultant shall complete or produce a utility conflict matrix, documenting the existing utility facilities that may be impacted by the project. The Consultant shall document or confirm the following for each utility in the conflict matrix: type of utility, owner of utility, quantify the extent they may be impacted, potential impacts to project budget, potential impact to project schedule, confidence of utility location depicted, and recommendations for remedy. If additional utility investigation is necessary, the consultant is advised to seek Department consult.

XV. PREQUALIFICATION REQUIREMENTS

To respond to this project the Consultant must be prequalified in the following areas by the response due date of this advertisement:

ENVIRONMENTAL ARCHAEOLOGY & OTHER SERVICES

- Cultural-Historic Analysis

ROADWAY DESIGN

- Surveying
- Urban Roadway Design
- *Advanced Traffic Engineering Design & Modeling* (see note below)*

TRAFFIC ENGINEERING

- Traffic Engineering
- *Electrical Engineering Roadway Lighting* (see note below)*
- *Electrical Engineering Traffic Signals* (see note below)*

TRANSPORTATION PLANNING

- Pedestrian & Bicycle Planning & Design

Geotechnical Services* (see note below)

- Geotechnical Engineering*

Structure Design* (see note below)

- Spans Under 500 Feet*

Utility Design* (see note below)

- Subsurface Utility Engineering*
- Utility Preconstruction Coordination*

* Note – These prequalifications are not required with the initial proposal as it is uncertain to the extent practicable if they are necessary. Should these services become necessary during the delivery of the project in this or future phases, the selected Consultant team must obtain the required qualifications before providing those services or bring on a prequalified subconsultant at that time.

XVI. PROCUREMENT SCHEDULE

Dates other than Response Date are tentative and provided for information only.

- Advertisement Date: December 10, 2024
- Response Date: January 8, 2025 by 4:30 PM ET (Frankfort Time)
- First Selection Meeting: January 13, 2025
- Final Selection: January 29, 2025
- Pre-Design Conference: February 5, 2025
- Consultant Fee Proposal: February 14, 2025
- Contract Negotiations: February 26, 2025
- Notice to Proceed: March 19, 2025

XVII. PROJECT SCHEDULE

- Existing Conditions Meeting May 2025
- First Local Elected Officials/Stakeholders Public Meeting July 2025
- Preliminary Alternative Review Meeting September 2025
- Second Local Elected Officials/Stakeholders/Public Meeting October 2025
- Preliminary Line and Grade Meeting November 2025
- Submit Cultural-Historic Report December 2025
- Submit Design Executive Summary December 2025

XVIII. EVALUATION FACTORS

Consultants will be evaluated by the selection committee based on the following weighted factors:

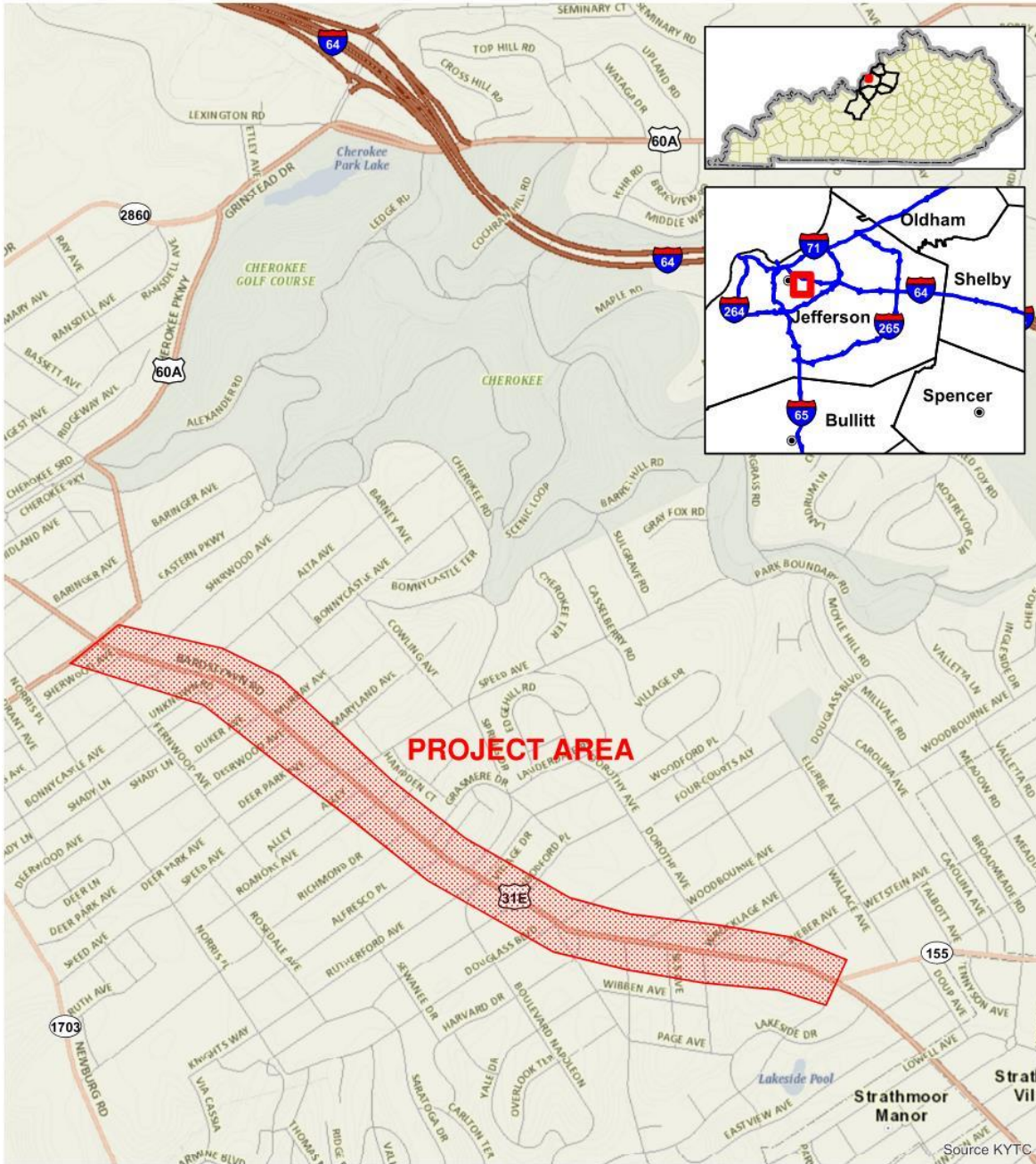
1. Project approach and proposed procedures to accomplish the services for the project. (20 Points)
2. Relative experience of consultant personnel assigned to project team with highway project for KYTC and/or federal, local or other state governmental agencies. (15 Points)

3. Past record of performance on projects similar in type and complexity. (15 Points)
4. Capacity to comply with project schedule. (10 Points)
5. Knowledge of the locality and familiarity of the general geographic area. (2 Points)

XIX. SELECTION COMMITTEE MEMBERS

1. Pat Matheny, P.E., User Division
2. Karl Sawyer, P.E., User Division
3. Emily Deason, P.E., Secretary's Pool
4. Crystal Mapel, P.E., Secretary's Pool
5. Marcelyn Mathews, P.E., Governor's Pool

XX. AREA MAP



PS Professional Services



**Jefferson County
Item No. 5-80259.00
US 31E**

Disclaimer: KYTC provides this map as a reference only. Users are to validate information independently.
Copyright: 2024 Kentucky Transportation Cabinet. All rights reserved.

Date: 11/26/2024