

A REQUEST FOR PROPOSAL FOR PROFESSIONAL SERVICES CONTRACT

Department of Highways
Professional Services Procurement Bulletin 2025-05
Trigg | 1-147 | KY-139
Trigg | 1-80318 | KY-276

This document constitutes a Request for Proposals for a Professional Service Contract from qualified individuals and organizations to furnish those services as described herein for the Commonwealth of Kentucky, Department of Highways.

I. PROJECT DESCRIPTION

County - Trigg
Route - KY-139 / KY-276
Item No. - 1-147.00 / 1-80318.00
Project Description - Correct geometric deficiencies and address safety, mobility, and access issues along KY-139 from the intersection of KY-124, north of Cadiz, to the I-24 interchange in Caldwell Co. (EMP 0.348)
Improve KY-276 from KY-139 (MP 0.00) to US-68 (MP 14.121) this narrow 2 lane road serves as a by-pass when I-24 is shutdown near Cadiz, KY. Corridor improvements, correct geometric deficiencies, address safety. (20224CCN)

II. PROJECT INFORMATION

Project Manager - Dustin Turner, P.E.
User Division - Planning
Approximate Fee - \$300,000 Planning Study (Lump Sum)
1-147 - \$225,000
1-80318 - \$75,000
Project Funding - SPP (State Funds)
Project Length - Approximately ~~6.715~~ 23.456 miles

III. PURPOSE AND NEED

The purpose of this project is to improve safety and address mobility and access concerns along KY-139, from the intersection of KY-124 north of Cadiz, to the I-24 Interchange in Caldwell County. KY-139 serves as the signed detour route for Interstate 24 in case of closure between Exit 56 and Exit 65. This route also serves as a vital connection to surrounding towns for the locals. As a vital route for both local and interstate traffic, enhancing safety, mobility, and access is essential to accommodate traffic volumes in the peak situations. While KY-139 is the signed detour route for I-24 traffic, additional consideration should be given to KY-276 at the milepoints listed above. This route is slightly shorter than the KY-139 route and is shown by various GPS

routing software as a viable detour during shutdowns. This study should identify issues and propose potential solutions to ensure safe, efficient, and reliable transportation for both local and interstate motorists.

IV. DBE GOAL

The Consultant team may include a DBE Participation Plan with their Response to Announcement to help the Department meet the 11.95% DBE goal established by FHWA. The plan would demonstrate how DBE companies will be mentored or used to assist in the area(s) pertaining to this contract. If included, an additional page will be allowed in the Project Approach (Section 7) to exhibit this plan. No additional points will be provided in the Evaluation Factors for the DBE Participation Plan.

V. SCOPE OF WORK

Planning efforts would comprise of Needs Assessment Study preparation, engagement of the public, other stakeholders, and elected officials in the planning process, and recommendation of a plan and budget implementation of projects to address identified needs. Expected tasks may include but are not limited to:

- Collect, summarize, and verify existing roadway data.
- Gather and analyze crash data utilizing methodologies outlined in the Highway Safety Manual, KTC research, and KYTC's Data Driven Safety Analysis Implementation Plan
- Conduct local official/stakeholder involvement activities.
- Identify needs of the users of the corridor and develop potential improvement options utilizing KYTC's Complete Streets, Roads, and Highways Manual and Policy.
- Analysis of adjoining, adjacent, or alternate detour routes in the event of incident on Interstate 24
- Develop list of prioritized segments and projects
- Develop planning-level cost estimates for all phases (Design, Right-of-Way, Utilities, Construction) and conduct planning-level benefit-cost analysis of the identified projects.
- Submit a summary of findings in a Final Report

This project may be advanced to Preliminary Engineering upon the completion of the initial Planning Study with a Contract Modification. The project may then be advanced to Final Design upon the completion of Preliminary Engineering with a Contract Modification. The selected Consultant will then be required to provide engineering services to perform Final Roadway and Structural Design, including the preparation of any design studies, drainage design, right-of-way plans, construction plans, traffic control plans, and cost estimates as well as any other services that KYTC chooses not to perform with in-house forces.

VI. SPECIAL INSTRUCTIONS

The Department may retain any of the advertised services to be performed by in-house state forces.

Instructions for Response to Announcement can be found at:
<https://transportation.ky.gov/ProfessionalServices/Pages/Respond-to-an-Announcement.aspx>

VII. METHOD OF DESIGN

The selected Consultant shall utilize the most recent CADD Standards for Highway Plans Policy in the development of the highway plans. Refer to the 2019 CADD Standards for ORD V4 Project Development Memo for information pertaining to the latest CADD Standards and plan submittal.

VIII. ENVIRONMENTAL SERVICES

Any necessary Environmental Services are likely to be provided by the consultant. If needed, an Environmental Overview Report with a red flag summary may be required in the final report. Environmental services necessary for the completion of Preliminary Engineering or Final Design may be added by contract modification at the appropriate time. At any time, if the Department has the capacity to provide the services, the Department may retain the advertised environmental services. Prequalification in the area of Environmental Services is not required to be identified in the Consultant's Response to Announcement.

IX. PHOTOGRAMMETRIC SERVICES

The Consultant will provide mapping and will furnish manuscripts in ORD format. Statewide Elevation data and Aerial photography can be found at the following link [KyFromAbove - Kentucky's Aerial Photography & Elevation Data Program](#). The selected Consultant shall supplement this information with conventional surveying as determined during project scoping.

X. STRUCTURE DESIGN

Structure Design is not anticipated for the planning study. If the Department chooses to advance the project (or portions thereof), the project advances to Final Design, and if the selected Consultant is retained for Final Design services, the selected Consultant shall do the necessary engineering services to submit to the KYTC an Advanced Situation Folder(s) for the appropriate structure(s). The selected Consultant may be responsible for any necessary Structure Design services. Structure Design of the proposed structure(s) may be added as a Contract Modification. Prequalification in the area of Structure Design is not required to be identified in the Consultant's Response to Announcement; however, the selected Consultant must obtain the required qualifications before providing these services, or bring a prequalified subconsultant at that time.

XI. GEOTECHNICAL SERVICES

The selected Consultant may provide all Geotechnical Services required for the project. The Preliminary Design contract may include preliminary geotechnical services to review available geological, mining, or other geotechnical information that could influence the selection of the preferred alternate. Geotechnical services necessary for the completion of Final Design may be added by contract modification at the appropriate time. At any time, if the Department has the capacity to provide these services, the Department may retain the advertised geotechnical services. Prequalification in the area of Geotechnical Services is not required to be identified in the Consultant's Response to Announcement; however, the selected Consultant must obtain the

required qualifications before providing these services, or bring a prequalified subconsultant at that time.

XII. TRAFFIC ENGINEERING

The selected Consultant will provide the analysis of the existing and proposed operations. Traffic Signal Design and Lighting Design services, if necessary for the completion of Final Design, may be added by Contract Modification at the appropriate time. At any time, if the Department has the capacity to provide these services, the Department may retain the advertised traffic services.

XIII. UTILITIES

The selected Consultant shall provide a project location map to the Department. The Department will send project location maps to all potential utility contacts to determine whether they may have existing utilities within these project limits. The Department will develop the utility contact list. Facility location maps received for this project will be provided to the selected Consultant.

The selected Consultant will identify existing utility facilities within the project area and complete or contribute to a utility conflict matrix, documenting those that may be negatively impacted by the project. The Consultant shall document the extent to which any existing significant utility facilities may be impacted by any proposed project and any significant adverse effects on the project budget or schedule.

XIV. PREQUALIFICATION REQUIREMENTS

To respond to this project the Consultant must be prequalified in the following areas by the response due date of this advertisement:

ROADWAY DESIGN

- Rural Roadway Design
- Advanced Traffic Engineering Design & Modeling
- Urban Roadway Design
- *Surveying* (see note below)*
- *Advanced Drainage Analysis & Design* (see note below)*
- *Photogrammetry & Related Services* (see note below)*

TRAFFIC ENGINEERING

- Traffic Engineering
- *Electrical Engineering Roadway Lighting* (see note below)*
- *Electrical Engineering Traffic Signals* (see note below)*

TRANSPORTATION PLANNING

- Traffic Data Collection
- ~~Road Centerline Data Collection~~
- *Traffic Forecasting* (see note below)*

Environmental Aquatic & Terrestrial Ecosystems Analysis (see note below)*

- *Wetlands**

Environmental Archeology & Other Services* (see note below)

- Air Quality Analysis*
- Socio-Economic Analysis*
- Highway Noise Analysis*
- Historic Archaeology*
- Cultural-Historic Analysis*

Geotechnical Services* (see note below)

- Geotechnical Engineering*
- Geotechnical Drilling*
- Geotechnical Laboratory Testing*

Structure Design* (see note below)

- Standard Structures*
- Spans Under 500 Feet*

* Note – These prequalifications are not required with the initial proposal as it is uncertain to the extent practicable if they are necessary. Should these services become necessary during the delivery of the project in this or future phases, the selected Consultant team must obtain the required qualifications before providing those services or bring on a prequalified subconsultant at that time.

XV. PROCUREMENT SCHEDULE

Dates other than Response Date are tentative and provided for information only.

- Advertisement Date: November 12, 2024
- Response Date: December 4, 2024 by 4:30 PM ET (Frankfort Time)
- First Selection Meeting: December 9, 2024
- Final Selection: December 20, 2024
- Pre-Design Conference: January 6, 2025
- Consultant Fee Proposal: January 13, 2025
- Contract Negotiations: January 27, 2025
- Notice to Proceed: February 17, 2025

XVI. PROJECT SCHEDULE

- Existing Conditions Meeting April 2025
- Initial Alternatives Review Meeting July 2025
- Local Officials/Stakeholders Meeting August 2025
- Draft Report Submittal October 2025
- Final Report Submittal November 2025

XVII. EVALUATION FACTORS

Consultants will be evaluated by the selection committee based on the following weighted factors:

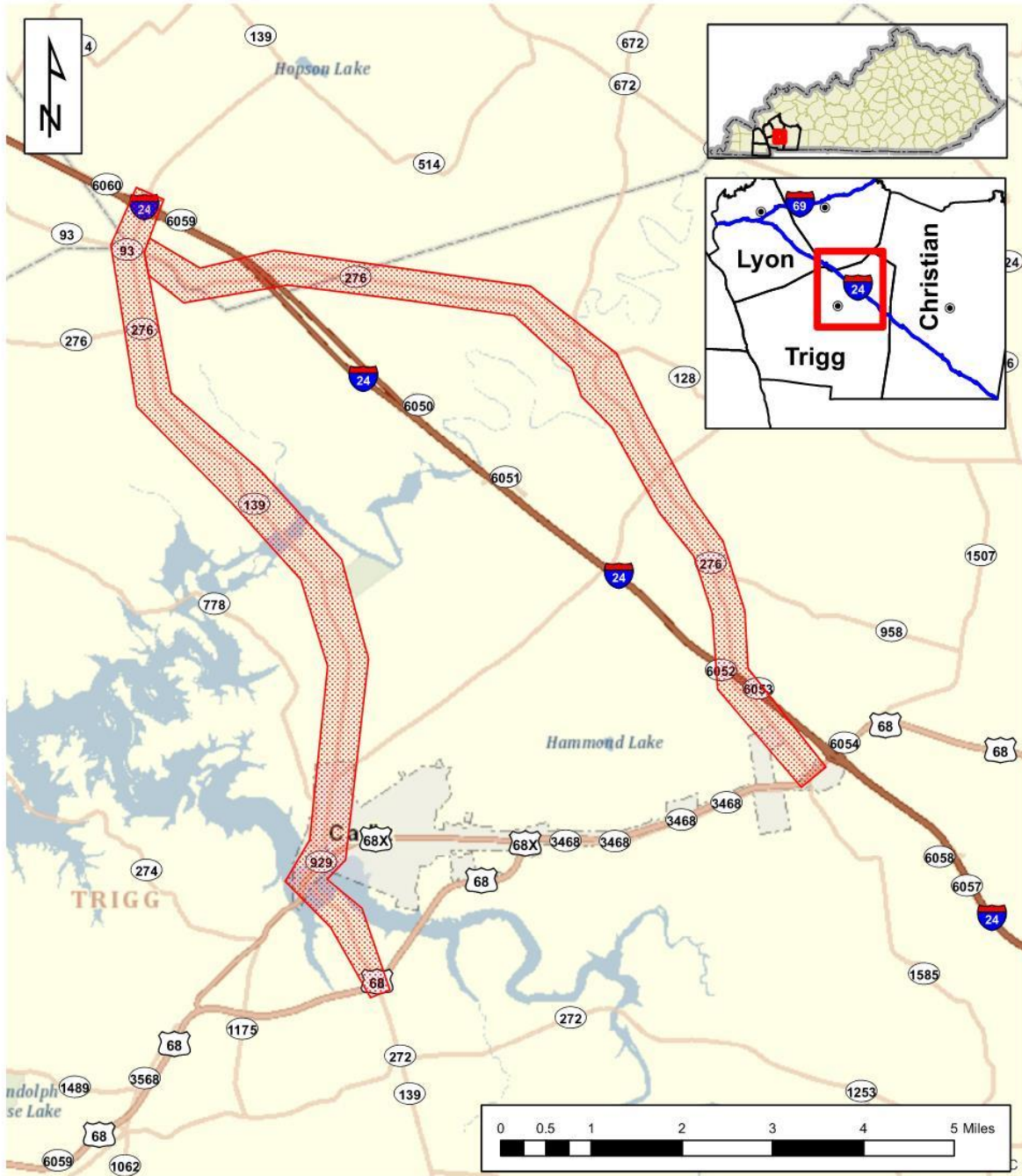
1. Project approach and proposed procedures to accomplish the services for the project. (20 Points)

2. Relative experience of consultant personnel assigned to project team with highway project for KYTC and/or federal, local or other state governmental agencies. (15 Points)
3. Past record of performance on projects similar in type and complexity. (15 Points)
4. Capacity to comply with project schedule. (10 Points)
5. Knowledge of the locality and familiarity of the general geographic area. (2 Points)

XVIII. SELECTION COMMITTEE MEMBERS

1. Dustin Turner, P.E., User Division
2. Catherine Davis, P.E., User Division
3. Emily Deason, P.E., Secretary's Pool
4. Crystal Mapel, P.E., Secretary's Pool
5. Marcelyn Mathews, P.E., Governor's Pool

XIX. AREA MAP



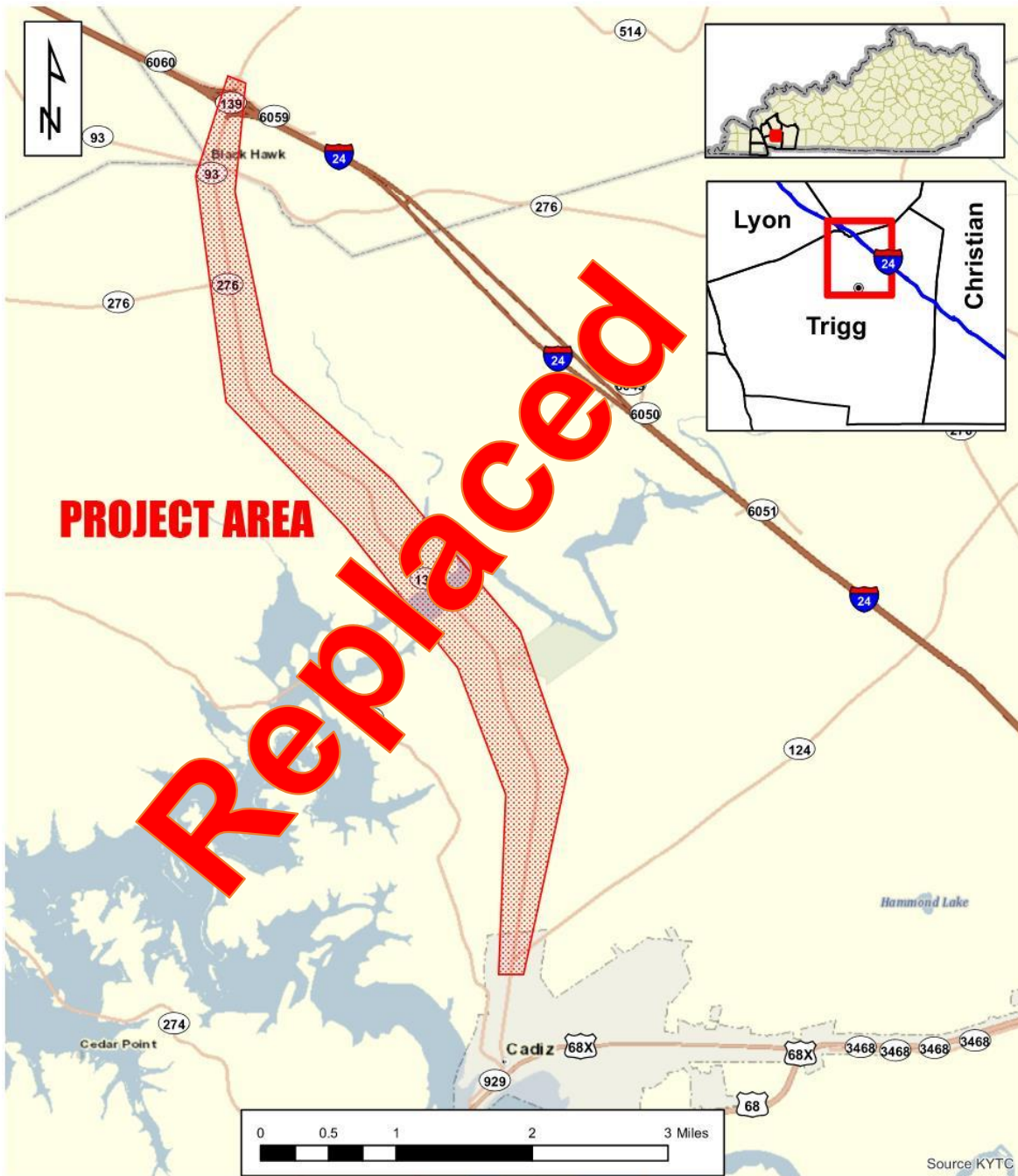
PS Professional Services

TEAM KENTUCKY
TRANSPORTATION CABINET

**Trigg County
Item No. 1-147.00
KY 139**

Disclaimer: KYTC provides this map as a reference only. Users are to validate information independently.
Copyright: 2024 Kentucky Transportation Cabinet. All rights reserved.

Date: 10/22/2024



**Trigg County
Item No. 1-147.00
KY 139**

Disclaimer: KYTC provides this map as a reference only. Users are to validate information independently. Copyright: 2024 Kentucky Transportation Cabinet. All rights reserved.

Date: 10/22/2024 