

A REQUEST FOR PROPOSAL FOR PROFESSIONAL SERVICES CONTRACT

Department of Highways
Professional Services Procurement Bulletin 2025-04
Russell | 8-156 | US-127

This document constitutes a Request for Proposals for a Professional Service Contract from qualified individuals and organizations to furnish those services as described herein for the Commonwealth of Kentucky, Department of Highways.

I. PROJECT DESCRIPTION

County - Russell
Route - US-127
Item No. - 8-156.00
Project Description - Reduce congestion and improve capacity, safety and mobility on US-127 between the west bypass of Jamestown to the Cumberland Expressway.

II. PROJECT INFORMATION

Project Manager - Jeffrey Dick, P.E.
User Division - Highway Design
Approximate Fee - \$750,000 Preliminary Engineering (Lump Sum)
Project Funding - NH (Federal Funds)
Project Length - Approximately 3.468 miles

III. PURPOSE AND NEED

The purpose and need of the project is to increase capacity along US-127 between the west bypass of Jamestown to the Cumberland Expressway. This section of US-127 is inadequate for the current and future traffic volumes, resulting in congestion, safety issues and reduced mobility. This corridor has experienced a high number of crashes at various intersections within the project limits, and an increase in commercial growth causing delays in commuter traffic, school busses, and commercial vehicles. A goal of the project is to increase safety and mobility for pedestrians and bicyclists along the corridor.

IV. DBE GOAL

The Consultant team shall include a DBE Participation Plan with their Response to Announcement to help the Department meet the 11.95% DBE goal established by FHWA. The plan should demonstrate how DBE companies will be mentored or used to assist in the area(s) pertaining to this contract. An additional page will be allowed in the Project Approach (Section 7) to exhibit this plan. A maximum of four (4) points will be considered in the Evaluation Factors for

the DBE Participation Plan.

V. SCOPE OF WORK

The selected Consultant will be required to provide Preliminary Engineering Services. Preliminary Engineering includes surveying, line and grade plans, traffic engineering analysis, preparation of engineering studies, identification of appropriate typical sections, identifying any utility impacts, performing preliminary drainage design, developing preliminary cost estimates, and conducting and preparing documents for public meetings which may include website development, videos, etc. Advanced traffic engineering design and modeling, and a speed study will be required on this project. A design executive summary will be required. The selected Consultant will be required to create an advanced traffic model for the proposed design alternatives. It is expected that Intersection Control Evaluation (ICE) be conducted at intersections within the project limits that meet the requirements outlined in the KYTC (ICE) policy.

This project may be advanced to Final Design upon the completion of Preliminary Engineering with a Contract Modification. The selected Consultant will then be required to provide engineering services to perform Final Roadway Design, including the preparation of any design studies, drainage design, right-of-way plans, construction plans, traffic control plans, signal plans, signing plans, lighting plans, pavement marking plans, and cost estimates as well as any other services that KYTC chooses not to perform with in-house forces.

VI. SPECIAL INSTRUCTIONS

The Department may retain any of the advertised services to be performed by in-house state forces.

Instructions for Response to Announcement can be found at:

<https://transportation.ky.gov/ProfessionalServices/Pages/Respond-to-an-Announcement.aspx>

VII. AVAILABLE STUDIES

[Russell Springs Improvement Study – US-127](#)

VIII. METHOD OF DESIGN

The selected Consultant shall utilize the most recent CADD Standards for Highway Plans Policy in the development of the highway plans. Refer to the 2019 CADD Standards for ORD V4 Project Development Memo for information pertaining to the latest CADD Standards and plan submittal.

IX. ENVIRONMENTAL SERVICES

All environmental work will be completed by the Department. However, the Department may ask the consultant for specific design information in order to complete environmental tasks. If the Department does not have the capacity to provide environmental services, necessary Environmental Services may be added by Contract Modification at the appropriate time. Prequalification of various Environmental Services are not required to be identified in the Consultant's Response to Announcement.

X. PHOTOGRAMMETRIC SERVICES

The Consultant will provide mapping and will furnish manuscripts in ORD format. Statewide Elevation data and Aerial photography can be found at the following link [KyFromAbove - Kentucky's Aerial Photography & Elevation Data Program](#). The selected Consultant shall supplement this information with conventional surveying as determined during project scoping.

XI. STRUCTURE DESIGN

The Department is expected to provide any necessary Structure Design required for the project. The Consultant may be asked to provide the Department with Advanced Situation Folder if required. Structure Design of the proposed structure(s) may be added as a Contract Modification and the Consultant may be responsible for any necessary Structure Design services. Prequalification in the area of Structure Design is not required to be identified in the Consultant's Response to Announcement.

XII. GEOTECHNICAL SERVICES

The Department is expected to provide all Geotechnical Services required for the project. The Consultant may be asked to provide the Department with specific design information so that Geotechnical work can be completed. If the Department does not have the capacity to provide geotechnical services, necessary Geotechnical Services may be added by Contract Modification at the appropriate time. Prequalification in the area of Geotechnical Services is not required to be identified in the Consultant's Response to Announcement.

XIII. TRAFFIC ENGINEERING

The selected Consultant will provide the analysis of the existing and proposed operations. Traffic Signal Design, signing design and pavement marking design, and Lighting Design services, if necessary for the completion of Final Design, may be added by Contract Modification at the appropriate time. Lighting design will need to incorporate/consider existing high mast lighting at the Cumberland Expressway interchange as well as existing city and utility company-maintained street lighting. At any time, if the Department has the capacity to provide these services, the Department may retain the advertised traffic services.

XIV. UTILITIES

The Department is responsible for providing available information on existing utility facility locations to support the determination of conflicts of the project design with the existing utility facilities. The Department shall cooperatively support the identification of these conflicts. The Consultant shall consider the practical feasibility of utility conflict avoidance, making the necessary adjustments when directed by the Department. Those conflicts determined as unavoidable shall be addressed by the entity charged with utility coordination, be it the Department or Consultant.

The selected Consultant shall provide a project location map to the Department. The Department will send project location maps to all potential utility contacts to determine whether they may have existing utilities within these project limits. The Department will develop the utility contact list. Facility location maps received for this project will be provided to the selected Consultant.

All utilities including underground and overhead facilities within the project scope shall be field-verified by the Consultant. Sizes and types of underground and aerial utilities shall be identified on the plans for each alignment alternative in the PL&G submittal. In addition to survey horizontal location of visible utility features, the Consultant shall provide elevation of accessible manhole tie inverts and overhead low wire elevation.

The selected Consultant may be required to provide utility related services for this project, which may include utility coordination, construction inspection, or specific facility type utility design. These services have specific prequalification standards, required of the selected consultant or subconsultant.

The selected Consultant shall acquire adequate information regarding existing utility features to identify existing utility facilities within the project area, document and confirm those that may be negatively impacted by the project. The consultant also needs to document lighting pole locations as well as pole height/type, lighting fixture type along US 127 and any impacted poles along approach streets. The selected Consultant shall bring attention any potential conflicts with existing utility facilities that may result in significant cost or time to relocate. The selected Consultant complete or contribute to a utility conflict matrix, documenting the existing utility facilities that may be impacted by the project. The Consultant shall document or confirm the following for each utility in the conflict matrix: type of utility, owner of utility, quantify the extent they may be impacted, potential impacts to project budget, potential impact to project schedule, confidence of utility location depicted, and recommendations for remedy.

XV. PREQUALIFICATION REQUIREMENTS

To respond to this project the Consultant must be prequalified in the following areas by the response due date of this advertisement:

ROADWAY DESIGN

- Rural Roadway Design
- Advanced Traffic Engineering Design & Modeling
- Surveying
- Urban Roadway Design

TRAFFIC ENGINEERING

- Traffic Engineering
- *Electrical Engineering Roadway Lighting* (see note below)*
- *Electrical Engineering Traffic Signals* (see note below)*

TRANSPORTATION PLANNING

- Traffic Forecasting
- Traffic Data Collection
- Pedestrian & Bicycle Planning & Design
- Travel Demand & Simulation Modeling

UTILITY DESIGN

- Utility Preconstruction Coordination

Environmental & UST Services* (see note below)

- *UST & Hazmat Preliminary Site Assessment (Phase 1)**
- *UST Corrective Action**

- *Hazmat Corrective Action**
- *UST Site Investigation (Phase 2)**
- *UST Closure Assessment**
- *Hazmat Site Investigation (Phase 2)**

*Environmental Aquatic & Terrestrial Ecosystems Analysis** (see note below)

- *Fisheries**
- *Botany**
- *Terrestrial Zoology**
- *Wetlands**
- *Freshwater Macroinvertebrates**
- *Water Quality**

*Environmental Archaeology & Other Services** (see note below)

- *Air Quality Analysis**
- *Prehistoric Archaeology**
- *Socio-Economic Analysis**
- *Highway Noise Analysis**
- *Historic Archaeology**
- *Environmental Document Writing & Coordination**
- *Cultural-Historic Analysis**
- *Stream & Wetland Mitigation**

*Geotechnical Services** (see note below)

- *Geotechnical Engineering**
- *Geotechnical Drilling**
- *Geotechnical Laboratory Testing**

*Structure Design** (see note below)

- *Standard Structures**
- *Spans Under 500 Feet**

** Note – These prequalifications are not required with the initial proposal as it is uncertain to the extent practicable if they are necessary. Should these services become necessary during the delivery of the project in this or future phases, the selected Consultant team must obtain the required qualifications before providing those services or bring on a prequalified subconsultant at that time.*

XVI. PROCUREMENT SCHEDULE

Dates other than Response Date are tentative and provided for information only.

- Advertisement Date: October 8, 2024
- Response Date: October 30, 2024 by 4:30 PM ET (Frankfort Time)
- First Selection Meeting: November 4, 2024
- Final Selection: November 20, 2024
- Pre-Design Conference: November 25, 2024
- Consultant Fee Proposal: December 6, 2024
- Contract Negotiations: December 18, 2024
- Notice to Proceed: January 8, 2025

XVII. PROJECT SCHEDULE

- Alternatives Review Meeting July 15, 2025
- Preliminary Line & Grade October 15, 2025

XVIII. EVALUATION FACTORS

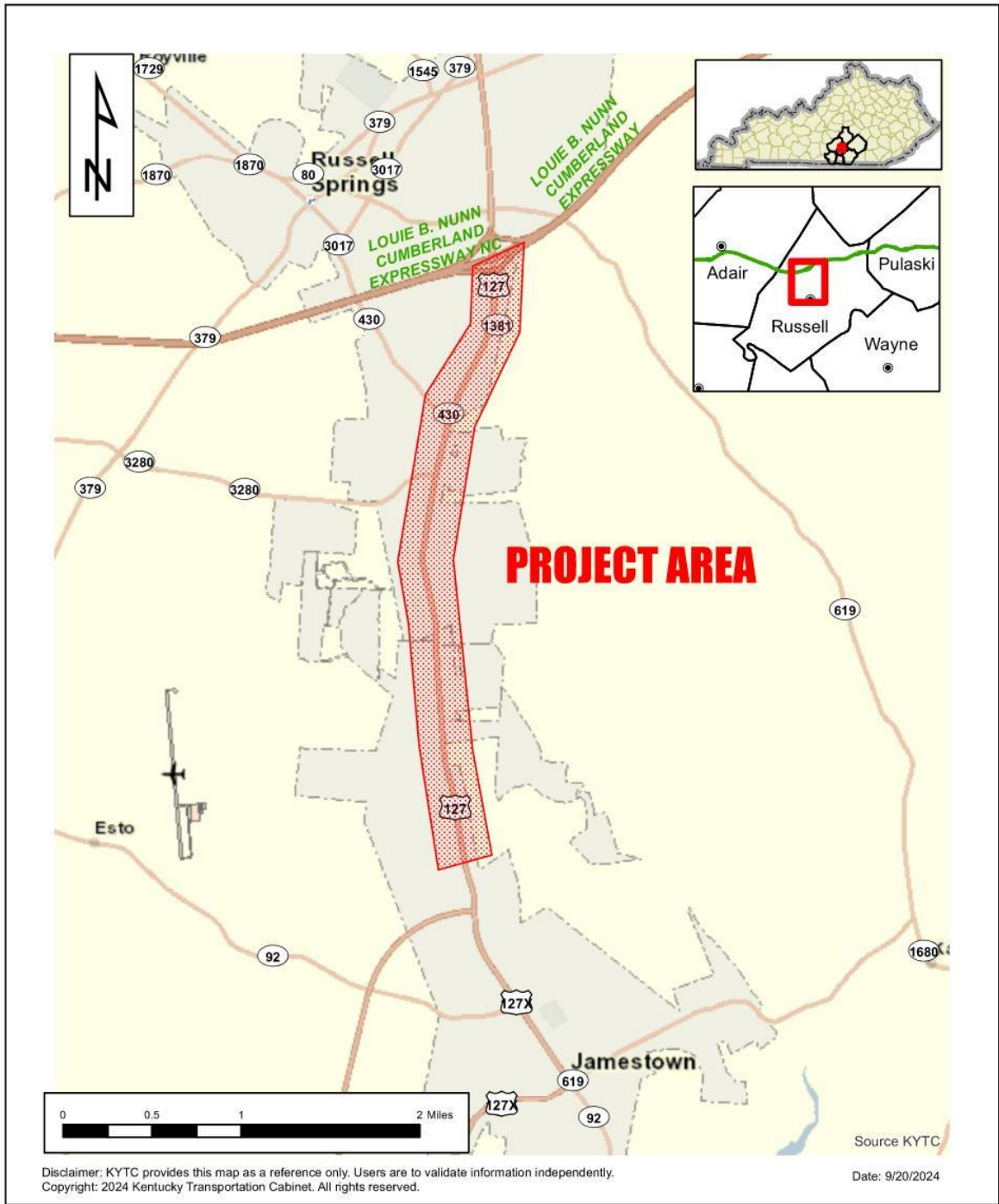
Consultants will be evaluated by the selection committee based on the following weighted factors:

1. Project approach and proposed procedures to accomplish the services for the project. (20 Points)
2. Relative experience of consultant personnel assigned to project team with highway project for KYTC and/or federal, local or other state governmental agencies. (15 Points)
3. Past record of performance on projects similar in type and complexity. (15 Points)
4. Capacity to comply with project schedule. (10 Points)
5. DBE Participation Plan. (4 Points)
6. Knowledge of the locality and familiarity of the general geographic area. (2 Points)

XIX. SELECTION COMMITTEE MEMBERS

1. Jeffrey Dick, P.E., User Division
2. Randy Turner, P.E., User Division
3. Crystal Mapel, P.E., Secretary's Pool
4. Matthew Sipes, P.E., Secretary's Pool
5. Brian Wood, P.E., Governor's Pool

XX. AREA MAP



PS Professional Services



**Russell County
Item No. 8-156.00
US 127**