

A REQUEST FOR PROPOSAL FOR PROFESSIONAL SERVICES CONTRACT

Department of Highways
Professional Services Procurement Bulletin 2024-03
Jefferson | 5-587 | I-64

This document constitutes a Request for Proposals for a Professional Service Contract from qualified individuals and organizations to furnish those services as described herein for the Commonwealth of Kentucky, Department of Highways.

I. PROJECT DESCRIPTION

County - Jefferson
Route - I-64
Item No. - 5-587.00
Project Description - Reconnecting West Louisville to the Ohio Riverfront throughout the Riverside Expressway (I-64) corridor. Planning study to facilitate public involvement, identify constructible improvements, provide cost estimates, identify match funding and partners, and assist in the preparation of funding/grant applications.

II. PROJECT INFORMATION

Project Manager - Larry Chaney, P.E.
User Division - Planning
Approximate Fee - \$750,000 Scoping Study (Lump Sum)
Project Funding - Federal Funds (STBG-MPO)
Project Length - Approximately 2.92 miles

III. PURPOSE AND NEED

I-64 is a high-speed, fully-controlled access interstate transportation facility passing through an economically disadvantaged area and constituting a barrier to community connectivity as it affects access to jobs and recreational opportunities. The study would explore options to ameliorate the impacts of that barrier, particularly as they affect Portland and adjacent West Louisville neighborhoods. Opportunities exist for neighborhood, business community, city, and state partnerships in the implementation of this project. The Louisville Metro Portland Neighborhood Plan brought together many of these stakeholders, and the project could certainly build on that foundation. Since the adoption of the plan, the West End Opportunity Partnership was established, creating a TIFF District with the aim of revitalizing the community.

The project would consist of a planning study to examine the needs and possible solutions regarding provision of more robust and more attractive community connections between the Portland neighborhood and the areas adjacent to the Ohio River that are safe and accessible for

all potential users. The project limits are generally from 42nd Street to 13th Street and from Bank Street to the Ohio River. Outcomes of the study might be: recommendations for infrastructure improvements (particularly those enhancing access); development of maintenance plans; fostering of neighborhood and public partnerships; creation of a “sense of place”; and other elements contributing to the restoration of the interconnection between West Louisville and the Ohio River. Ideally, plans and programs developed in this study could not only be applied in other locations across the City of Louisville but perhaps could be useful in other areas as well.

IV. DBE GOAL

The Consultant team shall include a DBE Participation Plan with their Response to Announcement to help the Department meet the 11.95% DBE goal established by FHWA. The plan should demonstrate how DBE companies will be mentored or used to assist in the area(s) pertaining to this contract. An additional page will be allowed in the Project Approach (Section 7) to exhibit this plan. A maximum of four (4) points will be considered in the Evaluation Factors for the DBE Participation Plan.

V. SCOPE OF WORK

Planning effort would prepare a Needs Assessment Study, consider incorporation of reasonable findings from previous studies and neighborhood plans, and then recommend a plan and budget for implementation to address those needs. Tasks are expected to include:

- Clarify study area
- Establish Purpose/Need and Goals
- Identify and document existing conditions
- Prepare an Environmental Overview corridor assessment
- Develop travel modeling assumptions & projections (including bicycles, pedestrians and transit)
- Engage local officials, stakeholders, and area residents
- Consider incorporating planning recommendations previously suggested for the corridor
- Develop a prioritized list of short, medium, and long-range improvement concepts
- Identify needs of the users of the corridor and develop potential improvement options utilizing KYTC’s Complete Streets, Roads, and Highways Manual and Policy.
- Prepare cost estimates for future Design, ROW, Utility and Construction phase work

This project may be advanced to Preliminary Engineering upon the completion of the Planning Phase by Contract Modification. The selected Consultant will then be required to provide engineering services to perform NEPA clearance.

The project may then be advanced to Final Design upon the completion of Preliminary Engineering and Environmental Services with a subsequent Contract Modification. The selected Consultant will then be required to provide engineering services to perform NEPA clearance, Final Roadway and Structural Design (including the preparation of any design studies, drainage design, right-of-way plans, construction plans, traffic control plans, and cost estimates), and any other services that KYTC chooses not to perform with in-house forces.

VI. SPECIAL INSTRUCTIONS

The Department may retain any of the advertised services to be performed by in-house state forces.

Instructions for Response to Announcement can be found at:

<https://transportation.ky.gov/ProfessionalServices/Pages/Respond-to-an-Announcement.aspx>

The Department will allow for the following modifications to the standard response format for responses to this advertisement only:

- Section 3: Project Team Organizational Chart, may be expanded not to exceed one 11" x 17" page.

VII. AVAILABLE STUDIES

[Portland Neighborhood Plan](#)

[Portland Wharf and Louisville RiverWalk Design and Implementation Review Plan](#)

VIII. METHOD OF DESIGN

The selected Consultant shall utilize the most recent CADD Standards for Highway Plans Policy in the development of the highway plans. Refer to the 2019 CADD Standards for ORD V4 Project Development Memo for information pertaining to the latest CADD Standards and plan submittal.

IX. ENVIRONMENTAL SERVICES

Any necessary Environmental Services are expected to be provided by the Consultant. The anticipated environmental document will be an Environmental Overview. Prequalification of various Environmental Services itemized in Section XV below are required to be identified in the Consultant's Response to Announcement.

X. PHOTOGRAMMETRIC SERVICES

The Consultant will provide mapping and will furnish manuscripts in ORD format. Statewide Elevation data and Aerial photography can be found at the following link [KyFromAbove - Kentucky's Aerial Photography & Elevation Data Program](#). The selected Consultant shall supplement this information with conventional surveying and field review as determined during project scoping.

XI. STRUCTURE DESIGN

The selected Consultant may provide the necessary engineering services to determine needed improvements of the structures involved, if any. When the project advances to Final Design and if the selected Consultant is retained for Final Design services, the selected Consultant shall do the necessary engineering services to submit to the KYTC an Advanced Situation Folder(s) for the appropriate structure(s). The selected Consultant may be responsible for any necessary Structure Design services. Structure Design of the proposed structure(s) may be added as a

Contract Modification. Prequalification in the area of Structure Design is required to be identified in the Consultant's Response to Announcement.

XII. GEOTECHNICAL SERVICES

The selected Consultant may provide all Geotechnical Services required for the project. The Preliminary Design contract may include preliminary geotechnical services to review available geological, mining, or other geotechnical information that could influence the selection of the preferred alternate. Geotechnical services necessary for the completion of Final Design may be added by contract modification at the appropriate time. At any time, if the Department has the capacity to provide these services, the Department may retain the advertised geotechnical services. Prequalification in the area of Geotechnical Services is not required to be identified in the Consultant's Response to Announcement.

XIII. TRAFFIC ENGINEERING

The selected Consultant will provide the analysis of the existing and proposed operations. Traffic Signal Design and Lighting Design services, if necessary for the completion of Final Design, may be added by Contract Modification at the appropriate time. At any time, if the Department has the capacity to provide these services, the Department may retain the advertised traffic services.

XIV. UTILITIES

The selected Consultant shall provide a project location map to the Department. The Department will send project location maps to all potential utility contacts to determine whether they may have existing utilities within these project limits. The Department will develop the utility contact list. Facility atlas maps received for this project will be provided to the selected Consultant.

The selected Consultant will identify existing significant utility facilities that may be impacted. The extent to which any existing significant utility facilities may be impacted by any proposed project and any significant adverse effects on the project budget or schedule of any such impacts should be documented.

The selected Consultant shall acquire adequate information regarding existing utility features to determine or assist the Cabinet in determining the extent to which potentially impacted utilities may impact the project budget or schedule. The selected Consultant should be aware of and bring attention to any potential utility impacts that may result in significant cost or time to relocate.

XV. PREQUALIFICATION REQUIREMENTS

To respond to this project the Consultant must be prequalified in the following areas by the response due date of this advertisement:

[ENVIRONMENTAL & UST SERVICES](#)

- UST & Hazmat Preliminary Site Assessment (Phase 1)

ENVIRONMENTAL AQUATIC & TERRESTRIAL ECOSYSTEMS ANALYSIS

- Fisheries
- Botany
- Terrestrial Zoology
- Wetlands
- Freshwater Macroinvertebrates
- Water Quality

ENVIRONMENTAL ARCHAEOLOGY & OTHER SERVICES

- Air Quality Analysis
- Prehistoric Archaeology
- Socio-Economic Analysis
- Highway Noise Analysis
- Historic Archaeology
- Environmental Document Writing & Coordination
- Cultural-Historic Analysis
- Stream & Wetland Mitigation

INTELLIGENT TRANSPORTATION SYSTEMS

- Technology / System Evaluation

ROADWAY DESIGN

- Advanced Traffic Engineering Design & Modeling
- Surveying
- Urban Roadway Design

TRAFFIC ENGINEERING

- Traffic Engineering
- *Electrical Engineering Roadway Lighting* (see note below)*

TRANSPORTATION PLANNING

- Traffic Forecasting
- Traffic Data Collection
- Advanced Transportation Planning Engineering
- Pedestrian & Bicycle Planning & Design
- Travel Demand & Simulation Modeling
- Conceptual Transportation Planning

Geotechnical Services* (see note below)

- *Geotechnical Engineering**
- *Geotechnical Drilling**
- *Geotechnical Laboratory Testing**

Structure Design* (see note below)

- *Spans Under 500 Feet**

* Note – These prequalifications are not required with the initial proposal as it is uncertain to the extent practicable if they are necessary. Should these services become necessary during the delivery of the project in this or future phases, the selected Consultant team must obtain the required qualifications before providing those services or bring on a prequalified subconsultant at that time.

XVI. PROCUREMENT SCHEDULE

Dates other than Response Date are tentative and provided for information only.

- Advertisement Date: September 12, 2023
- Response Date: October 4, 2023 by 4:30 PM ET (Frankfort Time)
- First Selection Meeting: October 9, 2023
- Final Selection: October 25, 2023
- Pre-Design Conference: November 1, 2023
- Consultant Fee Proposal: November 10, 2023
- Contract Negotiations: November 22, 2023
- Notice to Proceed: December 13, 2023

XVII. PROJECT SCHEDULE

- Existing Conditions Meeting March 2024
- 1st Local Officials/Stakeholders/Public Meetings April 2024
- Initial Alternatives Review Meeting August 2024
- 2nd Local Officials/Stakeholders/Public Meetings October 2024
- Final Alternatives Review Meeting December 2024
- Submit Draft Report February 2025
- Submit Final Report April 2025

XVIII. EVALUATION FACTORS

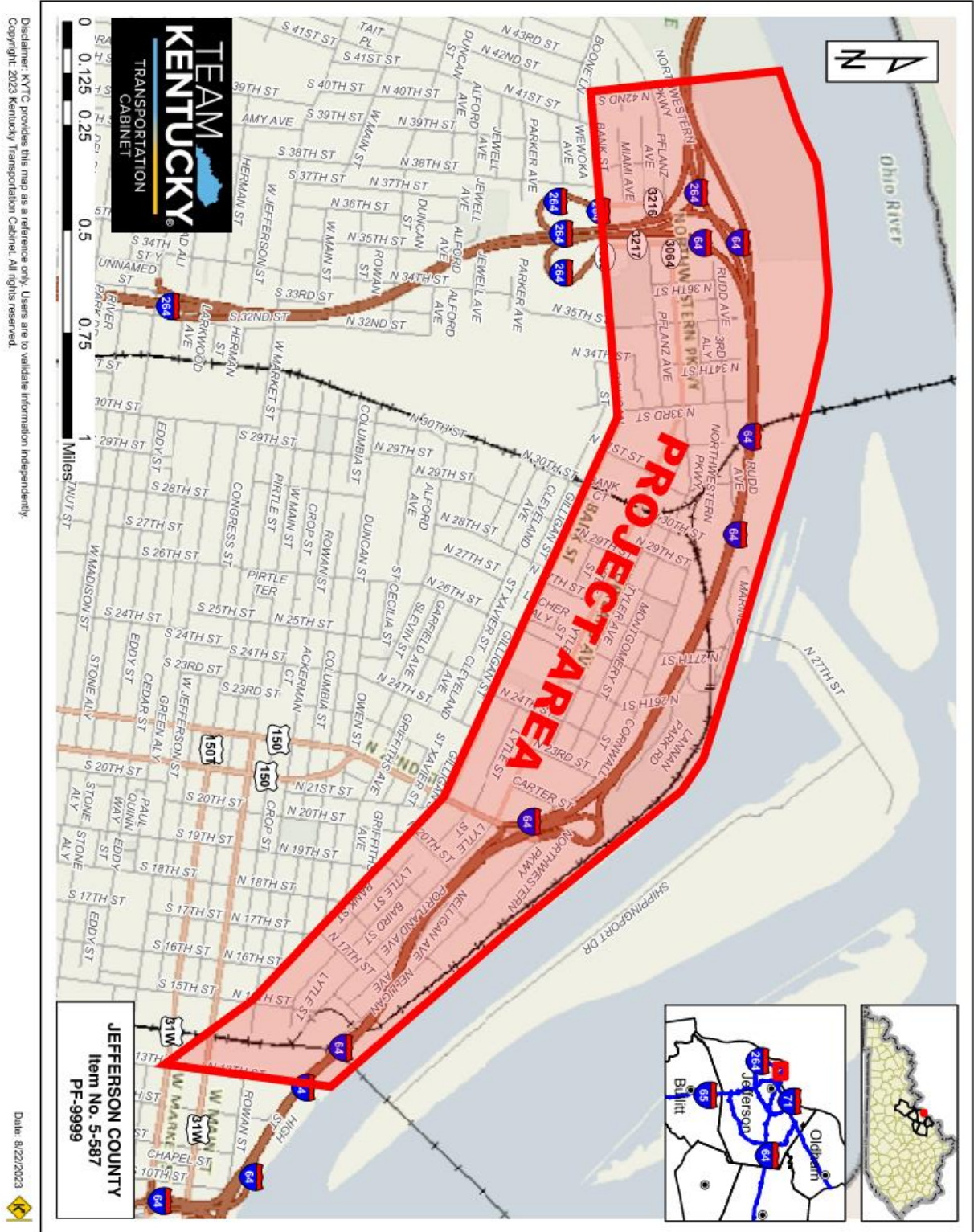
Consultants will be evaluated by the selection committee based on the following weighted factors:

1. Project approach and proposed procedures to accomplish the services for the project. (20 Points)
2. Relative experience of consultant personnel assigned to project team with highway project for KYTC and/or federal, local or other state governmental agencies. (15 Points)
3. Past record of performance on projects similar in type and complexity. (15 Points)
4. Capacity to comply with project schedule. (10 Points)
5. DBE Participation Plan (4 Points)
6. Knowledge of the locality and familiarity of the general geographic area. (2 Points)

XIX. SELECTION COMMITTEE MEMBERS

1. Larry Chaney, P.E., User Division
2. Stephen De Witte, P.E., User Division
3. Matthew Sipes, P.E., Secretary's Pool
4. Amanda Desmond, P.E., Secretary's Pool
5. Cindy Evensen, Governor's Pool

XX. AREA MAP



Disclaimer: KYTC provides this map as a reference only. Users are to validate information independently. Copyright 2023 Kentucky Transportation Cabinet. All rights reserved.