

PENDLETON

TO FALMOUTH

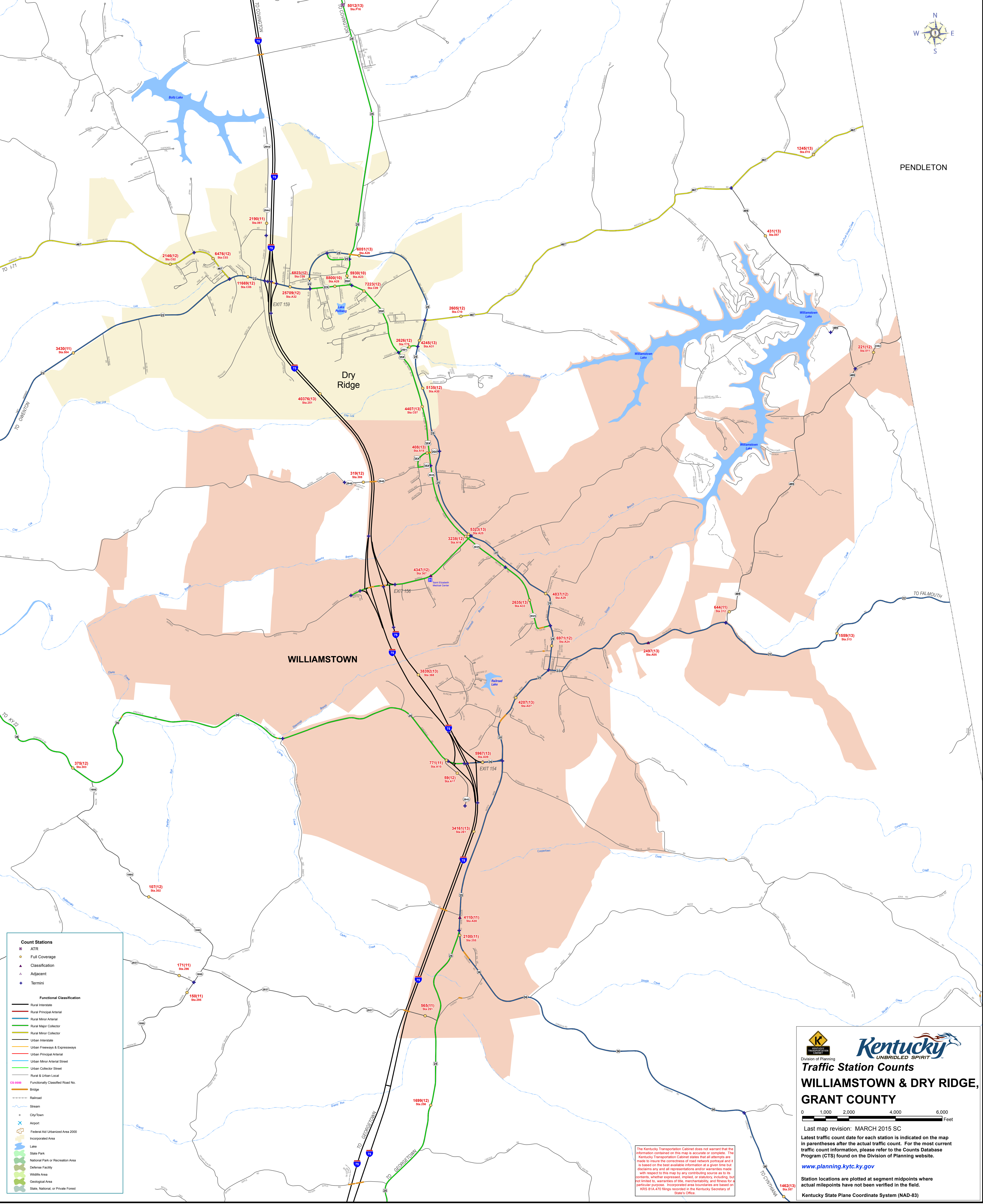
TO KY 22

TO OWENSON

TO OWENSON

TO OWENSON

TO OWENSON



Count Stations

- ATR
- Full Coverage
- Classification
- Adjacent
- Terminals

Functional Classification

- Rural Interstate
- Rural Principal Arterial
- Rural Minor Arterial
- Rural Major Collector
- Rural Minor Collector
- Urban Interstate
- Urban Freeways & Expressways
- Urban Principal Arterial
- Urban Minor Arterial Street
- Urban Collector Street
- Rural & Urban Local
- Functionally Classified Road No.
- Bridge
- Railroad
- Stream
- City/Town
- Airport
- Federal Aid Urbanized Area 2000
- Incorporated Area
- Lake
- State Park
- National Park or Recreation Area
- Defense Facility
- Wildlife Area
- Geological Area
- State, National, or Private Forest

Division of Planning
Traffic Station Counts
WILLIAMSTOWN & DRY RIDGE, GRANT COUNTY

0 1,000 2,000 4,000 6,000 Feet

Last map revision: MARCH 2015 SC
 Latest traffic count data for each station is indicated on the map in parentheses after the actual traffic count. For the most current traffic count information, please refer to the Counts Database Program (CTS) found on the Division of Planning website.
www.planning.kytc.ky.gov

Station locations are plotted at segment midpoints where actual mileposts have not been verified in the field.
 Kentucky State Plane Coordinate System (NAD-83)

The Kentucky Transportation Cabinet does not warrant that the information contained on this map is accurate or complete. The Kentucky Transportation Cabinet states that all attempts are made to insure the correctness of road network portrayal and it is based on the best available information at a given time but disclaims any and all representations and/or warranties made with respect to this map by any contributing source as to its contents, whether expressed, implied, or statutory, including, but not limited to, warranties of title, merchantability, and fitness for a particular purpose. Incorporated area boundaries are based on KRS 81A.470 filings recorded in the Kentucky Secretary of State's Office.

Traffic Station Counts WILLIAMSTOWN & DRY RIDGE, GRANT COUNTY KENTUCKY 041