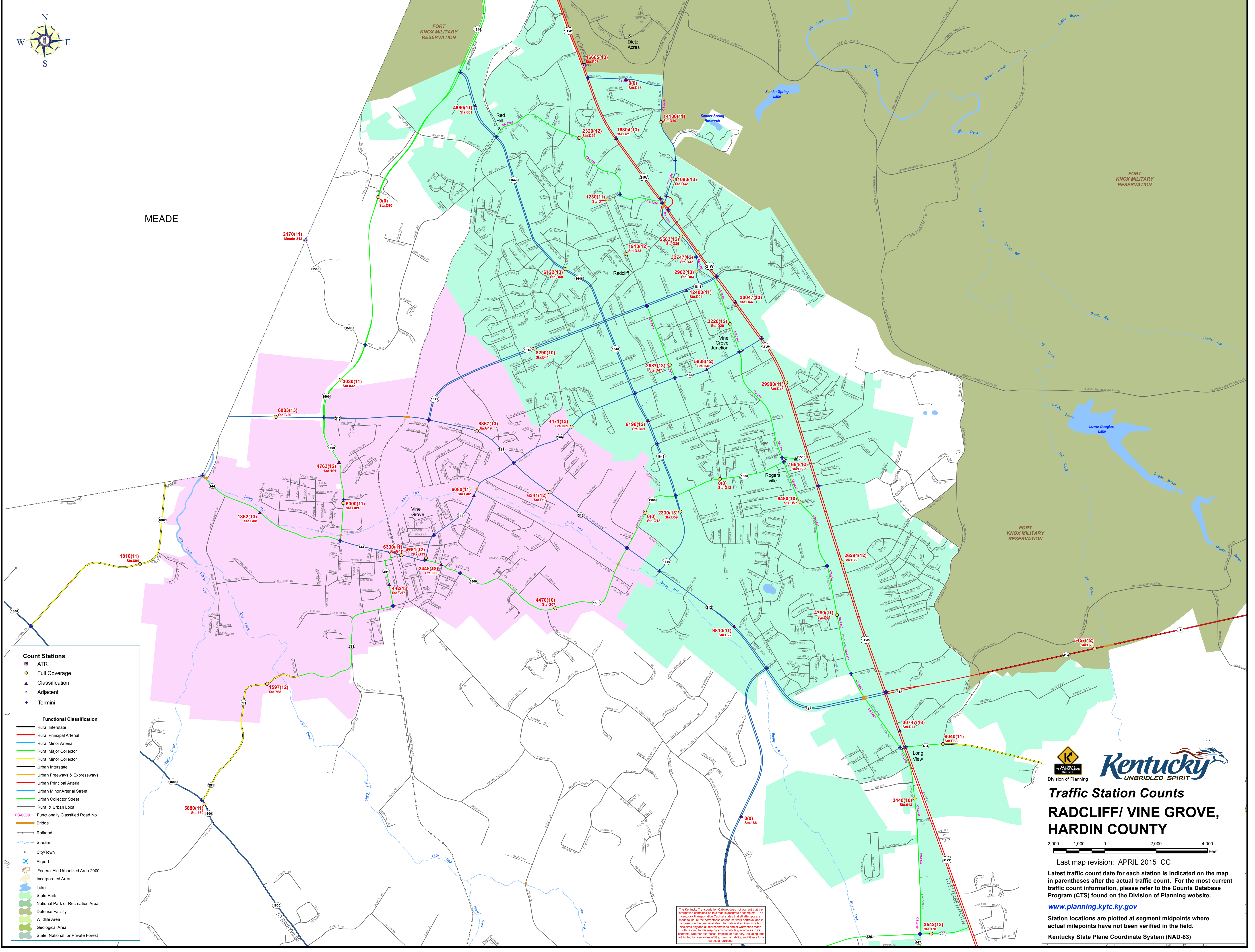


MEADE



Traffic Station Counts

RADCLIFF/VINE GROVE, HARDIN COUNTY

KENTUCKY

047

Count Stations

- ATR
- Full Coverage
- Classification
- Adjacent
- Termini

Functional Classification

- Rural Interstate
- Rural Principal Arterial
- Rural Minor Arterial
- Rural Major Collector
- Rural Minor Collector
- Urban Interstate
- Urban Freeways & Expressways
- Urban Principal Arterial
- Urban Minor Arterial Street
- Urban Collector Street
- Rural & Urban Local

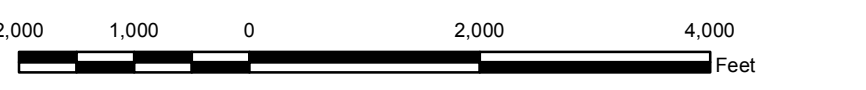
CS-0000 Functionally Classified Road No.

- Bridge
- Railroad
- Stream
- City/Town
- Airport
- Federal Aid Urbanized Area 2000
- Incorporated Area
- Lake
- State Park
- National Park or Recreation Area
- Defense Facility
- Wildlife Area
- Geological Area
- State, National, or Private Forest

The Kentucky Transportation Cabinet does not warrant the information contained on this map is accurate or complete. The Kentucky Transportation Cabinet states that all materials are made to ensure the correctness of road network portrayal and it is based on the best available information at a given time but disclaims any and all representations and/or warranties made with respect to the map by any contributing source as to the contents, whether expressed, implied, or statutory, including but not limited to, warranties of the merchantability, and fitness for a particular purpose.



Division of Planning
Traffic Station Counts
RADCLIFF/ VINE GROVE,
HARDIN COUNTY



Last map revision: APRIL 2015 CC
 Latest traffic count date for each station is indicated on the map in parentheses after the actual traffic count. For the most current traffic count information, please refer to the Counts Database Program (CTS) found on the Division of Planning website.

www.planning.kytc.ky.gov
 Station locations are plotted at segment midpoints where actual milepoints have not been verified in the field.
 Kentucky State Plane Coordinate System (NAD-83)