

The background features a dark blue gradient with faint, light blue concentric circles and a scale. The scale is a curved line with tick marks and numbers ranging from 140 to 260, positioned on the left side of the image. The text is white and centered on the right side.

# AN INTEGRATED VISION FOR ENHANCED TRANSPORTATION PLANNING

LEWIS G. GRIMM, P.E., PLANNING TEAM LEADER  
FHWA, EASTERN FEDERAL LANDS HIGHWAY DIVISION, ASHBURN, VA

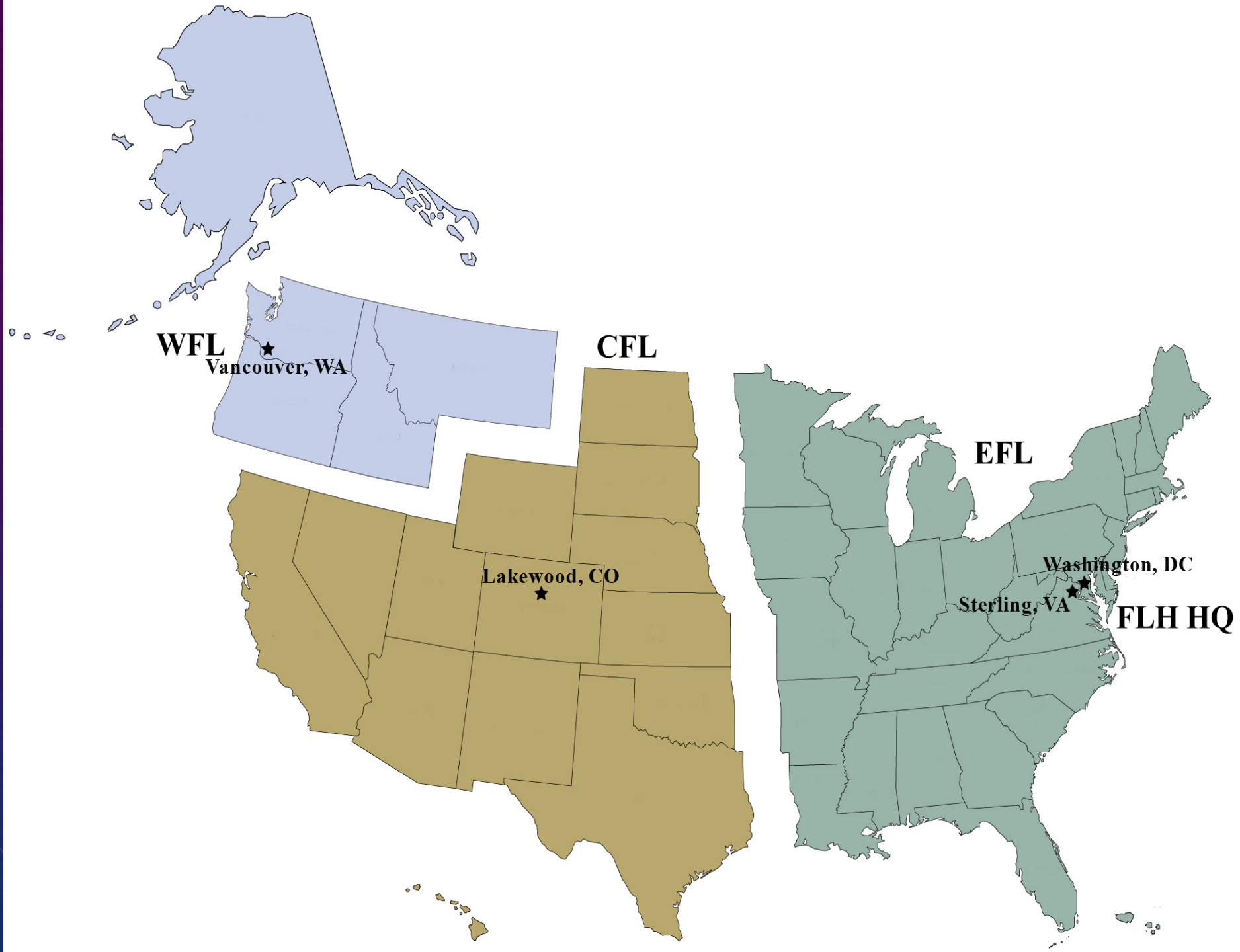
KYTC STATEWIDE TRANSPORTATION PLANNING MEETING  
JULY 21, 2021



# VISION STATEMENT

AN INTEGRATED TRANSPORTATION PLANNING PROCESS THAT BETTER ALIGNS PRIORITIES AND NEEDS ACROSS AGENCIES AND PROGRAMS





# DEFINITIONS

- Agencies:
  - Federal -> NPS, FWS, USFS, BLM, USACE, DOD, and BOR
  - Tribes
  - State -> DOTs and State Parks
  - Local -> MPOs, RPOs, COGs, and other Local Planning Agencies (LPAs)
  - Non-Governmental -> Private Companies and Non-profits
- Programs:
  - Federal -> FLTP, FLAP, FLPP, TTP, Fed-Aid, and other Federal Appropriations
  - State -> Transportation Trust Funds and other State Appropriations
  - Local -> Dedicated Sales Tax and Other Tax Measures
  - Private -> for profit operational services, philanthropic contributions, economic development investment
- Needs and Priorities: Locally identified projects (road, bridge, trail (bike/ped), transit or planning study)  
-> short and long term -> constrained and unconstrained -> capital and operational -> conceptual and well developed.





## FEDERAL LANDS AND INDIAN RESERVATIONS

- Department of Defense (includes Army Corps of Engineers lakes)
- Department of Energy
- Fish and Wildlife Service / Wilderness
- Forest Service / Wilderness
- National Park Service / Wilderness
- Tennessee Valley Authority

Some small sites are not shown, especially in urban areas.



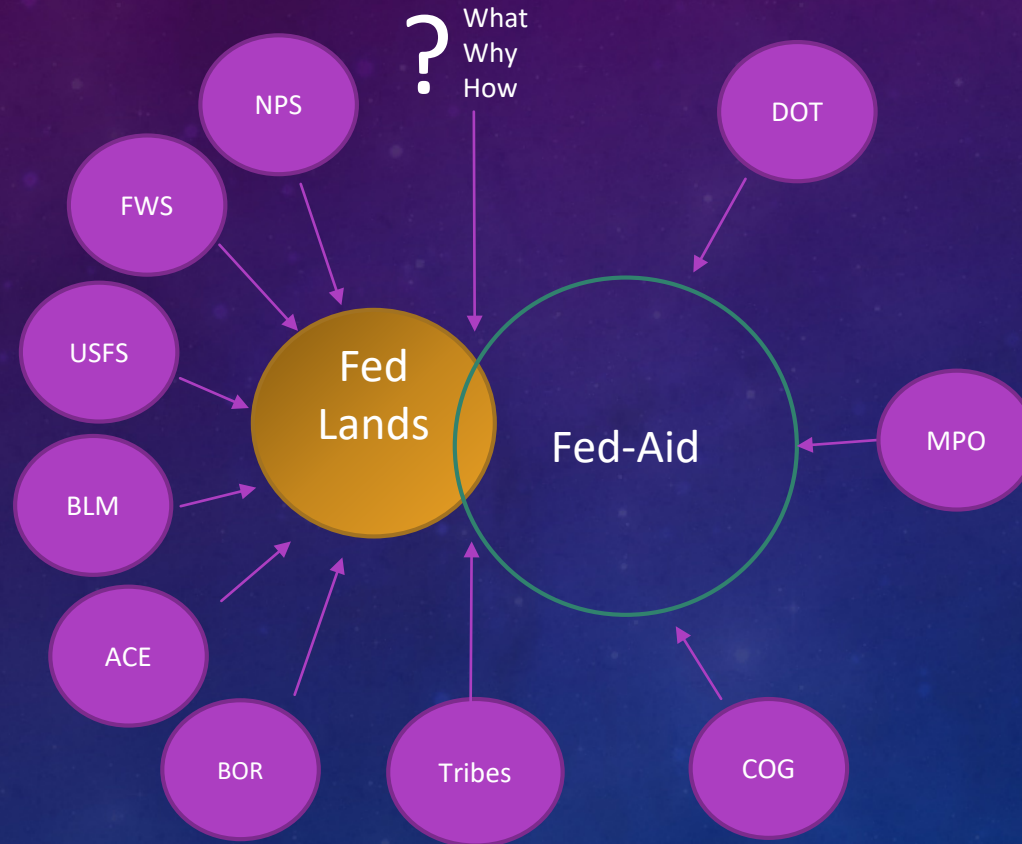
Albers equal area projection

### Abbreviations

- NF National Forest
- NWR National Wildlife Refuge



# INTEGRATING FLMA NEEDS AND PRIORITIES IN STATEWIDE AND METRO CONTEXTS



What: Shared Needs and Priorities

Why:

- A. Consistent with Planning Regs
- B. Leverage Partners
- C. Better Coverage of Need

How:

A = LRTP

B,C = FLTP/FLAP Profiles integrated in State and local plans



# FLH CATALOGUE OF PRODUCTS AND SERVICES

## DATA, OUTREACH AND PERFORMANCE MANAGEMENT

### Data Systems and Processing

- Technical Report on existing data management systems
- FLTP/FLAP Profiles
- Needs Assessments

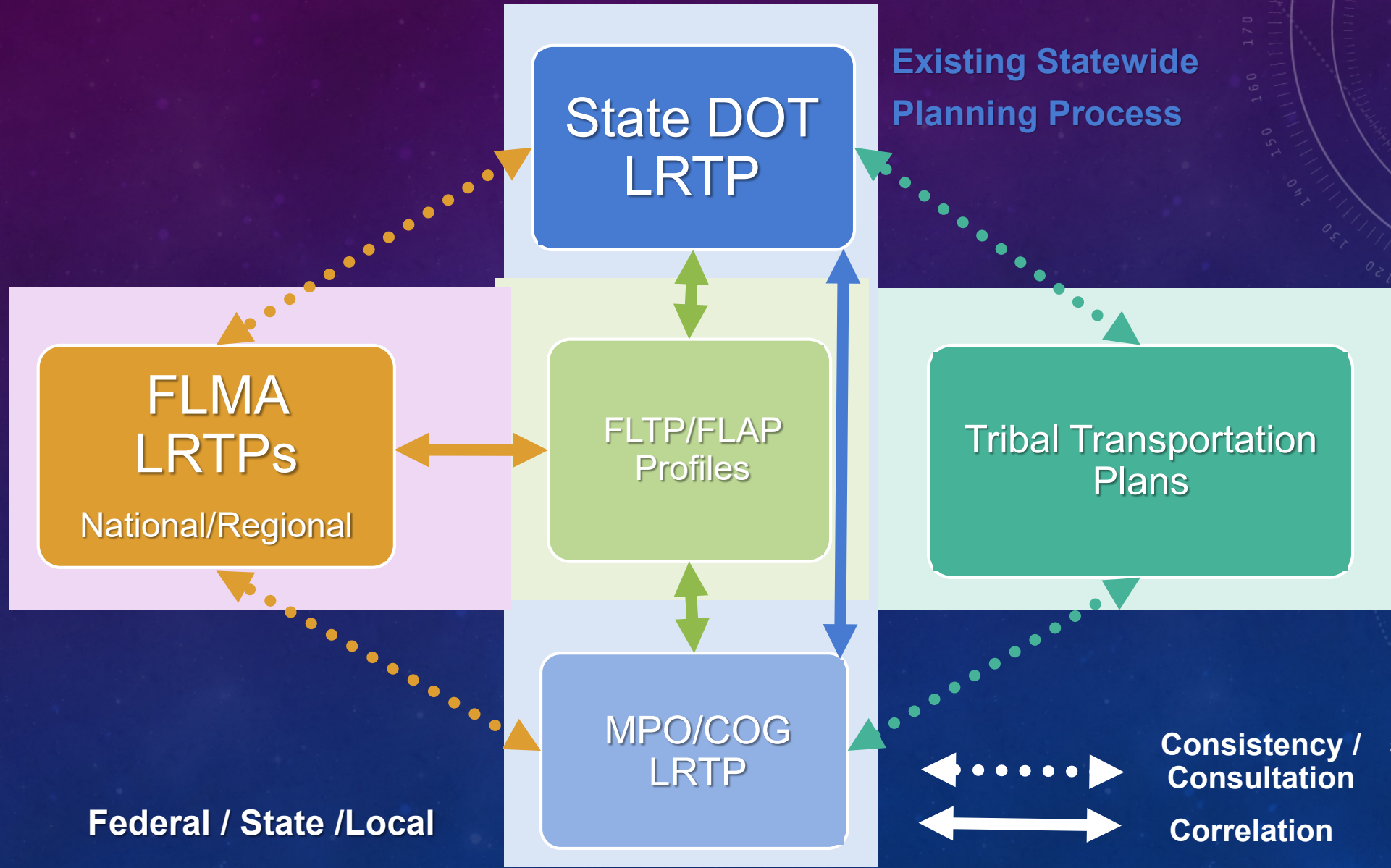
### Targeted State, Local and Tribal Outreach

- Stakeholder contact information
- Facilitated meetings in each state
- Needs assessment reports
- Documented agreements where applicable
- National stakeholder database

### Performance Based Planning Tools

- Multiagency performance reports
- Federal Land Management Agency TPM Guidebook

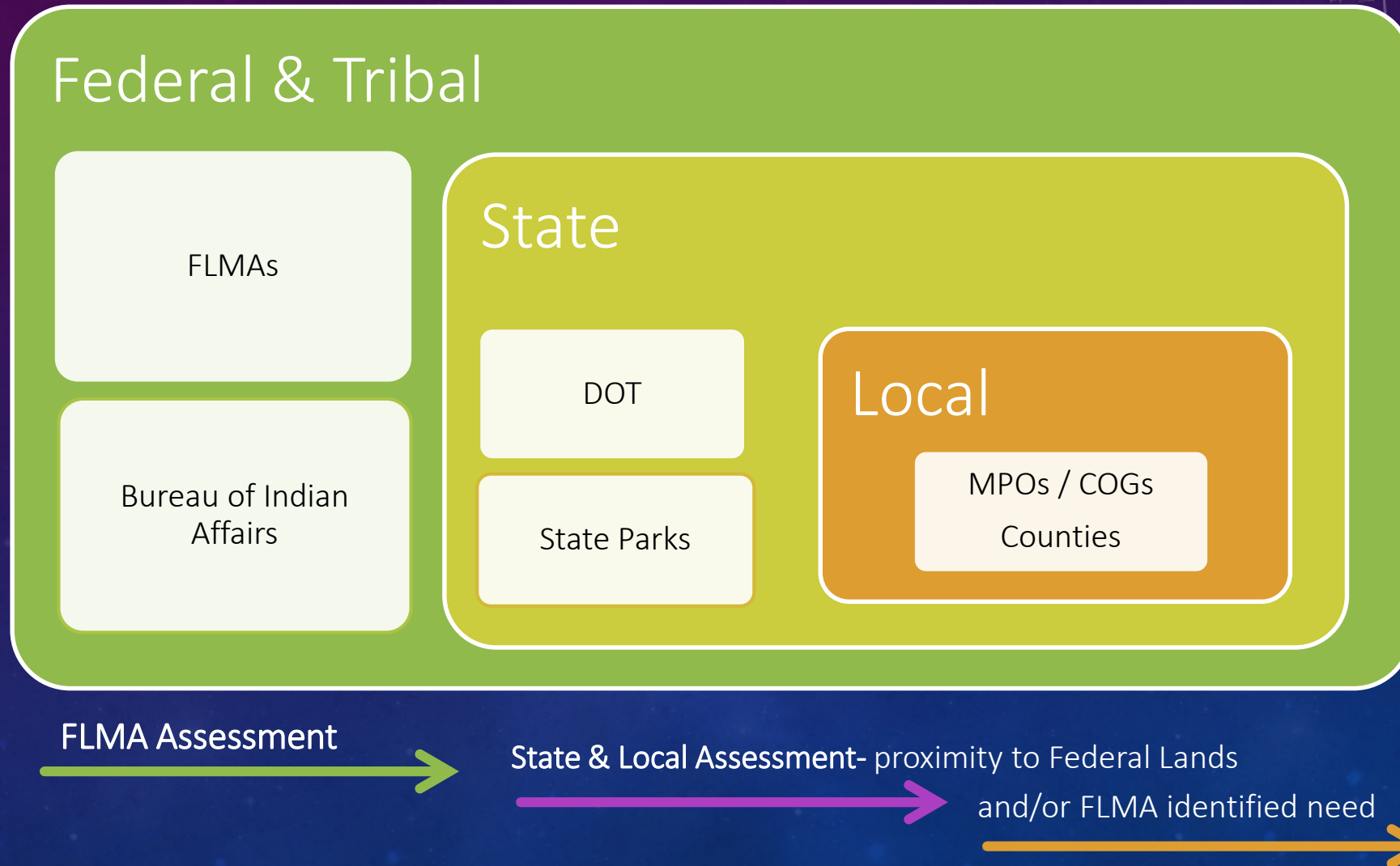
# PROCESS DESCRIPTION: IMPROVING LINKAGES BETWEEN FED LANDS AND FED-AID





# Needs Assessment

## Strategic Engagement & Deployment



# FLPP JOINT PROJECT – INTEGRATED FEDERAL, STATE, AND LOCAL PLANNING

➤ Work to be Executed under FY19 NPS PA and joint funded in FY20 and beyond

## 1. Creating FLTP/FLAP Profiles

- FLTP/FLAP Planning Networks for each state
- Draft Data Template for Statewide Profiles
- Draft Base Maps and Geodatabases for each state

## 2. Targeted State, Local, and Tribal Outreach

- LRTP Case Studies or Cluster Analyses
- Templates for MOUs, MOAs, Charters, etc.
- Improved planning cycle alignment (Feds Lands & Fed Aid)

## 3. Statewide Needs Assessment Data Processing

- Shared need, proposed improvements, and rough cost estimates
- Customizing assessment attributes
- Process documentation

## 4. Development of Online Multi-Agency Planning Tools

- Automated statewide fact sheets for FLTP
- Data Schema for data sharing among FLTP Core Partners, state DOTs, and select local agencies



# COMMUNICATION PLAN FOR PARTNER ENGAGEMENT

- Audience
  - FLMA Core Partners – local and regional offices
  - Fed-Aid Division Offices
  - State and Local Partners - MPOs
- Means of Communication
  - Status reports and briefing memos
  - Webinars
  - Conferences and workshops
  - In-person meetings (bi-lateral and multi-lateral)
- Frequency
  - Regularly scheduled (monthly, quarterly, or annual)
  - Planning Cycle Driven (Plan/TIP/STIP update, adoption, amendment, etc.)



COMMENTS OR QUESTIONS?