



Alternatives Study

CRASH TRENDS

US 25 MP 22.179 CRF 2.11

13 crashes, 2 injury

Angle	1
Collision	2
Rear End	9
Run Off Road	0
Other	1

US 25 MP 21.679 CRF 4.57

34 crashes, 7 injury

Angle	19
Collision	3
Rear End	9
Run Off Road	1
Other	2

US 25 MP 21.143 CRF 1.34

10 crashes, 3 injury

Angle	6
Collision	1
Rear End	2
Run Off Road	0
Other	1

US 25 MP 21.042 CRF 2.69

20 crashes, 9 injury

Angle	9
Collision	1
Rear End	6
Run Off Road	0
Other	4

US 25 MP 18.880 CRF 2.40

18 crashes, 4 injury, 1 fatality

Angle	8
Collision	3
Rear End	4
Run Off Road	0
Other	3

US 25 MP 18.389 CRF 1.47

11 crashes, 5 injury

Angle	0
Collision	7
Rear End	1
Run Off Road	3
Other	0

US 25 MP 17.580 CRF 2.00

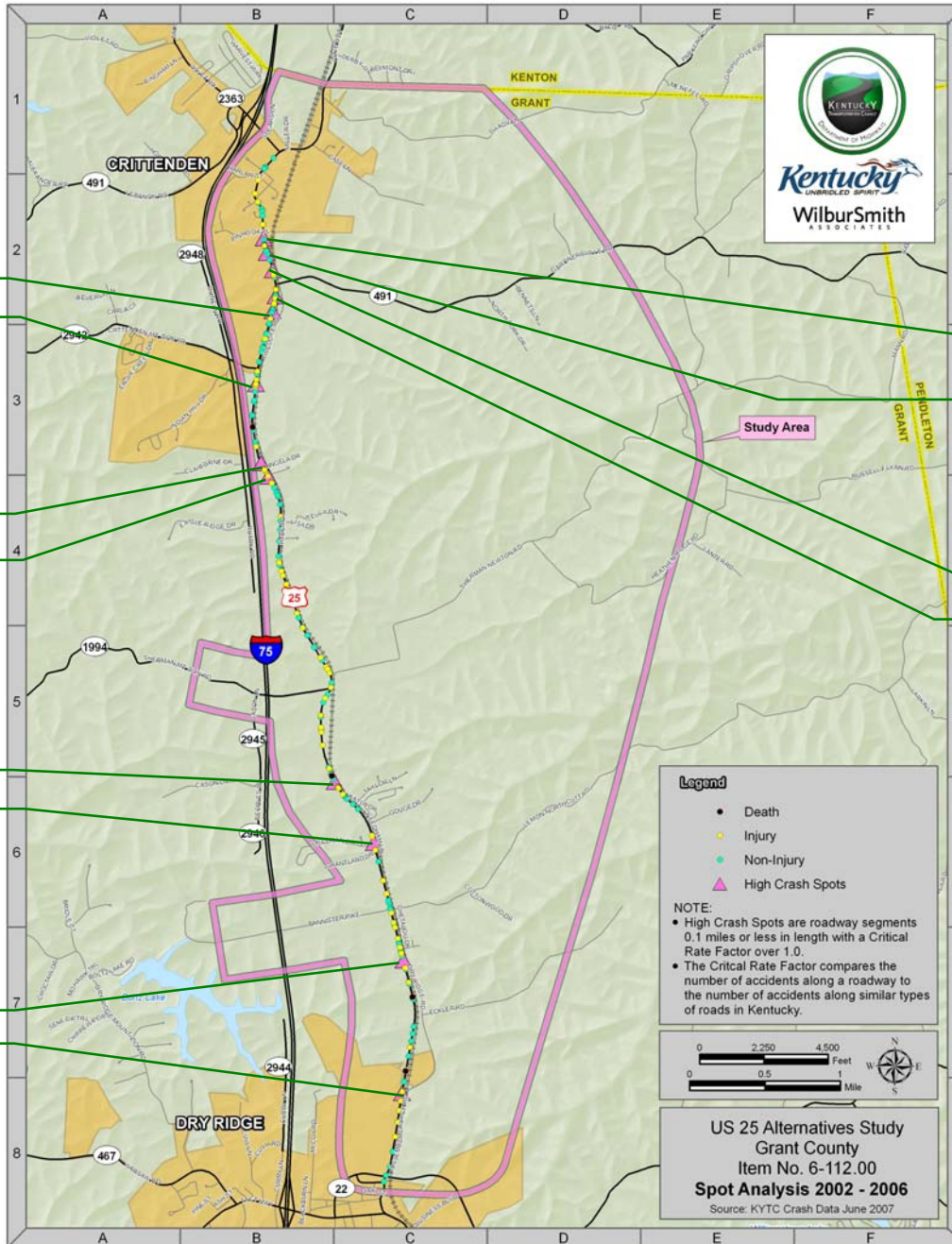
15 crashes, 6 injury

Angle	1
Collision	6
Rear End	6
Run Off Road	1
Other	1

US 25 MP 16.680 CRF 1.07

8 crashes, 6 injury

Angle	1
Collision	2
Rear End	2
Run Off Road	0
Other	3



Based on information from the CRASH database, vehicle crashes were divided into crash type categories to discover causation trends. Categories include:

- **Angle** – Any incident involving vehicle turning to or from mainline US 25;
- **Collision** – Any crash where a single vehicle impacts an object, including animals;
- **Rear End** – One vehicle impacts the rear end of another;
- **Run Off Road** – A vehicle leaves the roadway, resulting in a crash; and
- **Other** – Any other crash type, including head on, backing, and pedestrian incidents.

US 25 MP 22.579 CRF 2.76

17 crashes, 3 injury

Angle	5
Collision	3
Rear End	8
Run Off Road	1
Other	0

US 25 MP 22.680 CRF 1.46

9 crashes, 0 injury

Angle	2
Collision	1
Rear End	6
Run Off Road	0
Other	0

US 25 MP 22.283 CRF 2.44

15 crashes, 5 injury

Angle	4
Collision	3
Rear End	7
Run Off Road	0
Other	1

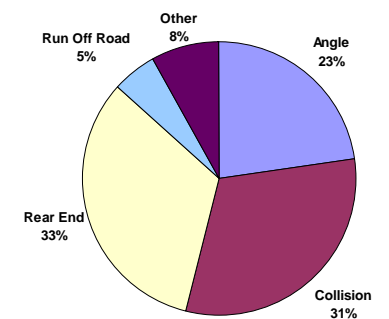
US 25 MP 22.457 CRF 1.62

10 crashes, 4 injury

Angle	0
Collision	3
Rear End	6
Run Off Road	0
Other	1

Of the **345 reported crashes** along US 25 within the study area, there were **4 fatal** and **107 injury** crashes. Most (113) crashes were rear end crashes; followed by single vehicle collisions (107), and angle crashes (79).

CRASHES BY TYPE



US 25 Alternatives Study
Grant County
Item No. 6-112.00
Spot Analysis 2002 - 2006
Source: KYTC Crash Data June 2007