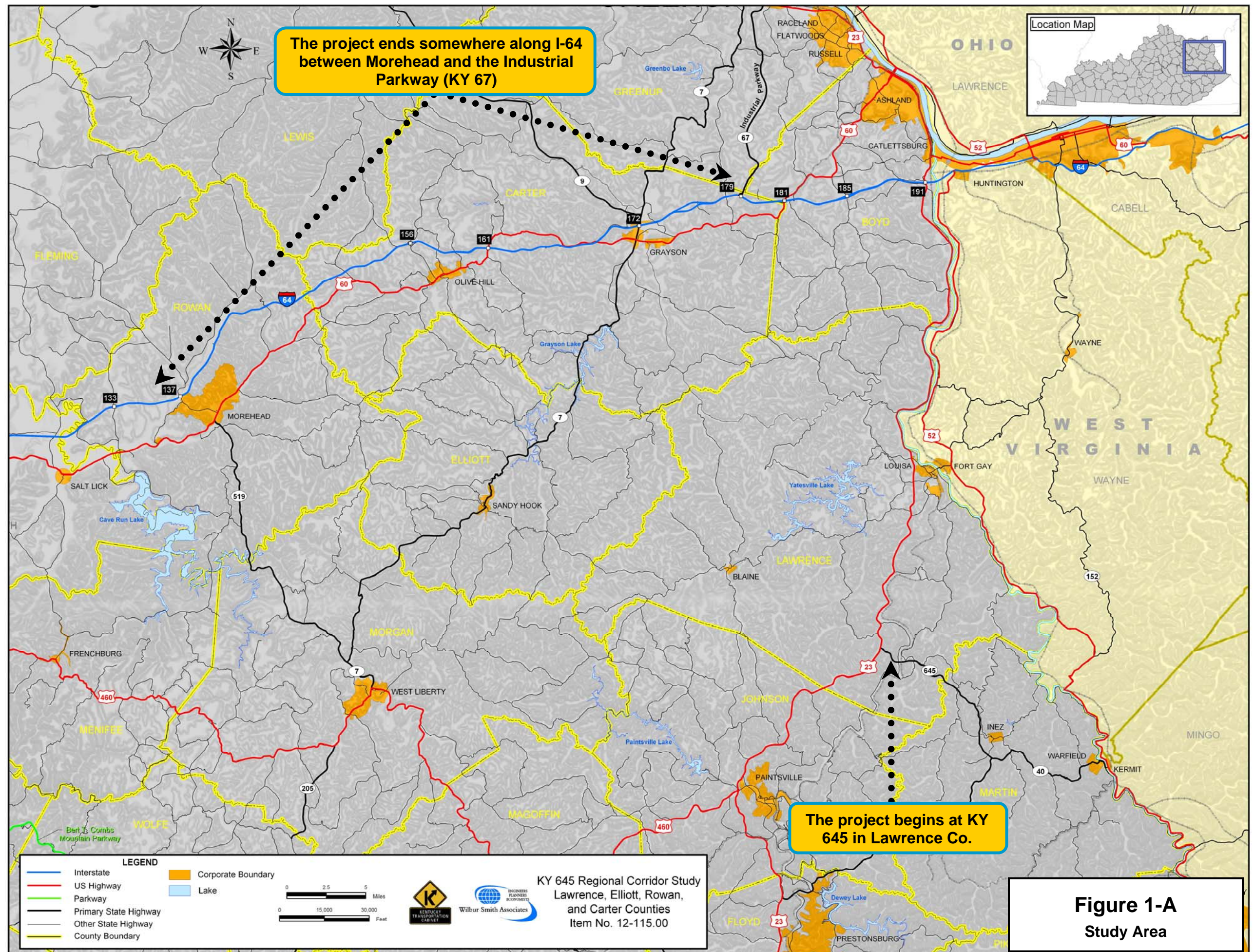


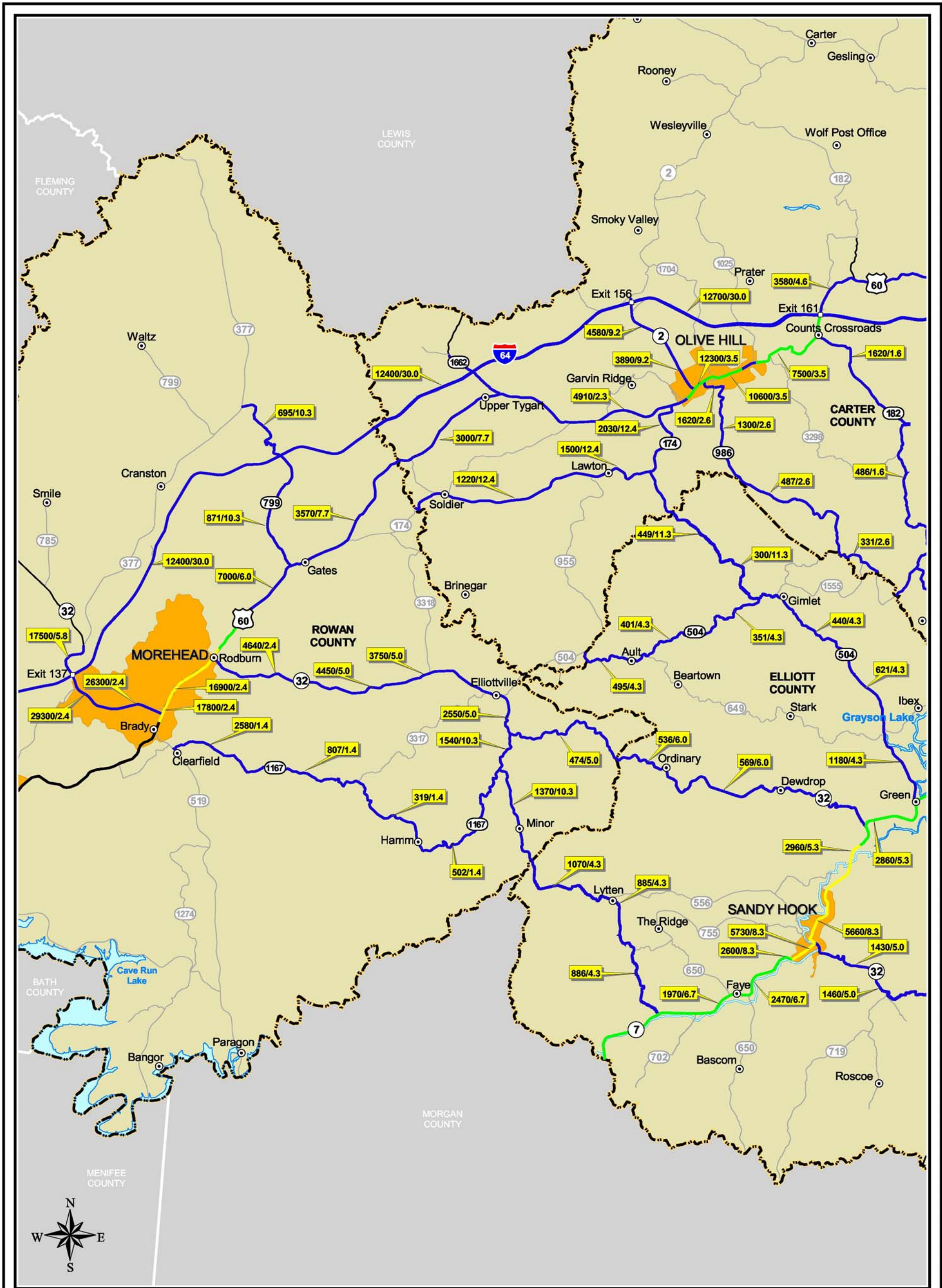
## **APPENDIX A.**

### **FIGURES**





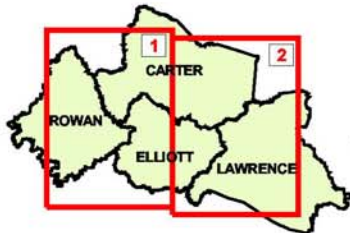




#### Legend

<span style="background-color: yellow; border: 1px solid black; padding: 2px;">12400/5.2</span>	Estimated 2002 Average Daily Traffic (ADT) / % Truck Traffic
<span style="color: blue;">—</span>	LOS C or Better
<span style="color: green;">—</span>	LOS D
<span style="color: yellow;">—</span>	LOS E
<span style="color: red;">—</span>	LOS F
<span style="border-top: 1px dashed black; border-bottom: 1px dashed black; display: inline-block; width: 20px;"></span>	County Boundary
<span style="background-color: orange; display: inline-block; width: 10px; height: 10px;"></span>	Corporate Boundary

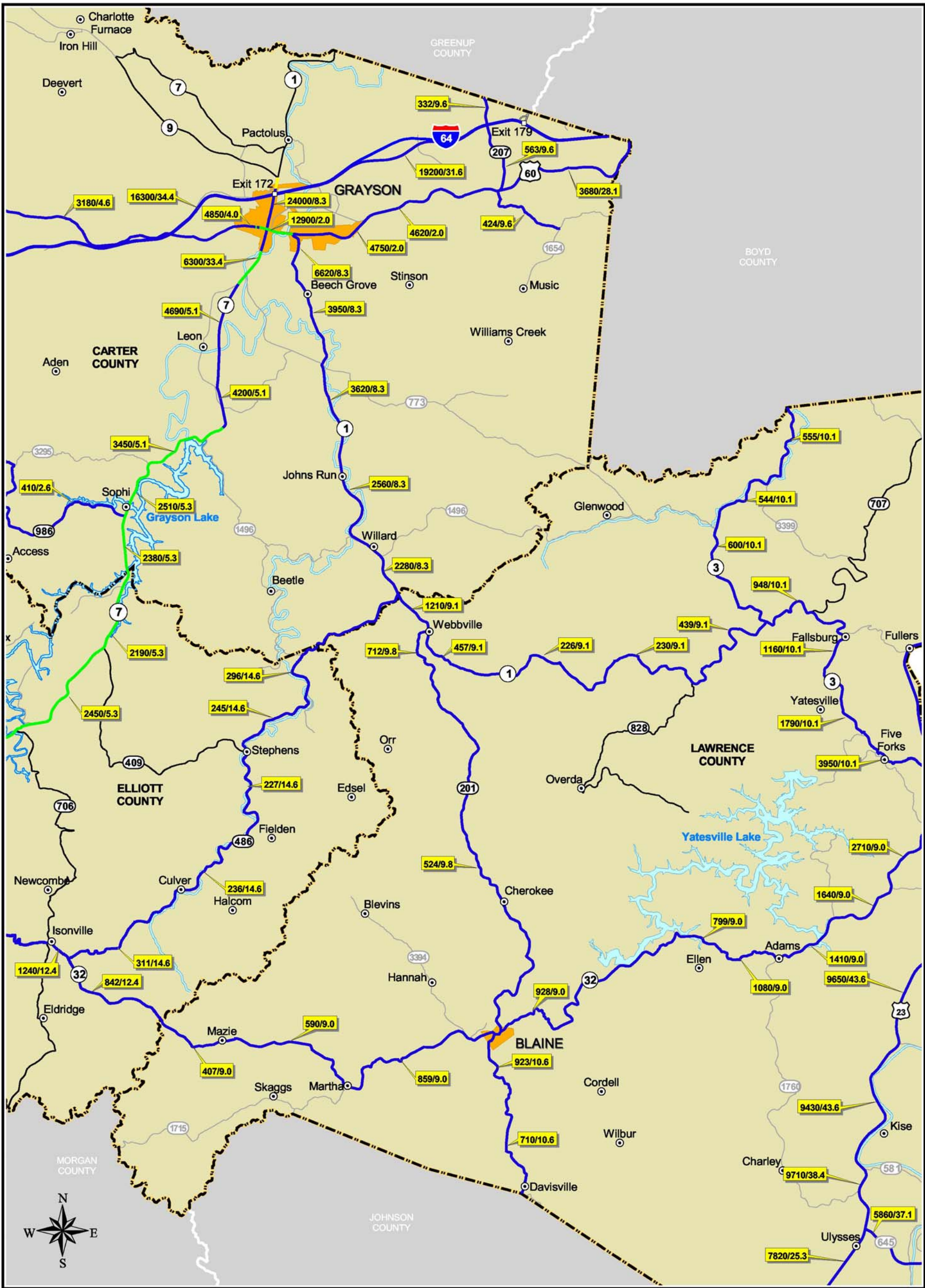
2 0 2 4 Miles



#### Figure 2-A Existing Traffic Characteristics

KY 645 Regional Corridor Study  
Lawrence, Elliott, Rowan,  
and Carter Counties  
Item No. 12-115.00





Legend

- 12400/5.2 Estimated 2002 Average Daily Traffic (ADT) / % Truck Traffic
- LOS C or Better
- LOS D
- LOS E
- LOS F
- County Boundary
- Corporate Boundary

2 0 2 4 Miles

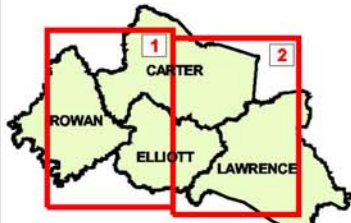
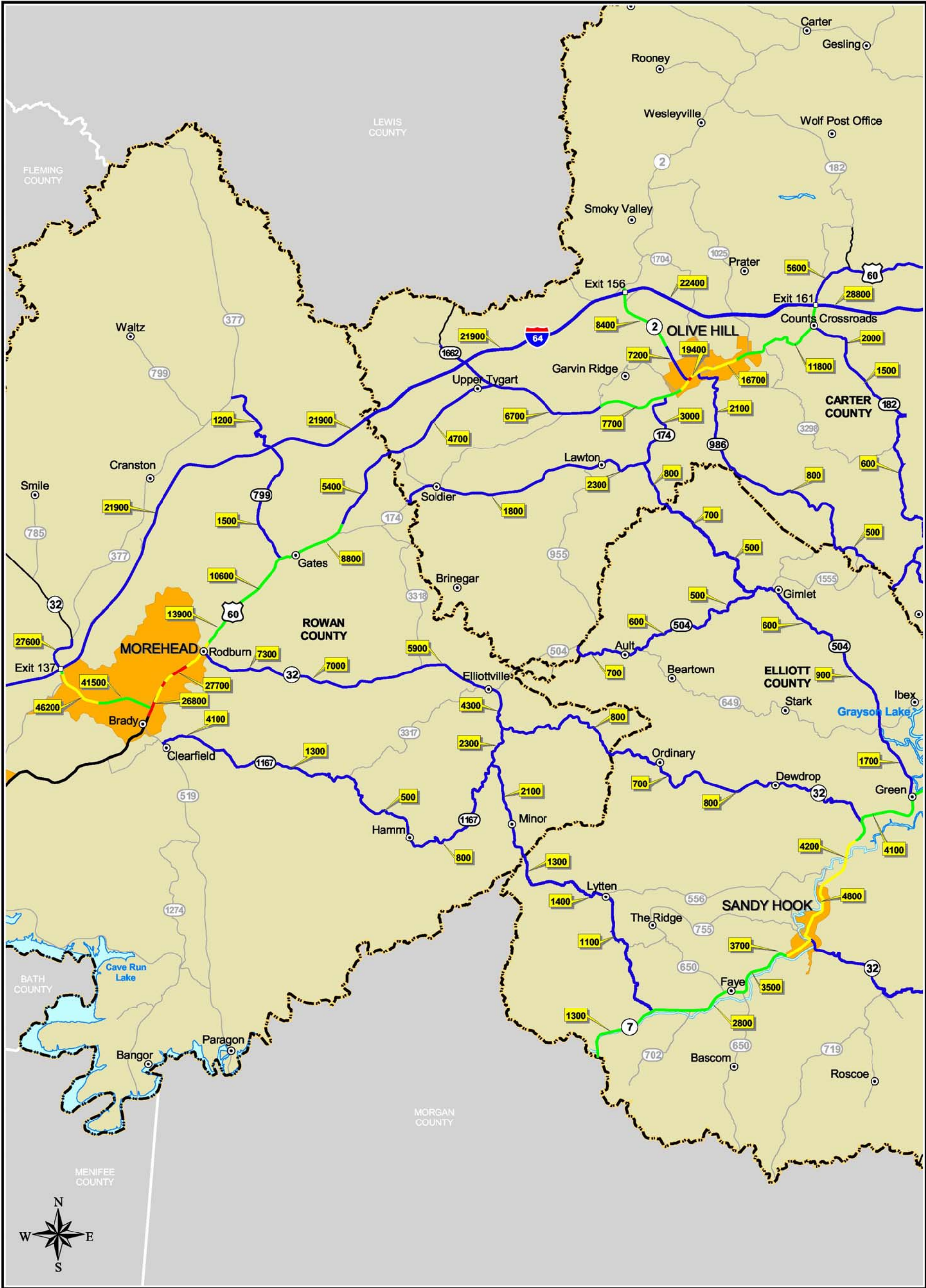


Figure 2-A (cont'd.)  
Existing Traffic  
Characteristics

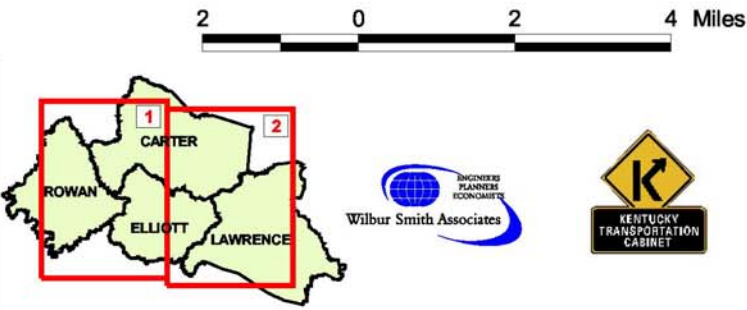
KY 645 Regional Corridor Study  
Lawrence, Elliott, Rowan,  
and Carter Counties  
Item No. 12-115.00





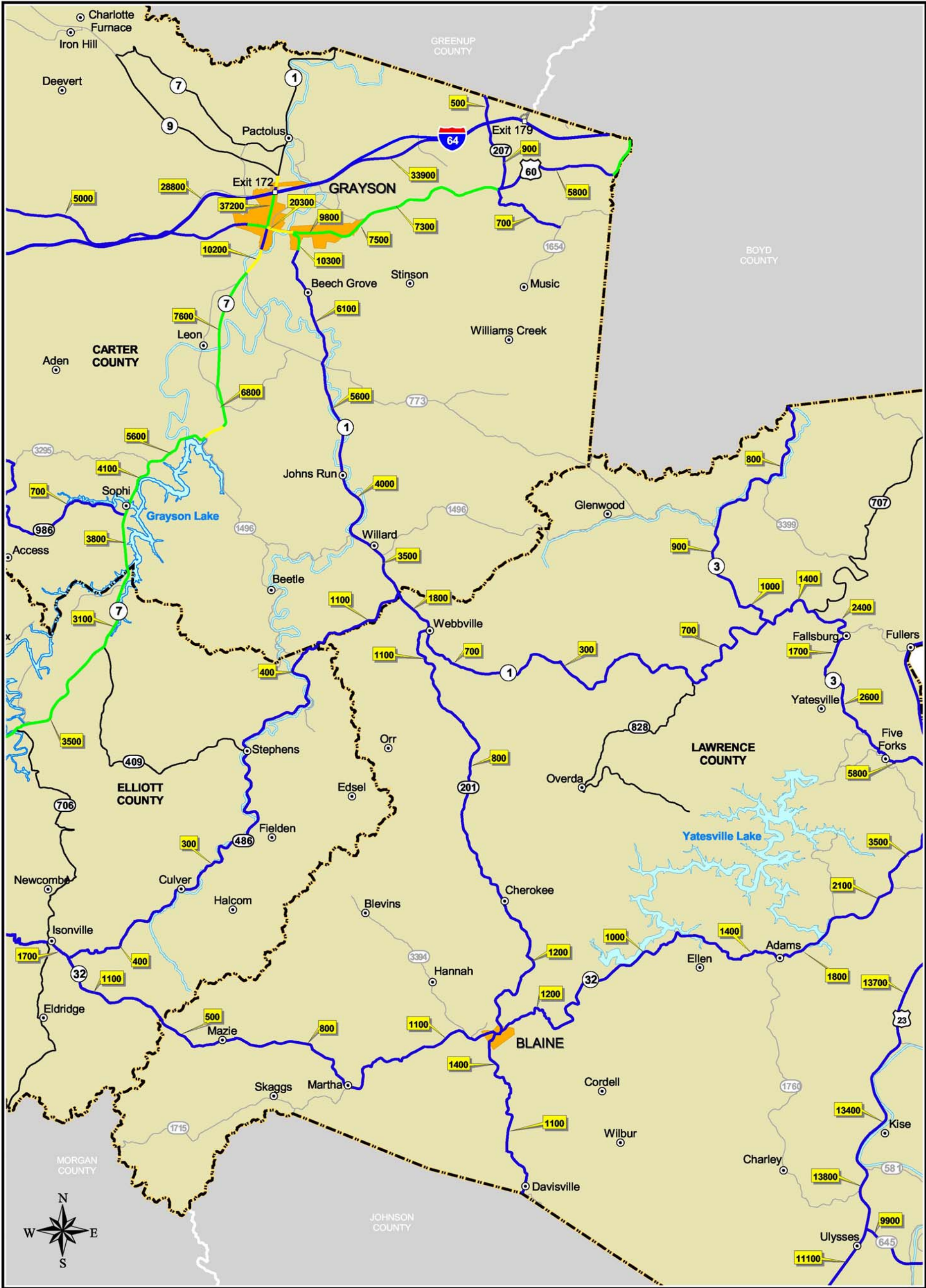
Legend

- 12400 Estimated 2002 Average Daily Traffic (ADT)
- LOS C or Better
- LOS D
- LOS E
- LOS F
- County Boundary
- Corporate Boundary

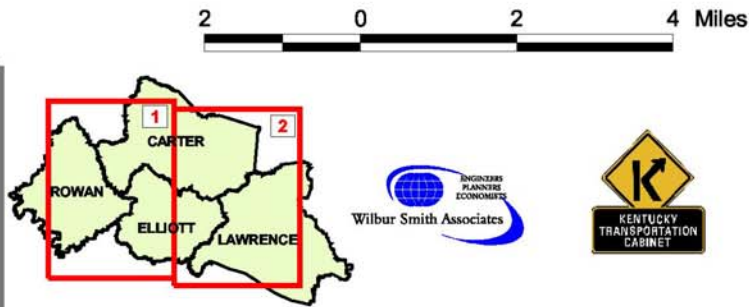
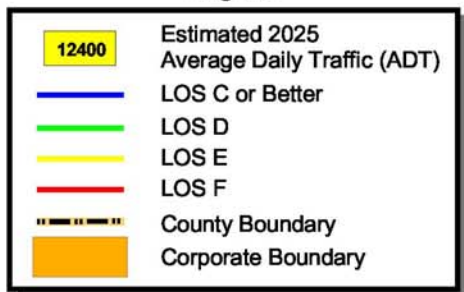


**Figure 3-A**  
**Future Traffic Characteristics**  
KY 645 Regional Corridor Study  
Lawrence, Elliott, Rowan,  
and Carter Counties  
Item No. 12-115.00



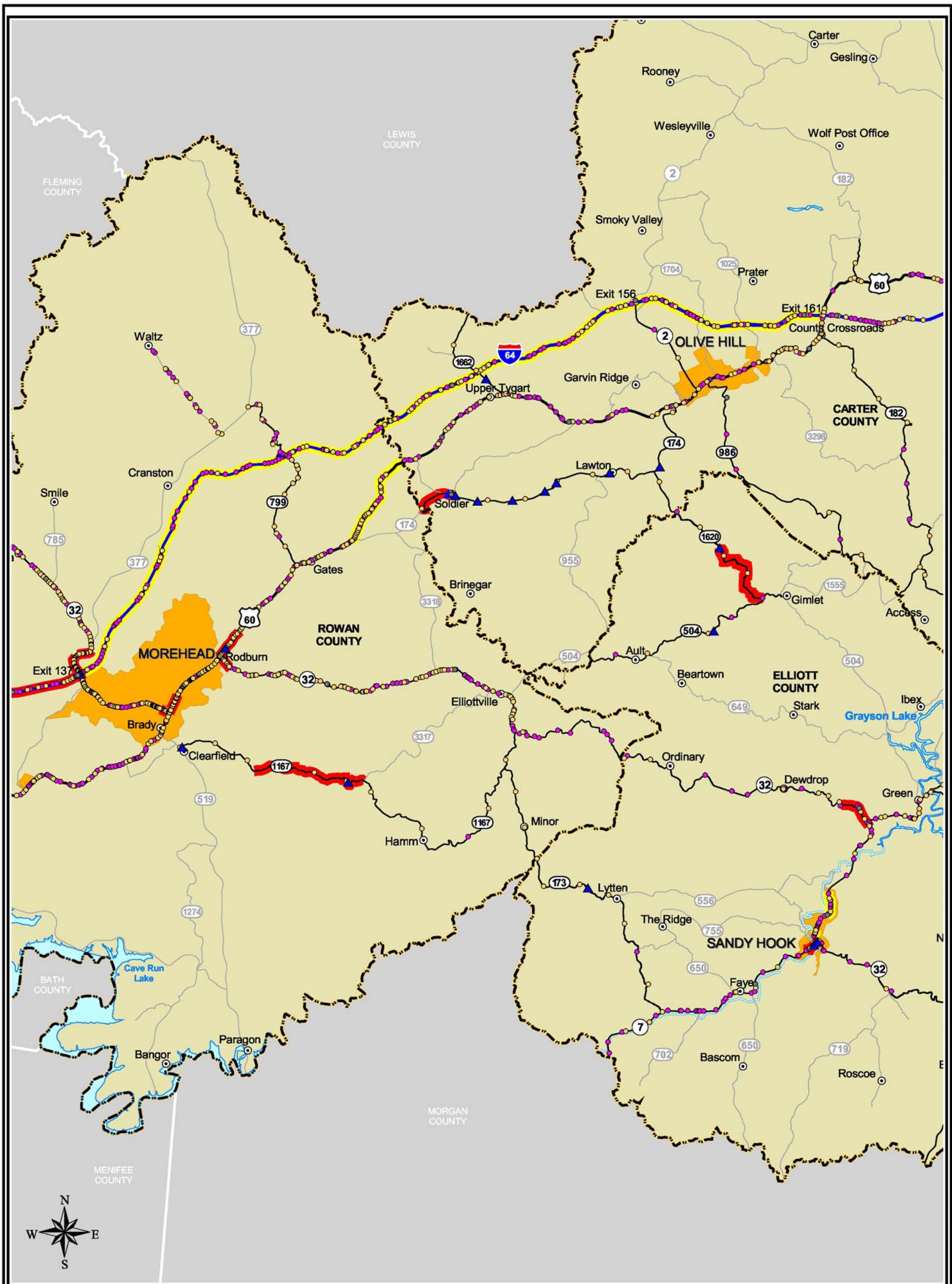


Legend



**Figure 3-A (cont'd.)**  
**Future Traffic Characteristics**  
  
KY 645 Regional Corridor Study  
Lawrence, Elliott, Rowan,  
and Carter Counties  
Item No. 12-115.00

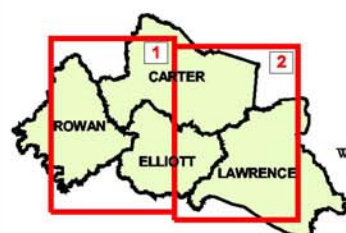




#### Legend

- ▲ High Vehicle Crash Spot - 0.1 Mile
- Fatal
- Injury
- Property Damage Only
- Yellow line Potential High Vehicle Crash Segment (Critical Rate 0.9 - 0.99)
- Red line High Vehicle Crash Segment (Critical Rate  $\geq 1.0$ )
- Dashed line County Boundary
- Orange area Corporate Boundary

2 0 2 4 Miles

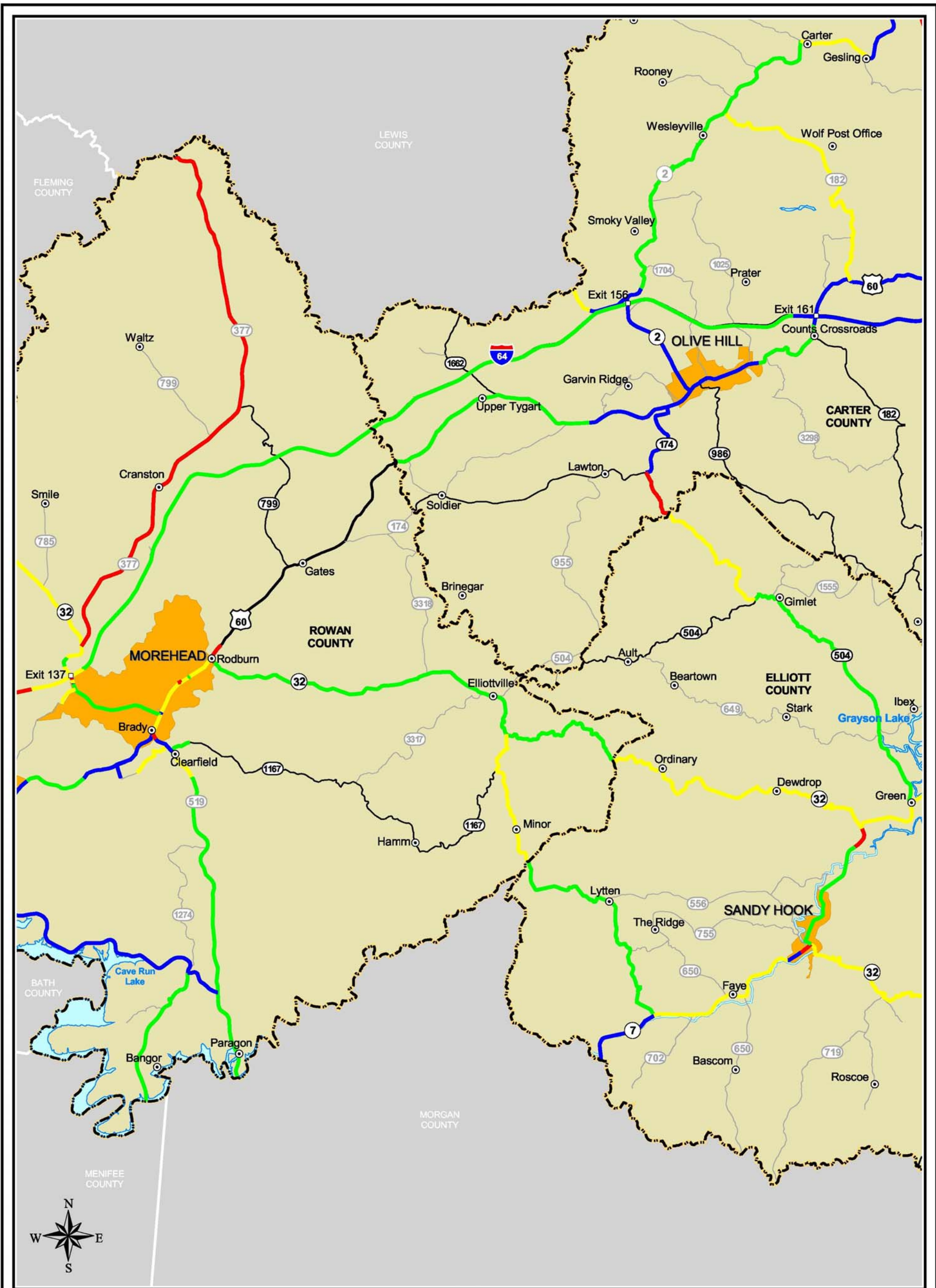


**Figure 4-A**  
Crash Data by  
Severity and Location  
KY 645 Regional Corridor Study  
Lawrence, Elliott, Rowan,  
and Carter Counties  
Item No. 12-115.00

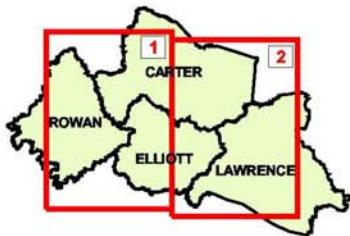
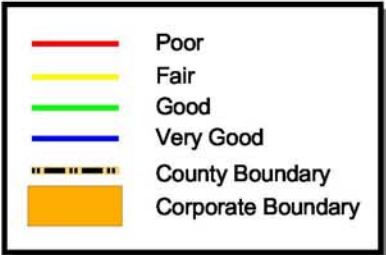








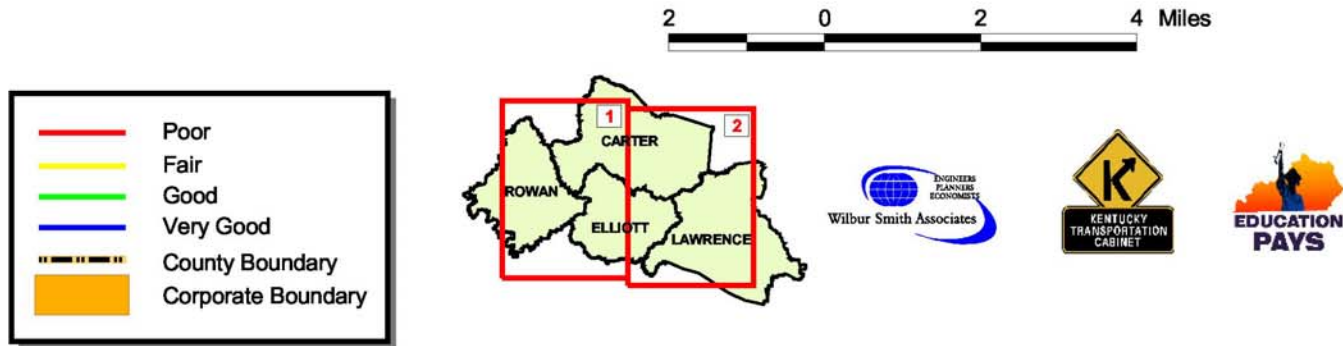
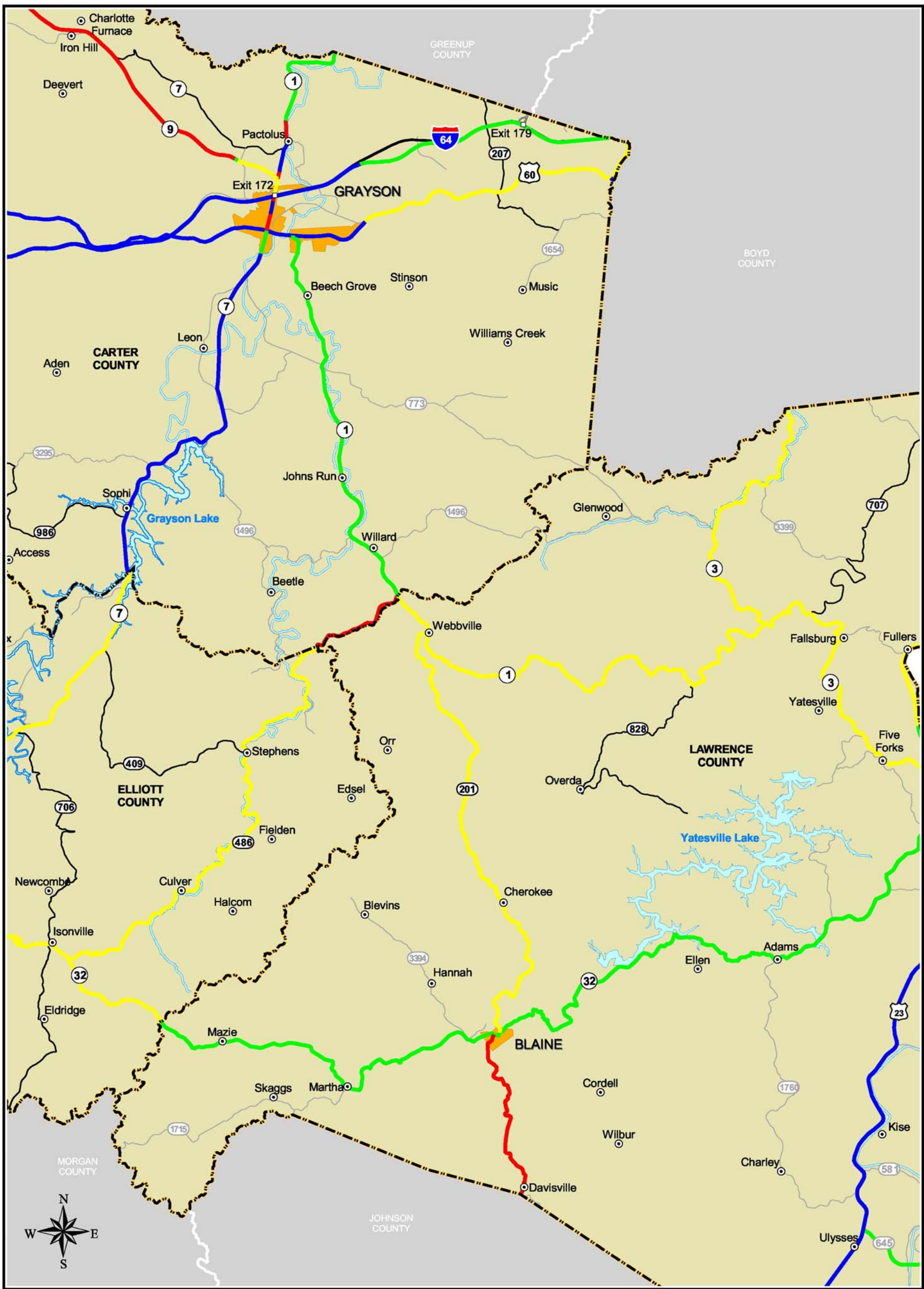
2 0 2 4 Miles



**Figure 5-A**  
Adequacy Ratings on  
Selected Routes

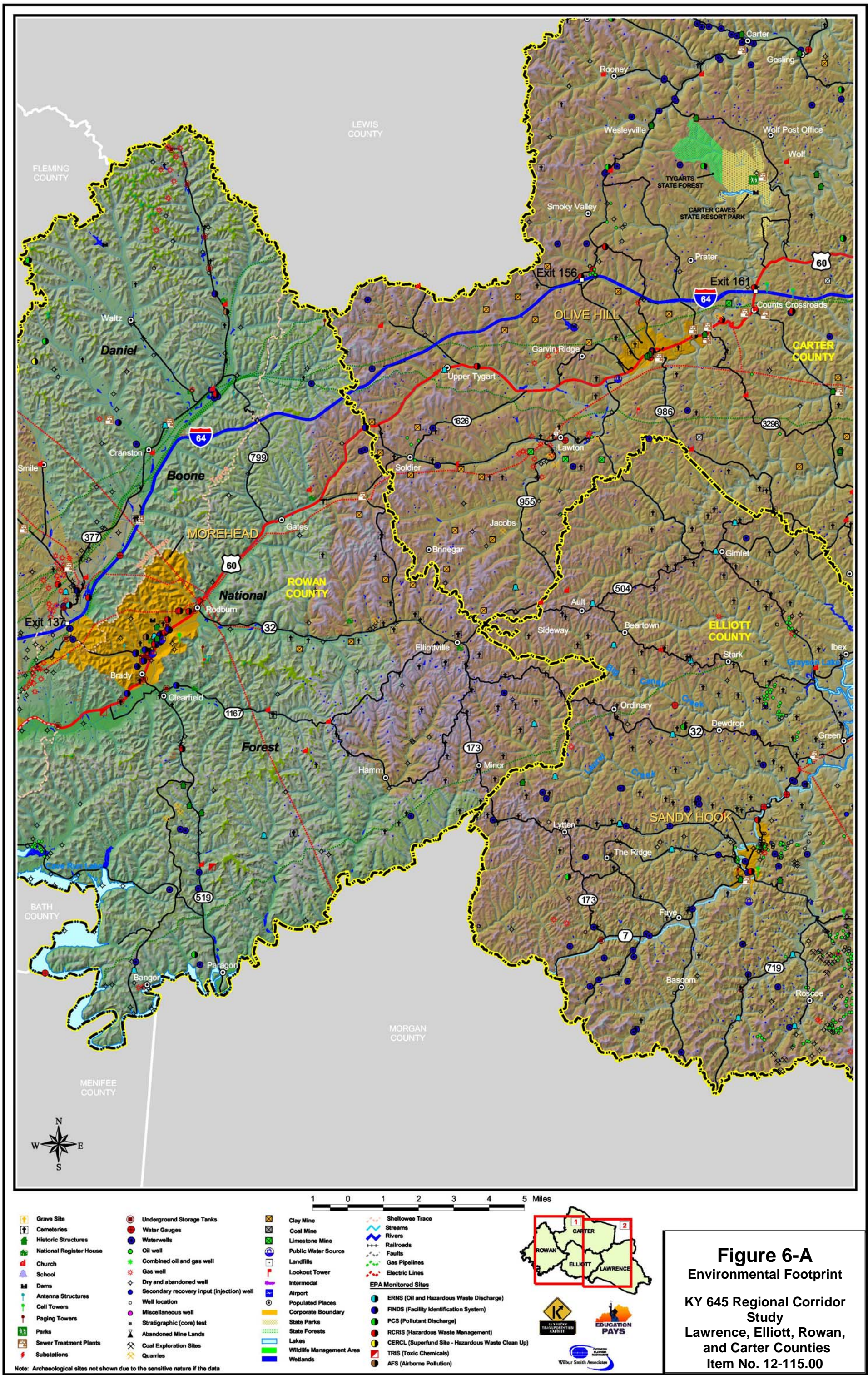
KY 645 Regional Corridor Study  
Lawrence, Elliott, Rowan,  
and Carter Counties  
Item No. 12-115.00





**Figure 5-A (cont'd.)**  
**Adequacy Ratings on**  
**Selected Routes**  
 KY 645 Regional Corridor Study  
 Lawrence, Elliott, Rowan,  
 and Carter Counties  
 Item No. 12-115.00





**Figure 6-A**  
**Environmental Footprint**  
**KY 645 Regional Corridor Study**  
**Lawrence, Elliott, Rowan, and Carter Counties**  
**Item No. 12-115.00**



