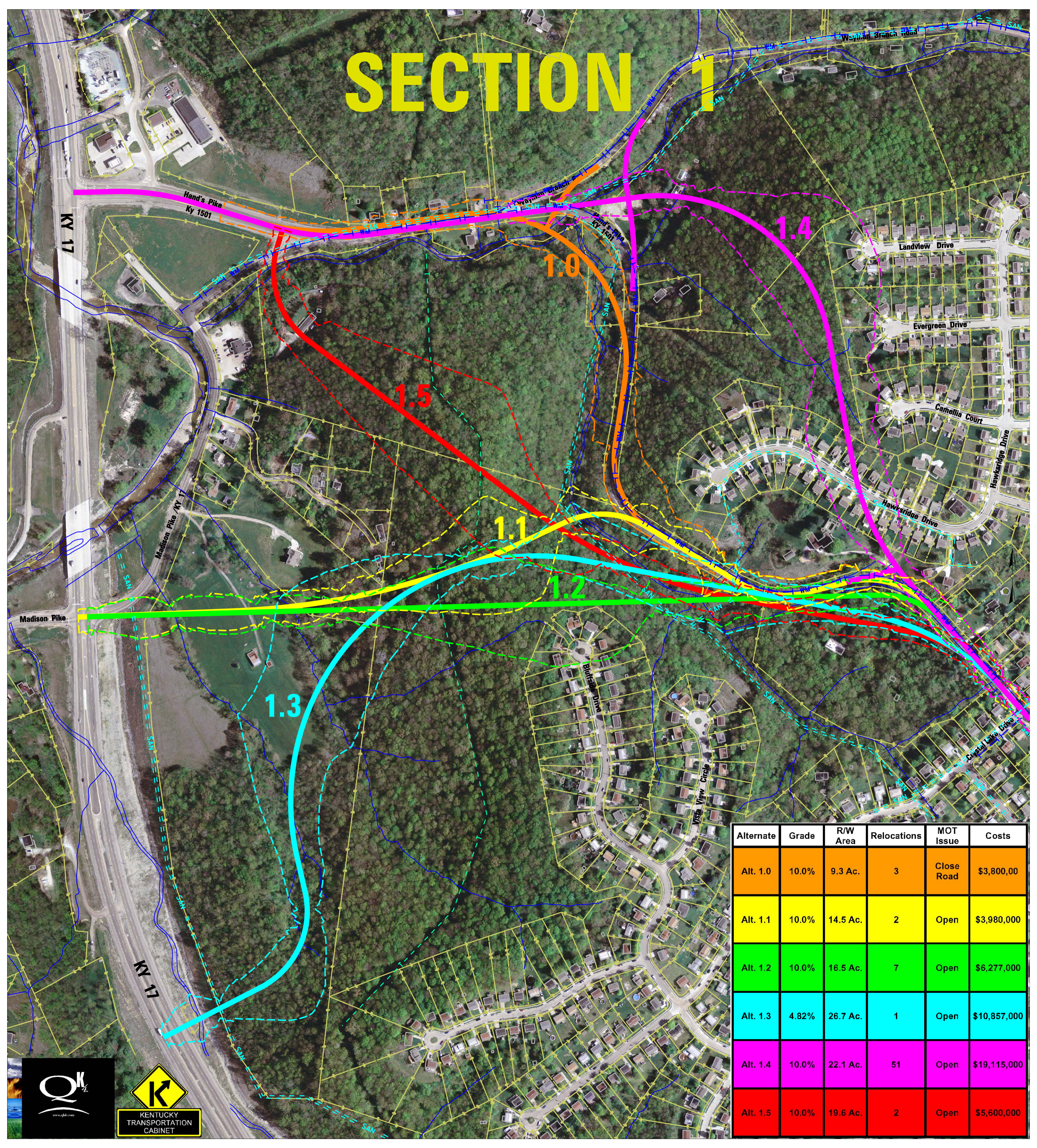


SECTION 1



Alternate	Grade	R/W Area	Relocations	MOT Issue	Costs
Alt. 1.0	10.0%	9.3 Ac.	3	Close Road	\$3,800,00
Alt. 1.1	10.0%	14.5 Ac.	2	Open	\$3,980,000
Alt. 1.2	10.0%	16.5 Ac.	7	Open	\$6,277,000
Alt. 1.3	4.82%	26.7 Ac.	1	Open	\$10,857,000
Alt. 1.4	10.0%	22.1 Ac.	51	Open	\$19,115,000
Alt. 1.5	10.0%	19.6 Ac.	2	Open	\$5,600,000